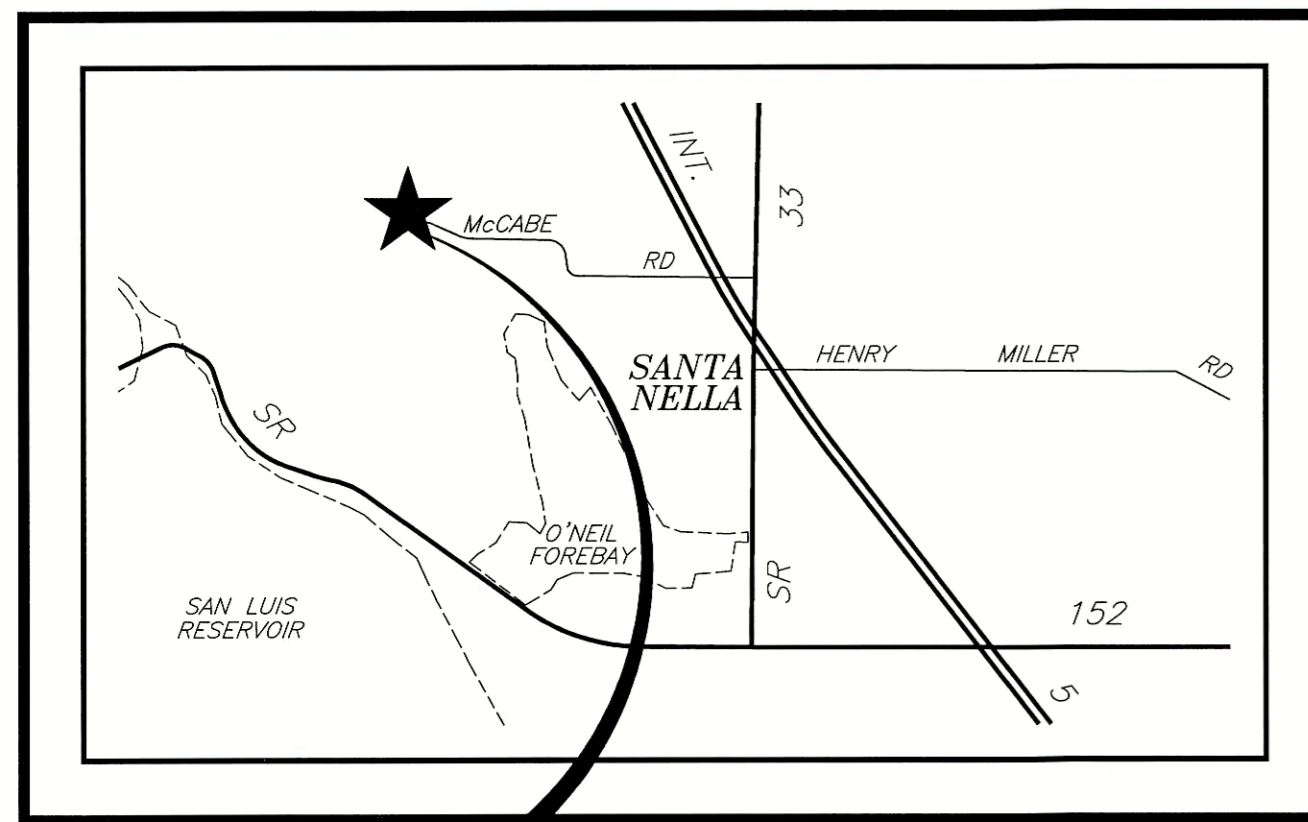


VICINITY MAP  
N.T.S.

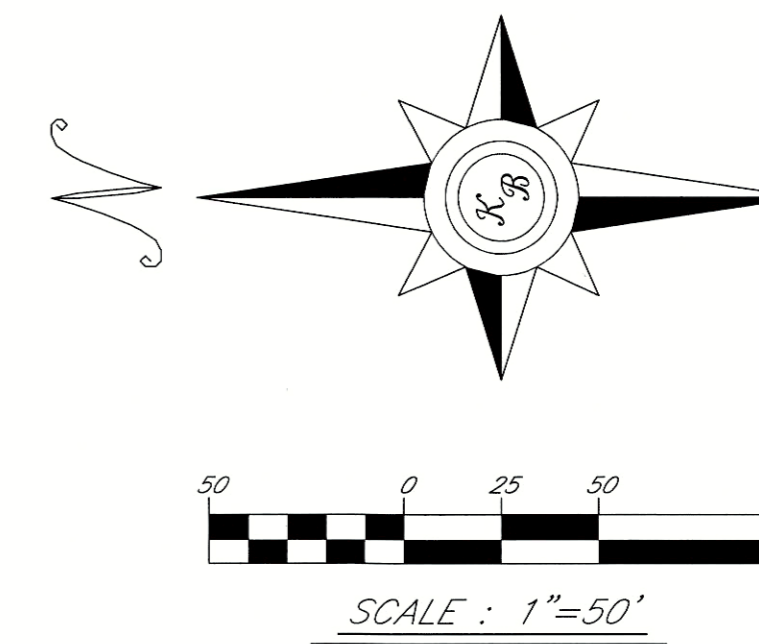


PROJECT SITE

# TOPOGRAPHIC SURVEY OF A PORTION OF THE NATIONAL VETERAN'S CEMETERY

32053 McCABE ROAD  
SANTA NELLA, CA 95322

APN 069-240-034



SURVEY PREPARED FOR  
NATIONAL VETERAN'S  
CEMETERY  
MAY 5, 2018

**LEGEND:**

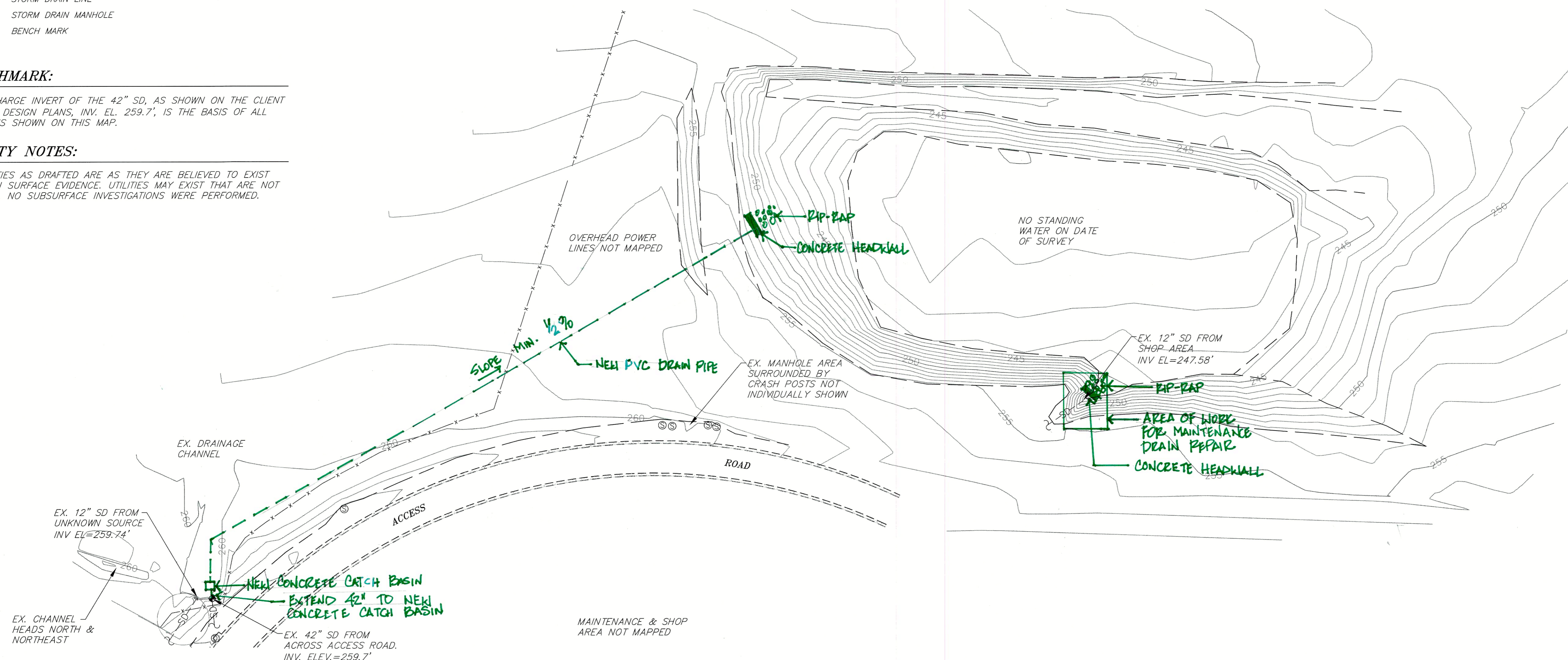
- == CURB AND GUTTER
- ⊙ SANITARY SEWER MANHOLE
- SD- STORM DRAIN LINE
- ⊙ STORM DRAIN MANHOLE
- ◆ BENCH MARK

**BENCHMARK:**

THE DISCHARGE INVERT OF THE 42" SD, AS SHOWN ON THE CLIENT SUPPLIED DESIGN PLANS, INV. EL. 259.7', IS THE BASIS OF ALL ELEVATIONS SHOWN ON THIS MAP.

**UTILITY NOTES:**

THE UTILITIES AS DRAFTED ARE AS THEY ARE BELIEVED TO EXIST BASED ON SURFACE EVIDENCE. UTILITIES MAY EXIST THAT ARE NOT INDICATED. NO SUBSURFACE INVESTIGATIONS WERE PERFORMED.



TOPOGRAPHIC SURVEY OF  
OF A PORTION OF THE  
NATIONAL VETERAN'S  
CEMETERY  
COUNTY OF MERCED,  
STATE OF CALIFORNIA

NO.	REVISION	DATE
PROJECT MANAGER		
DRAWN BY	CHECKED BY	
DATE		
CAD FILE		
JOB NUMBER		
SHEET		