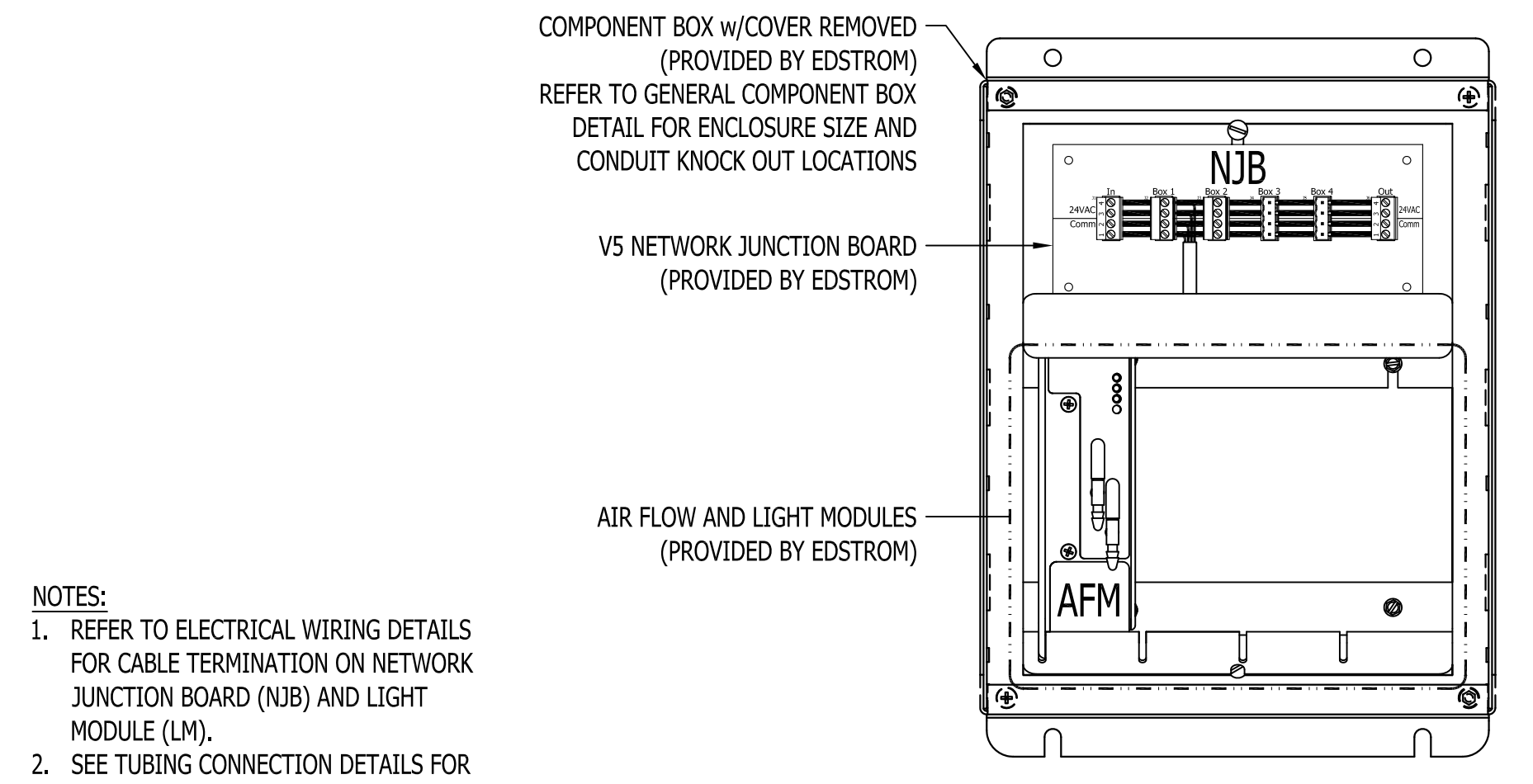


**1**  
153  
**V5 COMPONENT BOX FOR ADVANCED LIGHT MODULE CONTROL w/3 RELAYS-REDUNDANT w/O HIGH LEVEL CONTROL**

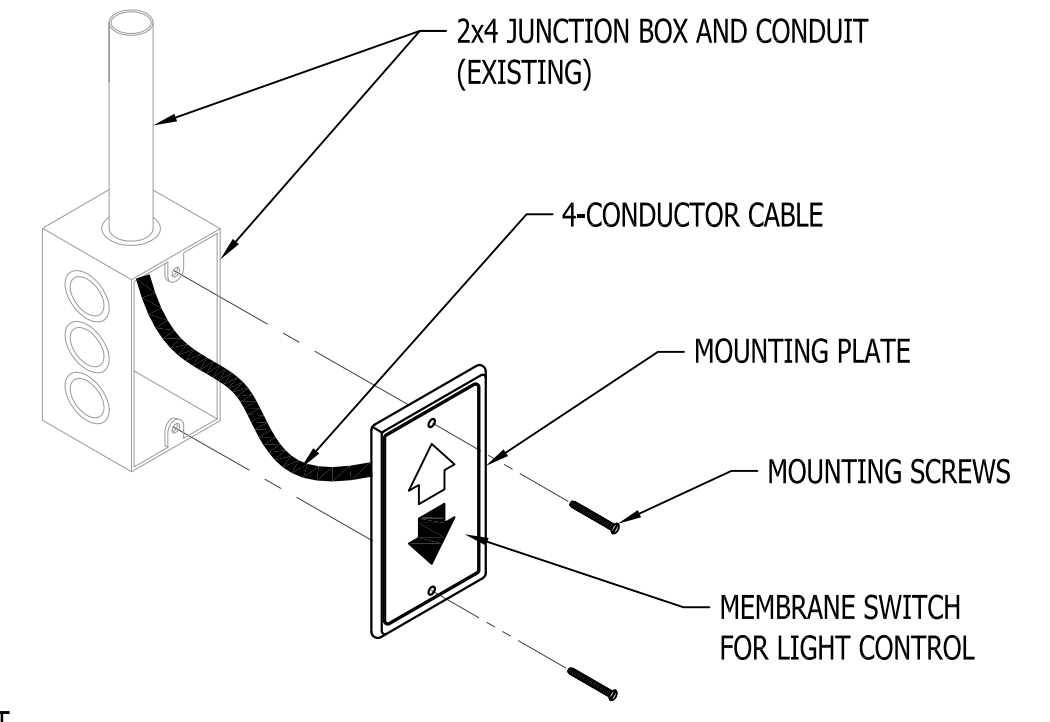


**5**  
153  
**V5 COMPONENT BOX w/AIR FLOW MODULE (EXISTING)**

NOTES:  
1. REFER TO ELECTRICAL WIRING DETAILS FOR CABLE TERMINATION ON NETWORK JUNCTION BOARD (NJB) AND LIGHT MODULE (LM).  
2. SEE TUBING CONNECTION DETAILS FOR AIR FLOW (AFM) MODULE.

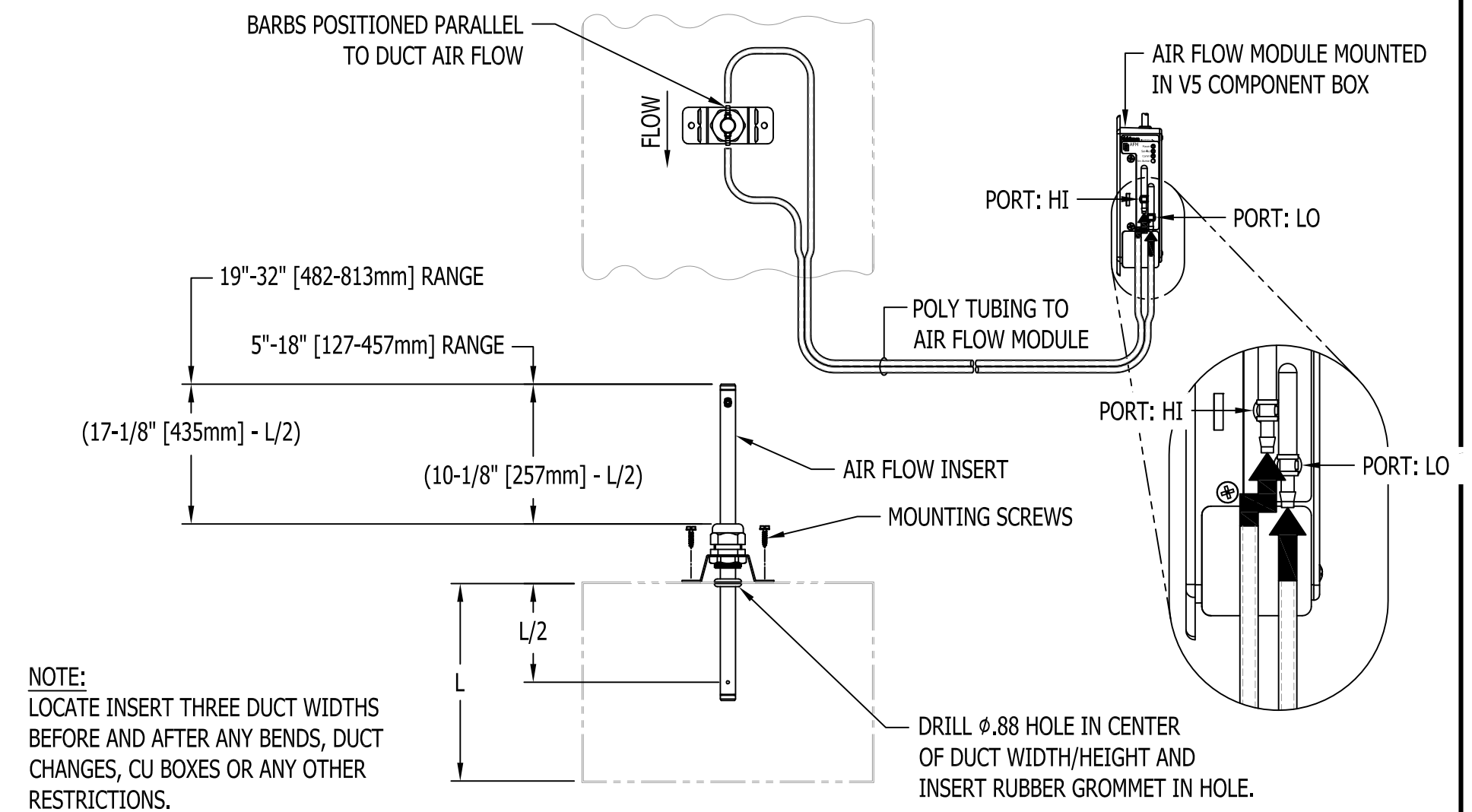
**9**  
153

**13**  
153



NOTE:  
JUNCTION BOXES AND CONDUIT NOT PROVIDED OR INSTALLED BY EDSTROM.

**2**  
153  
**LIGHT OVERRIDE MEMBRANE SWITCH w/JUNCTION BOX**

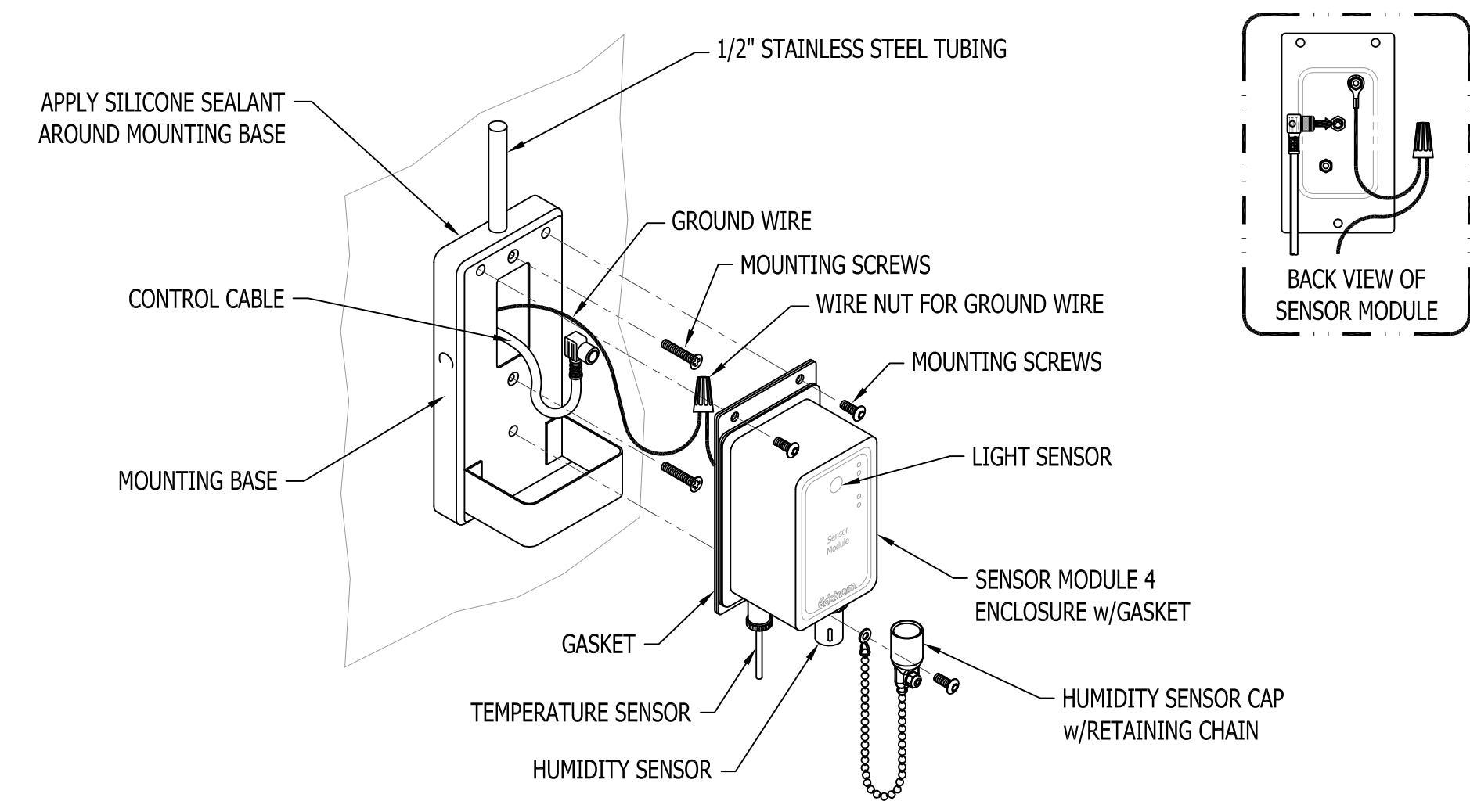


NOTE:  
LOCATE INSERT THREE DUCT WIDTHS BEFORE AND AFTER ANY BENDS, DUCT CHANGES, CJ BOXES OR ANY OTHER RESTRICTIONS.

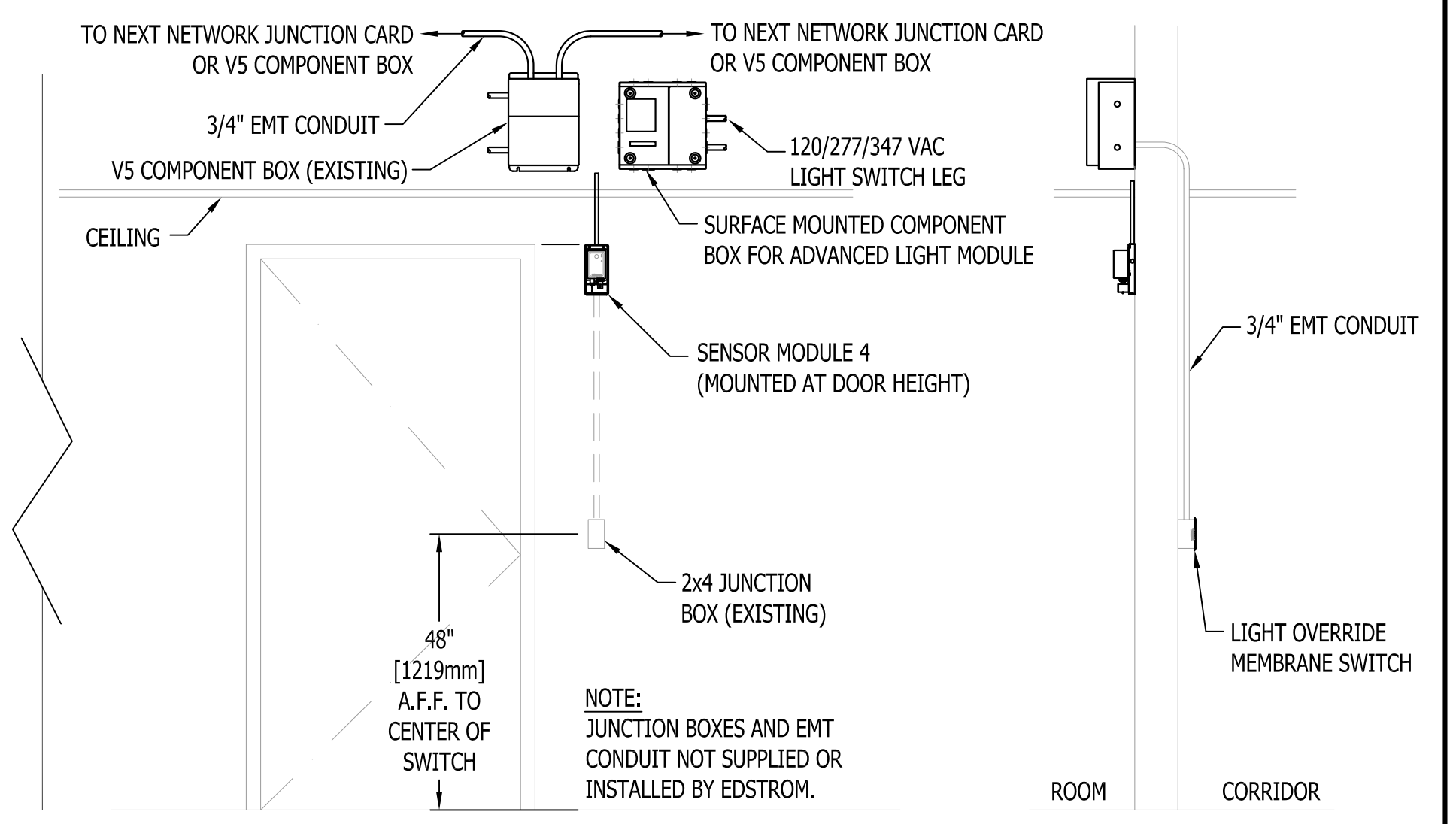
**6**  
153  
**AIR FLOW INSERT w/AIR FLOW MODULE**

**10**  
153

**14**  
153



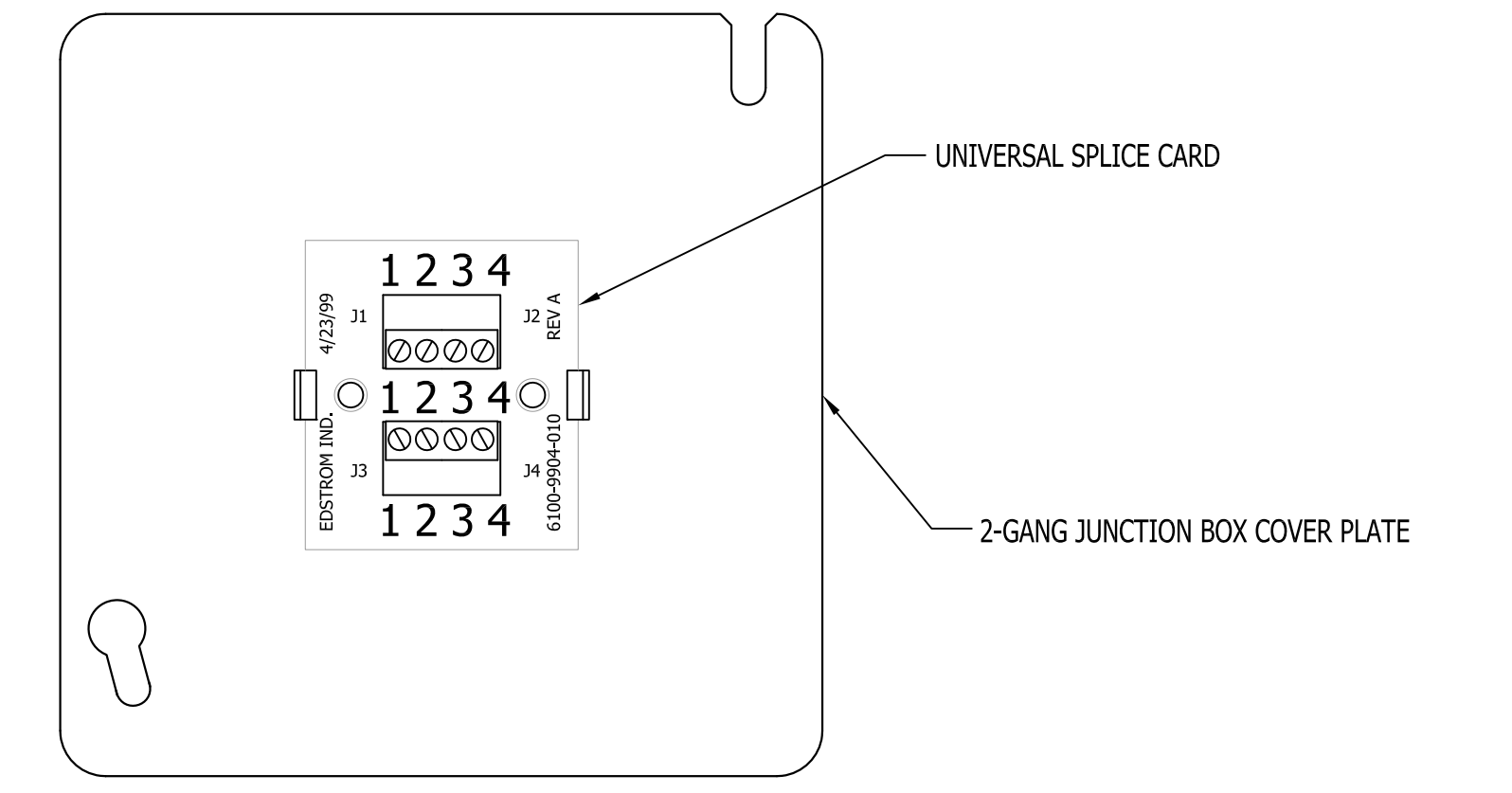
**3**  
153  
**SENSOR MODULE 4 For Temperature, Humidity & Light**



**7**  
153  
**ELEVATION VIEW FROM INSIDE ROOM FOR SENSOR MODULE 4 & LIGHT OVERRIDE MEMBRANE SWITCH**

**11**  
153

**15**  
153



NOTE:  
2-GANG JUNCTION BOX REQUIRED.

**4**  
153  
**NETWORK JUNCTION BOX**

**8**  
153

**12**  
153

**16**  
153

REV.	JOB NO.	REVISION	DRAWN	APPROVER 1	APPROVER 2	REV.	JOB NO.	REVISION	DRAWN	APPROVER 1	APPROVER 2	REV.	JOB NO.	REVISION	DRAWN	APPROVER 1	APPROVER 2
1	153	INITIAL DRAWING RELEASE	KGD	KGJ	KGJ	1	153		KGD	KGJ	KGJ	1	153		KGD	KGJ	KGJ

When applicable, the detail views on this drawing incorporate third angle projection.  
**PROPRIETARY DATA-INFORMATION:**  
 Reproduction or disclosure of data or information contained hereon without the explicit consent of Edstrom is forbidden.

**Edstrom**  
 819 Bakke Avenue, Waterford, WI 53185  
 Tel: 262.534.5181 Fax: 262.534.5184

ENVIRONMENTAL WATCHDOG (ESP) SYSTEM DETAILS FOR:  
 JESSE BROWN V.A. MEDICAL CENTER  
 BUILDING 11B/7th FLOOR/MEDICAL R&D SERVICES 278  
 CHICAGO, IL

PROJ SCALE: 1 = 1  
 E BORD  
 DATE: 05-01-17  
 DRAWING NO: 5110-9156-153  
 REV: A