

IMPORTANT — NOTES TO THE INSTALLER

RECEIVING MATERIAL
When unloading the truck, our shipping department bundles the material for shipping purposes. The hardware is packaged in individual plastic bags and then it is boxed. Make sure the hardware is accounted for, these packages are easily lost.
The bill of lading states the number of bundles and weight of that shipment. Before you sign the bill of lading, verify that all the bundles and cartons have been received, and that there is no apparent damage. Also note if the shipment was tapered or not. All shipments should be tapered unless noted on the bill of lading. Make note on the bill of lading of any discrepancies and/or damages, and notify Wildeck Inc. immediately.

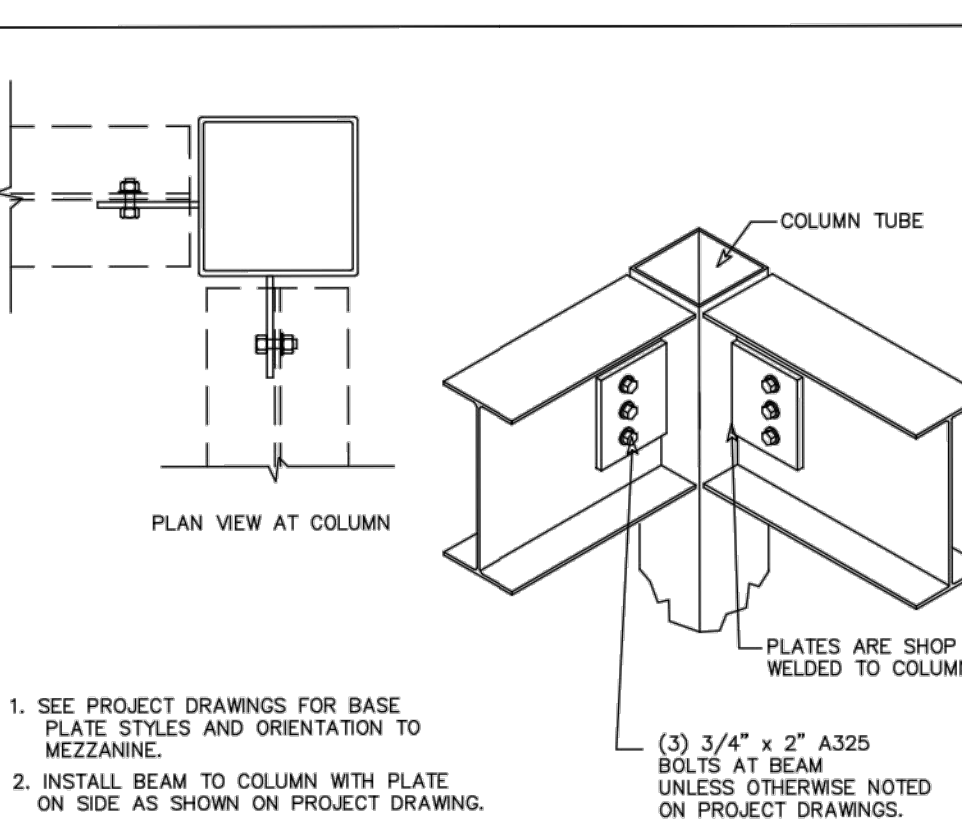
STAGING MATERIAL
Each bundle of material has a tag that shows the quantity and the piece mark of each item in it. It is also essential to point out that a mezzanine under construction should not be made available for use by anyone other than the construction crew building it. Any means of access to the mezzanine should be barricaded with WARNING signs to prevent access to the partially completed mezzanine.
The installer is fully responsible for the quality of craftsmanship of the mezzanine installation. Any deviation from the installation instructions will be corrected by the installer. Wildeck Inc. takes pride in their mezzanines. We expect the installer to do the same of the installation. Make sure the customer is satisfied and have the sign off sheet signed and returned to Wildeck Inc.

INSTALLATION
When you receive the shipment, be sure the drawings are stamped "APPROVED FOR INSTALLATION". Read the instructions and review the drawings thoroughly to familiarize yourself with the mezzanine and its construction. Install the mezzanine in strict compliance with the details shown on sheet INT-1 and INT-2 (if applicable).
All material is marked with piece marks that correspond to those marked on project plans, elevations, and sections. These designations are either a letter-number designation or a material length corresponding to the length of that piece.
For proper installation, all piece marks on C-section, wide flange beams, girders, and joists should be oriented as shown on the installation project construction drawings and facing up.
Rebar/bracing of any material can only be done with the consent of the engineering department of Wildeck Inc.
It is extremely important that decking be installed carefully, adhering to the installation instruction details provided. Uniform gaps at all joints and evenness of surfaces are very important to avoid tripping hazards. Extra care must be exercised in aisle areas, near stairs, and pallet drops. The decking must be uniform and evenly up to stairs and platforms, holding gaps as shown on the installation details.

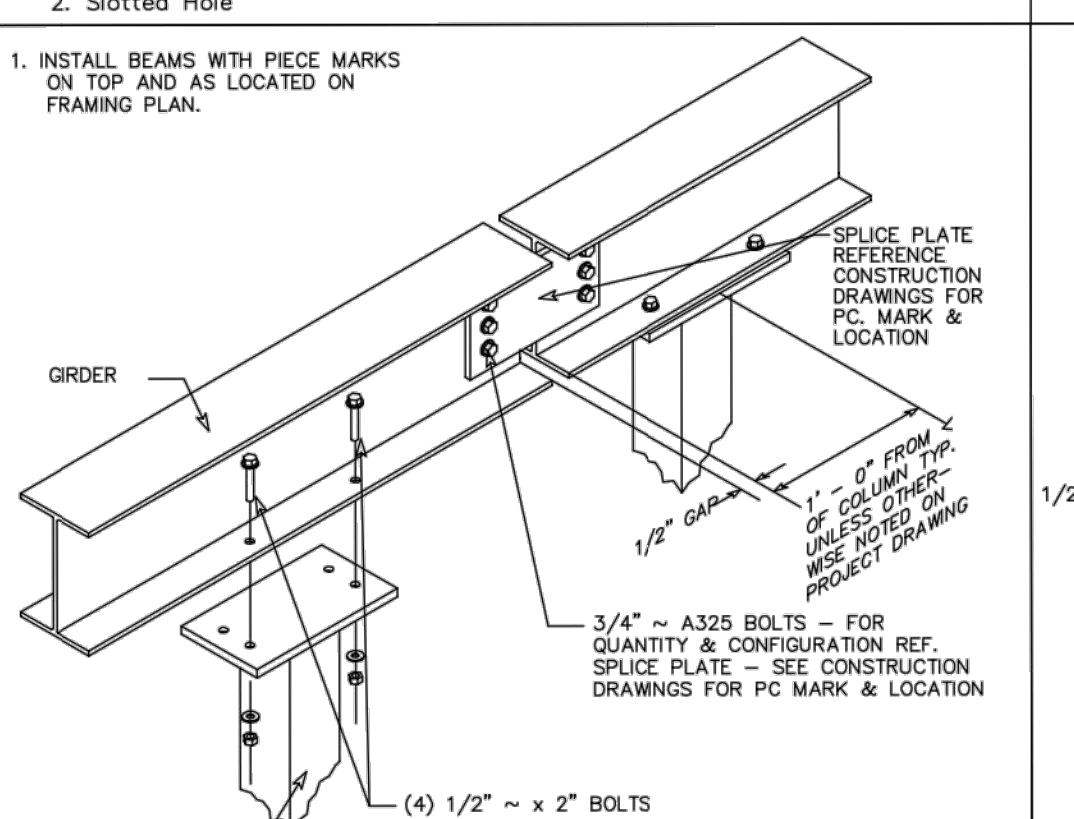
TOOL LIST
MANDATORY
1. Hammer drill w/ 3/8", 1/2", and 3/4" bit (9" or longer)
2. Screw gun with extra bits (3/16" hex, #2 Phillips)
3. (2) Sets of wrenches (3/8" thru 1 1/4")
4. Set of allen wrenches
5. #3 maul (hammer)
6. 4" level
7. Snap line
8. Tape measures (1) 25' and (1) 100' long
9. C-clamps
10. Drill 1/2" w/bits 3/16" thru 13/16"
11. Marking pens
12. Drift pins (2)
13. Band cutter
14. Forklift or come-along (#500)
15. Circular saw (for plywood deck, and metal blades for roof deck)
16. Reciprocating saw (Sawzall)
17. Ladders and electrical cords
18. Impact wrench
19. (2) 3" Vise grips — quick-clamp.
OPTIONAL
1. 3/16" Carbide tip drill (if job has tapcons)
2. Pop rivet gun (floor plate)
3. Socket set (3/8" thru 1 1/4")
4. #5 mallet
5. Crow bars (2)
6. Rope (1/2" x 1/2")
7. Carls
8. Combination square
9. Carpenter's square
10. 2" pipe cutter
11. Outting torch
12. Chem. stud driver.

BOLT INSTALLATION
It is also essential to point out that a mezzanine under construction should not be made available for use by anyone other than the construction crew building it. Any means of access to the mezzanine should be barricaded with WARNING signs to prevent access to the partially completed mezzanine.
The installer is fully responsible for the quality of craftsmanship of the mezzanine installation. Any deviation from the installation instructions will be corrected by the installer. Wildeck Inc. takes pride in their mezzanines. We expect the installer to do the same of the installation. Make sure the customer is satisfied and have the sign off sheet signed and returned to Wildeck Inc.

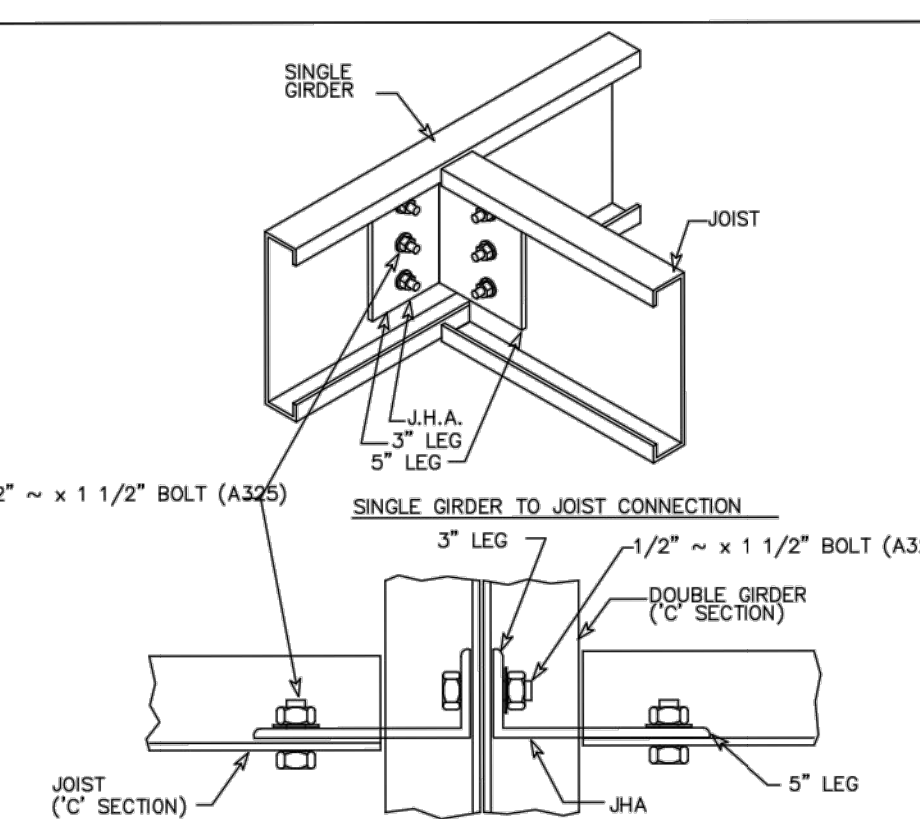
WASHER REQUIREMENTS
A. Washers are not required in snug-tightened joints, but may be used.
The flat washer goes behind the rail.
B. Washers must be used in the following conditions:
1. Sloping Surfaces
2. Section Holes



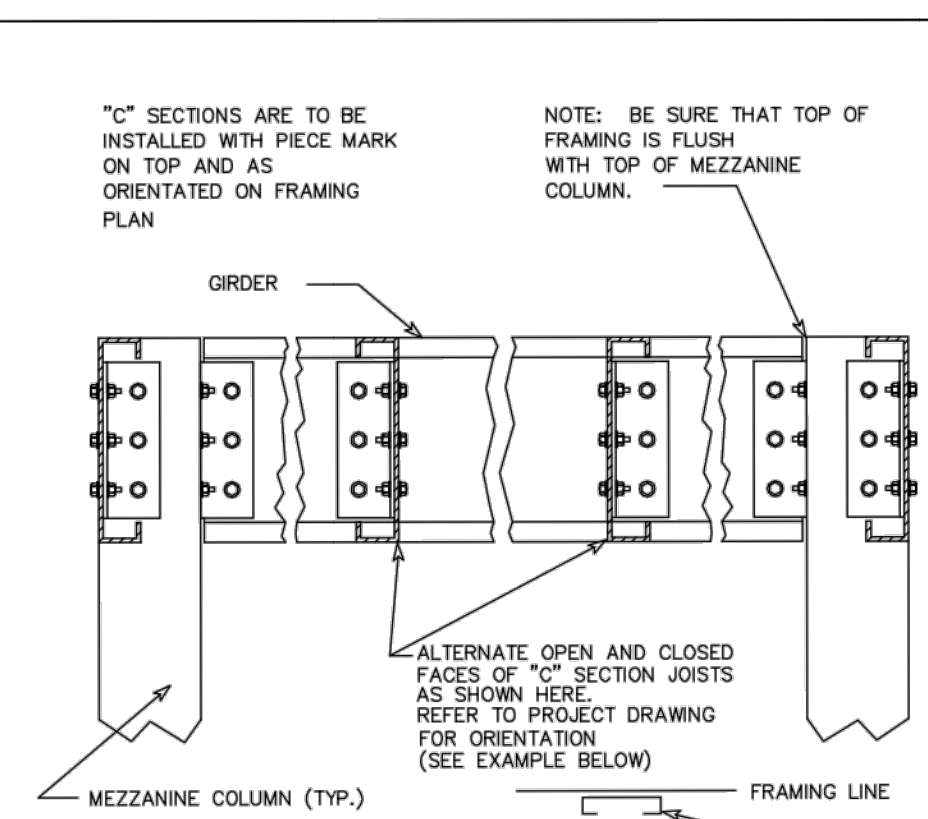
DETAIL 3 WIDE FLANGE BEAM BOLTED TO COLUMN



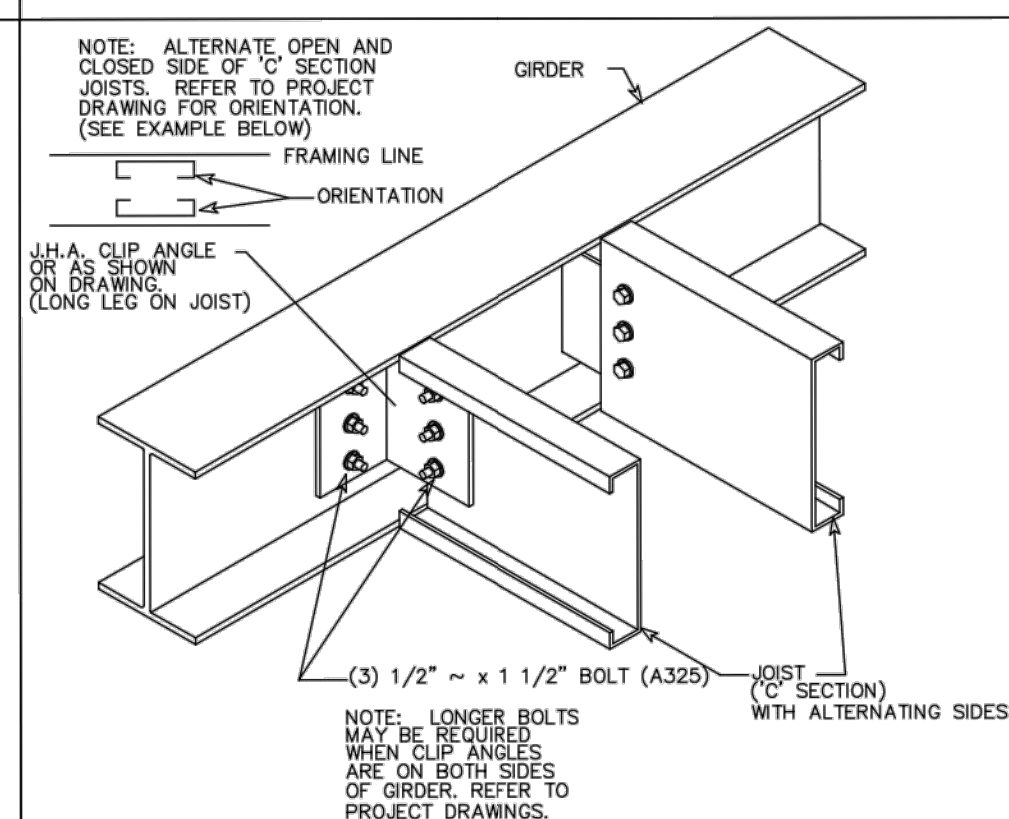
DETAIL 4R WIDE FLANGE BEAM OVER COLUMN



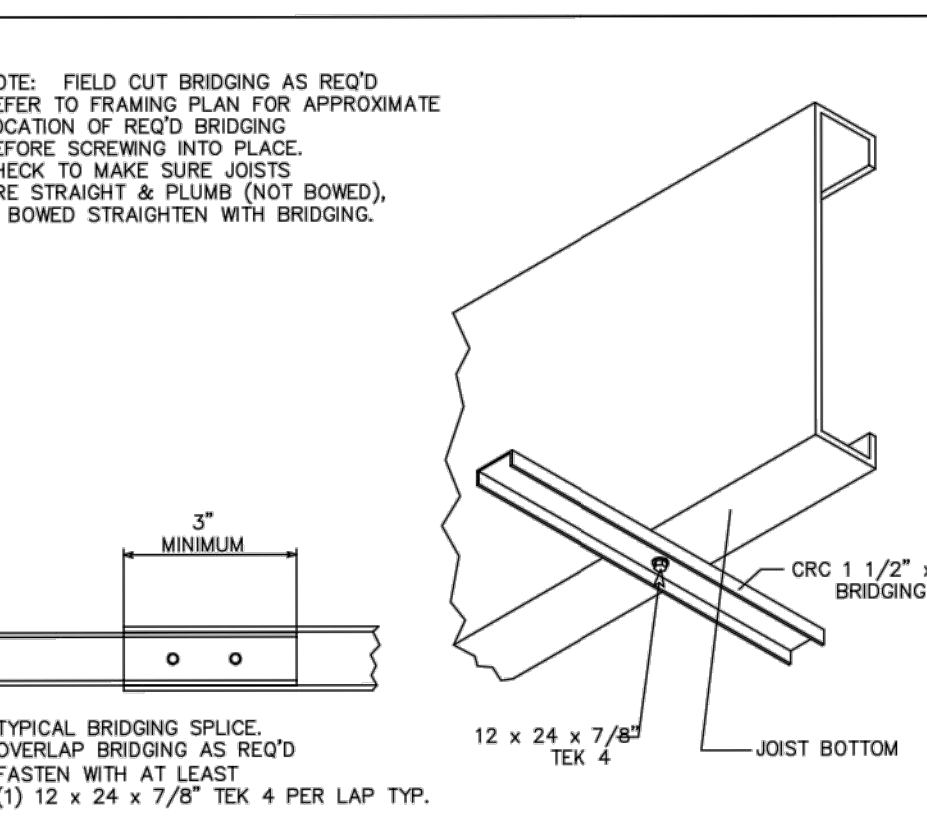
DETAIL 10 SECTION JOIST & GIRDER CONNECTION



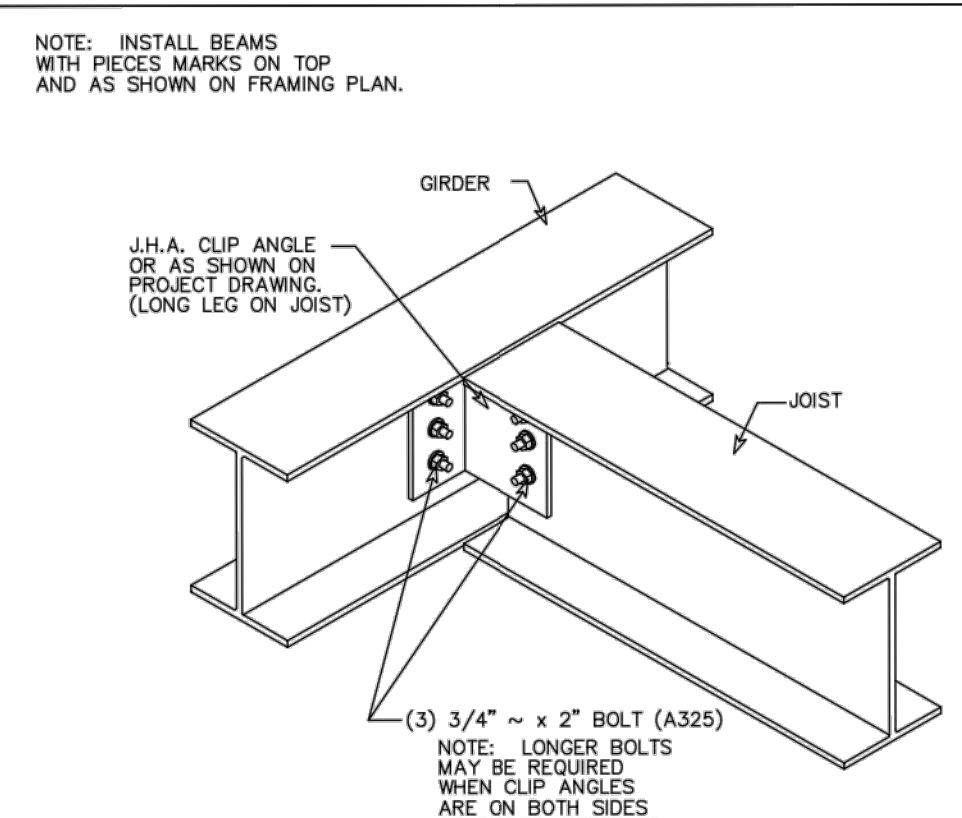
DETAIL 11 'C' SECTION JOIST ORIENTATION



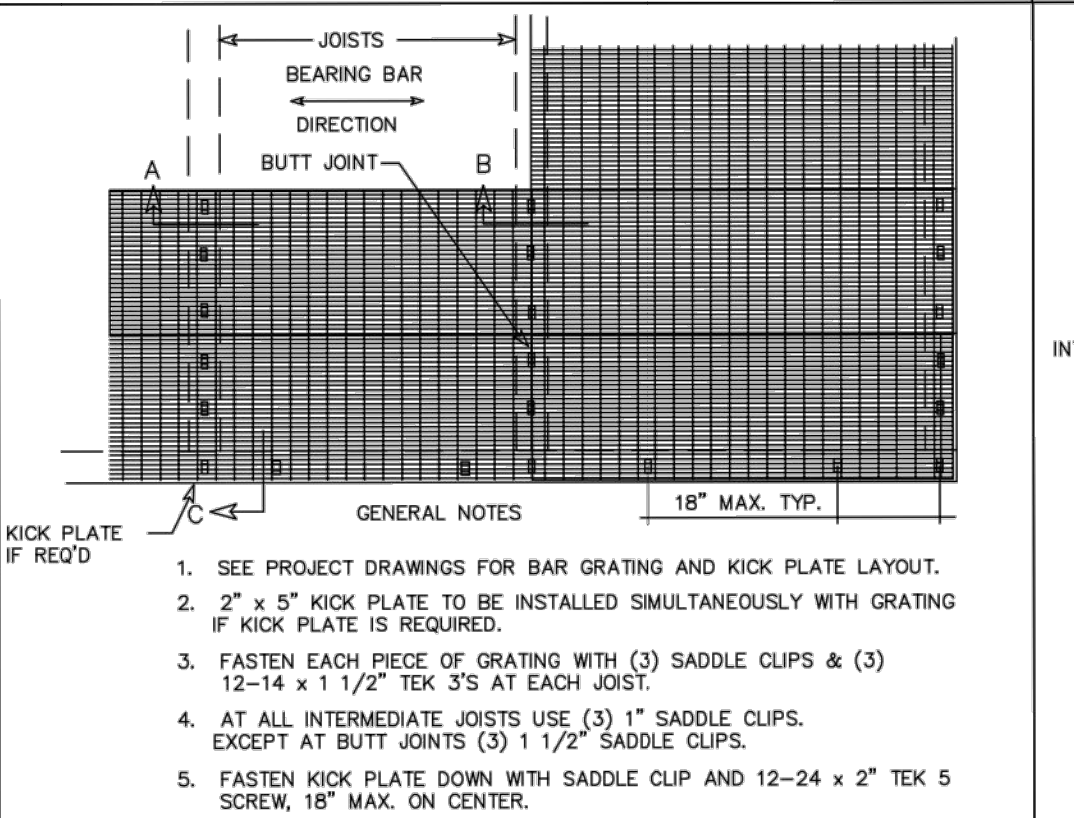
DETAIL 12 'C' SECTION TO BEAM CONNECTION



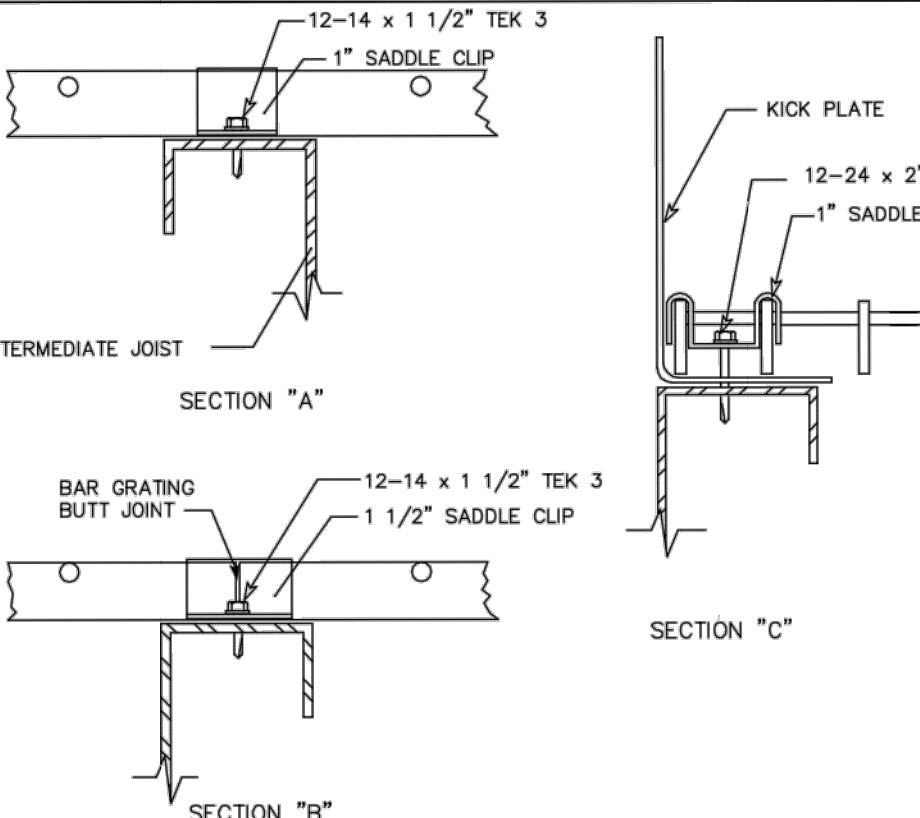
DETAIL 13 'C' SECTION BRIDGING DETAIL



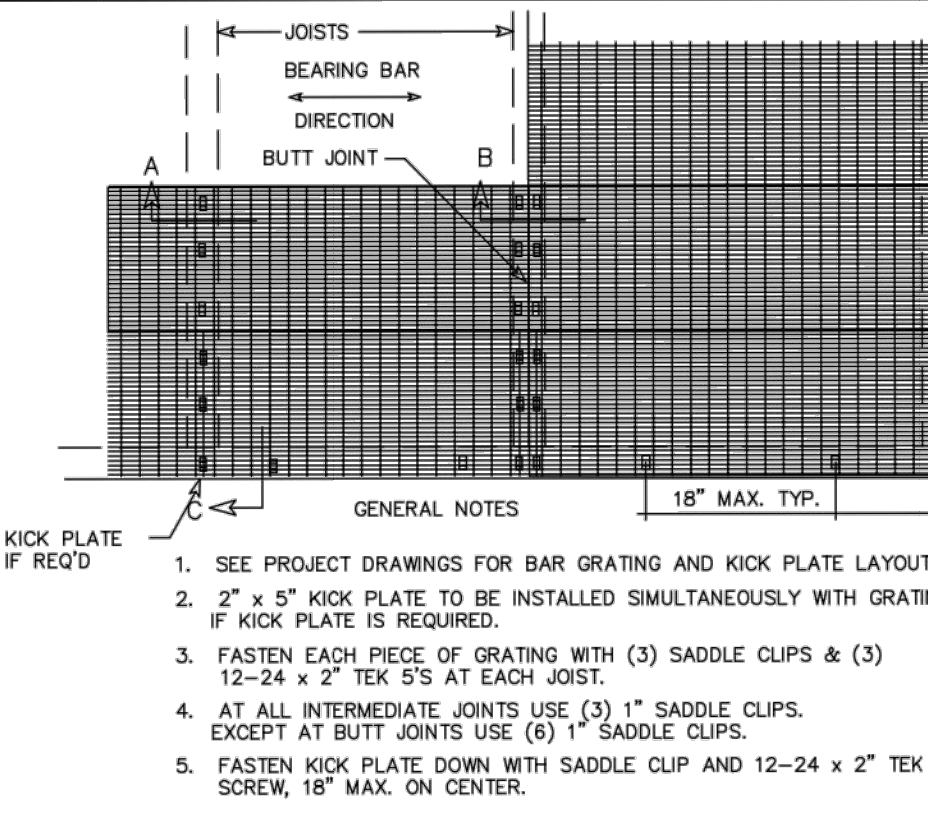
DETAIL 14 BEAM TO BEAM CONNECTION



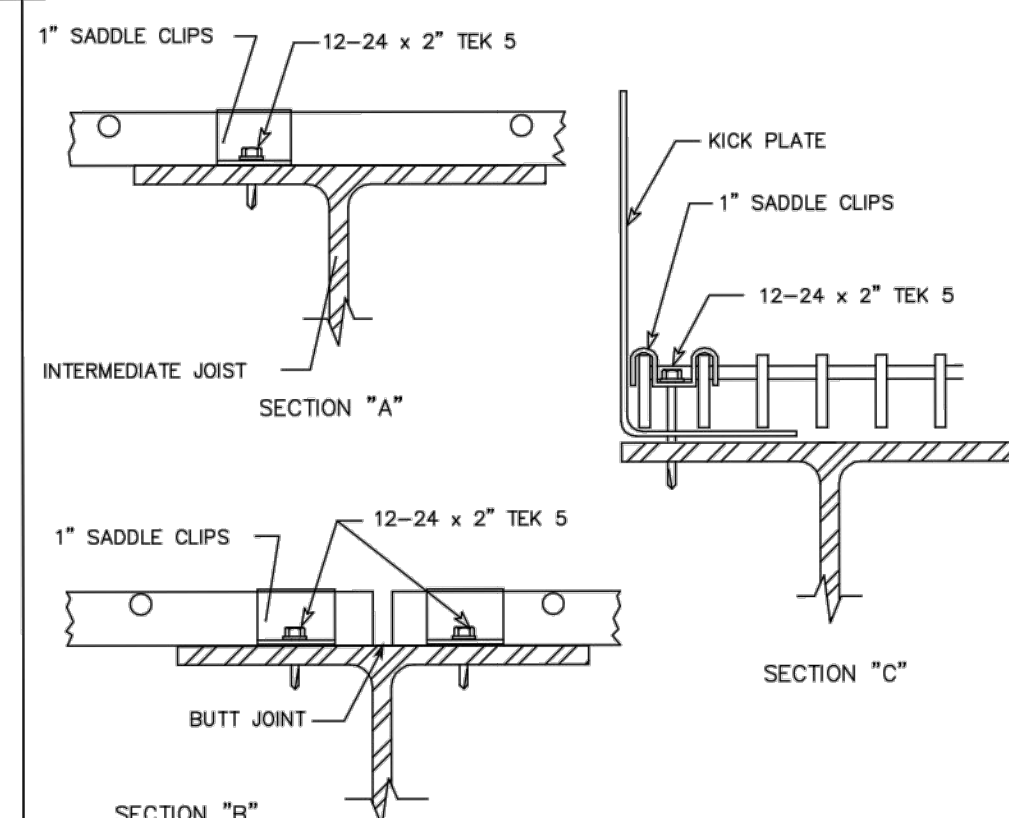
DETAIL 19A1 BAR GRATING INSTALLATION LAYOUT WITH 'C' SECTION



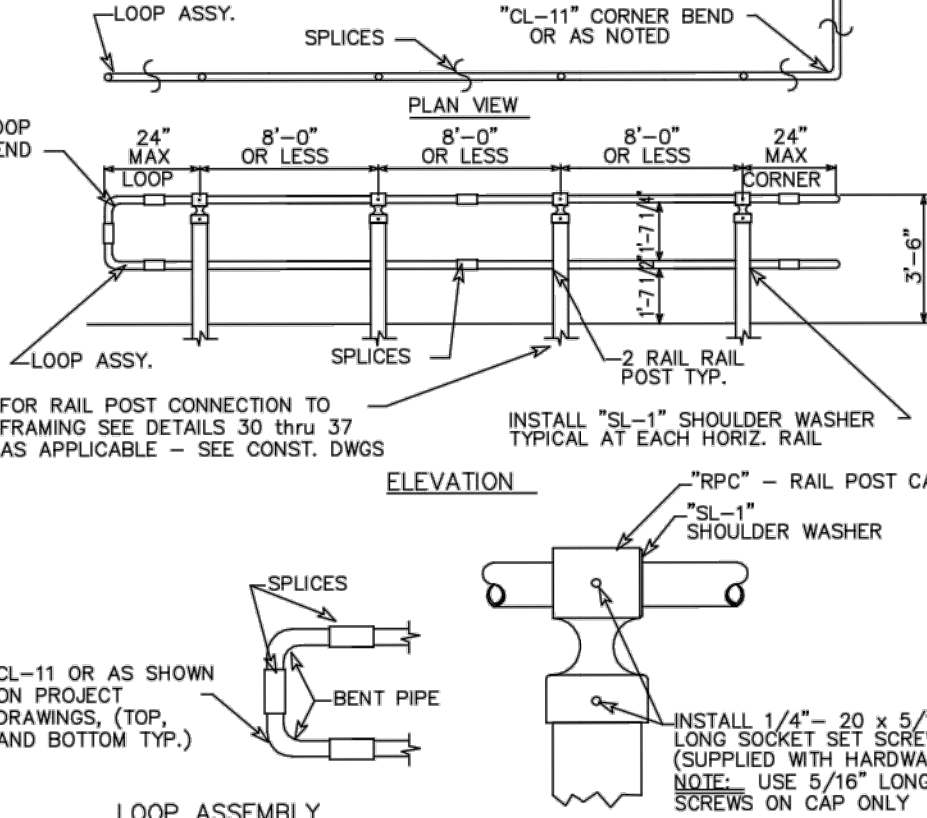
DETAIL 19A BAR GRATING TO 'C' SECTION



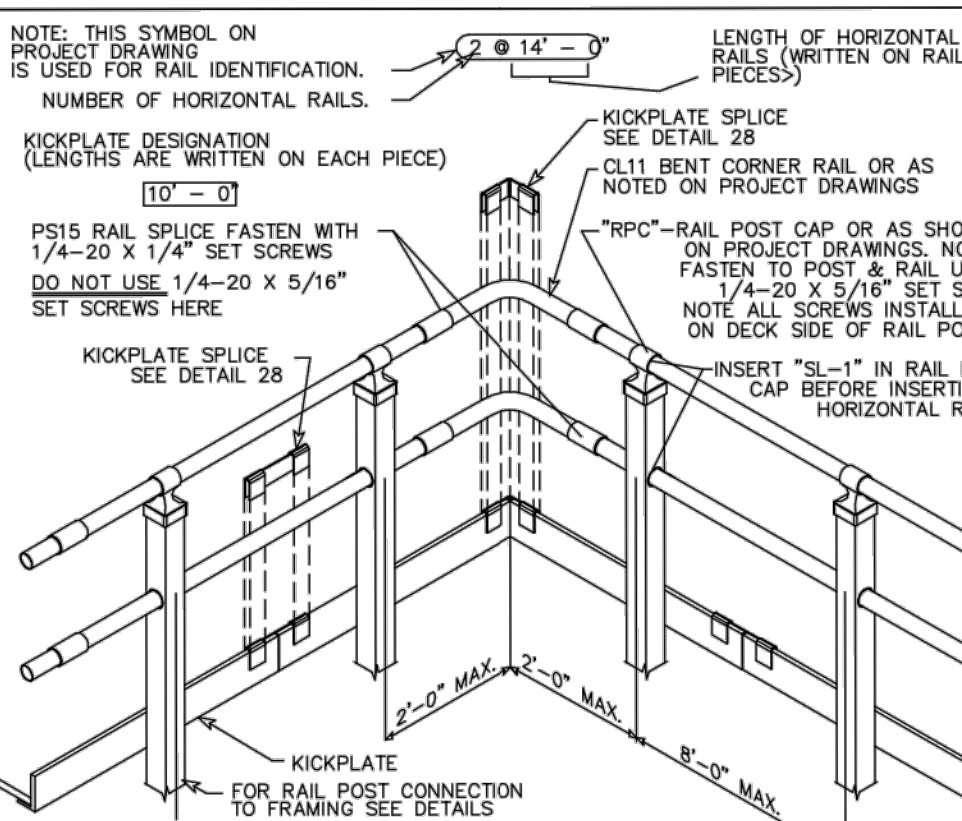
DETAIL 19B1 BAR GRATING INSTALLATION LAYOUT WITH WIDE FLANGE BEAMS



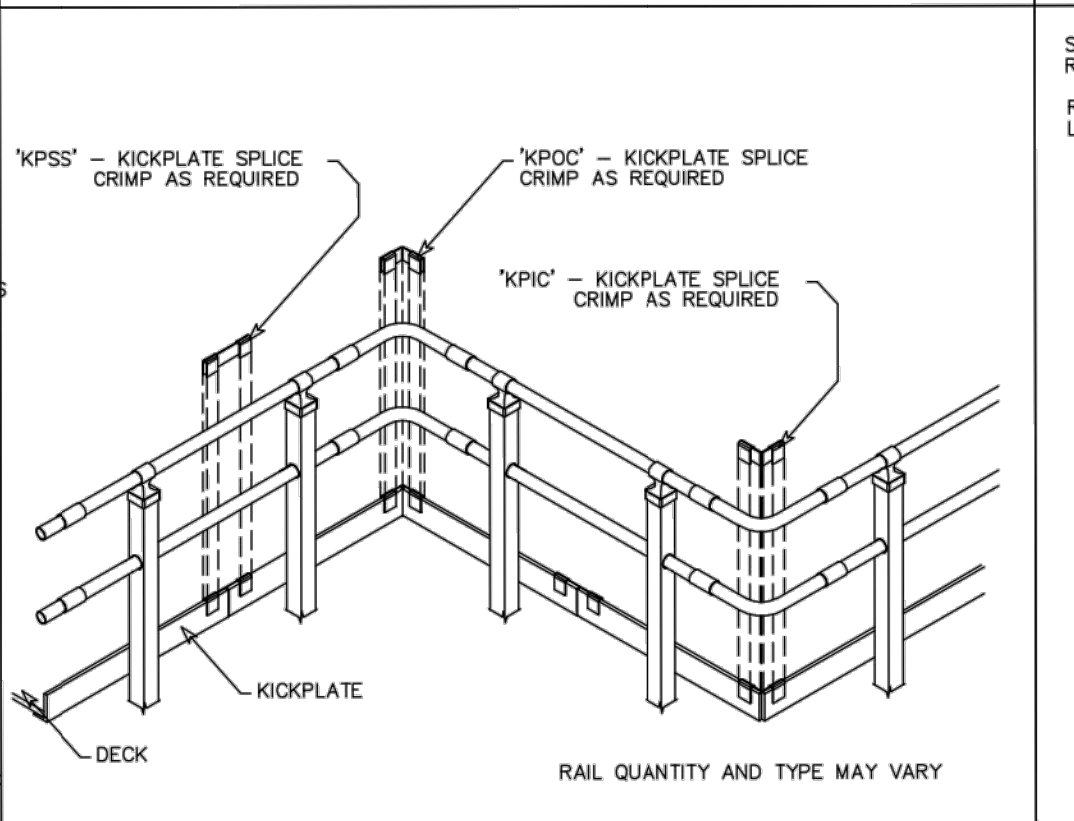
DETAIL 19B BAR GRATING TO WIDE FLANGE BEAM



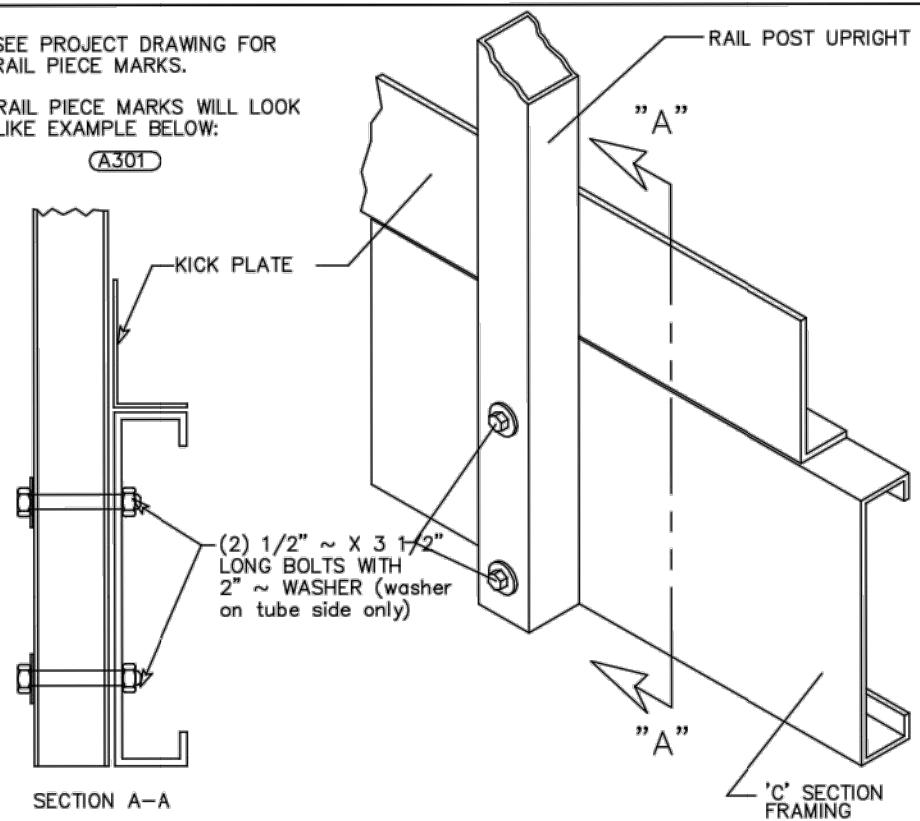
DETAIL 21R TWO RAIL ASSEMBLY DETAIL



DETAIL 23 2 RAIL CORNER



DETAIL 28 KICKPLATE SPLICE



DETAIL 33 RAIL POST CONNECTION TO 'C' SECTION

WILDECK, INC. RESERVES THE PROPRIETARY RIGHTS TO THIS DRAWING AND THE DATA SHOWN THEREON. SAID DRAWING AND/OR DATA ARE CONFIDENTIAL AND ARE NOT TO BE USED OR REPRODUCED FOR ANY PURPOSES WITHOUT THE WRITTEN CONSENT OF WILDECK, INC.

DRAWING TITLE
**BLDG 2 - FOURTH FLOOR - AREA G2
PROPOSED CANTEN STORAGE**

APPROVED: PROJECT DIRECTOR

PROJECT TITLE
SLVHCS REPLACEMENT MEDICAL
CENTER PROJECT

LOCATION
NEW ORLEANS, LOUISIANA

DATE ? CHECKED S.G. DRAWN E.B.

PROJECT NUMBER BUILDING NUMBER
02

DOCUMENT SET PACKAGE

DRAWING NUMBER

A-2

OFFICE OF
CONSTRUCTION
AND FACILITIES
MANAGEMENT

Department of
Veterans Affairs

REVISIONS: DATE

VA FORM 08-6231