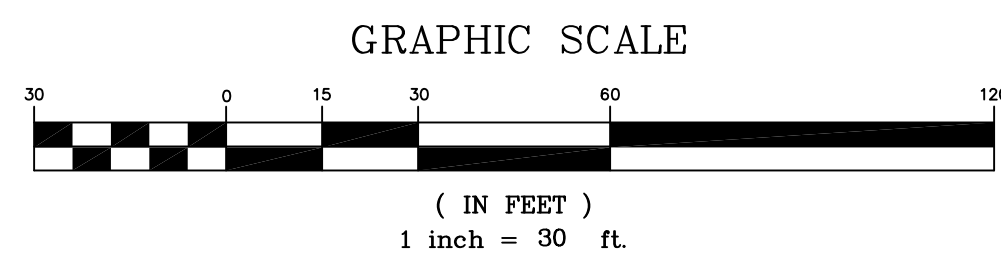
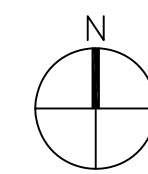


# LEGEND:

- EXISTING PROPERTY LINE
- EXISTING FENCE
- EXISTING WOODLINE/VEGETATION
- EXISTING WATERLINE
- EXISTING GAS LINE
- EXISTING SANITARY SEWER FORCE MAIN
- EXISTING OVERHEAD UTILITIES
- ITEM TO BE REMOVED/DEMOLISHED
- SILT FENCE
- EXISTING SPOT ELEVATION
- EXISTING CONTOUR
- EXISTING ASPHALT ROADWAY
- SOIL BORING LOCATION



UNITED STATES NAVY  
PARCEL #31229-000-000  
O.R. BOOK 47 PG 141

KCI TBM#6  
N:424060.06  
E:1575062.77  
ELEV:18.50

INSTALL SILT FENCE  
EROSION CONTROL  
(F1/CD501)

AREA TO REMAIN  
UNDISTURBED

REMOVE EX. TREES  
/ VEGETATION

REMOVE EX. 15"  
PINE

SMALL TREES AND BRUSH  
INSTALL SILT FENCE  
EROSION CONTROL  
(F1/CD501)

REMOVE EX. ASPHALT  
& BASE

LIMITS OF NAVY  
DEMOLITION CONTRACT  
(THIS SHEET ONLY) N.I.C.

REMOVE EX. TREES  
/ VEGETATION

EX. 12", 14" & 16"  
OAK TREES TO REMAIN,  
INSTALL TREE PROTECTION  
BARRICADE. (D4/CD501)

CONST. 20' WIDE 50'  
LONG CONSTRUCTION ENTRANCE  
(D5/CD501)

REMOVE EX. TREES  
/ VEGETATION

REMOVE EX. ASPHALT  
& BASE

UNITED STATES NAVY  
PARCEL #31229-000-000  
O.R. BOOK 47 PG 141

INSTALL SILT FENCE  
EROSION CONTROL  
(F1/CD501)

NAVAL CONC.  
MONUMENT CO-51  
N:423508.71  
E:1575022.34  
ELEV:14.59

MAGNOLIA BEACH ROAD  
COUNTY ROAD 392-B  
60' PUBLIC R/W

## CONSULTANTS:

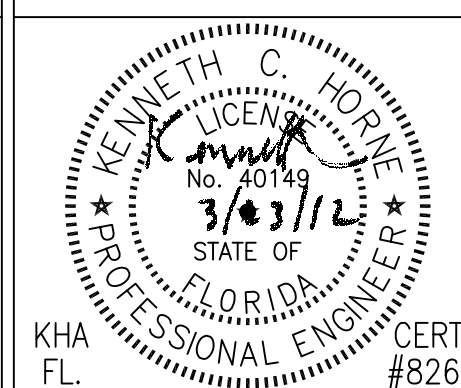
CIVIL  
KENNETH HORNE & ASSOCIATES  
7201 NORTH 9TH AVENUE, STE. 6  
PENSACOLA, FLORIDA 32504  
PH (850) 471-9008  
FX (850) 471-0093

COMM/RS  
SCHMIDT CONSULTING GROUP, INC.  
40 S. PALAFOX PLACE, STE. 300  
PENSACOLA, FLORIDA 32502  
PH (850) 438-0050  
FX (850) 432-8651

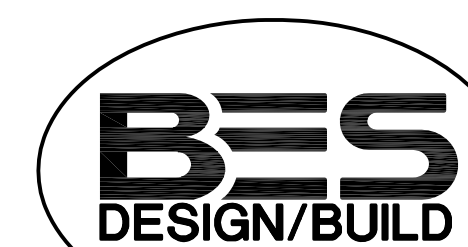
SURVEYORS  
KCI TECHNOLOGIES, INC.  
10401 HIGHLAND MANOR DRIVE, SUITE 120  
TAMPA, FLORIDA 33610  
PH (813) 740-2300

LANDSCAPE ARCHITECT  
CSA GROUP, INC.  
6300 PICCADILLY SQUARE DRIVE  
MOBILE, ALABAMA 36609  
PH (251) 344-4023  
FX (251) 344-4052

ARCHITECTURE  
BULLOCK TOE ASSOCIATES, INC.  
809 EAST CERVANTES STREET  
PENSACOLA, FL 32501  
PH (850) 438-0444  
FX (850) 432-8208



## ARCHITECT/ENGINEERS:



BES DESIGN/BUILD, LLC  
766 Middle St, Fairhope, AL 36532  
Phone: 251.990.5778 Fax: 251.990.3716

Drawing Title

DEMOLITION PLAN

Approved Project Director

Project Title  
PANAMA CITY  
JOINT OUTPATIENT CLINIC  
VA GULF COAST HEALTH CARE

Location  
PANAMA CITY, FLORIDA

Date  
MARCH 2012

Checked  
KCH

Drawn  
LRR

Project Number

520-326

Building Number

CD101

Dwg 1 of 21

Office of  
Construction  
and Facilities  
Management

