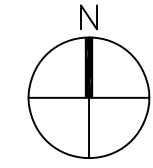
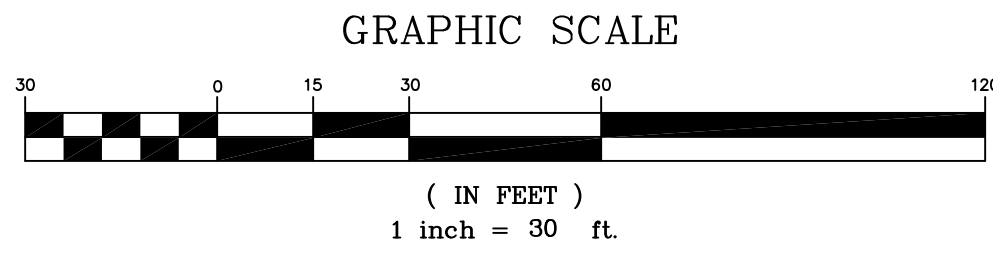


# LEGEND:

- EXISTING PROPERTY LINE
- EXISTING FENCE
- NEW FENCE
- EXISTING WOODLINE/VEGETATION
- NEW WOODLINE/VEGETATION
- EXISTING WATERLINE
- EXISTING GAS LINE
- EXISTING SANITARY SEWER FORCE MAIN
- EXISTING OVERHEAD UTILITIES
- POINT NUMBER (X) MARKS POINT LOCATION



KCI TBM#6  
N: 424080.06  
E: 1575062.77  
ELEV: 16.50

RETENTION POND STAKING			RETENTION POND STAKING		
POINT #	NORTHING	EASTING	POINT #	NORTHING	EASTING
1	423969.2087	1575211.1397	18	423773.6871	1575953.7902
2	424072.0866	1575410.5449	19	423608.7093	1575949.9205
3	423955.6580	1575408.2858	20	423609.7419	1575898.1398
4	423958.0949	1575282.6944	21	423667.9829	1575875.3289
5	423933.5309	1575245.4593	22	423680.5899	1575863.2019
6	424110.6721	1575288.2059	23	423858.8074	1574966.1079
7	424104.6799	1575954.5520	24	423936.4676	1575005.8961
8	424011.0184	1575952.3551	25	424039.6027	1575194.6021
9	424011.4360	1575930.8361	26	424024.2437	1575202.5262
10	424036.5812	1575912.1037	27	423930.2340	1575009.1122
11	424037.4394	1575867.8730	28	423872.0434	1574972.0525
12	424071.0996	1575862.9168	29	423872.1510	1574966.6319
13	424109.4163	1575881.2478	30	423856.6895	1574972.0465
14	424105.6757	1575912.4927	31	424038.6028	1575205.2139
15	423733.7862	1575864.2340	32	424154.2300	1575416.7766
16	423732.7774	1575916.2243	33	424138.8676	1575424.7024
17	423774.4559	1575917.0330	34	424033.4711	1575207.8615

MAGNOLIA BEACH ROAD  
COUNTY ROAD 392-B  
60' PUBLIC R/W

## CONSULTANTS:

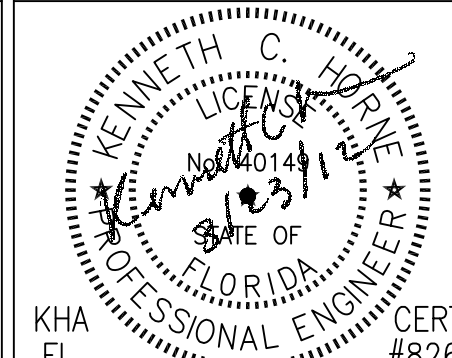
CIVIL:  
KENNETH HORNE & ASSOCIATES  
7201 NORTH 9TH AVENUE, STE. 8  
PENSACOLA, FLORIDA 32504  
PH: (850) 471-9008  
FX: (850) 471-0093

LANDSCAPE ARCHITECT:  
CSA GROUP, INC.  
6300 PICCADILLY SQUARE DRIVE  
MOBILE, ALABAMA 36689  
PH: (251) 344-4023  
FX: (251) 344-4052

COMMENTS:  
SCHMIDT CONSULTING GROUP, INC.  
40 S. PALM FOX PLACE, STE. 300  
PENSACOLA, FLORIDA 32502  
PH: (850) 438-0050  
FX: (850) 432-8651

ARCHITECTURE:  
BULLOCK TOE ASSOCIATES, INC.  
809 EAST CERVANTES STREET  
PENSACOLA, FL. 32501  
PH: (850) 438-4444  
FX: (850) 432-8208

SURVEYORS:  
KCI TECHNOLOGIES, INC.  
10401 HIGHLAND MANOR DRIVE, SUITE 120  
TAMPA, FLORIDA 33610  
PH: (813) 740-2300



## ARCHITECT/ENGINEERS:



BES DESIGN/BUILD, LLC  
766 Middle St, Fairhope, AL 36532  
Phone: 251.990.5778 Fax: 251.990.3162

Drawing Title  
SITE GEOMETRY PLAN

Approved Project Director

Project Title  
PANAMA CITY  
JOINT OUTPATIENT CLINIC  
VA GULF COAST HEALTH CARE

Location  
PANAMA CITY, FLORIDA

Date  
MARCH 2012

Checked  
KCH

Drawn  
LPR

Project Number  
520-326

Building Number  
-

Drawing Number  
CS102  
Dwg. 4 of 21

Office of  
Construction  
and Facilities  
Management

