

# LEGEND:

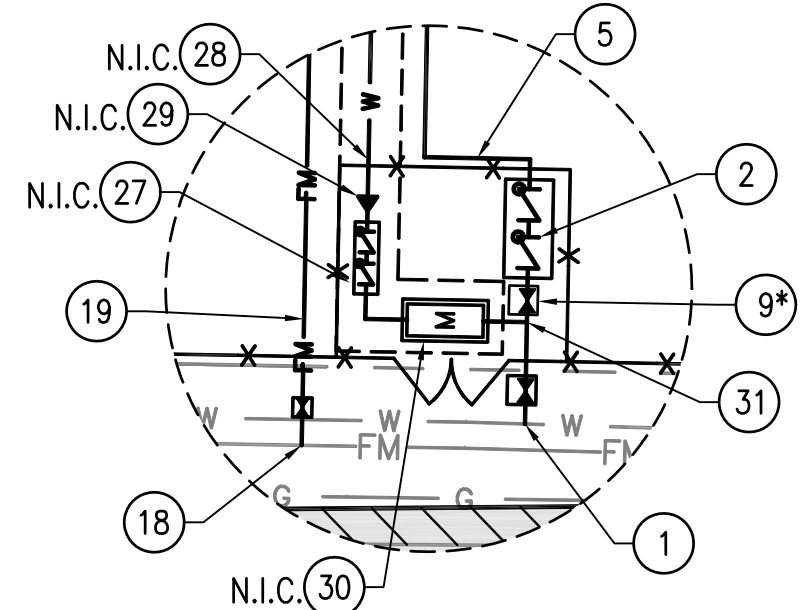
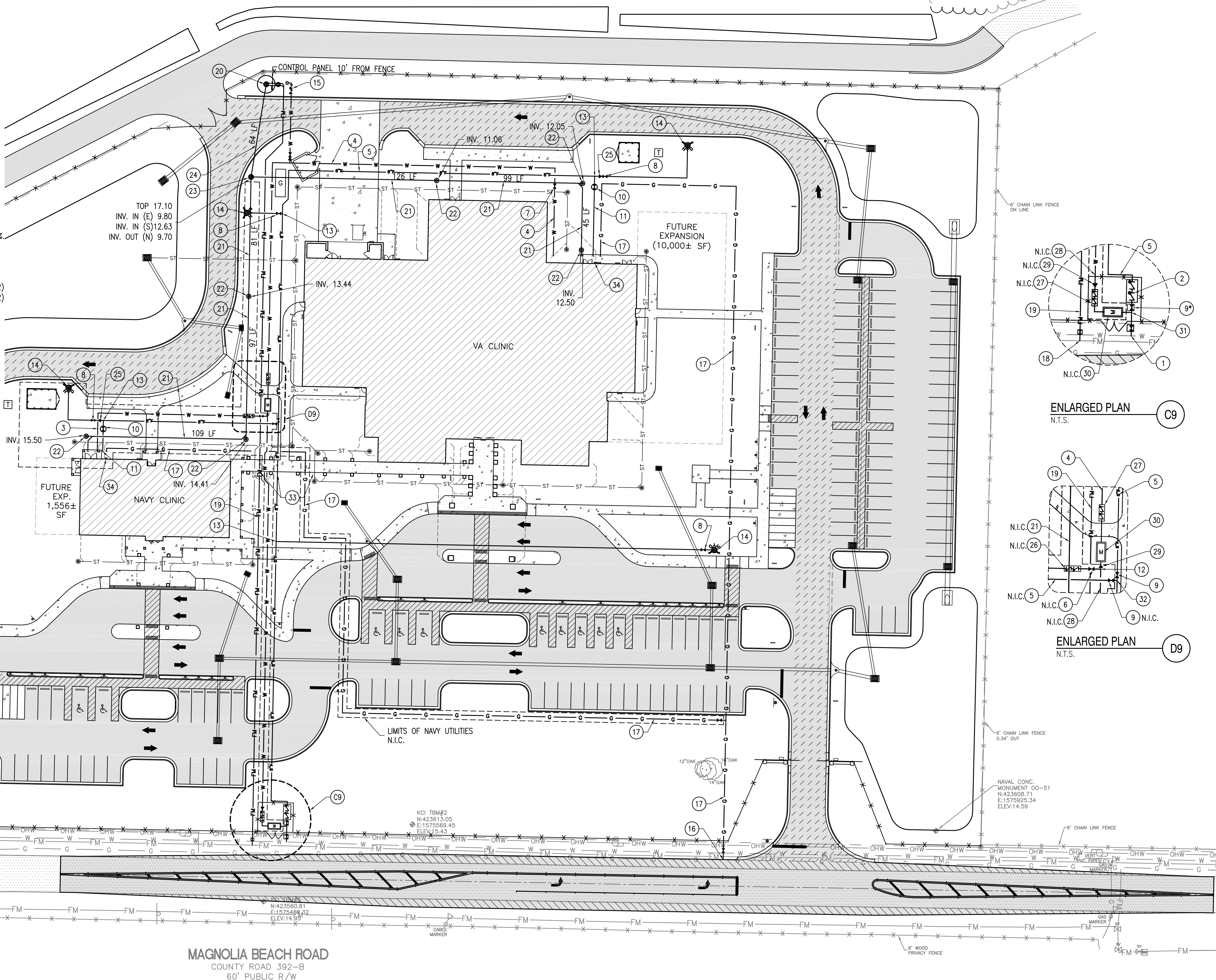
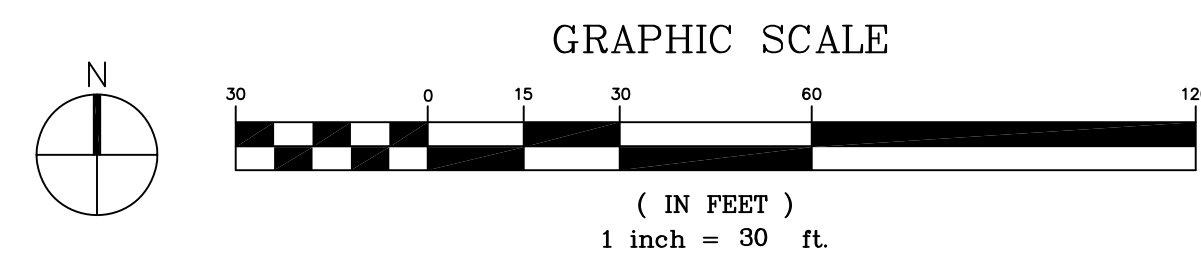
- EXISTING PROPERTY LINE
- EXISTING FENCE
- NEW FENCE
- EXISTING WOODLINE/VEGETATION
- NEW WOODLINE/VEGETATION
- EXISTING WATERLINE
- NEW WATER LINE
- NEW 8" FIRE LINE
- EXISTING GAS LINE
- NEW GAS LINE
- EXISTING SANITARY SEWER FORCE MAIN
- NEW SANITARY SEWER FORCE MAIN
- NEW STORM WATER LINE
- EXISTING OVERHEAD UTILITIES
- NEW GATE VALVE (C8/CU501)
- NEW POST INDICATOR VALVE (B4/CU501)
- NEW FIRE HYDRANT (E3/CU501)
- STORM
- NEW CLEAN-OUT (E8/CU501)
- NEW FDOT TYPE "E" INLET
- WATER METER

## NOTES:

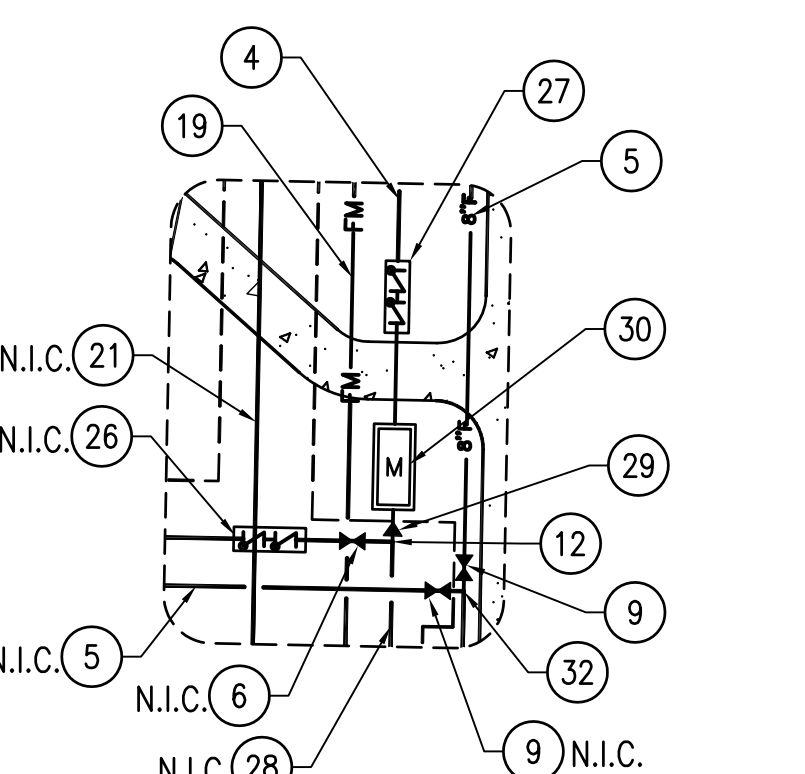
- STORMWATER PIPING AND STRUCTURES ARE SHOWN FOR UTILITY COORDINATION ONLY. FOR DETAILED STORMWATER DESIGN, SEE SHEET CG101.
- SANITARY SEWER FORCE MAIN THAT IS PARALLEL AND HAS LESS THAN 10' IN HORIZONTAL SEPARATION FROM WATER LINE, SHALL BE INSTALLED 18" MINIMUM DEEPER THAN WATERLINE.

# KEY NOTES:

- CONNECT TO EXISTING 8" PVC WATERMAIN. INSTALL 8" TAPPING SLEEVE & VALVE (E2/CU502) & (E5/CU502).
- INSTALL 8" DOUBLE DETECTOR CHECK BFP WITH INSULATED ENCLOSURE. (A7/CU502)
- INSTALL 2" PVC DOMESTIC WATERLINE.
- INSTALL 3" PVC DOMESTIC WATERLINE.
- INSTALL 8" AWWA C900 DR18 PVC FIRE LINE.
- INSTALL 2" GTV. (C8/CU501)
- INSTALL 3" GTV. (C8/CU501)
- INSTALL 6" GTV. (C8/CU501)
- INSTALL 8" GTV. (C8/CU501 WITHIN PROPERTY) OR \* (E5/CU502 AT THE PUBLIC R/W)
- INSTALL 6" PIV. (C3/CU501)
- INSTALL 6" AWWA C900 DR18 PVC FIRELINE.
- INSTALL 4"x2" TEE.
- INSTALL 8"x6" TEE.
- INSTALL 6" FIRE HYDRANT. (E3/CU501)
- INSTALL 3"x1" REDUCER, 1" GTV, 1" RP2 BFP W/INSULATED ENCLOSURE & HOSE BIBB.
- CONNECT TO EXISTING 4" GAS MAIN, INSTALL 2" VALVE.
- INSTALL 2" PE GAS LINE.
- CONNECT TO EXISTING 8" PVC SANITARY SEWER FM, INSTALL 8"x2" TAPPING SLEEVE & VALVE (E2/CU502) & (E3/CU502).
- INSTALL 2" PVC SANITARY SEWER FORCE MAIN.
- INSTALL SANITARY SEWER LIFT STATION. (A1/CU503)
- INSTALL 6" ASTM 3034 PVC SANITARY SEWER LATERAL @ 1.0%.
- INSTALL CLEAN-OUT (E8/CU501).
- INSTALL SANITARY SEWER MANHOLE. (E6/CU501)
- INSTALL 8" PVC SANITARY SEWER PIPE @ 0.40%.
- INSTALL 8"x6" REDUCER.
- INSTALL 2" RP2 BFP WITH INSULATED ENCLOSURE. (A2/CU502)
- INSTALL 3" RP2 BFP WITH INSULATED ENCLOSURE. (A5/CU502)
- INSTALL 4" PVC DOMESTIC WATERLINE.
- INSTALL REDUCER AS REQUIRED.
- INSTALL 3" METER & METER VAULT. WATER METER SHALL BE SIZED FOR 273 FIXTURE UNITS, 3" MINIMUM. (E8/CU502)
- INSTALL 8"x3" TEE.
- INSTALL 8" TEE.
- CLOSELY COORDINATE UTILITY LOCATIONS WITH STRUCTURAL FOOTINGS.
- FIRE DEPARTMENT CONNECTION. (SEE SHEET FP101)



ENLARGED PLAN  
N.T.S.



ENLARGED PLAN  
N.T.S.

MAGNOLIA BEACH ROAD  
COUNTY ROAD 392-B  
60' PUBLIC R/W

## CONSULTANTS:

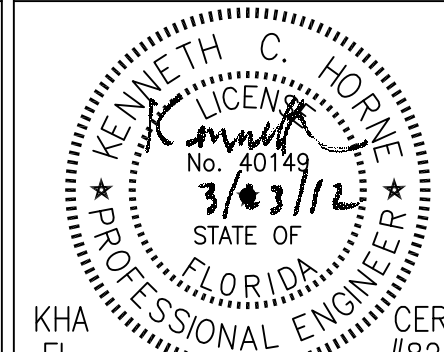
CIVIL  
KENNETH HORNE & ASSOCIATES  
7201 NORTH 9TH AVENUE, STE. 6  
PENSACOLA, FLORIDA 32504  
PH (850) 471-9008  
FX (850) 471-0093

COMMENTS  
SCHMIDT CONSULTING GROUP, INC.  
40 S. PALMFOX PLACE, STE. 300  
PENSACOLA, FLORIDA 32502  
PH (850) 438-0050  
FX (850) 432-8551

SURVEYORS  
KCI TECHNOLOGIES, INC.  
10401 HIGHLAND MANOR DRIVE, SUITE 120  
TAMPA, FLORIDA 33610  
PH (813) 740-2300

LANDSCAPE ARCHITECT  
CSA GROUP, INC.  
6300 PICCADILLY SQUARE DRIVE  
MOBILE, ALABAMA 36609  
PH (251) 344-4223  
FX (251) 344-4052

ARCHITECTURE  
BULLOCK TOE ASSOCIATES, INC.  
609 EAST CERVANTES STREET  
PENSACOLA, FL 32501  
PH (850) 438-5444  
FX (850) 432-8208



## ARCHITECT/ENGINEERS:



BES DESIGN/BUILD, LLC  
766 Middle St, Fairhope, AL 36532  
Phone: 251.990.5778 Fax: 251.990.3716

## Drawing Title

UTILITY PLAN

Approved Project Director

## Project Title

PANAMA CITY  
JOINT OUTPATIENT CLINIC  
VA GULF COAST HEALTH CARE

## Location

PANAMA CITY, FLORIDA

## Date

MARCH 2012

## Checked

KCH

## Drawn

LPR

## Project Number

520-326

## Building Number

-

## Drawing Number

CU101

Dwg 12 of 21

## FINAL SUBMISSION

Office of  
Construction  
and Facilities  
Management

