

A

B

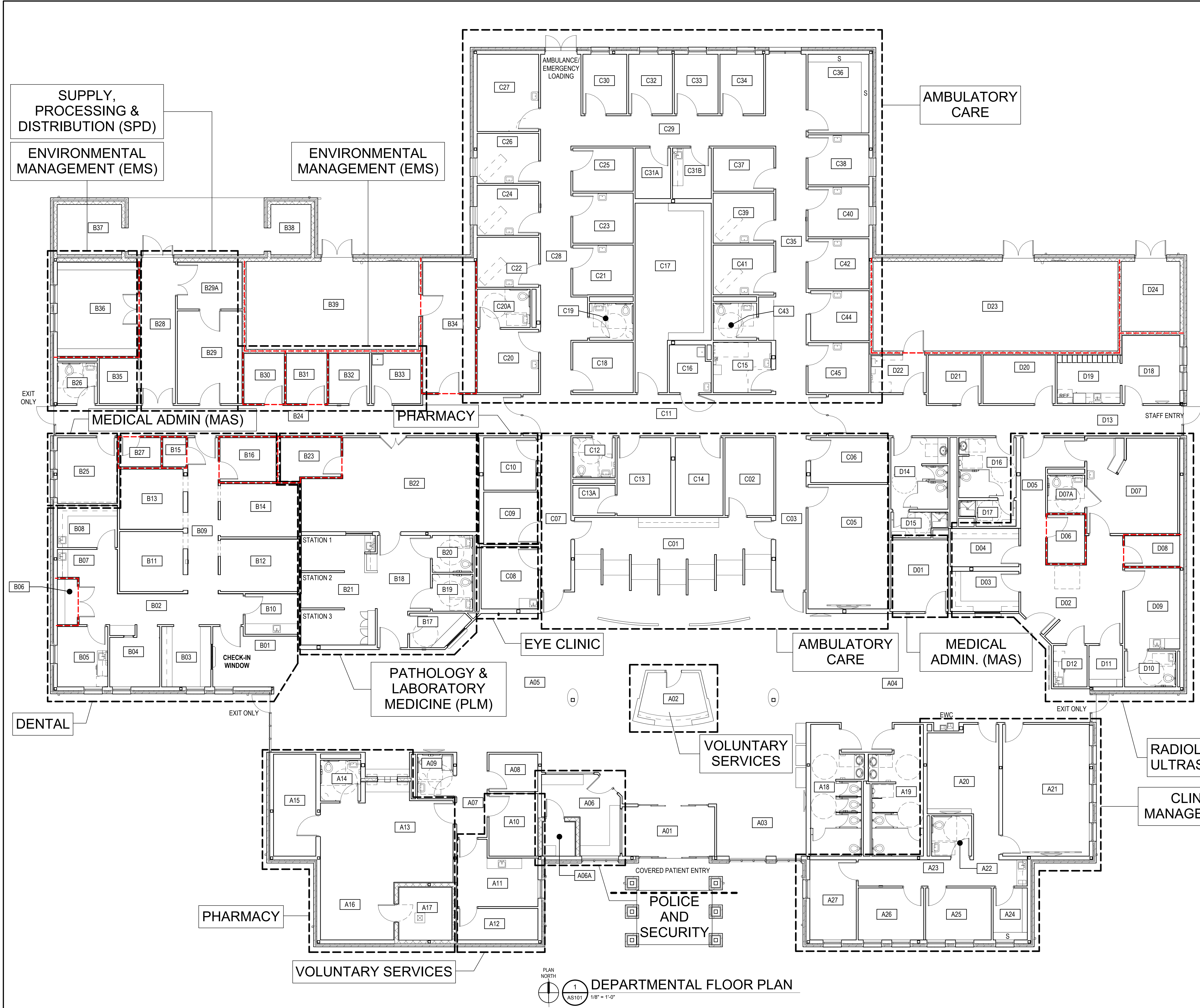
C

D

E

F

D:\\_MAC2012\roberta13271-01\_BES\_JOPC\_walls.rvt  
3/26/2012 10:03:32 AM  
one eighth inch = one foot  
one quarter inch = one foot  
three eighths inch = one foot  
one half inch = one foot  
one inch = one foot  
three quarters inch = one foot  
one inch = one foot  
one and one half inches = one foot  
two inches = one foot  
three inches = one foot



ROOM NAME LEGEND DEPARTMENTAL PLAN		ROOM NAME LEGEND DEPARTMENTAL PLAN	
ROOM NAME	RM#	ROOM NAME	RM#
VESTIBULE	A01	CORR.	C03
VOL. INFO DESK	A02	MULTI PURPOSE CLASS/CONF.	C05
WAITING AREA "C"	A03	SOCIAL WORKER	C06
WAITING AREA "B"	A04	CORR.	C07
WAITING AREA "A"	A05	VISION SCREENING (TELERETINAL)	C08
OPER. ROOM	A06	FEE PHARMACIST	C09
SECURE STG. VAULT	A06A	CLINICAL PHARMACIST	C10
CORR.	A07	CORR.	C11
COMM.	A08	ST. TLT.	C12
FAM. TLT	A09	CCHT NURSE/ PSA	C13
VOL. SERV. OFF.	A10	CCHT PSA STG	C13A
VOL. MP ROOM	A11	TELEHEALTH	C14
STG.	A12	EKG	C15
RECEP. WKST.	A13	S. UTILITY RM	C16
TLT. UNISEX	A14	MED. EQUIP./CRASH CART STG.	C17
LOW VOLUME BULK STOR.	A15	DIETITIAN	C18
STOR. / DISPENSING	A16	PT TLT	C19
SECURE STOR. VAULT	A17	GYN. EXAM RM	C20
WOMEN RR	A18	PT. TLT	C20A
MEN'S RR	A19	EXAM RM	C21
OFFICE, SECT. & WAITING	A20	EXAM RM	C22
CONFERENCE ROOM	A21	EXAM RM	C23
ST. TLT	A22	EXAM RM	C24
CORR.	A23	CASE MGR. OFF.	C25
SUPP. EQUIP.	A24	EXAM RM	C26
ADMIN. OFF.	A25	MULTIPURPOSE PROC. RM	C27
NURSE MGR.	A26	CORR.	C28
CHIEF MED. OFFICE	A27	CORR.	C29
WAITING	B01	CASE MGR. OFF.	C30
CORR.	B02	CLEAN UTIL.	C31A
RECEP. / CHECK-IN FILES	B03	MED. RM	C31B
X-RAY	B04	CASE MGR. OFF.	C32
OFF / MED. ROOM	B05	CASE MGR. OFF.	C33
BULK STG.	B06	CASE MGR. OFF.	C34
PROS. PREP.	B07	CORR.	C35
PROS. LAB	B08	LINEN, STRETCHER, MEDICAL EQUIP. STOR.	C36
CORR.	B09	CASE MGR. OFF.	C37
STER. INST. STG.	B10	EXAM RM	C38
HYGIENE OP.	B11	EXAM RM	C39
GEN. TREATMENT OP.	B12	EXAM RM	C40
HYGIENE OP.	B13	EXAM RM	C41
GEN. TREATMENT OP.	B14	EXAM RM	C42
SOIL UTIL.	B15	PT TLT	C43
CLEAN STG.	B16	EXAM RM	C44
TECH/CHECK-IN	B17	EXAM RM	C45
CORR.	B18	R.O.I.	D01
LAB: TLT	B19	CIRCULATION	D02
LAB: TLT	B20	RECEP.	D03
BLOOD SPECIMEN COLL.	B21	TECHS	D04
CLINICAL LAB	B22	CORR.	D05
BULK STG.	B23	S. UTILITY	D06
CORR.	B24	RADIOLOGY	D07
AFGE OFFICE	B25	PT. TLT	D07A
ST. TLT	B26	CLEAN STG	D08
MECH.	B27	ULTRASOUND	D09
RECEIVING	B28	PT. TLT	D10
STOR / STERILE	B29	DRESS	D11
BULK STOR.	B29A	MED. RM	D12
STG. CLEAN LINEN CT	B30	CORR.	D13
STG. SOILED LINEN CT	B31	WOMEN'S ST. TLT	D14
INFECT. / HAZ. WASTE	B32	SHOWER	D15
HAC	B33	MEN'S ST. TLT	D16
FMS	B34	SHOWER	D17
FMS WORK SPACE	B35	BREAK RM.	D18
STG. EMS/ LARGE EQUIP.	B36	LOCKER/KIT.	D19
MEDICAL GAS STG.	B37	COMM. RM	D20
RECYCLE RM	B38	ELEC. SYS.	D21
MECHANICAL ROOM	B39	HAC	D22
MAS: CENTRAL RECEPTION	C01	MECHANICAL	D23
LEAD CLERK/ WORKROOM	C02	ELECTRICAL	D24
		Grand total: 140	

A

B

C

D

E

F

PLAN NORTH  
1 AS101 1/8" = 1'-0"  
DEPARTMENTAL FLOOR PLAN

0 4' 8' 16'  
SCALE: 1/8" = 1'-0"

FINAL SUBMISSION

CONSULTANTS:

Civil:

KENNETH HORNE & ASSOCIATES  
7201 NORTH 9TH AVENUE, STE. 6  
PENSACOLA, FLORIDA 32504  
PH: (850) 471-9095  
FX: (850) 471-0553

COMMINS:

SCHMIDT CONSULTING GROUP, INC.  
139 EAST GOVERNMENT STREET  
PENSACOLA, FLORIDA 32202  
PH: (850) 438-0050  
FX: (850) 432-8611

LANDSCAPE ARCHITECT:

CSA GROUP, INC.  
6300 PICCADILLY SQUARE DRIVE  
MOBILE, ALABAMA 36689  
PH: (251) 344-4023  
FX: (251) 344-4052

ARCHITECTURE:

BULLOCK TICE ASSOCIATES, INC.  
909 EAST CERVANTES STREET  
PENSACOLA, FL. 32501  
PH: (850) 434-5444  
FX: (850) 432-8208

ARCHITECT/ENGINEERS:

BES DESIGN/BUILD, LLC  
766 Middle St, Fairhope, AL 36532  
Phone: 251.990.5778 Fax: 251.990.3716

Drawing Title

DEPARTMENTAL FLOOR PLAN

Approved: Project Director

Project Title

PANAMA CITY  
JOINT OUTPATIENT CLINIC  
VA GULF COAST HEALTH CARE

Location

PANAMA CITY, FLORIDA

Date

MARCH 2012

Checked

BM

Drawn

TWWMF

Project Number

520-326

Building Number

-

Drawing Number

AS101

Dwg. 2 of 42

Office of Construction and Facilities Management

VA FORM 08-6231 1 2 3 4 5 6 7 8 9