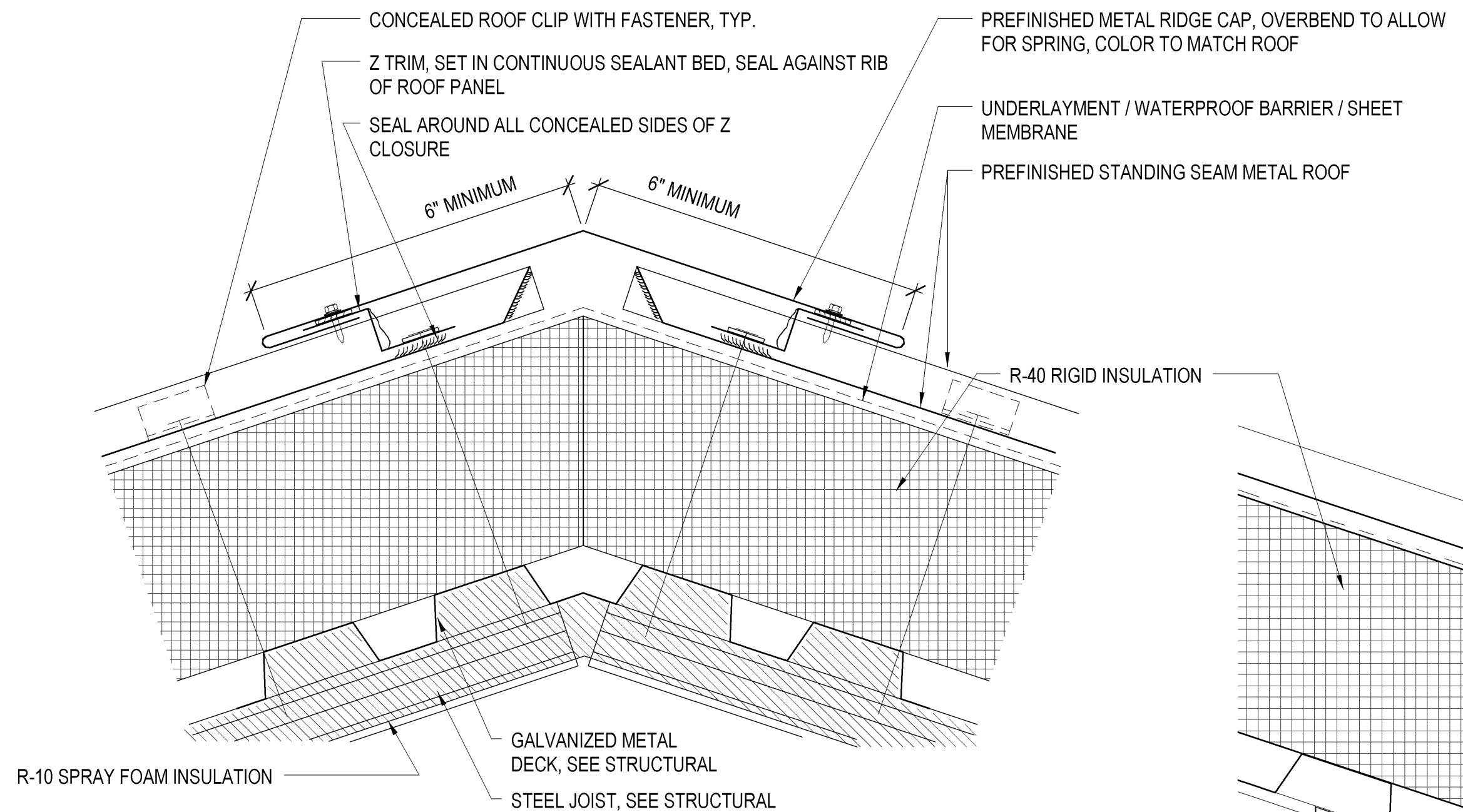
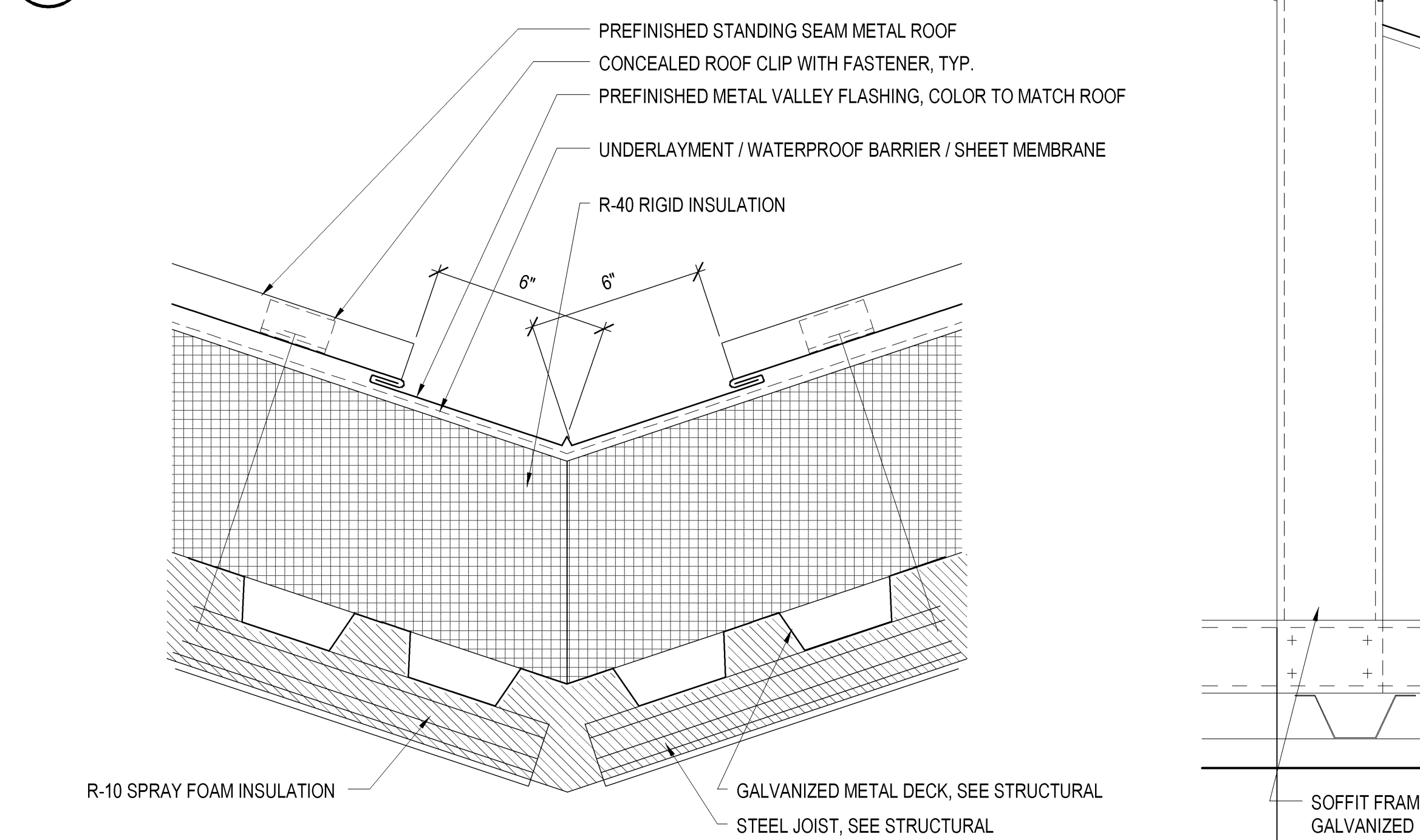


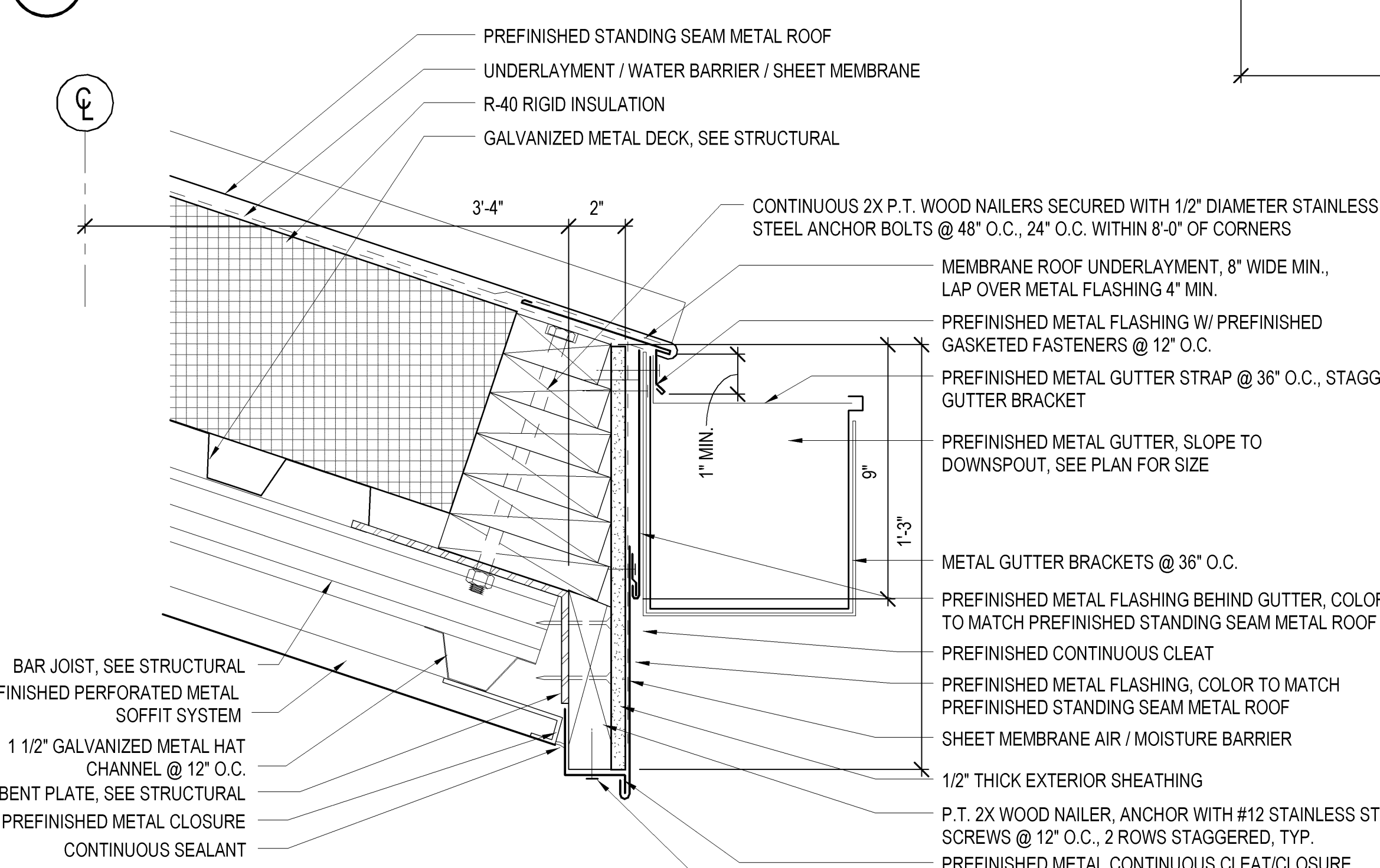
3/26/2012 10:01:47 AM
D:_BAC2012\Project\12711-01_BES_JOPC_walls.mxd
one eighth inch = one foot
one quarter inch = one foot
one half inch = one foot
three eighths inch = one foot
one inch = one foot
one and one half inches = one foot
two inches = one foot
three inches = one foot
four inches = one foot
five inches = one foot
six inches = one foot
seven inches = one foot
eight inches = one foot
nine inches = one foot
ten inches = one foot
eleven inches = one foot
twelve inches = one foot
thirteen inches = one foot
fourteen inches = one foot
fifteen inches = one foot
sixteen inches = one foot
seventeen inches = one foot
eighteen inches = one foot
nineteen inches = one foot
twenty inches = one foot
twenty one inches = one foot
twenty two inches = one foot
twenty three inches = one foot
twenty four inches = one foot
twenty five inches = one foot
twenty six inches = one foot
twenty seven inches = one foot
twenty eight inches = one foot
twenty nine inches = one foot
thirty inches = one foot
thirty one inches = one foot
thirty two inches = one foot
thirty three inches = one foot
thirty four inches = one foot
thirty five inches = one foot
thirty six inches = one foot
thirty seven inches = one foot
thirty eight inches = one foot
thirty nine inches = one foot
forty inches = one foot
forty one inches = one foot
forty two inches = one foot
forty three inches = one foot
forty four inches = one foot
forty five inches = one foot
forty six inches = one foot
forty seven inches = one foot
forty eight inches = one foot
forty nine inches = one foot
fifty inches = one foot
fifty one inches = one foot
fifty two inches = one foot
fifty three inches = one foot
fifty four inches = one foot
fifty five inches = one foot
fifty six inches = one foot
fifty seven inches = one foot
fifty eight inches = one foot
fifty nine inches = one foot
sixty inches = one foot
sixty one inches = one foot
sixty two inches = one foot
sixty three inches = one foot
sixty four inches = one foot
sixty five inches = one foot
sixty six inches = one foot
sixty seven inches = one foot
sixty eight inches = one foot
sixty nine inches = one foot
seventy inches = one foot
seventy one inches = one foot
seventy two inches = one foot
seventy three inches = one foot
seventy four inches = one foot
seventy five inches = one foot
seventy six inches = one foot
seventy seven inches = one foot
seventy eight inches = one foot
seventy nine inches = one foot
eighty inches = one foot
eighty one inches = one foot
eighty two inches = one foot
eighty three inches = one foot
eighty four inches = one foot
eighty five inches = one foot
eighty six inches = one foot
eighty seven inches = one foot
eighty eight inches = one foot
eighty nine inches = one foot
ninety inches = one foot
ninety one inches = one foot
ninety two inches = one foot
ninety three inches = one foot
ninety four inches = one foot
ninety five inches = one foot
ninety six inches = one foot
ninety seven inches = one foot
ninety eight inches = one foot
ninety nine inches = one foot
one hundred inches = one foot



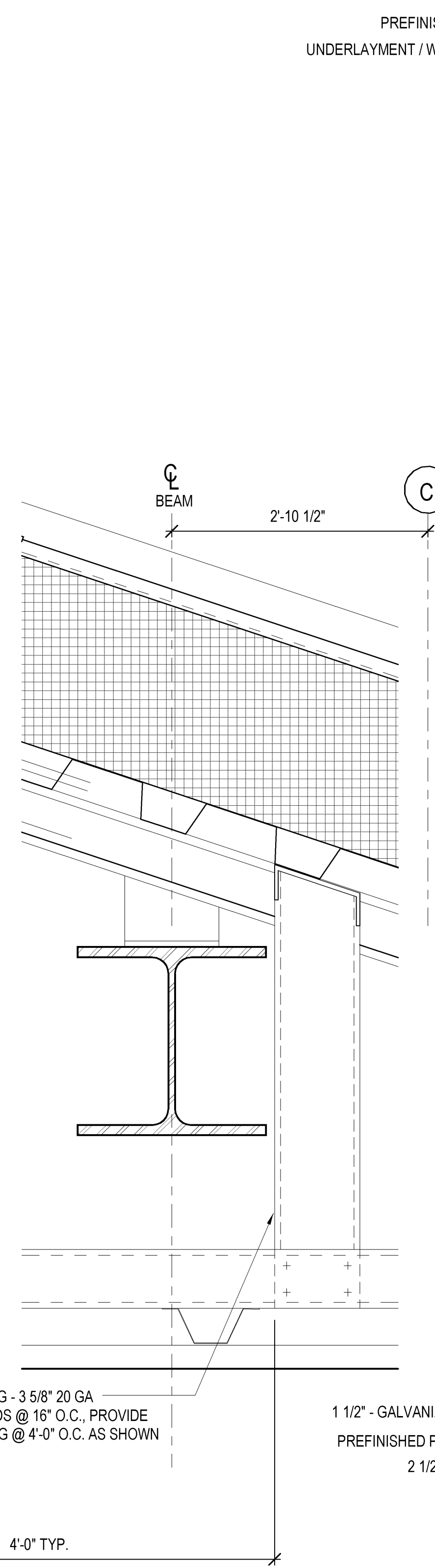
1 RIDGE DETAIL
AS142 3" = 1'-0"



2 VALLEY DETAIL
AS142 3" = 1'-0"

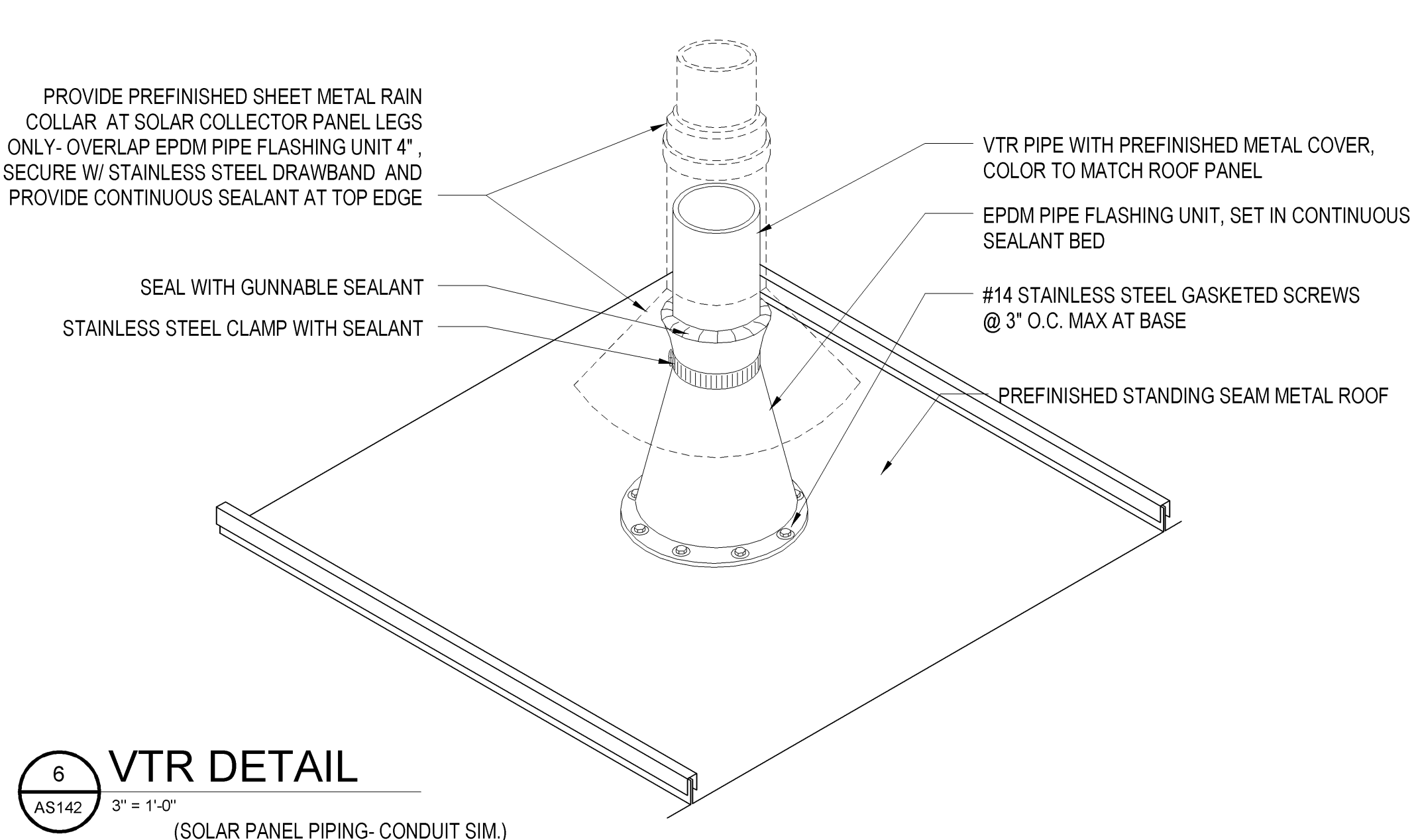


3 ROOF EDGE/GUTTER DETAIL
AS142 3" = 1'-0"



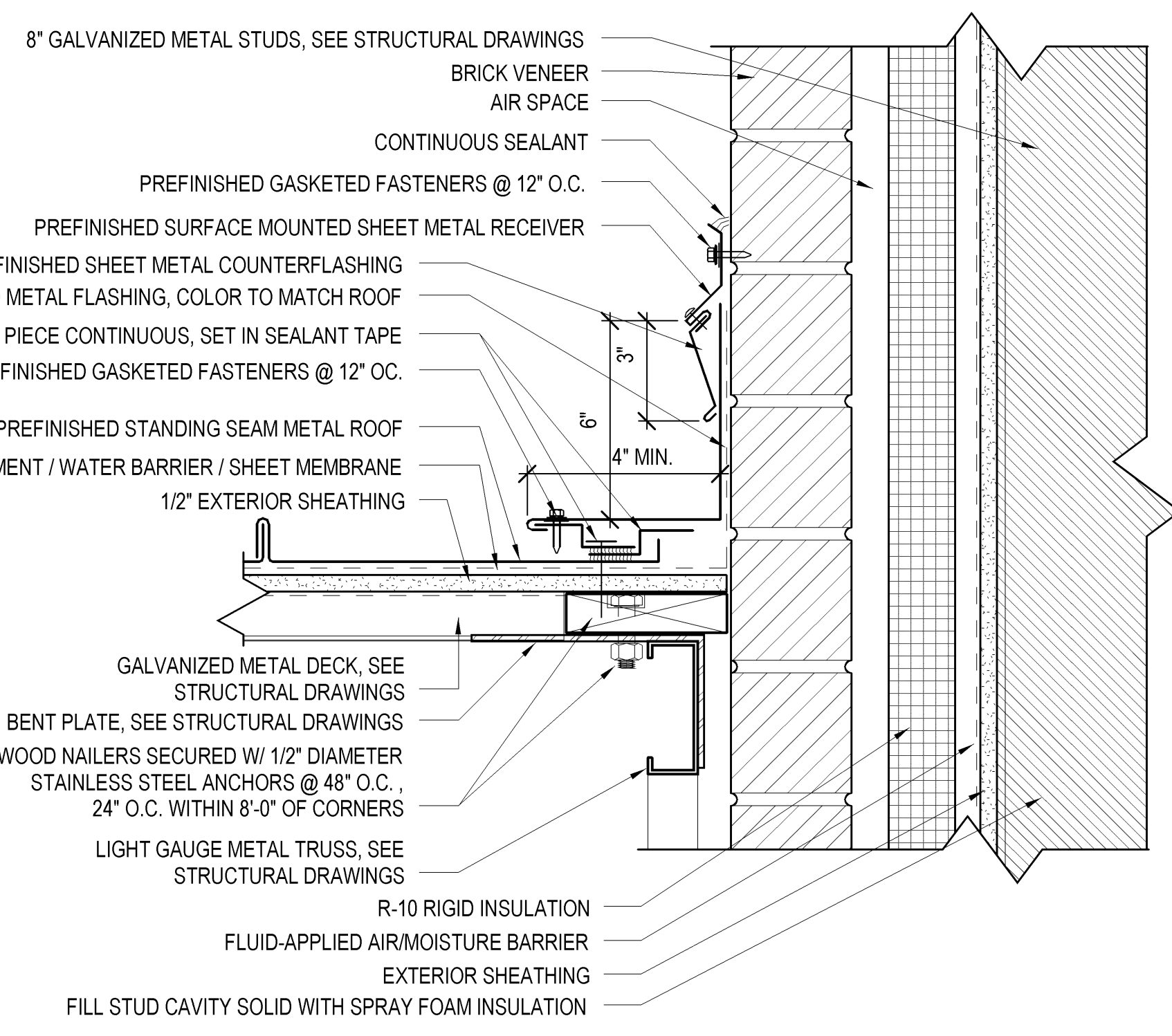
4 GABLE RAKE EDGE DETAIL
AS142 3" = 1'-0"

5 ROOF EDGE/GUTTER DETAIL AT SERVICE ENTRY
AS142 3" = 1'-0"

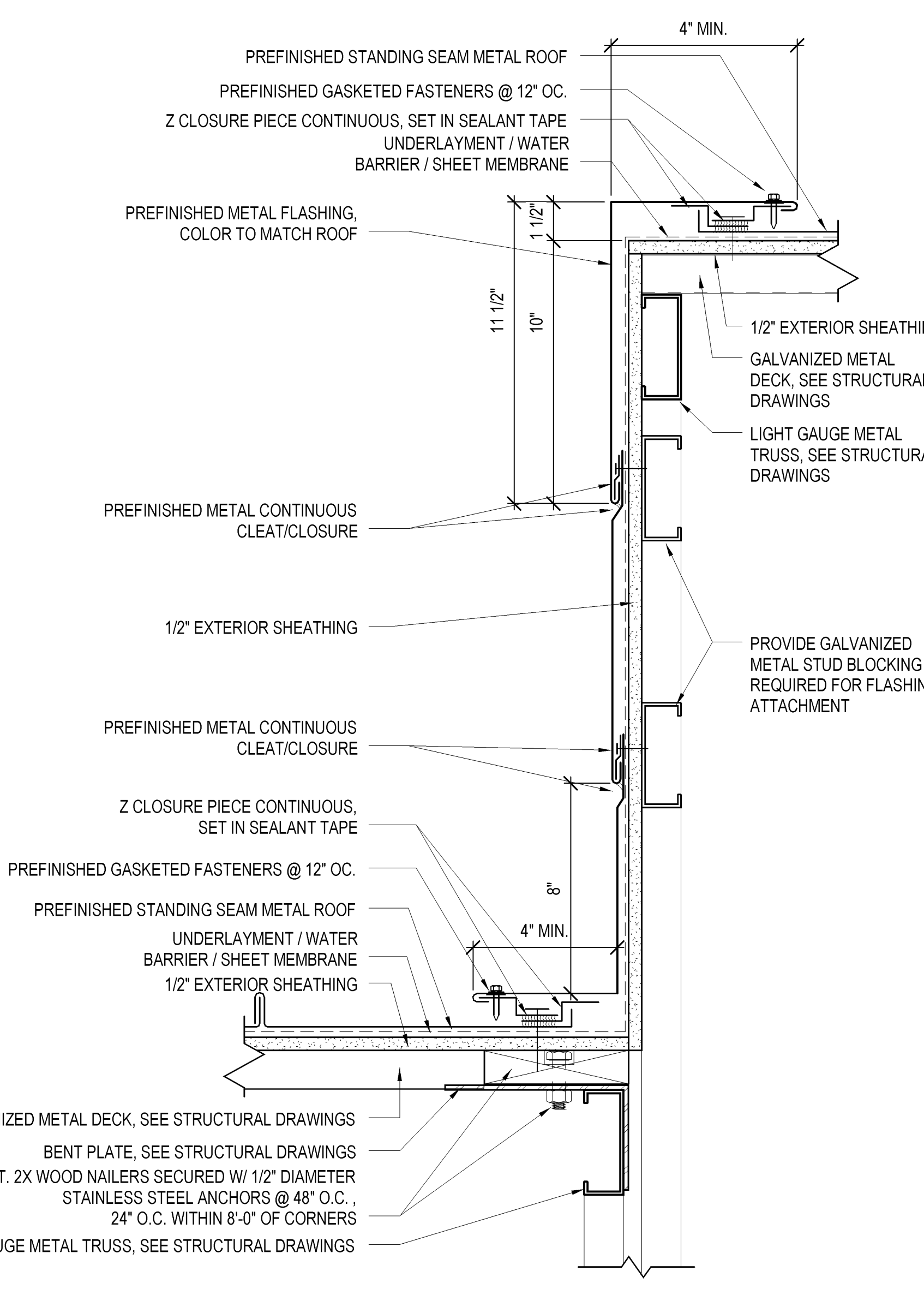


6 VTR DETAIL
AS142 3" = 1'-0"
(SOLAR PANEL PIPING- CONDUIT SIM.)

ROOF DETAIL NOTES
1. SEE STRUCTURAL DRAWINGS FOR GAUGE OF GALVANIZED METAL SOFFIT FRAMING.



7 COVERED WALK RAKE AT WALL
AS142 3" = 1'-0"



8 COVERED WALK EXPOSED RAKE
AS142 3" = 1'-0"

0 2" 4" 8"
SCALE: 3" = 1'-0"

FINAL SUBMISSION

CONSULTANTS:			ARCHITECT/ENGINEERS:			Drawing Title ROOF DETAILS		Project Title PANAMA CITY JOINT OUTPATIENT CLINIC VA GULF COAST HEALTH CARE		Project Number 520-326		Office of Construction and Facilities Management 	
CIVIL: KENNETH HORNIE & ASSOCIATES 7201 NORTH 9TH AVENUE, STE. 6 PENSACOLA, FLORIDA 32504 PH: (850) 471-9095 FX: (850) 471-9093			COMMERCIAL: SCHMIDT CONSULTING GROUP, INC. 139 EAST GOVERNMENT STREET PENSACOLA, FLORIDA 32502 PH: (850) 438-0050 FX: (850) 432-8651			SURVEYORS: KCI TECHNOLOGIES, INC. 10401 HIGHLAND MANOR DRIVE, SUITE 120 TAMPA, FLORIDA 33610 PH: (813) 740-2300		Location PANAMA CITY, FLORIDA		Drawing Number AS142			
LANDSCAPE ARCHITECT: C&K GROUP, INC. 6300 PICCADILLY SQUARE DRIVE MOBILE, ALABAMA 36689 PH: (251) 344-4023 FX: (251) 344-4052			ARCHITECTURE: BULLOCK TICE ASSOCIATES, INC. 908 EAST CERVANTES STREET PENSACOLA, FL. 32501 PH: (850) 434-5444 FX: (850) 432-6208			BES DESIGN/BUILD, LLC 766 Middle St, Fairhope, AL 36532 Phone: 251.990.5778 Fax: 251.990.3716		Date MARCH 2012		Checked BM			Drawn TWMF
Revisions:										Dwg. 12 of 42			