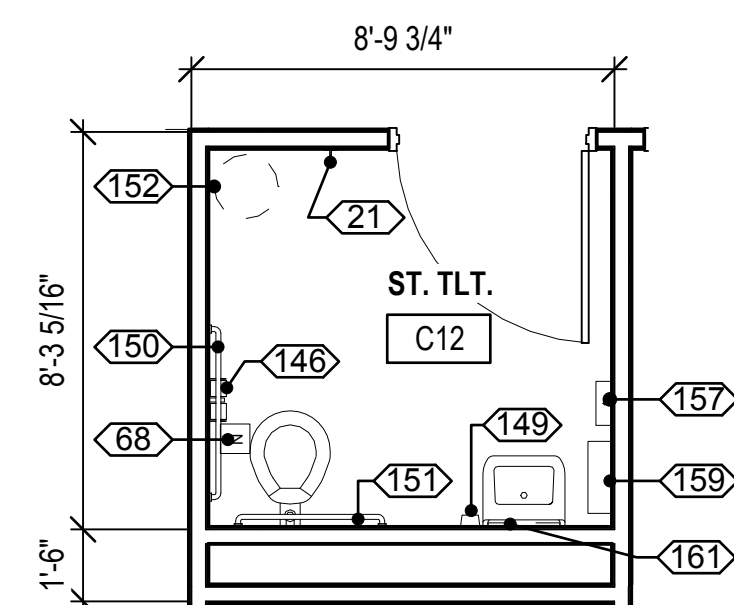
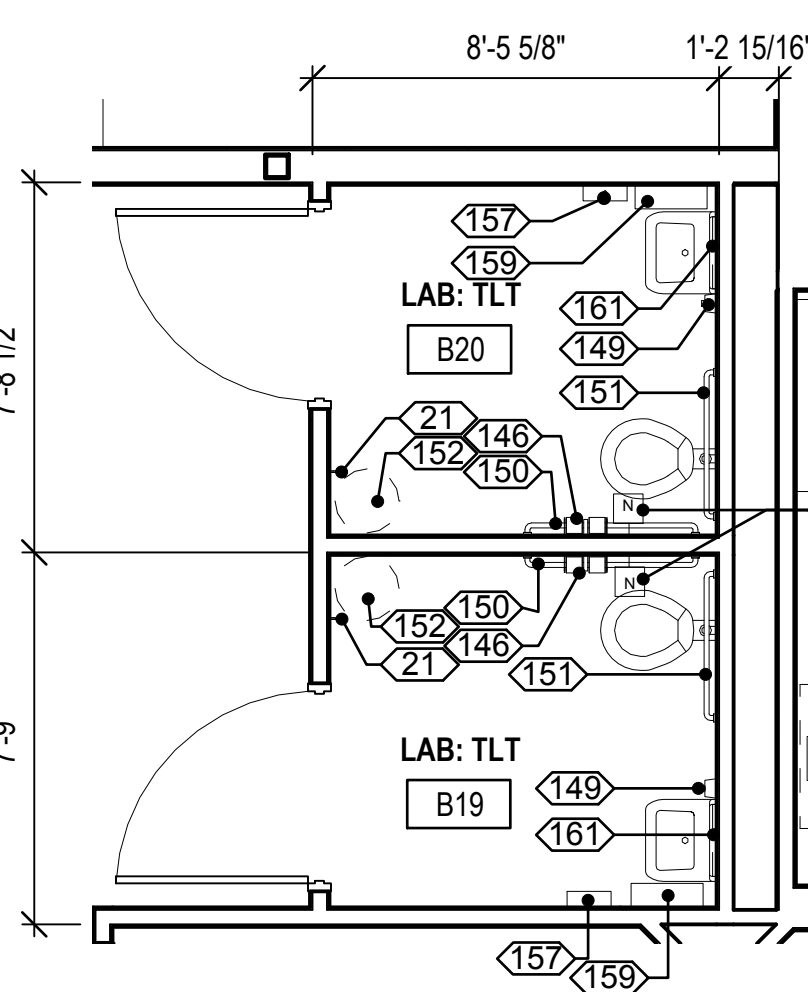


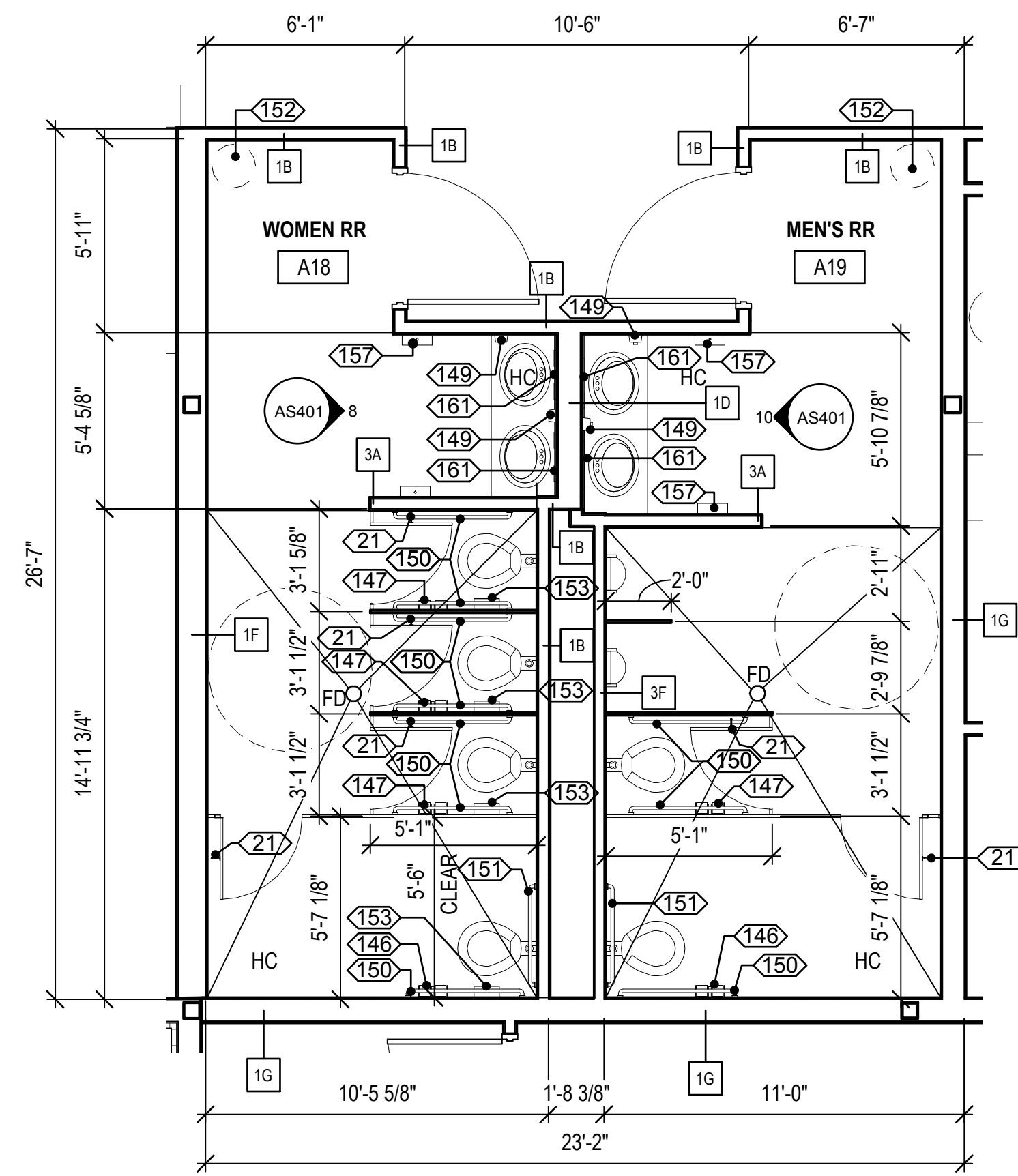
1 TYPICAL PATIENT TOILET
AS401 1/4" = 1'-0"



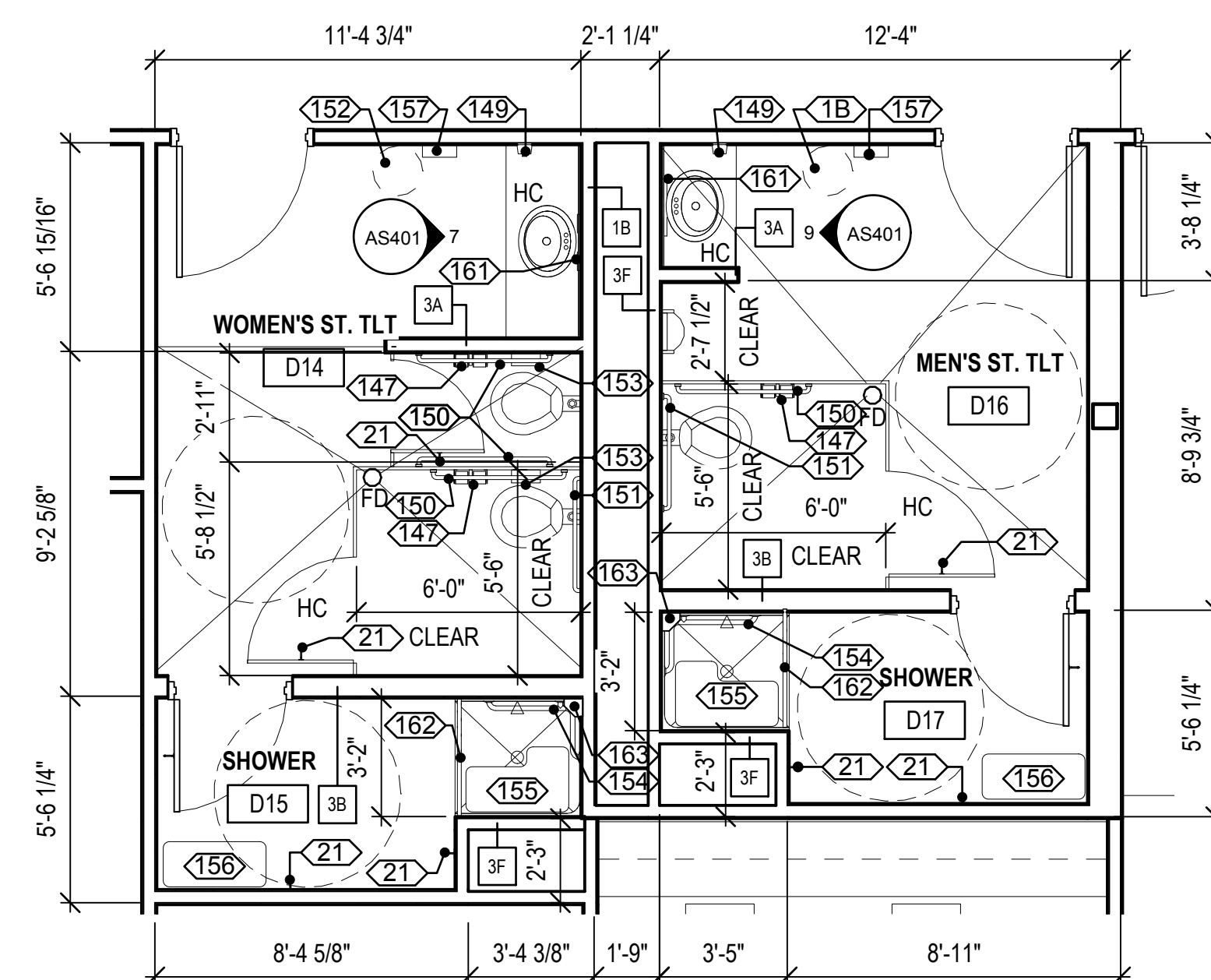
2 TYPICAL STAFF TOILET
AS401 1/4" = 1'-0"



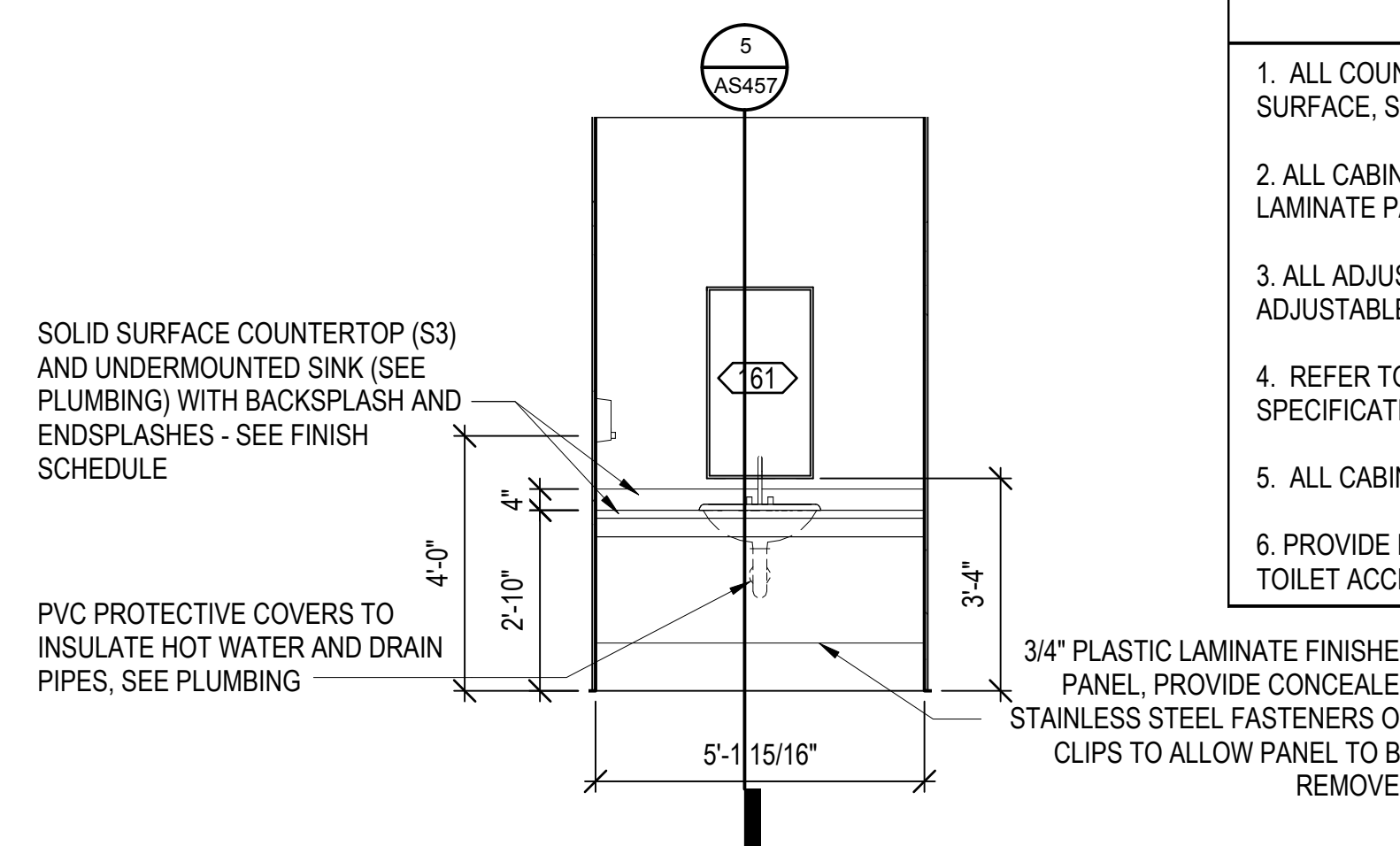
 SPECIMEN COLLECTION TOILETS



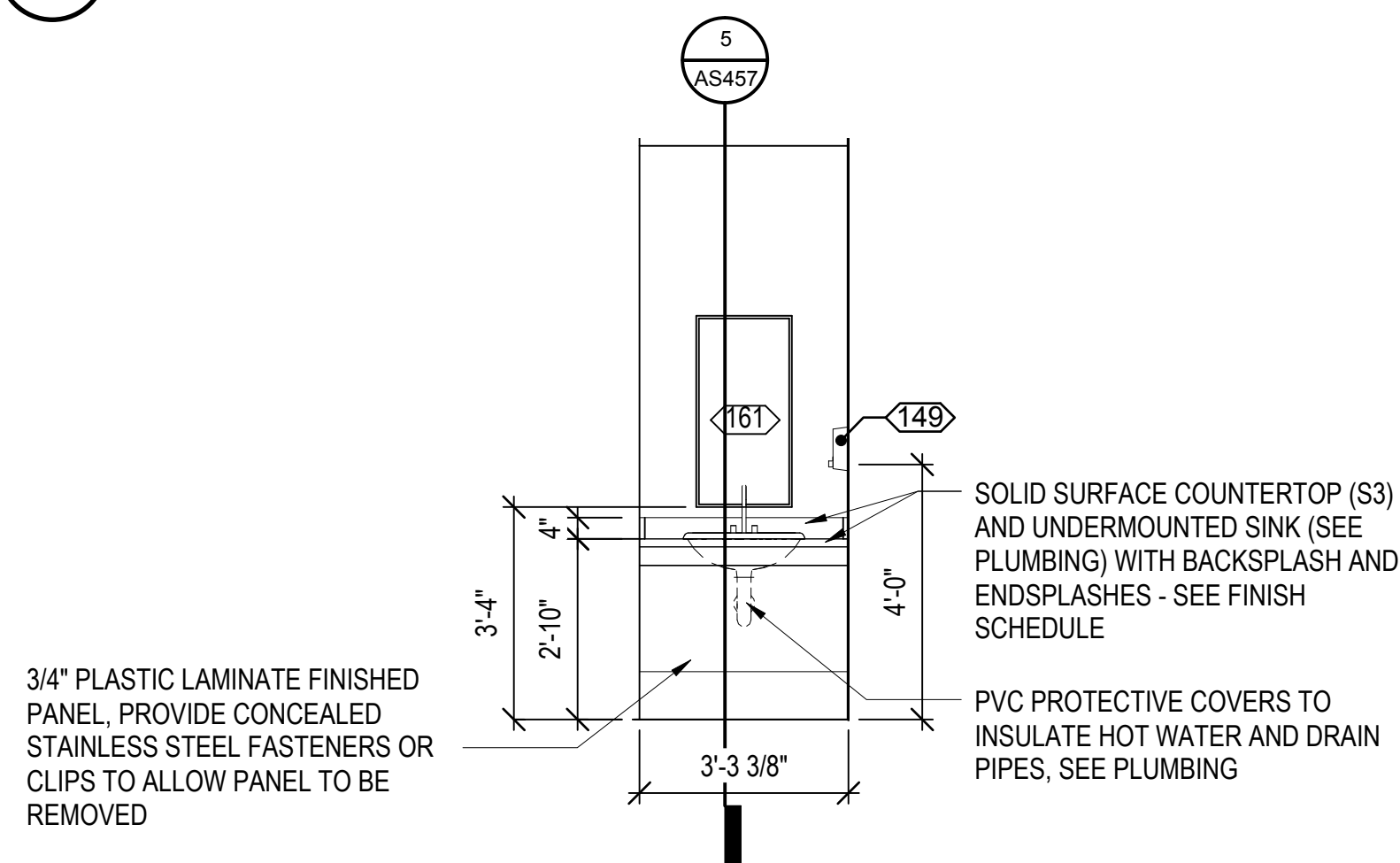
4 ENLARGED PUBLIC TOILET PLAN
AS401 1/4" = 1'-0"



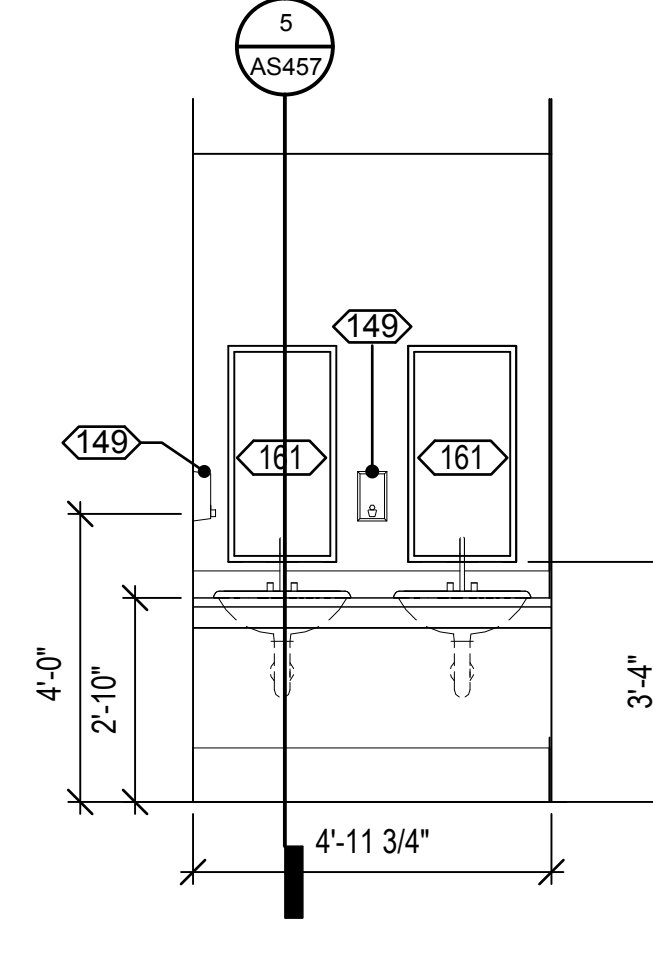
5 ENLARGED STAFF TOILET PLAN WITH SHOWERS
AS401 1/4" = 1'-0"



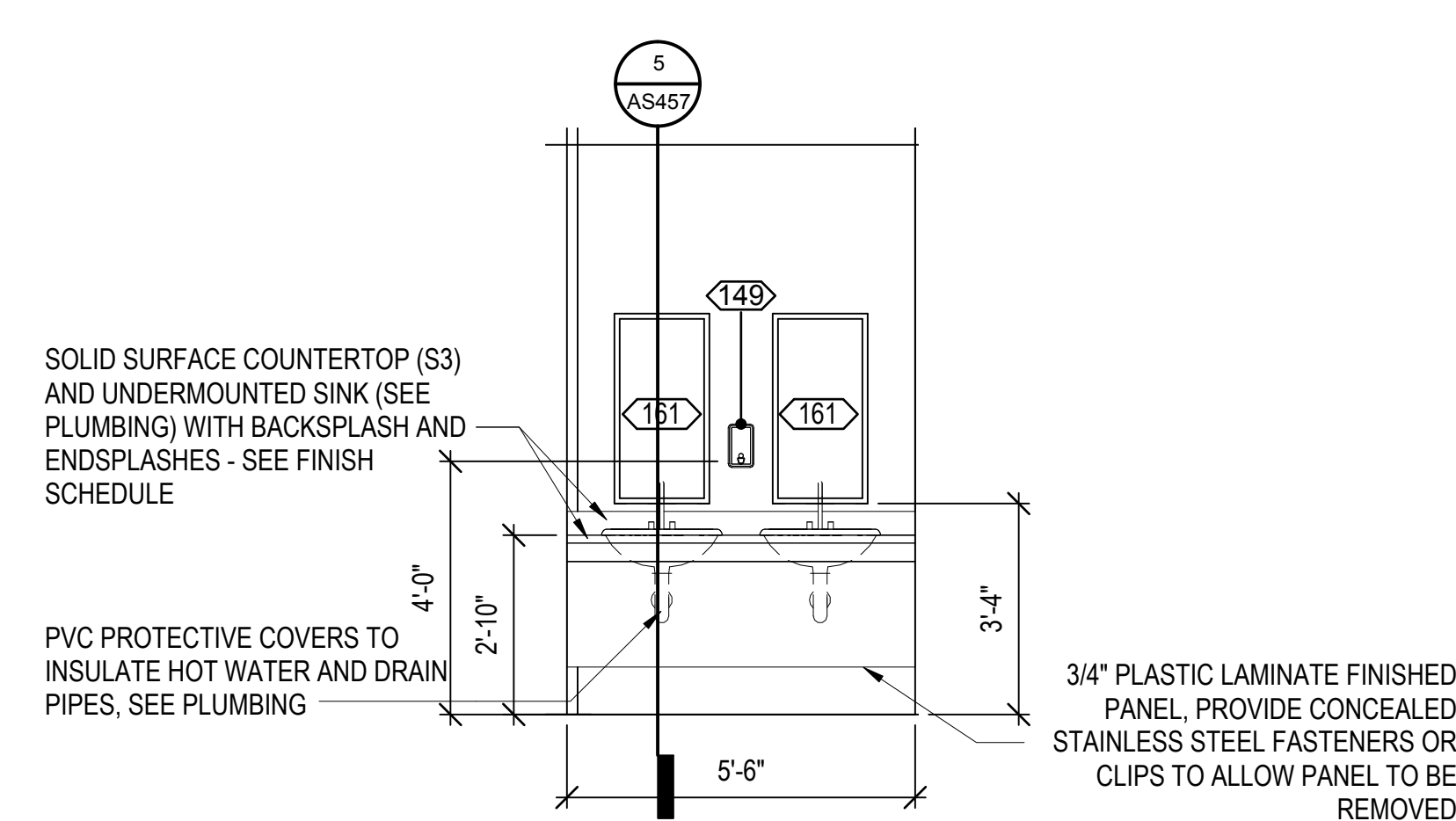
7 CASEWORK ELEV. - WOMEN'S STAFF RESTROOM
AS401 3/8" = 1'-0"



9 CASEWORK ELEV. - MEN'S STAFF RESTROOM
AS401 3/8" = 1'-0"



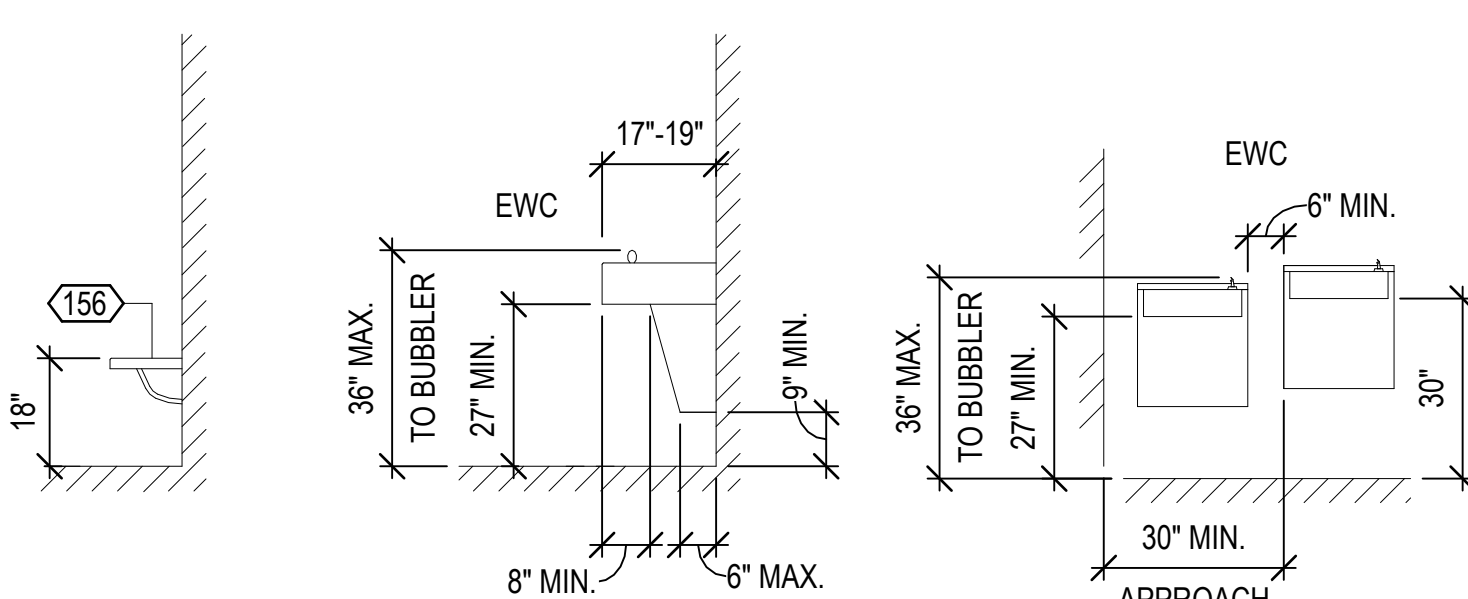
8 CASEWORK ELEV. - WOMENS PUBLIC RESTROOM
AS401 3/8" = 1'-0"



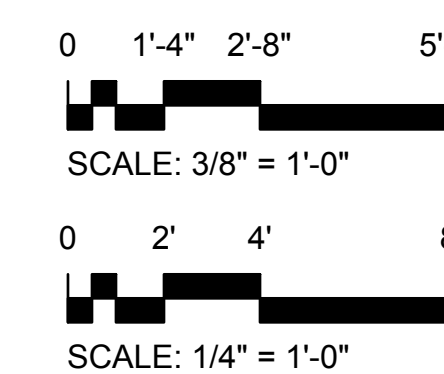
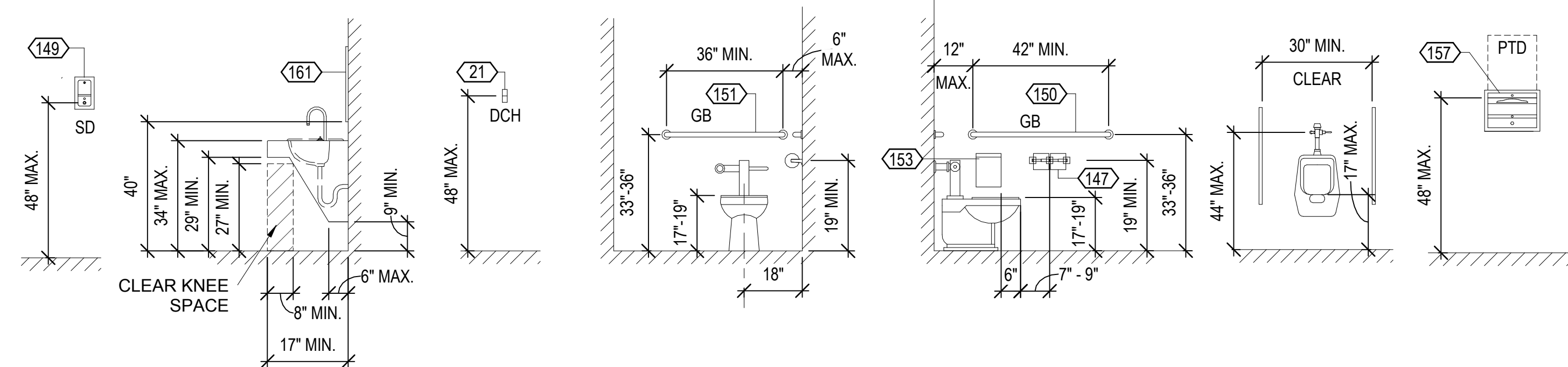
10 CASEWORK ELEV. - MEN'S PUBLIC RESTROOM
AS401 3/8" = 1'-0"

ACCESSORY SCHEDULE					
MARK	ITEM/DESCRIPTION	ABBREV.	ACQ/IN STALL	REMARKS	
21	DOUBLE COAT HOOK (CLOTHES HOOK)	DCH	CC	SEE 6/A/SA401	
68	NURSE CALL, REFER TO TN DRAWINGS	--	CC	REFER TO TN DRAWINGS	
146	TOILET TISSUE DISPENSER (DOUBLE ROLL)	TTD	CC	SEE 6/A/SA401	
147	TOILET TISSUE DISPENSER (DOUBLE ROLL)	TTD	CC	SEE 6/A/SA401	
149	SOAP DISPENSER (WALL MOUNTED)	SD	VV	SEE 6/A/SA401	
150	GRAB BAR (42" LONG)	GB1	CC	SEE 6/A/SA401	
151	GRAB BAR (36" LONG)	GB2	CC	SEE 6/A/SA401	
152	TRASH CAN	TC	VV	--	
153	SANITARY NAPKIN DISPOSAL	SND	CC	SEE 6/A/SA401	
154	SHOWER GRAB BAR (L SHAPED)	SCB	CC	SEE 6/A/SA401	
155	SHOWER FOLDING SEAT	SFS	CC	SEE 6/A/SA401	
156	FOLDING SEAT	SCS	CC	SEE 6/A/SA401	
157	PAPER TOWEL DISPENSER	PTD	VV	SEE 6/A/SA401	
159	METAL SHELF (18" X 8")	--	CC	MOUNT AT 48" MAX A.F.F.	
161	MIRROR (24" X 36")	MR1	CC	SEE 6/A/SA401	
162	SHOWER CURTAIN AND ROD	SCR	CC	MOUNT AT 6'-2" A.F.F	
163	SOLID SURFACE CORNER SOAP DISH AND CORNER SHAMPOO SHELF	CS	CC	MOUNT AT 3'-0" AND 4'-0" A.F.F.	

GRAPHIC LEGEND			
Room name			
888A	ROOM NAME TAG	CC	CONTRACTOR FURNISHED AND INSTALLED
	WALL CONSTRUCTION, SEE PARTITION TYPES, SHEET AS-101	VC	VA FURNISHED, CONTRACTOR INSTALLED
A	AIR VALVE, SEE PLUMBING	VV	VA FURNISHED AND INSTALLED
O	OXYGEN VALVE, SEE PLUMBING		
16	PARTITION TYPE	VV (CF)	VA FURNISHED WITH CONSTRUCTION FUND\$
V	VACUUM VALVE, SEE PLUMBING		EQUIPMENT: SEE EQUIPMENT SCHEDULE
FD	FLOOR DRAIN		DENOTING EQUIPMENT TO BE PROVIDED
EMPO	EMERGENCY POWER OFF		AND INSTALLED BY THE CONSTRUCTION CONTRACT (CC) OR BY THE VA (VV) AS SCHEDULED
UR	UNDERCOUNTER REFRIGERATOR (VV)		FF&E FURNITURE (VV) (DESIGNED AND PROVIDED BY VA)
UF	UNDERCOUNTER FREEZER (VV)		
R/REF	REFRIGERATOR (VV)		
S	SHELVES (VV)		BUILT-IN/MODULAR CASEWORK (CC)
111	EQUIPMENT TAG, SEE AS402 FOR EQUIPMENT SCHEDULE		
HC	HANDICAPPED ACCESSIBLE		SINK, SEE PLUMBING



6 TYP MOUNTING HEIGHTS
AS401 3/8" = 1'-0"

[illegible]