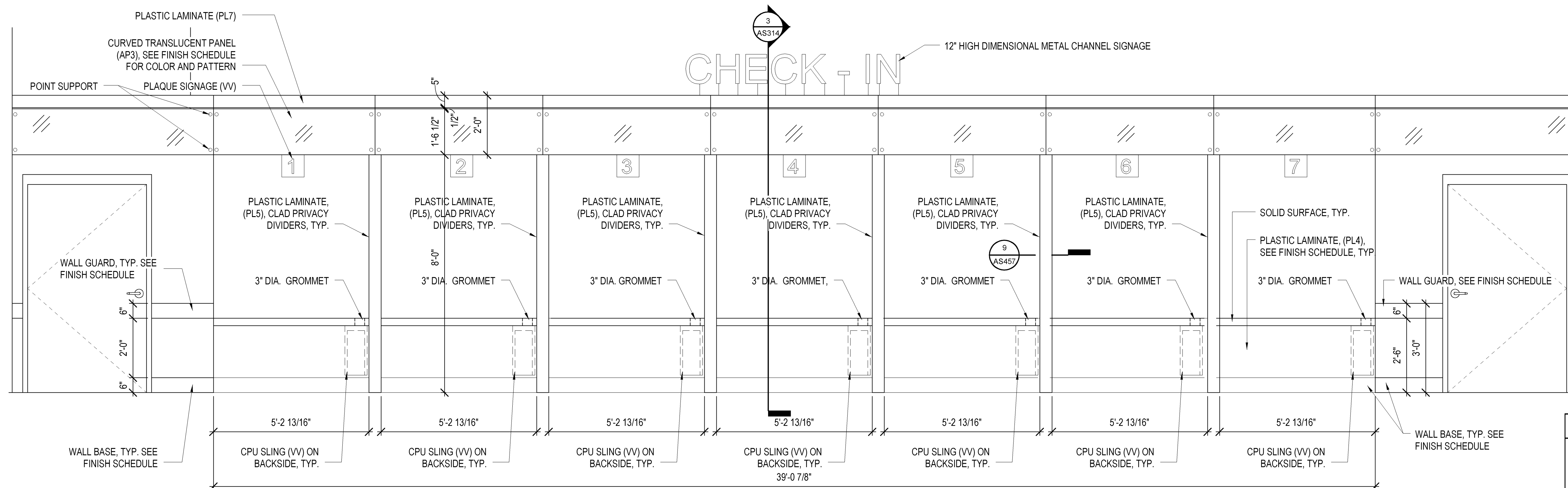
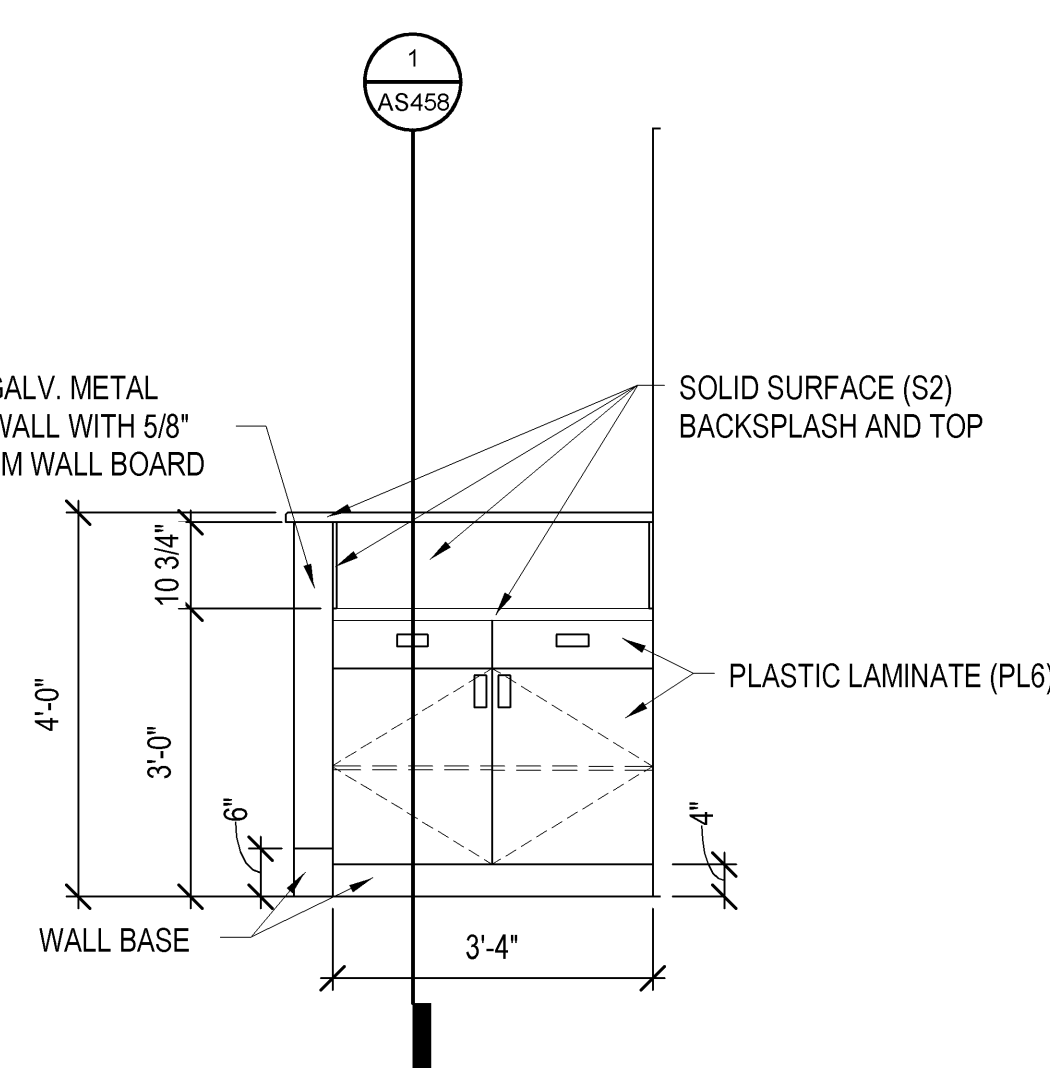


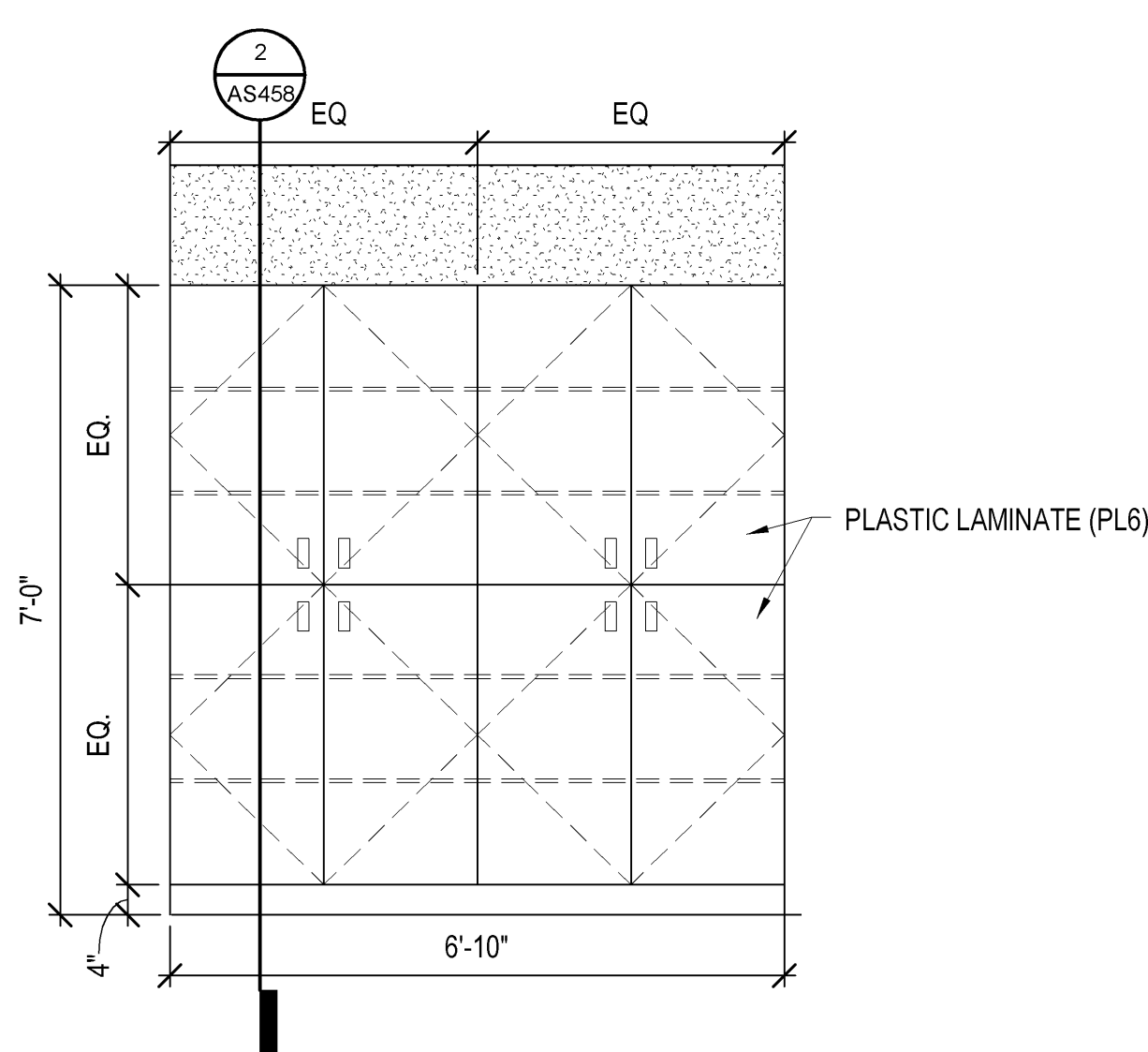
4 CASEWORK ELEV. 4- VOL. INFO DESK  
AS450 1/2" = 1'-0"



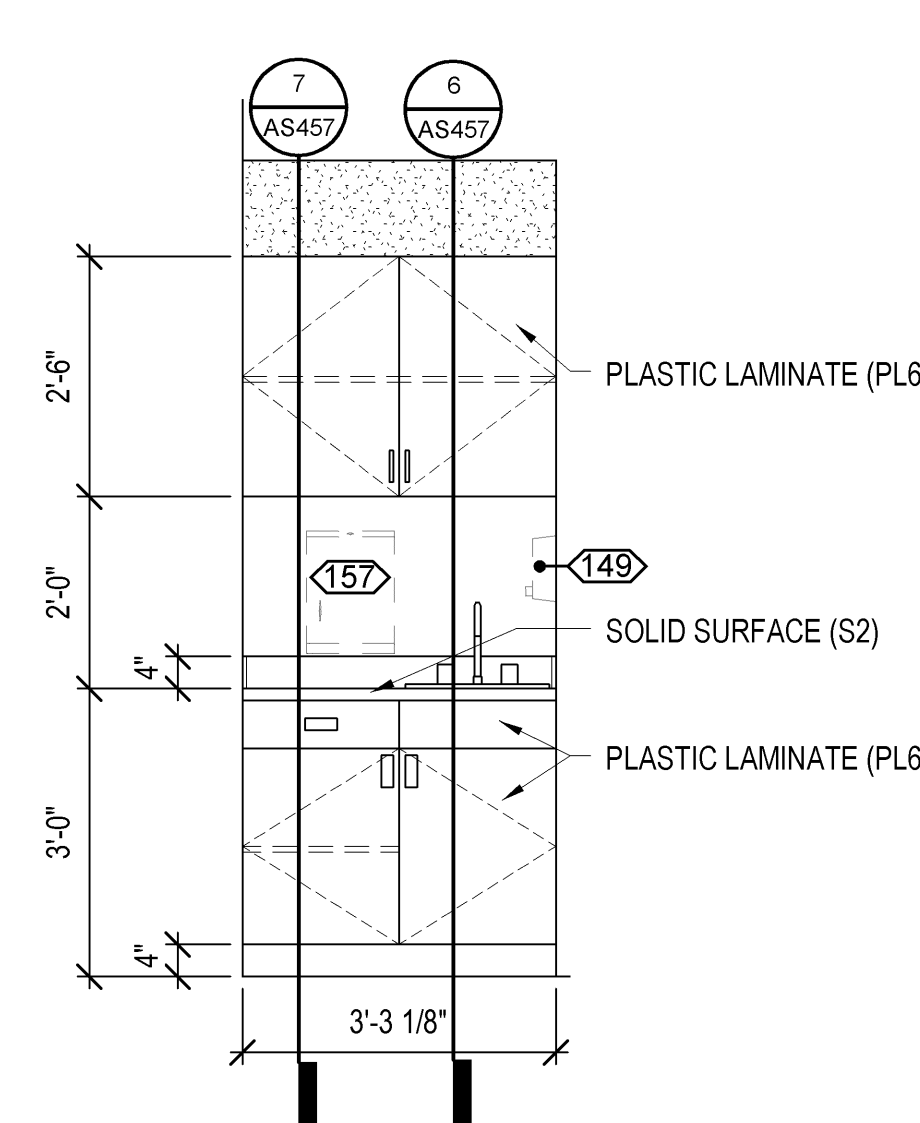
 **CASEWORK ELEV. - MAIN CHECK-IN**



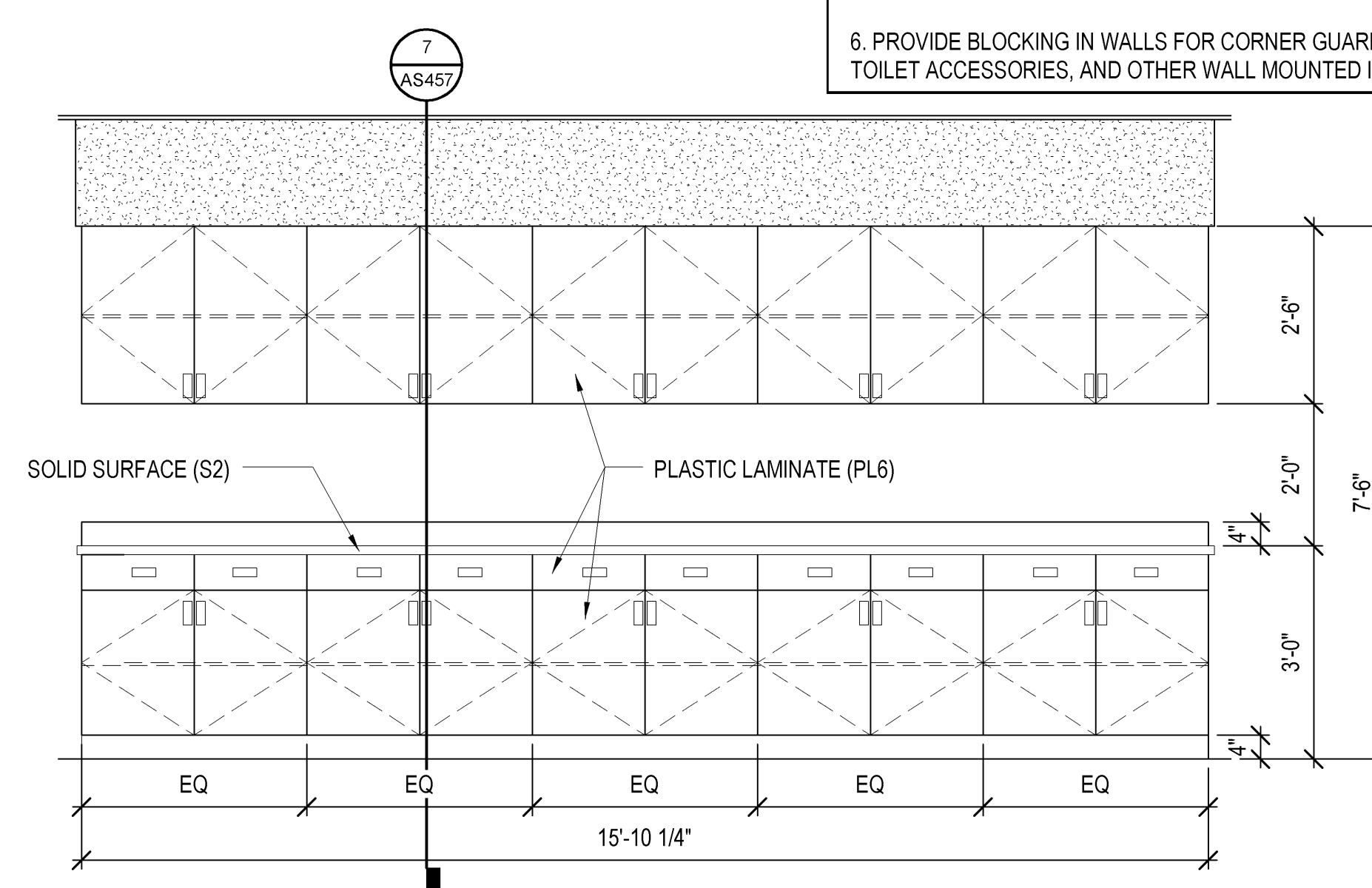
 CASEWORK ELEV. - BLOOD COL. A



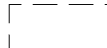
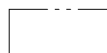
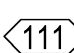
9 CASEWORK ELEV. - BLOOD COL. B  
AS450 1/2" = 1'-0"



10 CASEWORK ELEV. - BLOOD COL. C  
AS450 1/2" = 1'-0"

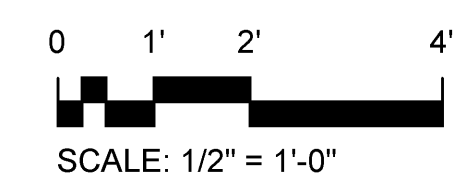


11 CASEWORK ELEV.- CENTRAL RECEPTION  
AS450 1/2" = 1'-0"

GRAPHIC LEGEND	
R	REFRIGERATOR (VV)
HC	HANDICAP ACCESSIBLE
VV	VA FURNISHED AND INSTALLED
CC	CONTRACTOR FURNISHED & INSTALLED
	EQUIPMENT: SEE EQUIPMENT SCHEDULE DENOTING EQUIPMENT TO BE PROVIDED AND INSTALLED BY THE CONSTRUCTION CONTRACT (CC) AND BY THE VA (VV)
	FF&E FURNITURE (VV)(DESIGNED AND PROVIDED BY VA)
	EQUIPMENT SYMBOL, SEE AS402 FOR EQUIPMENT SCHEDULE



## CASEWORK NOTES


1. ALL COUNTERTOPS AND BACKSPLASHES ARE TO BE SOLID SURFACE, SEE FINISH SCHEDULE FOR COLOR.
2. ALL CABINET BODIES, DOORS AND DRAWERS TO BE PLASTIC LAMINATE PANELS, SEE FINISH SCHEDULE FOR COLOR.
3. ALL ADJUSTABLE SHELVES TO BE PLASTIC LAMINATE ON ADJUSTABLE SHELF STANDARDS.
4. REFER TO SPEC SECTION 12 32 00 AND 06 61 16 FOR SPECIFICATIONS FOR BUILT-IN CASEWORK SHOWN ON THIS DRAWING.
5. ALL CABINET PULLS TO BE 3" RECESSED PULLS, U.N.O.
6. PROVIDE BLOCKING IN WALLS FOR CORNER GUARDS, TV BRACKETS, TOILET ACCESSORIES, AND OTHER WALL MOUNTED ITEMS.



FINAL SUBMISSION

[illegible]

	ARCHITECT/ENGINEERS:
	<div data-bbox="1365 1864 1561 1900">  </div> <div data-bbox="1584 1864 1834 1900"> <p>BES DESIGN/BUILD, LLC  766 Middle St. Fairhope, AL 36532  Phone: 251.990.5778 Fax: 251.990.3716</p> </div>

Drawing Title <b>CASEWORK ELEVATIONS</b>		Project Title <b>PANAMA CITY JOINT OUTPATIENT CLINIC VA GULF COAST HEALTH CARE</b>		Project Number <b>520-326</b>		<div>Office of Construction and Facilities Management</div> <div>  <b>Department of Veterans Affairs</b> </div>
Approved: Project Director		Location <b>PANAMA CITY, FLORIDA</b>		Building Number <b>-</b>		
		Date <b>MARCH 2012</b>		Drawing Number <b>AS450</b>  Dwg. 29 of 42		
		Checked <b>BM</b>		Drawn <b>TWIMF</b>		