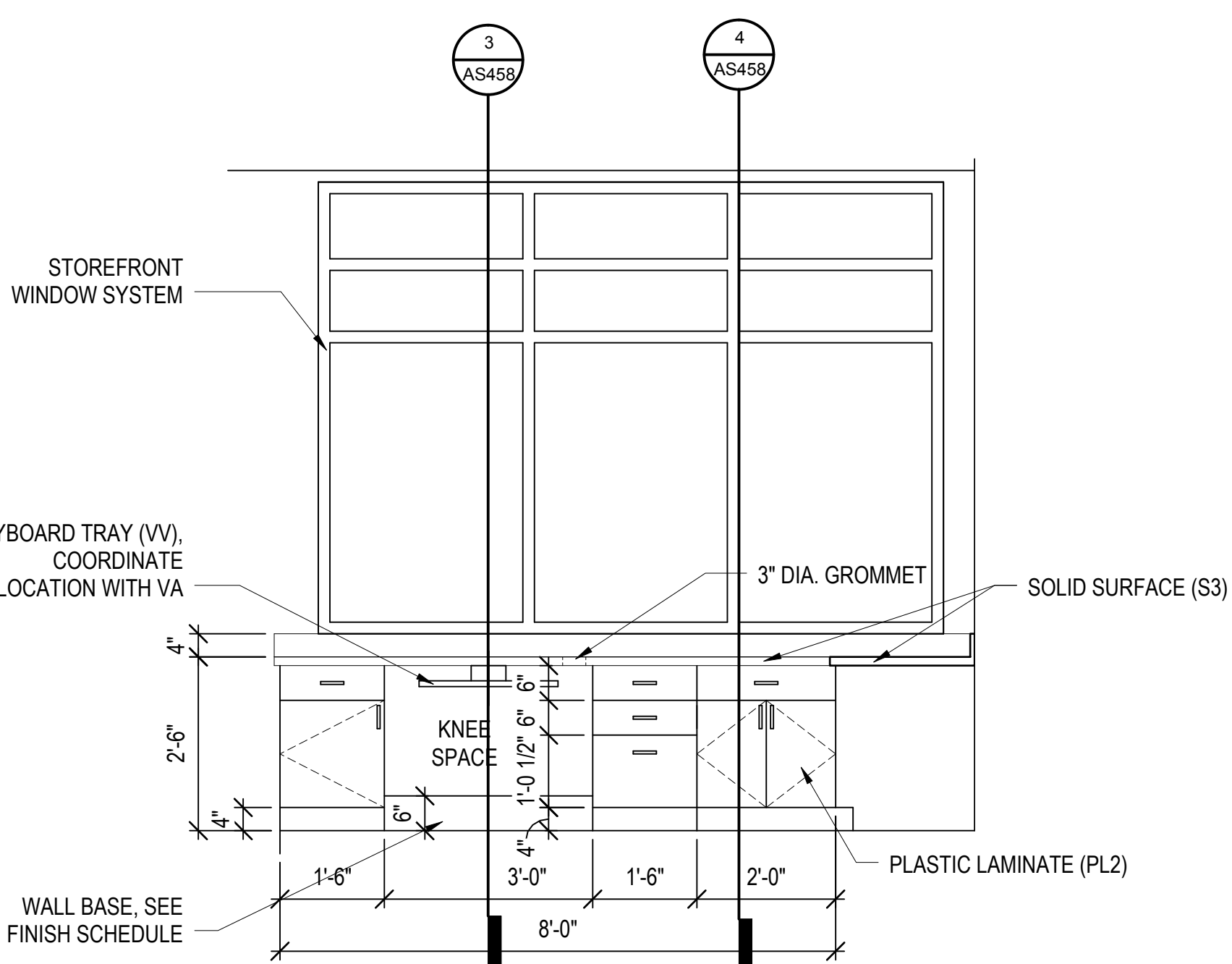


CASEWORK NOTES

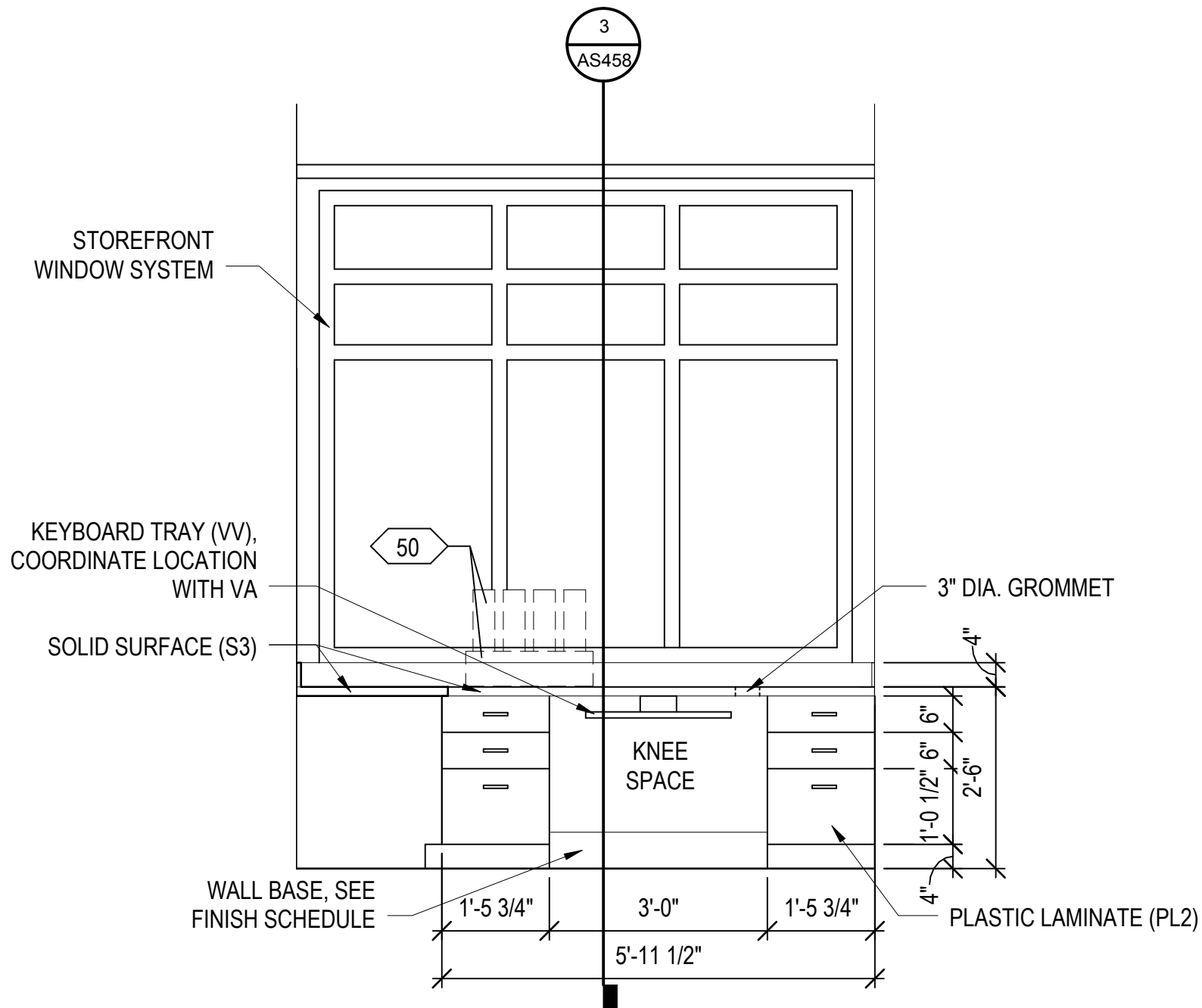
- ALL COUNTERTOPS AND BACKSPASHES ARE TO BE SOLID SURFACE. SEE FINISH SCHEDULE FOR COLOR.
- ALL CABINET BODIES, DOORS AND DRAWERS TO BE PLASTIC LAMINATE PANELS. SEE FINISH SCHEDULE FOR COLOR.
- ALL ADJUSTABLE SHELVES TO BE PLASTIC LAMINATE ON ADJUSTABLE SHELF STANDARDS.
- REFER TO SPEC SECTION 12 32 00 AND 06 61 16 FOR SPECIFICATIONS FOR BUILT-IN CASEWORK SHOWN ON THIS DRAWING.
- ALL CABINET PULLS TO BE 3" RECESSED PULLS, U.N.O.
- PROVIDE BLOCKING IN WALLS FOR CORNER GUARDS, TV BRACKETS, TOILET ACCESSORIES, AND OTHER WALL MOUNTED ITEMS.

GRAPHIC LEGEND

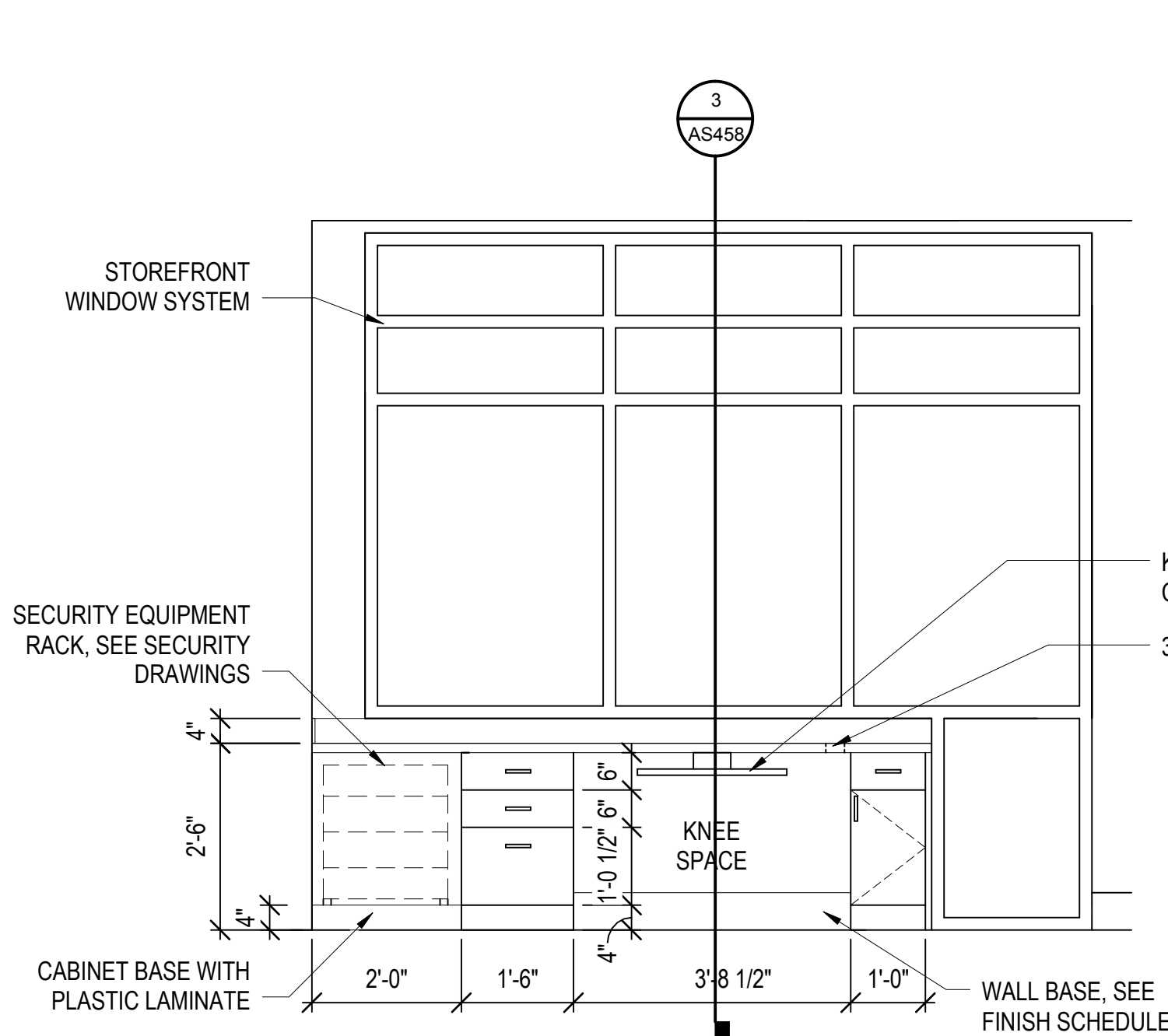
- | | |
|----|--|
| R | REFRIGERATOR (VV) |
| HC | HANDICAP ACCESSIBLE |
| VV | VA FURNISHED AND INSTALLED |
| CC | CONTRACTOR FURNISHED & INSTALLED |
| | EQUIPMENT: SEE EQUIPMENT SCHEDULE DENOTING EQUIPMENT TO BE PROVIDED AND INSTALLED BY THE CONSTRUCTION CONTRACT (CC) AND BY THE VA (VV) |
| | FF&E FURNITURE (VV)(DESIGNED AND PROVIDED BY VA) |
| | EQUIPMENT SYMBOL, SEE AS402 FOR EQUIPMENT SCHEDULE |



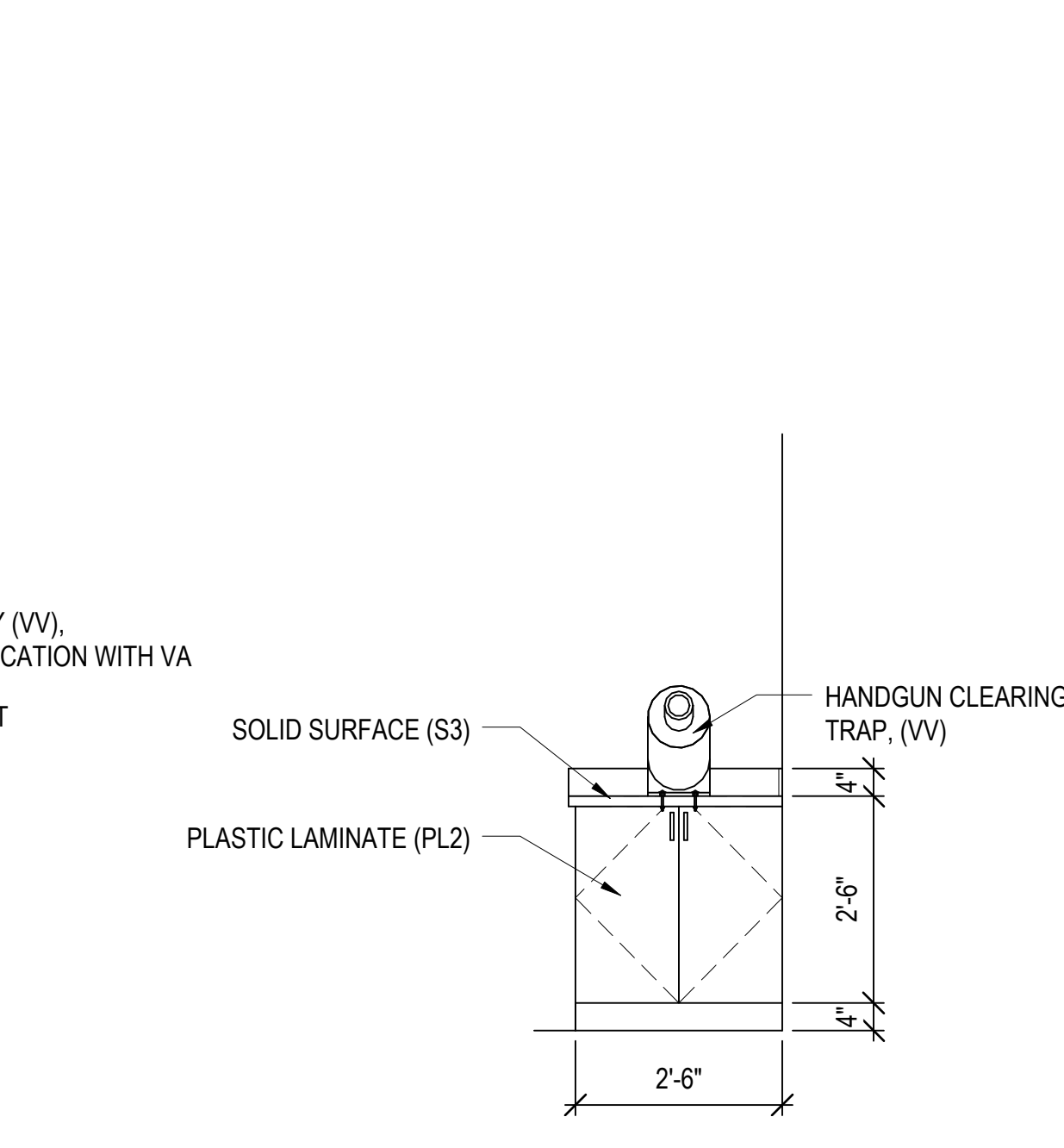
1 CASEWORK ELEV. - OPERATIONS ROOM A
AS452 1/2" = 1'-0"



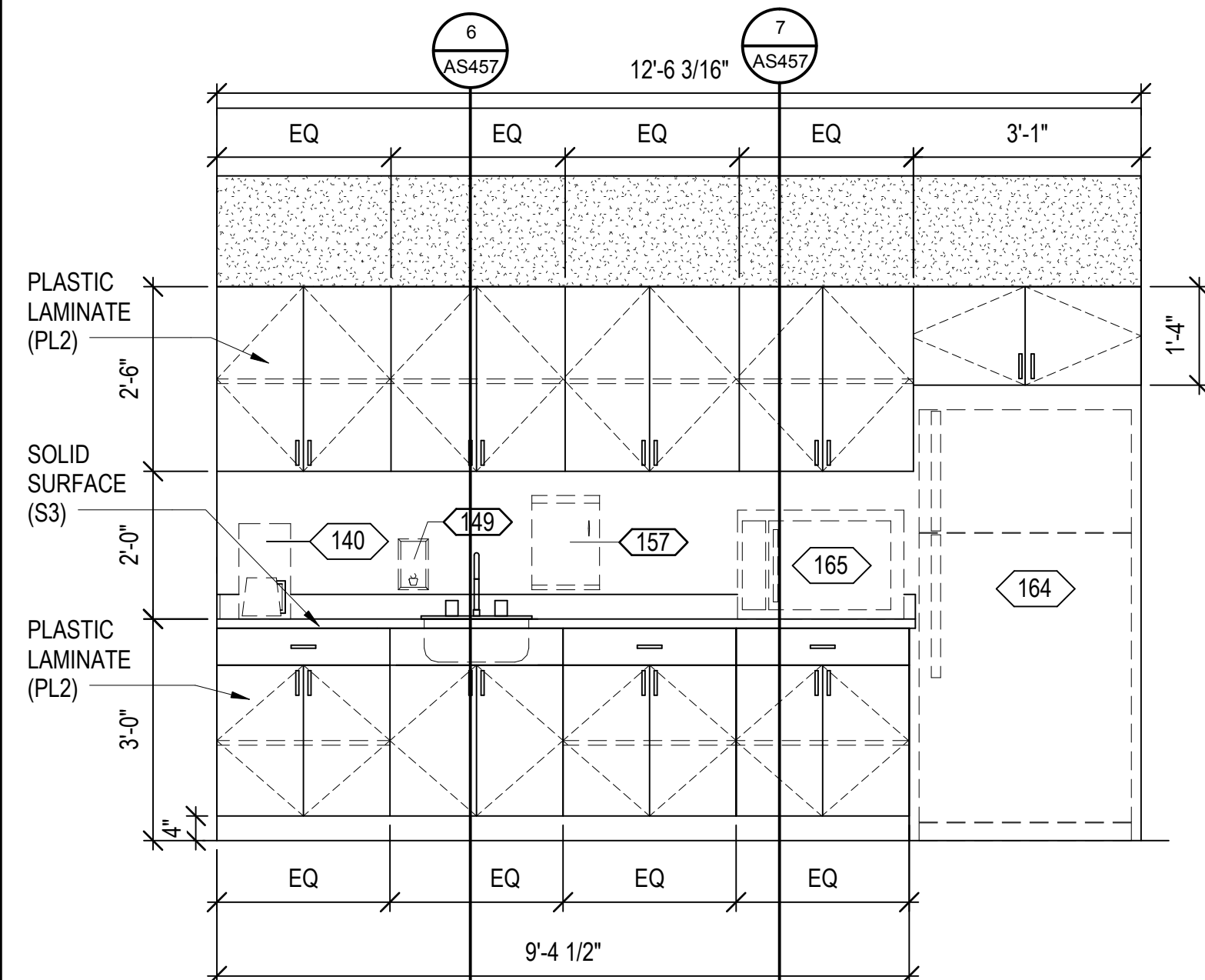
2 CASEWORK ELEV. - OPERATIONS ROOM B
AS452 1/2" = 1'-0"



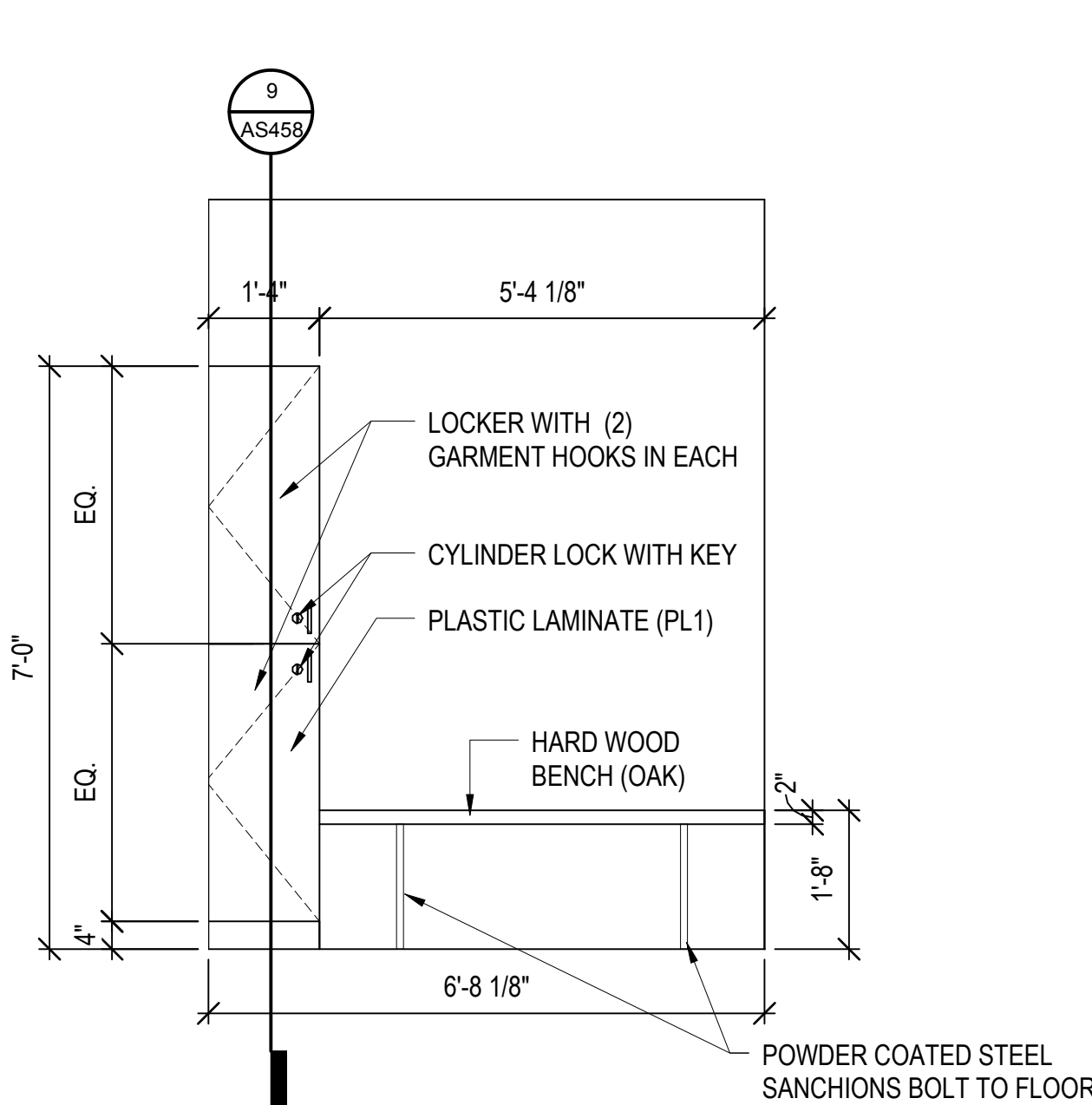
3 CASEWORK ELEV. - OPERATIONS ROOM C
AS452 1/2" = 1'-0"



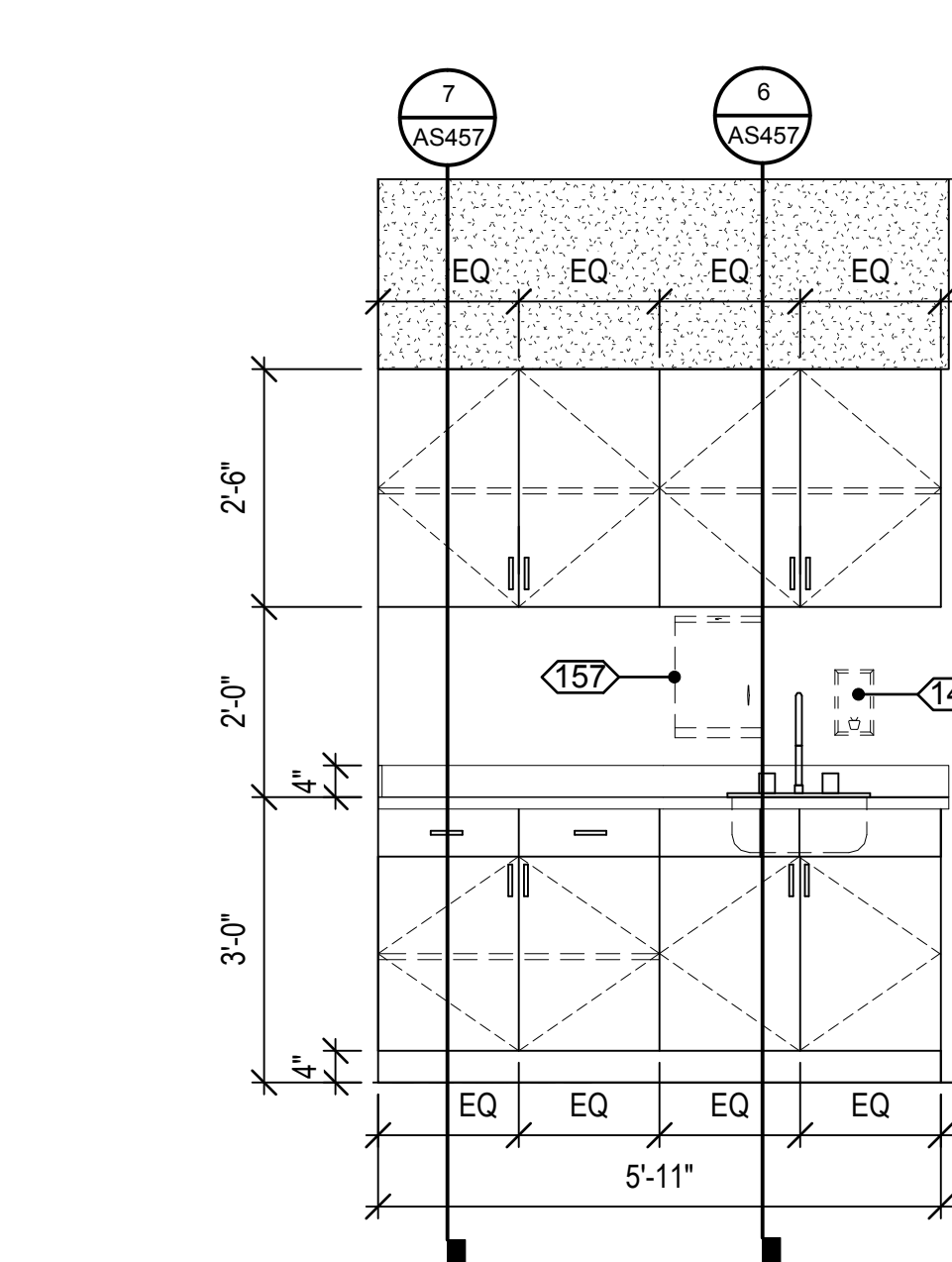
4 CASEWORK ELEVATIONS - SEC. STG. VAULT
AS452 1/2" = 1'-0"



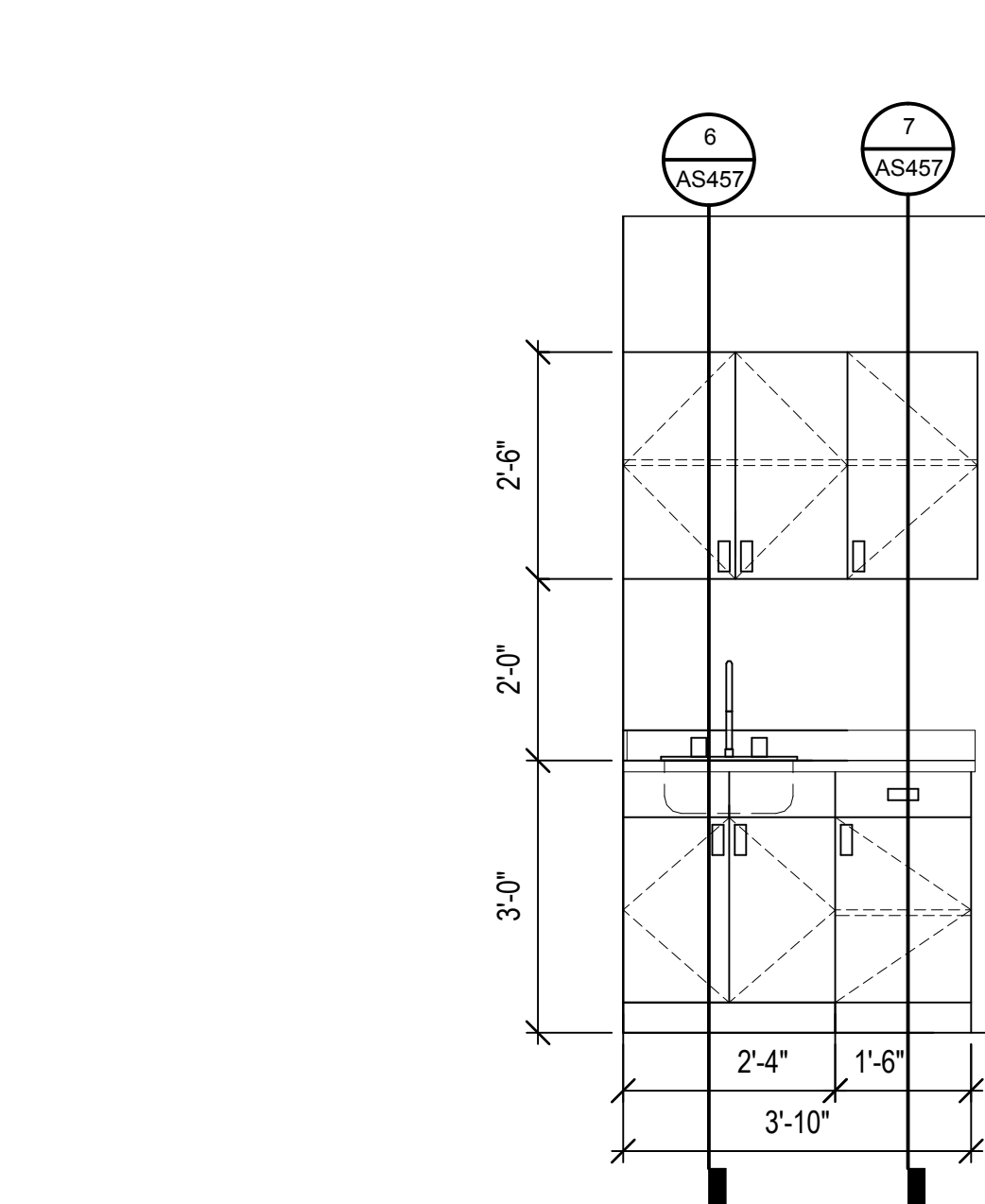
5 CASEWORK ELEV. - BREAKROOM
AS452 1/2" = 1'-0"



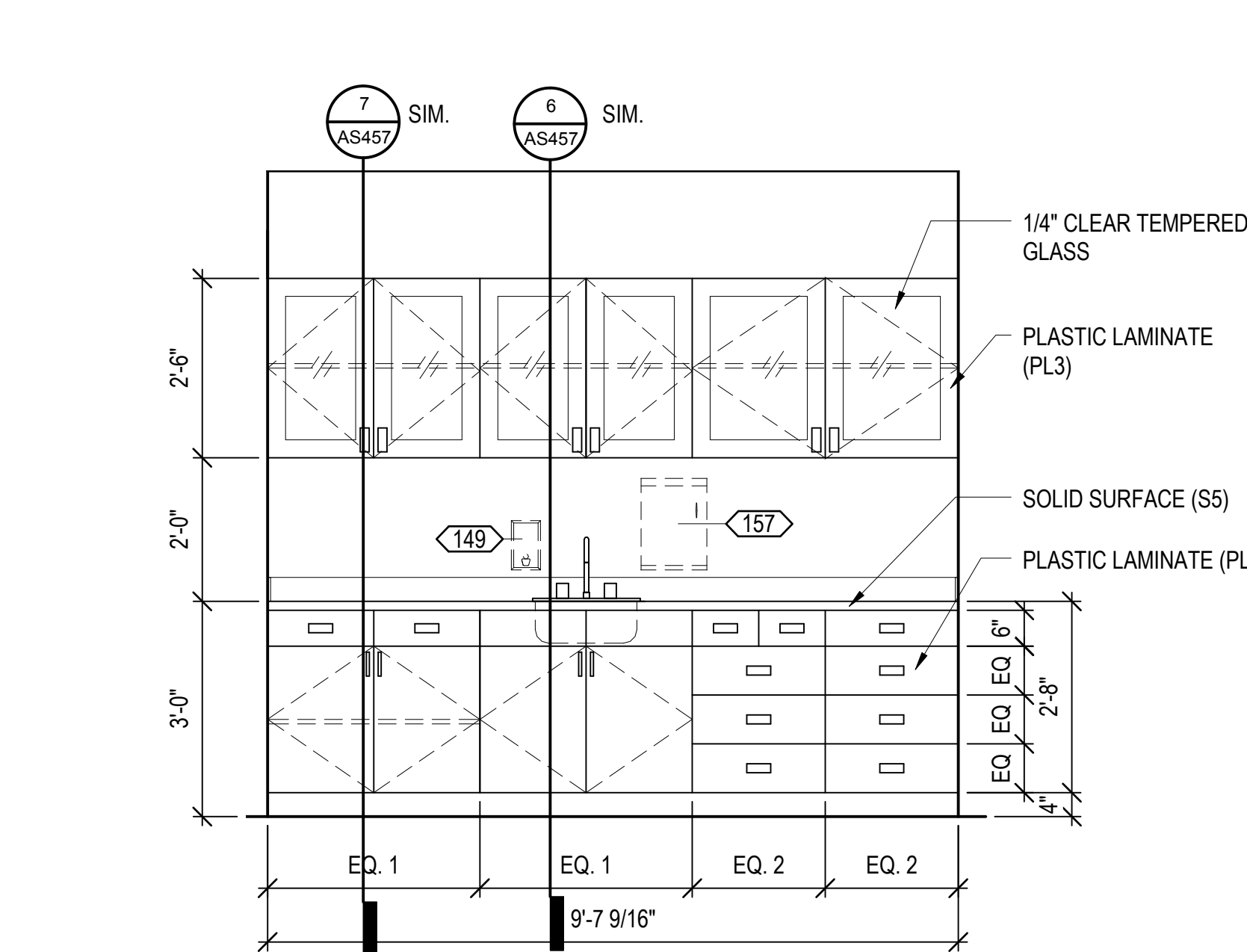
6 CASEWORK ELEV. -RADIOLOGY DRESSING AREA
AS452 1/2" = 1'-0"



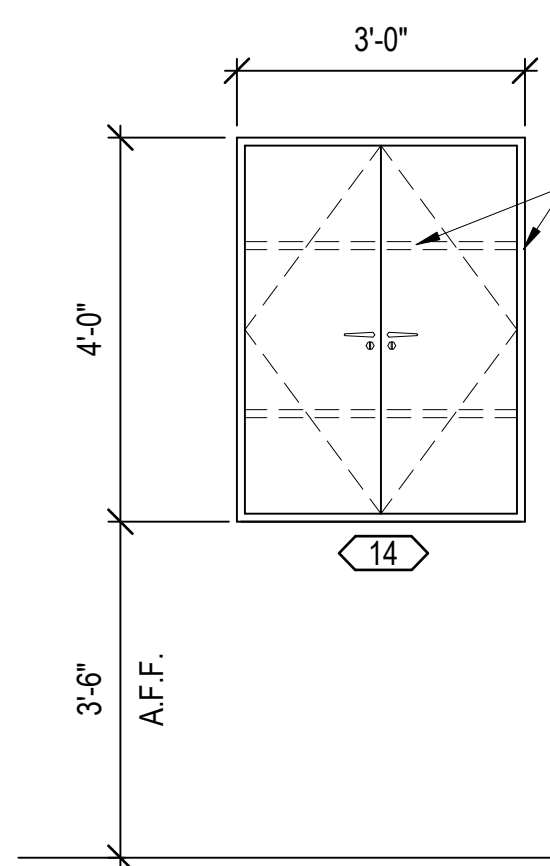
7 CASEWORK ELEV. - ULTRASOUND
AS452 1/2" = 1'-0"



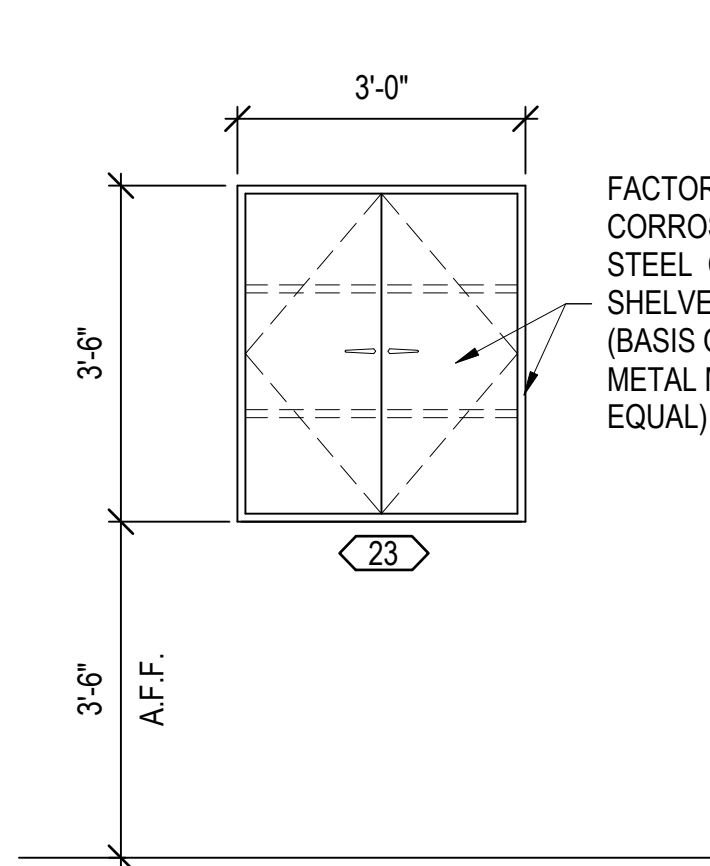
8 CASEWORK ELEV. -VISION SCREENING
AS452 1/2" = 1'-0"



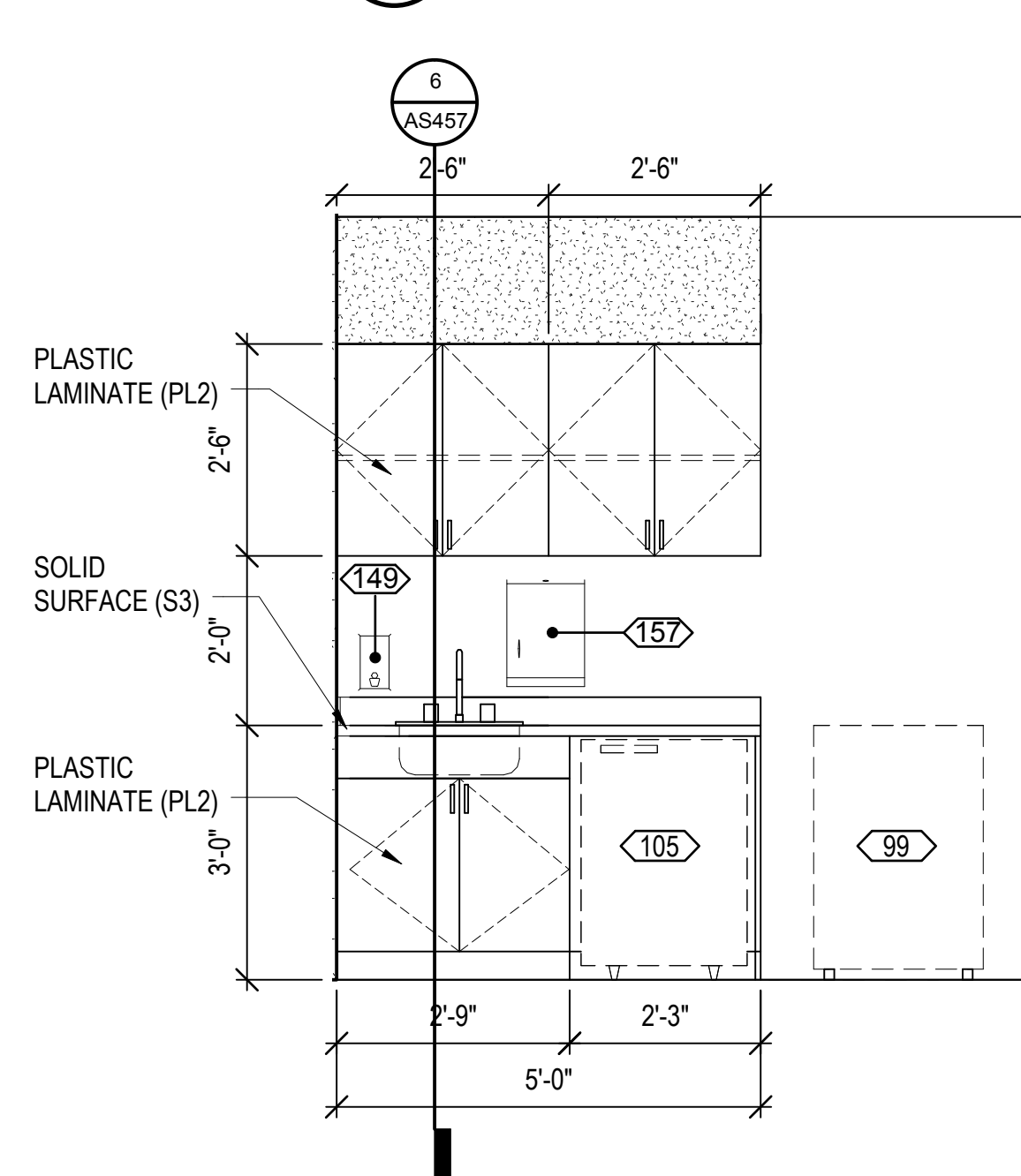
9 CASEWORK ELEV. - INSTR. STG & STER.
AS452 1/2" = 1'-0"



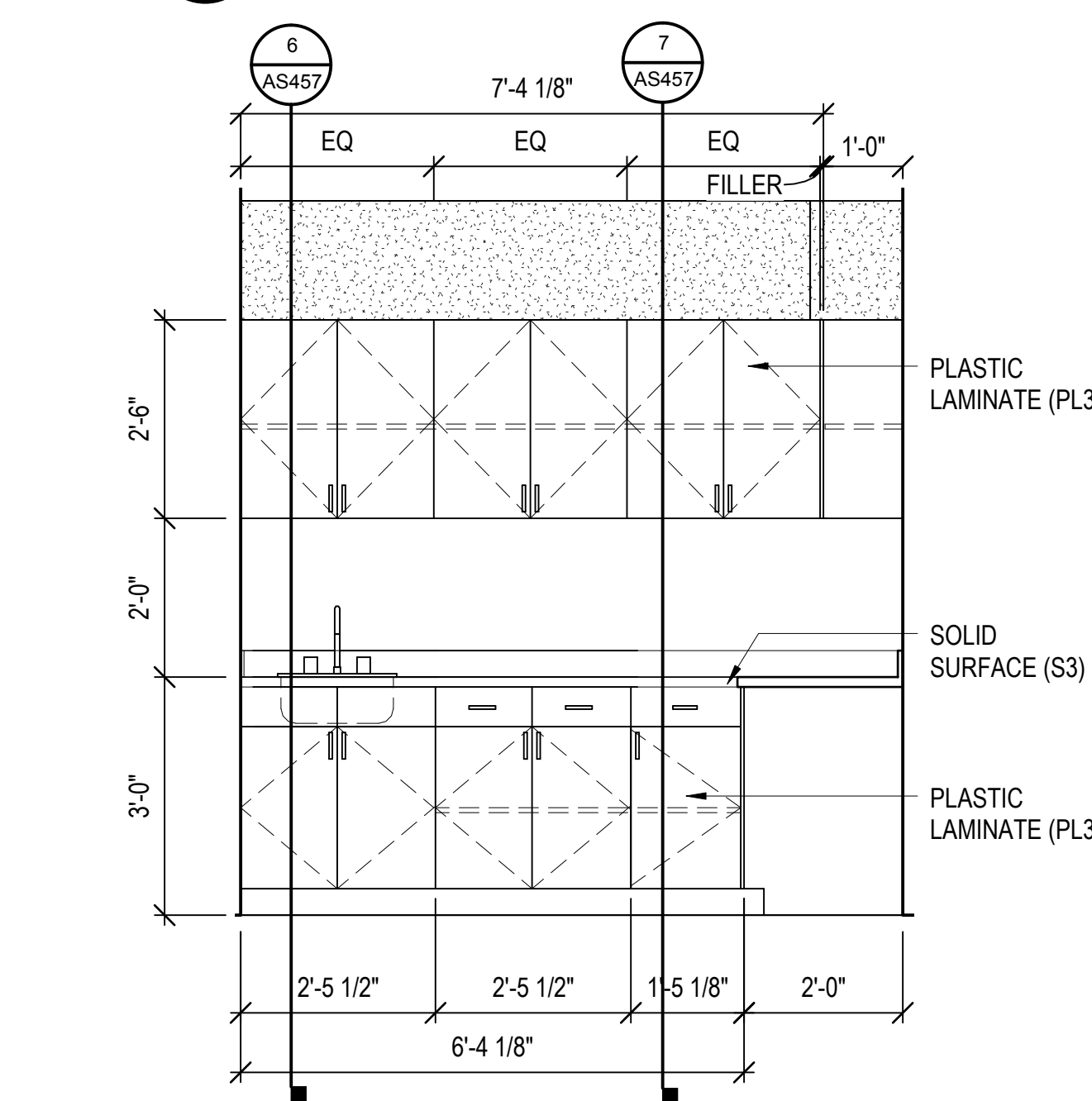
10 WALL HUNG CABINET - EQUIP. #14 (CC)
AS452 1/2" = 1'-0"



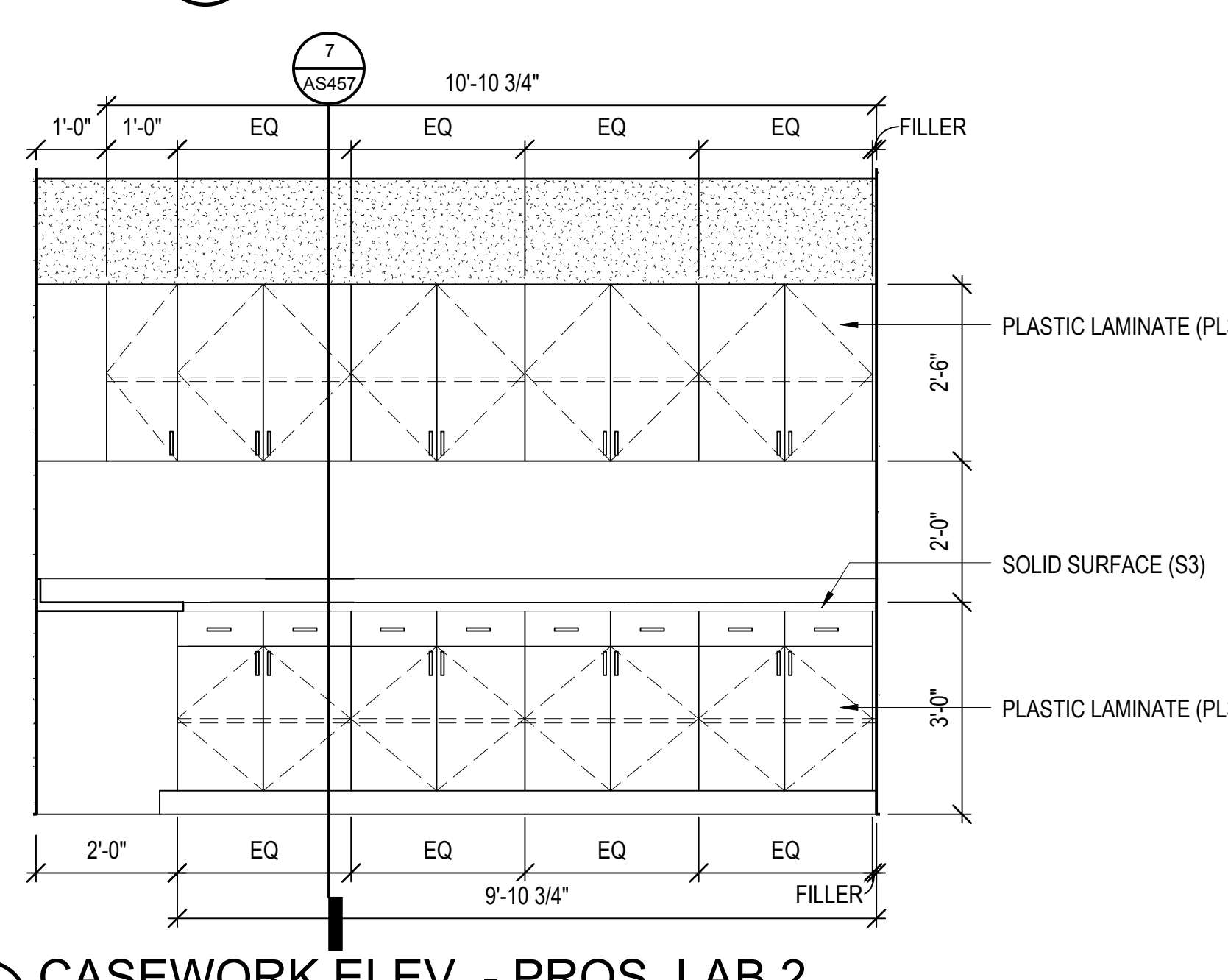
11 WALL HUNG CABINET - EQUIP. #23 (CC)
AS452 1/2" = 1'-0"



12 CASEWORK ELEV. - MEDICINE ROOM D12
AS452 1/2" = 1'-0"



13 CASEWORK ELEV. - PROS. LAB
AS452 1/2" = 1'-0"



14 CASEWORK ELEV. - PROS. LAB 2
AS452 1/2" = 1'-0"

CONSULTANTS:

CIVIL:
KENNETH HORNE & ASSOCIATES
7201 NORTH 9TH AVENUE, STE. 6
PENSACOLA, FLORIDA 32504
PH: (850) 471-0005
FX: (850) 471-0053

COMMISSION:
SCHMIDT CONSULTING GROUP, INC.
139 EAST GOVERNMENT STREET
PENSACOLA, FLORIDA 32502
PH: (850) 438-0050
FX: (850) 438-0051

SURVEYORS:
KCI TECHNOLOGIES, INC.
10401 HIGHLAND MANOR DRIVE, SUITE 120
TAMPA, FLORIDA 33610
PH: (813) 740-2300

LANDSCAPE ARCHITECT:
CSA GROUP, INC.
6300 PICCADILLY SQUARE DRIVE
MOBILE, ALABAMA 36689
PH: (251) 344-4023
FX: (251) 344-4022

ARCHITECTURE:
BULLOCK TICE ASSOCIATES, INC.
909 EAST CERVANTES STREET
PENSACOLA, FL 32501
PH: (850) 434-5444
FX: (850) 432-8208

ARCHITECT/ENGINEERS:



BES DESIGN/BUILD, LLC
766 Middle St, Fairhope, AL 36532
Phone: 251.990.5778 Fax: 251.990.3716

Drawing Title
CASEWORK ELEVATIONS

Approved: Project Director

Project Title
PANAMA CITY
JOINT OUTPATIENT CLINIC
VA GULF COAST HEALTH CARE

Location
PANAMA CITY, FLORIDA

Date
MARCH 2012

Checked
BM

Drawn
TWMF

Project Number
520-326

Building Number
-

Drawing Number
AS452

Dwg. 31 of 42

Office of
Construction
and Facilities
Management



FINAL SUBMISSION