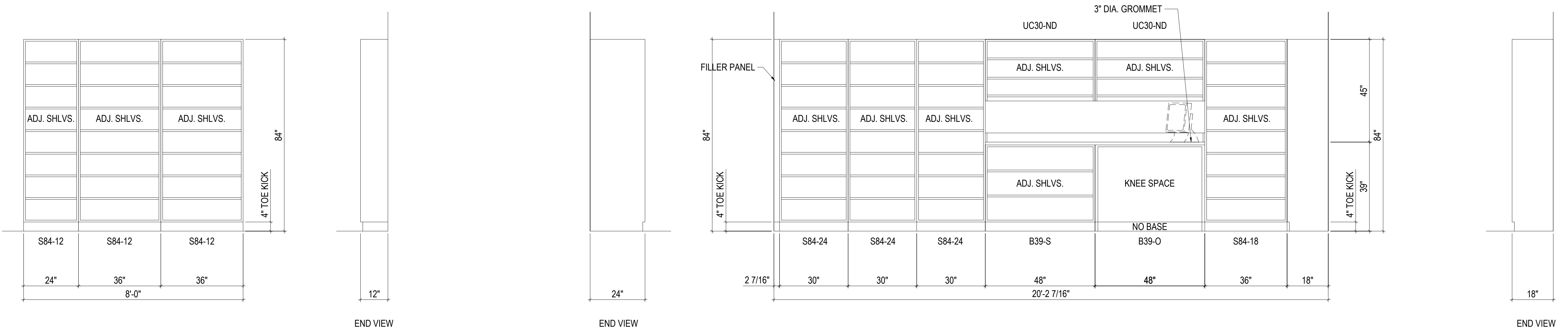
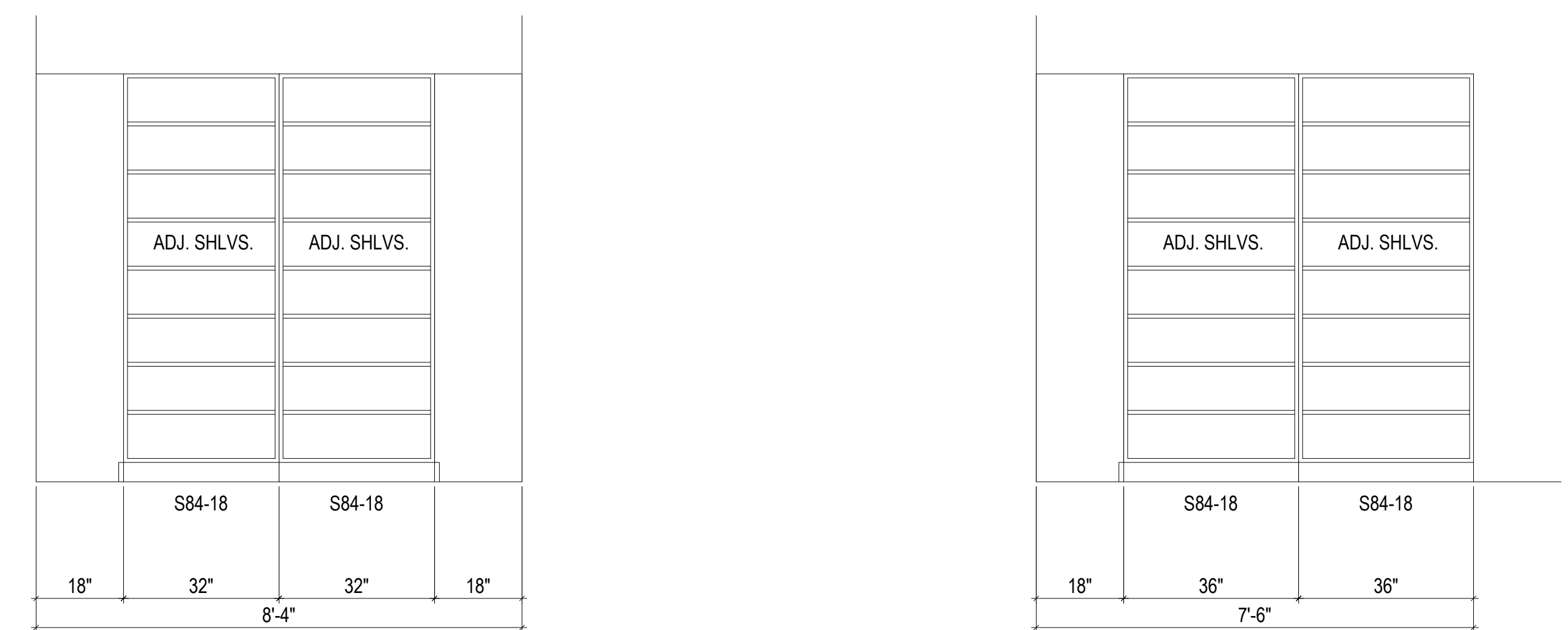


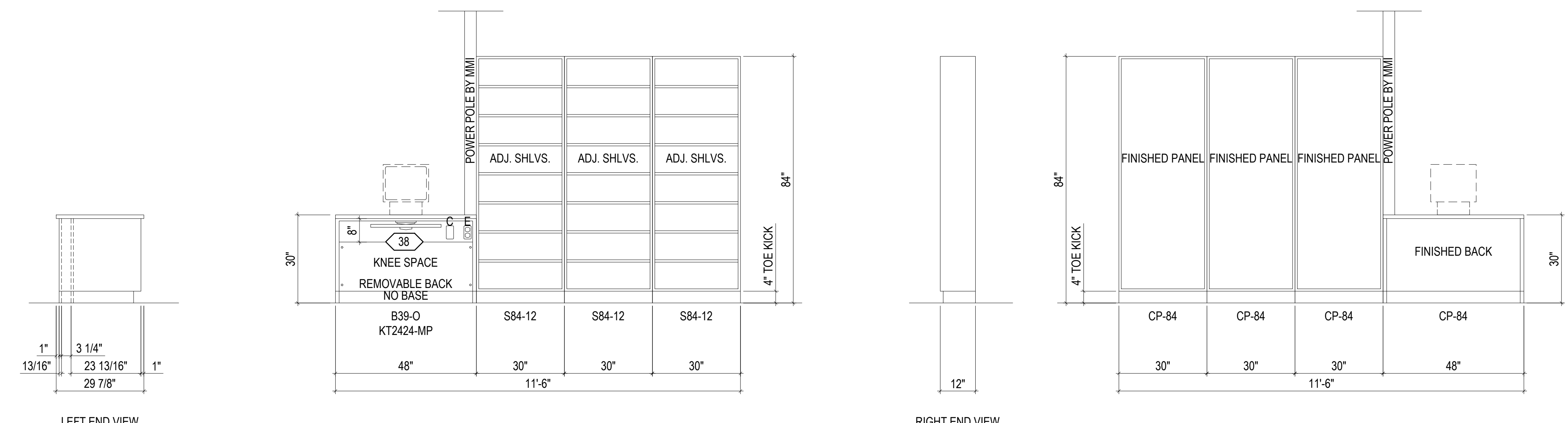
3/26/2012 10:03:22 AM
D:_MAC2012\roberta13271-01_BES_JOPC_walls.rvt
one eighth inch = one foot
one quarter inch = one foot
three eighths inch = one foot
one half inch = one foot
one inch = one foot
one and one half inches = one foot
two inches = one foot
three inches = one foot
four inches = one foot
five inches = one foot
six inches = one foot
seven inches = one foot
eight inches = one foot
nine inches = one foot
ten inches = one foot
eleven inches = one foot
twelve inches = one foot
thirteen inches = one foot
fourteen inches = one foot
fifteen inches = one foot
sixteen inches = one foot
seventeen inches = one foot
eighteen inches = one foot
nineteen inches = one foot
twenty inches = one foot
twenty one inches = one foot
twenty two inches = one foot
twenty three inches = one foot
twenty four inches = one foot
twenty five inches = one foot
twenty six inches = one foot
twenty seven inches = one foot
twenty eight inches = one foot
twenty nine inches = one foot
thirty inches = one foot
thirty one inches = one foot
thirty two inches = one foot
thirty three inches = one foot
thirty four inches = one foot
thirty five inches = one foot
thirty six inches = one foot
thirty seven inches = one foot
thirty eight inches = one foot
thirty nine inches = one foot
forty inches = one foot
forty one inches = one foot
forty two inches = one foot
forty three inches = one foot
forty four inches = one foot
forty five inches = one foot
forty six inches = one foot
forty seven inches = one foot
forty eight inches = one foot
forty nine inches = one foot
fifty inches = one foot
fifty one inches = one foot
fifty two inches = one foot
fifty three inches = one foot
fifty four inches = one foot
fifty five inches = one foot
fifty six inches = one foot
fifty seven inches = one foot
fifty eight inches = one foot
fifty nine inches = one foot
sixty inches = one foot
sixty one inches = one foot
sixty two inches = one foot
sixty three inches = one foot
sixty four inches = one foot
sixty five inches = one foot
sixty six inches = one foot
sixty seven inches = one foot
sixty eight inches = one foot
sixty nine inches = one foot
seventy inches = one foot
seventy one inches = one foot
seventy two inches = one foot
seventy three inches = one foot
seventy four inches = one foot
seventy five inches = one foot
seventy six inches = one foot
seventy seven inches = one foot
seventy eight inches = one foot
seventy nine inches = one foot
eighty inches = one foot
eighty one inches = one foot
eighty two inches = one foot
eighty three inches = one foot
eighty four inches = one foot
eighty five inches = one foot
eighty six inches = one foot
eighty seven inches = one foot
eighty eight inches = one foot
eighty nine inches = one foot
ninety inches = one foot
ninety one inches = one foot
ninety two inches = one foot
ninety three inches = one foot
ninety four inches = one foot
ninety five inches = one foot
ninety six inches = one foot
ninety seven inches = one foot
ninety eight inches = one foot
ninety nine inches = one foot
one hundred inches = one foot



ELEVATION 1 1/2" = 1'-0"
ELEVATION 2 1/2" = 1'-0"



ELEVATION 3 1/2" = 1'-0"
ELEVATION 4 1/2" = 1'-0"



ELEVATION 5 1/2" = 1'-0"
ELEVATION 6 1/2" = 1'-0"

GENERAL NOTES

1. REFER TO SPEC SECTION 12 34 00 FOR SPECIFICATIONS FOR MANUFACTURED MODULAR CASEWORK, COUNTERTOPS, AND INTEGRATED UTILITIES AND PLUMBING FIXTURES TO BE PROVIDED AS A TOTAL SYSTEM FOR ALL WORK SHOWN ON THIS DRAWING U.N.O. (MMI SYSTEMS IS BASIS OF DESIGN)

2. BASE AND UPPER CABINET BODIES, DOORS AND DRAWERS TO HAVE PLASTIC LAMINATE FINISH, SEE FINISH SCHEDULE FOR COLOR.

3. COUNTERTOPS AND BACKSPLASHES TO BE SOLID SURFACE, SEE FINISH SCHEDULE FOR COLOR.

4. PROVIDE PLASTIC LAMINATE CLAD CHASE TO CONCEAL CONDUITS FROM TOP OF MODULAR CASEWORK TO CEILING.

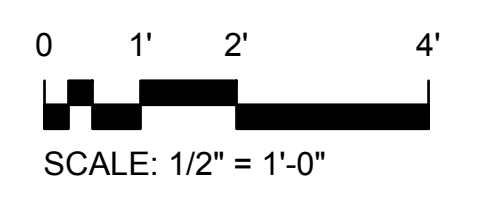
5. PROVIDE BLOCKING IN WALLS FOR CORNER GUARDS, TV BRACKETS, TOILET ACCESSORIES, AND OTHER WALL MOUNTED ITEMS.

GRAPHIC LEGEND

E POWER OUTLET AND WIRING MOUNTED IN CASEWORK BY MODULAR CASEWORK MANUFACTURER. ELECTRICAL SUBCONTRACTOR TO MAKE FINAL CONNECTIONS TO BUILDING

C COMM/DATA OUTLET AND CABLING MOUNTED IN CASEWORK RACEWAY/CONDUIT. OUTLET, FACEPLATE AND CABLING PROVIDED AND INSTALLED BY COMM SUBCONTRACTOR (NOT CASEWORK MANUFACTURER)

NO BASE NO CABINET BASE (WALL BASE PROVIDED AROUND ALL ROOM PERIMETER WALLS)



FINAL SUBMISSION

Revisions:

Date

CONSULTANTS:

CIVIL:
KENNETH HORNE & ASSOCIATES
7201 NORTH 9TH AVENUE, STE. 6
PENSACOLA, FLORIDA 32504
PH: (850) 471-9095
FX: (850) 471-0553

COMM/IDS:
SCHMIDT CONSULTING GROUP, INC.
139 EAST GOVERNMENT STREET
PENSACOLA, FLORIDA 32202
PH: (850) 438-0050
FX: (850) 432-8611

SURVEYORS:
KCI TECHNOLOGIES, INC.
10401 HIGHLAND MANOR DRIVE, SUITE 120
TAMPA, FLORIDA 33610
PH: (813) 740-2300

LANDSCAPE ARCHITECT:
CSA GROUP, INC.
6300 PICCADILLY SQUARE DRIVE
MOBILE, ALABAMA 36689
PH: (251) 344-4023
FX: (251) 344-4022

ARCHITECTURE:
BULLOCK TICE ASSOCIATES, INC.
909 EAST CERVANTES STREET
PENSACOLA, FL 32501
PH: (850) 434-5444
FX: (850) 432-6208

STATE OF FLORIDA
POWER & MAGUIRE
0013571
29 MARCH 2012
REGISTERED ARCHITECT

ARCHITECT/ENGINEERS:

BES
DESIGN/BUILD
BES DESIGN/BUILD, LLC
766 Middle St, Fairhope, AL 36532
Phone: 251.990.5778 Fax: 251.990.3716

Drawing Title
MODULAR CASEWORK ELEVATIONS -
PHARMACY

Approved: Project Director

Project Title
PANAMA CITY
JOINT OUTPATIENT CLINIC
VA GULF COAST HEALTH CARE

Location
PANAMA CITY, FLORIDA

Date
MARCH 2012

Checked
BM

Drawn
TW/MF

Project Number
520-326

Building Number
-

Drawing Number
AS455

Dwg. 34 of 42

Office of
Construction
and Facilities
Management
Department of
Veterans Affairs