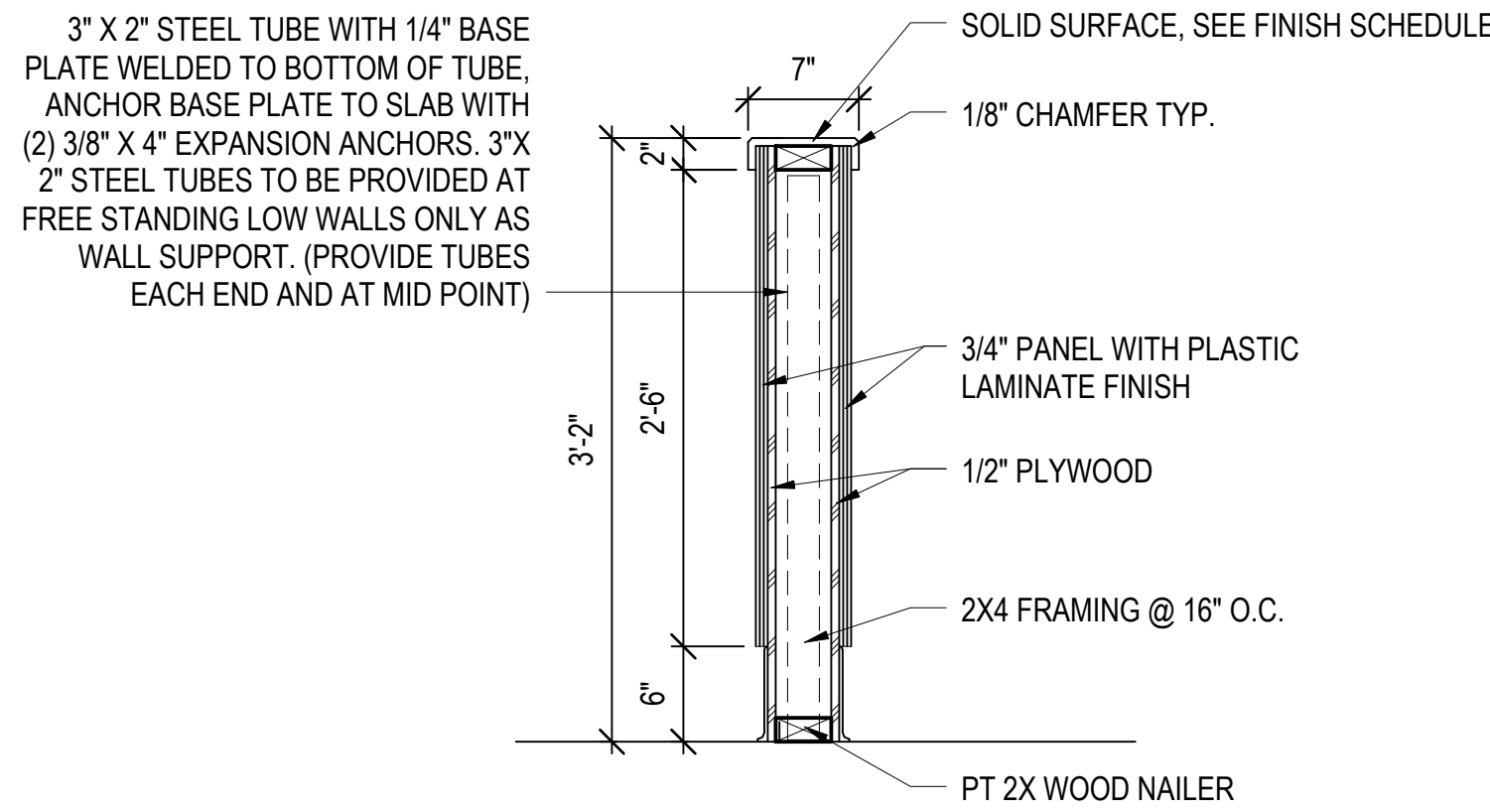
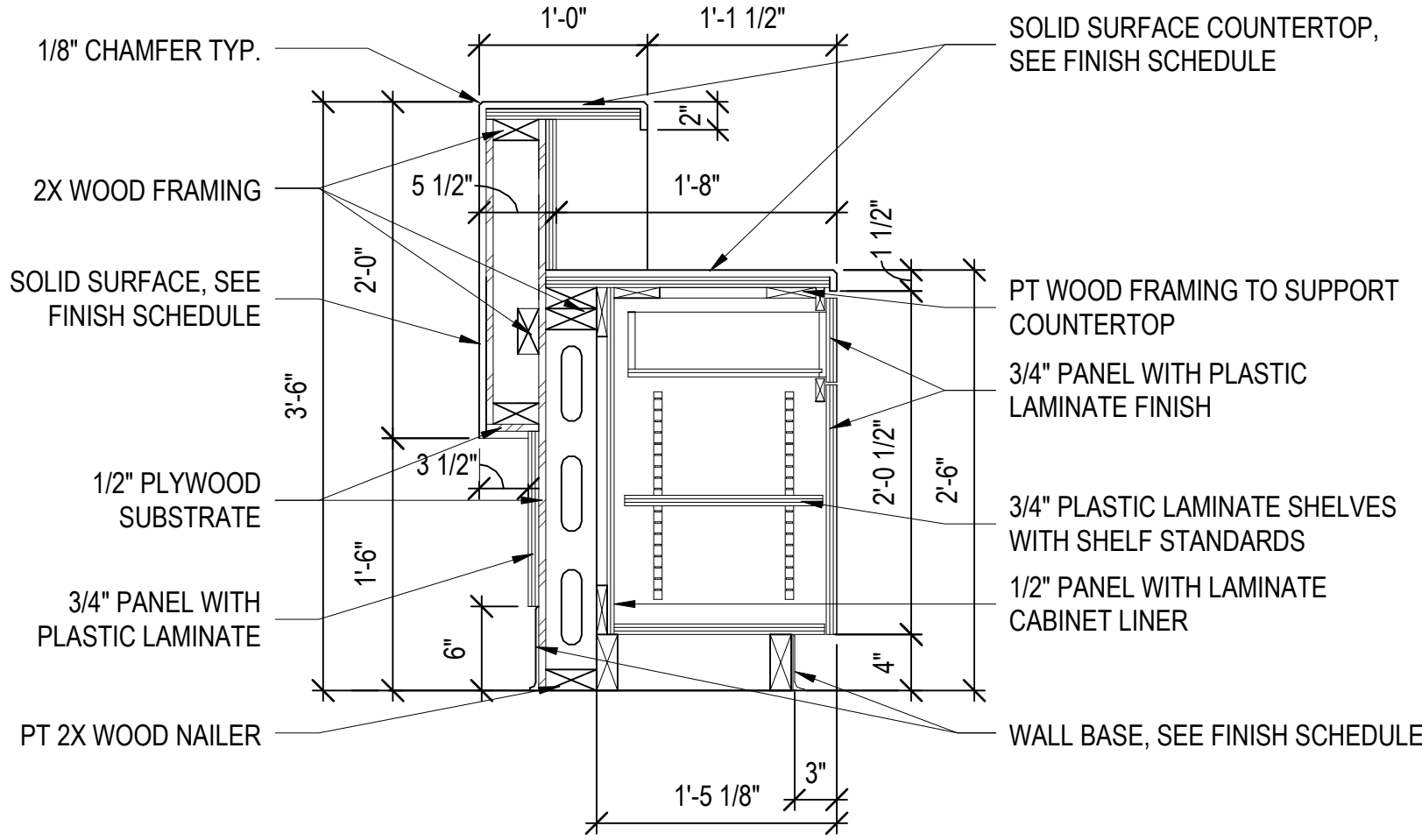
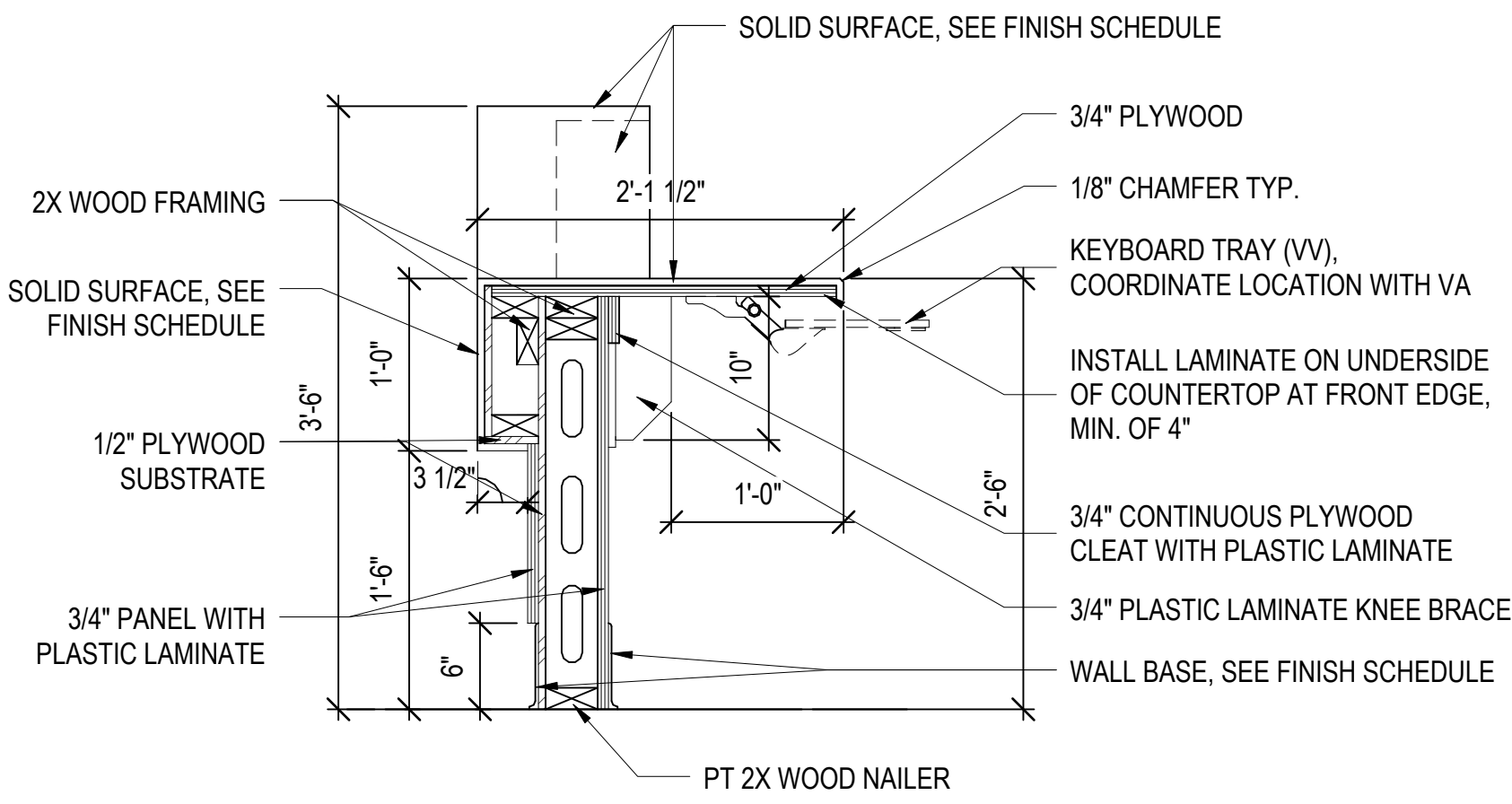
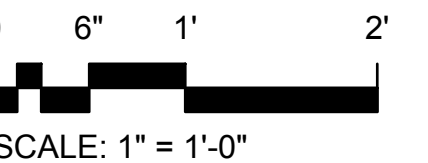
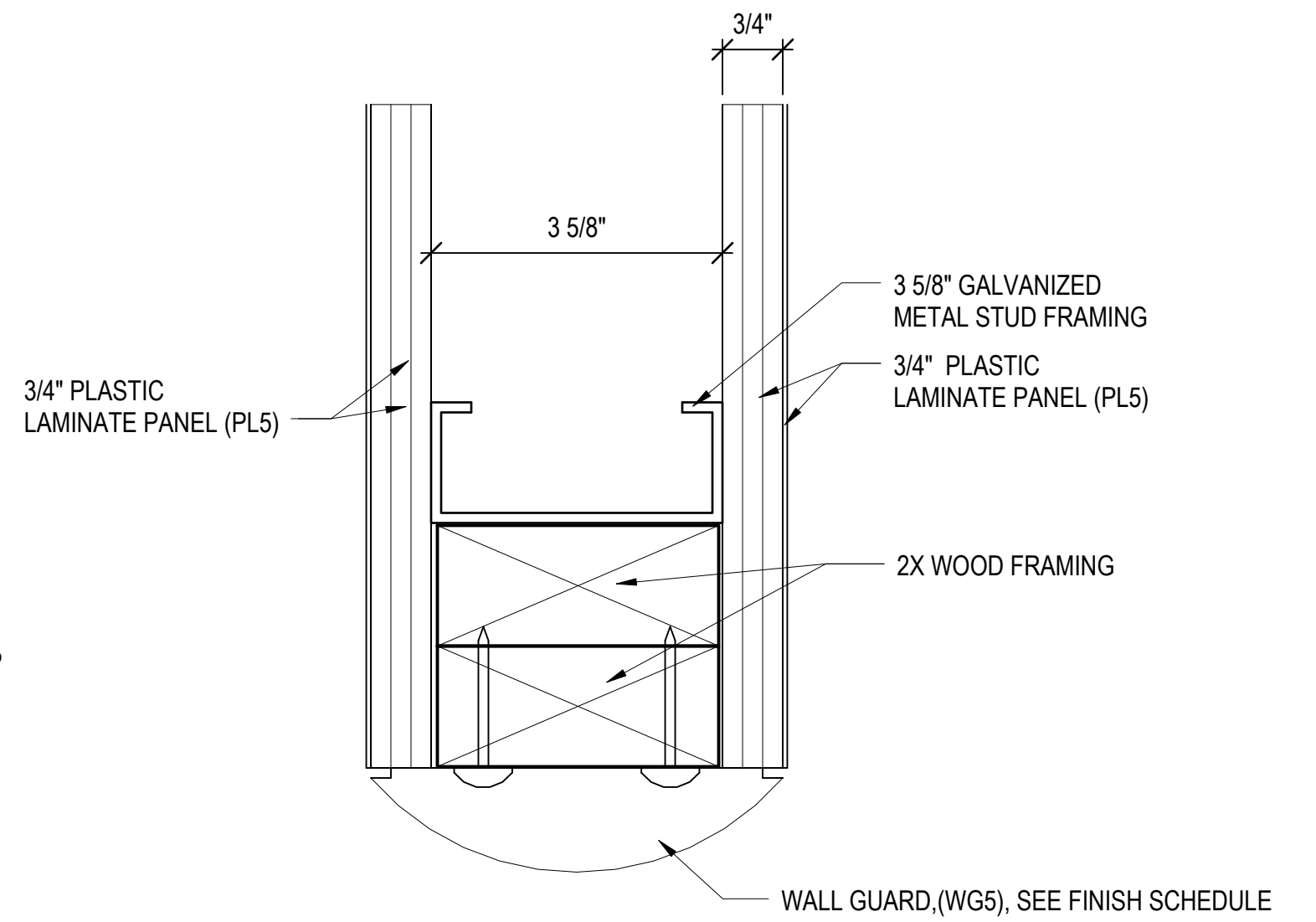
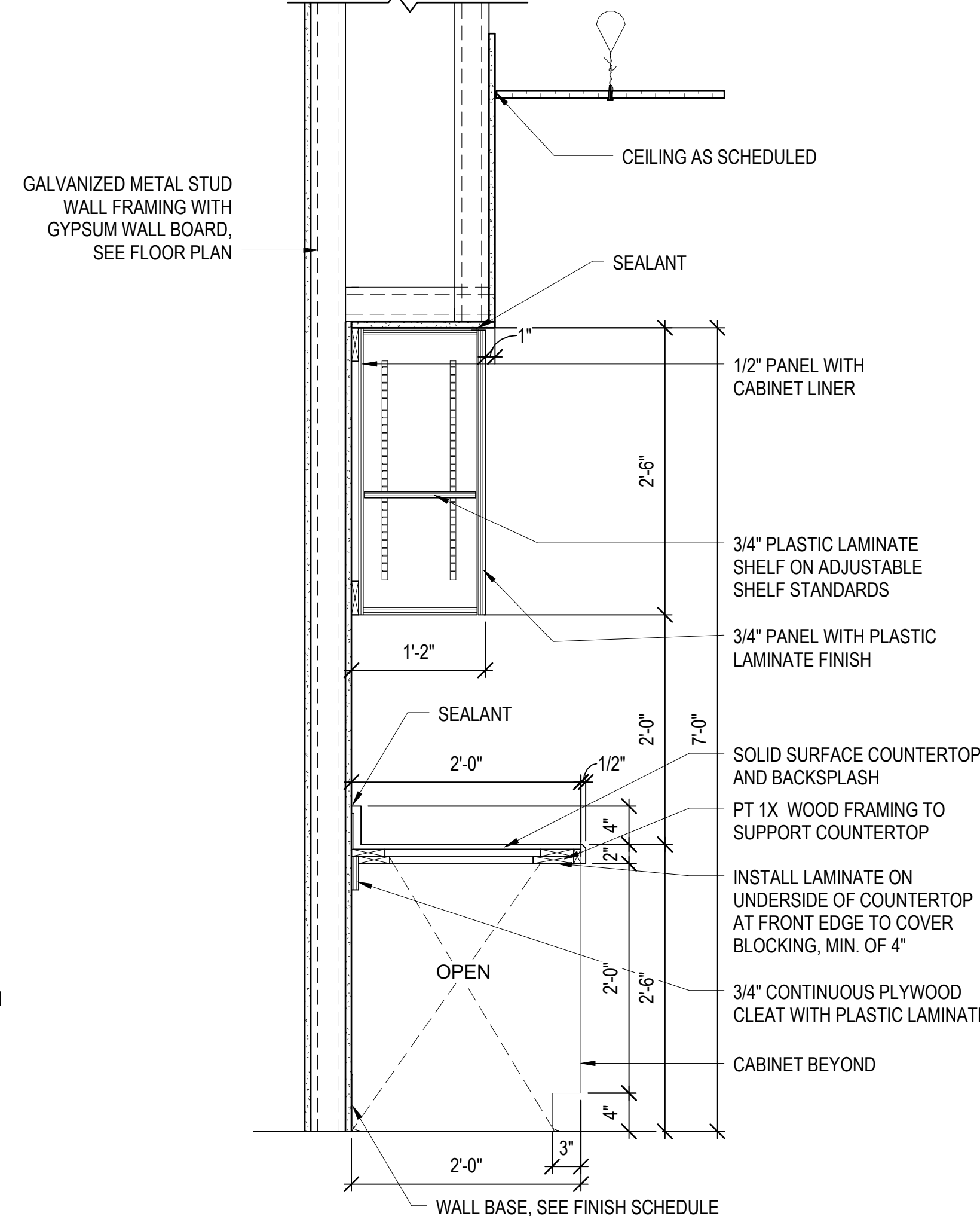
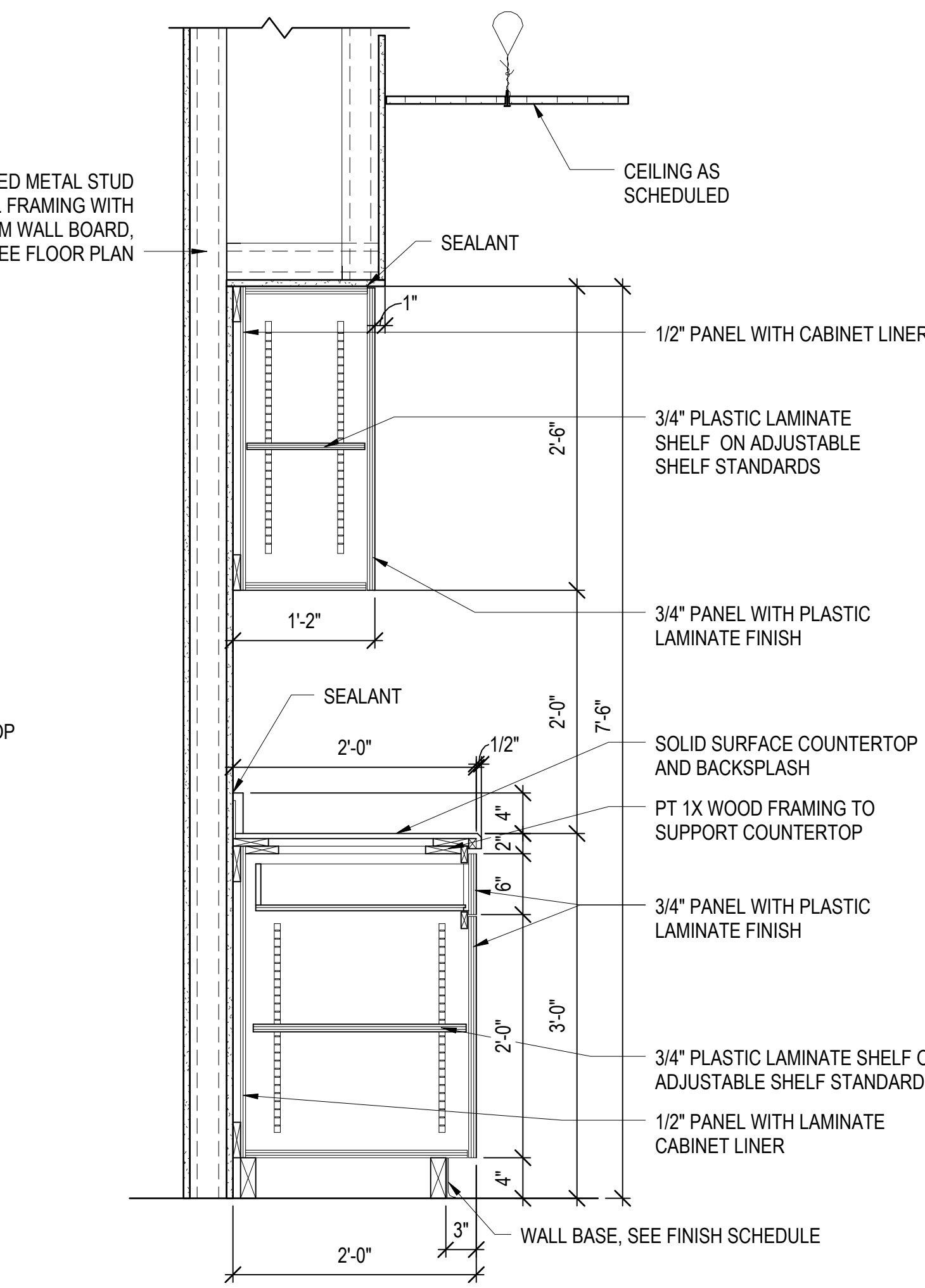
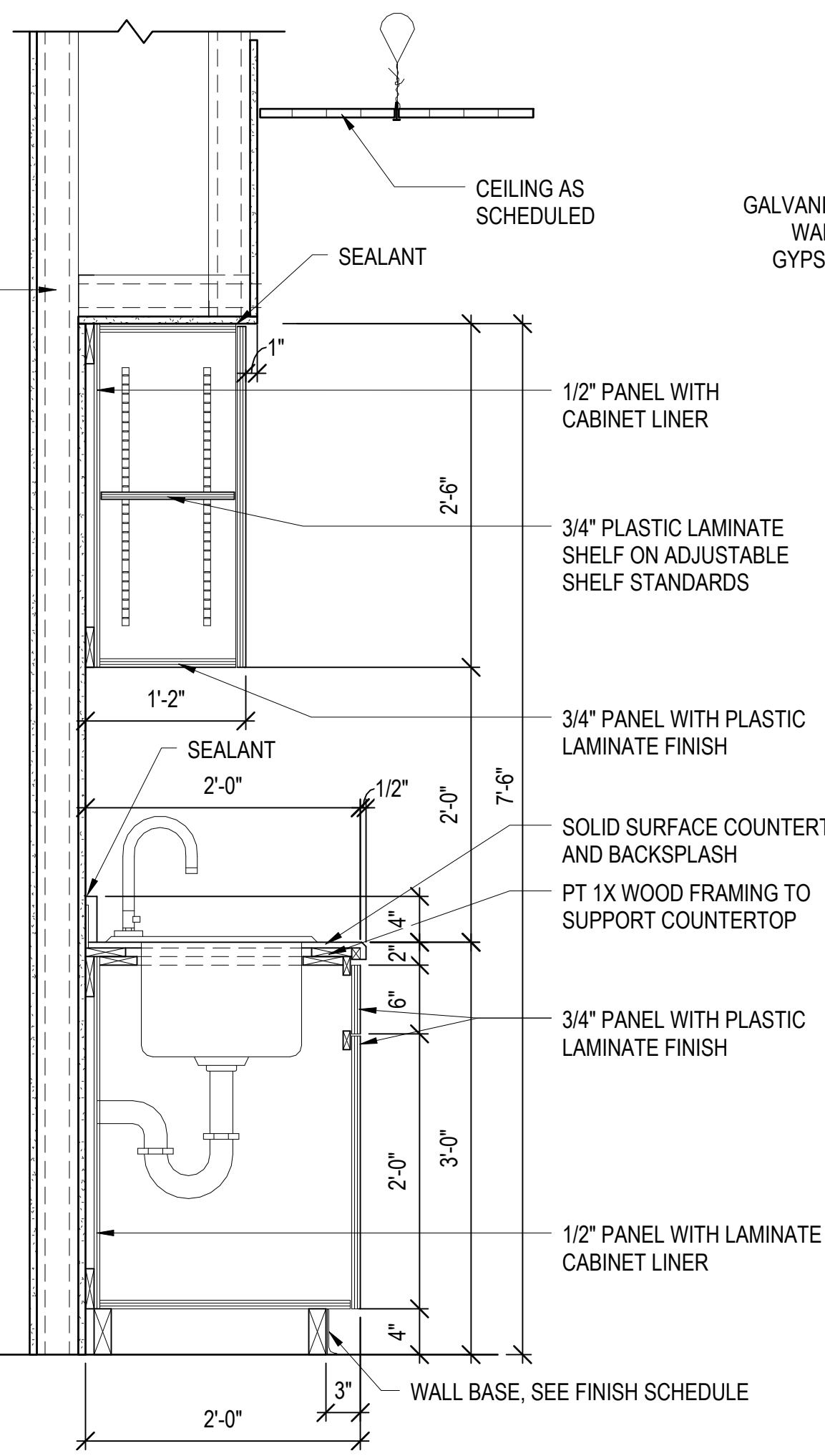
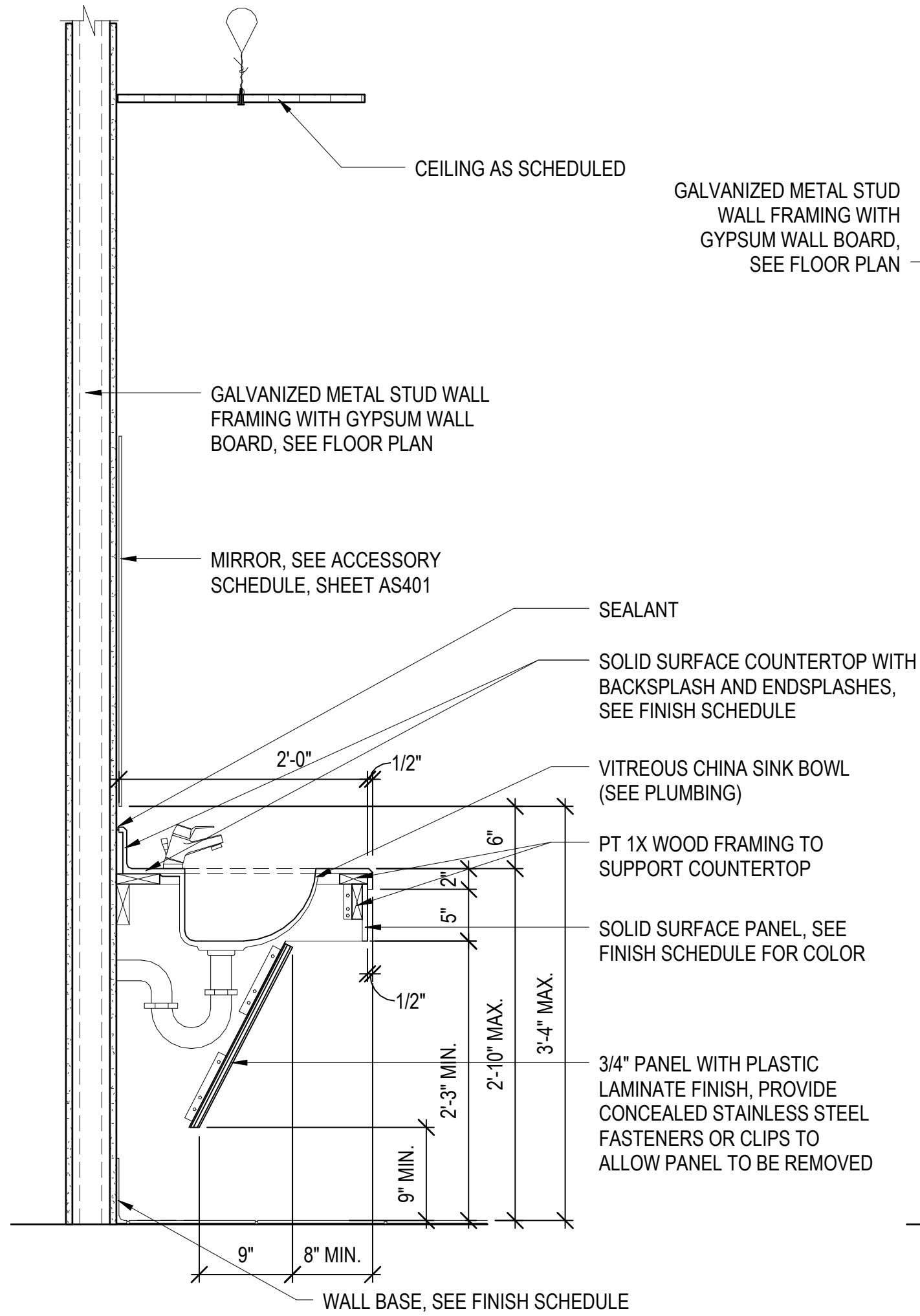
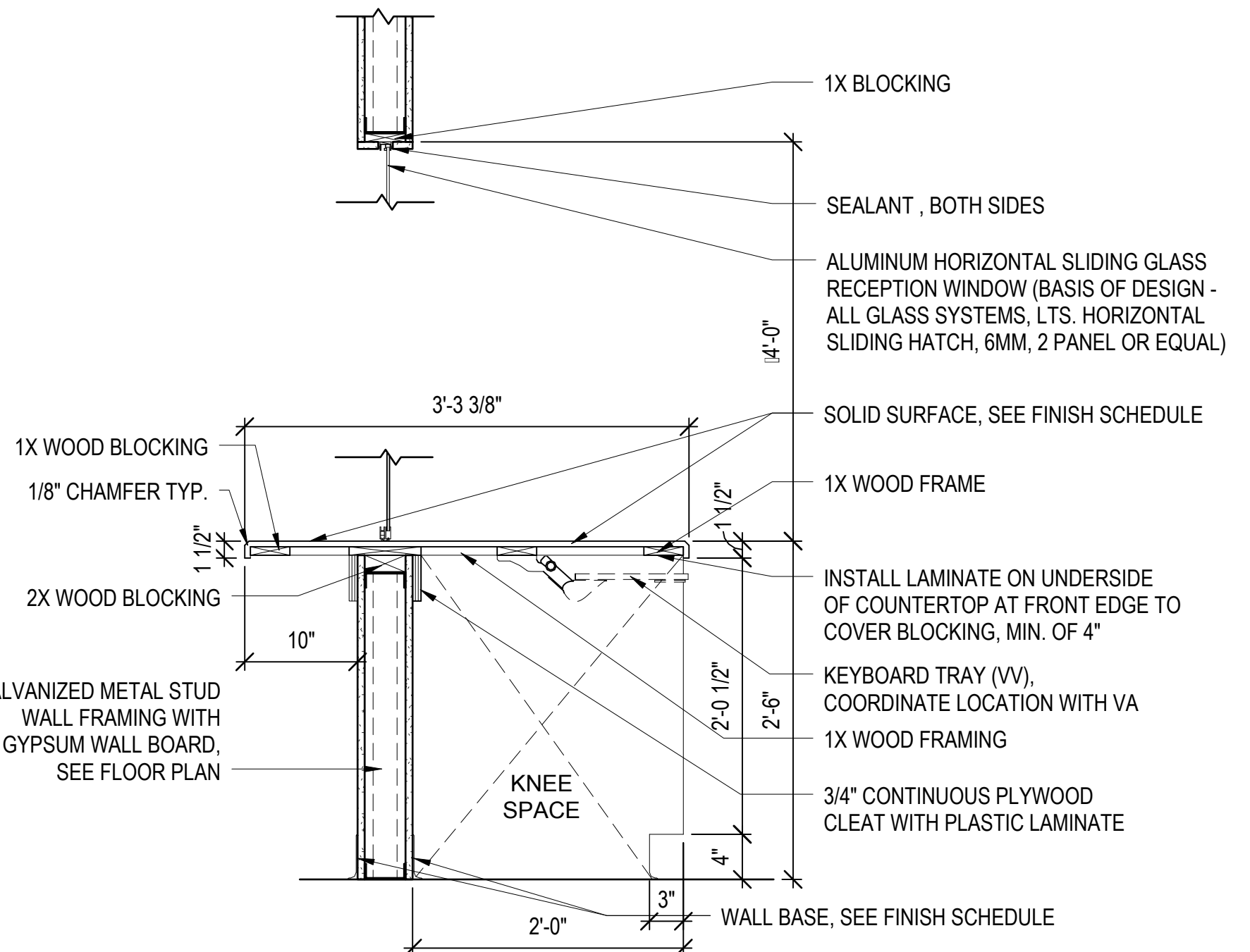


CASEWORK NOTES

1. ALL COUNTERTOPS AND BACKPLASHES ARE TO BE SOLID SURFACE WITH 1/8" CHAMFER AT EXPOSED EDGES, SEE FINISH SCHEDULE FOR COLOR.
2. ALL CABINET BODIES, DOORS AND DRAWERS TO BE PLASTIC LAMINATE PANELS, SEE FINISH SCHEDULE FOR COLOR.
3. ALL ADJUSTABLE SHELVES TO BE PLASTIC LAMINATE ON ADJUSTABLE SHELF STANDARDS.
4. REFER TO SPEC SECTION 12 32 00 AND 06 61 16 FOR SPECIFICATIONS FOR BUILT-IN CASEWORK SHOWN ON THIS DRAWING.
5. ALL CABINET PULLS TO BE 3" RECESSED PULLS, U.N.O.
6. PROVIDE BLOCKING IN WALL FOR ATTACHMENT OF CABINETS.



CASEWORK SECTION - RECEPTION CHECK-IN W/ WINDOW



FINAL SUBMISSION

CONSULTANTS:

Civil:
KENNETH HORNE & ASSOCIATES
7201 NORTH 9TH AVENUE, STE. 6
PENSACOLA, FLORIDA 32504
PH: (850) 471-9095
FX: (850) 471-9093

COMMENTS:
SCHMIDT CONSULTING GROUP, INC.
139 EAST GOVERNMENT STREET
PENSACOLA, FLORIDA 32502
PH: (850) 438-0050
FX: (850) 432-8611

SURVEYORS:
KCI TECHNOLOGIES, INC.
10401 HIGHLAND MANOR DRIVE, SUITE 120
TAMPA, FLORIDA 33618
PH: (813) 740-2300

LANDSCAPE ARCHITECT:
CSA GROUP, INC.
6300 PICCADILLY SQUARE DRIVE
MOBILE, ALABAMA 36689
PH: (251) 344-4023
FX: (251) 344-4022

ARCHITECTURE:
BULLOCK TICE ASSOCIATES, INC.
909 EAST CERVANTES STREET
PENSACOLA, FL 32501
PH: (850) 434-5444
FX: (850) 432-8208

ARCHITECT/ENGINEERS:



BES DESIGN/BUILD, LLC
766 Middle St, Fairhope, AL 36532
Phone: 251.990.5778 Fax: 251.990.3716



Drawing Title
CASEWORK SECTIONS

Approved: Project Director

Project Title
PANAMA CITY
JOINT OUTPATIENT CLINIC
VA GULF COAST HEALTH CARE

Location
PANAMA CITY, FLORIDA

Date
MARCH 2012

Checked
BM

Drawn
TWMF

Project Number
520-326
Building Number
-
Drawing Number
AS457
Dwg. 35 of 42

Office of
Construction
and Facilities
Management

