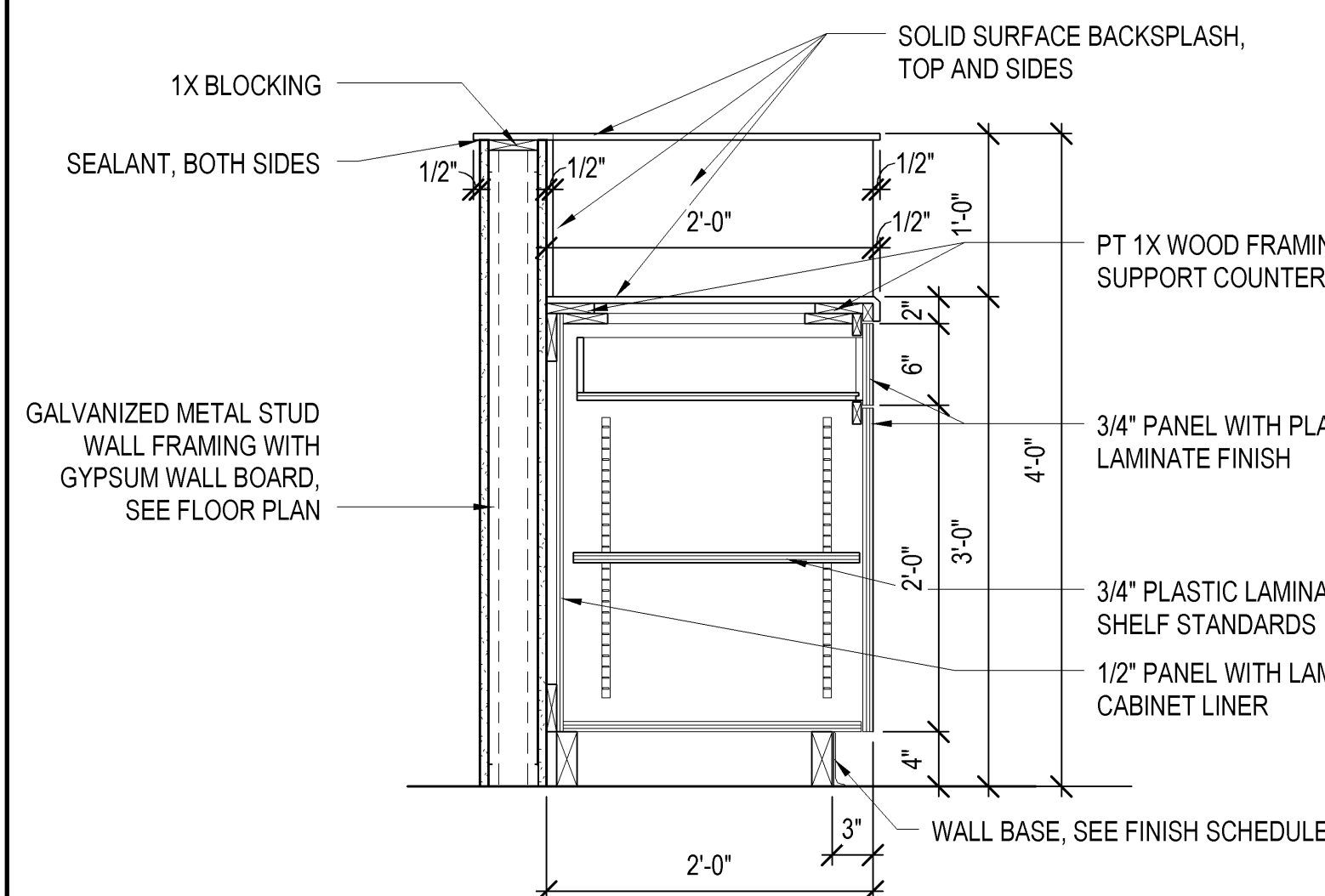
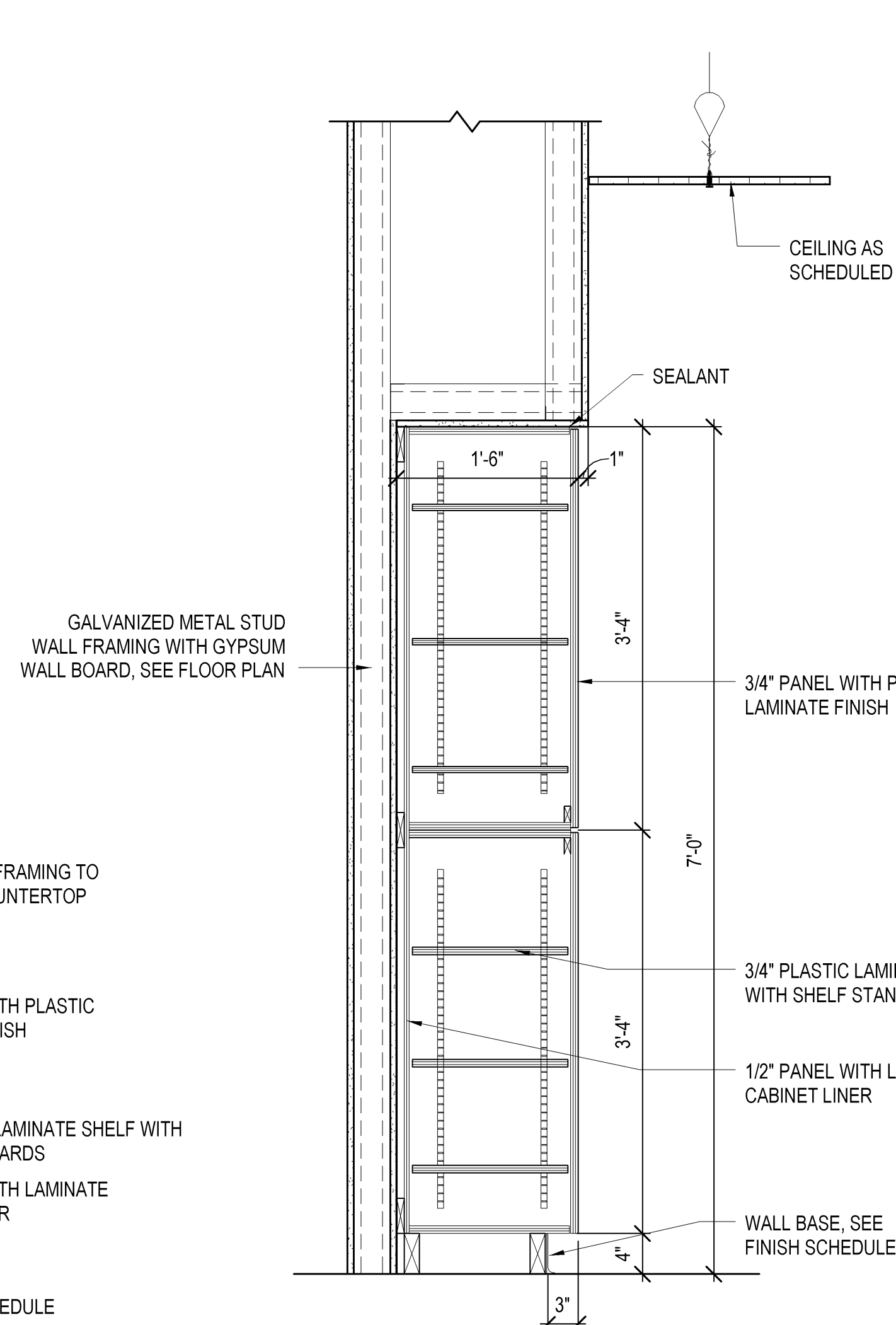


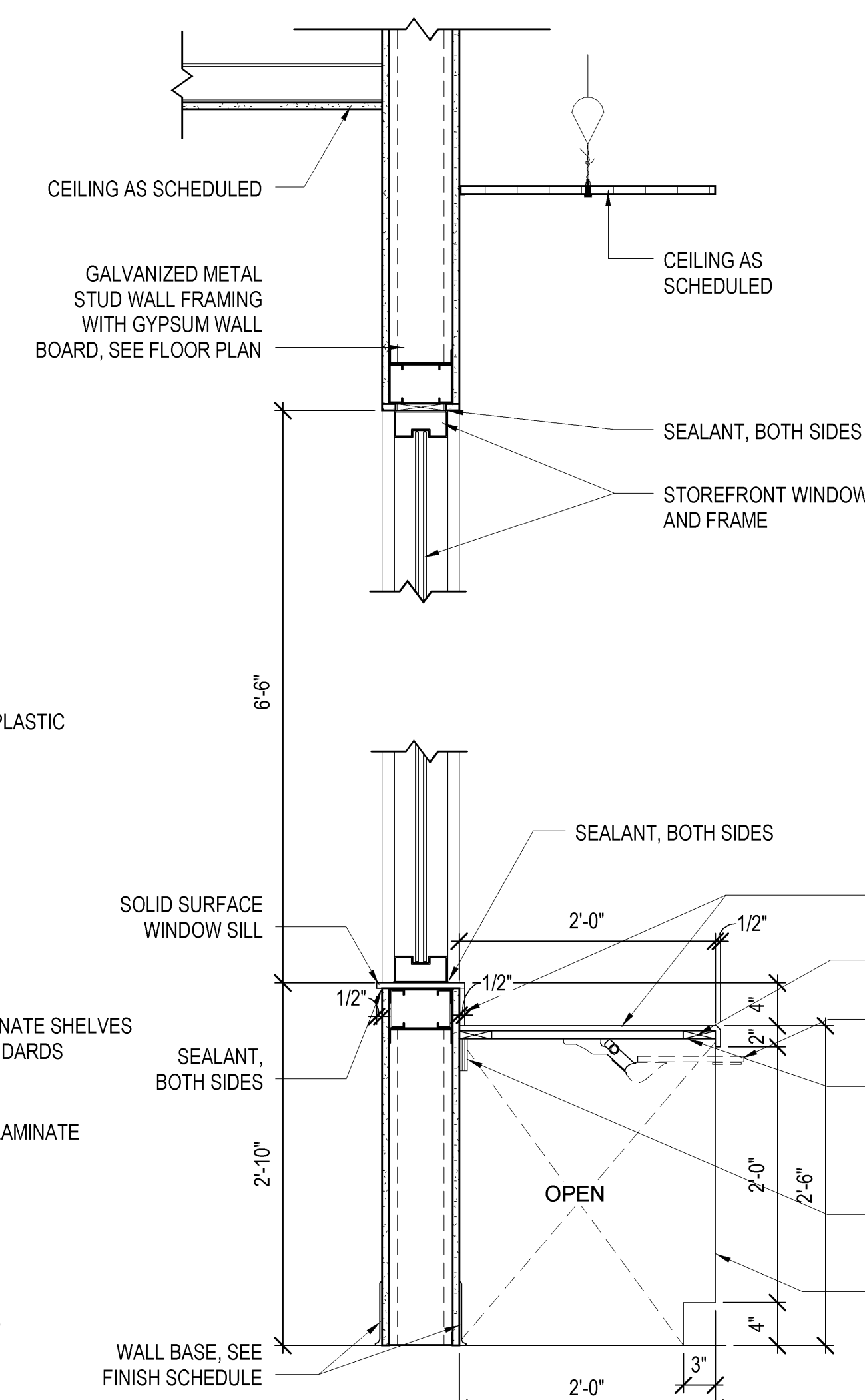
1. ALL COUNTERTOPS AND BACKSPASHES ARE TO BE SOLID SURFACE WITH 1/8" CHAMFER AT EXPOSED EDGES, SEE FINISH SCHEDULE FOR COLOR.
2. ALL CABINET BODIES, DOORS AND DRAWERS TO BE PLASTIC LAMINATE PANELS, SEE FINISH SCHEDULE FOR COLOR.
3. ALL ADJUSTABLE SHELVES TO BE PLASTIC LAMINATE ON ADJUSTABLE SHELF STANDARDS.
4. REFER TO SPEC SECTION 12 32 00 AND 06 61 16 FOR SPECIFICATIONS FOR BUILT-IN CASEWORK SHOWN ON THIS DRAWING.
5. ALL CABINET PULLS TO BE 3" RECESSED PULLS, U.N.O.
6. PROVIDE BLOCKING IN WALL FOR ATTACHMENT OF CABINETS.



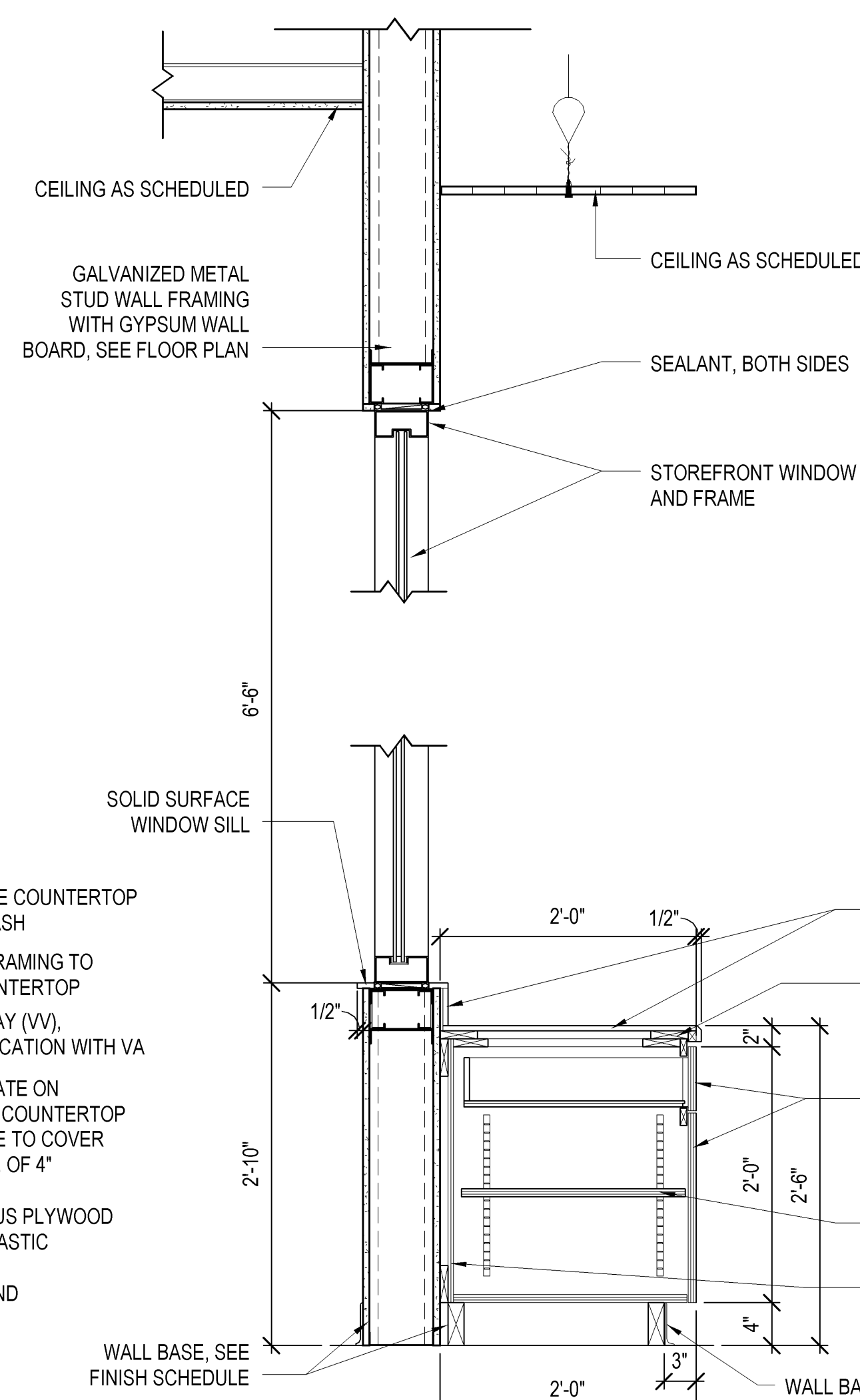
1 CASEWORK SECTION - BLOOD COLL. A
AS458 1" = 1'-0"



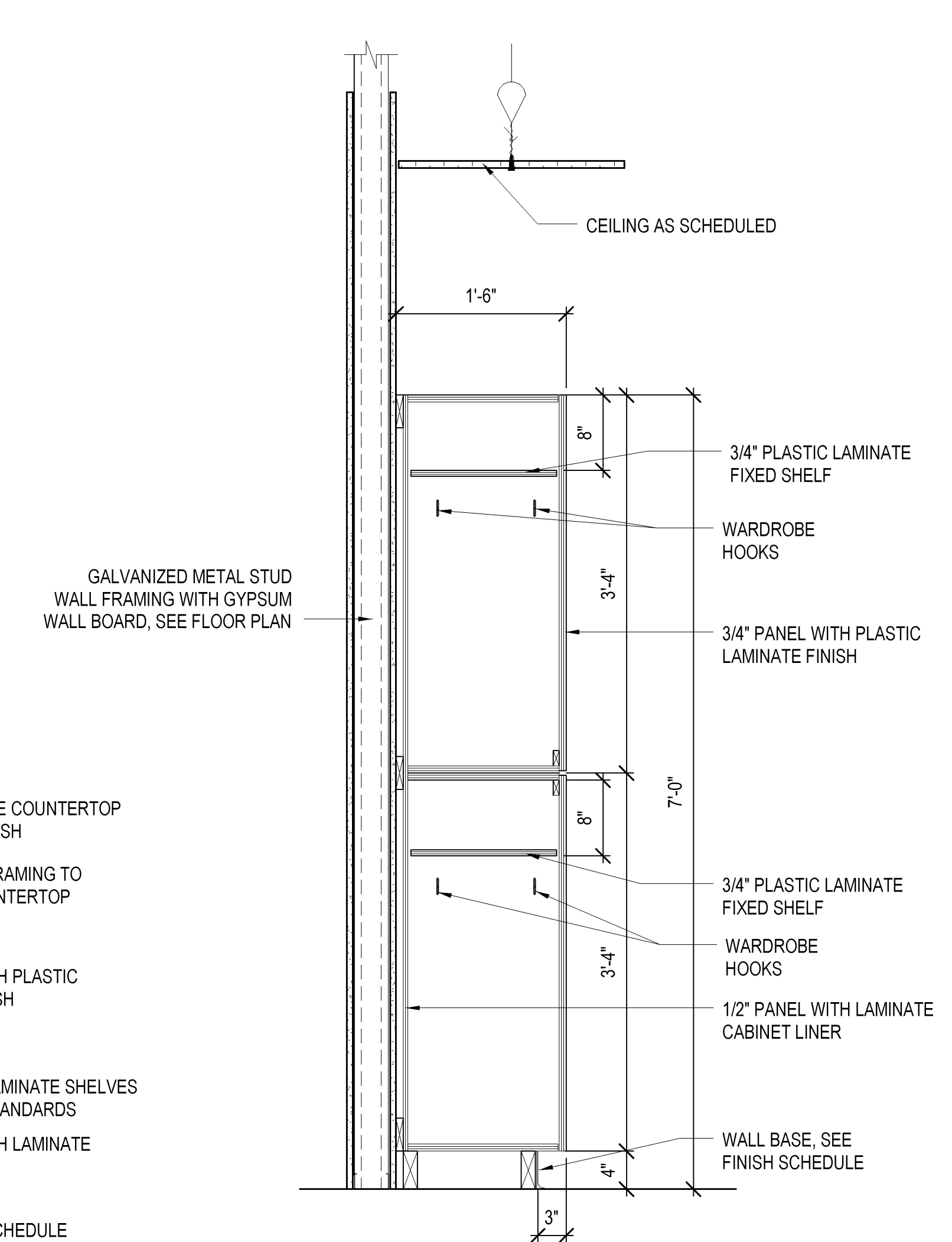
2 CASEWORK SECTION - BLOOD COLL.B
AS458 1" = 1'-0"



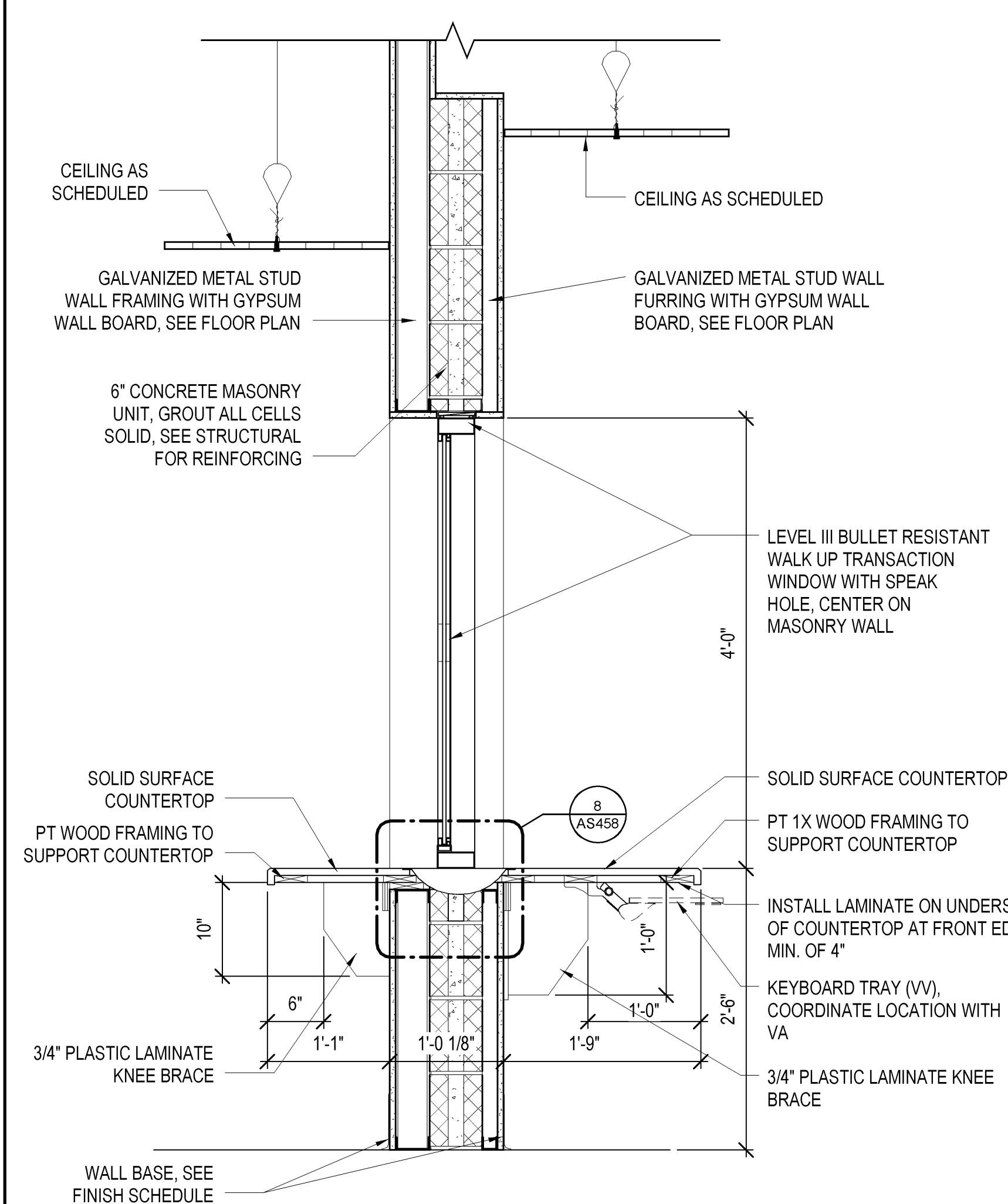
3 CASEWORK SECTION - SECURITY A
AS458 1" = 1'-0"



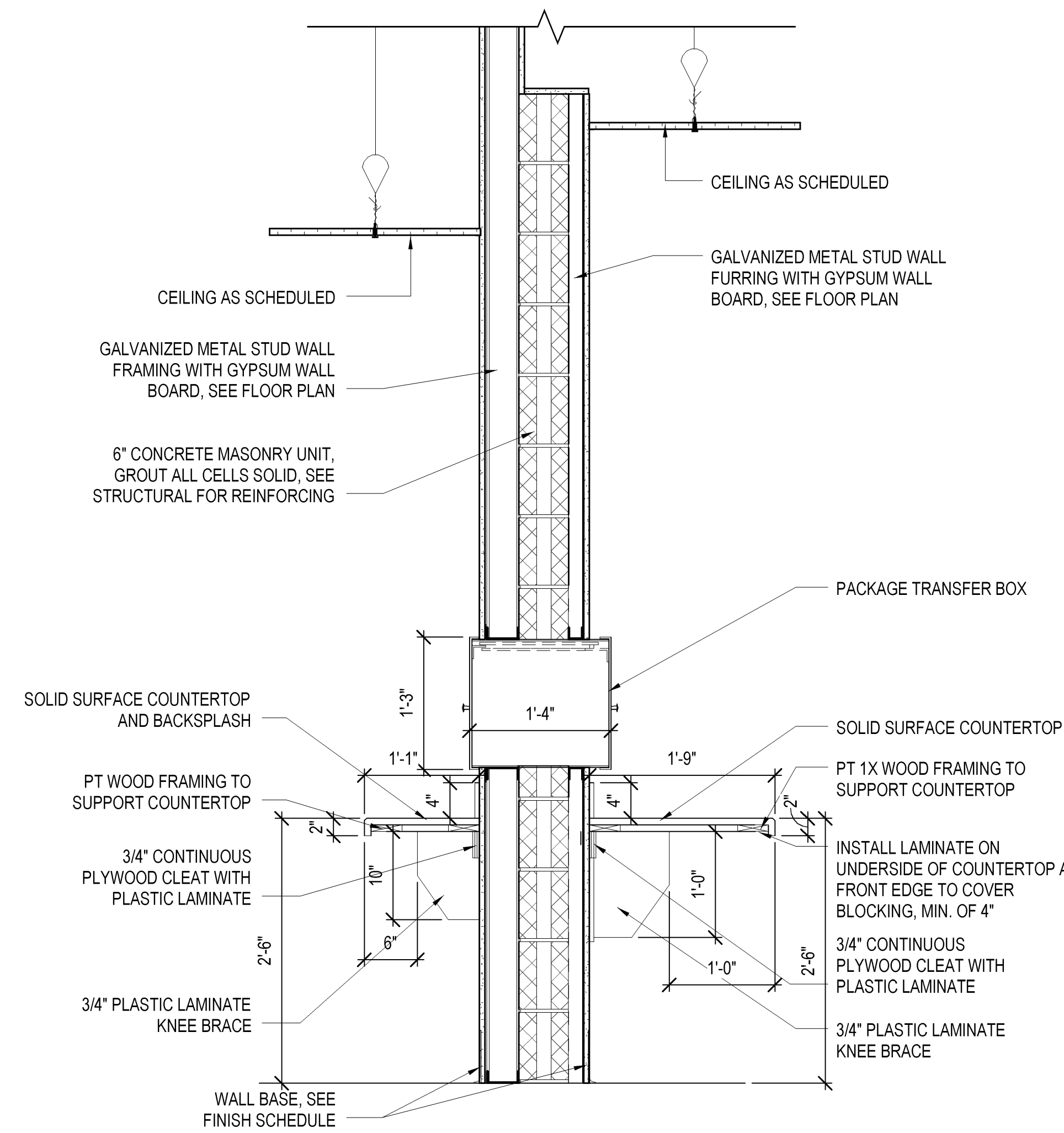
4 CASEWORK SECTION - SECURITY B
AS458 1" = 1'-0"



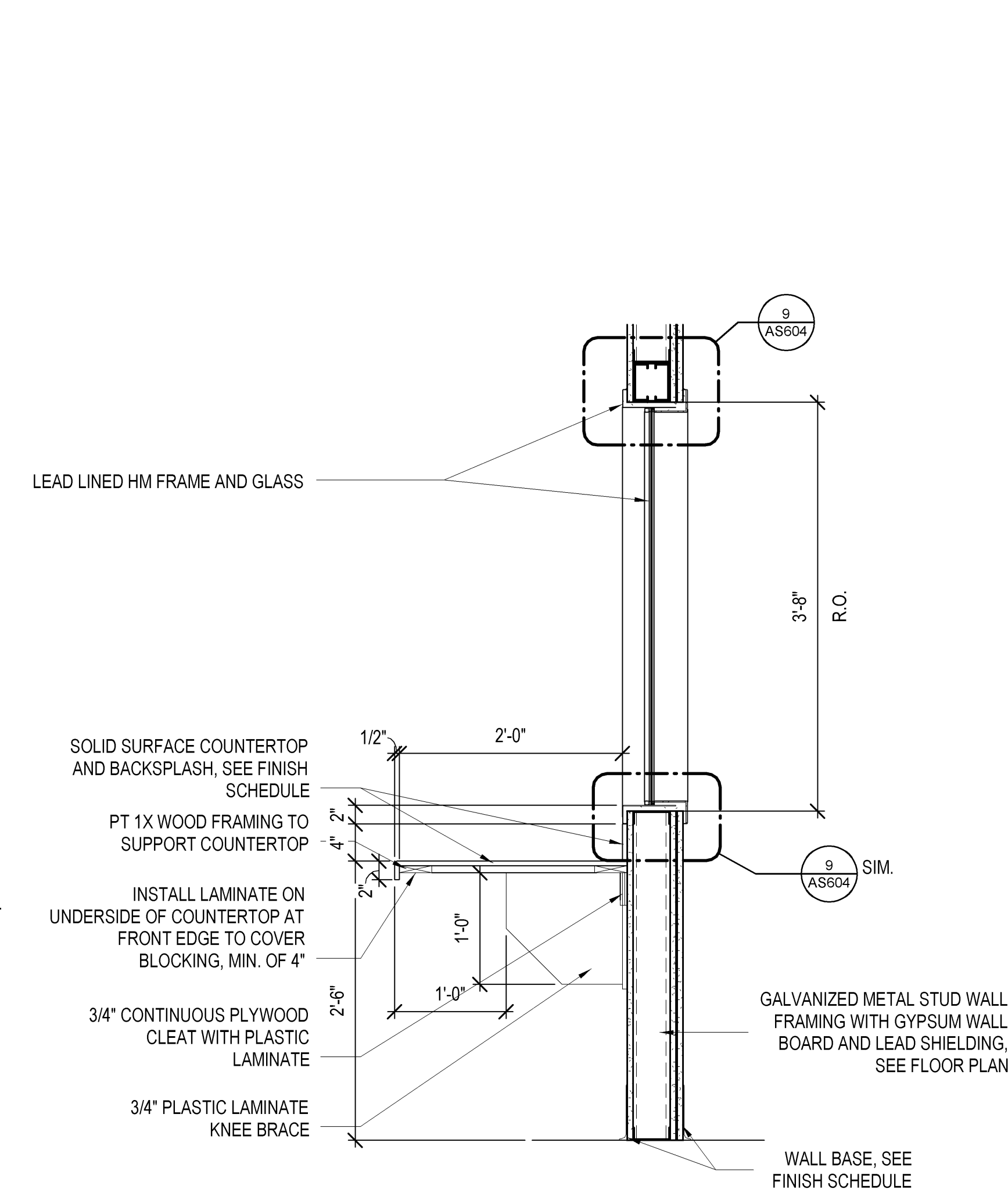
CASEWORK SECTION - RAD. DRESSING AREA



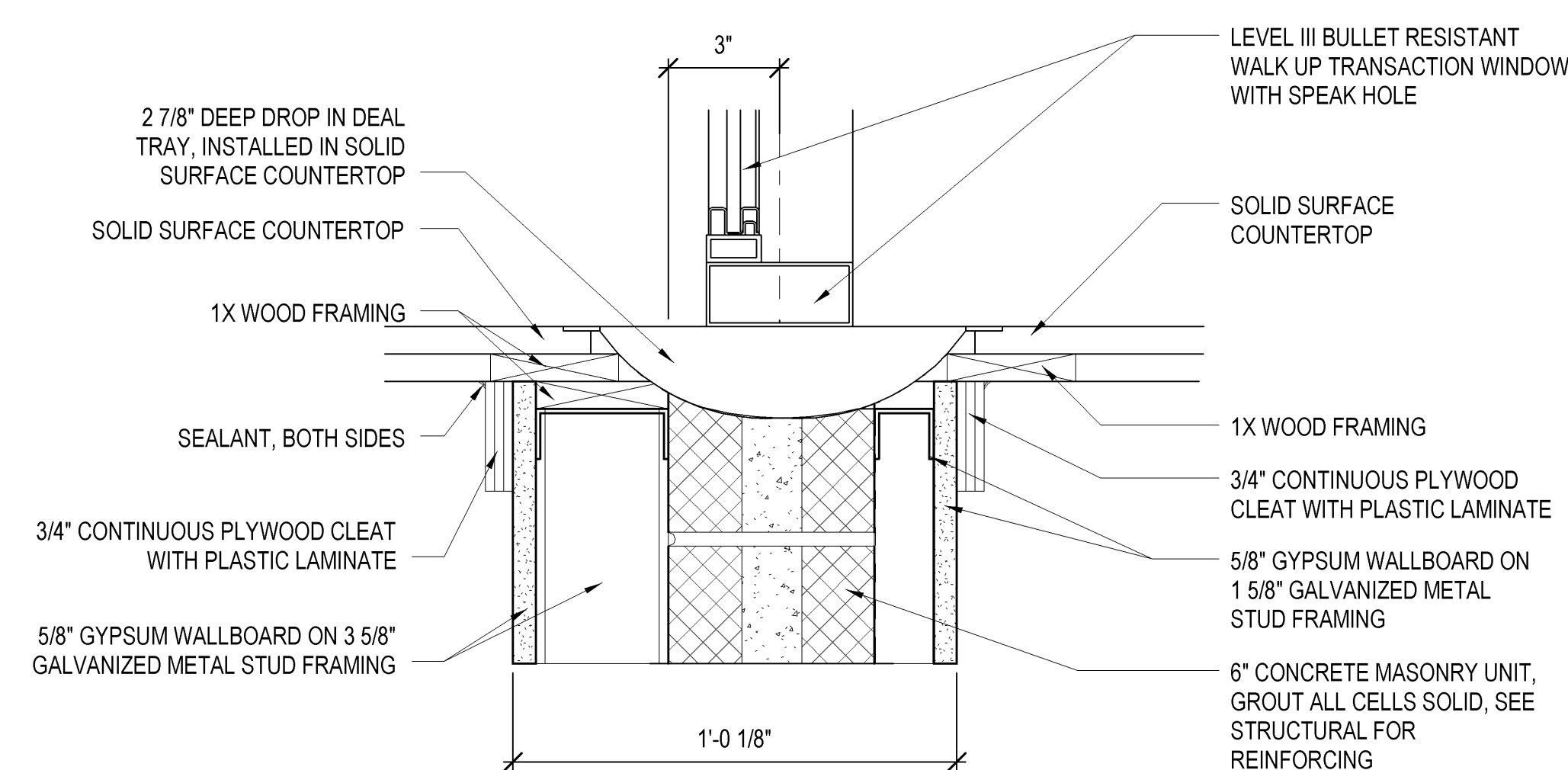

CASEWORK SECTION - PHARMACY WINDOW
 1" = 1'-0"



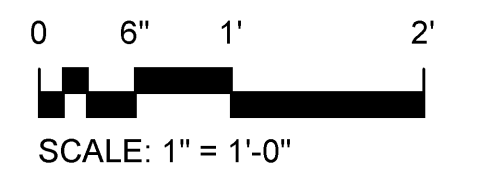
6 CASEWORK SECTION - PHARMACY TRANSFER BOX
AS458 1" = 1'-0"



7 CASEWORK SECTION - RADIOLOGY
AS458 1" = 1'-0"



SECTION - PHARMACY WINDOW DEAL TRAY

[illegible]

FINAL SUBMISSION

Office of
Construction
and Facilities
Management

Department of
Veterans Affairs