

1
2
3
4
5
6
7
8
9

three inches = one foot
one and one half inches = one foot
one inch = one foot
three quarters inch = one foot
one half inch = one foot
one quarter inch = one foot
one eighth inch = one foot
one sixteenth inch = one foot

3/26/2012 10:03:42 AM
D:_MAC2012\roberta13271-01_BES_JOPC_walls.rvt

A

B

C

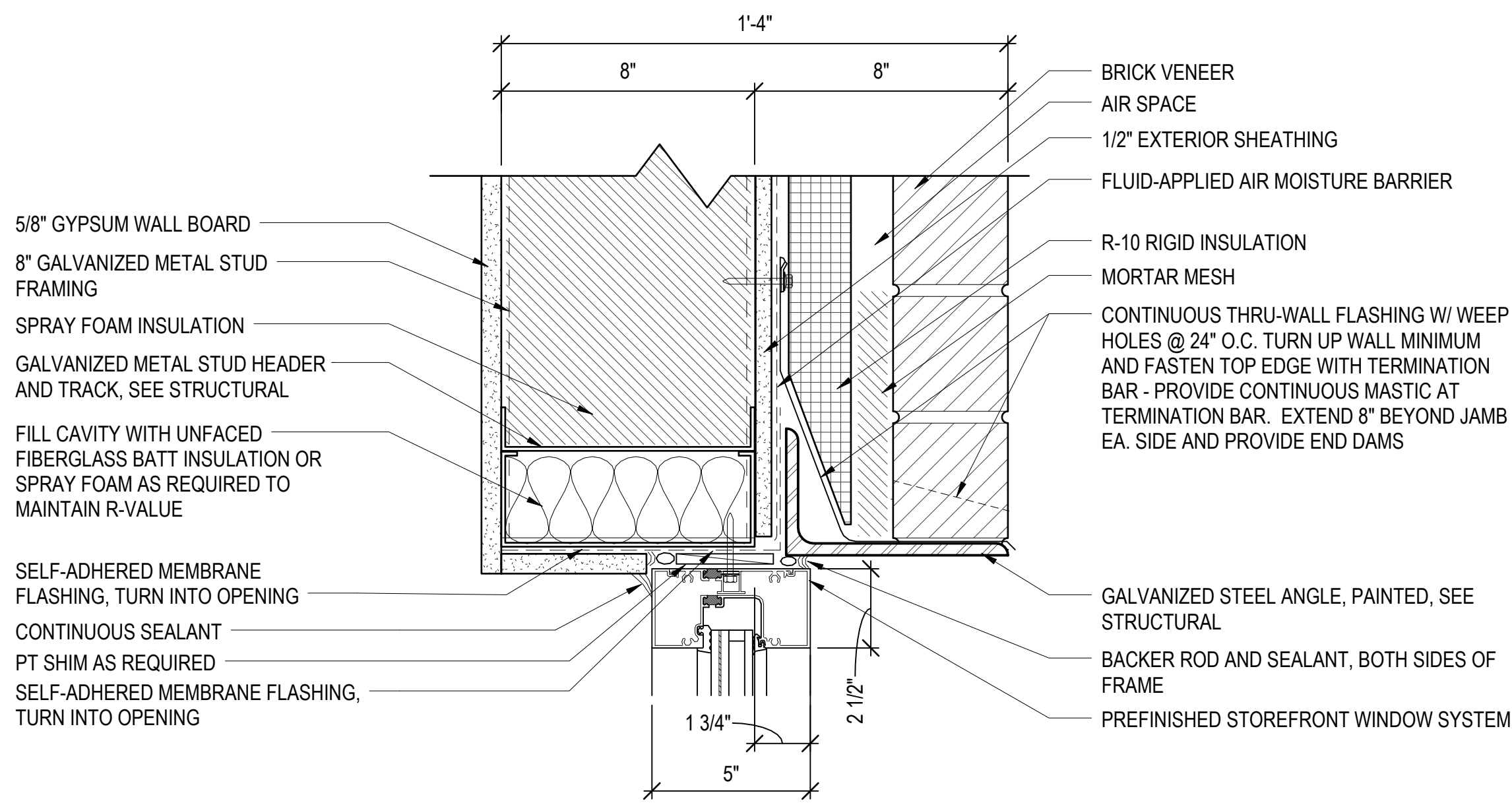
D

E

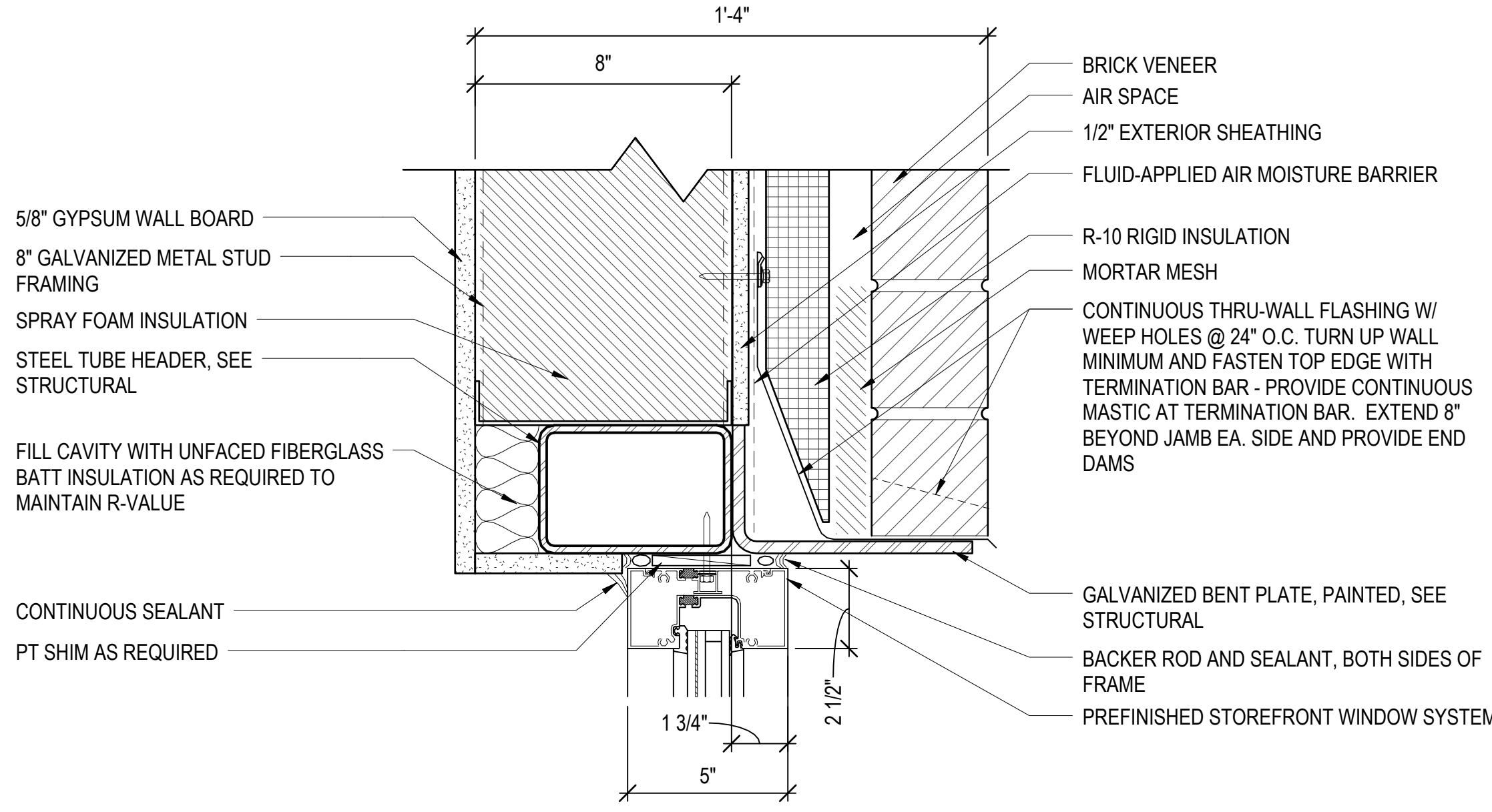
F

F

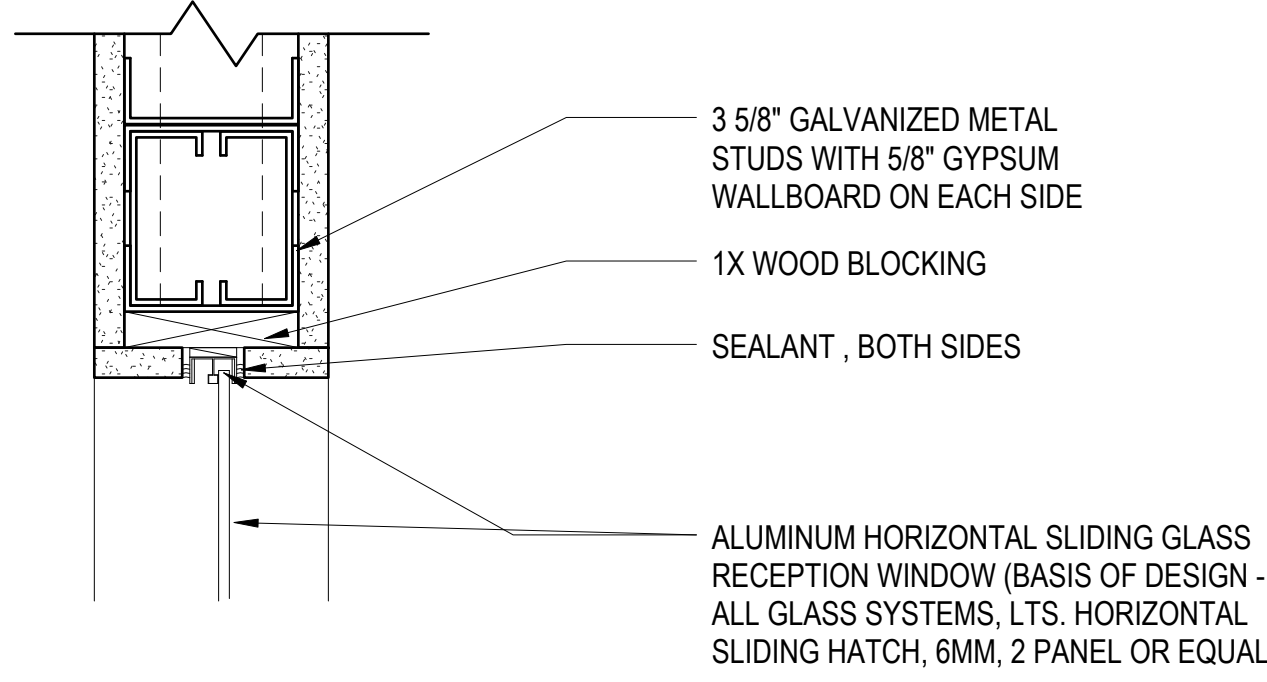
F



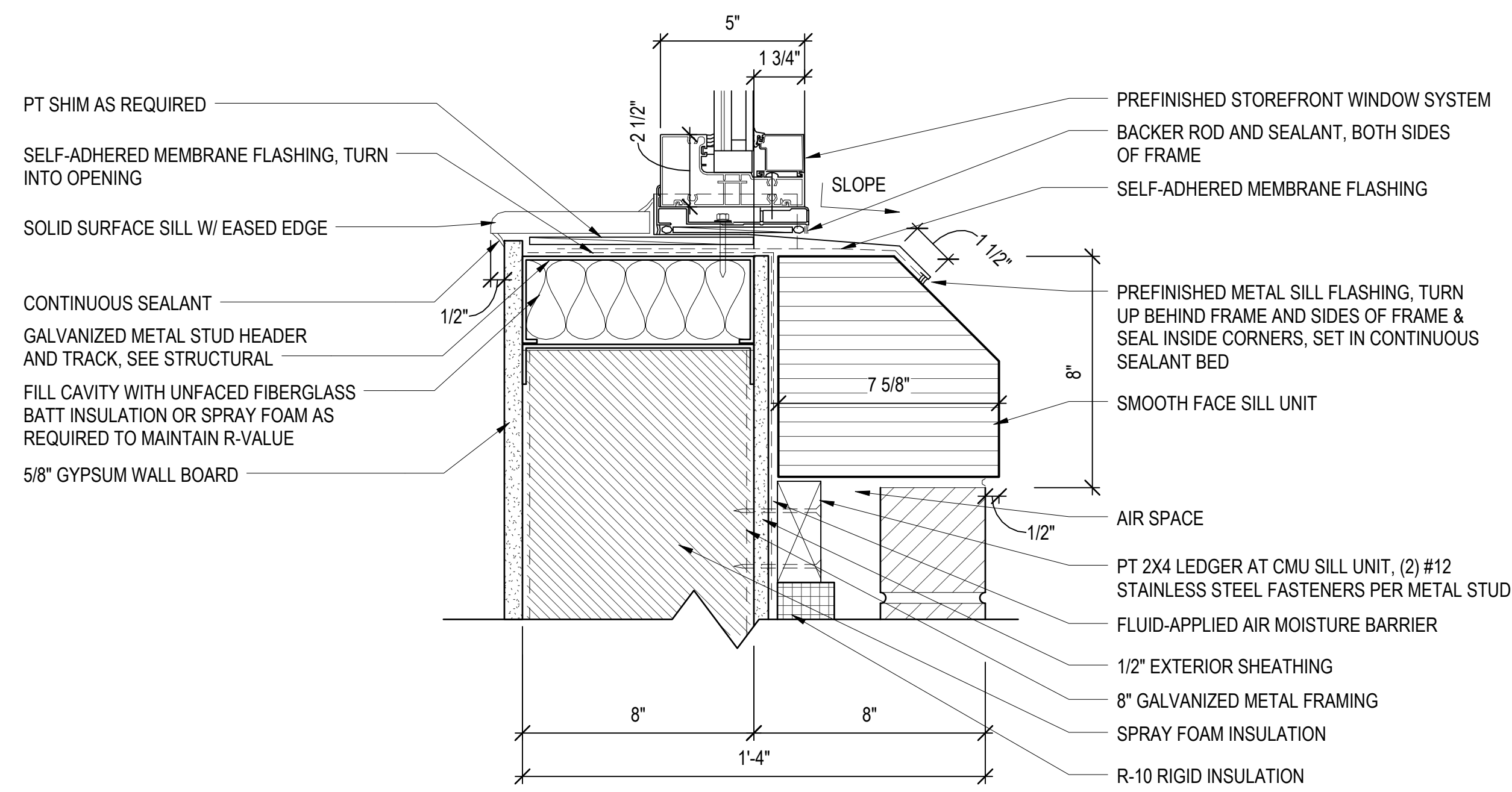
1 S.F. HEAD DETAIL
AS604 3" = 1'-0"



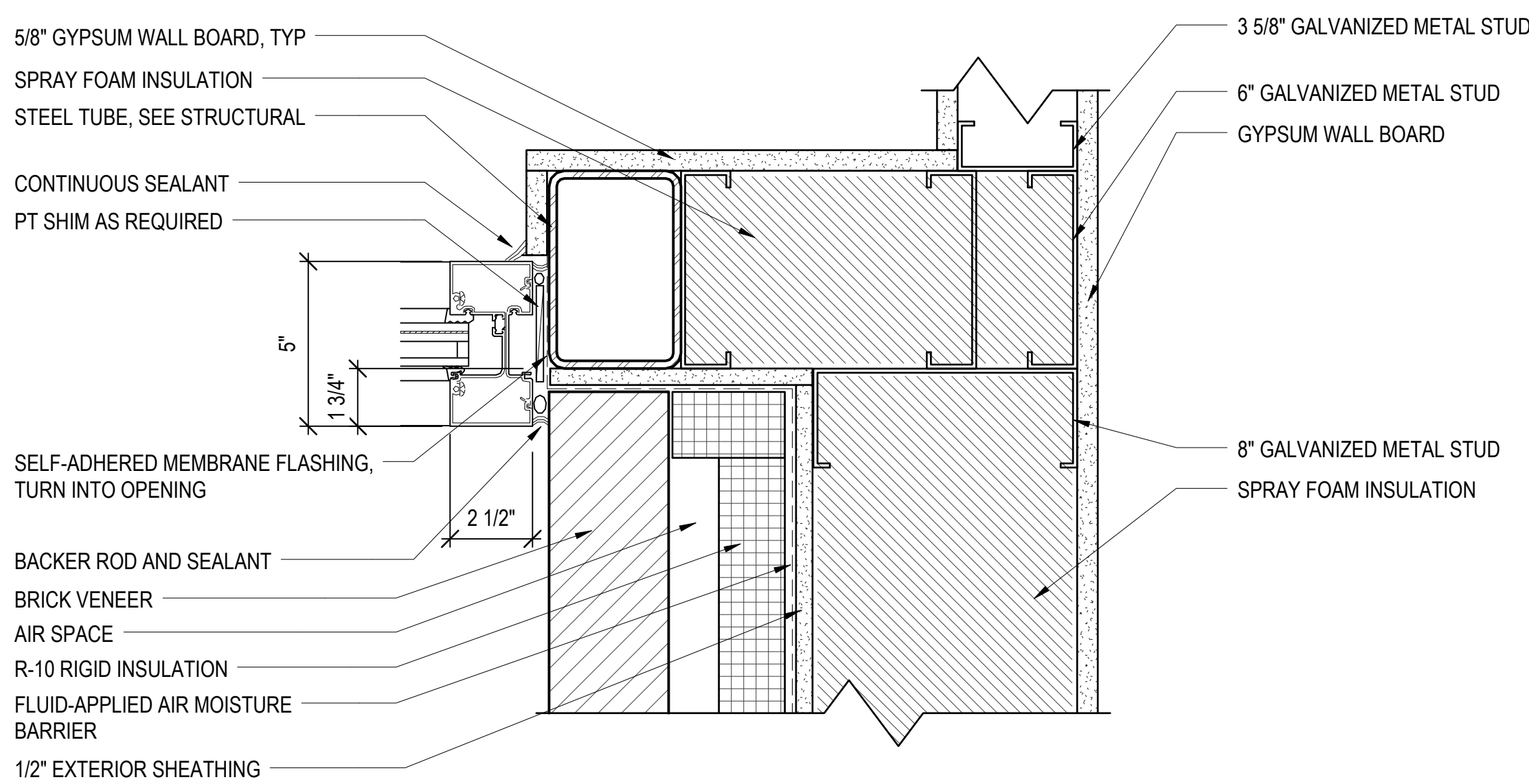
4 S.F. HEAD DETAIL (AT STEEL TUBE)
AS604 3" = 1'-0"



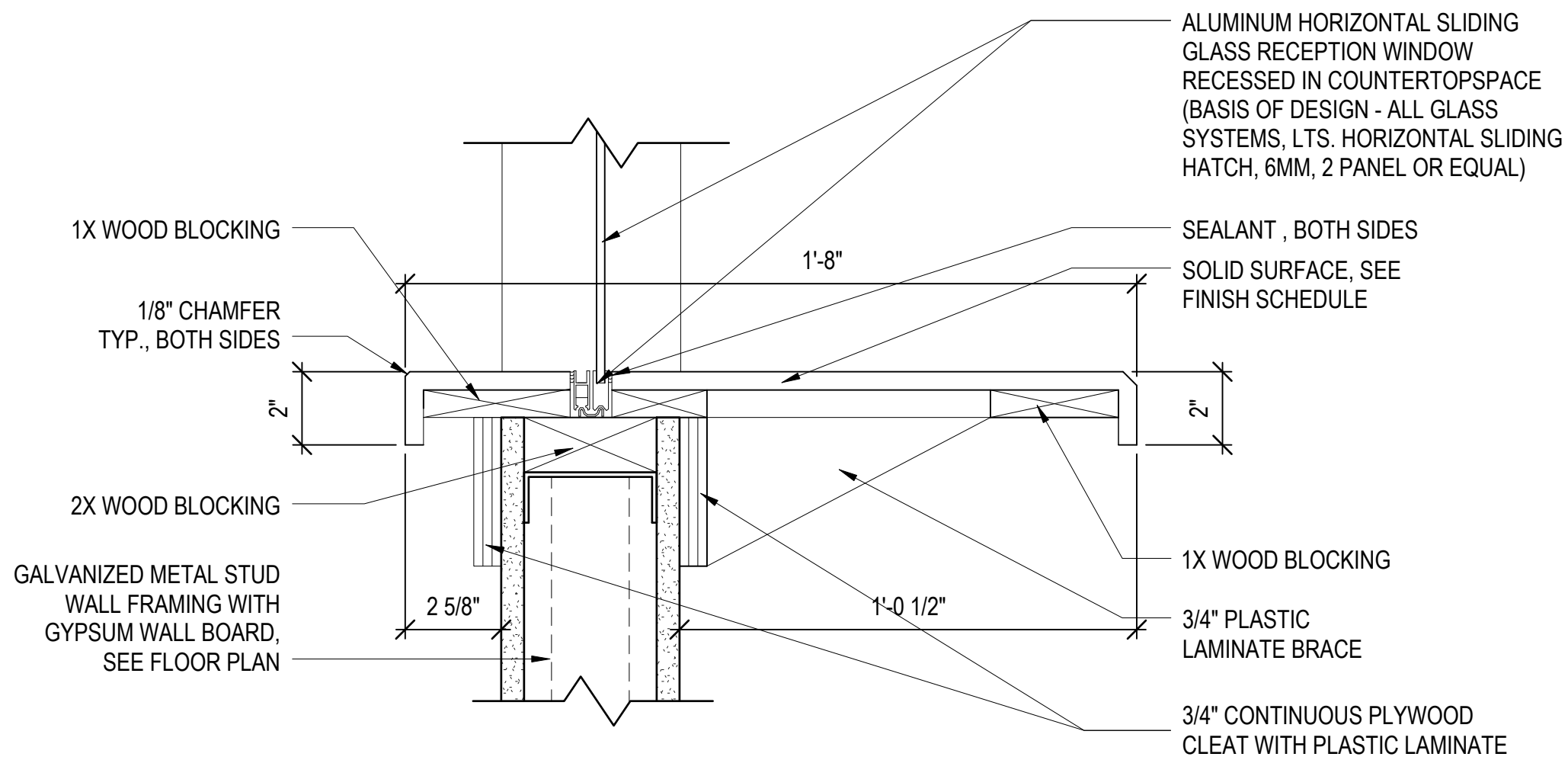
7 LAB PASS THRU WINDOW HEAD
AS604 3" = 1'-0"



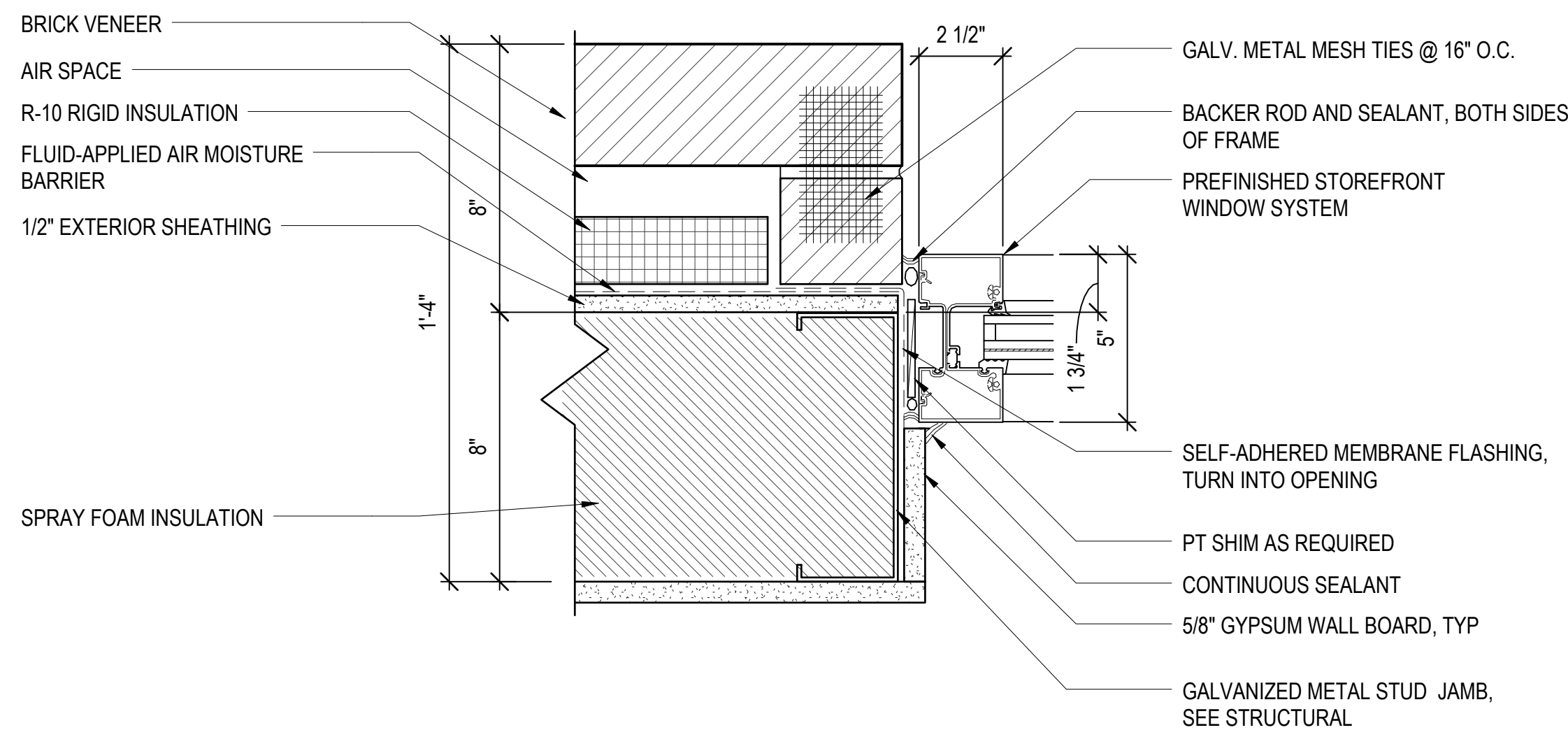
2 S.F. SILL DETAIL
AS604 3" = 1'-0"



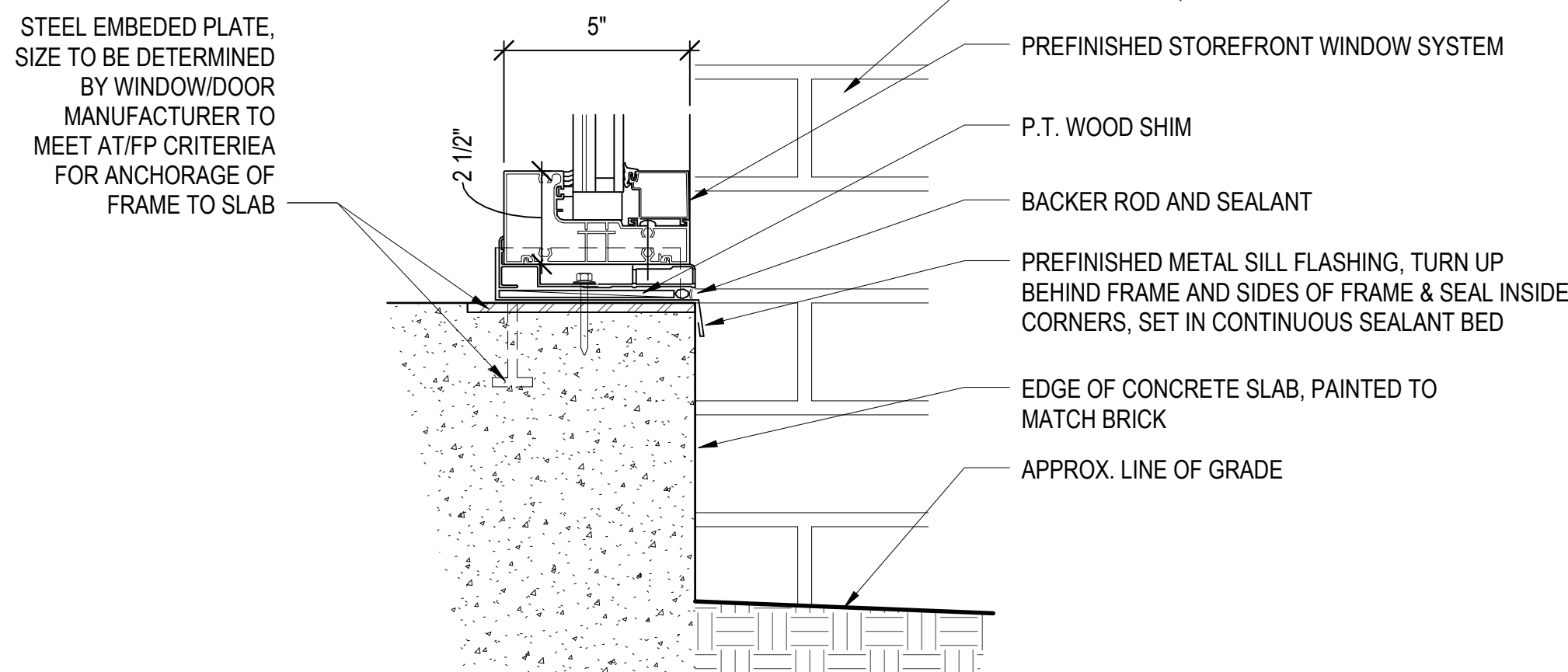
5 S.F. JAMB DETAIL (AT STEEL TUBE - NO WALL RETURN)
AS604 3" = 1'-0"



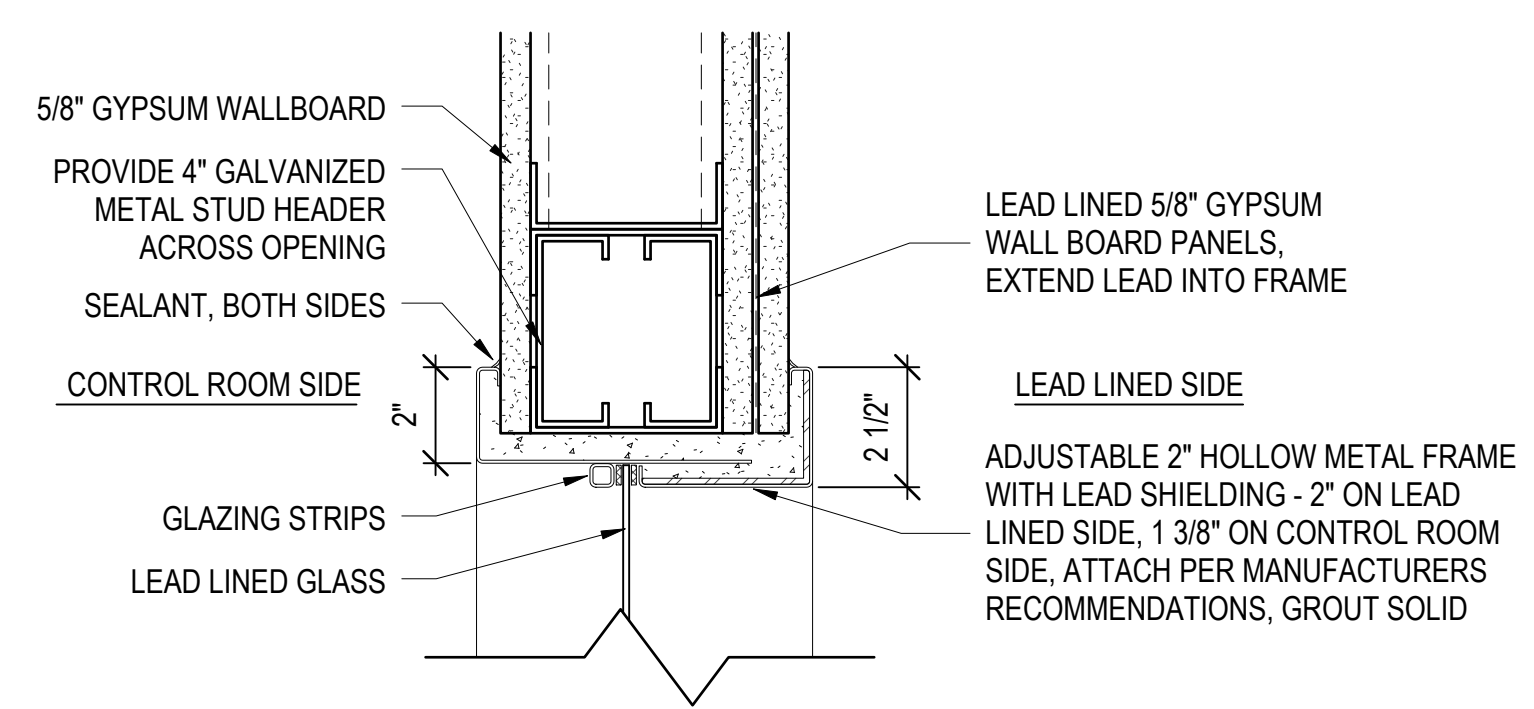
8 LAB PASS THRU WINDOW SILL
AS604 3" = 1'-0"



3 S.F. JAMB DETAIL
AS604 3" = 1'-0"



6 REGULAR S.F. SILL DETAIL
AS604 3" = 1'-0"



9 LEAD LINED WINDOW HEAD DETAIL (JAMB AND SILL SIMILAR)
AS604 3" = 1'-0"

0 2" 4" 8"
SCALE: 3" = 1'-0"

FINAL SUBMISSION

CONSULTANTS:			ARCHITECT/ENGINEERS:		Drawing Title WINDOW DETAILS	Project Title PANAMA CITY JOINT OUTPATIENT CLINIC VA GULF COAST HEALTH CARE	Project Number 520-326	Office of Construction and Facilities Management	
Civil: KENNETH HORNE & ASSOCIATES 7201 NORTH 9TH AVENUE, STE. 6 PENSACOLA, FLORIDA 32504 PH: (850) 471-9095 FX: (850) 471-0553	COMMENTS: SCHMIDT CONSULTING GROUP, INC. 139 EAST GOVERNMENT STREET PENSACOLA, FLORIDA 32202 PH: (850) 438-0050 FX: (850) 432-8611	SURVEYORS: KCI TECHNOLOGIES, INC. 10401 HIGHLAND MANOR DRIVE, SUITE 120 TAMPA, FLORIDA 33610 PH: (813) 740-2300	BES DESIGN/BUILD, LLC 766 Middle St, Fairhope, AL 36532 Phone: 251.990.5778 Fax: 251.990.3716		Approved: Project Director	Location PANAMA CITY, FLORIDA	Building Number -		
LANDSCAPE ARCHITECT: CSA GROUP, INC. 6300 PICCADILLY SQUARE DRIVE MOBILE, ALABAMA 36689 PH: (251) 344-4023 FX: (251) 344-4022	ARCHITECTURE: BULLOCK TICE ASSOCIATES, INC. 909 EAST CERVANTES STREET PENSACOLA, FL 32501 PH: (850) 434-5444 FX: (850) 432-8208		STATE OF FLORIDA POWER & MAGNIFICENCE 0013571 21 MARCH 2012 REGISTERED ARCHITECT			Date MARCH 2012	Checked BM	Drawn TWMF	Dwg. 41 of 42
Revisions:	Date								