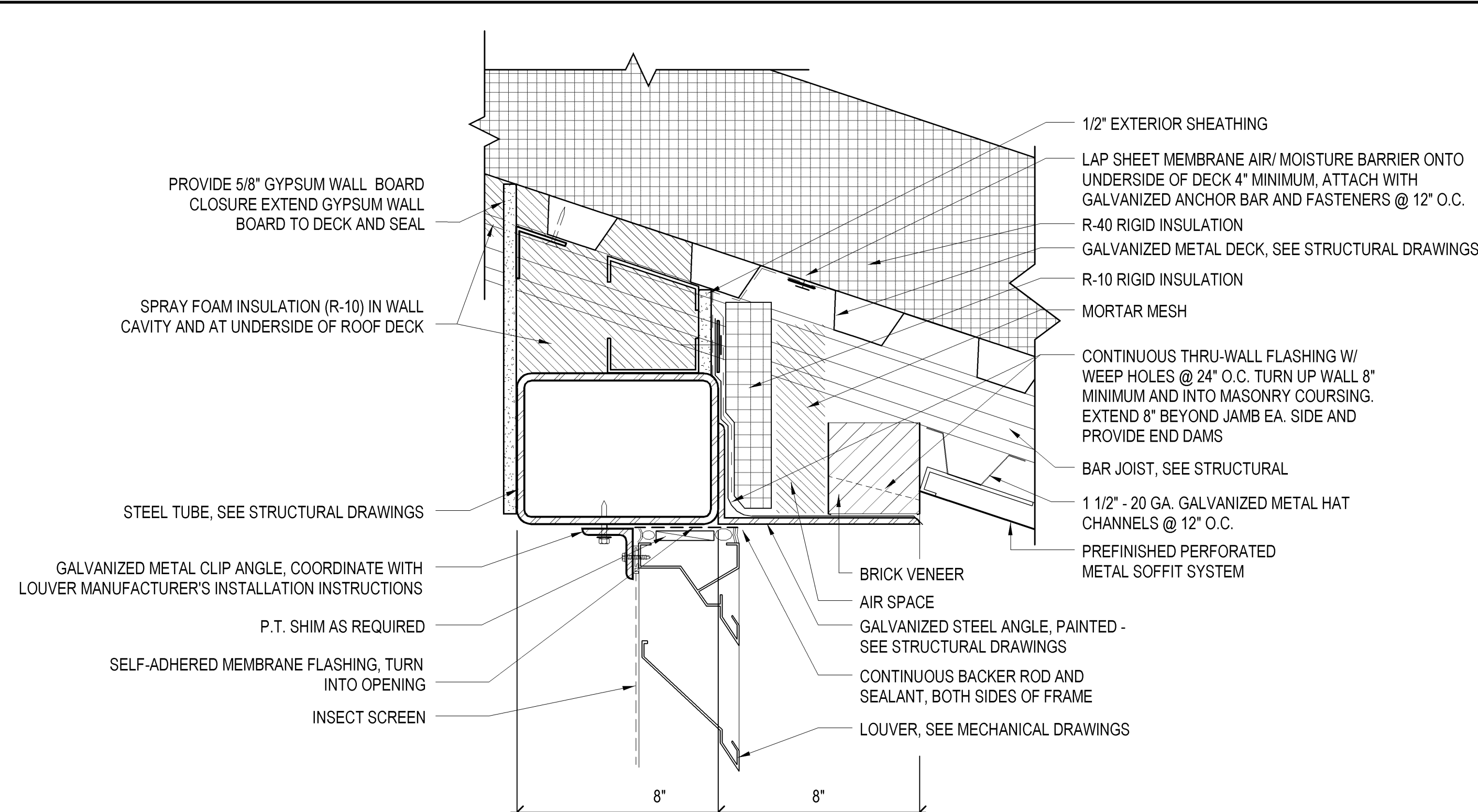
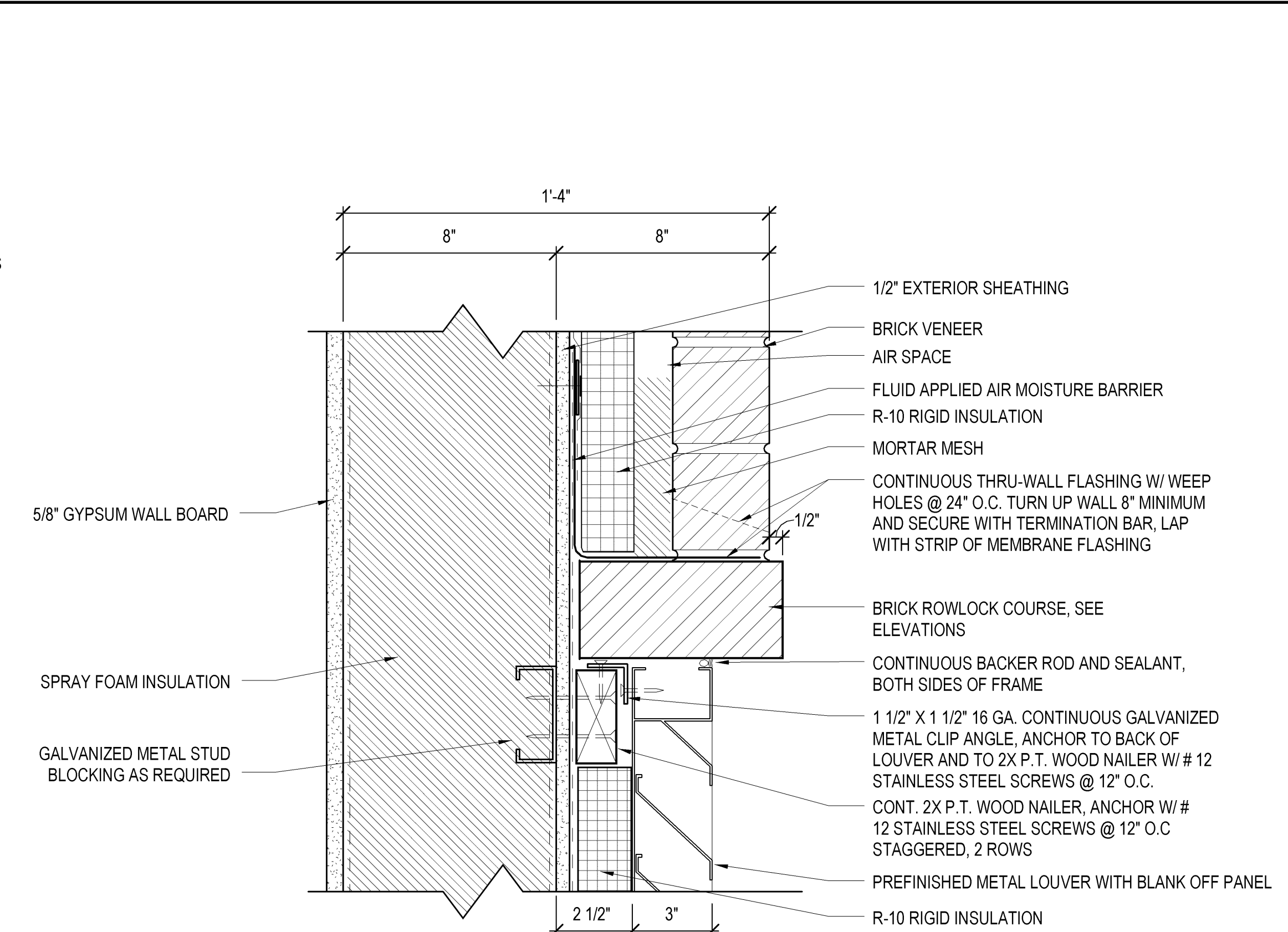


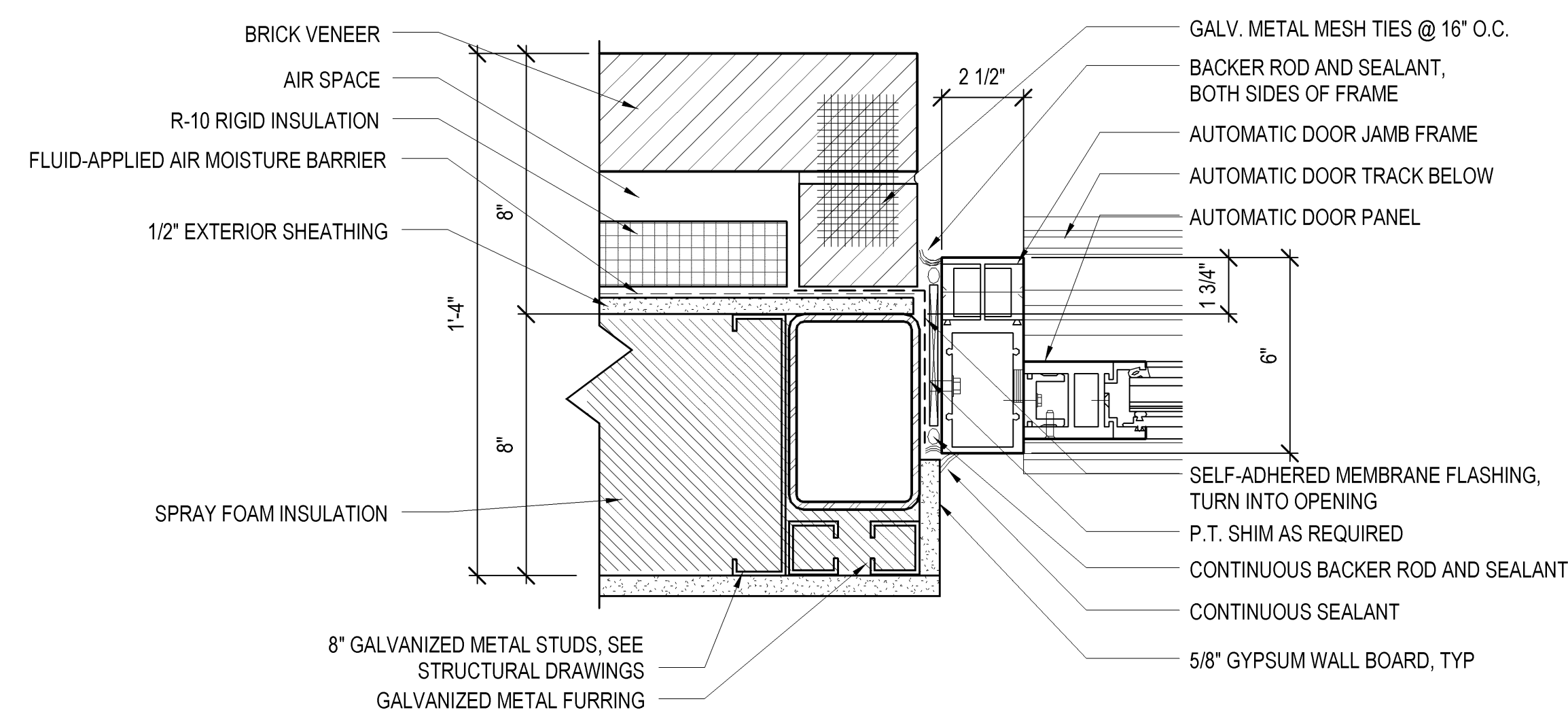
EXT. AUTOMATIC SLIDING DOOR HEAD/TRANSOM  
DETAIL



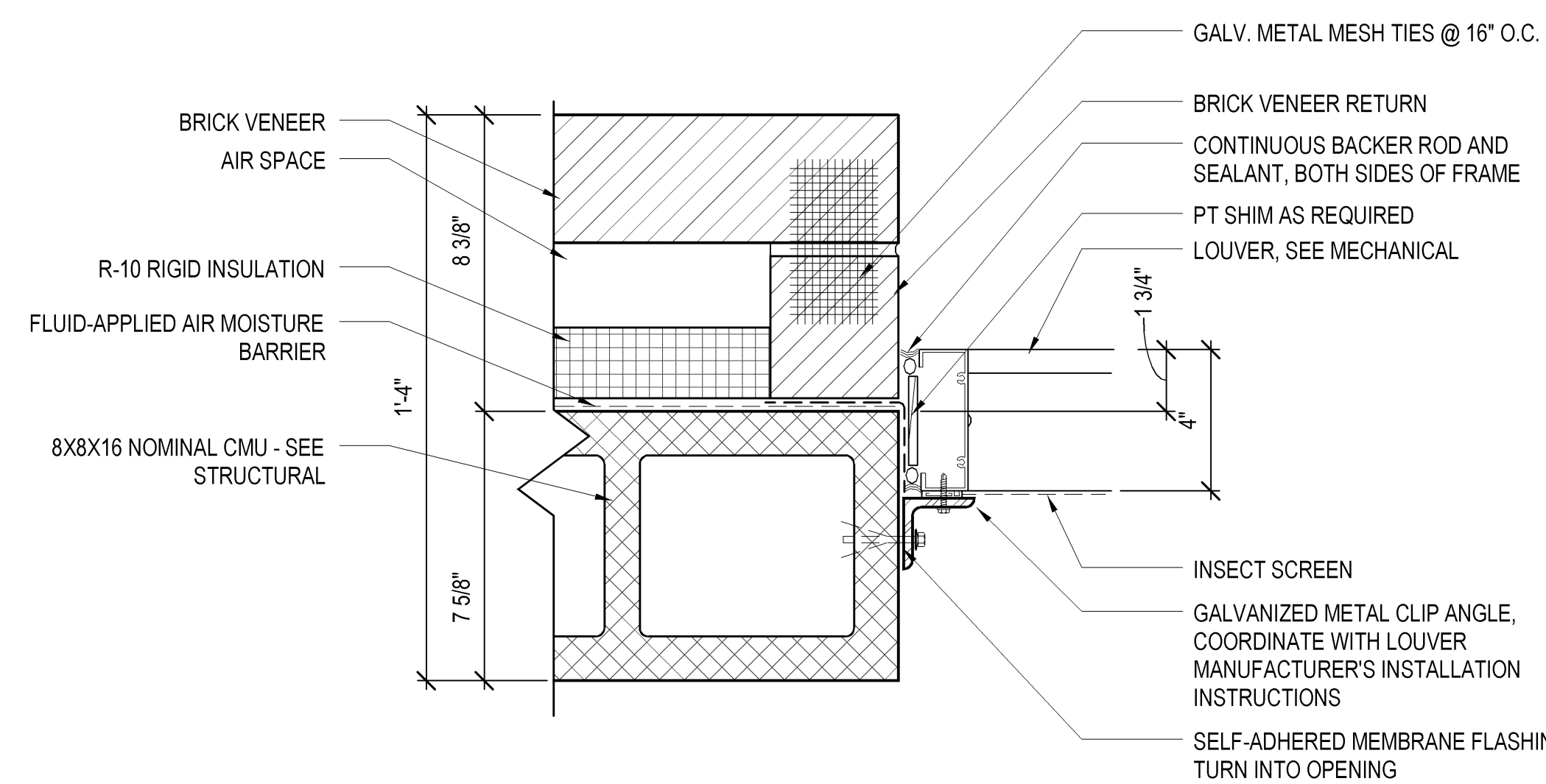
LOUVER HEAD - CMU WALL



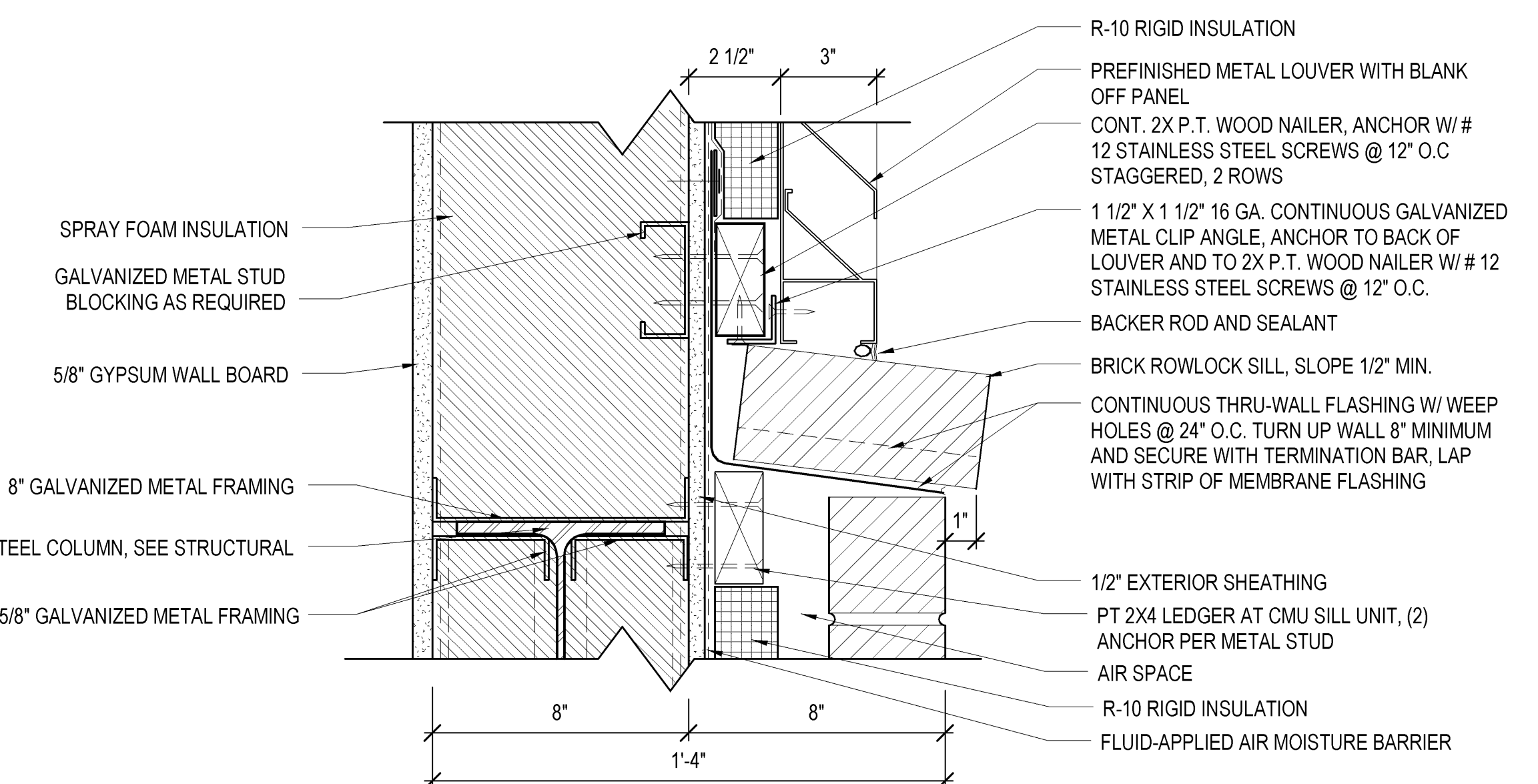
DECORATIVE LOUVER HEAD (JAMB SIM.)



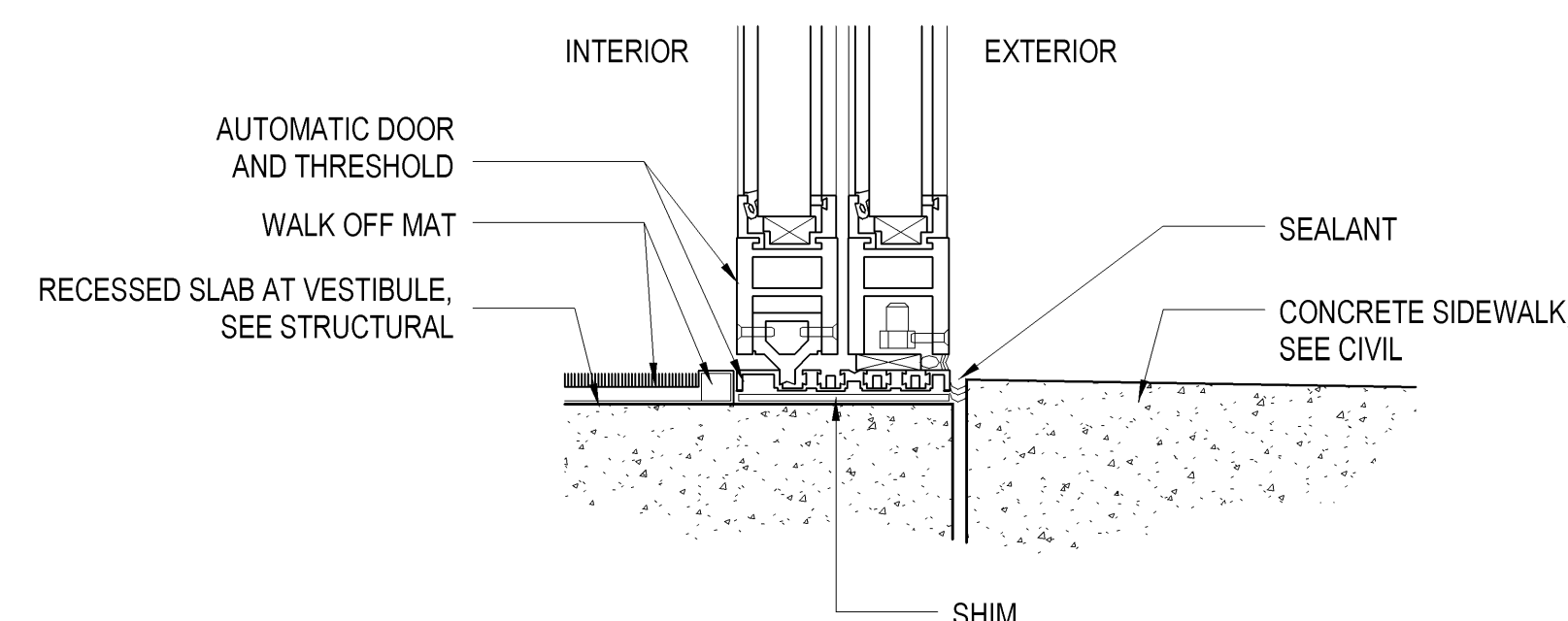
### EXT. AUTOMATIC SLIDING DOOR JAMB DETAIL



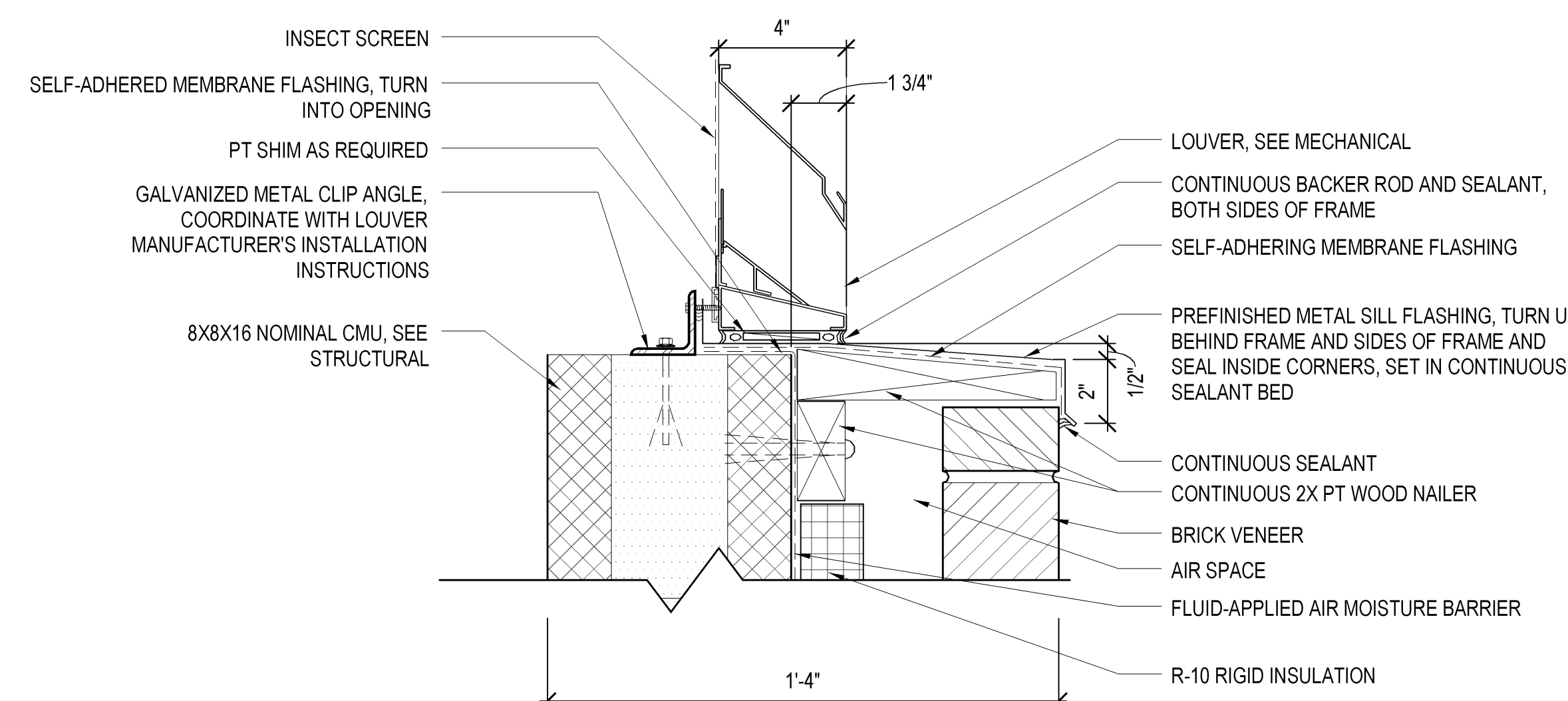
LOUVER JAMB - CMU WALL



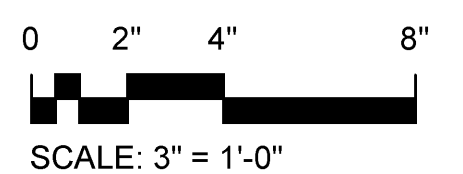
DECORATIVE LOUVER SILL






## EXT. AUTOMATIC SLIDING DOOR SILL DETAIL



6 LOUVER SILL - CMU WALL



		<h2>CONSULTANTS:</h2> <div> <div> <p>CIVIL: KENNETH HORNE &amp; ASSOCIATES 1201 NORTH 17TH AVENUE, SUITE 8 PENSACOLA, FLORIDA 32504 PH: (850) 471-0025 FX: (850) 471-0093</p> </div> <div> <p>COMMERCIAL: SCHMIDT CONSULTING GROUP, INC. 139 EAST GOVERNMENT STREET PENSACOLA, FLORIDA 32502 PH: (850) 438-0050 FX: (850) 432-8831</p> </div> <div> <p>SURVEYORS: KCI TECHNOLOGIES, INC. 5805 HIGHWAY AND MARINE DRIVE, SUITE 120 TAMPA, FLORIDA 33610 PH: (813) 742-2300</p> </div> </div> <div> <div> <p>LANDSCAPE ARCHITECT: CSA GROUP, INC. 6300 PICCADILLY SQUARE DRIVE MOBILE, ALABAMA 36609 PH: (251) 344-4023 FX: (251) 344-4032</p> </div> <div> <p>ARCHITECTURE: BULLOCK TICE ASSOCIATES, INC. 608 EAST CERVANTES STREET PENSACOLA, FL 32501 PH: (850) 424-5444 FX: (850) 432-0208</p> </div> </div>		<h2>ARCHITECT/ENGINEERS:</h2> <div> <div>  </div> <div>  </div> </div> <div> <p><b>BES DESIGN/BUILD, LLC</b> 766 Middle St, Fairhope, AL 36532 Phone: 251.990.5778 Fax: 251.990.3716</p> </div>		<div> <div> <p>Drawing Title <b>AUTOMATIC DOOR AND LOUVER DETAILS</b></p> </div> <div> <p>Approved: Project Director</p> </div> </div> <div> <div> <p>Project Number <b>PANAMA CITY JOINT OUTPATIENT CLINIC VA GULF COAST HEALTH CARE</b></p> </div> <div> <p>Location <b>PANAMA CITY, FLORIDA</b></p> </div> </div> <div> <div> <p>Date MARCH 2012</p> </div> <div> <p>Checked BM</p> </div> <div> <p>Drawn TWMF</p> </div> </div>		<div> <div> <p>Project Title <b>PANAMA CITY JOINT OUTPATIENT CLINIC VA GULF COAST HEALTH CARE</b></p> </div> <div> <p>Location <b>PANAMA CITY, FLORIDA</b></p> </div> </div> <div> <div> <p>Project Number <b>520-326</b></p> </div> <div> <p>Building Number -</p> </div> </div> <div> <div> <p>Drawing Number <b>AS605</b></p> </div> <div> <p>Dwg 42 of 42</p> </div> </div>		<div> <p>Office of Construction and Facilities Management</p>  <p>Department of Veterans Affairs</p> </div>	
<p>Revisions:</p>		<p>Date</p>									