

A

B

C

D

E

F

A

B

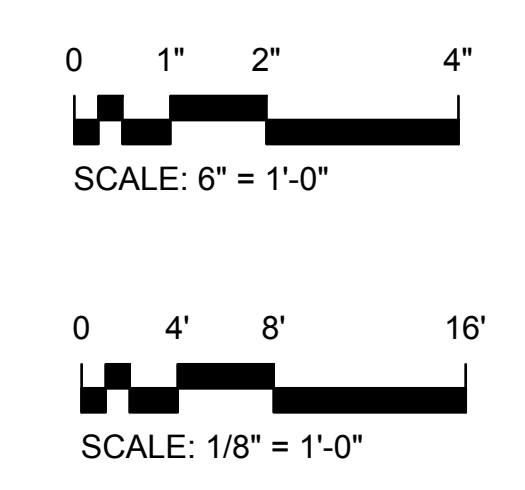
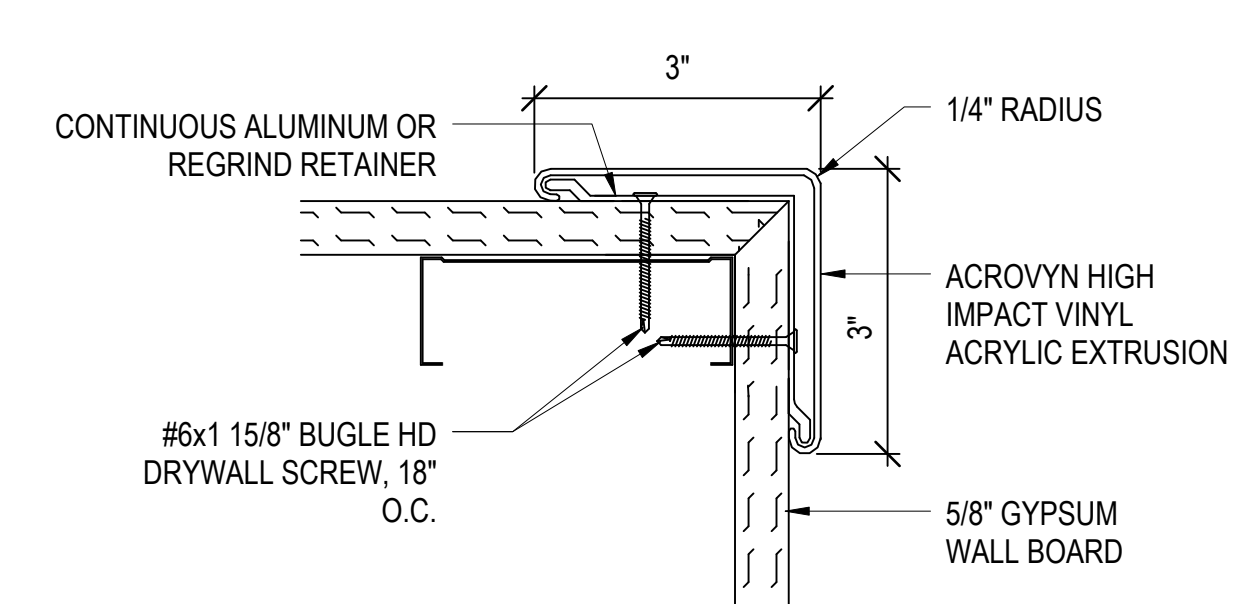
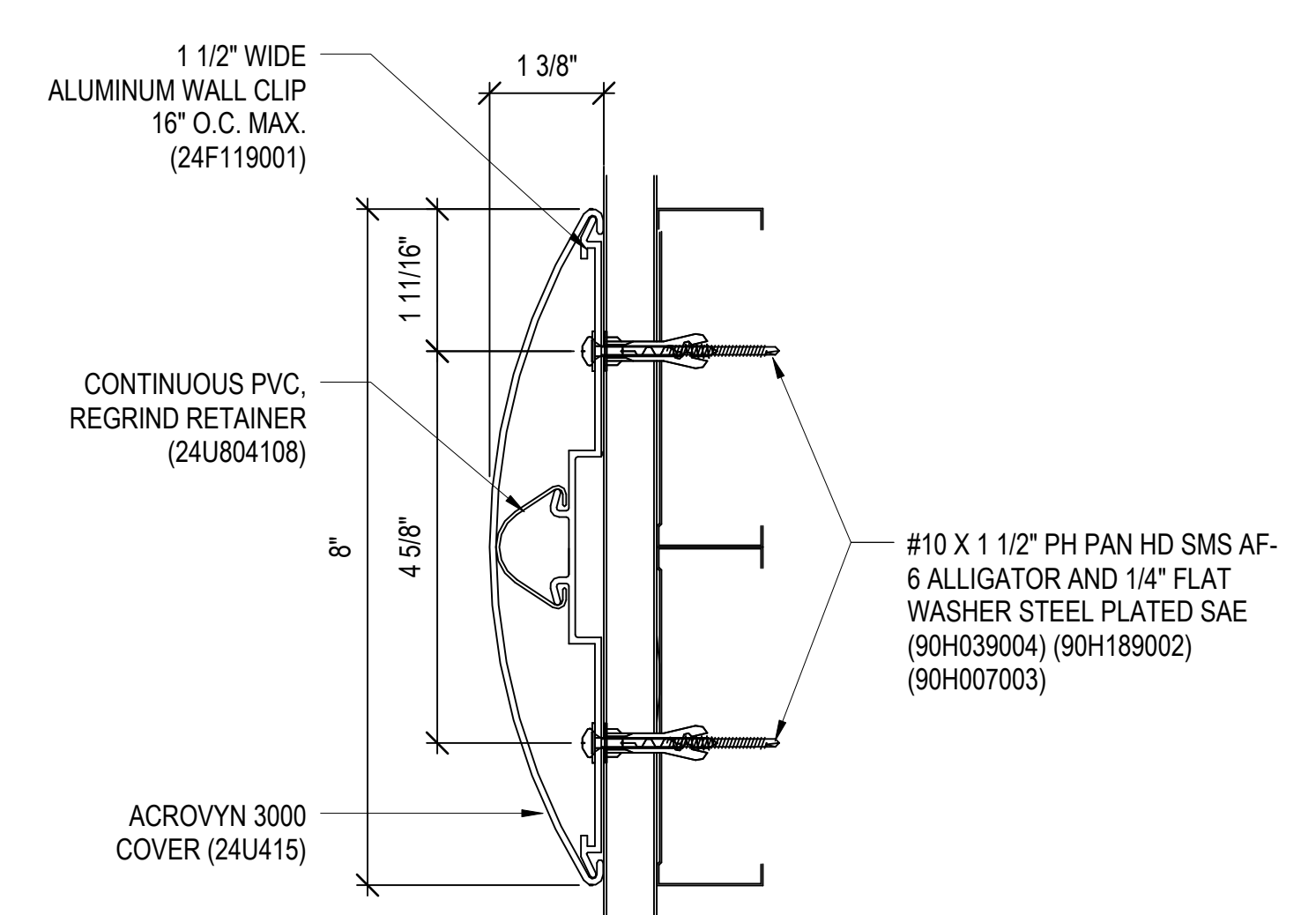
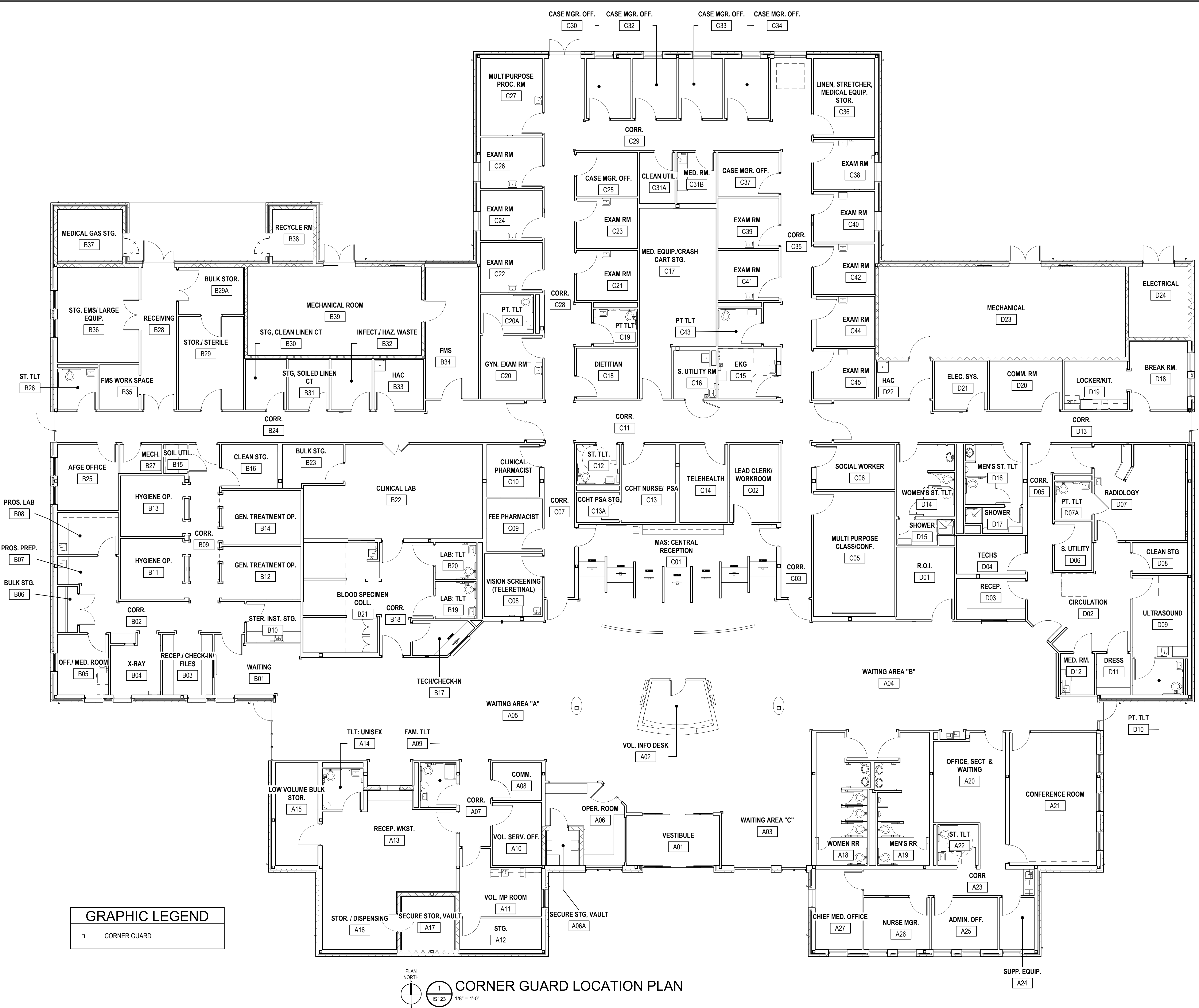
C

D

E

F

3/26/2012 10:04:24 AM
D:_MAC2012\roberta13271-01_BES_JOPC_walls.rvt
one eighth inch = one foot
one quarter inch = one foot
three eighths inch = one foot
one half inch = one foot
three quarters inch = one foot
one inch = one foot
one and one half inches = one foot
two inches = one foot
three inches = one foot



CONSULTANTS:

CIVIL:
KENNETH HORNE & ASSOCIATES
7201 NORTH 9TH AVENUE, STE. 6
PENSACOLA, FLORIDA 32504
PH: (850) 471-0005
FX: (850) 471-0053

COMM/MS:
SCHMIDT CONSULTING GROUP, INC.
139 EAST GOVERNMENT STREET
PENSACOLA, FLORIDA 32202
PH: (850) 438-0050
FX: (850) 432-8611

LANDSCAPE ARCHITECT:
CSA GROUP, INC.
6300 PICCADILLY SQUARE DRIVE
MOBILE, ALABAMA 36689
PH: (251) 344-4023
FX: (251) 344-4022

ARCHITECTURE:
BULLOCK TICE ASSOCIATES, INC.
909 EAST CERVANTES STREET
PENSACOLA, FL 32501
PH: (850) 434-5444
FX: (850) 432-8208

SURVEYORS:
KCI TECHNOLOGIES, INC.
10401 HIGHLAND MANOR DRIVE, SUITE 120
TAMPA, FLORIDA 33610
PH: (813) 740-2300

ARCHITECT/ENGINEERS:

STATE OF FLORIDA
Professional Seal
BES DESIGN/BUILD, LLC
766 Middle St, Fairhope, AL 36532
Phone: 251.990.5778 Fax: 251.990.3716

Drawing Title	CORNER GUARD LOCATION PLAN
Approved: Project Director	

Project Title	PANAMA CITY JOINT OUTPATIENT CLINIC VA GULF COAST HEALTH CARE
Project Number	520-326
Building Number	-
Location	PANAMA CITY, FLORIDA
Date	MARCH 2012
Checked	BM
Drawn	TW/MF
Drawing Number	IS123
Dwg. 4 of 6	

Office of
Construction
and Facilities
Management

Department of
Veterans Affairs