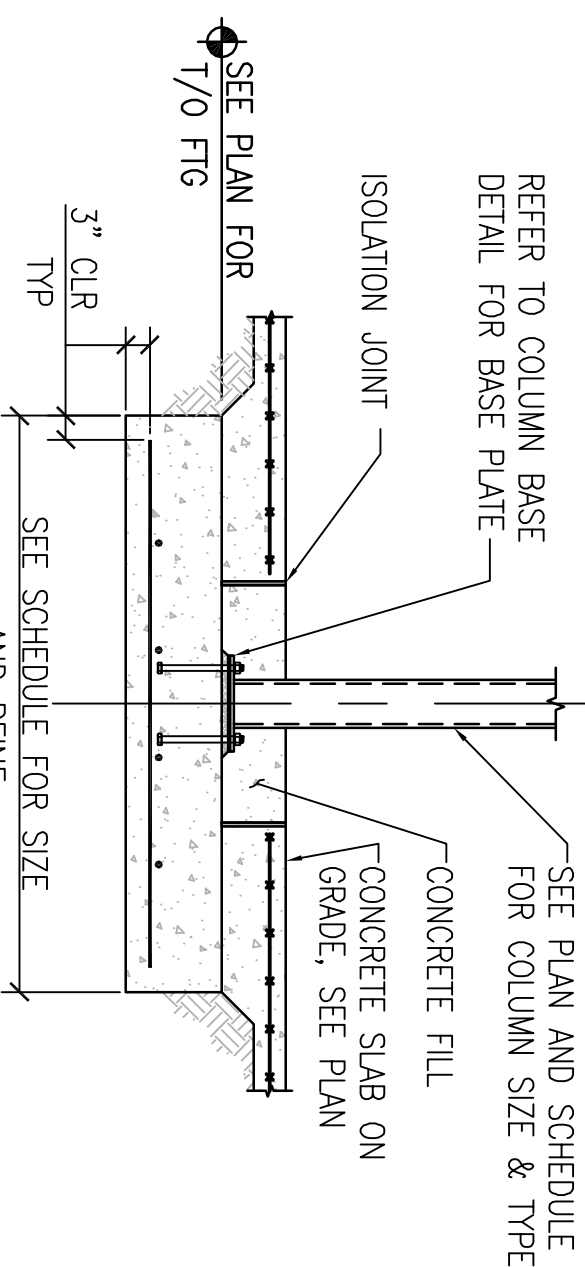
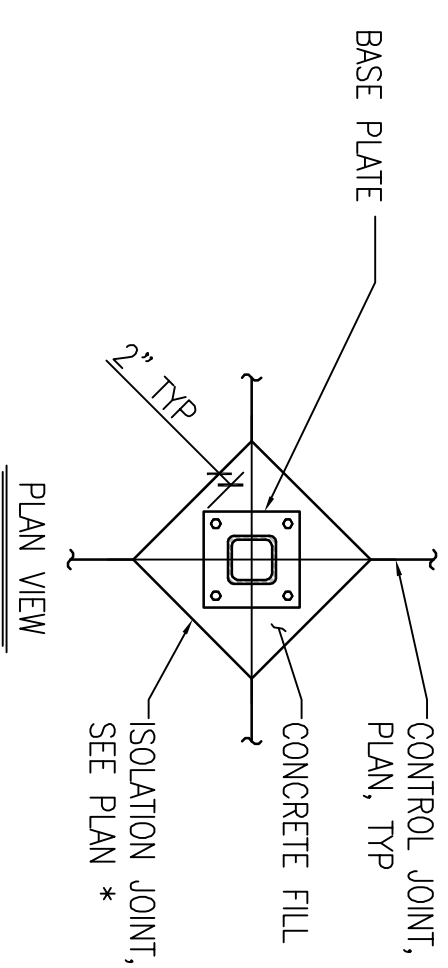
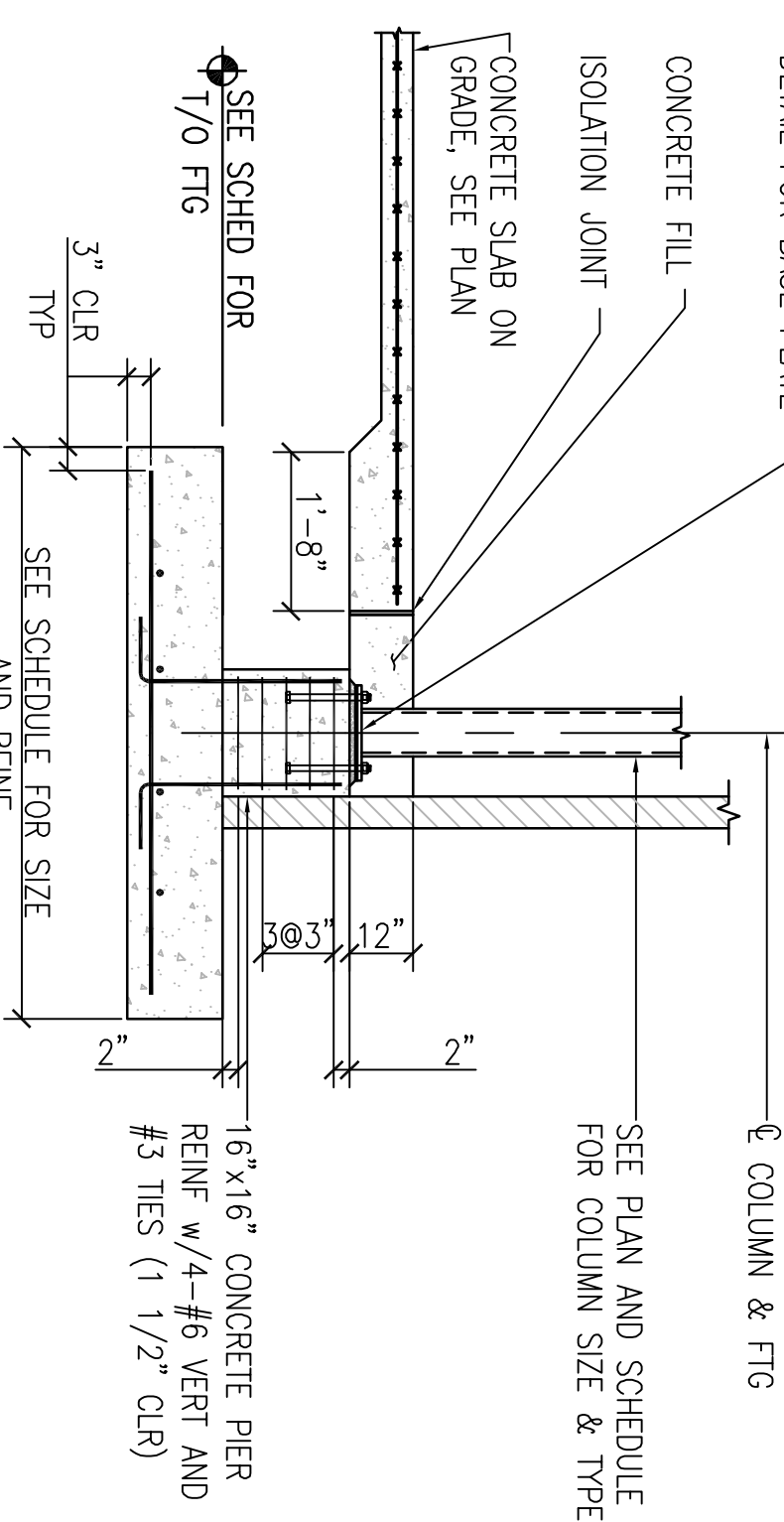
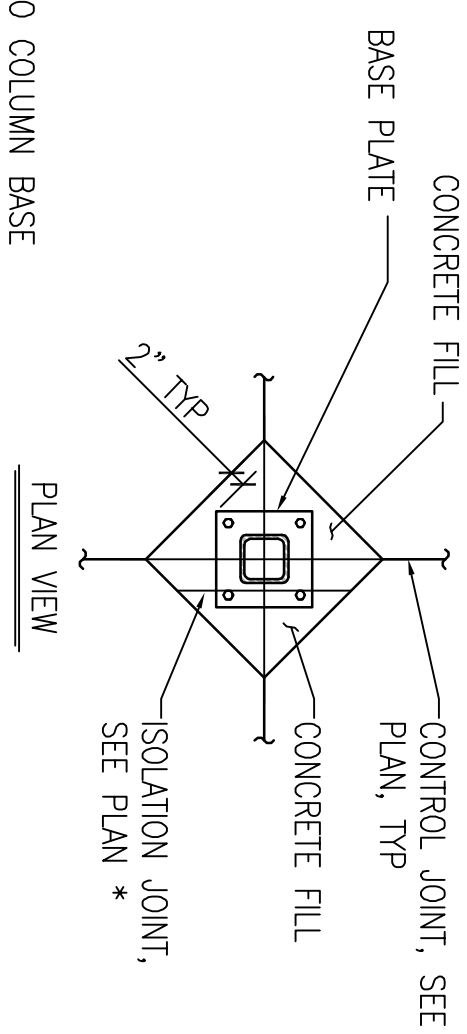


TYPICAL STEPPED WALL FOOTING

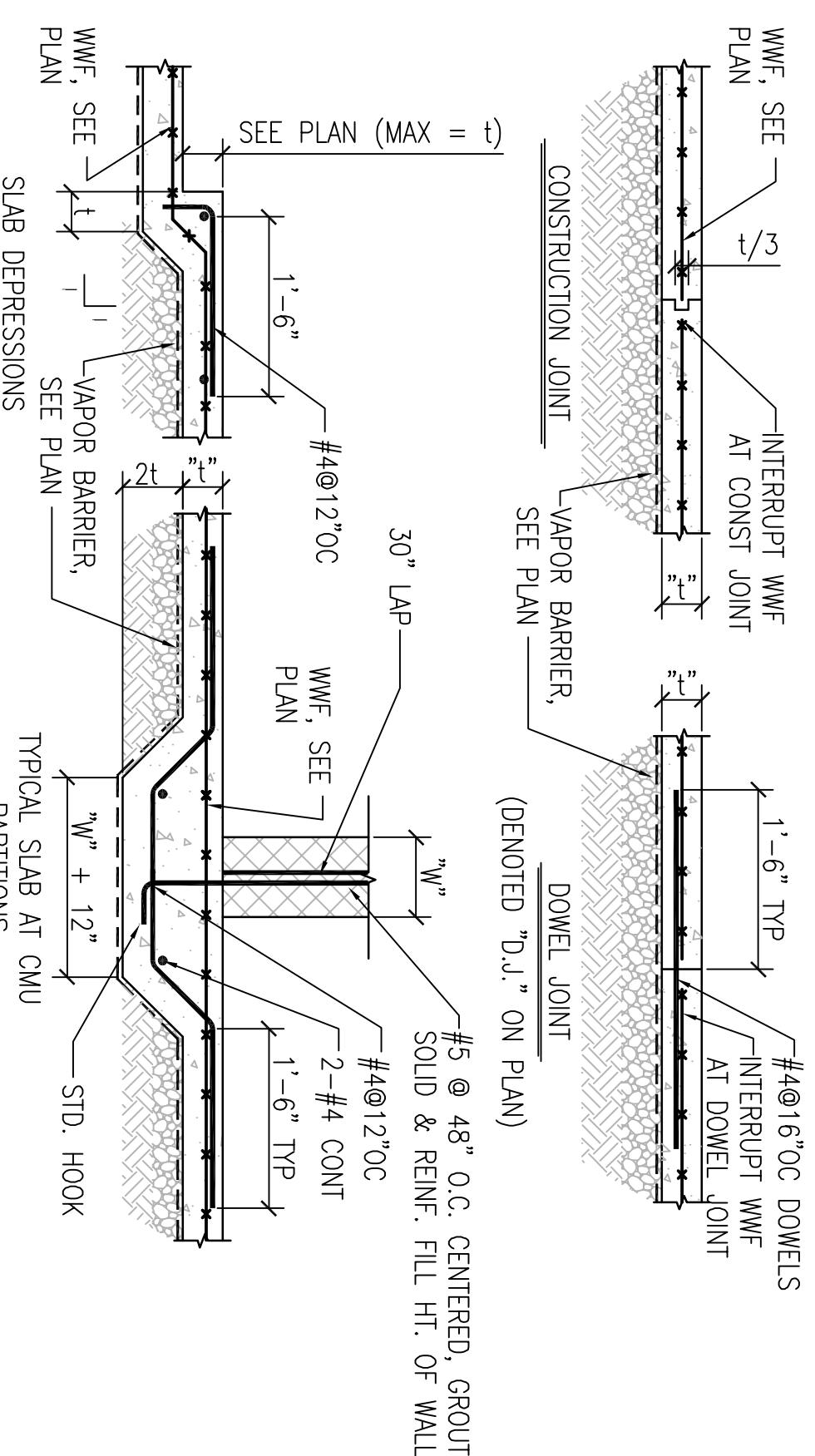
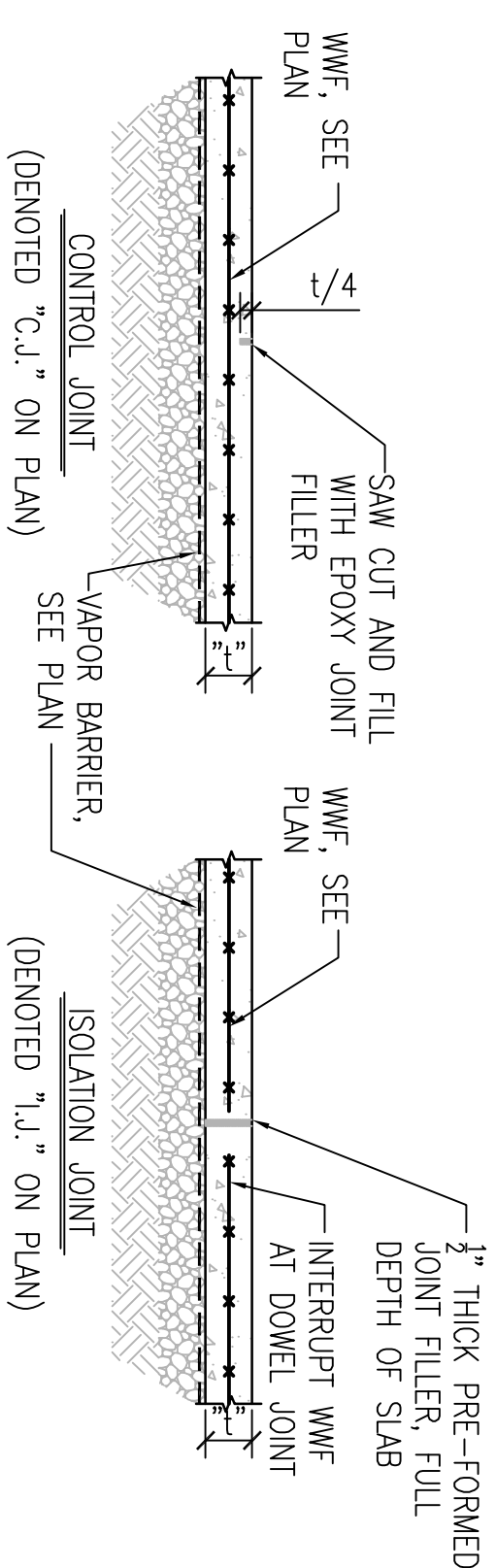
A SCALE: 1/2" = 1'-0"



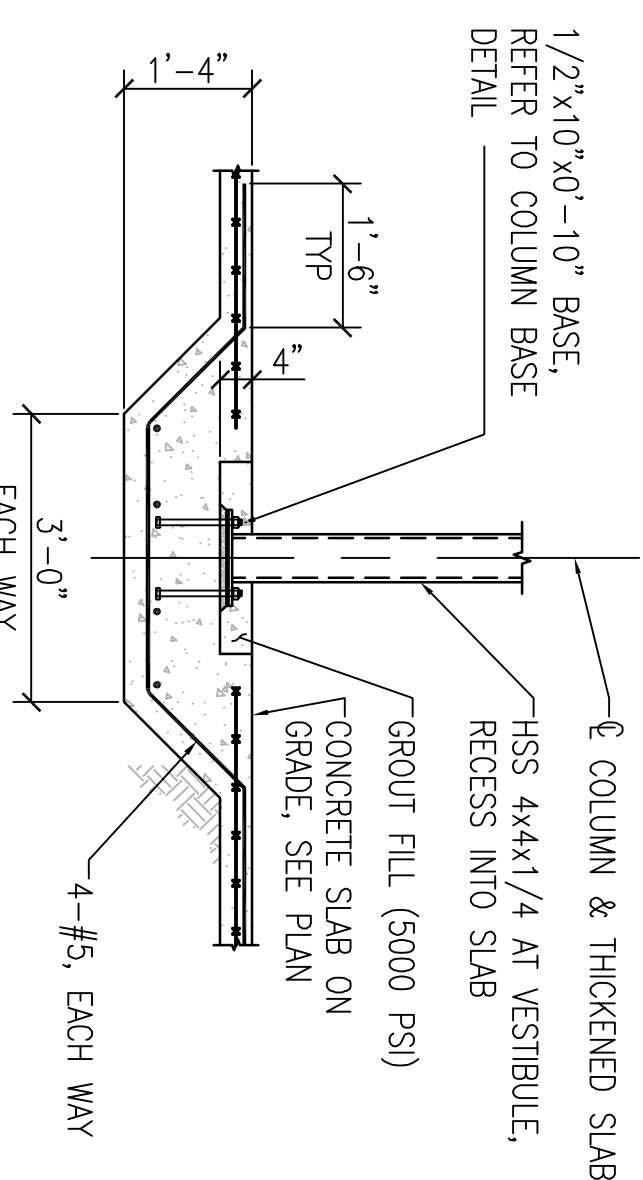
B TYPICAL INTERIOR COLUMN FOOTING



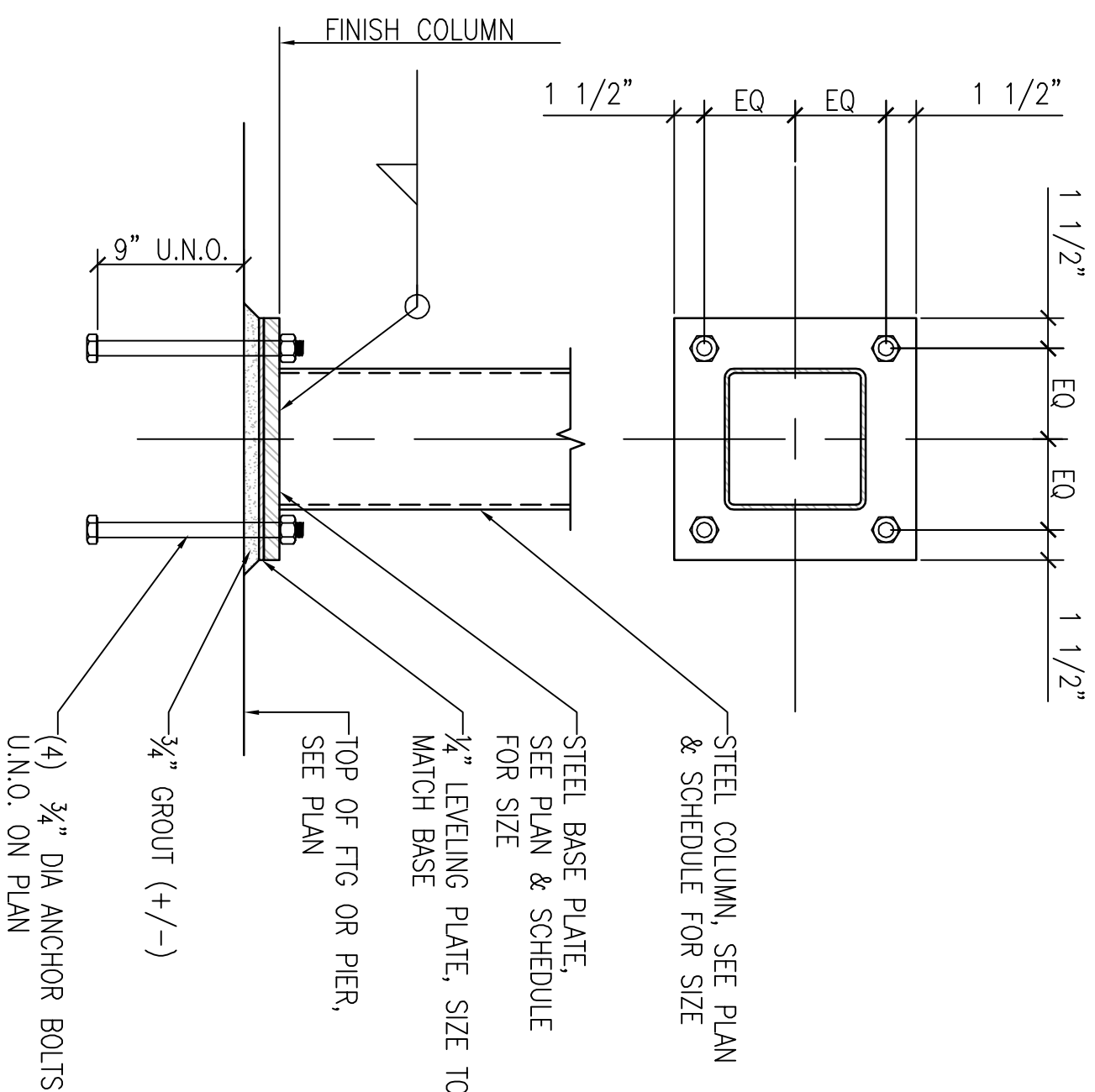
TYPICAL EXTERIOR COLUMN FOOTING



D **TYPICAL SLAB ON GRADE DETAILS**
SCALE: 3/4" = 1'-0"

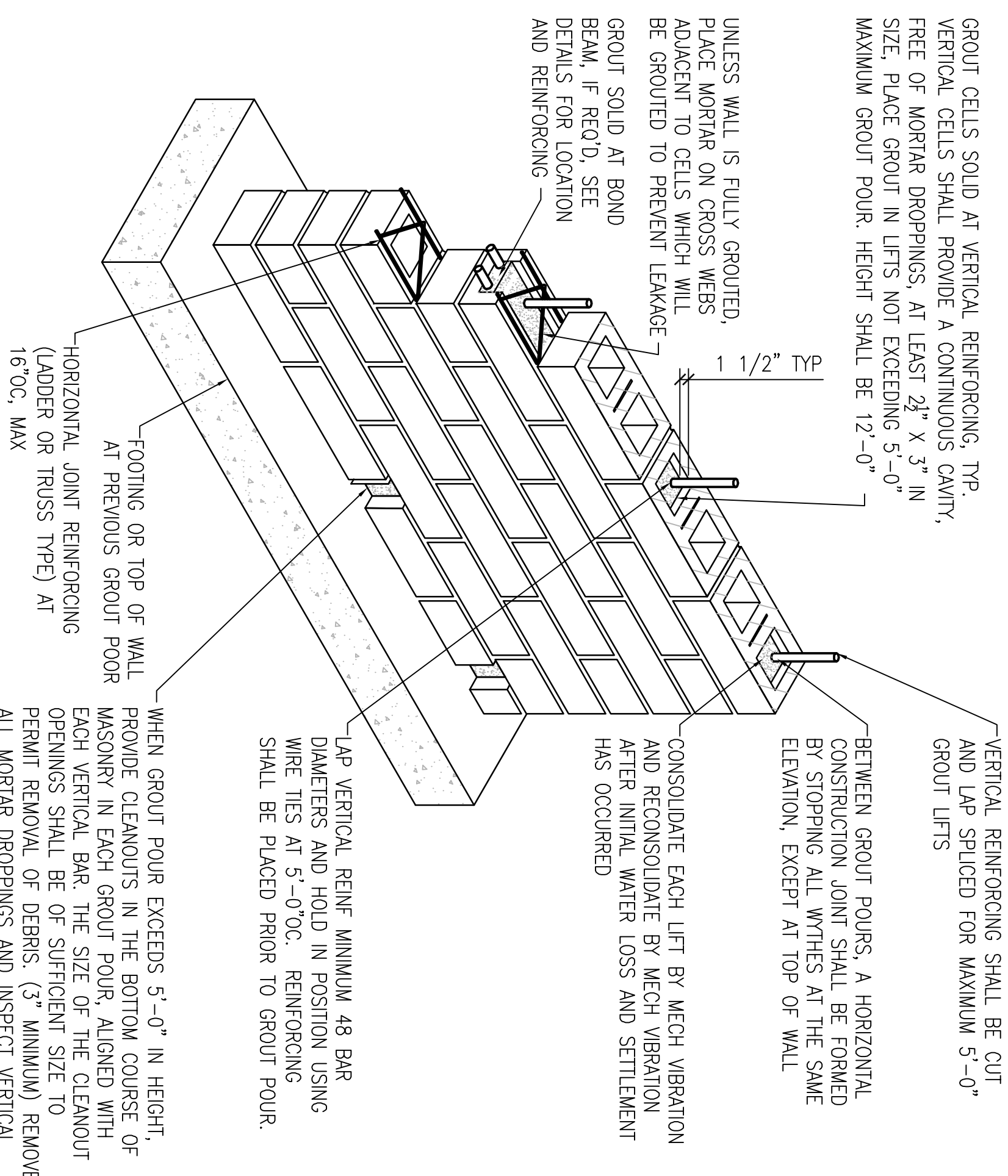


E RECESSED VESTIBULE COLUMN
SCALE: 1/2" = 1'-0"

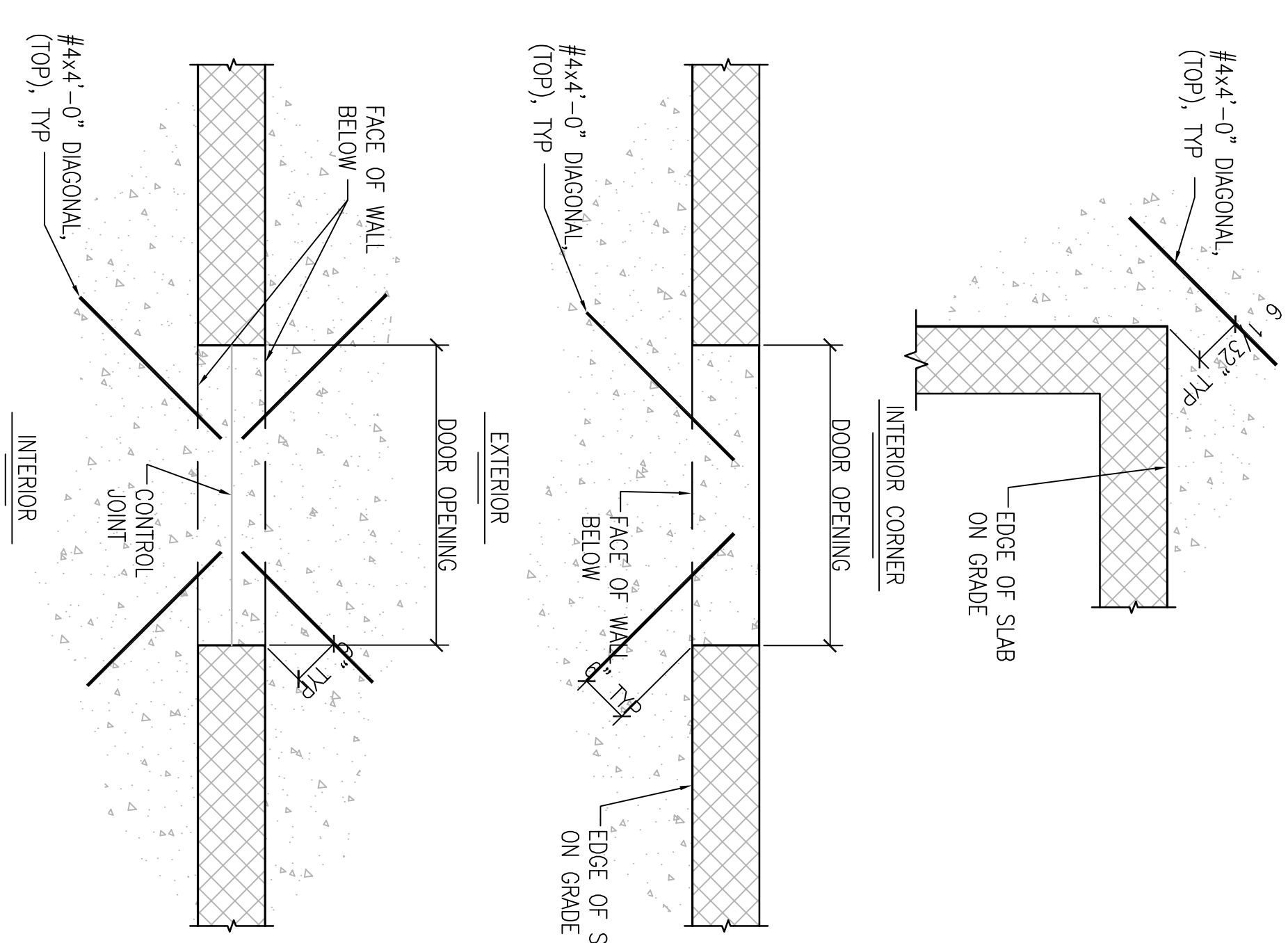


TYPICAL HSS COLUMN BASE

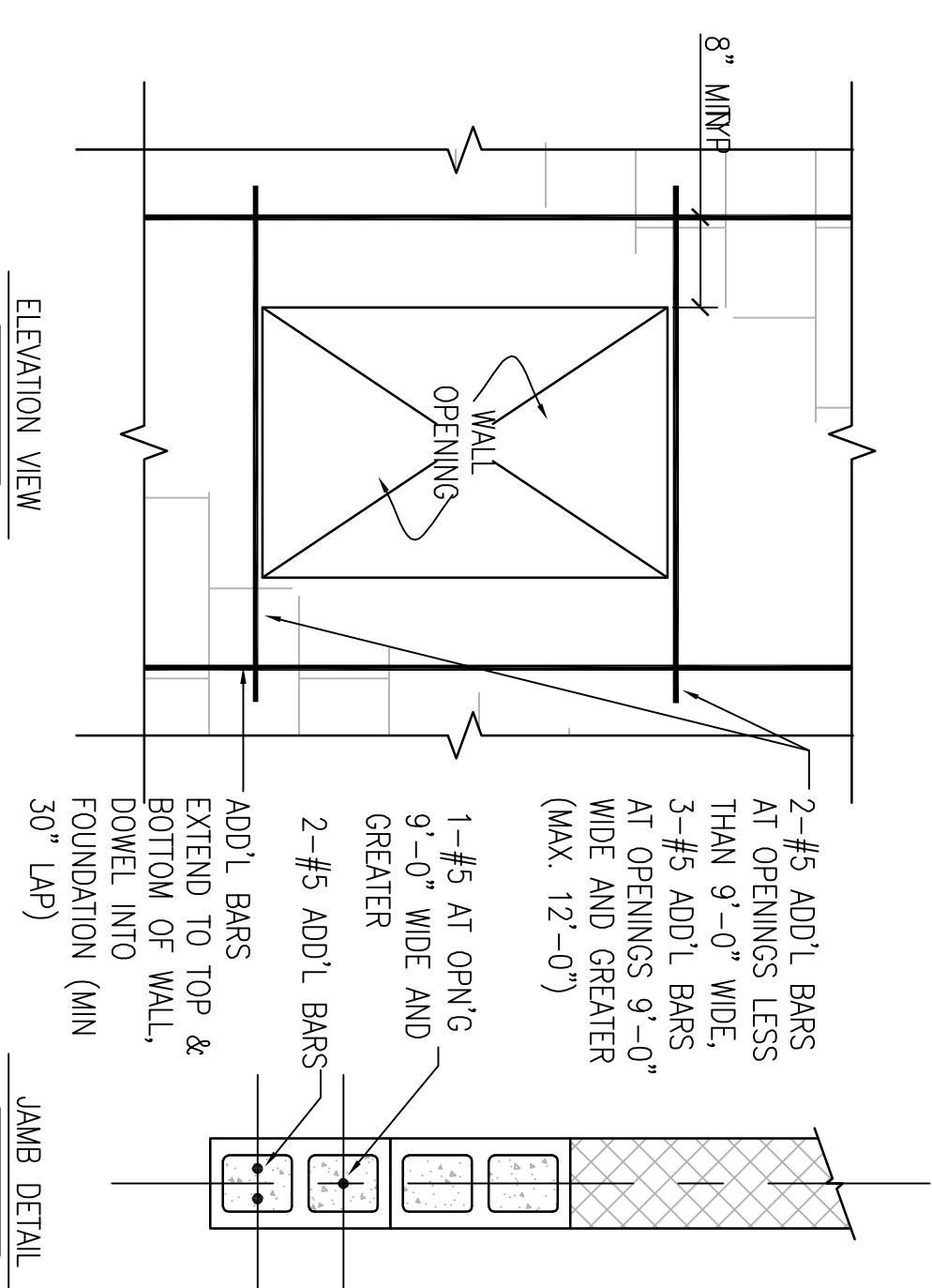
SCALE: 1 1/2" = 1'-0"



TYPICAL CMU CONSTRUCTION



H **ADDITIONAL SLAB REINFORCING AT CMU**
SCALE: $3/4" = 1'-0"$



ADDITIONAL REINF AT CMU WALL OPENING

[illegible]

CONSULTANTS:

CONSULTING:
KENNETH HOPPE & ASSOCIATES
7231 NORTH 9TH AVENUE
PENSACOLA, FLORIDA 32504
FX (850) 477-0033

LANDSCAPE ARCHITECT:
CSA GROUP, INC.
10000 UNIVERSITY SQUARE DRIVE
P.O. BOX 344403
P.O. BOX 344403
FX (281) 344-4032

ARCHITECTURE:
BILLOCK THE ASSOCIATES, INC.
608 DAVID BENNETT STREET
PENSACOLA, FLORIDA 32501
FX (850) 432-6206

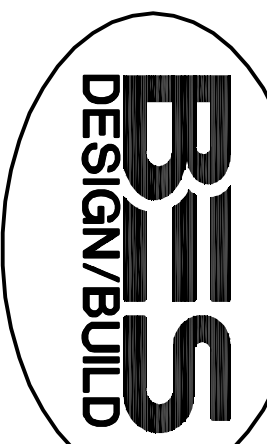
COMMUNITY DEVELOPMENT:
SCHMIDT CONSULTING GROUP, INC.
135 EAST GOVERNMENT STREET
PENSACOLA, FLORIDA 32502
FX (850) 432-8651

COMM/OPS:
SCOTT CONSULTING GROUP, INC.
35 EAST OVERLAND STREET
PENSACOLA, FLORIDA 32502
PH (904) 432-9831
FX (904) 432-9831

ARCHITECTURE:
BILLOCK TOWE ASSOCIATES, INC.
1000 JACKSONWAY STREET
PENSACOLA, FLORIDA 32501
PH (904) 434-4444
FX (904) 432-5038

SURVEY/OPS:
SRI TECHNOLOGIES, INC.
1041 OVERLAND MAJOR DRIVE, SUITE 120
TAMPA, FLORIDA 33607
PH (813) 740-5300

ARCHITECT/ENGINEERS




BES DESIGN/BUILD, LLC
766 Middle St, Fairhope, AL 36532
Phone: 251.990.5778 Fax: 251.990.3716

Drawing Title	Typical Details
---------------	-----------------

<p> Drawing Title TYPICAL DETAILS </p>
<p> Approved Project Director </p>

FINAL SUBMISSION

Project Title	PANAMA CITY JOINT OUTPATIENT CLINIC VA GULF COAST HEALTH CARE	Project Number	520-326
Location	PANAMA CITY, FLORIDA	Building Number	-
Drawing Number	SF201 Dwg. 7 of 17		



Office of Construction and Facilities Management