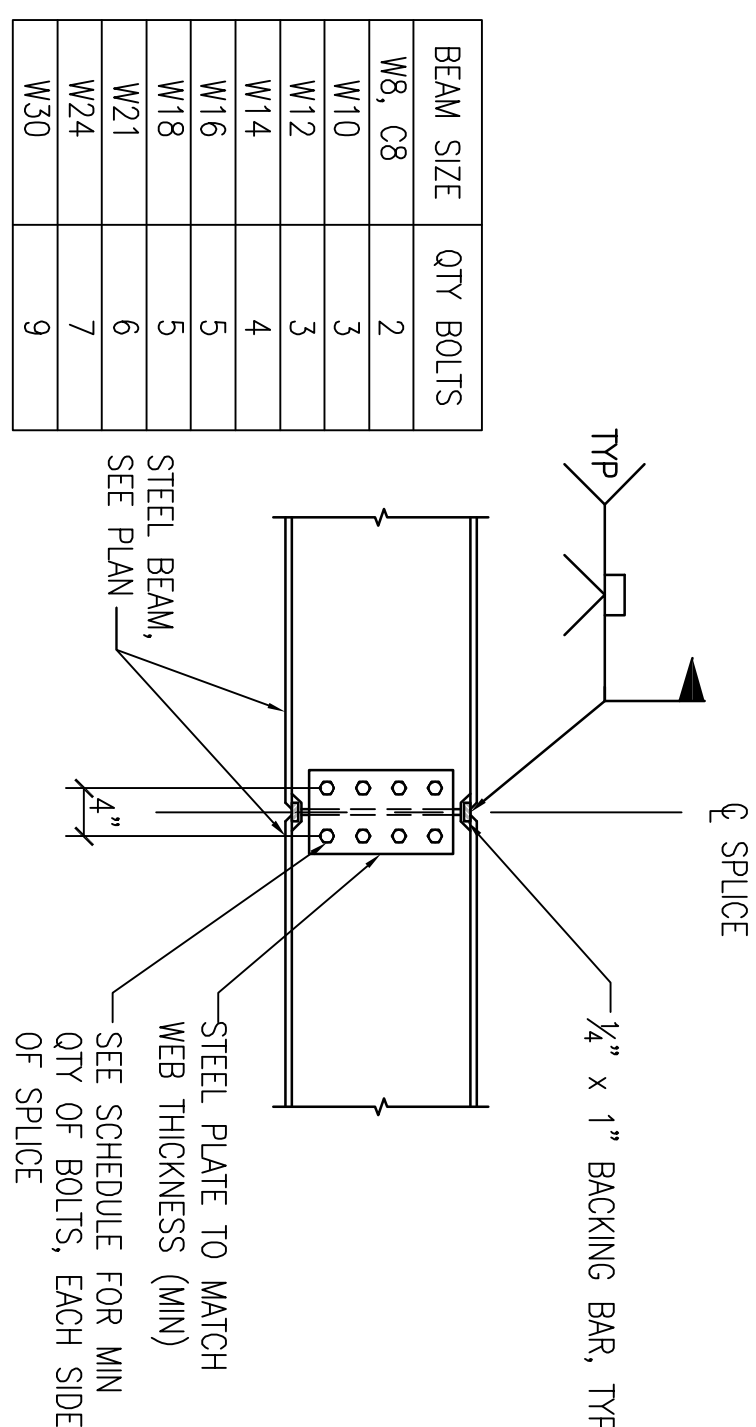
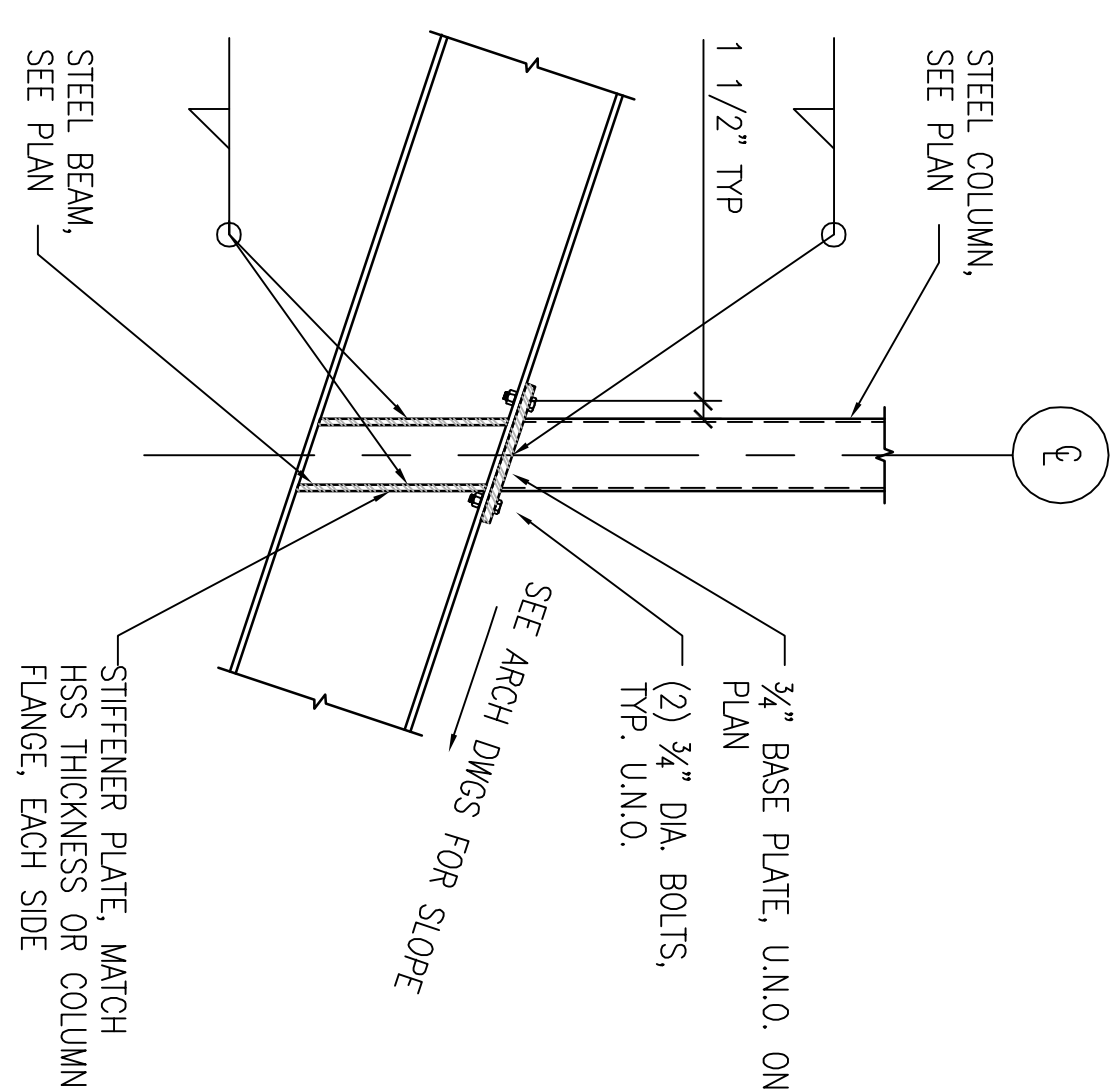


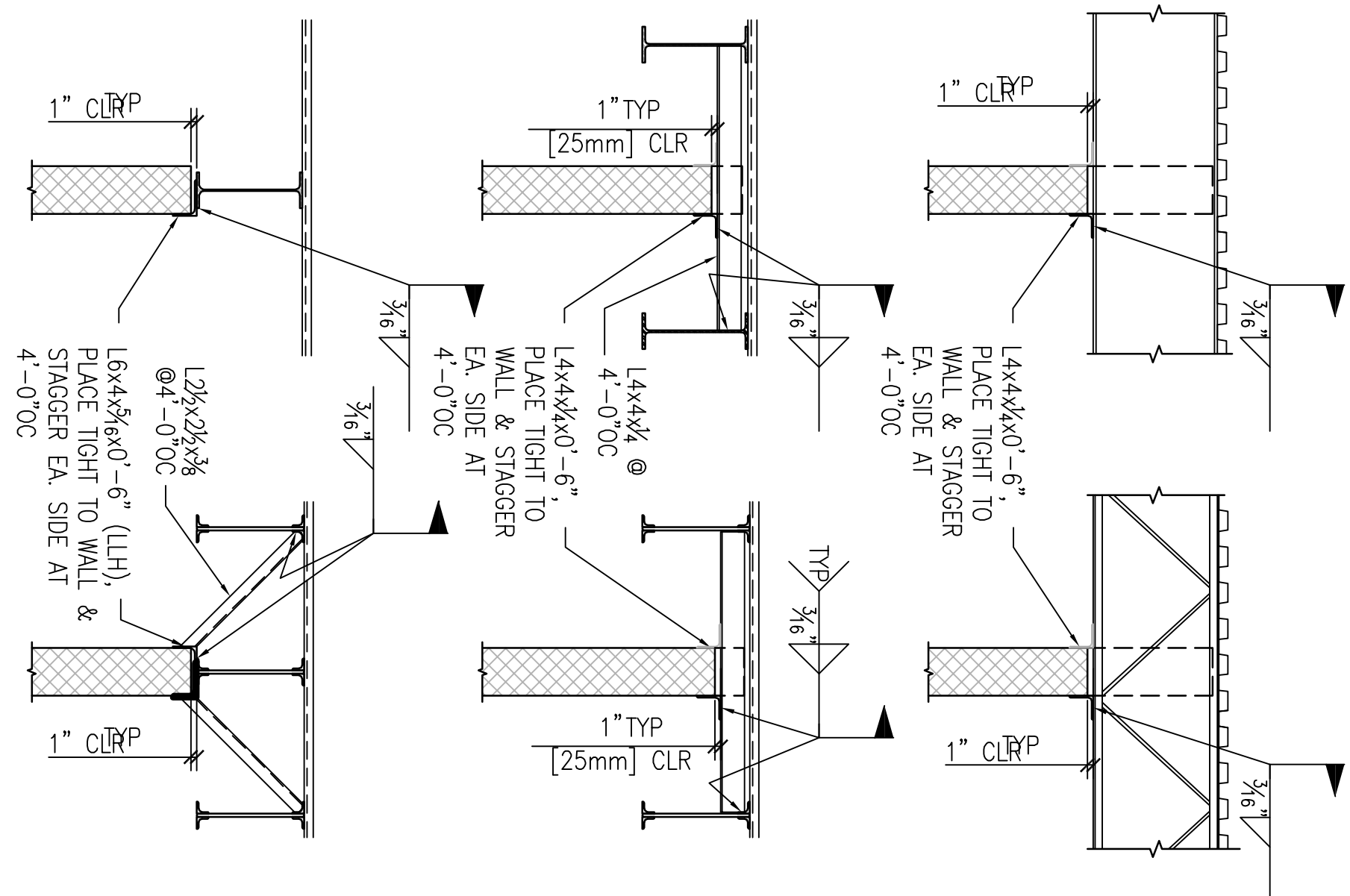
**TYPICAL MASONRY WALL REINFORCING**



**TYPICAL FIELD SPLICE**  
SCALE: 3/4" = 1'-0"



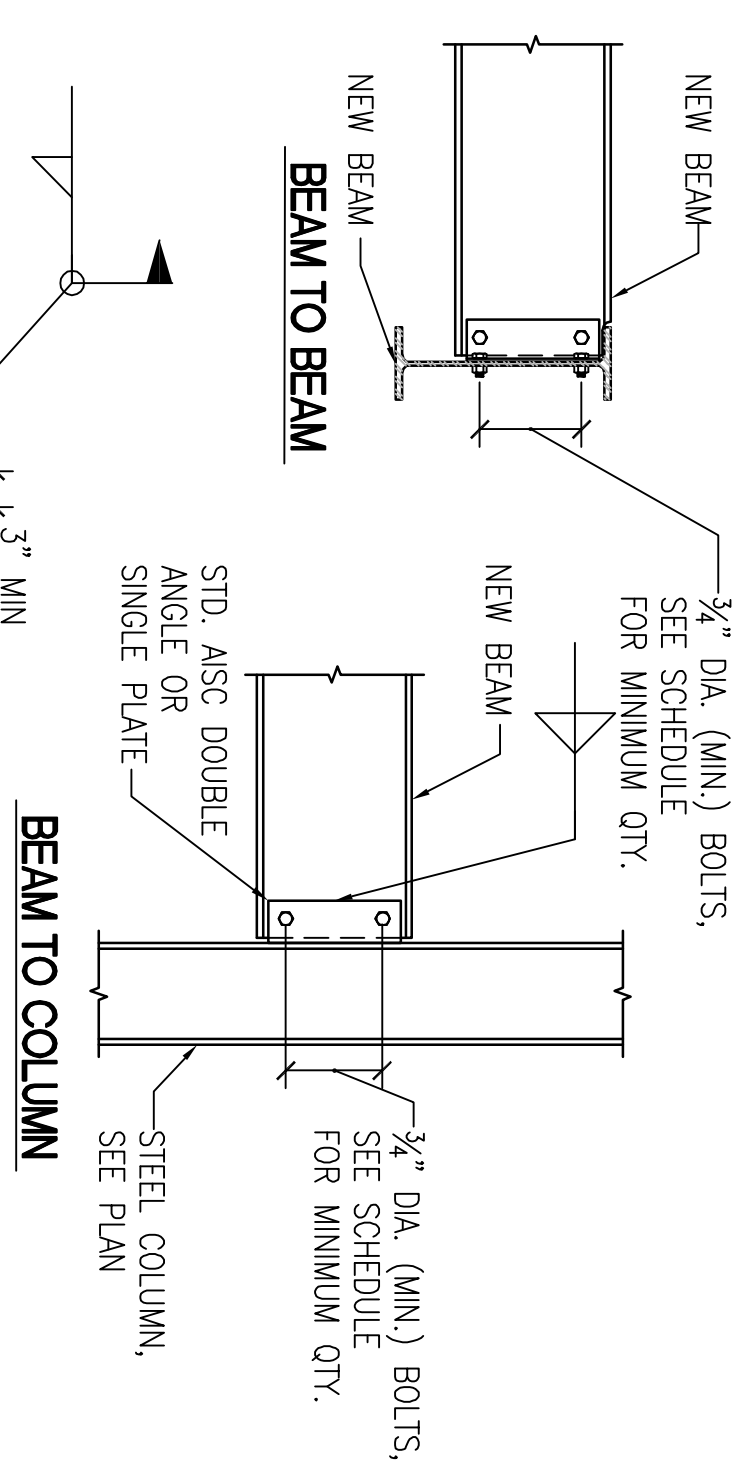
**H** TYPICAL COLUMN ON STEEL BEAM  
SCALE: 3/4" = 1'-0"



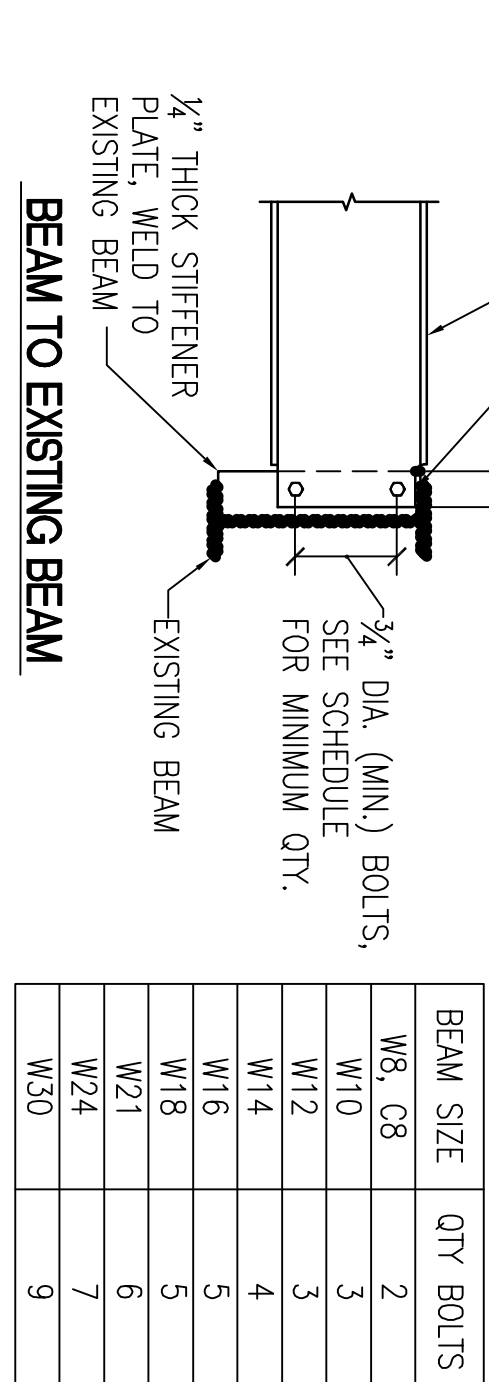
**TYPICAL CMU PARTITION BRACING**

**B**

SCALE: 1/2" = 1'-0"

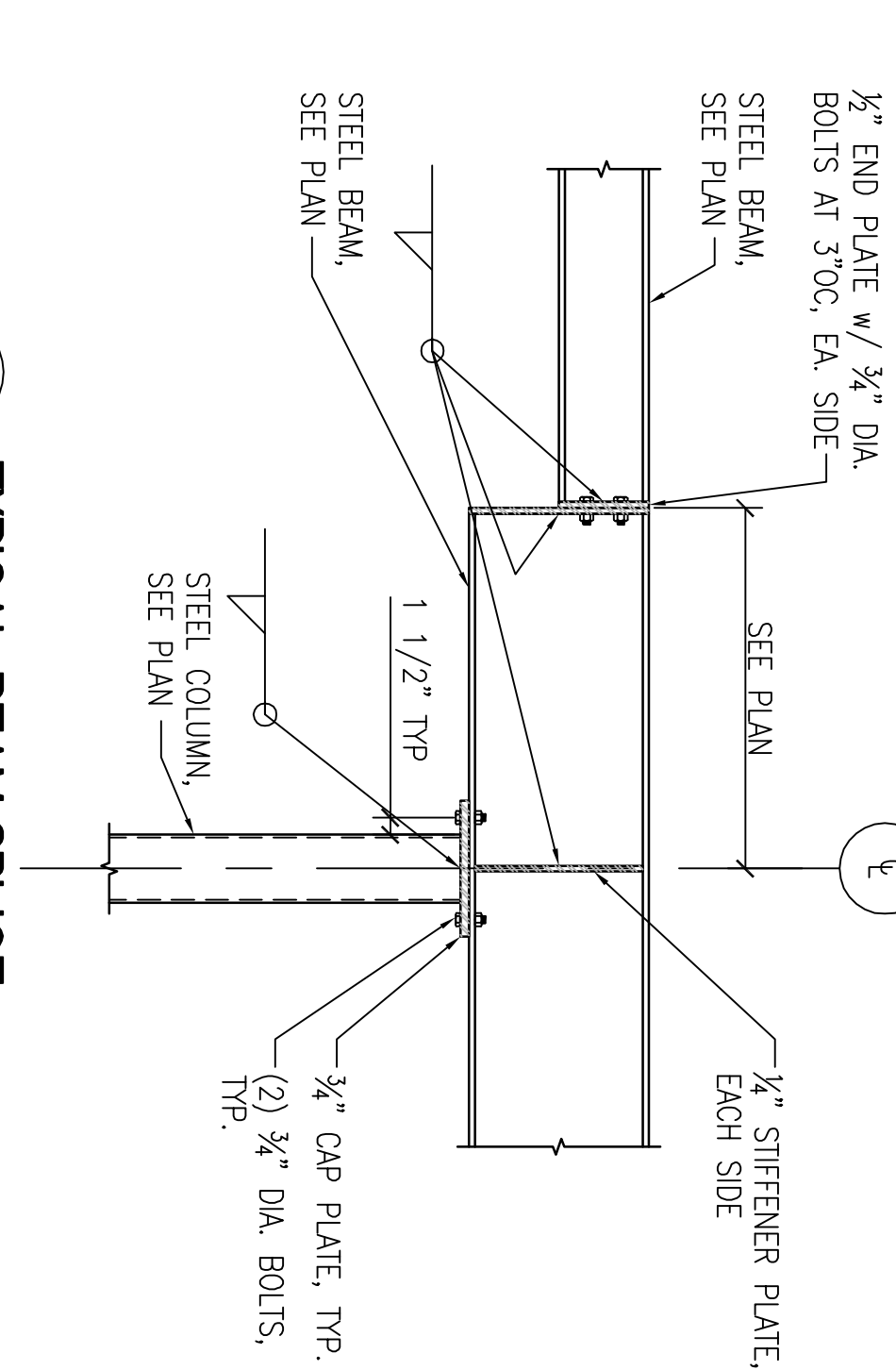


**TYPICAL AISC SHEAR CONNECTIONS**



**D** TYPICAL HSS COLUMN MOMENT CONNECTIONS  
SCALE:  $3/4" = 1'-0"$

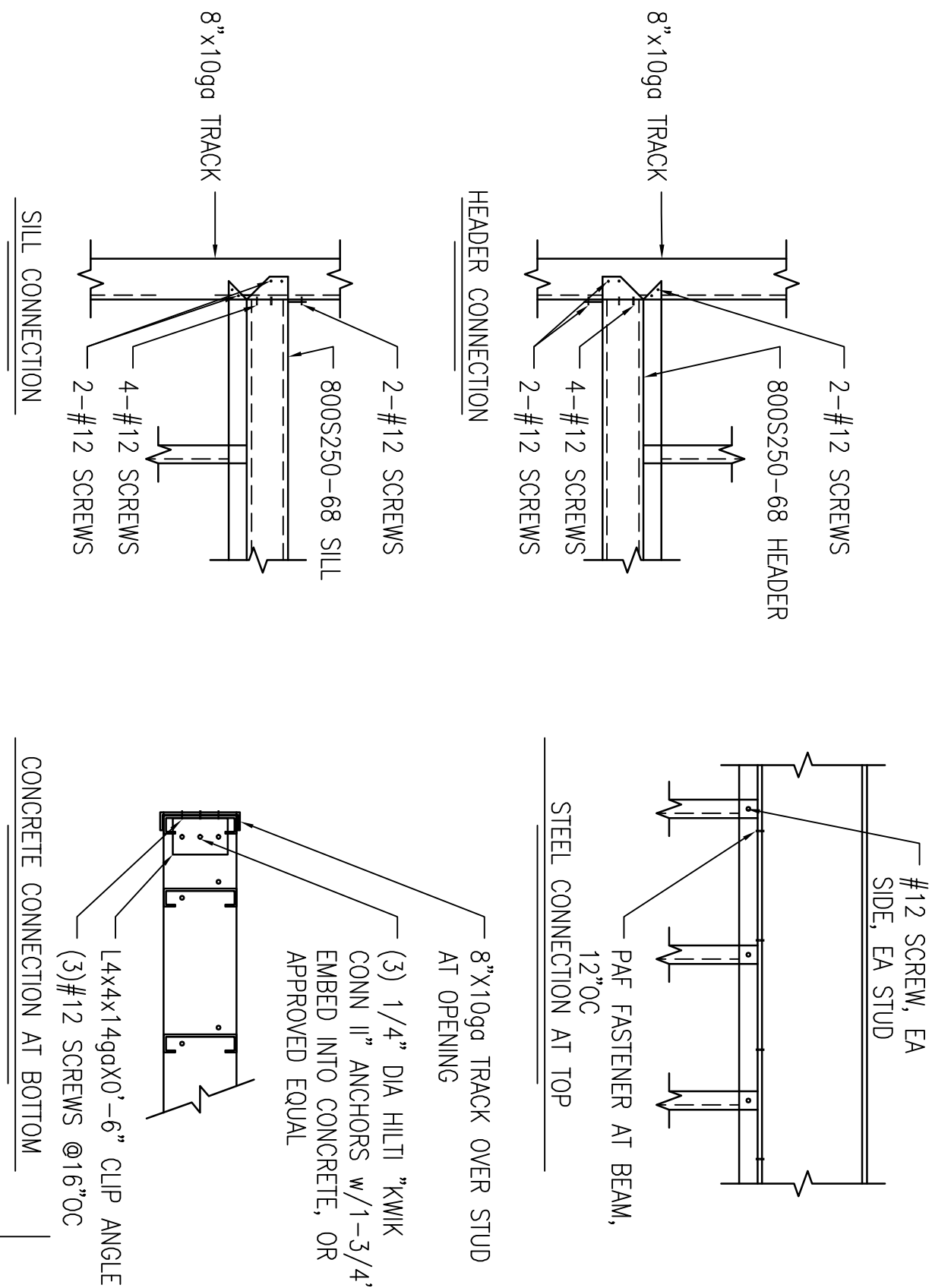
BEAM SIZE	L-PLATE	W-PLATE	WELD SIZE
W8	16"	12"	1/4"
W10	16"	6-1/2"	1/4"
W12	16"	7"	1/4"
W14	16"	6"	1/4"
W16	16"	6-1/2"	1/4"
W18	16"	6-1/2"	1/4"
W21	16"	7"	5/16"
W24	17"	7-1/2"	5/16"
W27	24"	12"	5/16"



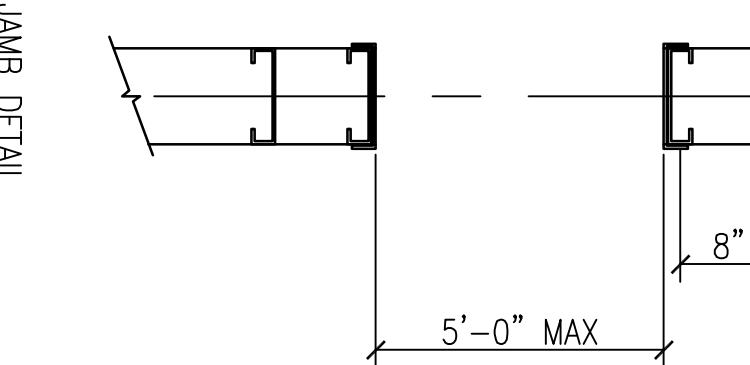
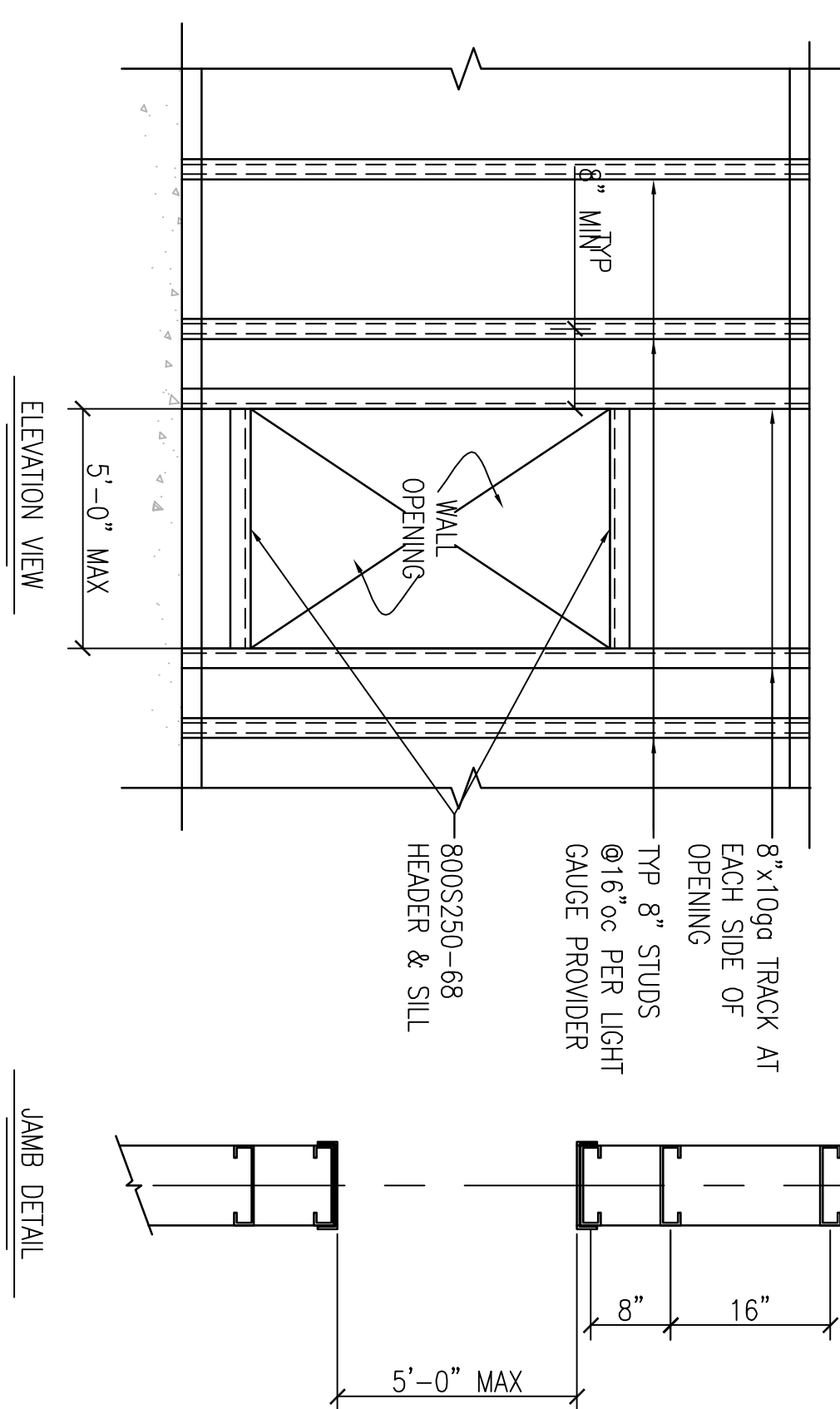
**TYPICAL BEAM SPLICE**

SCALE: 3/4" = 1'-0"

**E**



**K** ADDITIONAL REINF. AT TYP LIGHT GAUGE WALL OPENING  
SCALE: 3/4" = 1'-0"



FINAL SUBMISSION


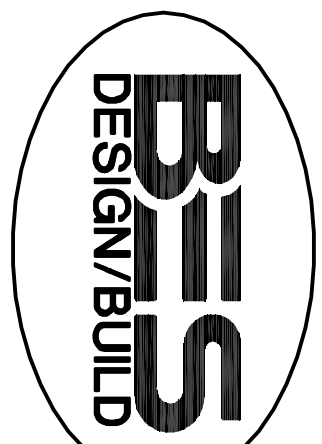
[illegible]

## CONSULTANTS:

**CIVIL**  
**KENNETH HORNE & ASSOCIATES**  
7291 NORTH 8TH AVENUE  
PENSACOLA, FLORIDA 32504  
PH (850) 475-9005  
FX (850) 475-0083

**LANDSCAPE ARCHITECT**  
**CSA GROUP, INC.**  
8300 PICCADILLY SQUARE DRIVE  
MOBILE, ALABAMA 36608  
PH (251) 344-4023  
FX (251) 344-4052

## ARCHITECT/ENGINEERS


The logo for BBS Design/Build is located in the bottom right corner. It consists of the letters "BBS" in a large, bold, sans-serif font, with "DESIGN/BUILD" in a smaller, all-caps, sans-serif font directly beneath it. The entire logo is enclosed within a thin oval border.

**BES DESIGN/BUILD, LLC**  
766 Middle St, Fairhope, AL 36532  
Phone: 251.990.5778 Fax: 251.990.3716

Drawing Title <b>TYPICAL DETAILS</b>	Approved Project Director
---	---------------------------

Project Title <b>PANAMA CITY          JOINT OUTPATIENT CLINIC          VA GULF COAST HEALTH CARE</b>		
Location <b>PANAMA CITY, FLORIDA</b>		
Date <b>MARCH 2012</b>	Checked <b>NB</b>	Drawn <b>NB/KM</b>

Project Number <b>520-326</b>	Office of Construction and Facilities Management
Building Number —	
Drawing Number <b>SF202</b> Dwg. 8 of 17	


 Department of  
Veterans Affairs