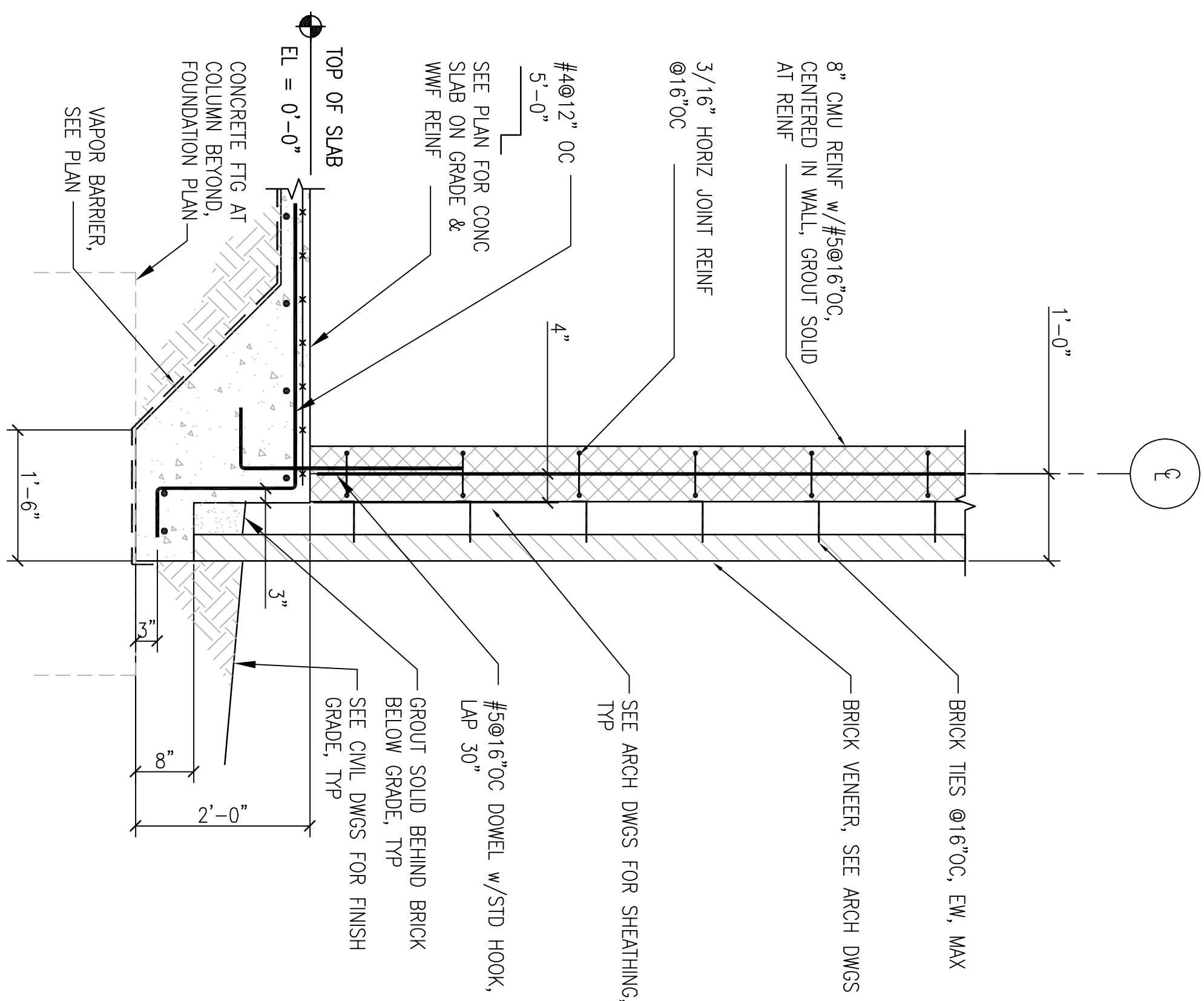


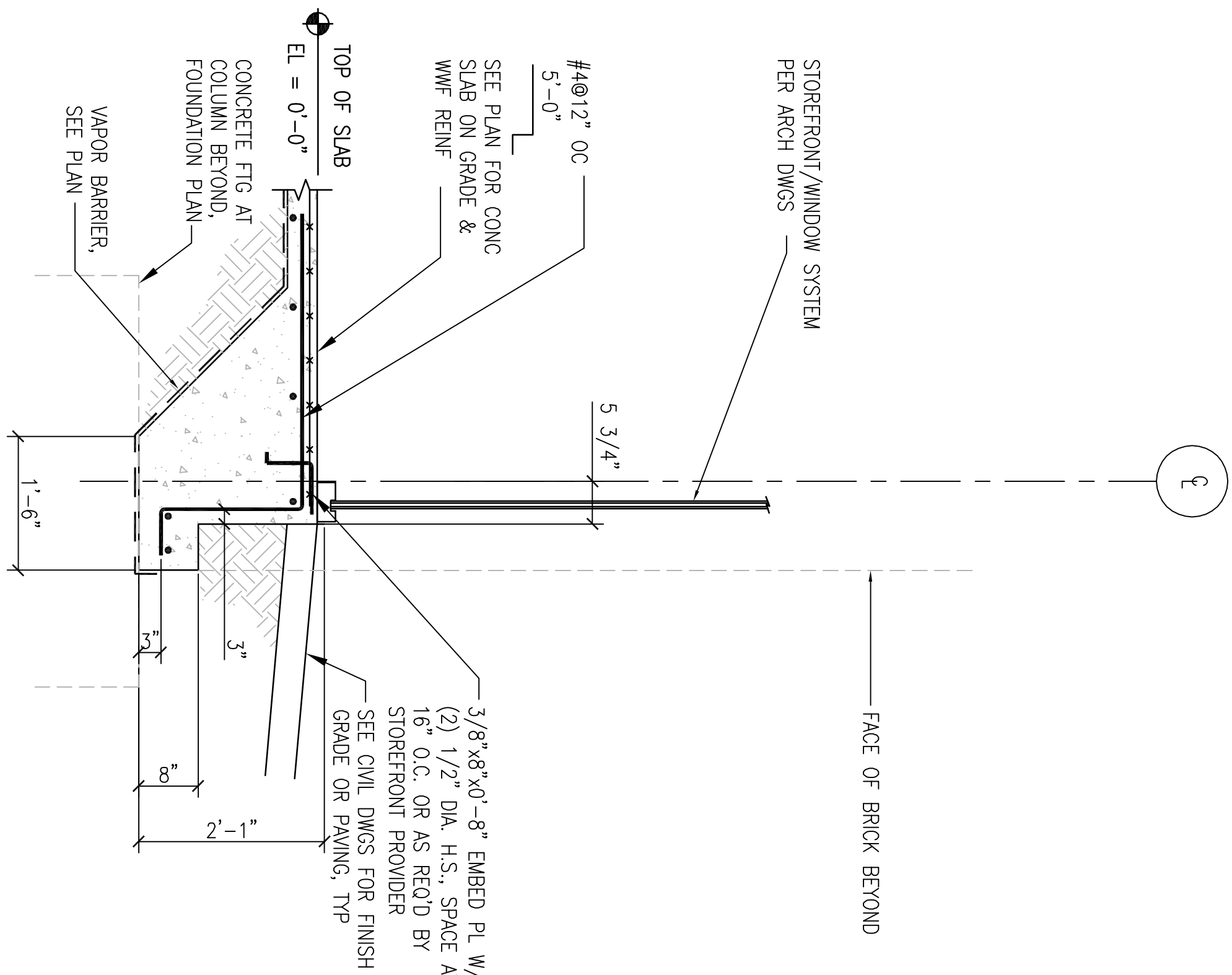
1 FOUNDATION SECTION AT EXTERIOR WALL

SB101 SCALE: 3/4"=1'-0"



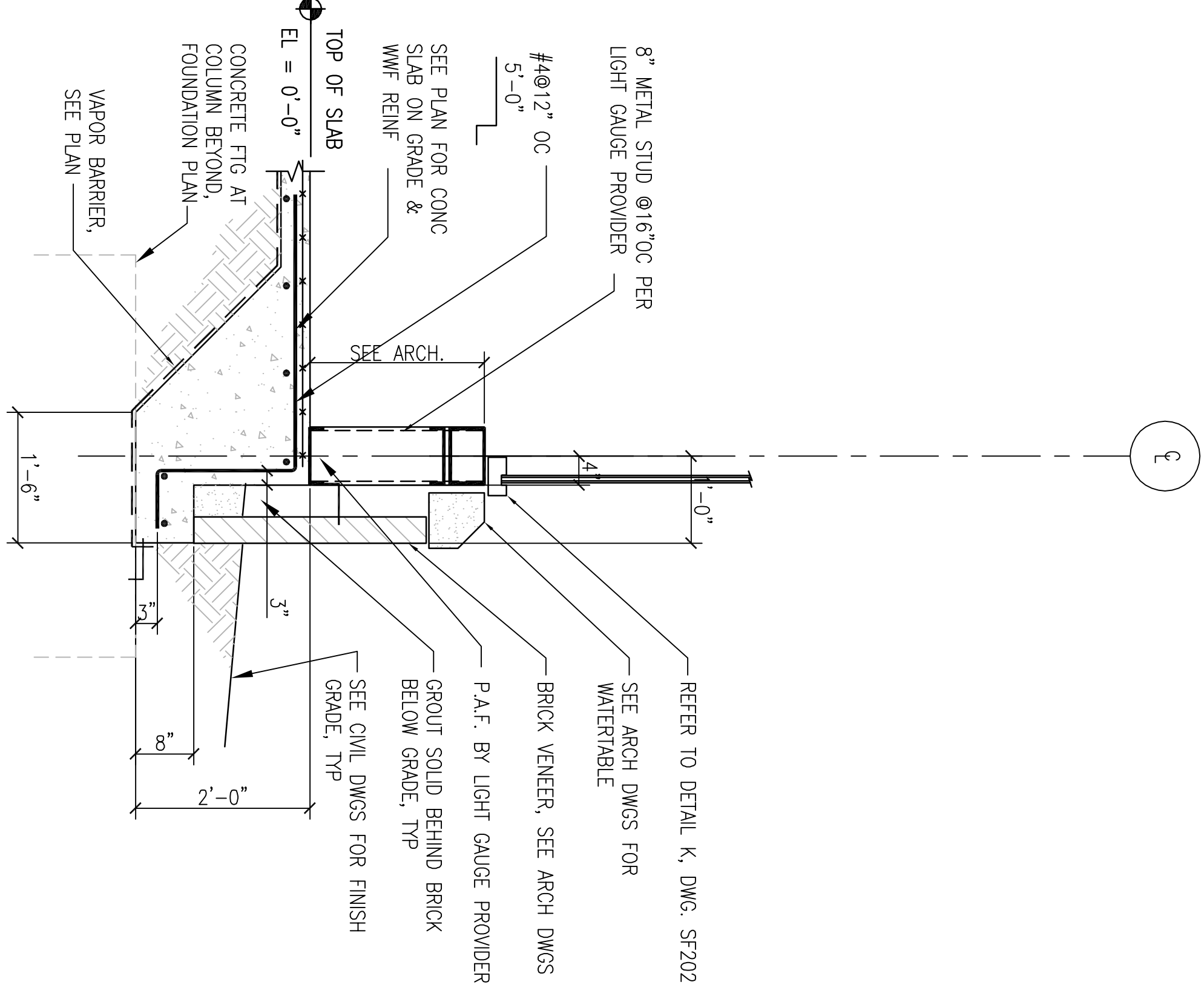
2 FOUNDATION SECTION AT EXTERIOR WALL

SB101 SCALE: 3/4"=1'-0"



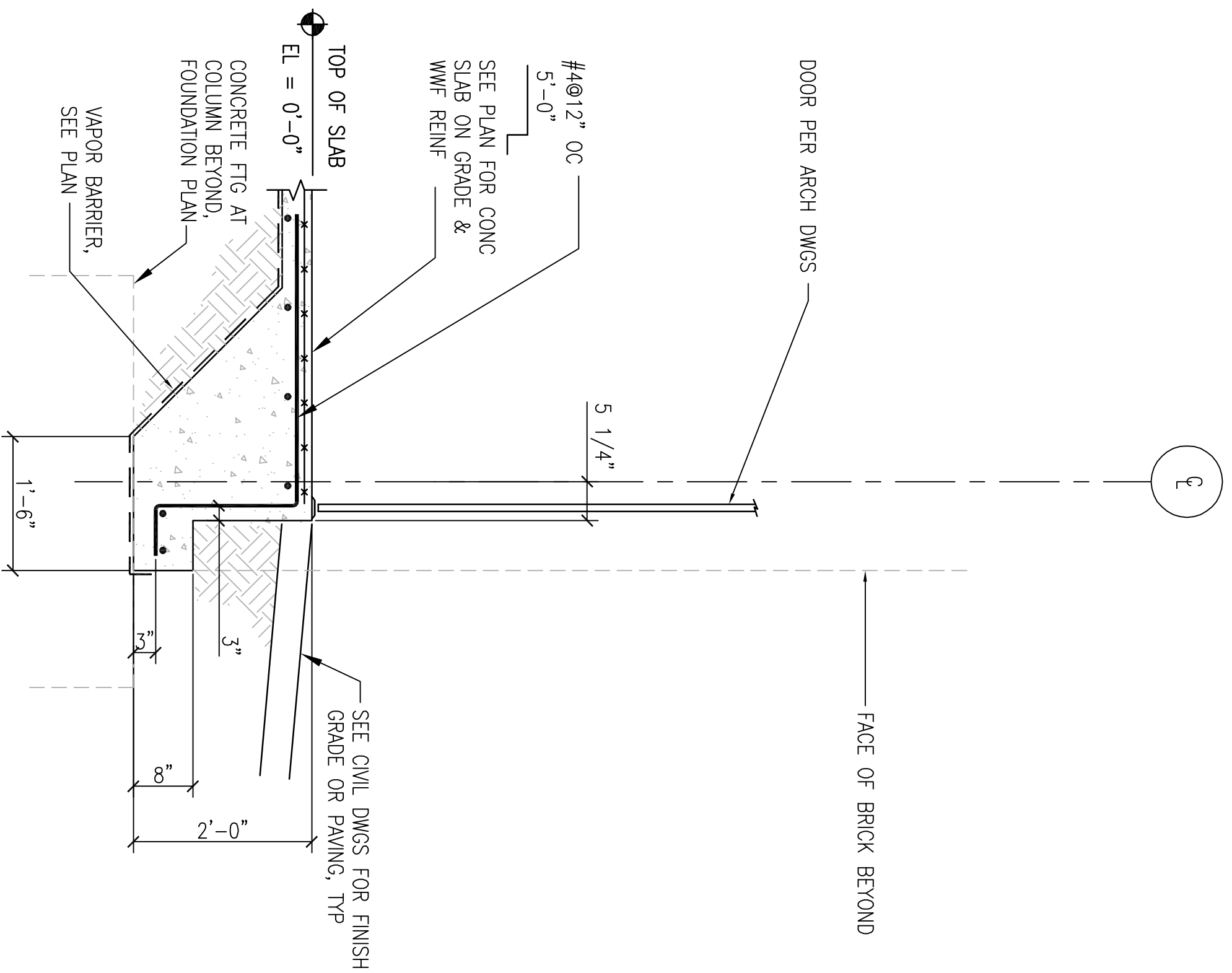
3 FOUNDATION SECTION AT STOREFRONT

SB101 SCALE: 3/4"=1'-0"



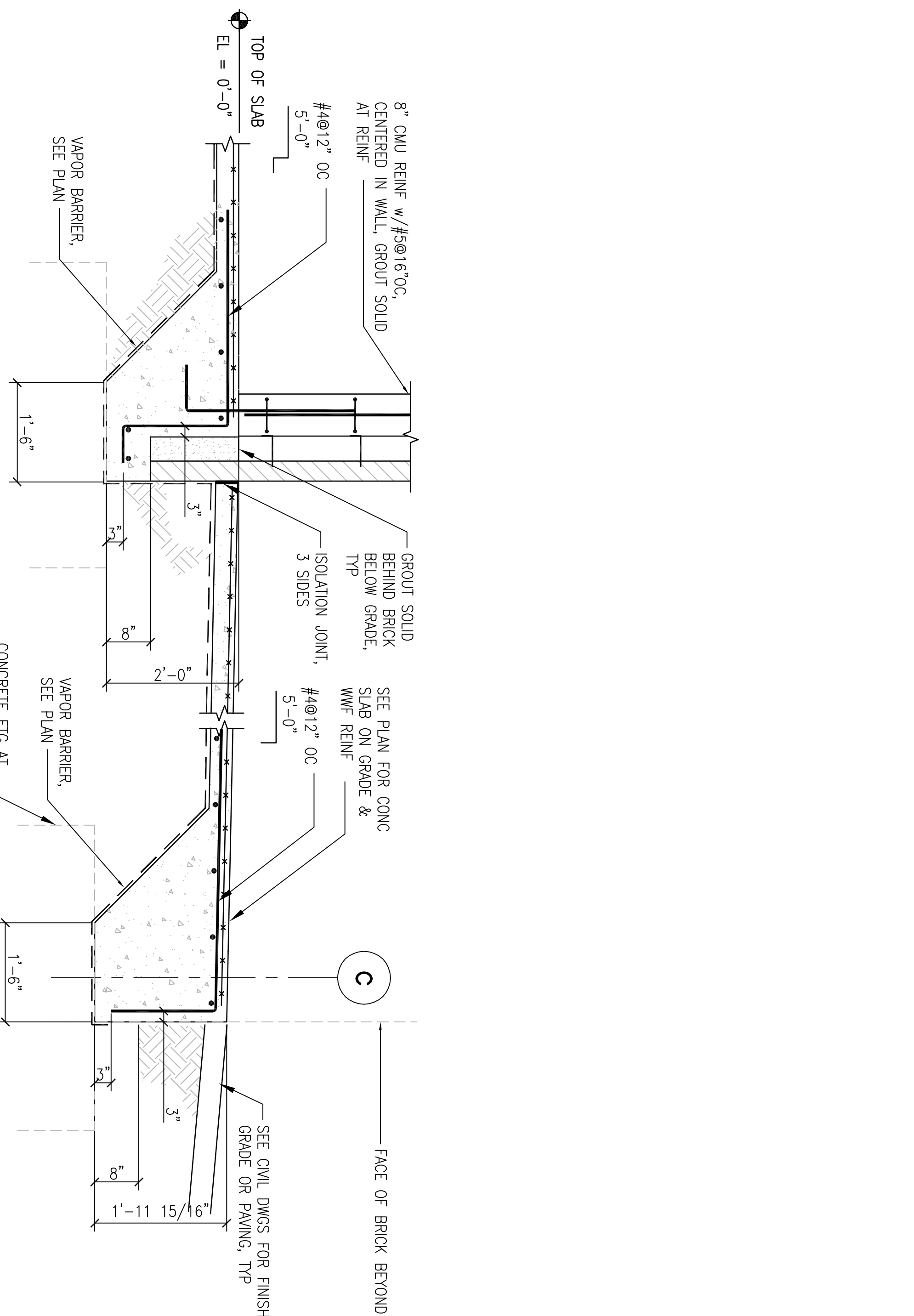
4 FOUNDATION SECTION AT SILL

SB101 SCALE: 3/4"=1'-0"



5 FOUNDATION SECTION AT STOREFRONT

SB101 SCALE: 3/4"=1'-0"



6 FOUNDATION SECTION AT LOADING AREA

SB101 SCALE: 3/4"=1'-0"

CONSULTANTS:

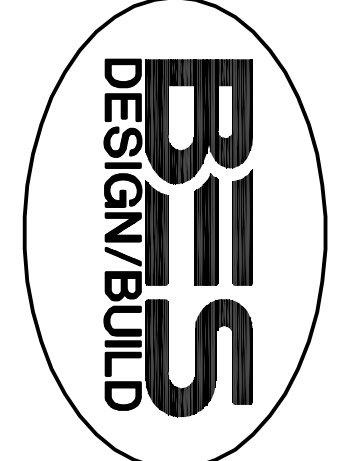
FOR CONSULTING ARCHITECTS:  
JON WORTH ARCHITECTS  
720 NORTH 1ST AVENUE  
SUITE 200  
FAIRHOPE, AL 36532  
PH: 850-471-8005  
FX: 850-471-8008

LANDSCAPE ARCHITECT:  
JON WORTH ARCHITECTS  
720 NORTH 1ST AVENUE  
SUITE 200  
FAIRHOPE, AL 36532  
PH: 850-471-8005  
FX: 850-471-8008

ARCHITECT/ENGINEERS:

FOR CONSULTING GROUP, INC.  
JON WORTH ARCHITECTS  
720 NORTH 1ST AVENUE  
SUITE 200  
FAIRHOPE, AL 36532  
PH: 850-471-8005  
FX: 850-471-8008

ARCHITECT/ENGINEERS:  
JON WORTH ARCHITECTS  
720 NORTH 1ST AVENUE  
SUITE 200  
FAIRHOPE, AL 36532  
PH: 850-471-8005  
FX: 850-471-8008



BES DESIGN/BUILD, LLC  
766 Middle St, Fairhope, AL 36532  
Phone: 251990.5778 Fax: 251990.3716

Drawing Title

FOUNDATION SECTIONS

Approved Project Director

Office of Construction and Facilities Management

Project Number  
520-326

Building Number  
-

Drawing Number  
SF301

DWG 10 of 17

