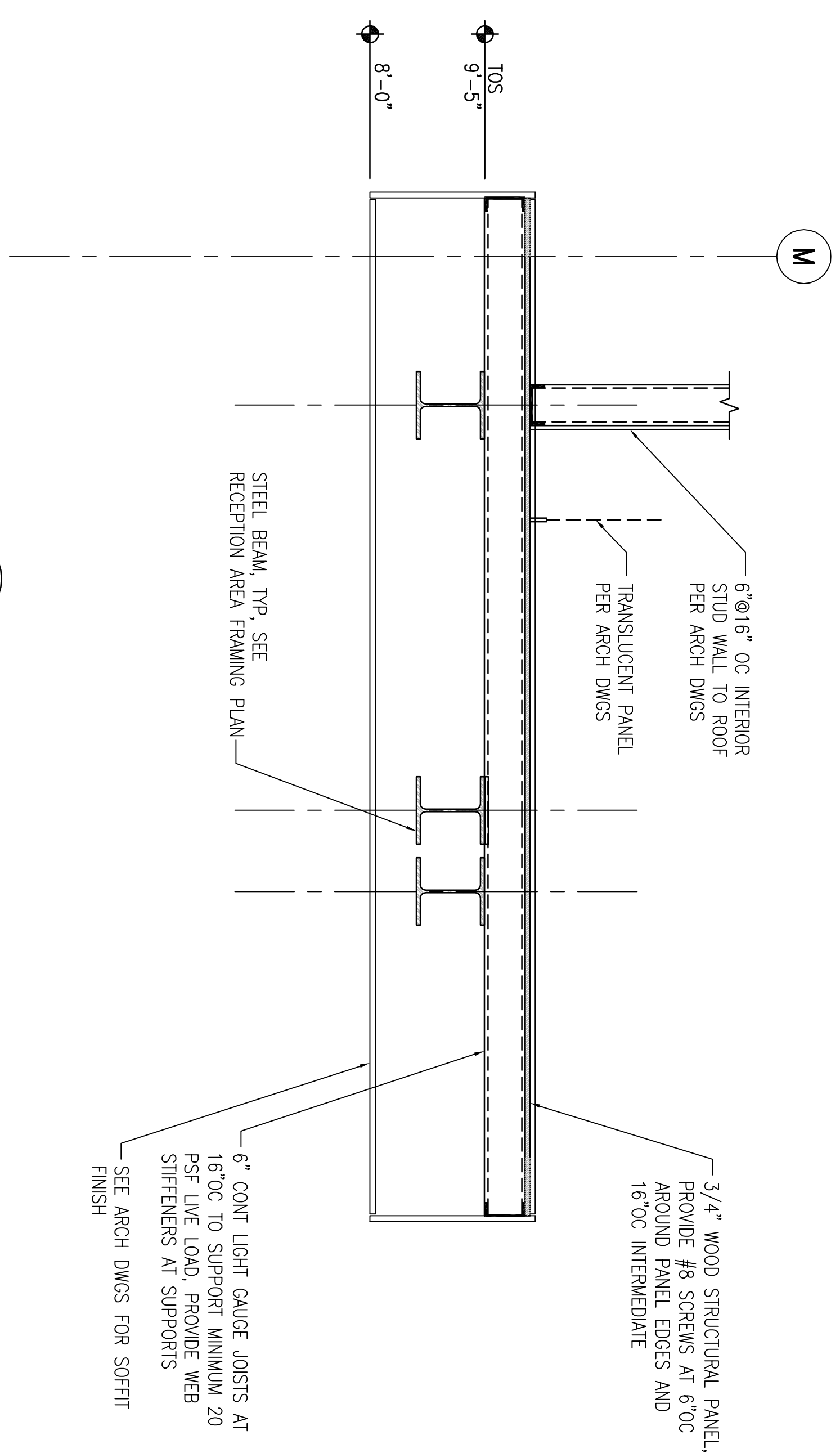
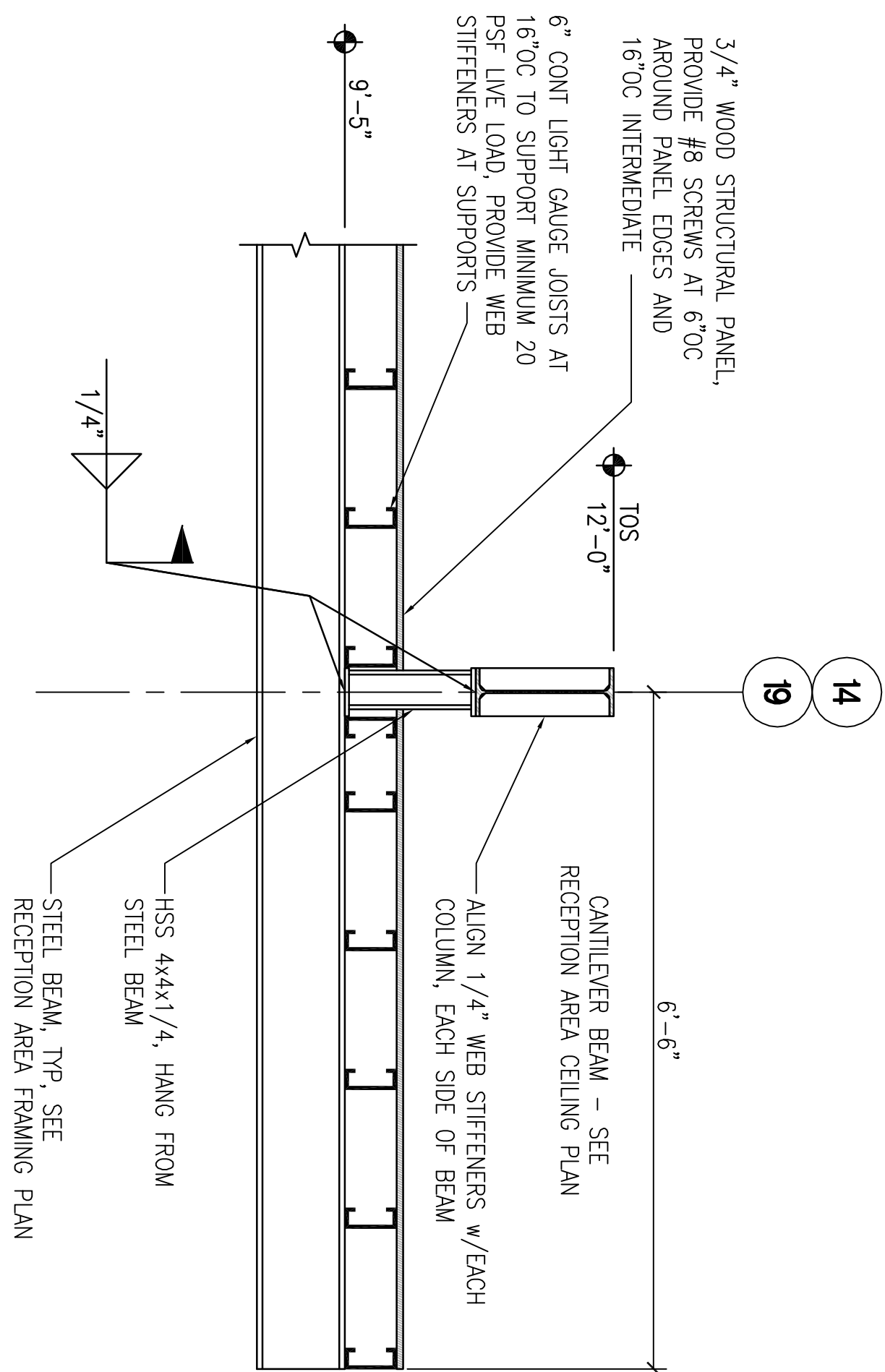


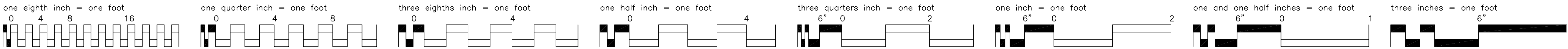
1 SECTION AT RECEPTION DESK CEILING
SF102 SCALE: 3/4" = 1'-0"



2 SECTION AT RECEPTION DESK CEILING
SF102 SCALE: 3/4" = 1'-0"



3 SECTION AT RECEPTION DESK CEILING
SF102 SCALE: 3/4"=1'-0"

[illegible]

CONSULTANTS:

CWIL
KENNETH HORNE & ASSOCIATES
7281 NORTH 8TH AVENUE
PENSACOLA, FLORIDA 32504
PH (850) 471-9005
FX (850) 471-0083

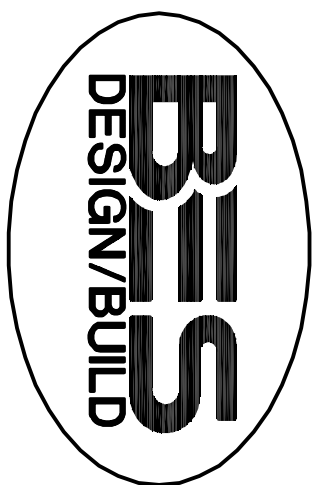
LANDSCAPE ARCHITECT:
CSA GROUP, INC.
6300 PROCDLY SQUARE DRIVE
MOBILE, ALABAMA 36606
PH (251) 344-0023
FX (251) 344-0052

COMMANDS:
SCHMIDT CONSULTING GROUP, INC.
139 EAST GOVERNMENT STREET
PENSACOLA, FLORIDA 32502
PH (850) 438-0030
FX (850) 432-8631

ARCHITECTURE:
BULLOCK TICE ASSOCIATES, INC.
809 EAST CRYSTAL STREET
PENSACOLA, FL 32501
PH (850) 434-6444
FX (850) 432-6208

SURVEYORS:
KCI TECHNOLOGIES, INC.
10401 HIGHLAND MANOR DRIVE, SUITE 1200
TAMPA, FLORIDA 33610
PH. (813) 740-2300

ARCHITECT/ENGINEERS:



BES DESIGN/BUILD, LLC
766 Middle St, Fairhope, AL 36532
Phone: 251.990.5778 Fax: 251.990.3716

Drawing Title	Project Title	
MISCELLANEOUS FRAMING SECTIONS	PANAMA CITY JOINT OUTPATIENT CLINIC VA GULF COAST HEALTH CARE	
Approved Project Director	Location	
	PANAMA CITY, FLORIDA	
Date	Checked	Drawn
MARCH 2012	NB	NB/KJM

Project Number	520-326
Building Number	-
Drawing Number	SF404
	Dwg. 15 of 17

FINAL SUBMISSION

Office of
Construction
and Facilities
Management

 Department of
Veterans Affairs