

NOTE: FRAME #2 OCCURS IN TWO LOCATIONS.

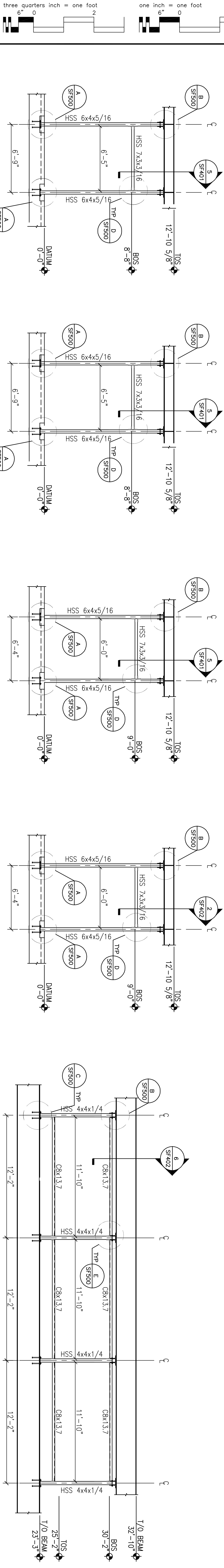
1 FRAME #1 ELEVATION
SF102 SCALE: 1/4"=1'-0"

2 FRAME #2 ELEVATION
SF102 SCALE: 1/4"=1'-0"

3 FRAME #3 ELEVATION
SF102 SCALE: 1/4"=1'-0"

4 FRAME #4 ELEVATION
SF102 SCALE: 1/4"=1'-0"

5 FRAME #5 ELEVATION
SF102 SCALE: 1/4"=1'-0"



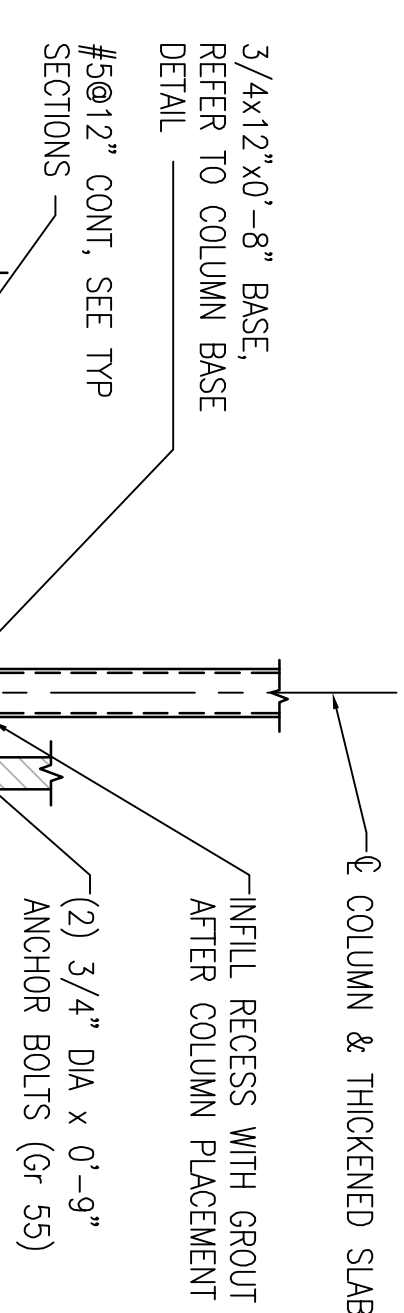
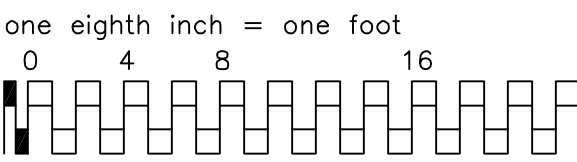
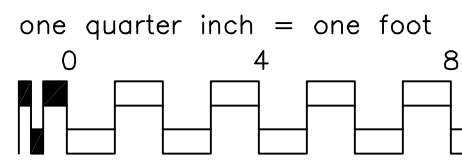
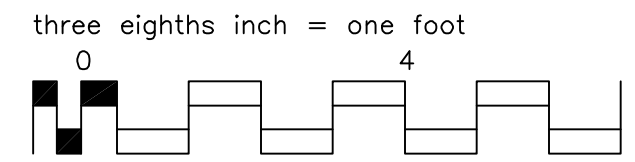
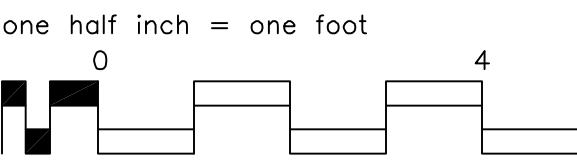
6 FRAME #6 ELEVATION
SF102 SCALE: 1/4"=1'-0"

7 FRAME #7 ELEVATION
SF102 SCALE: 1/4"=1'-0"

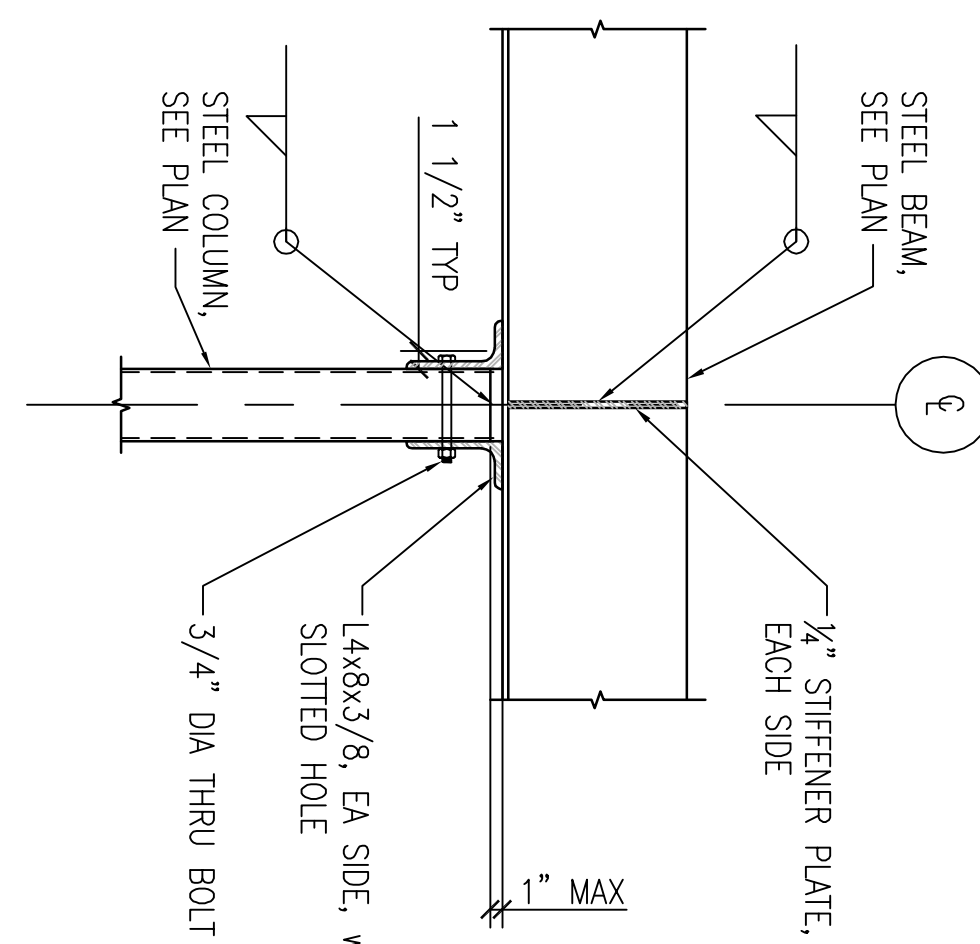
8 FRAME #8 ELEVATION
SF102 SCALE: 1/4"=1'-0"

9 FRAME #9 ELEVATION
SF102 SCALE: 1/4"=1'-0"

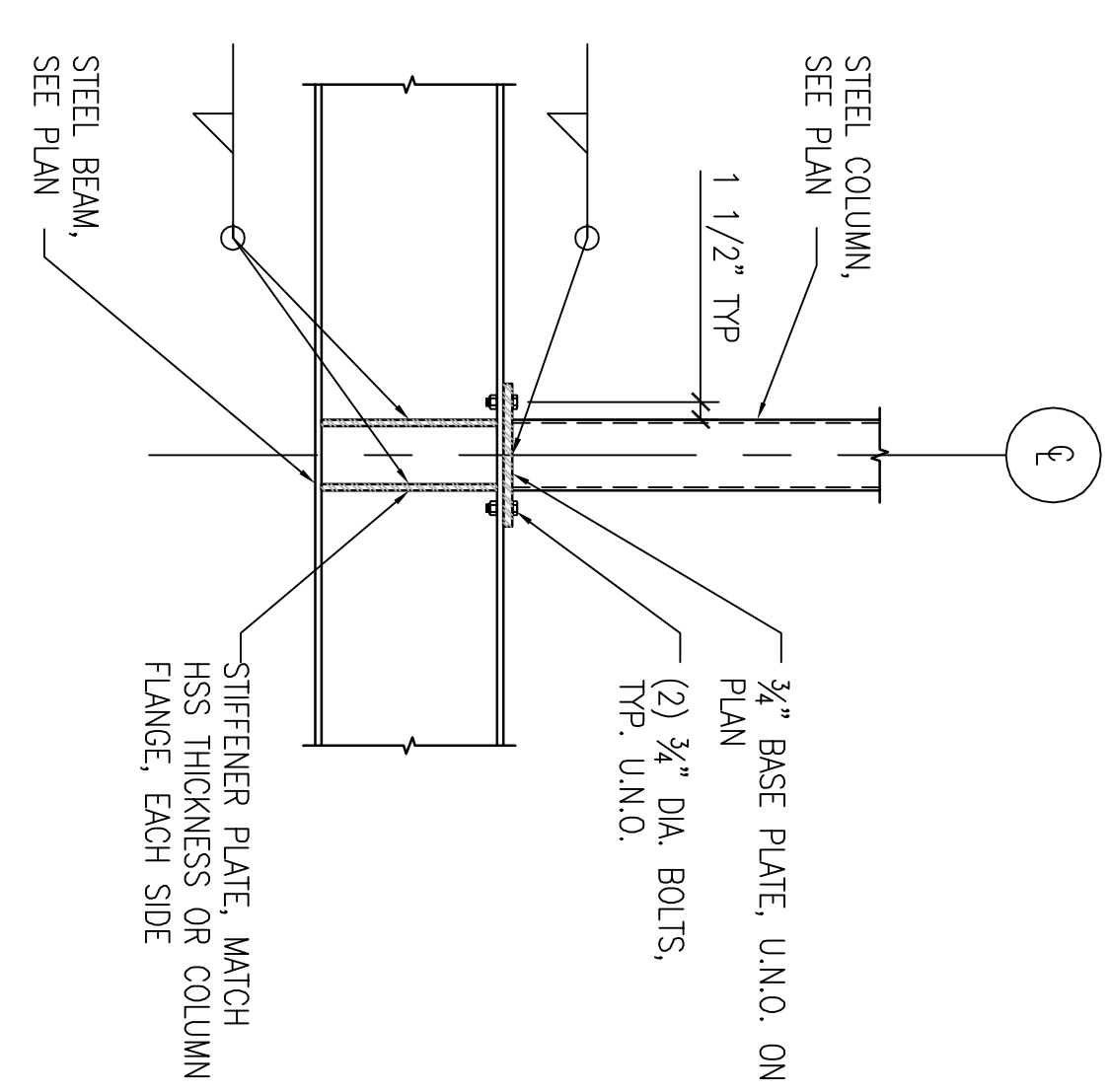
10 FRAME #10 ELEVATION
SF102 SCALE: 3/4"=1'-0"



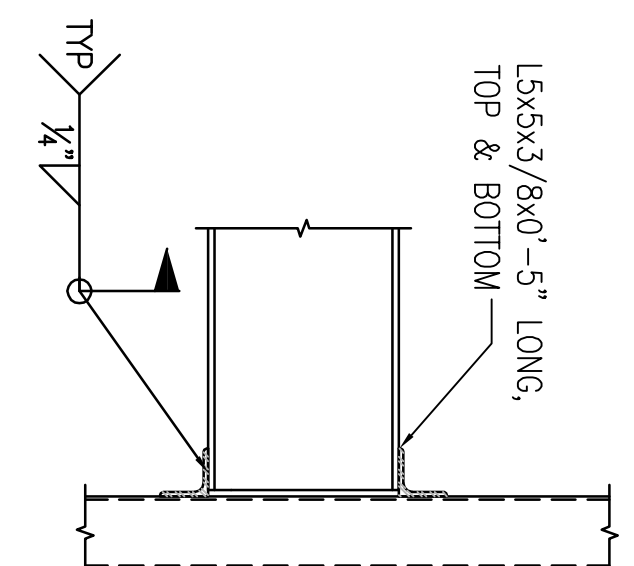
A TYPICAL FRAME POST BASE
SCALE: 1/2" = 1'-0"



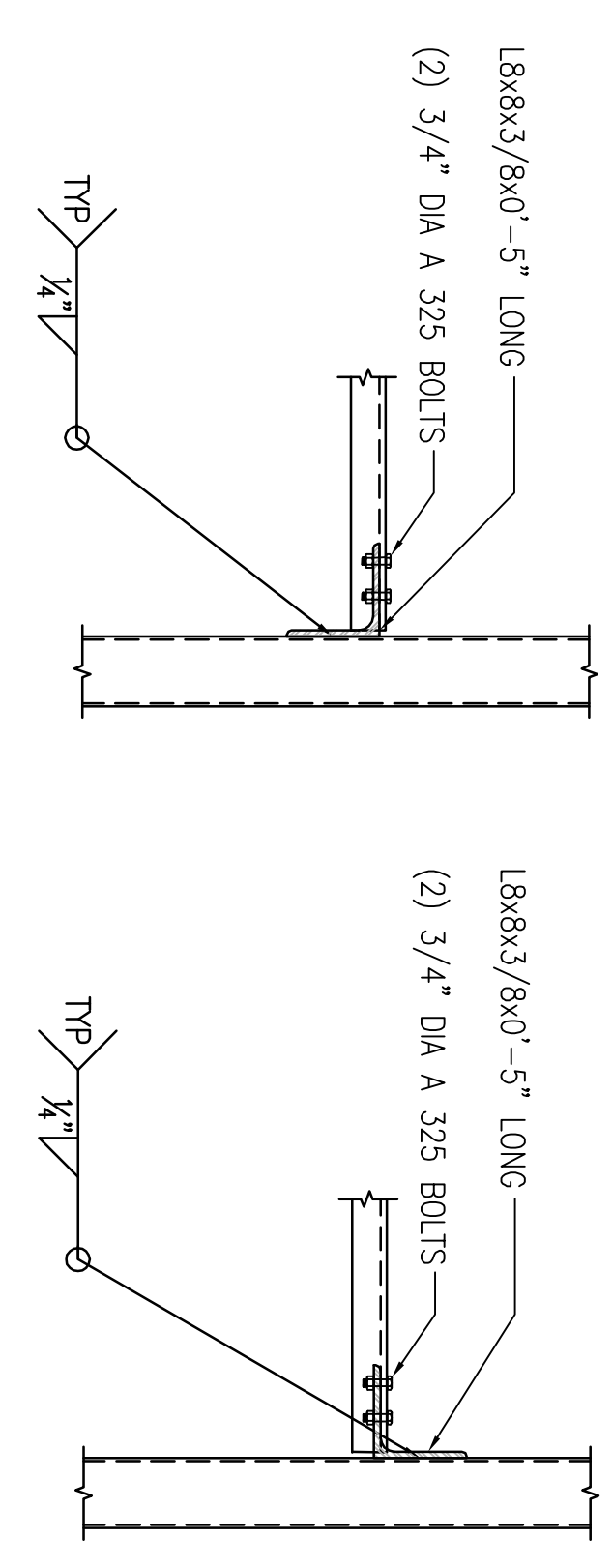
B TYPICAL FRAME POST CAP
SCALE: 3/4" = 1'-0"



C TYPICAL FRAME POST ON STEEL BEAM
SCALE: 3/4" = 1'-0"



D TYPICAL HSS BEAM CONNECTIONS
SCALE: 3/4" = 1'-0"



E TYPICAL CHANNEL CONNECTIONS
SCALE: 3/4" = 1'-0"

FINAL SUBMISSION

CONSULTANTS:		ARCHITECT/ENGINEERS:	
CONSULTANTS: GRIFFIN, HARRIS & ASSOCIATES 720 NORTH 7TH AVENUE SUITE 200 FORT WORTH, TEXAS 76102 PH: 817-335-1100 FAX: 817-335-1101		ARCHITECT/ENGINEERS: BES DESIGN/BUILD, LLC 766 MIDDLE ST., FAIRHOPE, AL 36532 PHONE: 251-980-5778 FAX: 251-980-3716	
PROJECT INFORMATION: PROJECT NAME: JOINT OUTPATIENT CLINIC LOCATION: PANAMA CITY, FLORIDA DATE: MARCH 2012 DESIGNER: SF500 DRAWN: Dwg 16 of 17		PROJECT INFORMATION: PROJECT NAME: JOINT OUTPATIENT CLINIC LOCATION: PANAMA CITY, FLORIDA DATE: MARCH 2012 DESIGNER: SF500 DRAWN: Dwg 16 of 17	
DATE: _____		DATE: _____	