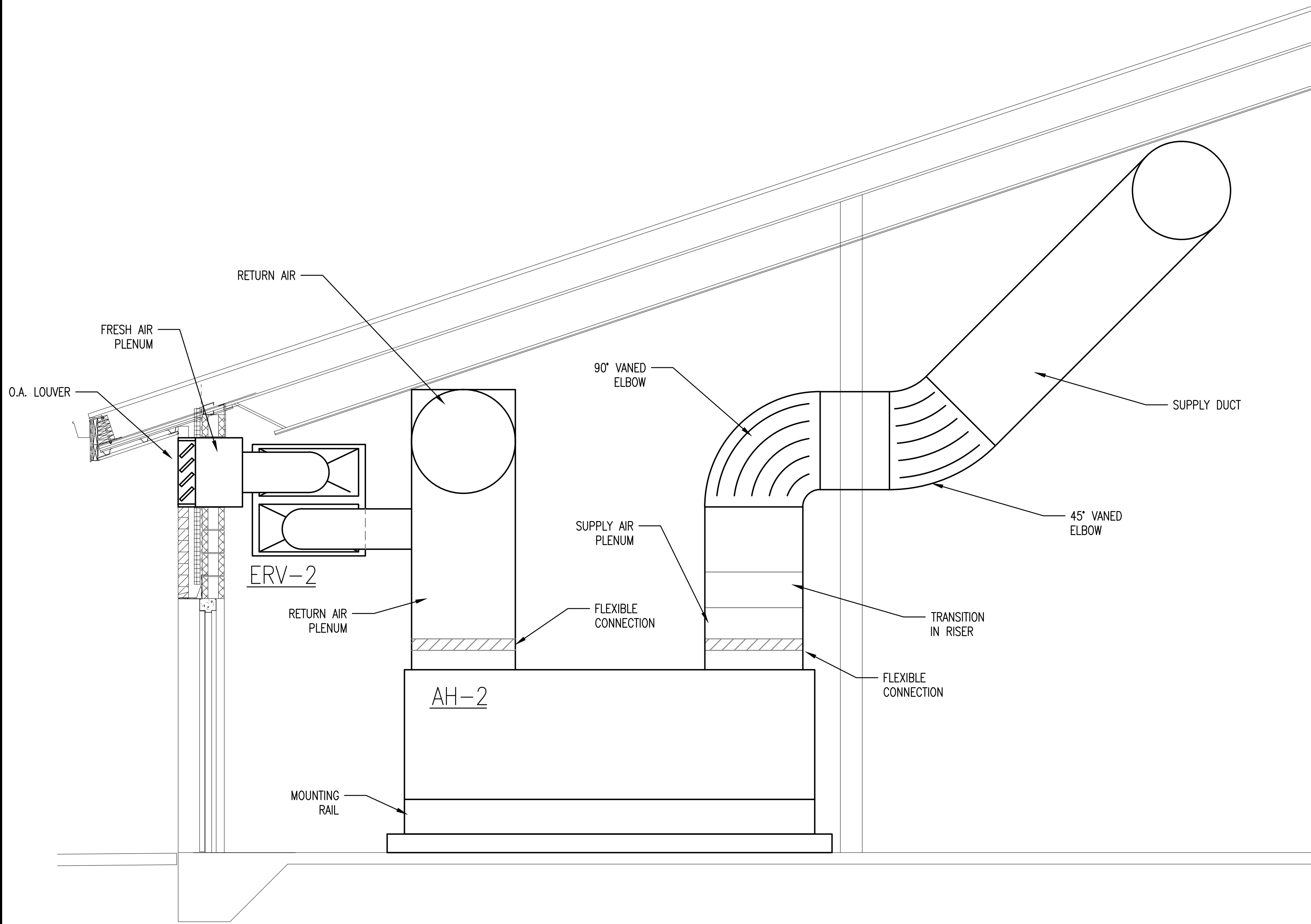
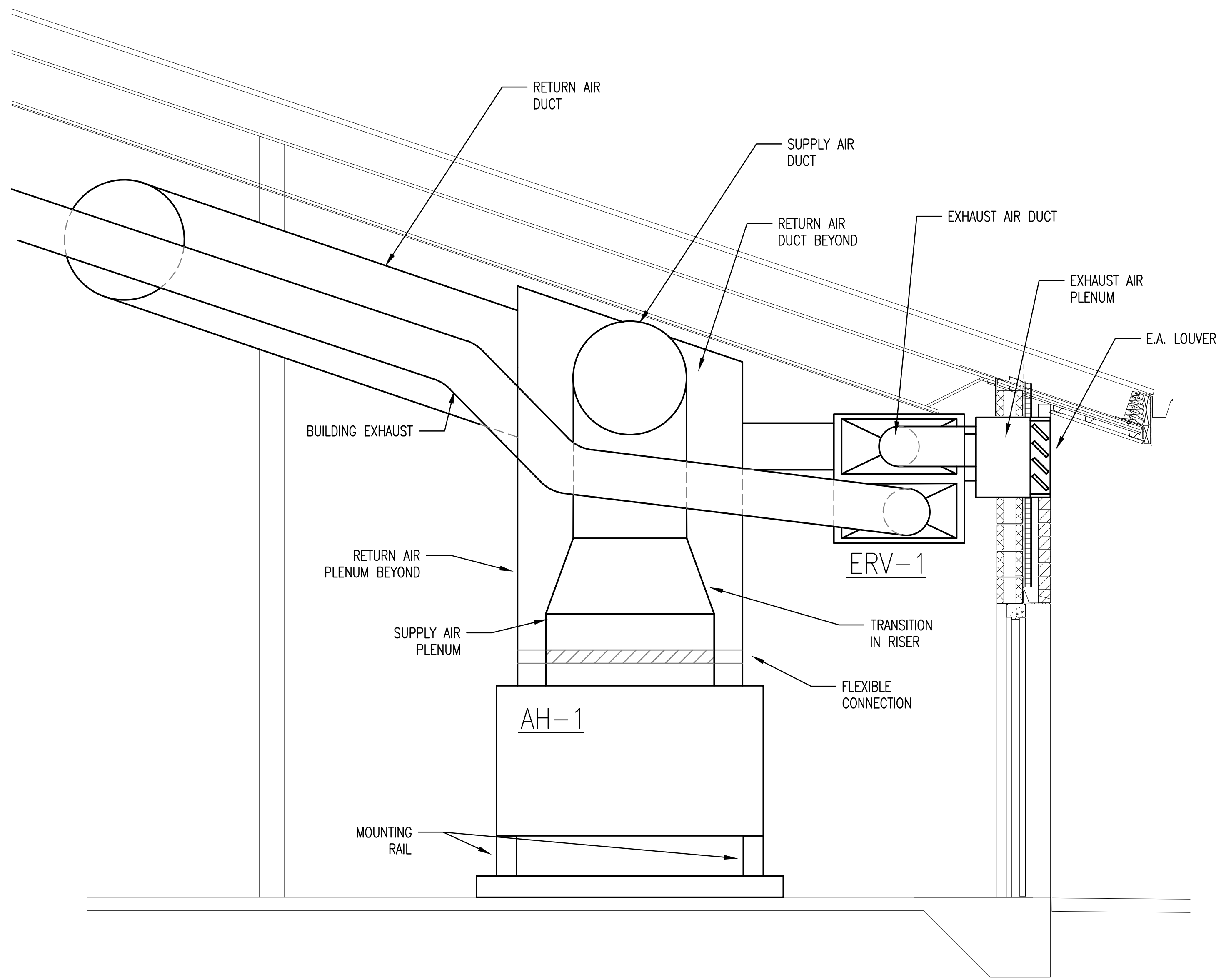


three inches = one foot  
one and one half inches = one foot  
one inch = one foot  
three quarters inch = one foot  
one half inch = one foot  
three eighths inch = one foot  
one quarter inch = one foot  
one eighth inch = one foot



1 MECHANICAL PLAN - MECHANICAL ROOM SECTION  
SCALE: 1/2" = 1'-0"



2 MECHANICAL PLAN - MECHANICAL ROOM SECTION  
SCALE: 1/2" = 1'-0"

**NOTE:**

BASE BID:  
GEOTHERMAL SYSTEM WITH WATER COOLED  
CHILLER, WATER TO WATER HEAT PUMPS,  
ASSOCIATED PUMPS, PIPING AND  
CONTROLS.

BID ITEM 002:  
MECHANICAL COOLING TOWER AND BOILER  
SYSTEM WITH WATER COOLED CHILLER,  
WATER TO WATER HEAT PUMPS,  
ASSOCIATED PUMPS, PIPING AND  
CONTROLS.

FINAL SUBMISSION

<b>CONSULTANTS:</b>		<b>ARCHITECT/ENGINEERS:</b>		<b>Drawing Title</b> MECHANICAL SECTIONS		<b>Project Title</b> PANAMA CITY JOINT OUTPATIENT CLINIC VA GULF COAST HEALTH CARE		<b>Project Number</b> 520-326		<b>Office of Construction and Facilities Management</b>  Department of Veterans Affairs
<b>CIVIL:</b> KENNETH HORNE & ASSOCIATES 7201 NORTH 6TH AVENUE, STE. 6 PENSACOLA, FLORIDA 32504 PH (850) 471-9005 FX (850) 471-0095		<b>COMPUTER:</b> SCHMITT CONSULTING GROUP, INC. 40 S. PALAFOX PLACE, STE. 300 PENSACOLA, FLORIDA 32502 PH (850) 438-0050 FX (850) 432-8551		<b>SURVEYORS:</b> RCI TECHNOLOGIES, INC. 10401 HIGHLAND MANOR DRIVE, SUITE 120 TAMPA, FLORIDA 33610 PH (813) 740-2300		<b>Location</b> PANAMA CITY, FLORIDA		<b>Building Number</b> -		
<b>LANDSCAPE ARCHITECT:</b> CSA GROUP, INC. 6300 PICCADILLY SQUARE DRIVE MOBILE, ALABAMA 36609 PH (251) 344-4233 FX (251) 344-4052		<b>ARCHITECTURE:</b> BULLOCK TICE ASSOCIATES, INC. 609 EAST CERVANTES STREET PENSACOLA, FL 32501 PH (850) 438-5444 FX (850) 432-8208		<b>BES DESIGN/BUILD LLC</b> No. 29795		<b>Date</b> 16 APRIL 2012		<b>Checked</b> RL	<b>Drawn</b> RL	
<b>Revisions:</b>		<b>Date</b>		<b>Approved Project Director</b>		<b>MH003</b> Dwg. 4 of 13				