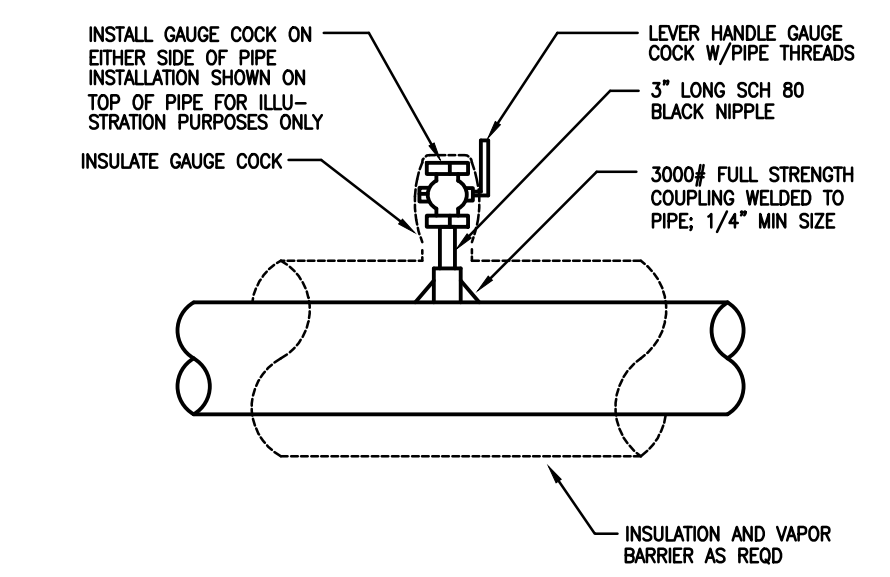
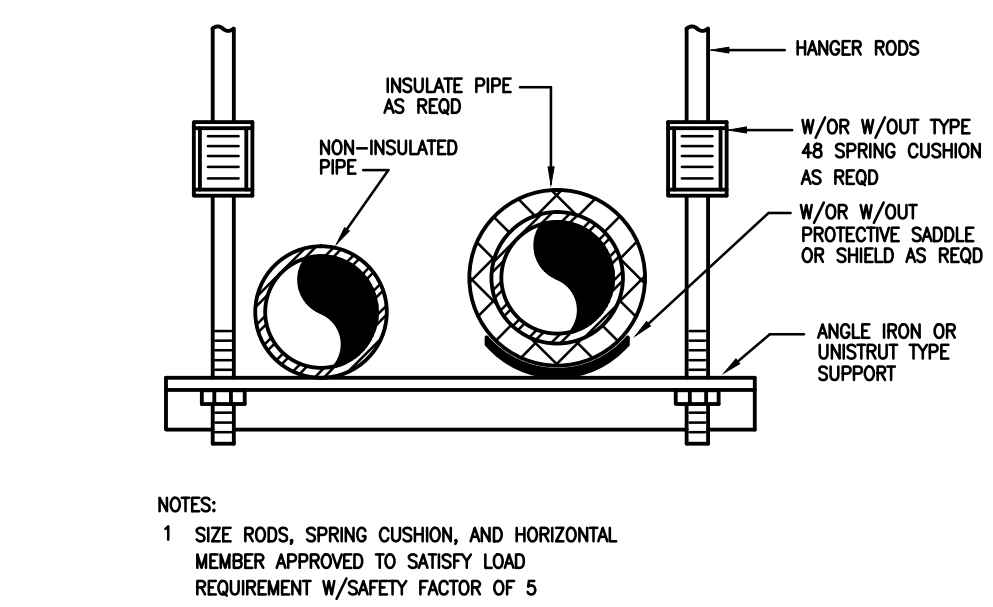
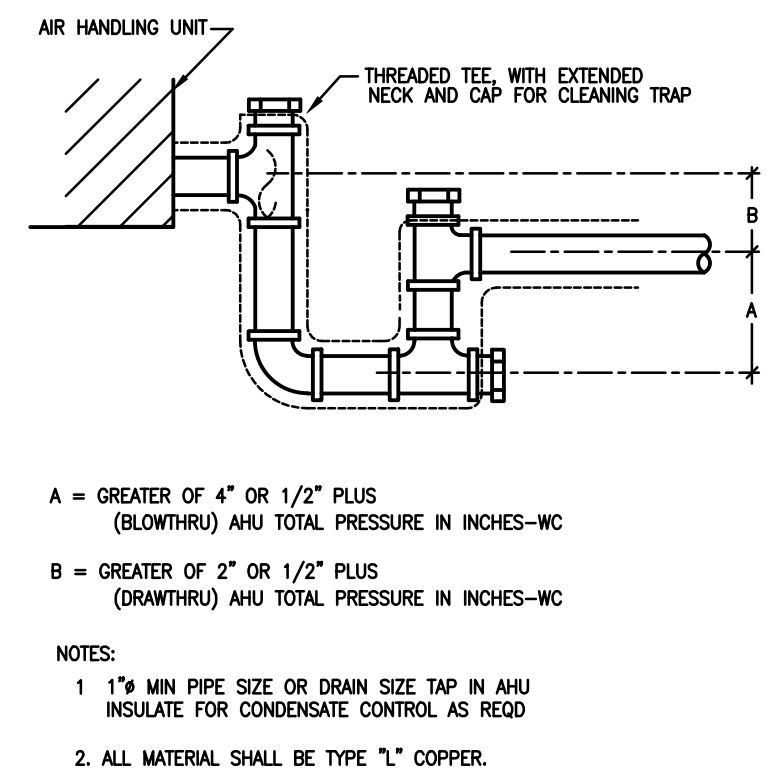
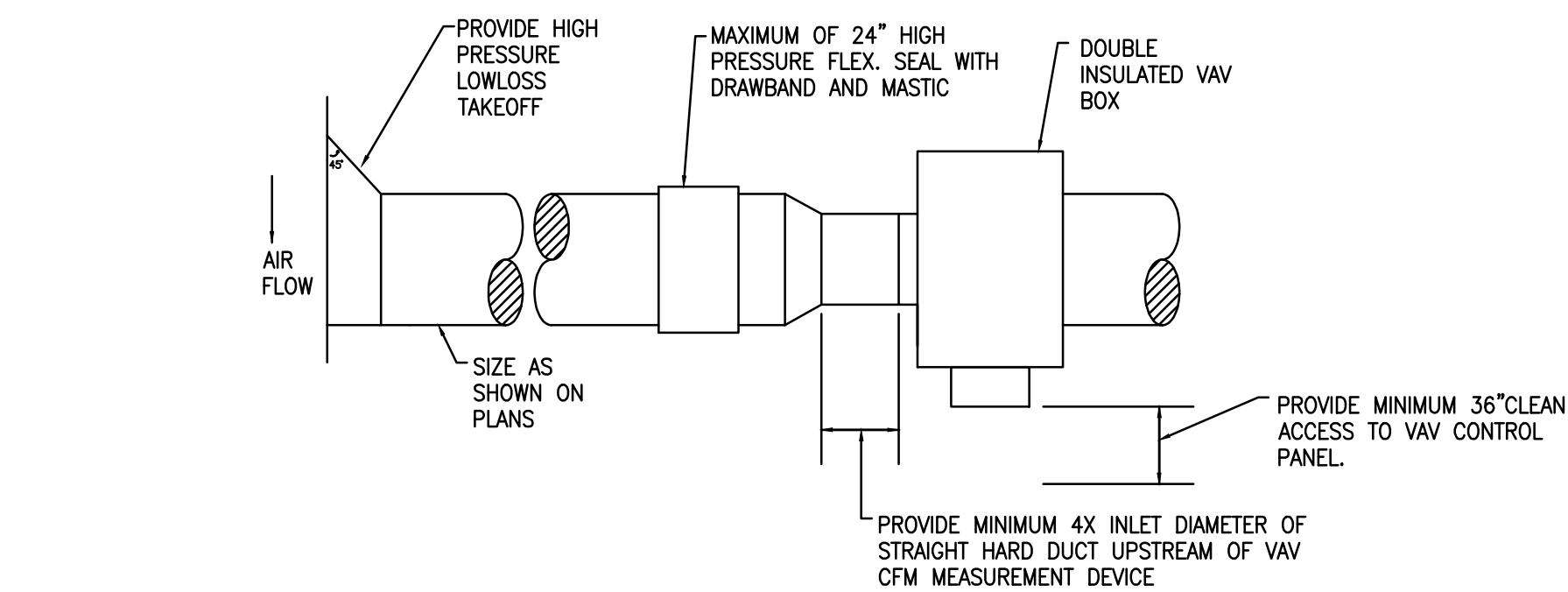
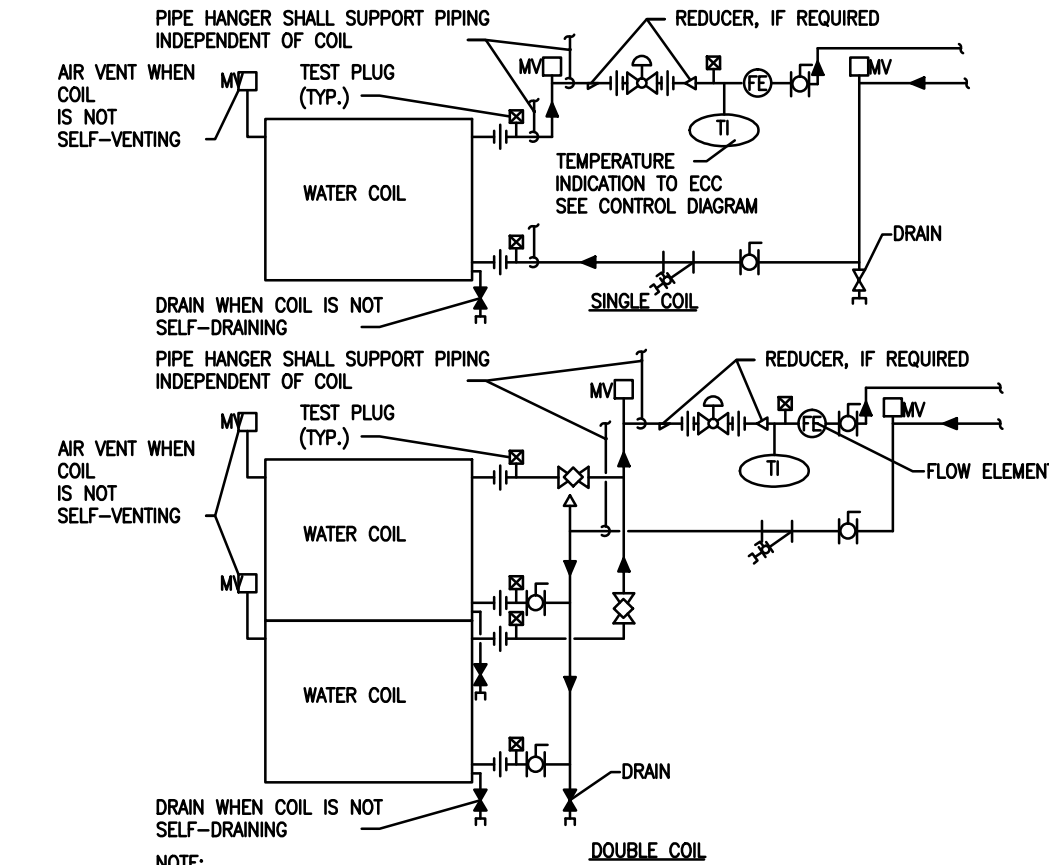
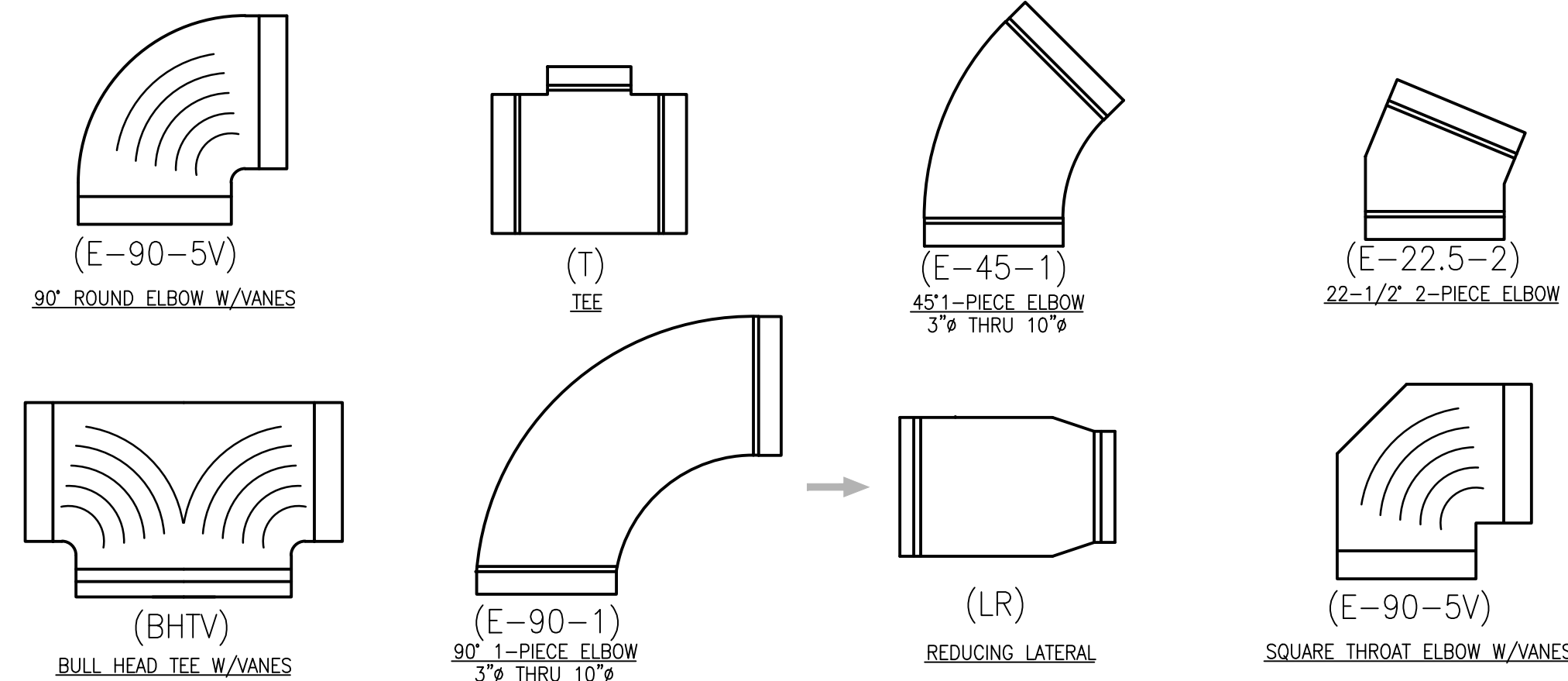
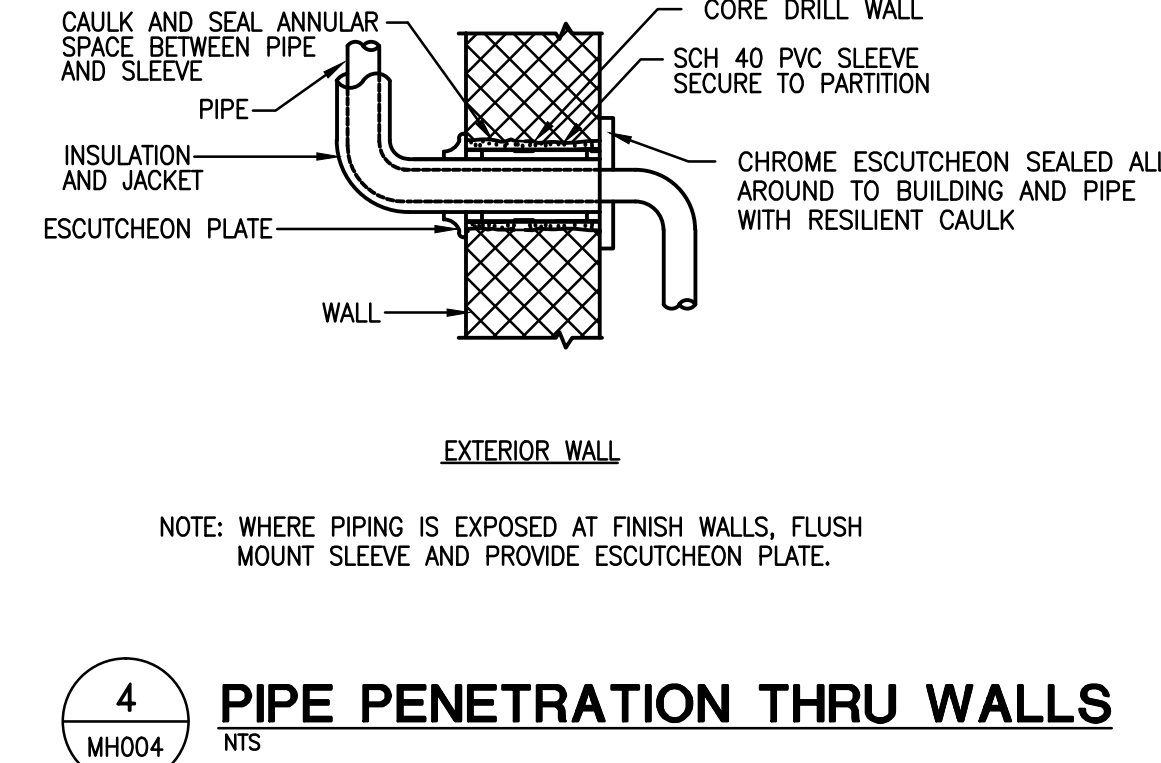
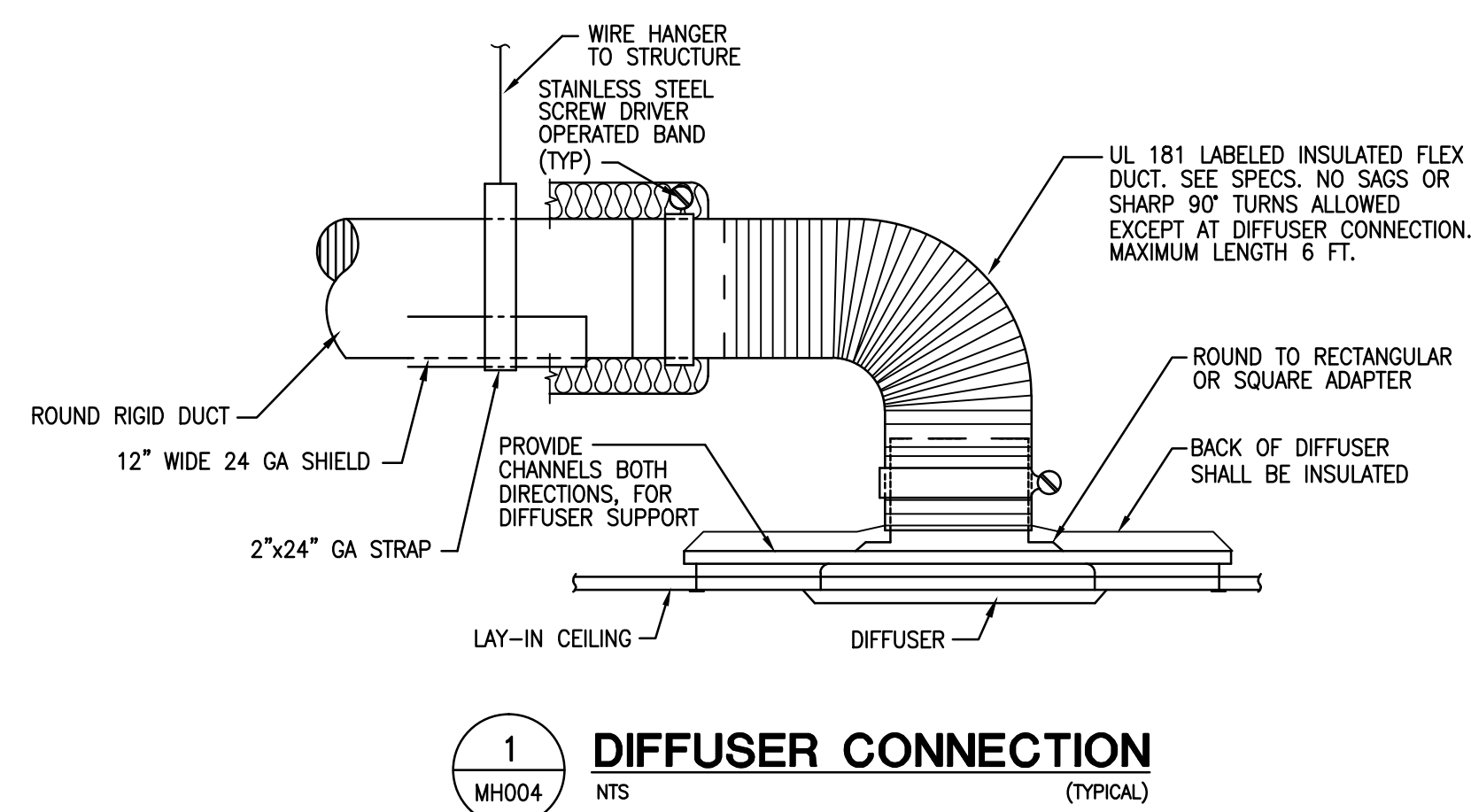
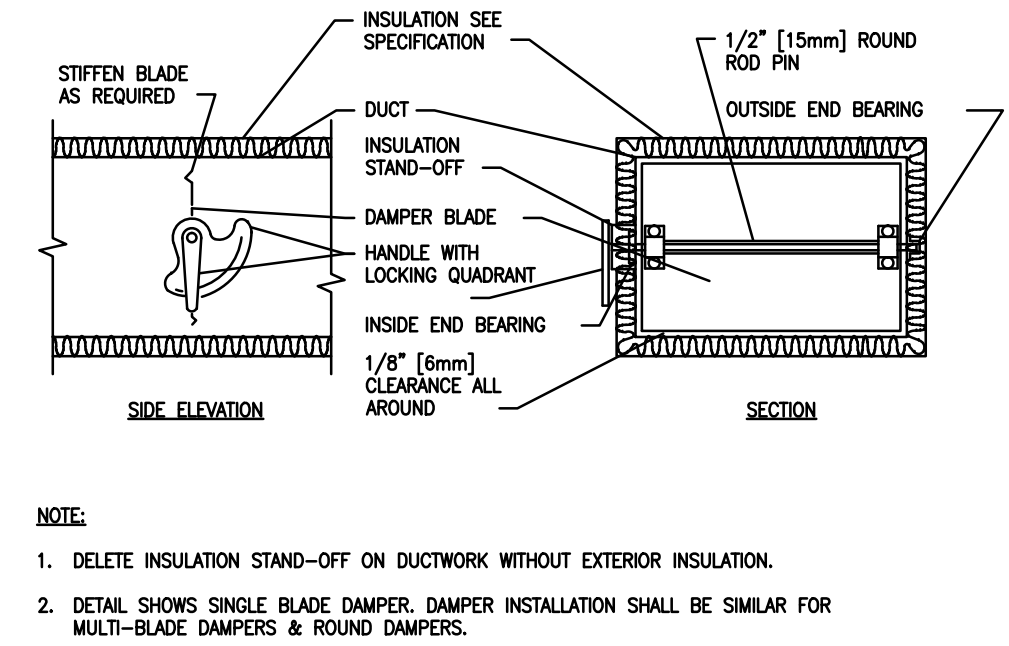
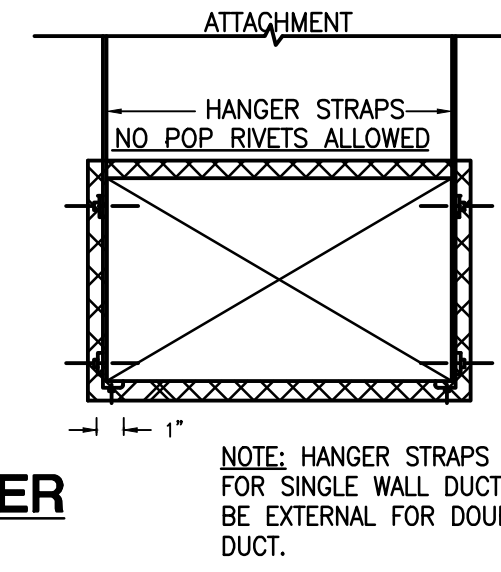


NO. 10x3/4\"/>

HANGER SIZES FOR RECTANGULAR DUCT			
MAX. SIDE	HANGER	HORIZONTAL SUPPORT ANGLE	MAXIMUM SPACING
UP TO 34"	1" X 18 GAUGE STRAP	NONE REQUIRED	6'-0"
34" TO 40"	1" X 18 GAUGE STRAP	NONE REQUIRED	6'-0"

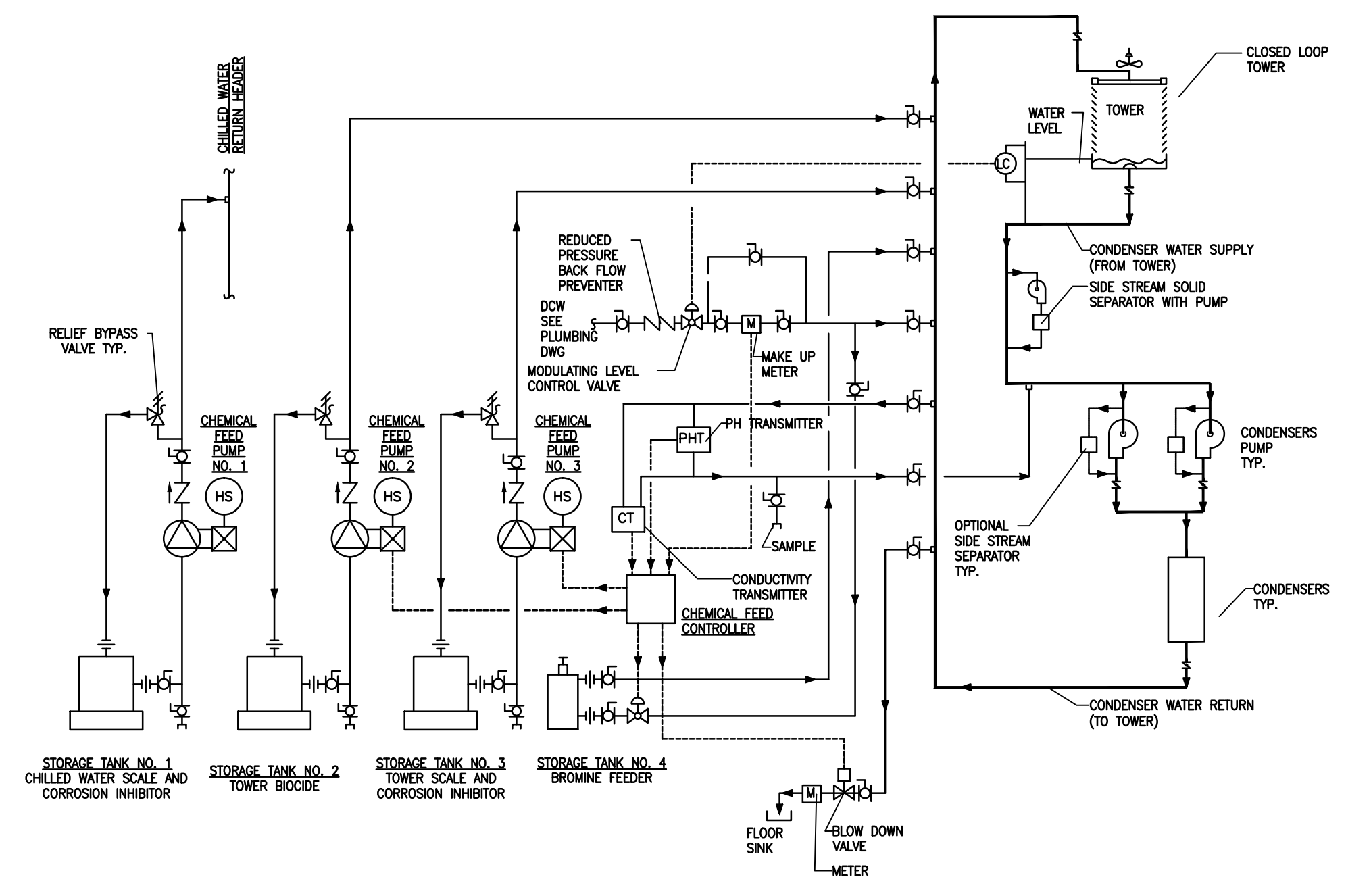


**6 VARIABLE AIR VOLUME SINGLE DUCT ON FP BOX (VAV BOX)**  
SCALE: NTS

**7 CONDENSATE DRAIN TRAP**  
NTS

**8 TRAPEZE TYPE PIPE SUPPORT**  
NTS

**9 GAUGE COCK INSTALLATION**  
NTS



**11 WATER TREATMENT SYSTEM-COOLING TOWER**  
NTS

<b>CONSULTANTS:</b> CIVIL: KENNETH HORNE & ASSOCIATES 7201 NORTH 9TH AVENUE, STE. 8 PENSACOLA, FLORIDA 32504 PH: (850) 471-9005 FX: (850) 471-0093 LANDSCAPE ARCHITECT: CBA GROUP, INC. 6800 PICCADILLY SQUARE DRIVE MOBILE, ALABAMA 36608 PH: (251) 344-4023 FX: (251) 344-4082		<b>COMMENTS:</b> SCHMIDT CONSULTING GROUP, INC. 40 S. PALMARIA PLACE, STE. 300 PENSACOLA, FLORIDA 32502 PH: (850) 438-0050 FX: (850) 438-0051 ARCHITECTURE: BILLOCK TICE ASSOCIATES, INC. 909 EAST CERVANTES STREET PENSACOLA, FL 32501 PH: (850) 434-5444 FX: (850) 432-6208		<b>SURVEYORS:</b> KCI TECHNOLOGIES, INC. 10401 MIDLAND MANOR DRIVE, SUITE 120 TAMPA, FLORIDA 33610 PH: (813) 740-2300		<b>ARCHITECT/ENGINEERS:</b> BES DESIGN/BUILD LLC 766 Middle St, Fairhope, AL 36532 Phone: 251.990.5778 Fax: 251.990.3716		<b>Drawing Title:</b> MECHANICAL DETAILS		<b>Project Title:</b> PANAMA CITY JOINT OUTPATIENT CLINIC VA GULF COAST HEALTH CARE		<b>Project Number:</b> 520-326		<b>Office of Construction and Facilities Management</b> Department of Veterans Affairs	
<b>Revisions:</b>		<b>Date:</b>		<b>Approved Project Director:</b>		<b>Location:</b> PANAMA CITY, FLORIDA		<b>Date:</b> 16 APRIL 2012		<b>Checked:</b> RL		<b>Drawn:</b> RL		<b>Drawing Number:</b> MH004	
												Dwg. 5 of 13			

FINAL SUBMISSION