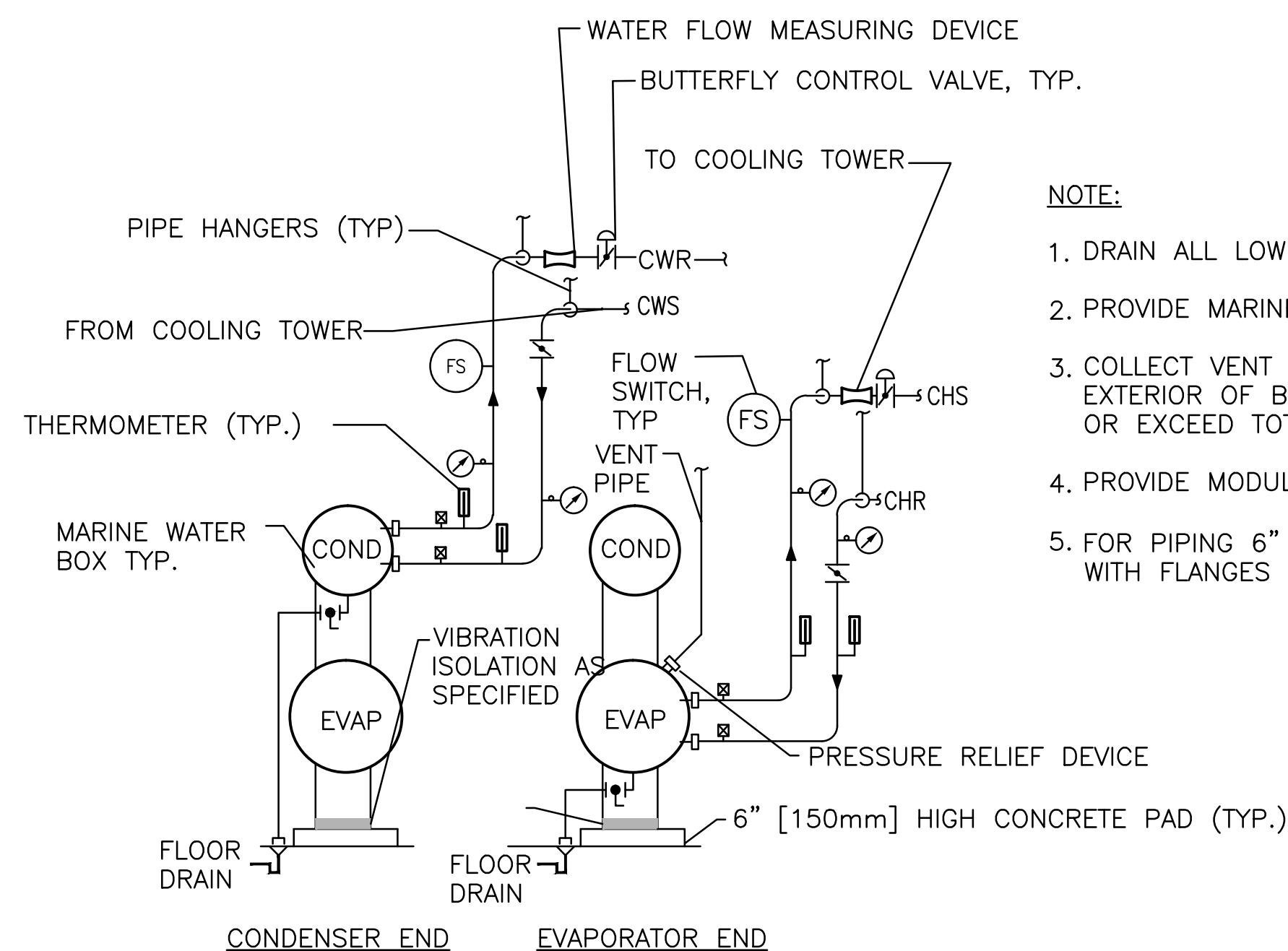
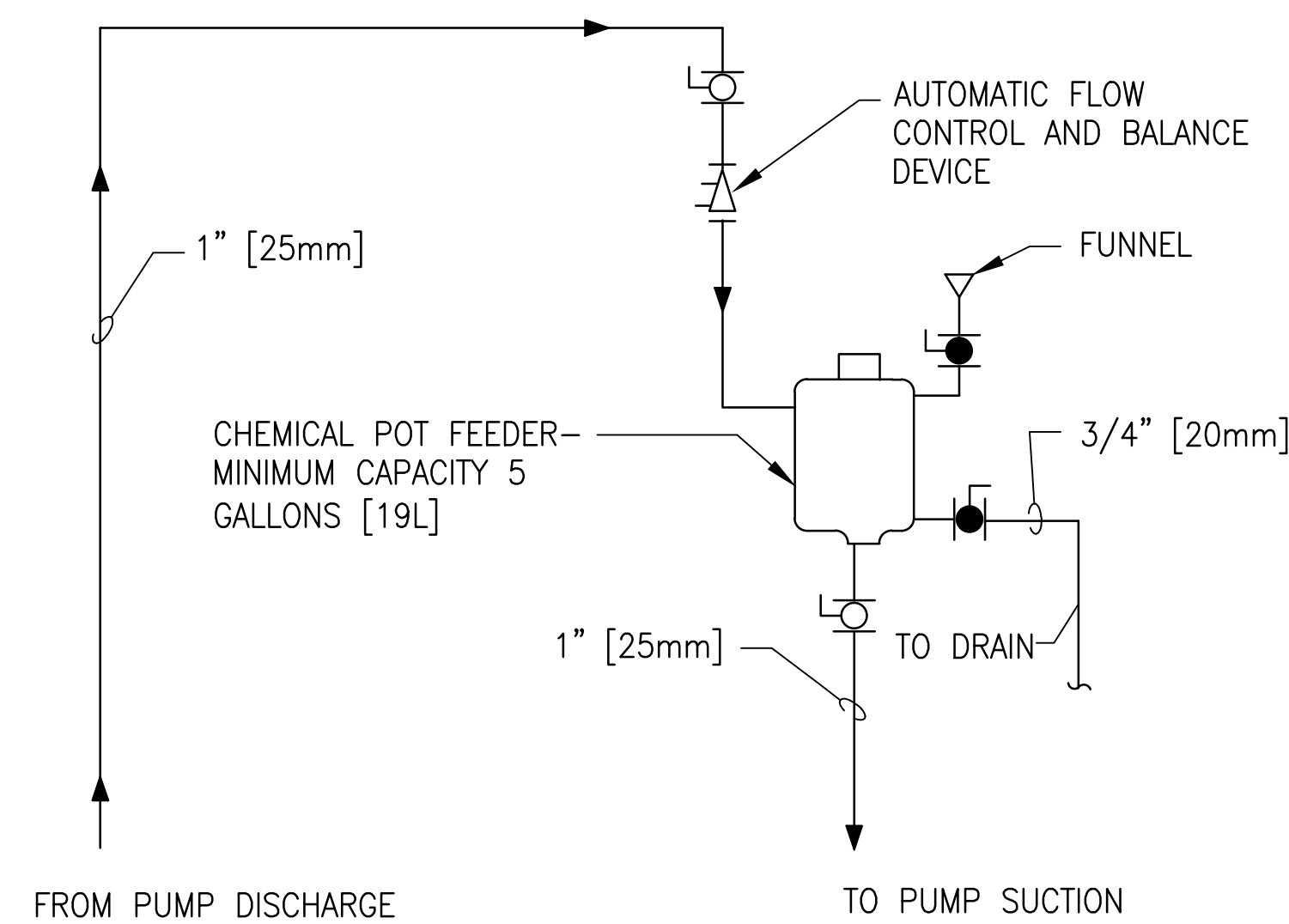


BID ITEM 002:
MECHANICAL COOLING TOWER AND BOILER
SYSTEM WITH WATER COOLED CHILLER,
WATER TO WATER HEAT PUMPS,
ASSOCIATED PUMPS, PIPING AND
CONTROLS.

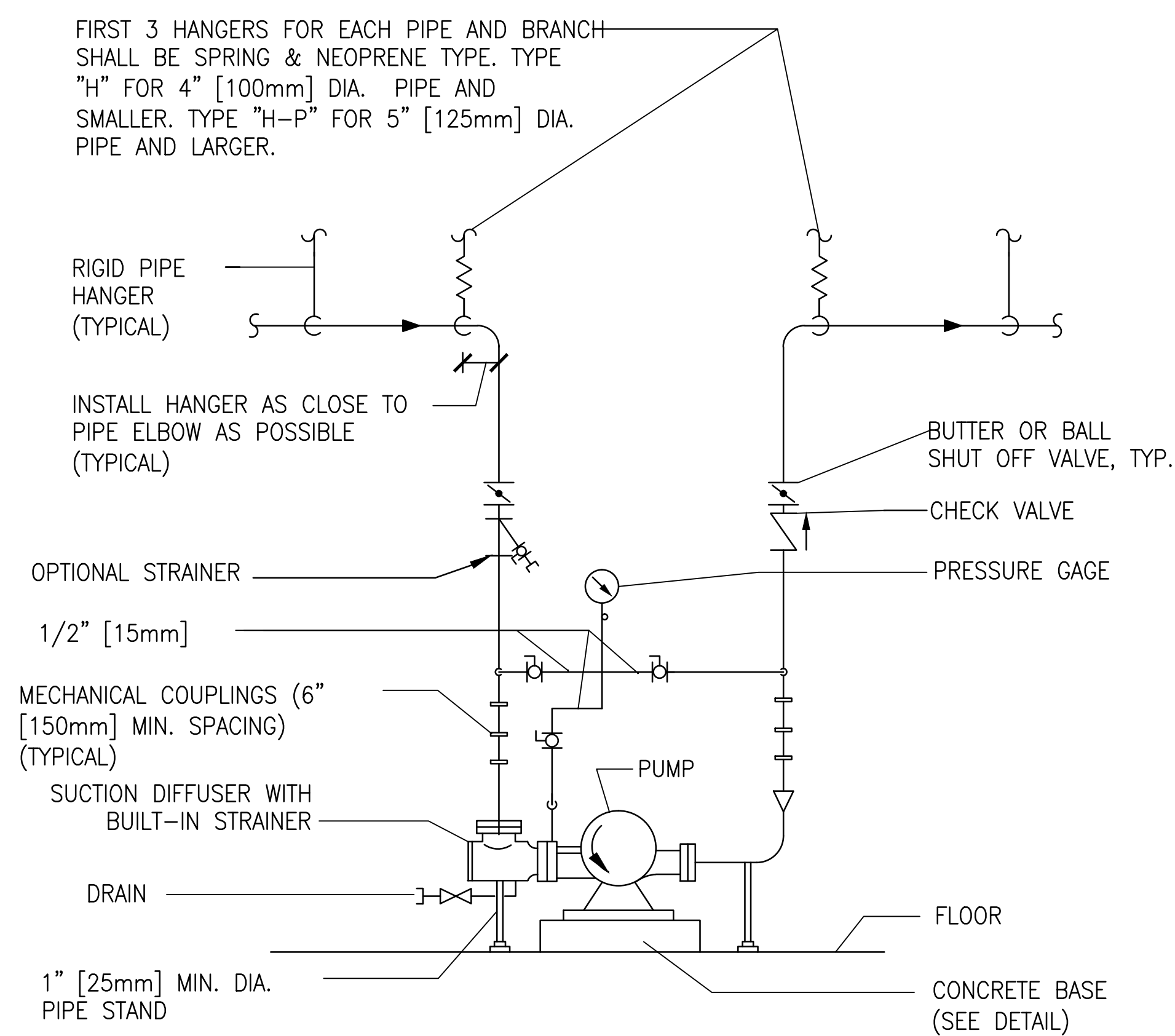


NOTE:

1. DRAIN ALL LOW POINTS OF SYSTEMS TO NEAREST FLOOR DRAIN.
2. PROVIDE MARINE WATER BOXES FOR BOTH CONDENSER AND EVAPORATOR.
3. COLLECT VENT PIPES FROM ALL REFRIGERANT PRESSURE RELIEF DEVICES AND EXTEND TO EXTERIOR OF BUILDING IN ACCORDANCE WITH ASHRAE STANDARD 15. HEADER SIZE TO EQUAL OR EXCEED TOTAL AREA OF DEVICES CONNECTED TO THE HEADER.
4. PROVIDE MODULATING BUTTERFLY VALVES ON BOTH CHWR & CWR. VALVES CONTROLLED BY ECC.
5. FOR PIPES 6" AND BELOW, MECHANICAL COUPLINGS ARE OPTIONAL. ABOVE 6", WELDED PIPE WITH FLANGES IS THE ONLY APPROVED JOINING METHOD.



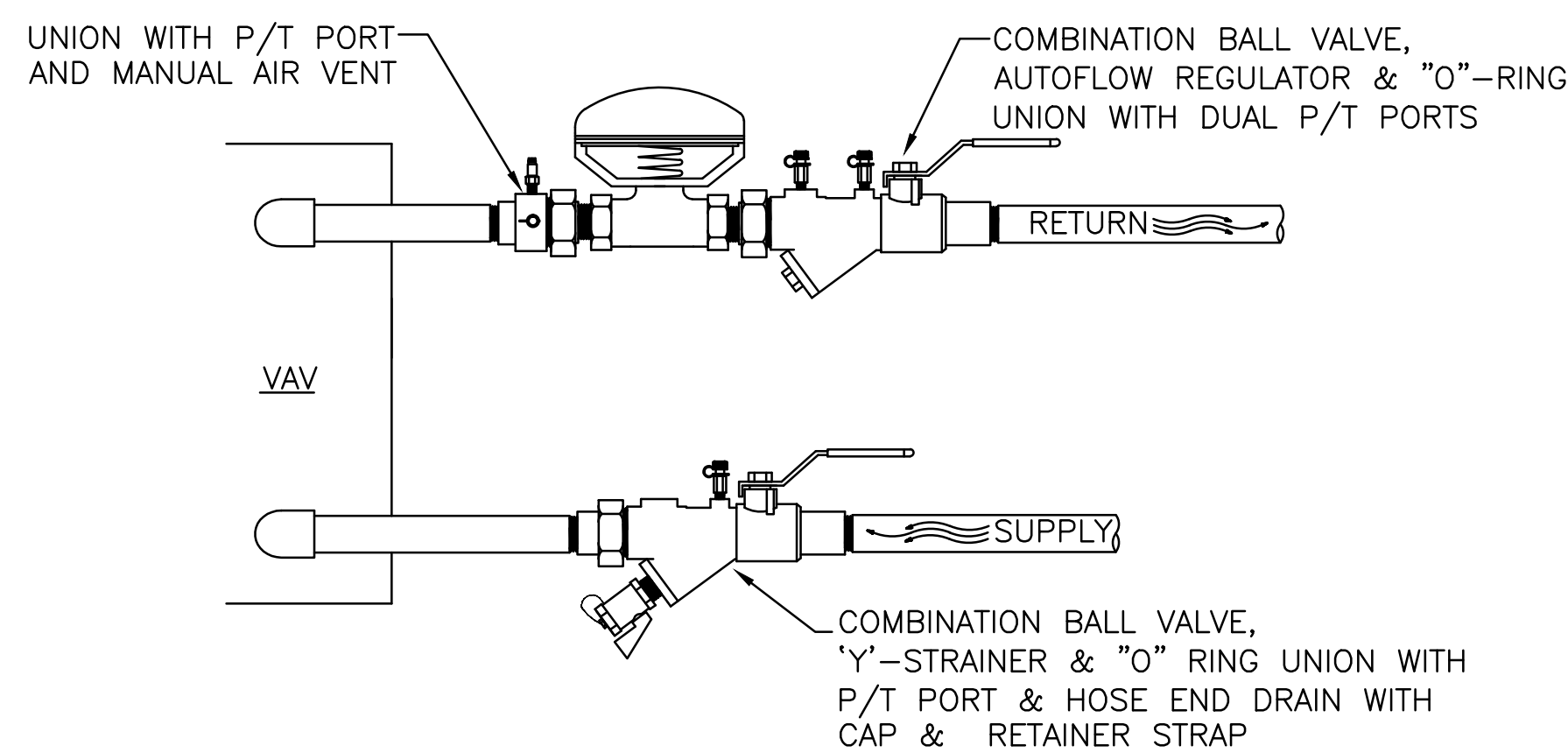
NOTE:
TOP OF CHEMICAL POT
FEEDER TANK SHALL NOT
BE MORE THAN 4'-0"
[1200mm] ABOVE
FINISHED FLOOR.



NOTES:
SEE SPECIFICATION SECTION "PUMPS" FOR Y STRAINER OPTION.

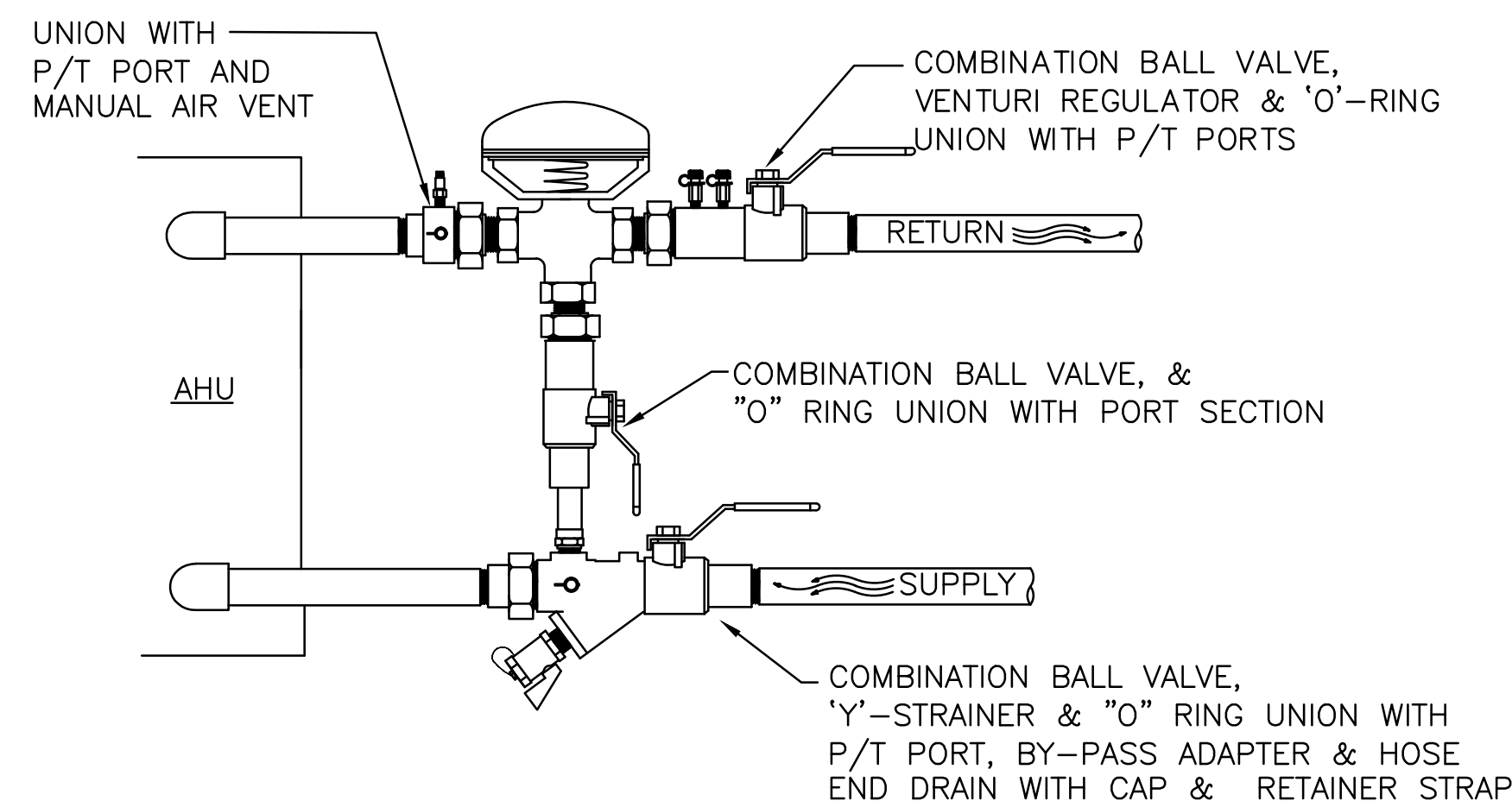
1 WATER COOLED CHILLER

SCALE: NTS



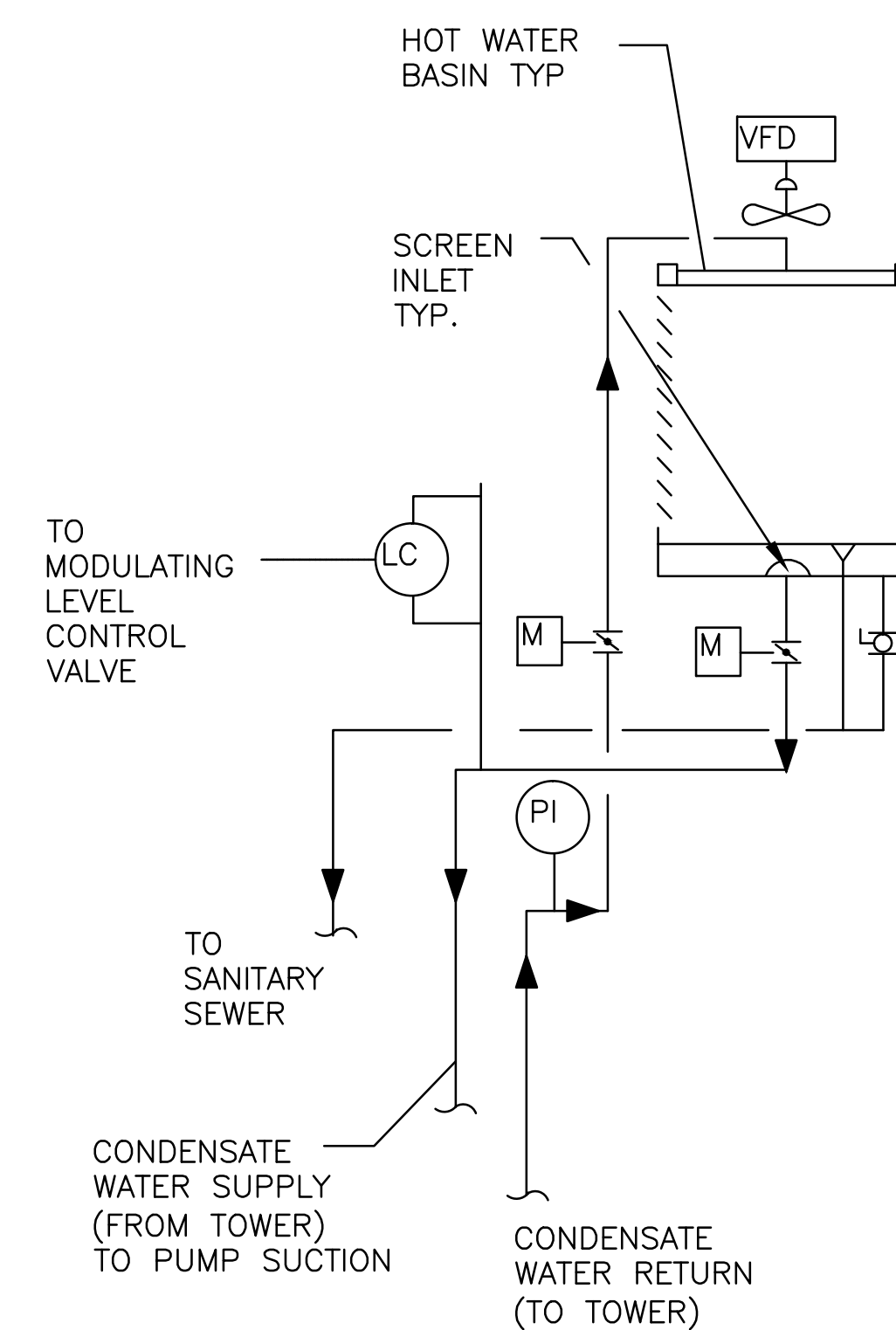
4 2-WAY COILS AUTOMATIC BALANCED

SCALE: NTS



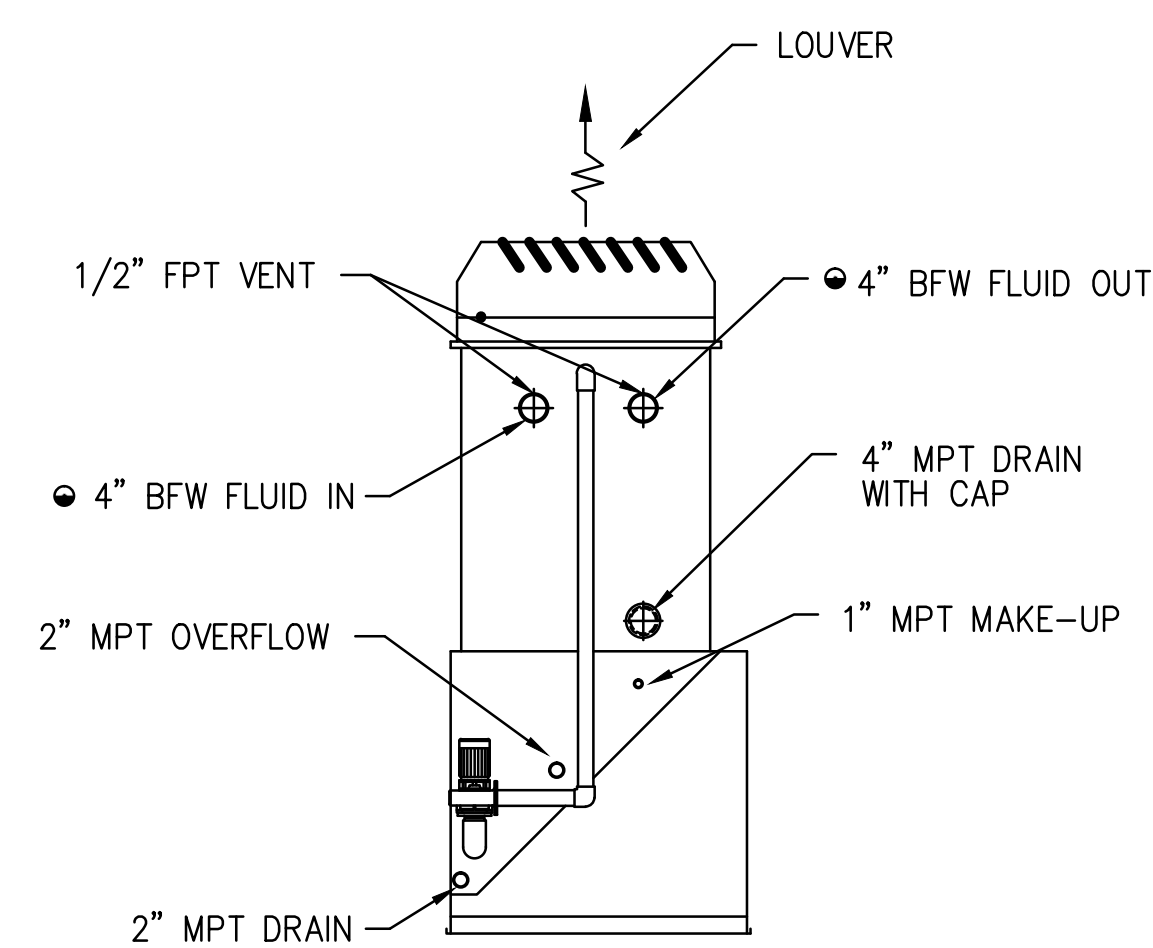
3-WAY COILS AUTOMATIC BALANCED

SCALE: NTS





COOLING TOWER DETAIL

SCALE: NTS



BID ITEM 002 ONLY

		CONSULTANTS: CIVIL: KENNETH HORNE & ASSOCIATES 1201 NORTH 10TH AVENUE, SUITE 8 PENSACOLA, FLORIDA 32504 PH (850) 471-0000 FX (850) 471-0090 LANDSCAPE ARCHITECT: CSA GROUP, INC. 6300 PROCTOR SQUARE DRIVE MOBILE, ALABAMA 36609 PH (251) 344-4023 FX (251) 344-4052		ARCHITECT/ENGINEERS:  CIVIL/MECHANICAL: SCHMIDT CONSULTING GROUP, INC. 3040 IRVING AVE, SUITE 300 PENSACOLA, FLORIDA 32503 PH (850) 438-0000 FX (850) 432-9091 ARCHITECTURE: BULLOCK TICE ASSOCIATES, INC. 608 EAST CRYSTAL STREET PENSACOLA, FL 32501 PH (850) 438-5444 FX (850) 432-5208		Drawing Title HVAC RISER DIAGRAM AND DETAILS Approved Project Director		Project Title PANAMA CITY JOINT OUTPATIENT CLINIC VA GULF COAST HEALTH CARE Location PANAMA CITY, FLORIDA Date 16 APRIL 2012		Project Number 520-326 Building Number - Drawing Number MH005 Dwg. 6 of 13		Office of Construction and Facilities Management  Department of Veterans Affairs	
--	--	---	--	---	--	---	--	--	--	--	--	--	--