[illegible]

**CONSULTANTS:**

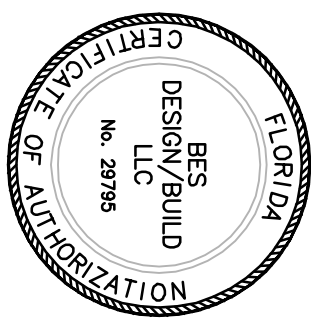
CIVIL:  
KENNETH HORNE & ASSOCIATES  
201 NORTH 9TH AVENUE, STE. 6  
PH: (850) 471-9005  
FX: (850) 471-0093

LANDSCAPE ARCHITECT:  
6300 DECAVILLE, SUITE 100  
MOBILE, ALABAMA 36689  
PH: (251) 344-4023  
FX: (251) 344-4052

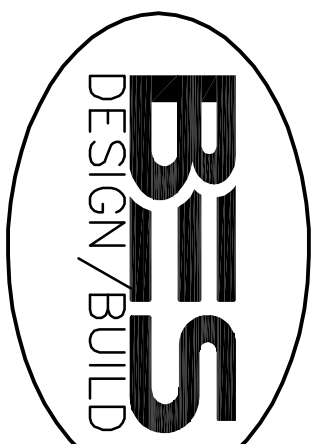
CONTRACTOR:  
SCHWARTZ CONSULTING GROUP, INC.  
40 S. PALMAYO PLACE, STE. 30  
PH: (850) 338-0502  
FX: (850) 432-8831

ARCHITECT:  
HARTSHORN & ASSOCIATES, INC.  
909 EAST CEMARIS STREET  
PENSACOLA, FL 32501  
PH: (950) 434-5441  
FX: (850) 432-5208

**SUPERVISOR:**  
KCI TECHNOLOGIES, INC.  
10401 HIGHLAND MANOR DRIVE, SUITE 120  
TAMPA, FLORIDA 33610  
PH: (813) 740-2500

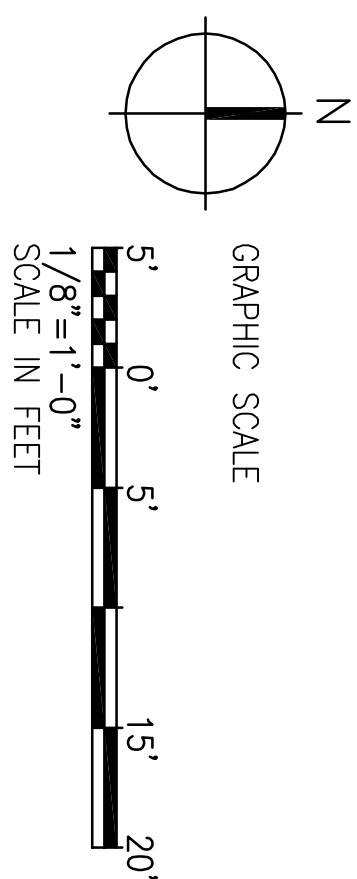
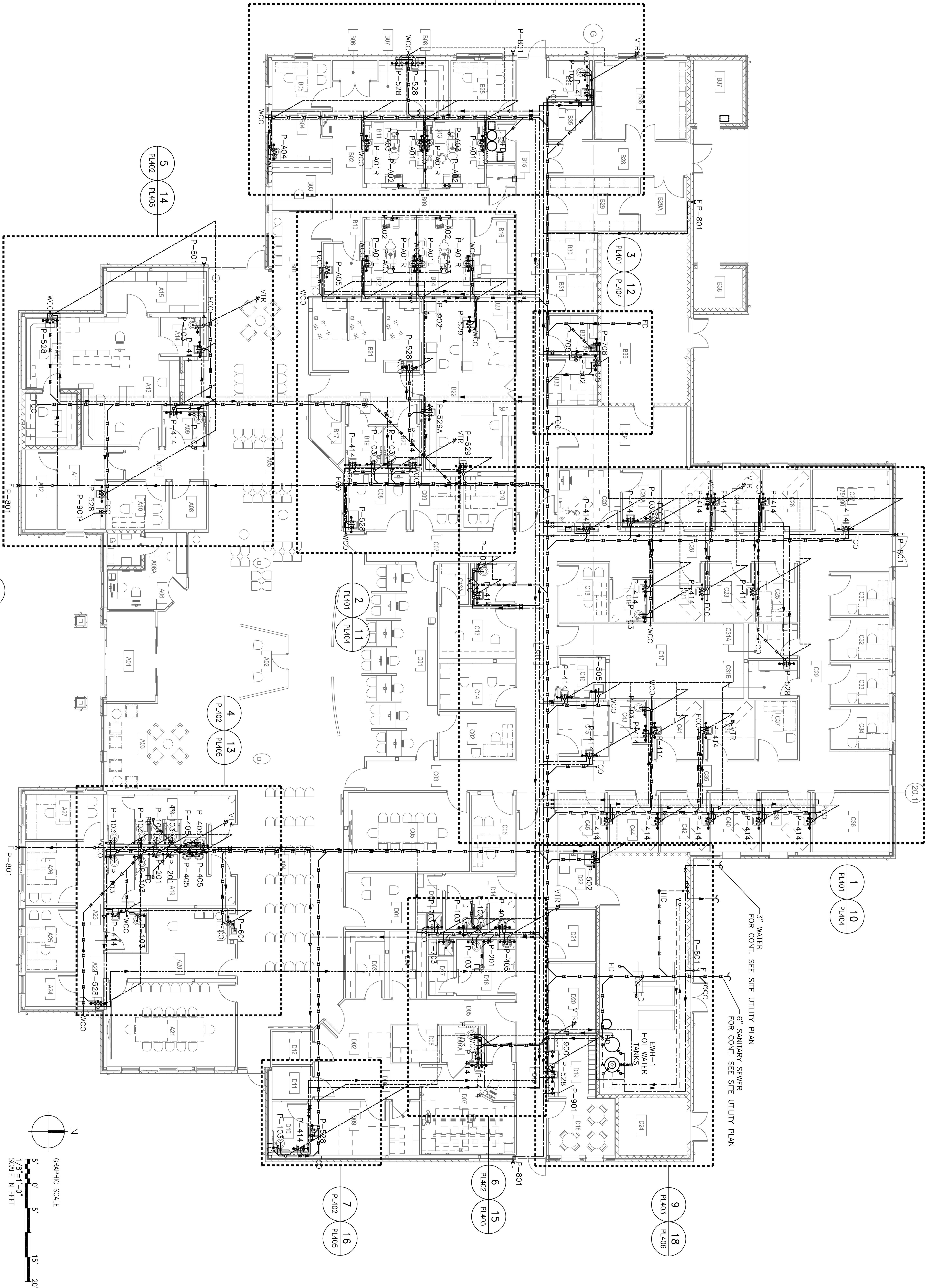


ARCHITECT/ENGINEERS




BES DESIGN/BUILD, LLC  
766 Middle St, Fairhope, AL 36532  
Phone: 251.990.5778 Fax:  
251.990.3716

## 1) OVERALL PLUMBING PLAN



# FINAL SUBMISSION

Drawing Title <b>PLUMBING PLAN OVERALL LAYOUT</b>	Project Title <b>PANAMA CITY JOINT OUTPATIENT CLINIC VA GULF COAST HEALTH CARE</b>		Project Number <b>520-326</b>	Office of <b>Construction and Facilities Management</b>
	Location <b>PANAMA CITY, FLORIDA</b>	Building Number <b>-</b>	Approved Project Director	
Date <b>MARCH 2002</b>	Checked <b>WMB</b>	Drawn <b>JLL</b>	Drawing Number <b>PL101</b> Dwg 2 of 16	 Department of <b>Veterans Affairs</b>