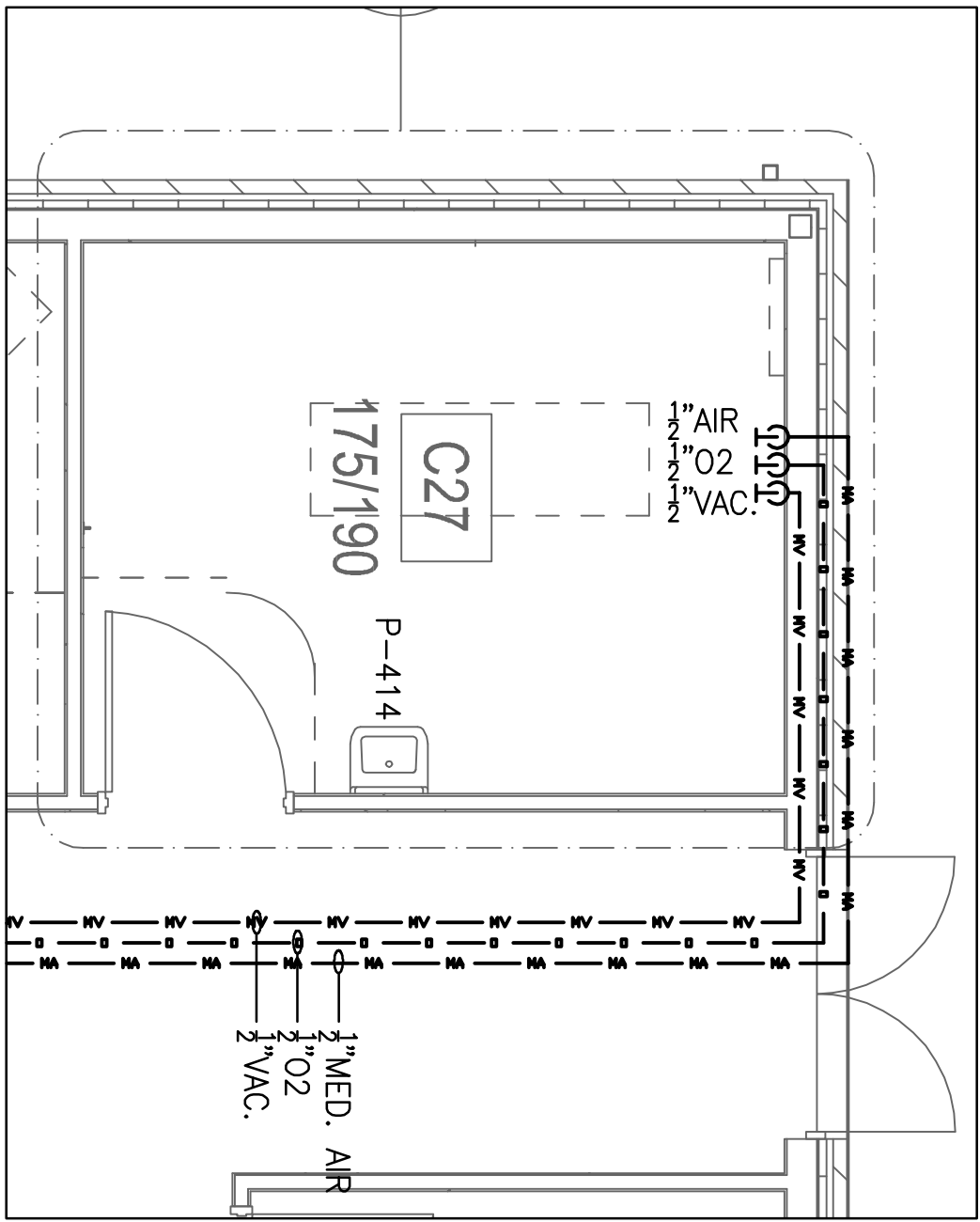
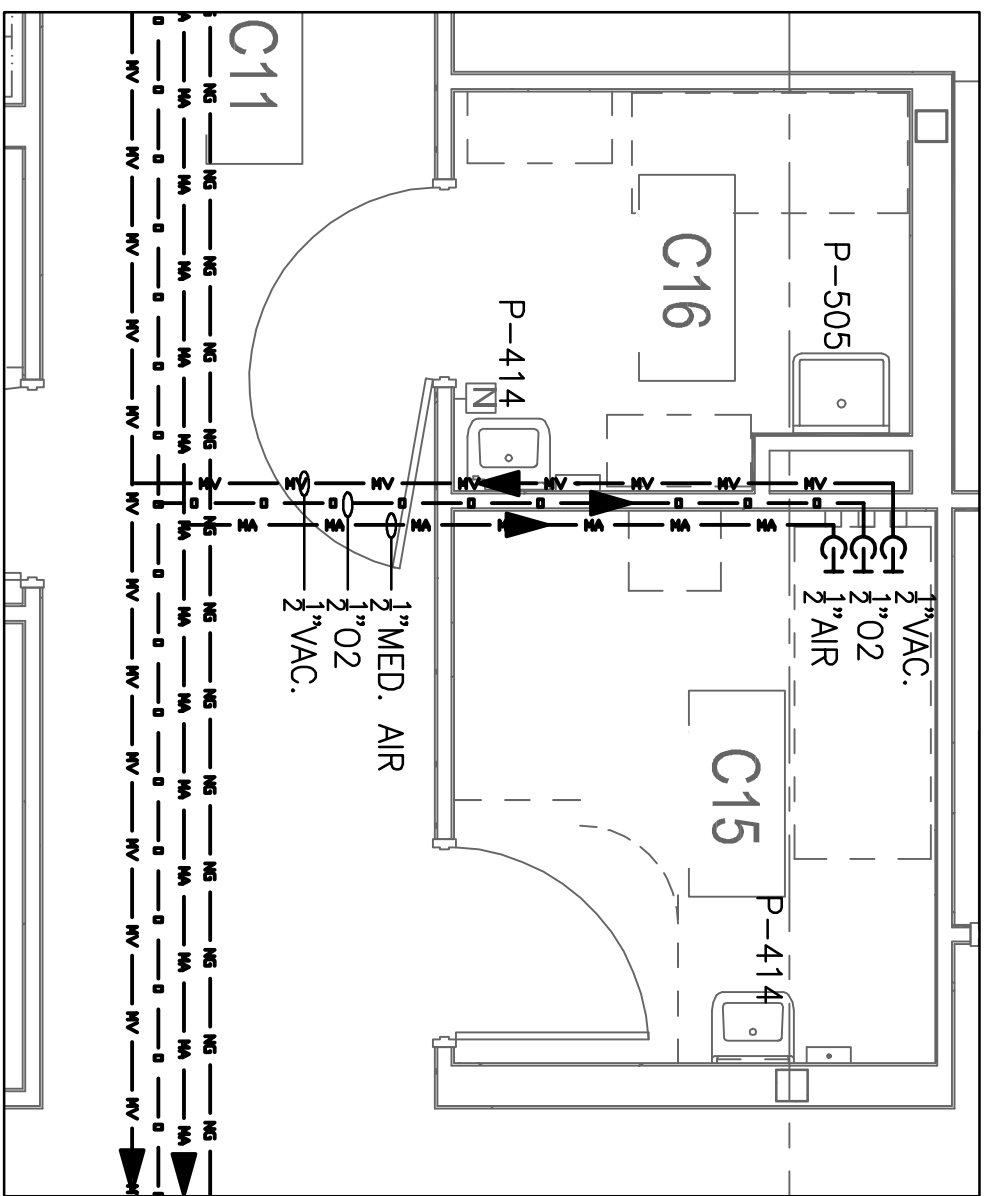


19 ENLARGED CLINICAL GAS PLAN

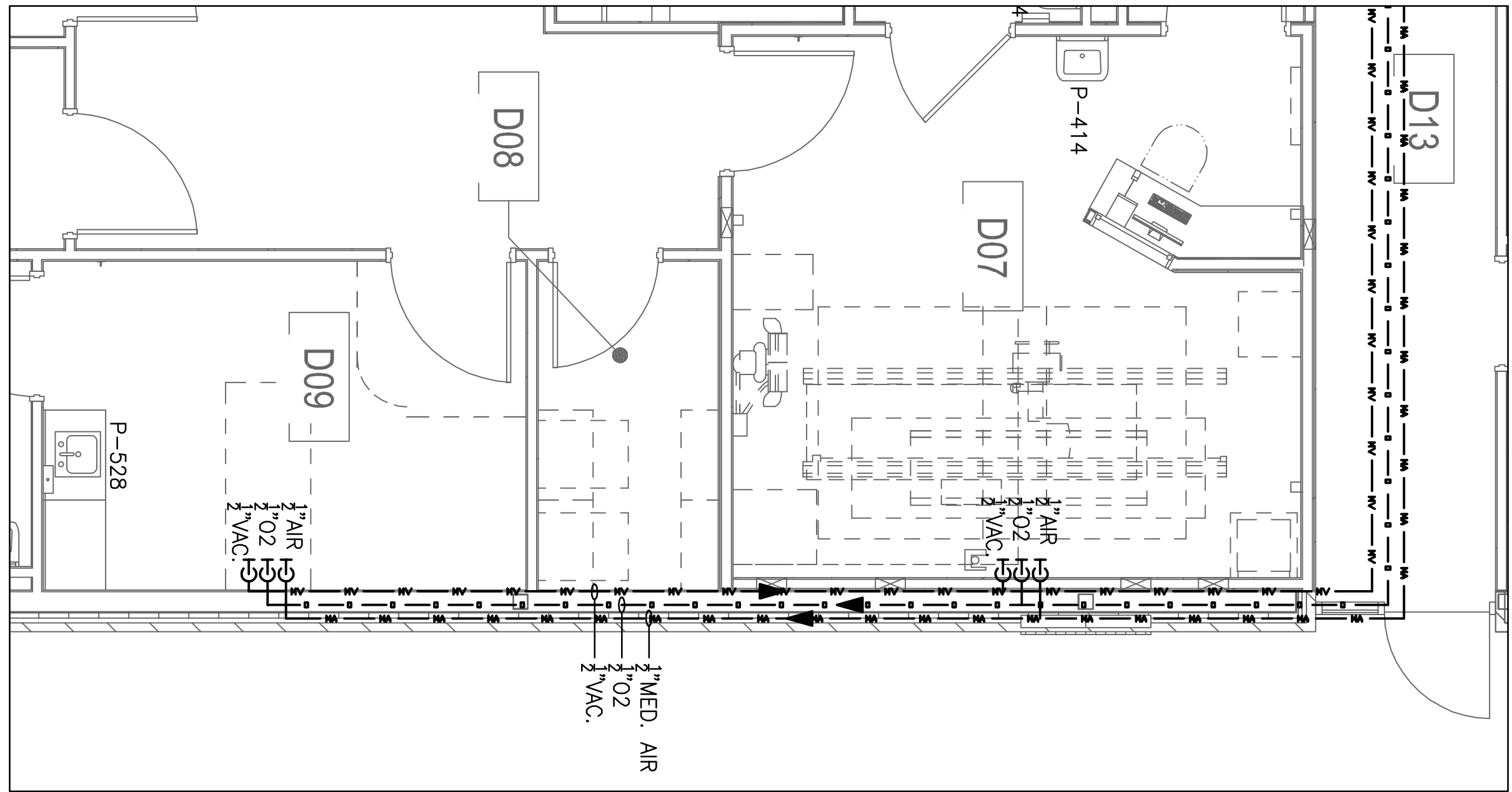
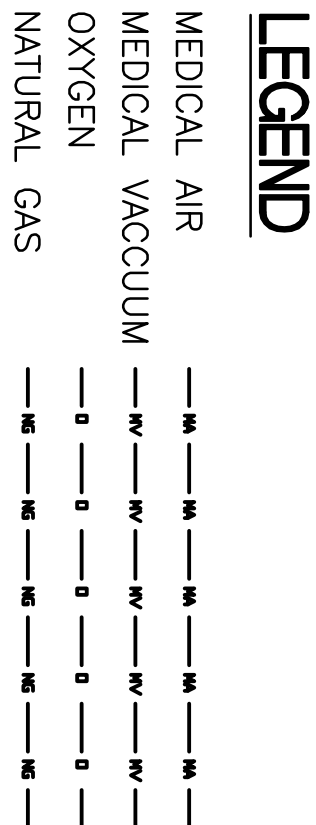
NOTES:
1. MECHANICAL ROOM (B27) TO BE INSULATED WITH SOUND ATTENUATION INSULATION ON THE WALLS AND CEILING.



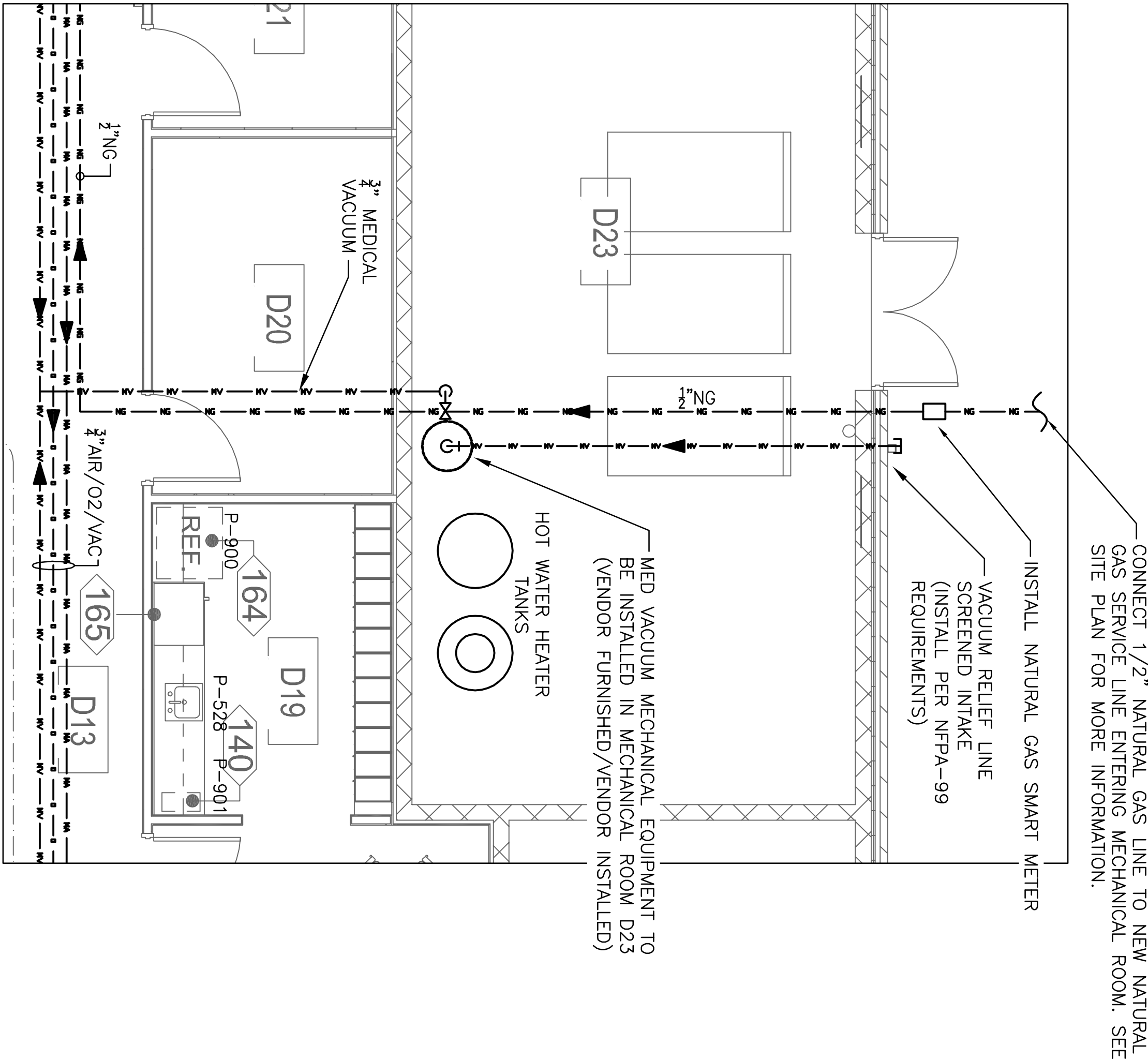
22 ENLARGED CLINICAL GAS PLAN



23 ENLARGED CLINICAL GAS PLAN



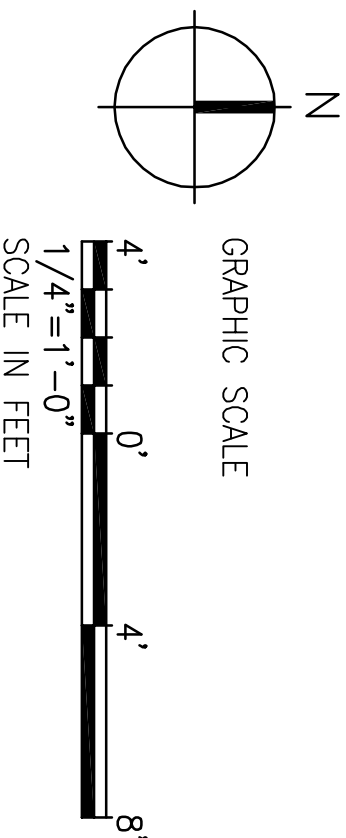
20 ENLARGED CLINICAL GAS PLAN



21 ENLARGED CLINICAL GAS PLAN

| ROOM NO. | CONSOLE NO. | SERVICE | SIZE | CONN. | CONN. PT.* | CONSOLE MODEL NO. |
|----------------------|-------------|--|--|-------|------------|---------------------|
| B11, B12 B13, B14 | P-A01L | COOL/HOT WATER VACUUM | 1/2" WALL 1/2" WALL 1" WALL | 2" | | A-DEC MODEL 5531.72 |
| B11, B12 B13, B14 | P-A01R | SS DRAIN COOL/HOT WATER MEDICAL VACUUM | 1 1/2" WALL 1/2" WALL 1/2" WALL | 2" | | A-DEC MODEL 5531.72 |
| B11, B12 B13, B14 | P-A02 | SS DRAIN MEDICAL VACUUM | 1 1/2" WALL 1/2" WALL | 1" | | A-DEC MODEL 5580.42 |
| B11, B12 B13, B14 | P-A03 | SS DRAIN COLD WATER MEDICAL AIR | 1 1/2" WALL 1/2" FLOOR 1/2" FLOOR | 2" | | A-DEC MODEL 511 |
| B04 | P-A04 | MEDICAL VACUUM COOL/HOT WATER MEDICAL VACUUM MEDICAL AIR SS DRAIN NATURAL GAS | 1/2" WALL 1/2" WALL 1" WALL 1 1/2" WALL 1/2" WALL 1/2" WALL | 1" | | A-DEC MODEL 5531-30 |
| B09 | NA | OXYGEN | 1/2" WALL | 1" | | NA |
| C15 | NA | MEDICAL VACUUM | 1/2" WALL | 1" | | NA |
| C27 | NA | OXYGEN | 1/2" WALL | 1" | | NA |
| D07 | NA | MEDICAL VACUUM | 1/2" WALL | 1" | | NA |
| D09 | NA | OXYGEN | 1/2" WALL | 1" | | NA |

- NOTES:
- CONTRACTOR TO COORDINATE ROUGH-IN LOCATION WITH VA FURNISHED AND INSTALLED EQUIPMENT.
 - *CONN. PT. REPRESENTS THE DISTANCE TO THE CONNECTION POINT PERPENDICULAR FROM THE WALL/FLOOR SURFACE AND IS BASED ON MODEL INFORMATION SHOWN.
 - BASES OF DESIGN IS NOT INTENDED TO LIMIT EQUIPMENT SELECTION PROVIDE INADEQUATE EQUIPMENT OR SUPPLY OF EQUAL PERFORMANCE AND QUALITY.
 - MEDICAL GAS MUST BE CERTIFIED PER NFPA-99 REQUIREMENTS.



FINAL SUBMISSION

| | |
|-----------|------|
| Revisions | Date |
| | |
| | |
| | |
| | |
| | |
| | |
| | |
| | |
| | |

CONSULTANTS:

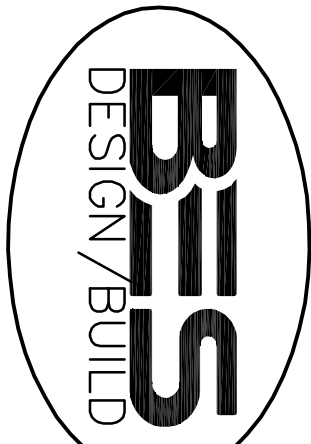
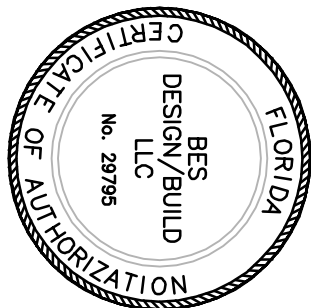
7201 NORTH 9TH AVENUE, STE. 6
TAMPA, FL 33604
PH: (850) 471-9000
FX: (850) 471-0093

LANDSCAPE ARCHITECT:
6300 PROUDLY SQUARE DRIVE
909 EAST CHEROKEE STREET
TAMPA, FL 33611
PH: (850) 344-4023
FX: (850) 344-4022

CONSULTANTS:

CONVALESCENT CONSULTING GROUP, INC.
40 S. PALMWAY PLACE, STE. 300
TAMPA, FL 33602
PH: (850) 435-0950
FX: (850) 432-8631

800 TECHNOLOGIES, INC.
10001 HIGHLAND AVENUE, SUITE 120
TAMPA, FL 33617
PH: (813) 742-2300



BES DESIGN/BUILD, LLC
766 Middle St., Fairhope, AL 36532
Phone: 251.990.5778 Fax: 251.990.3716

Architect/Engineers:

ENLARGED PIPING PLANS
CLINICAL GAS

Approved Project Director

Project Title
PANAAMA CITY
JOINT OUTPATIENT CLINIC
VA GULF COAST HEALTH CARE

Project Number
520-326
Building Number
-

Location
PANAAMA CITY, FLORIDA

Date
MARCH 2012

Checked
WMB

Drawn
JLL

Dwg Number
PL408

Office of
Construction
and Facilities
Management

