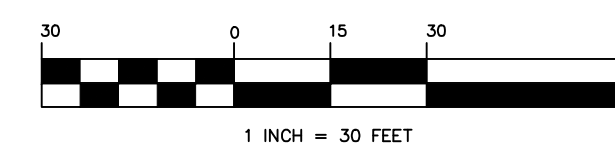
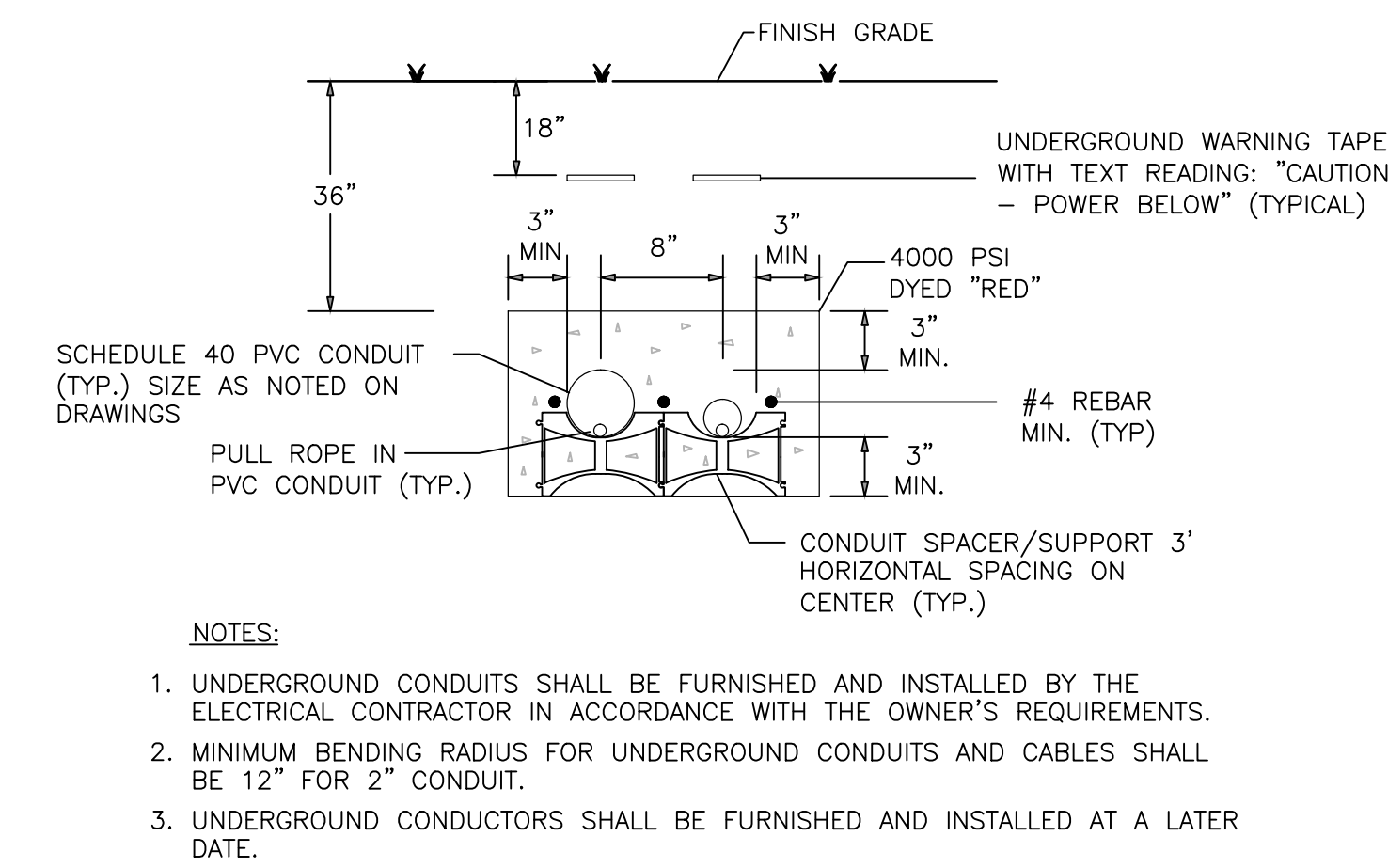
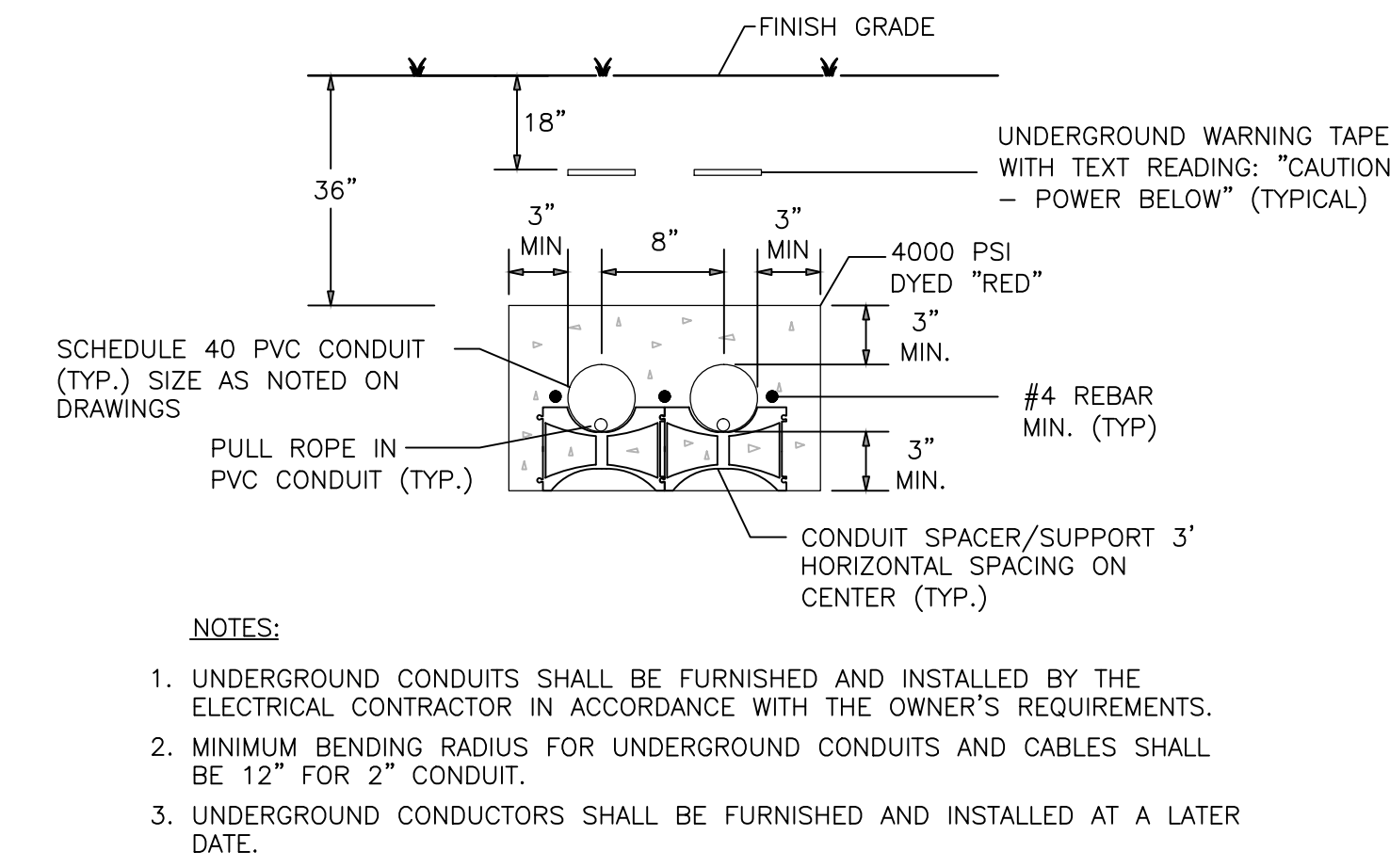
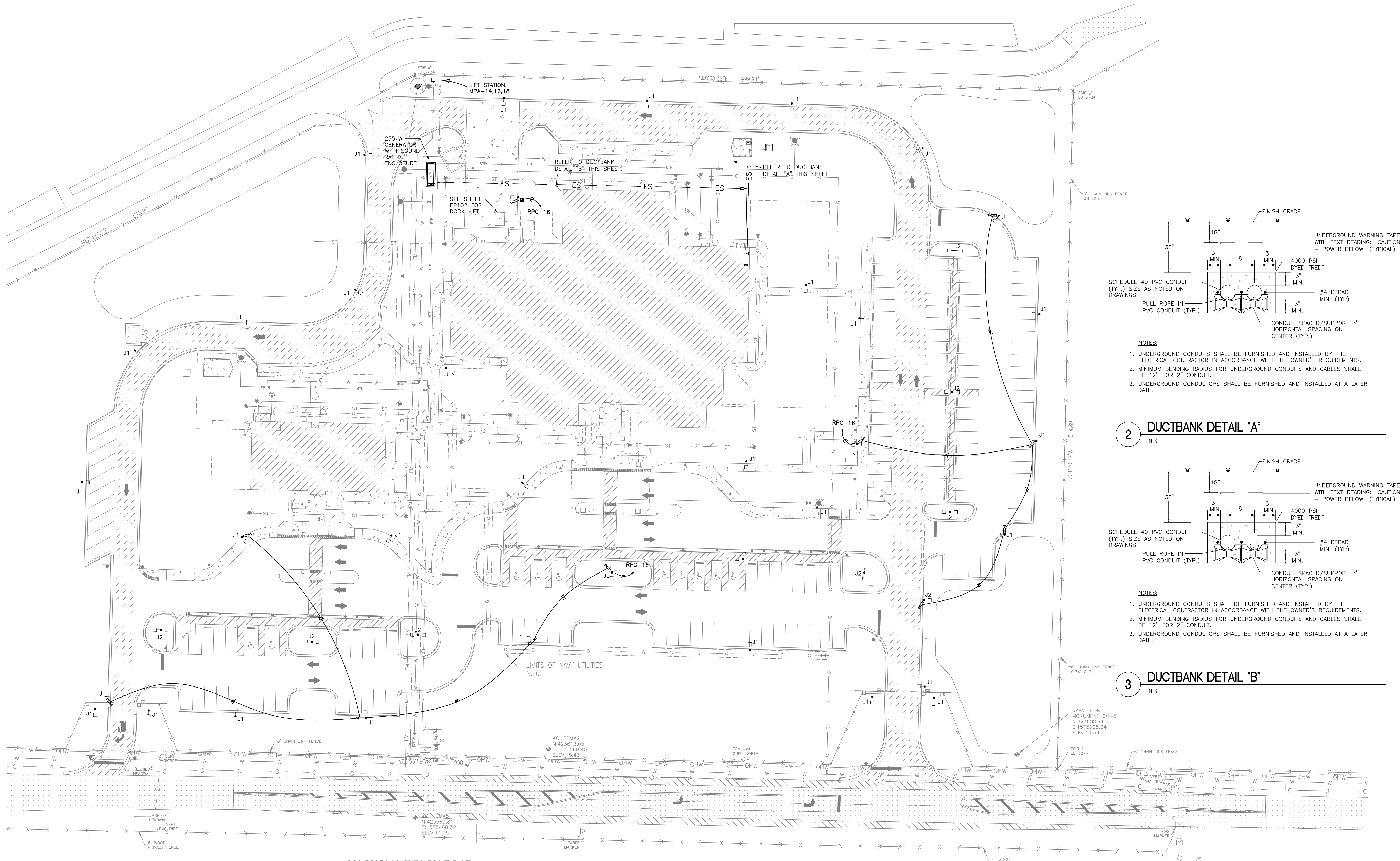


three inches = one foot
one and one half inches = one foot
one inch = one foot
three quarters inch = one foot
one half inch = one foot
one quarter inch = one foot
three eighths inch = one foot
one eighth inch = one foot



FINAL SUBMISSION

CONSULTANTS: CIVIL: KENNETH HORNE & ASSOCIATES 7201 NORTH 8TH AVENUE, STE. 8 PENSACOLA, FLORIDA 32504 PH: (850) 471-9005 FX: (850) 471-0053 LANDSCAPE ARCHITECT: CSA GROUP, INC. 6000 PICCADILLY SQUARE DRIVE MOBILE, ALABAMA 36609 PH: (251) 344-4023 FX: (251) 344-4052 COMM/DS: SCHMIDT CONSULTING GROUP, INC. 40 S. PALMFOX PLACE, STE. 300 PENSACOLA, FLORIDA 32502 PH: (850) 438-0050 FX: (850) 432-8831 ARCHITECTURE: BULLOCK TICE ASSOCIATES, INC. 909 EAST CERVANTES STREET PENSACOLA, FL 32201 PH: (850) 434-5444 FX: (850) 432-9205 SURVEYORS: KGI TECHNOLOGIES, INC. 10401 ISLAND MANOR DRIVE, SUITE 100 TAMPA, FLORIDA 33610 PH: (813) 740-2500			ARCHITECT/ENGINEERS: BES DESIGN/BUILD, LLC 766 Middle St, Fairhope, AL 36532 Phone: 251.990.5778 Fax: 251.990.3716			Drawing Title ELECTRICAL SITE PLAN Approved: Project Director		Project Title PANAMA CITY JOINT OUTPATIENT CLINIC VA GULF COAST HEALTH CARE Location PANAMA CITY, FLORIDA Date MARCH 2012 Checked - Drawn GWS		Project Number 520-326 Building Number - Drawing Number ES101 Dwg. 2 of 17		Office of Construction and Facilities Management 	
---	--	--	---	--	--	---	--	---	--	---	--	---	--