



three inches = one foot

one and one half inches = one foot

one inch = one foot

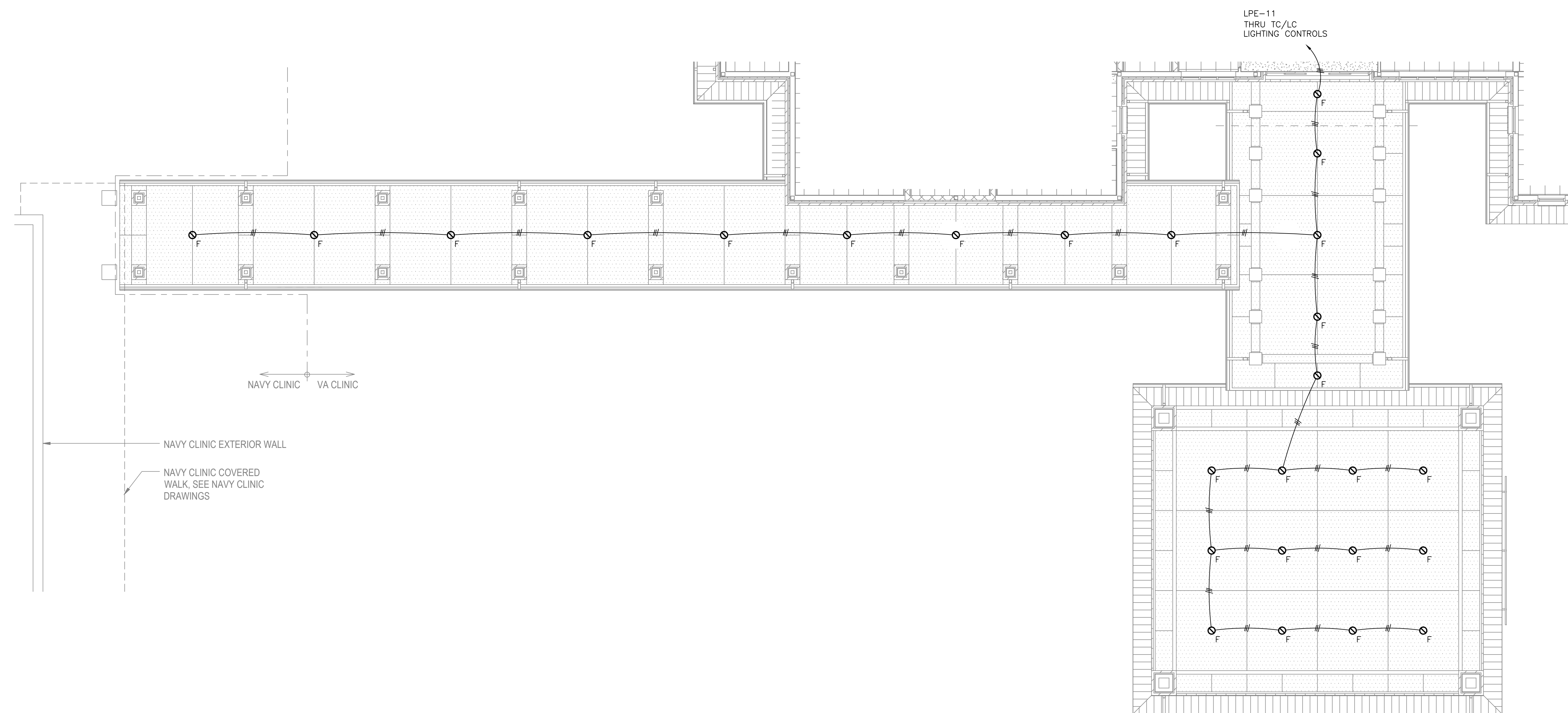
three quarters inch = one foot

one half inch = one foot

three eighths inch = one foot

one quarter inch = one foot




one eighth inch = one foot



0 4' 8' 16'

SCALE: 1/8" = 1'-0"

FINAL SUBMISSION

		CONSULTANTS:				ARCHITECT/ENGINEERS:		Drawing Title LIGHTING PLAN		Project Title PANAMA CITY JOINT OUTPATIENT CLINIC VA GULF COAST HEALTH CARE		Project Number 520-326		Office of Construction and Facilities Management	
		CIVIL: KENNETH HORNE & ASSOCIATES 7201 NORTH 4TH AVENUE, STE. 6 PENSACOLA, FLORIDA 32504 PH: (850) 474-9008 FX: (850) 474-0088		COMM/DB: KCI CONSULTING GROUP, INC. 40 S. PALAFOX PLACE, STE. 300 PENSACOLA, FLORIDA 32502 PH: (850) 438-0050 FX: (850) 438-8831		SURVEYORS: KCI TECHNOLOGIES, INC. 10401 HIGHLAND MANOR DRIVE, SUITE 100 TAMPA, FLORIDA 33619 PH: (813) 740-2300 FX: (850) 438-8831		Approved: Project Director		Location PANAMA CITY, FLORIDA		Building Number -			
Revisions:		Date		LANDSCAPE ARCHITECT: CSA GROUP, INC. 6500 PICCADILLY SQUARE DRIVE MOBILE, ALABAMA 36688 PH: (251) 344-4023 FX: (251) 344-4052		ARCHITECTURE: BULLOCK TICE ASSOCIATES, INC. 809 EAST ORVANTIS STREET PENSACOLA, FL 32501 PH: (850) 434-6444 FX: (850) 432-0308						EL102 Dwg. 4 of 17		 Department of Veterans Affairs	
								BES DESIGN/BUILD, LLC 766 Middle St, Fairhope, AL 36532 Phone- 251.990.5778 Fax- 251.990.3716		Date MARCH 2012		Checked -			