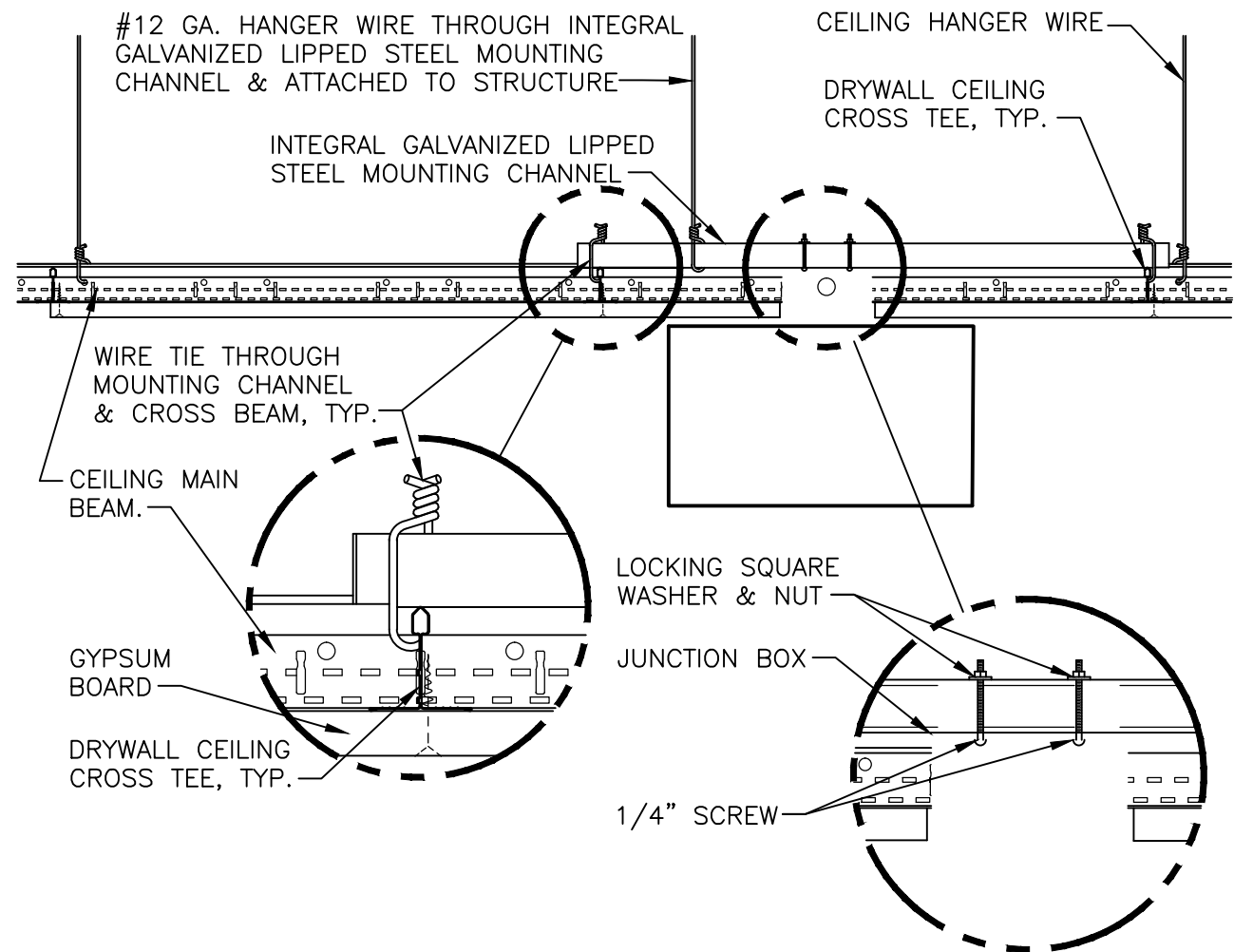
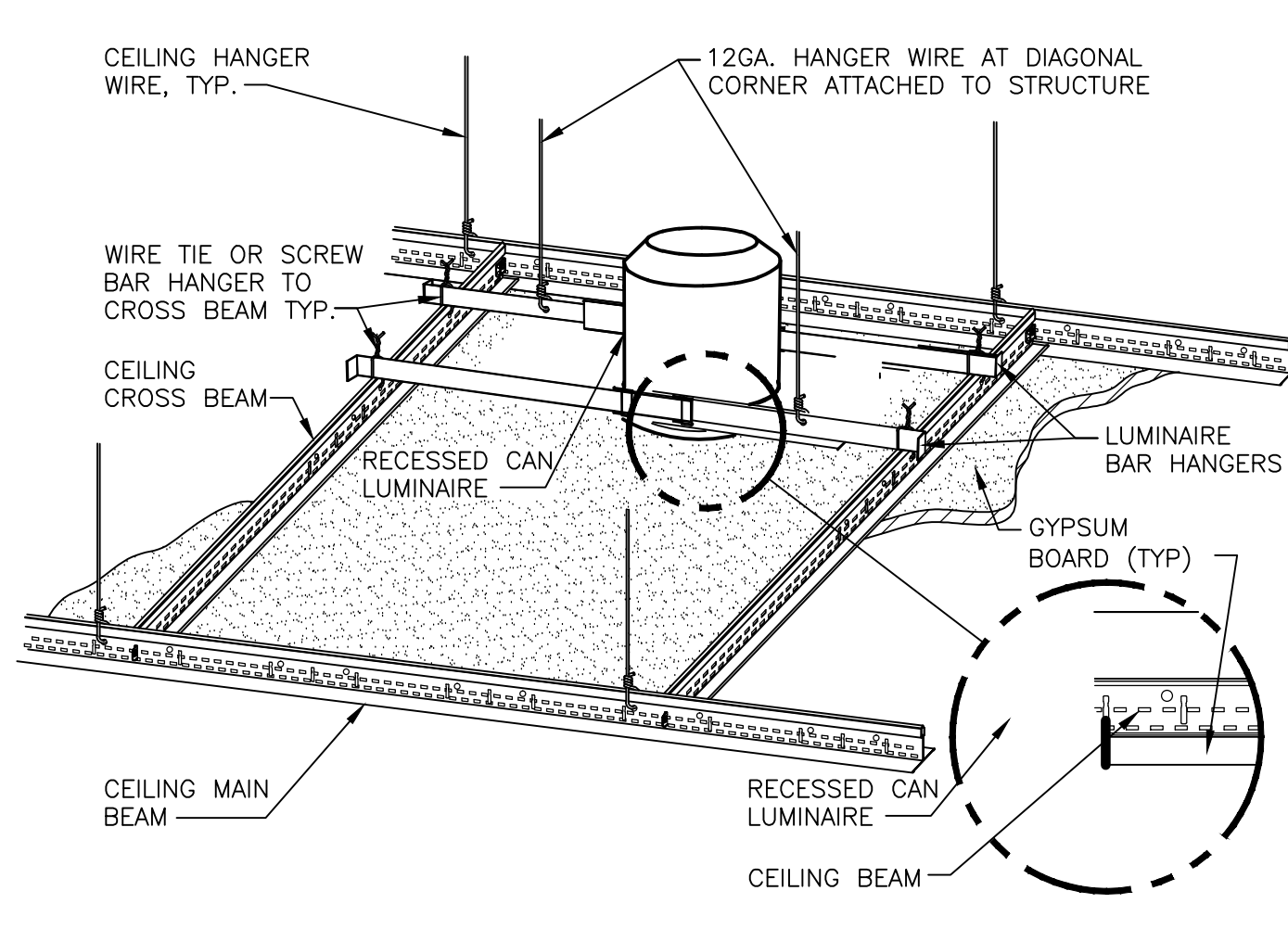


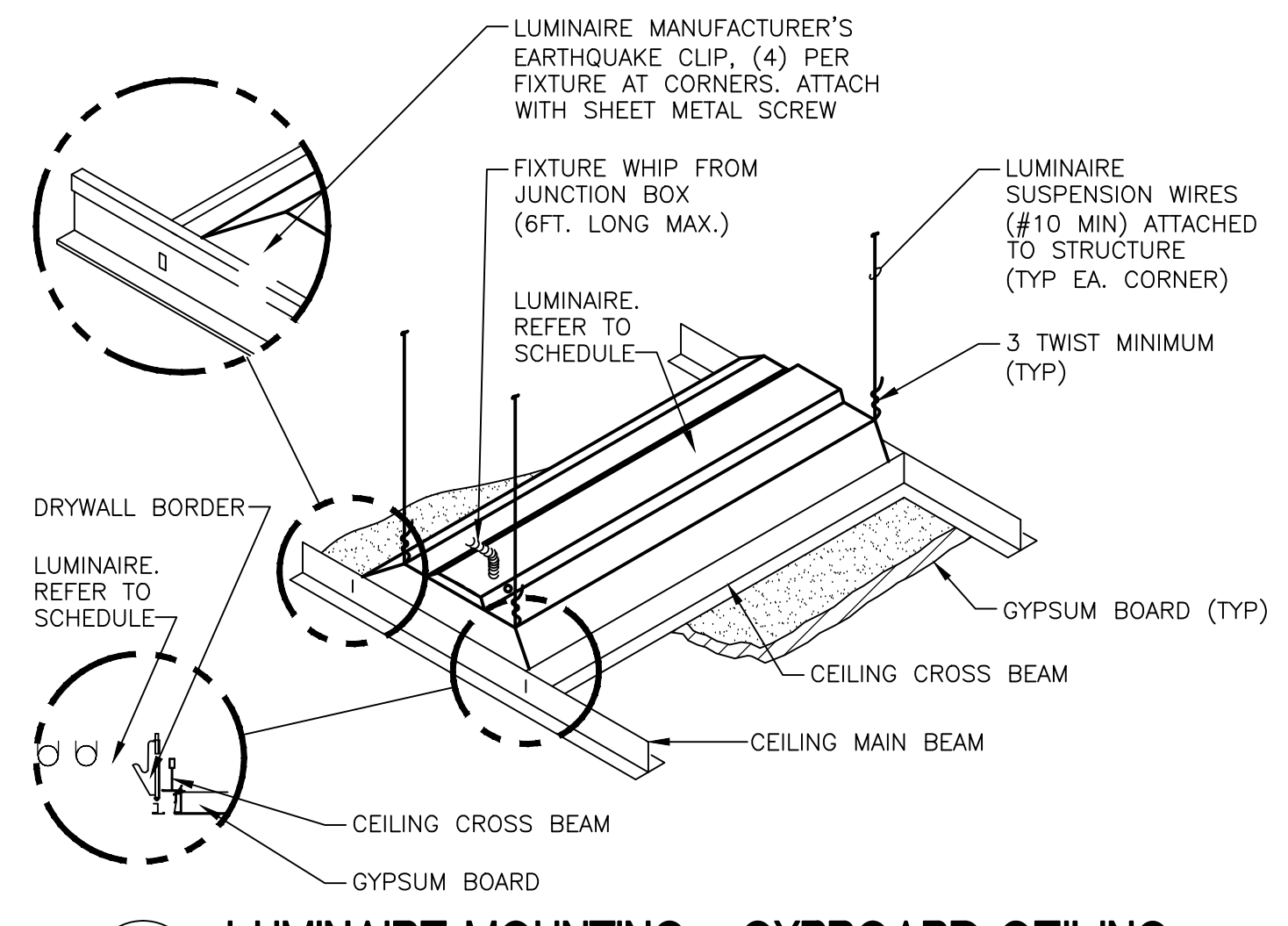
three inches = one foot
one and one half inches = one foot
one inch = one foot
one inch = one foot
three quarters inch = one foot
three quarters inch = one foot
one half inch = one foot
one half inch = one foot
three eighths inch = one foot
three eighths inch = one foot
one quarter inch = one foot
one quarter inch = one foot
one eighth inch = one foot
one eighth inch = one foot



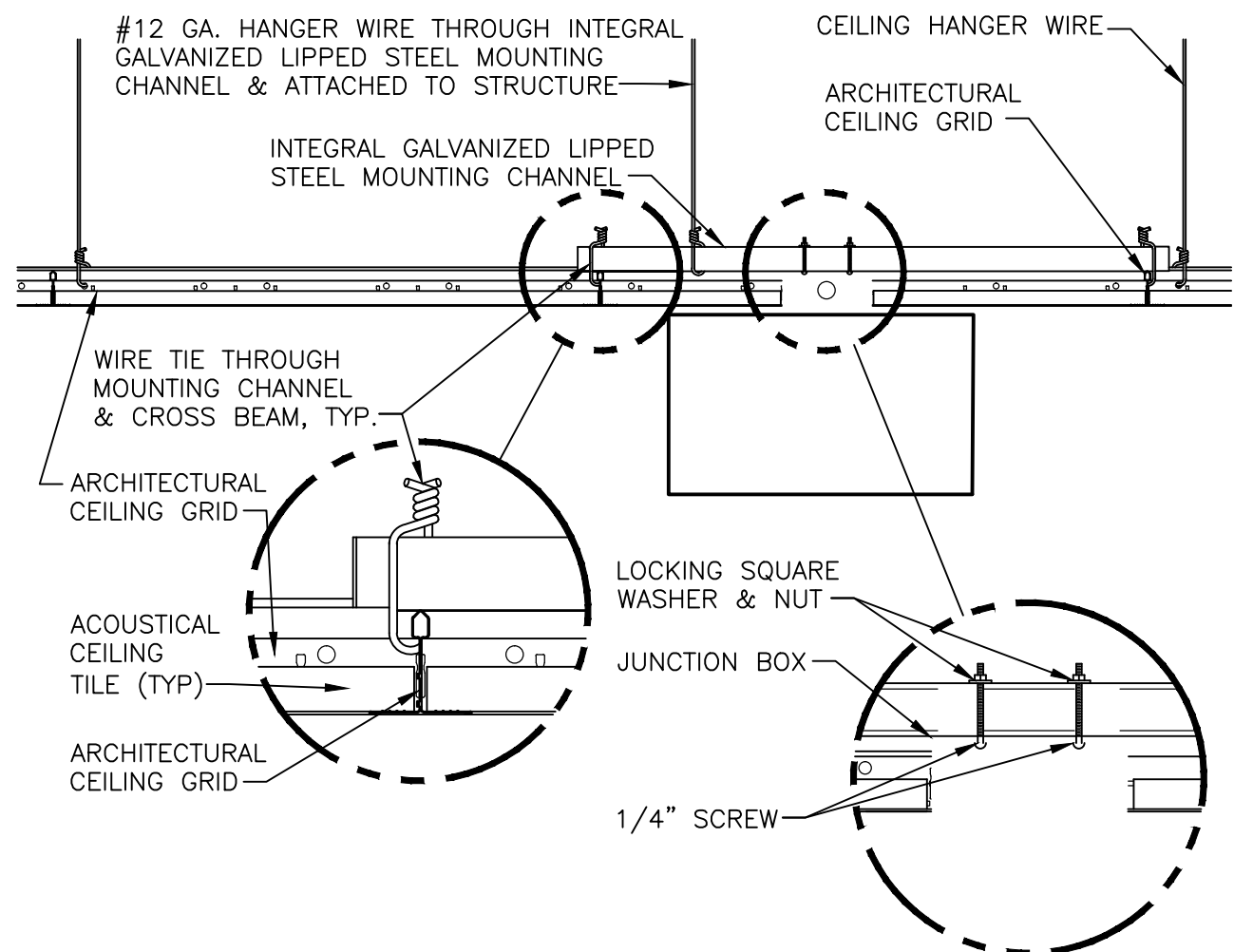
1 EXIT SIGN MOUNTING - GYPBOARD CEILING
NTS



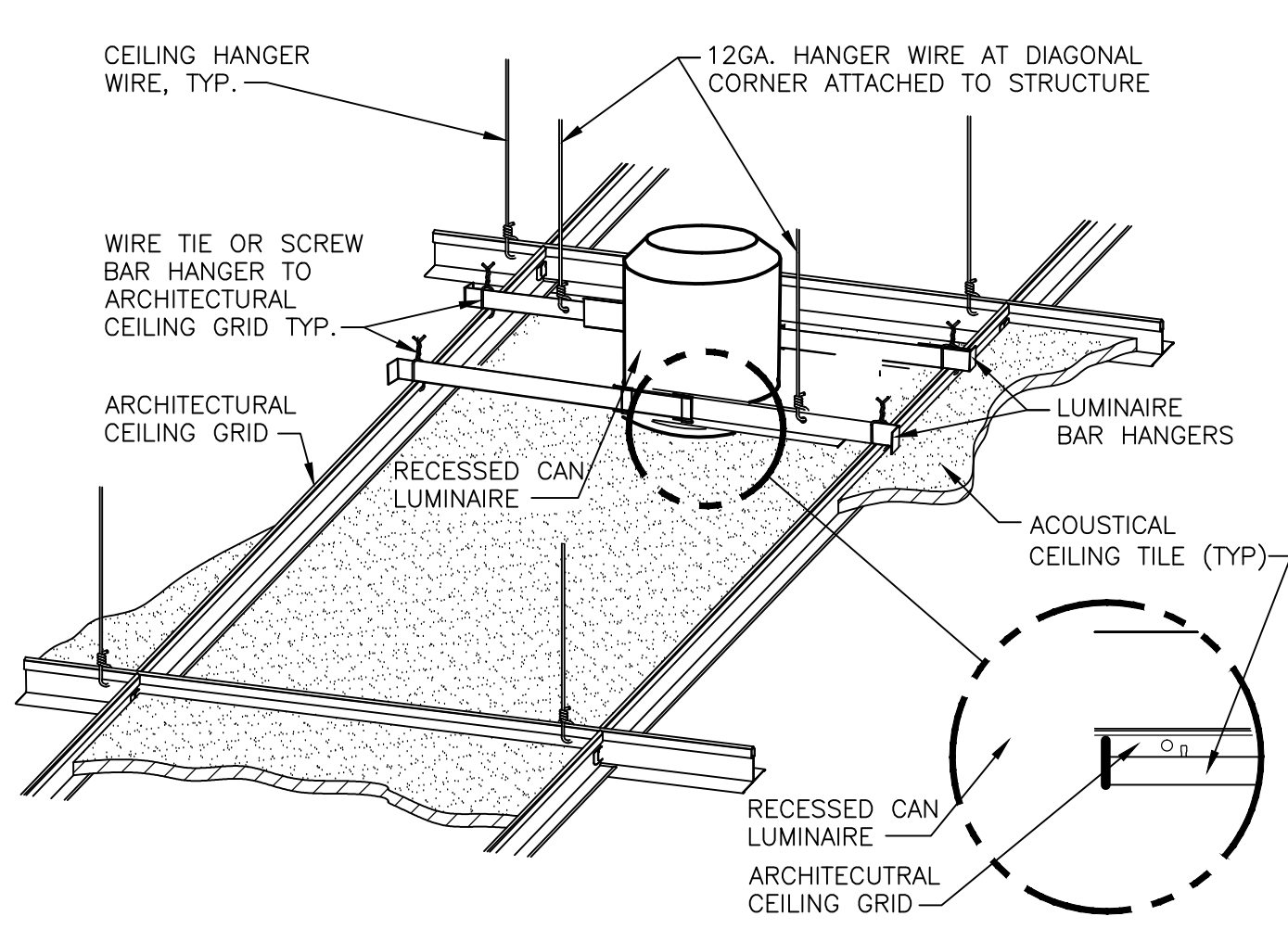
3 DOWNLIGHT MOUNTING - GYPBOARD CEILING
NTS



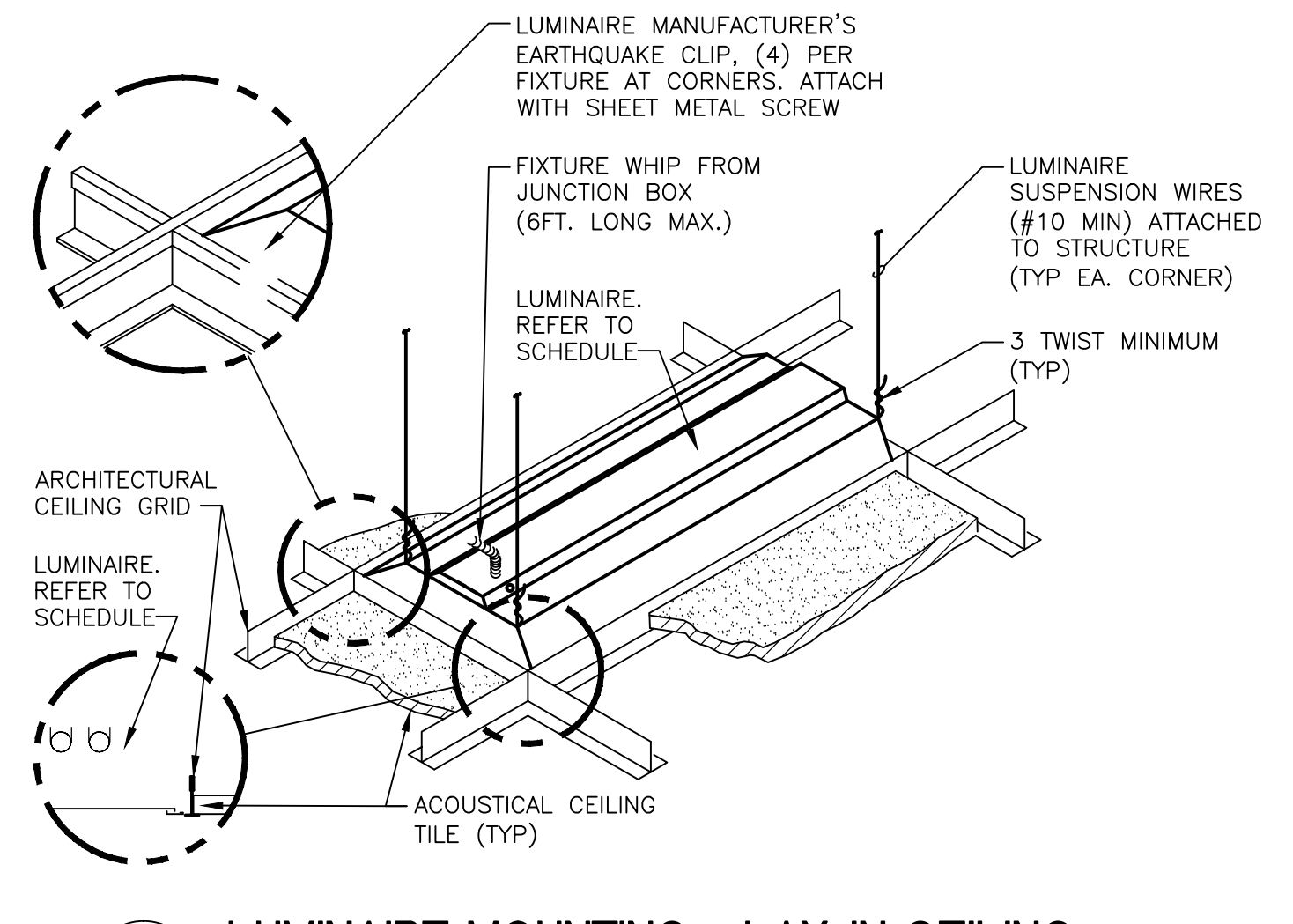
5 LUMINAIRE MOUNTING - GYPBOARD CEILING
NTS



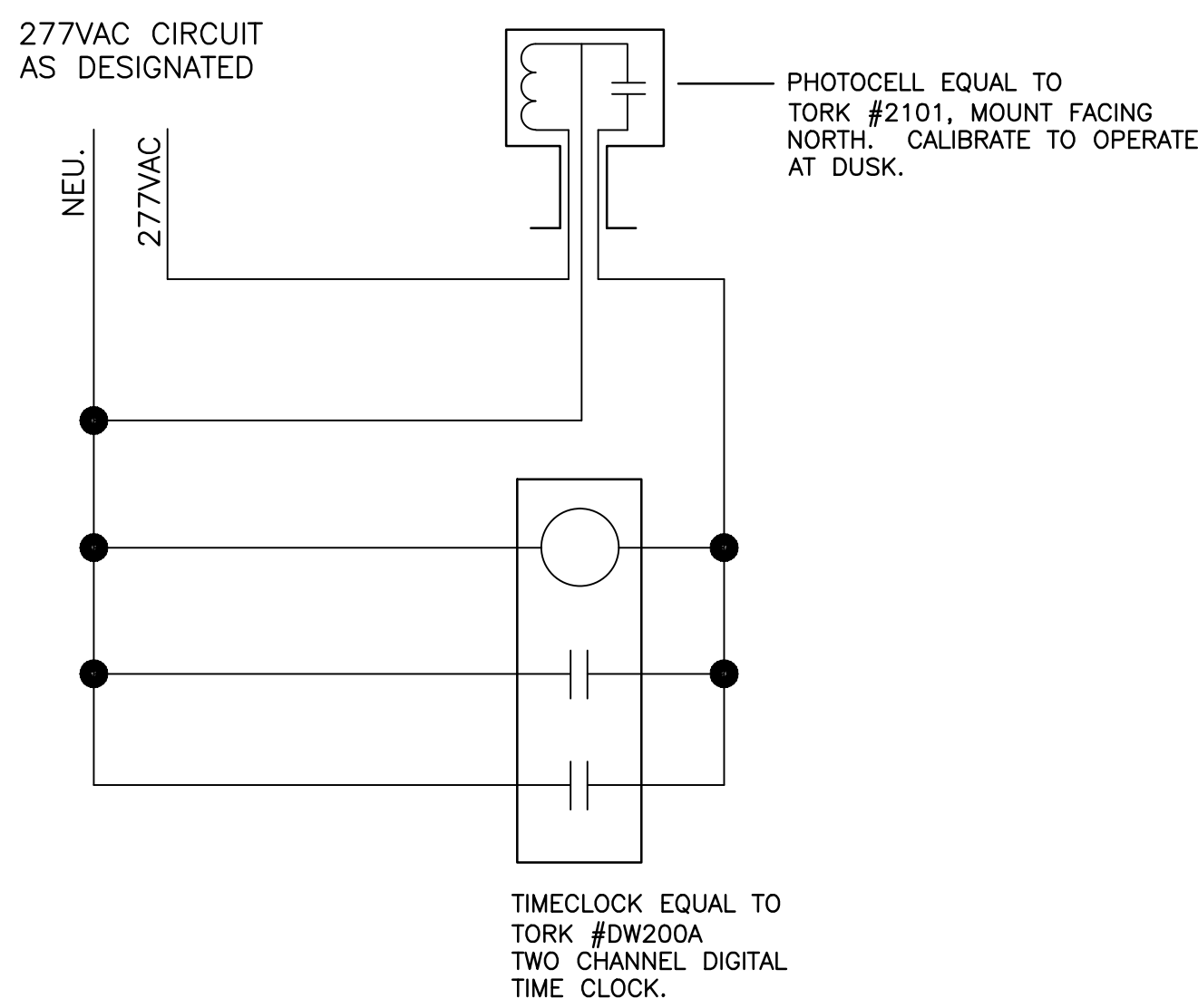
2 EXIT SIGN MOUNTING - LAY-IN CEILING
NTS



4 DOWNLIGHT MOUNTING - LAY-IN CEILING
NTS



6 LUMINAIRE MOUNTING - LAY-IN CEILING
NTS



7 LIGHTING CONTROLS SCHEMATIC
NTS

CONSULTANTS:

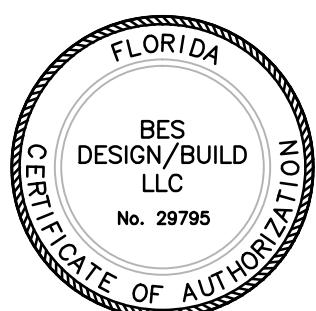
CIVIL
KENNETH HORNE & ASSOCIATES
7201 NORTH 8TH AVENUE, STE. 8
PENSACOLA, FLORIDA 32504
PH: (850) 471-9005
FX: (850) 471-0053

COMM/DS-
SCHMIDT CONSULTING GROUP, INC.
40 S. PALMFOX PLACE, STE. 300
PENSACOLA, FLORIDA 32502
PH: (850) 438-0080
FX: (850) 432-8831

ARCHITECTURE:
CSA GROUP, INC.
8300 PROGRESS SQUARE DRIVE
MOBILE, ALABAMA 36608
PH: (251) 344-4023
FX: (251) 344-4022

ARCHITECTURE:
BULLOCK TICE ASSOCIATES, INC.
909 EAST CERVANTES STREET
PENSACOLA, FL 32501
PH: (850) 454-5444
FX: (850) 432-9208

SURVEYORS:
KGI TECHNOLOGIES, INC.
10401 HESLAND MANOR DRIVE, SUITE 100
TAMPA, FLORIDA 33610
PH: (813) 740-2500



ARCHITECT/ENGINEERS:



BES DESIGN/BUILD, LLC
766 Middle St. Fairhope, AL 36532
Phone: 251.990.5778 Fax: 251.990.3716

Drawing Title
LIGHTING DETAILS

Approved: Project Director

Project Title
PANAMA CITY
JOINT OUTPATIENT CLINIC
VA GULF COAST HEALTH CARE

Location
PANAMA CITY, FLORIDA

Date
MARCH 2012

Checked
-

Drawn
GWS

Project Number
520-326

Building Number
-

Drawing Number

EL200
Dwg. 6 of 17

Office of
Construction
and Facilities
Management

