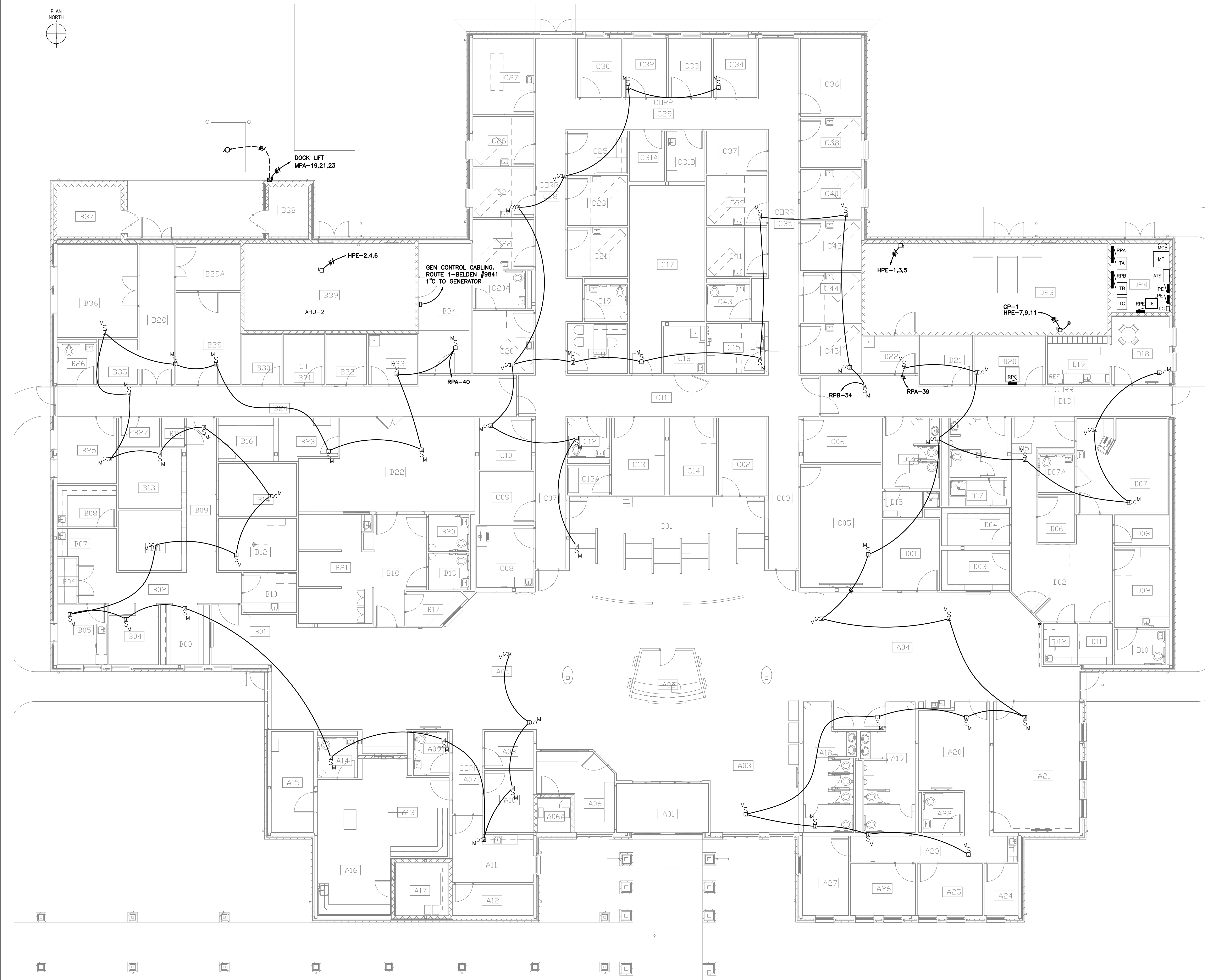


one eighth inch = one foot
one quarter inch = one foot
three eighths inch = one foot
one half inch = one foot
three quarters inch = one foot
one inch = one foot
one and one half inches = one foot
two inches = one foot
three inches = one foot



ROOM NAME LEGEND	
ROOM NAME	RM#
VESTIBULE	A01
VOL. INFO DESK	A02
WAITING AREA "A"	A03
WAITING AREA "B"	A04
WAITING AREA "A"	A05
OPER. ROOM	A06
SECURE STG. VAULT	A06A
CORR.	A07
COMM.	A08
FAM. TLT	A09
VOL. SERV. OFFICER	A10
VOLUNTEER MP ROOM	A11
STG.	A12
RECEP. WKST.	A13
TLT. UNISEX	A14
LOW VOLUME BULK STOR.	A15
STORAGE / DISPENSING	A16
SECURE STG. VAULT	A17
WOMEN RR	A18
MEN'S RR	A19
OFFICE, SECT. & WAITING	A20
CONFERENCE ROOM	A21
ST. TLT	A22
CORR.	A23
SUPP. EQUIPMENT	A24
ADMIN. OFF. (AO)	A25
NURSE MGR.	A26
CHIEF MED. OFF. (CMO)	A27
WAITING	B01
CORR.	B02
RECEP. CHECK-IN FILES	B03
X-RAY	B04
OFFICE/ MED.	B05
BULK STG.	B06
PROS. PREP.	B07
PROS. LAB	B08
CORR.	B09
STER. INST. STG.	B10
HYGIENE OP.	B11
GEN. TREATMENT OP.	B12
HYGIENE OP.	B13
GEN. TREATMENT OP.	B14
SOIL UTIL.	B15
CLEAN STG.	B16
TECHCHECK-IN	B17
CORR.	B18
LAB. TLT	B19
LAB. TLT	B20
BLOOD SPECIMEN COLL.	B21
CLINICAL LAB	B22
BULK STG.	B23
CORR.	B24
ARCE OFFICE	B25
ST. TLT	B26
MECH.	B27
RECEIVING	B28
BS. STG. STERILE	B29
BULK STOR.	B29A
STG. CLEAN LINEN CT	B30
STG. SOILED LINEN CT	B31
INFECT. / HAZARDOUS WASTE	B32
HAC	B33
FMS	B34
FMS WORK SPACE	B35
STG. EMS/ LARGE EQUIP.	B36
MEDICAL GAS STG.	B37
RECYCLE ROOM	B38
MECHANICAL ROOM	B39
MAS. CENTRAL RECEPTION	C01
LEAD CLERK WORKROOM	C02
CORR.	C03
HEALTH BENEFITS (ROI)	C04
MULTI PURPOSE CLASS/CONF.	C05
SOCIAL WORKER	C06
CORR.	C07
VISION SCREENING (TELERETINAL)	C08
FEE PHARMACIST	C09
CLINICAL PHARMACIST	C10
CORR.	C11
STAFF TLT	C12
CCHT NURSE/ PSA	C13
CCHT PSA STG	C13A
TELE HEALTH	C14
ENG	C15
SOILED UTILITY RM	C16
MED. EQUIP. CRASH CART STG.	C17
DIETITIAN	C18
PT TLT	C19
QYN. EXAM ROOM	C20
NS. ST. TLT	C20A
EXAM ROOM	C21
EXAM ROOM	C22
EXAM ROOM	C23
EXAM ROOM	C24
CASE MGR OFFICE	C25
EXAM ROOM	C26
MP PROC. ROOM	C27
CORR.	C28
CORR.	C29
CASE MGR OFFICE	C30
CLEAN UT.	C31A
MED. RM.	C31B
CASE MGR. OFFICE	C32
CASE MGR. OFFICE	C33
CASE MGR. OFFICE	C34
CORR.	C35
LINEN, STRETCHER, MEDICAL EQUIP. STOR.	C36
CASE MGR. OFFICE	C37
EXAM ROOM	C38
EXAM ROOM	C39
EXAM ROOM	C40
EXAM ROOM	C41
EXAM ROOM	C42
PT TLT	C43
EXAM ROOM	C44
EXAM ROOM	C45
R.O.I.	D01
CIRCULATION	D02
RECEP.	D03
TECHS	D04
CORR.	D05
S. UTILITY	D06
RADIOLOGY	D07
PT. TLT	D07A
CLEAN STG.	D08
ULTRASOUND	D09
PT. TLT	D10
DRESSING	D11
MG. RM.	D12
CORR.	D13
WOMEN'S ST. TLT	D14
SHOWER	D15
MEN'S ST. TLT	D16
SHOWER	D17
BREAK RM.	D18
LOOKERKIT	D19
COMM. RM.	D20
ELEC. SYS.	D21
HAC	D22
MECHANICAL	D23
ELECTRICAL	D24
Grand total: 141	

0 4' 8' 16'
SCALE: 1/8" = 1'-0"

FINAL SUBMISSION

CONSULTANTS: <div>CIVIL KENNETH HORNE & ASSOCIATES 7201 NORTH 8TH AVENUE, STE. 6 PENSACOLA, FLORIDA 32504 PH: (850) 471-9005 FX: (850) 471-0053</div> <div>COMM/DS- SCHMIDT CONSULTING GROUP, INC. 40 S. PALMFOX PLACE, STE. 300 PENSACOLA, FLORIDA 32502 PH: (850) 438-0080 FX: (850) 432-8831</div> <div>SURVEYORS KGI TECHNOLOGIES, INC. 10401 HIGHLAND MANOR DRIVE, SUITE 100 TAMPA, FLORIDA 33600 PH: (813) 740-2500</div>			ARCHITECT/ENGINEERS: <div>BES DESIGN/BUILD LLC No. 29795</div> <div>BES DESIGN/BUILD, LLC 766 Middle St. Fairhope, AL 36532 Phone: 251.990.5778 Fax: 251.990.3716</div>		Drawing Title HVAC POWER PLAN Approved: Project Director	Project Title PANAMA CITY JOINT OUTPATIENT CLINIC VA GULF COAST HEALTH CARE Location PANAMA CITY, FLORIDA Date MARCH 2012	Building Number - Checked - Drawn GWS	Project Number 520-326 Drawing Number EP102 Dwg. 8 of 17	Office of Construction and Facilities Management Department of Veterans Affairs
---	--	--	---	--	--	---	---	--	---