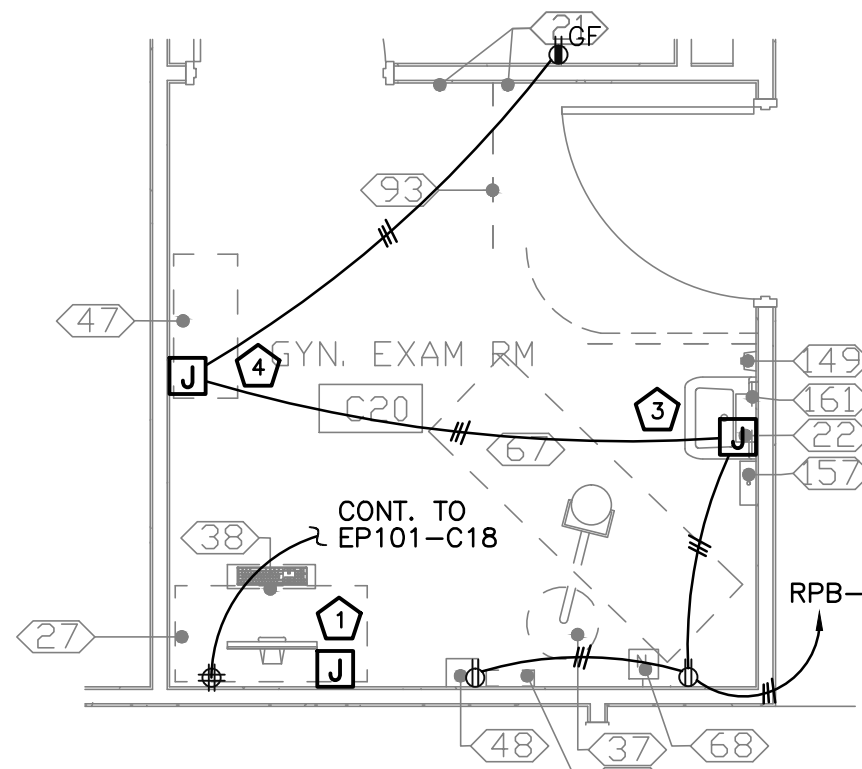
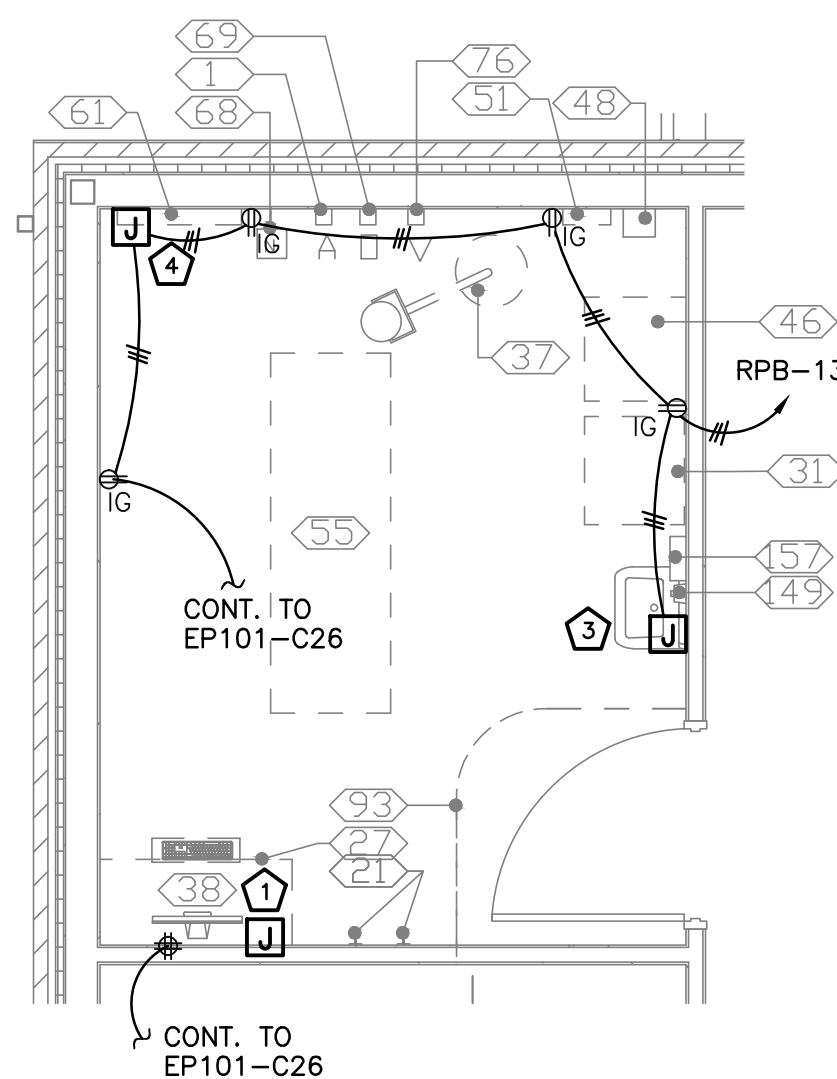


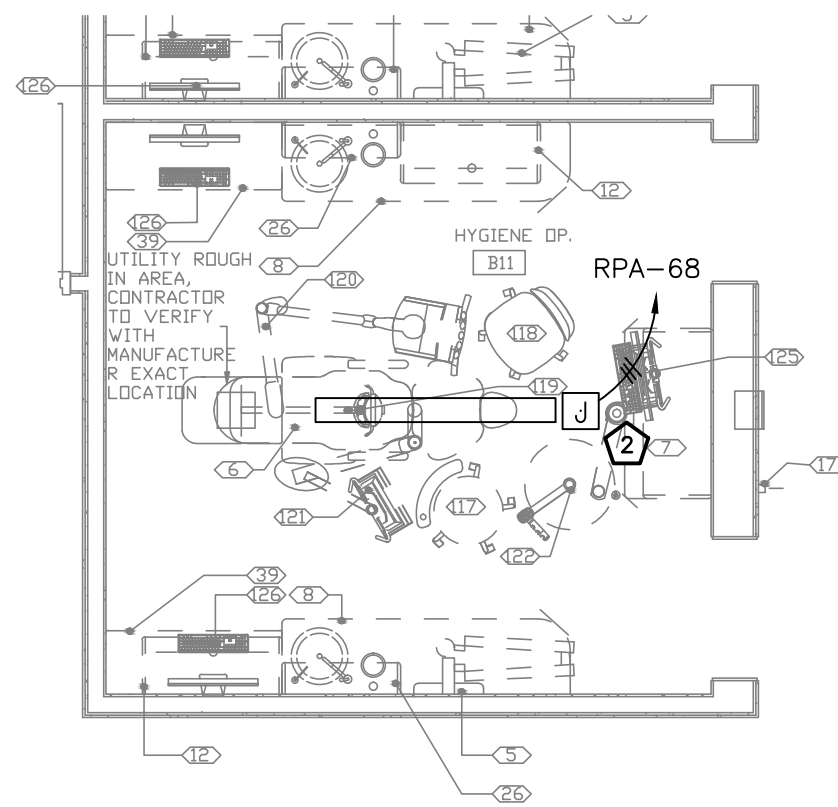
three inches = one foot
one and one half inches = one foot
one inch = one foot
three quarters inch = one foot
one half inch = one foot
three eighths inch = one foot
one quarter inch = one foot
one eighth inch = one foot



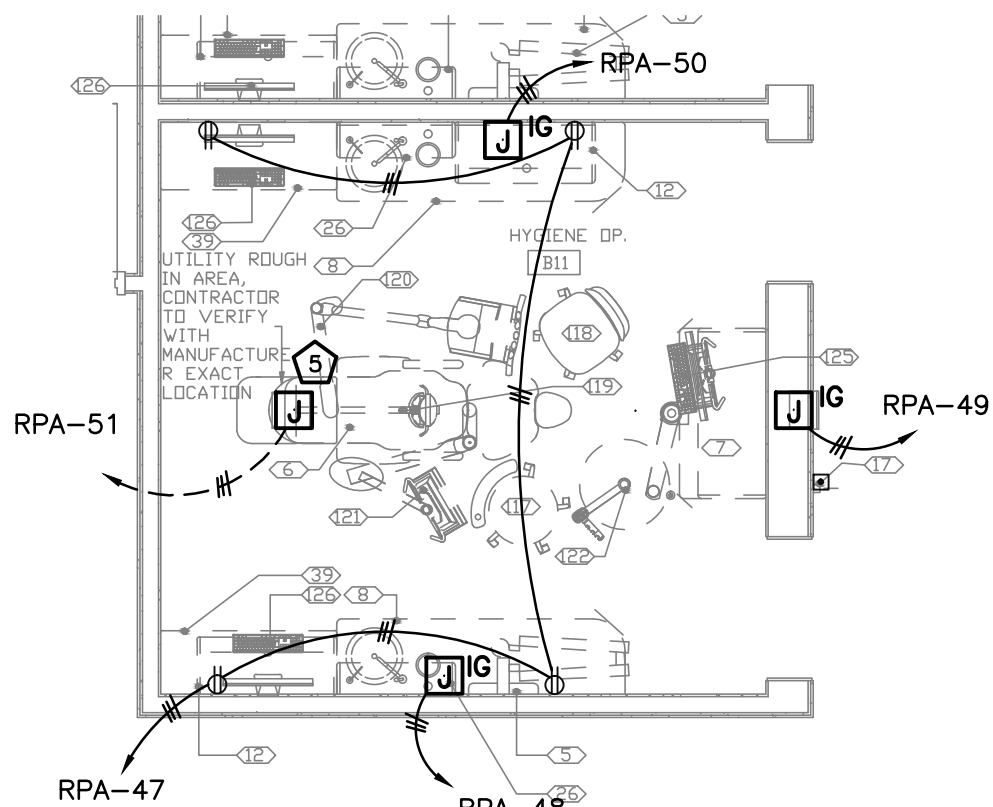
1 ENLARGED PLAN - ETM GYNECOLOGY EXAM ROOM
EP101 1/4" = 1'-0"



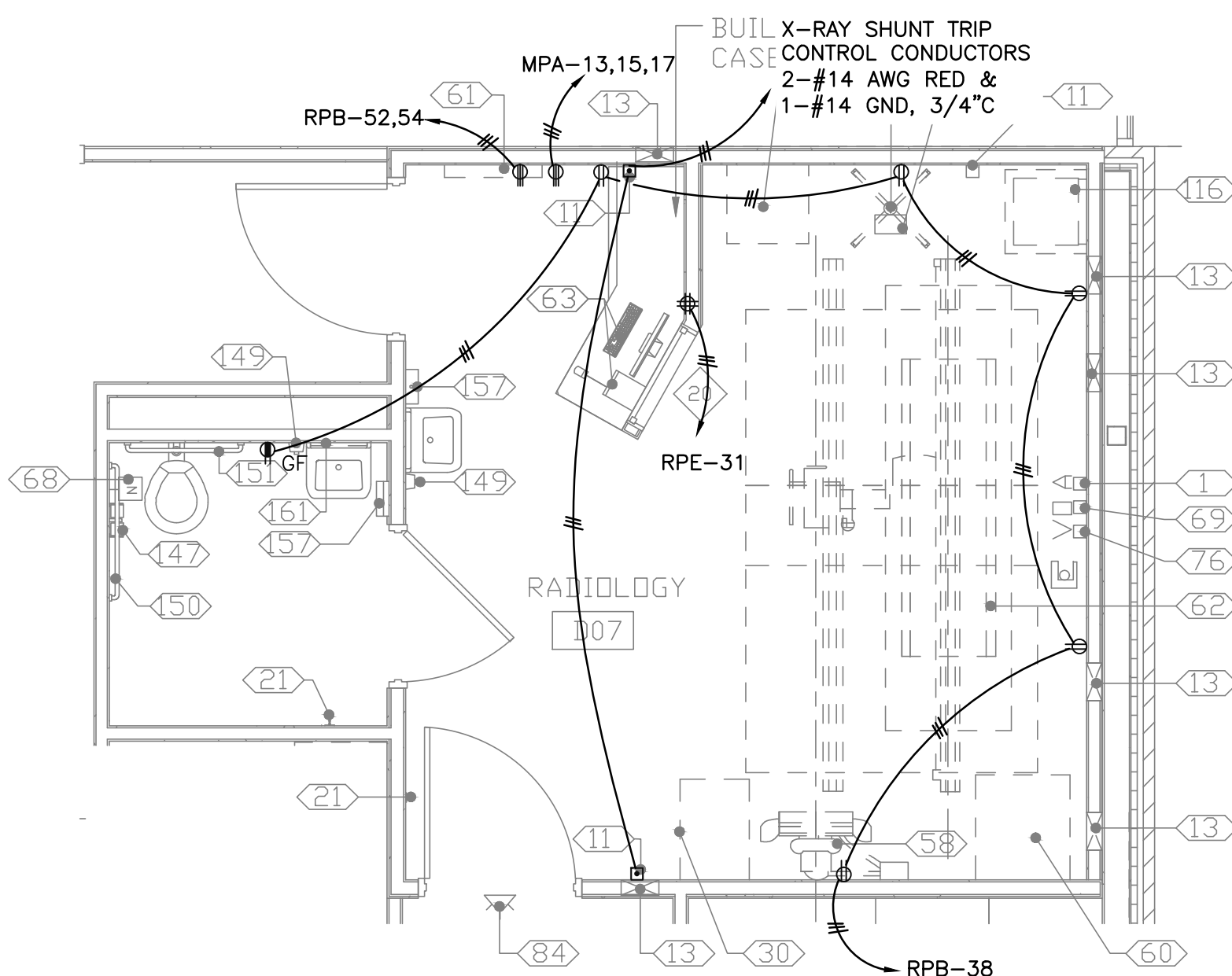
2 ENLARGED PLAN - MP PROCEDURE ROOM
EP101 1/4" = 1'-0"



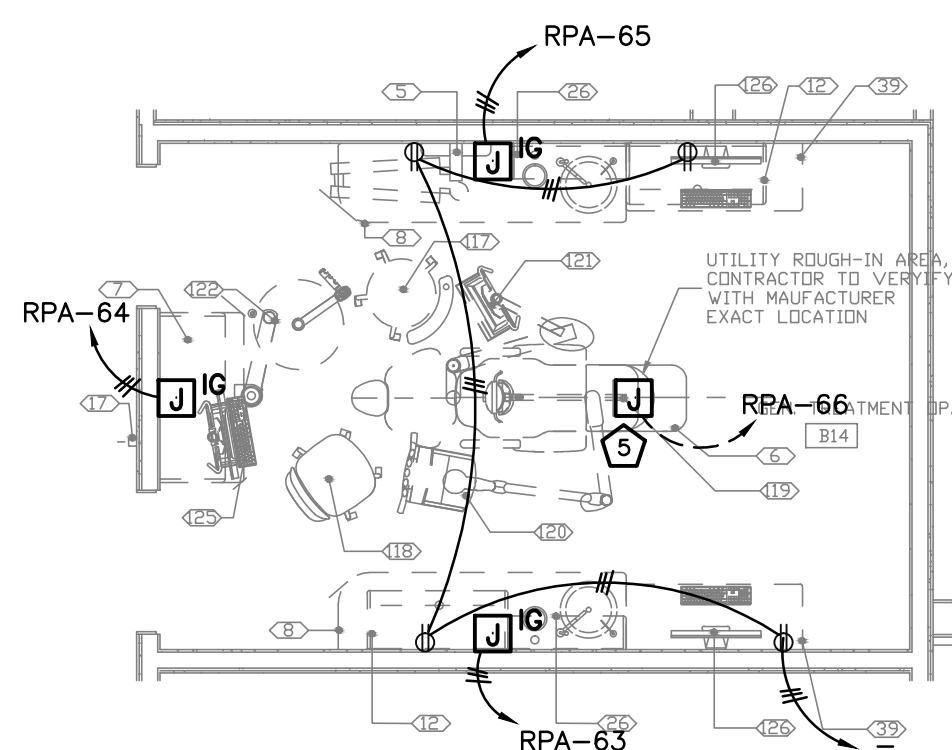
3 ENLARGED LIGHTING PLAN - COMBINED DENTAL HYGIENE OPERATOR
EP101 1/4" = 1'-0"



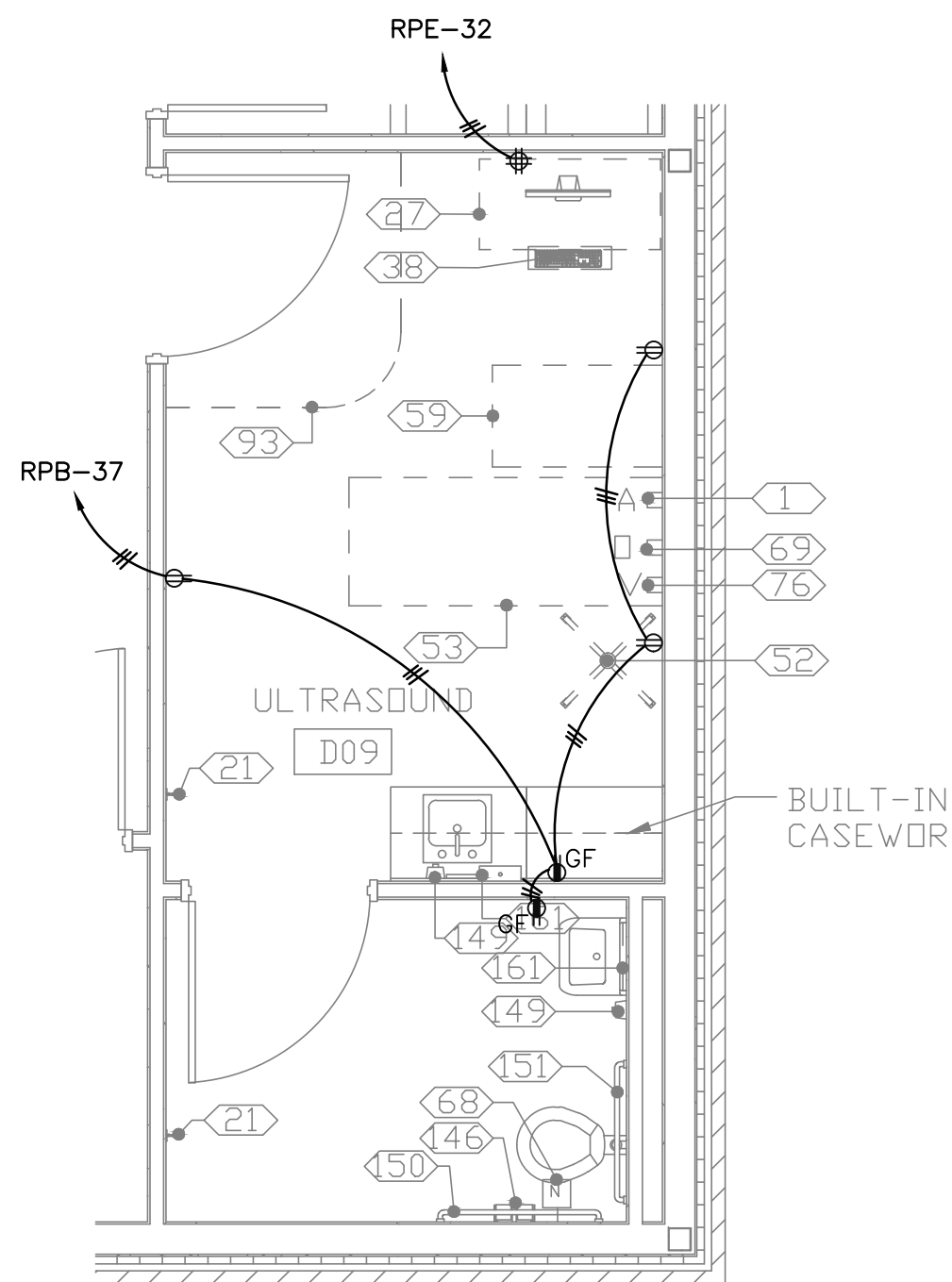
4 ENLARGED PLAN - COMBINED DENTAL HYGIENE OPERATOR
EP101 1/4" = 1'-0"



5 ENLARGED PLAN - RADIOLOGY
EP101 1/4" = 1'-0"



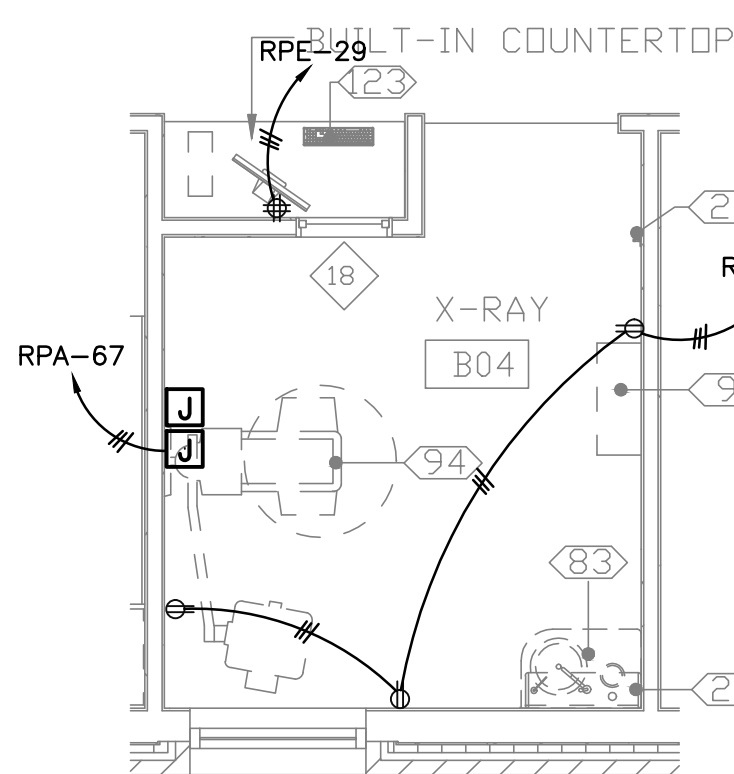
6 ENLARGED PLAN - GENERAL TREATMENT DENTAL OPERATOR
EP101 1/4" = 1'-0"



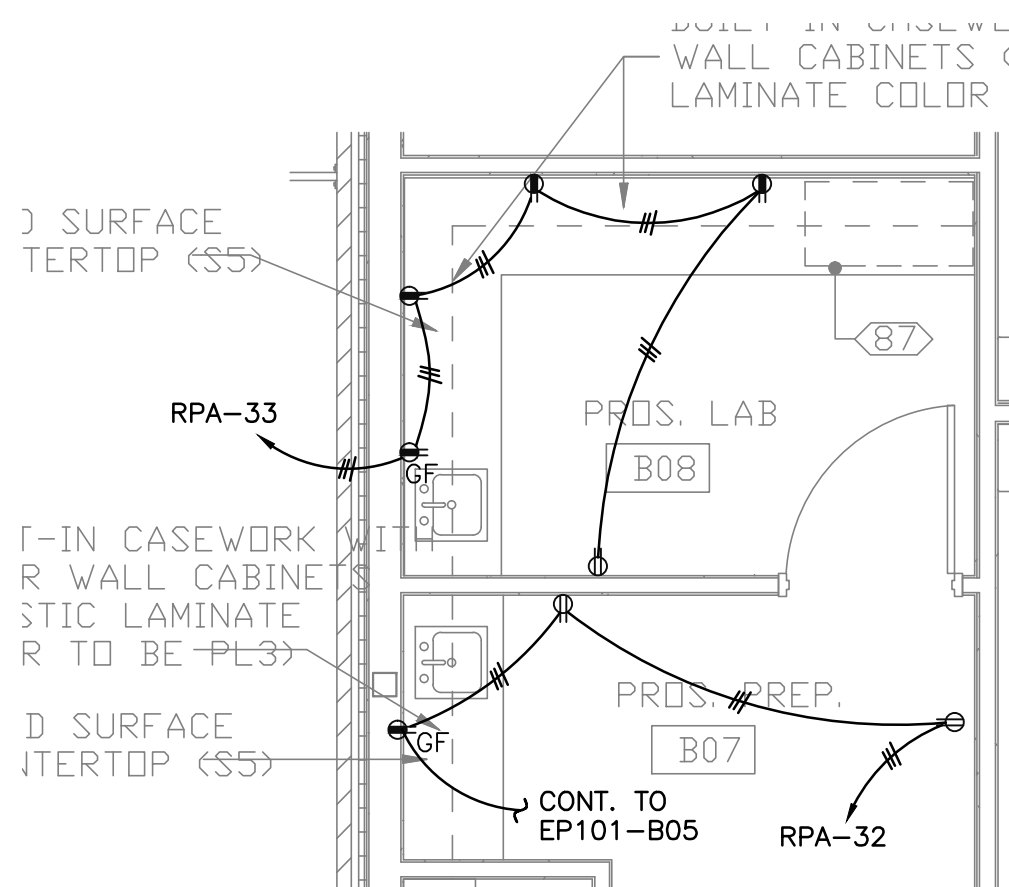
7 ENLARGED PLAN - ULTRASOUND
EP101 1/4" = 1'-0"

KEY NOTES (THIS SHEET ONLY)

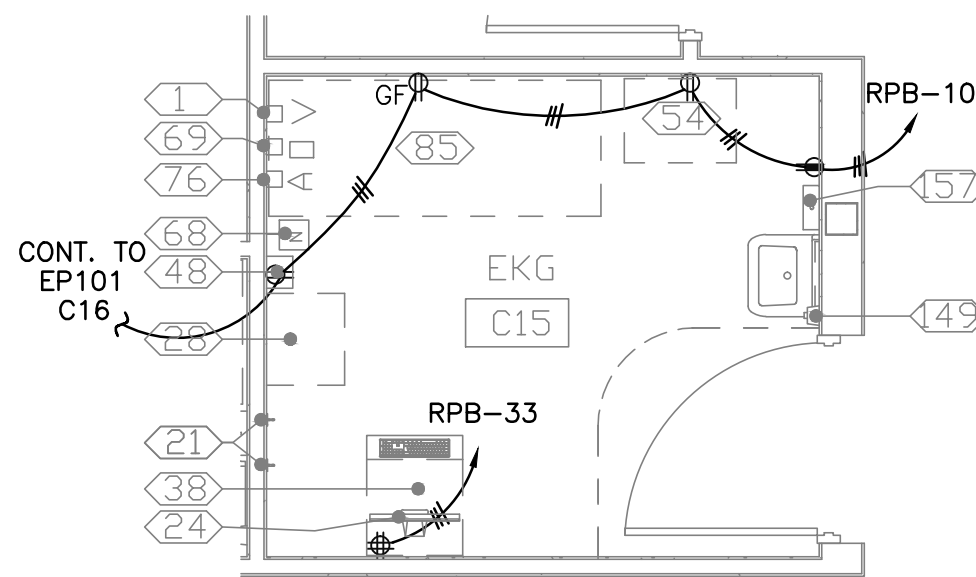
- 1 JUNCTION BOX BELOW WALL CABINET AND EMPTY RACEWAY FOR COUNTER TASK LIGHT (IF REQUIRED).
- 2 JUNCTION BOX FOR DENTAL TRACK LIGHTING.
- 3 JUNCTION BOX BELOW SINK FOR ELECTRONIC SENSOR OPERATED FAUCET.
- 4 JUNCTION BOX FOR X-RAY ILLUMINATOR.
- 5 JUNCTION BOX FOR DENTAL CHAIR POWER.



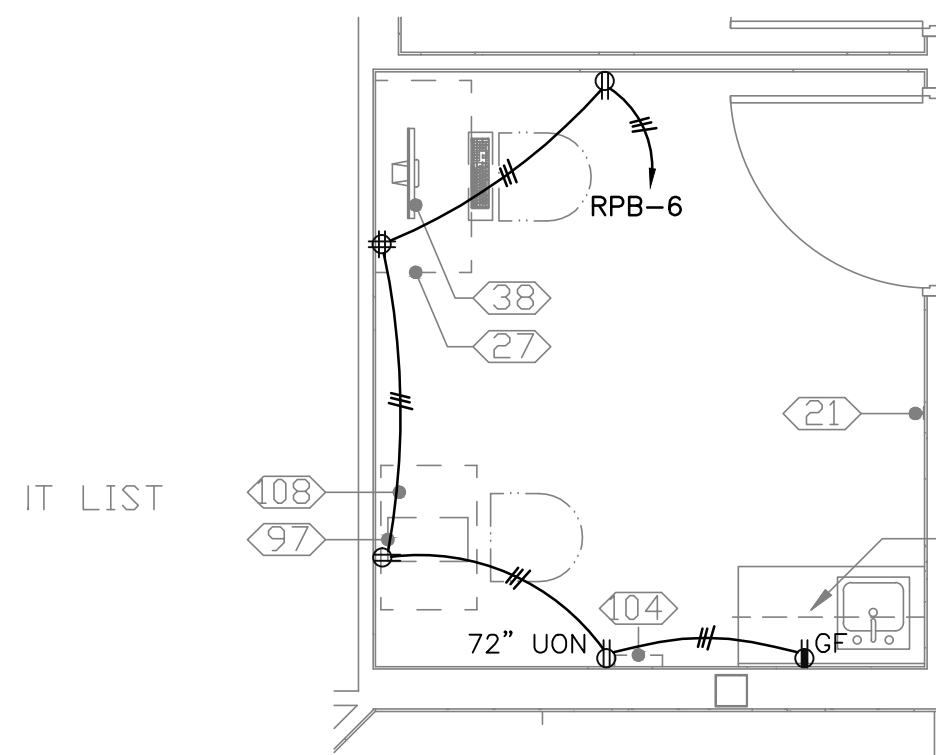
8 ENLARGED PLAN - DENTAL X-RAY
EP101 1/4" = 1'-0"



9 ENLARGED PLAN - DENTAL PROSTHETICS LAB
EP101 1/4" = 1'-0"



10 ENLARGED PLAN - EKG
EP101 1/4" = 1'-0"



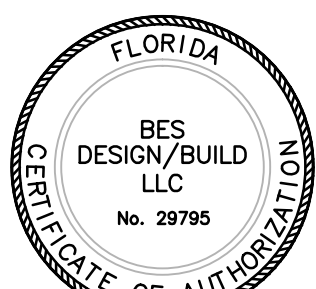
11 ENLARGED PLAN - VISION SCREENING
EP101 1/4" = 1'-0"

0 2' 4' 8'
SCALE: 1/4" = 1'-0"

FINAL SUBMISSION

Revisions	Date

CONSULTANTS:		
CIVIL: KENNETH HORNE & ASSOCIATES 7201 NORTH 6TH AVENUE, STE. 6 PENSACOLA, FLORIDA 32504 PH: (850) 471-9005 FX: (850) 471-0053	COMM/DS: SCHMIDT CONSULTING GROUP, INC. 40 S. PALMFOX PLACE, STE. 300 PENSACOLA, FLORIDA 32502 PH: (850) 438-0050 FX: (850) 432-8831	SURVEYORS: K2 TECHNOLOGIES, INC. 10401 IRLAND MANOR DRIVE, SUITE 120 TAMPA, FLORIDA 33610 PH: (813) 740-2500
LANDSCAPE ARCHITECT: CSA GROUP, INC. 6300 PICCADILLY SQUARE DRIVE MOBILE, ALABAMA 36608 PH: (251) 344-4023 FX: (251) 344-4052	ARCHITECTURE: BULLOCK TICE ASSOCIATES, INC. 909 EAST CERVANTES STREET PENSACOLA, FL 32201 PH: (850) 454-5444 FX: (850) 432-9208	



ARCHITECT/ENGINEERS:	
BES DESIGN/BUILD	
BES DESIGN/BUILD, LLC 766 Middle St. Fairhope, AL 36532 Phone: 251.990.5778 Fax: 251.990.3716	

Drawing Title ENLARGED ROOMS POWER PLAN	Approved: Project Director
--	----------------------------

Project Title PANAMA CITY JOINT OUTPATIENT CLINIC VA GULF COAST HEALTH CARE	Location PANAMA CITY, FLORIDA
Date MARCH 2012	Checked -
Drawn GWS	

Project Number 520-326	Drawing Number EP201
Building Number -	Dwg. 9 of 17

Office of Construction and Facilities Management	Department of Veterans Affairs
---	-----------------------------------