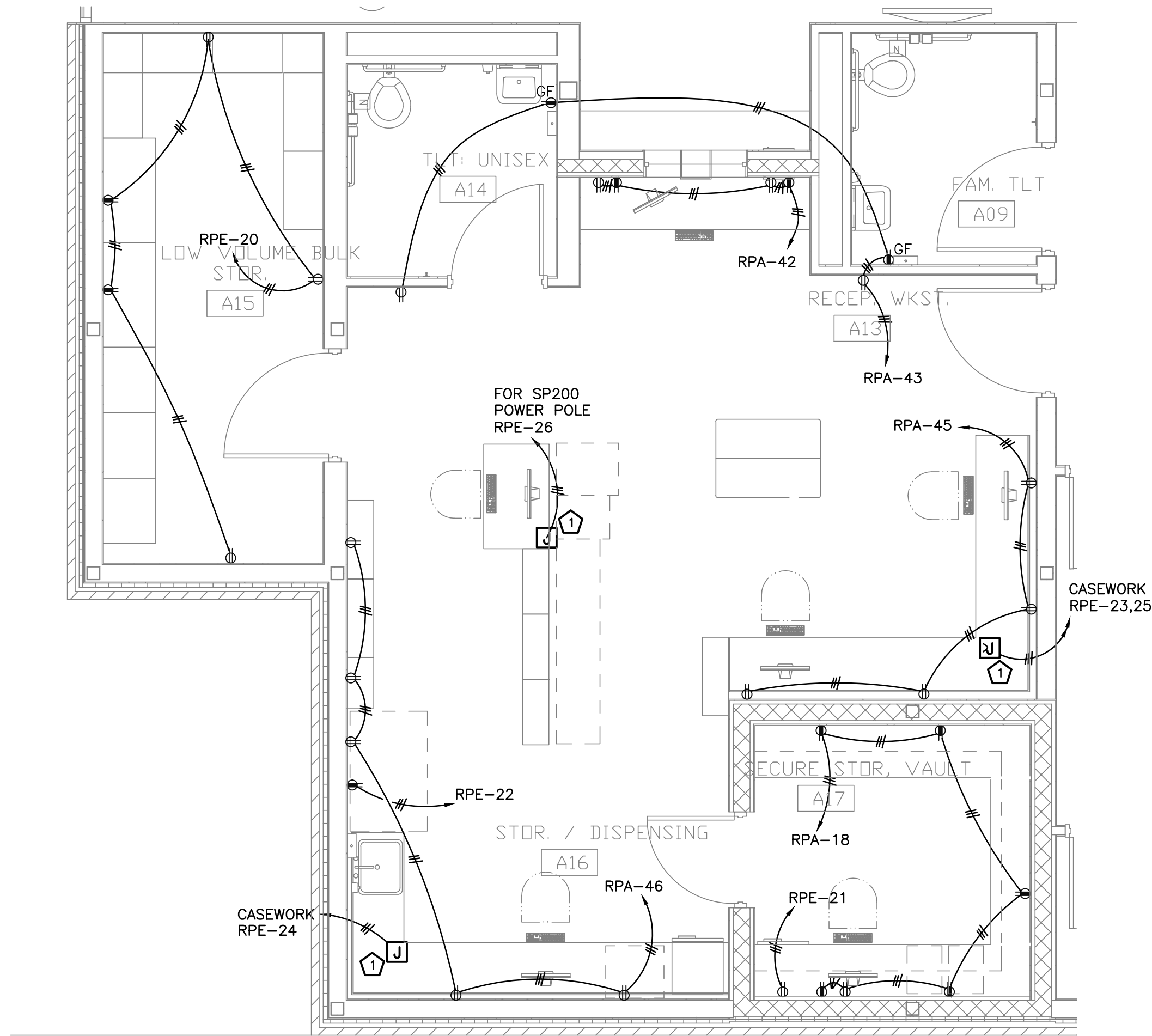
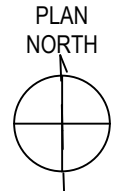
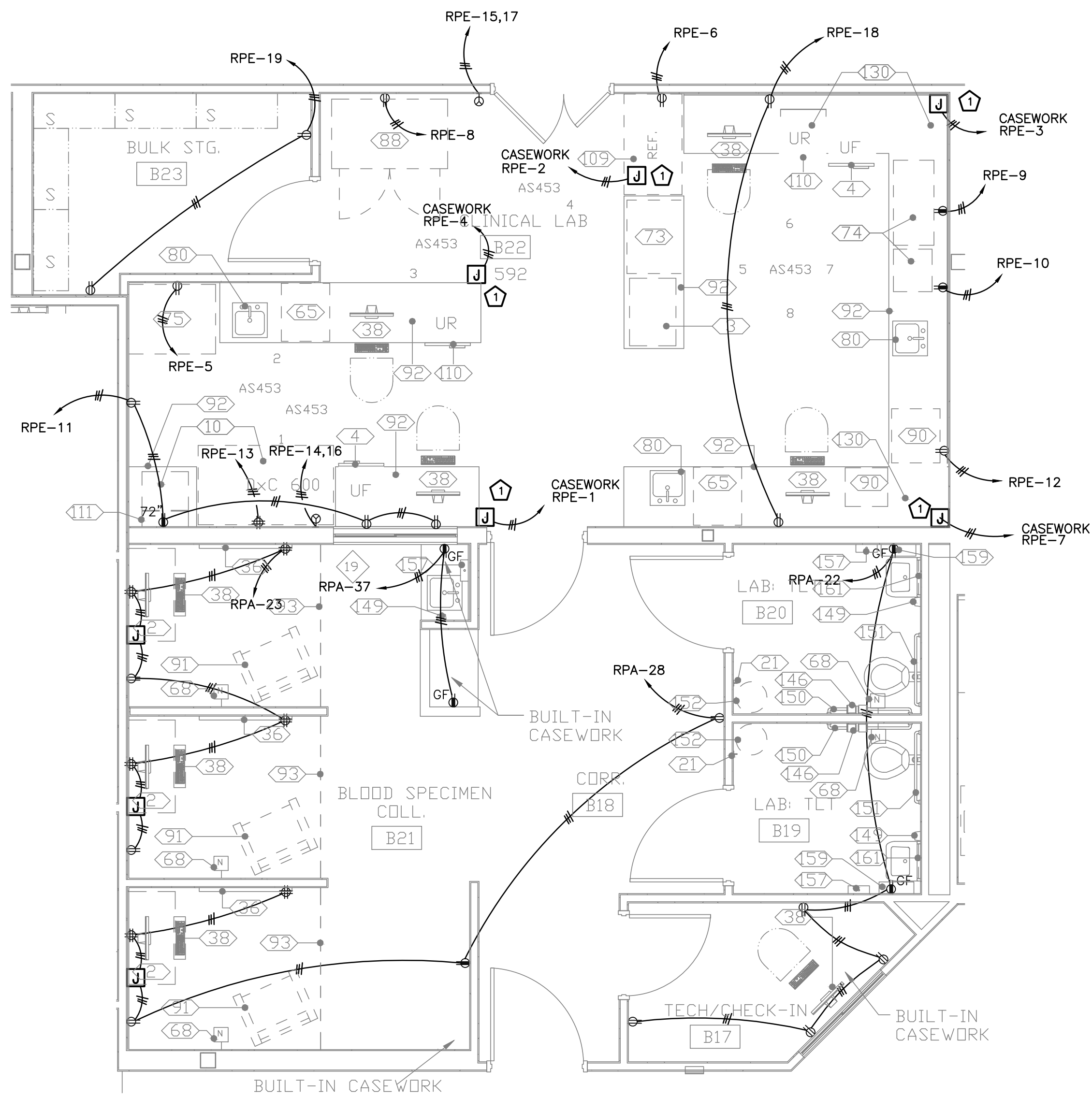


three inches = one foot
one and one half inches = one foot
one inch = one foot
three quarters inch = one foot
one half inch = one foot
three eighths inch = one foot
one quarter inch = one foot
one eighth inch = one foot



1
EP101 1/4" = 1'-0"



2
EP101 1/4" = 1'-0"

KEY NOTES (THIS SHEET ONLY)
ELECTRICAL JB INSTALLED ABOVE ACCESSIBLE CEILING FOR CASEWORK ELECTRICAL CONNECTIONS. VERIFY EXACT REQUIREMENTS WITH CASEWORK SUBMITTAL PRIOR TO ROUGH-IN. CONNECTION FROM JB TO CASEWORK SHALL BE FURNISHED BY CONTRACTOR.

GENERAL ELECTRICAL NOTES:
1. COORDINATE WITH TELECOMMUNICATION DESIGN FOR COMMUNICATION DEVICES LOCATED ADJACENT TO POWER. UNIFORM SPACING SHALL OCCUR BETWEEN WALL POWER AND WALL COMMUNICATION.
2. CIRCUITS IDENTIFIED BY CONNECTION TO PANEL "RPE" SHALL BE CONNECTED TO HOSPITAL GRADE DEVICES "RED" IN COLOR AS PER VA SPECIFICATION.

0 2' 4' 8'
SCALE: 1/4" = 1'-0"

FINAL SUBMISSION

CONSULTANTS: CIVIL: KENNETH HORNE & ASSOCIATES 7201 NORTH 8TH AVENUE, STE. 8 PENSACOLA, FLORIDA 32504 PH: (850) 471-9005 FX: (850) 432-8831 LANDSCAPE ARCHITECT: CSA GROUP, INC. 8300 PICCADILLY SQUARE DRIVE MOBILE, ALABAMA 36608 PH: (251) 344-4023 FX: (251) 344-4022 COMM/DS: SCHMIDT CONSULTING GROUP, INC. 40 S. PALMFOX PLACE, STE. 300 PENSACOLA, FLORIDA 32502 PH: (850) 438-0080 FX: (850) 432-8831 ARCHITECTURE: BULLOCK TICE ASSOCIATES, INC. 909 EAST CERVANTES STREET PENSACOLA, FL 32501 PH: (850) 434-5444 FX: (850) 432-9208 SURVEYORS: K2 TECHNOLOGIES, INC. 10401 HIRSHLAND MANOR DRIVE, SUITE 120 TAMPA, FLORIDA 33610 PH: (813) 740-2500			ARCHITECT/ENGINEERS: BES DESIGN/BUILD, LLC 766 Middle St. Fairhope, AL 36532 Phone: 251.990.5778 Fax: 251.990.3716			Drawing Title ENLARGED ROOMS POWER PLAN Approved: Project Director	Project Title PANAMA CITY JOINT OUTPATIENT CLINIC VA GULF COAST HEALTH CARE Location PANAMA CITY, FLORIDA Date MARCH 2012 Checked - Drawn GWS	Project Number 520-326 Building Number - Drawing Number EP202 Dwg 10 of 17	Office of Construction and Facilities Management
Revisions:			Date						