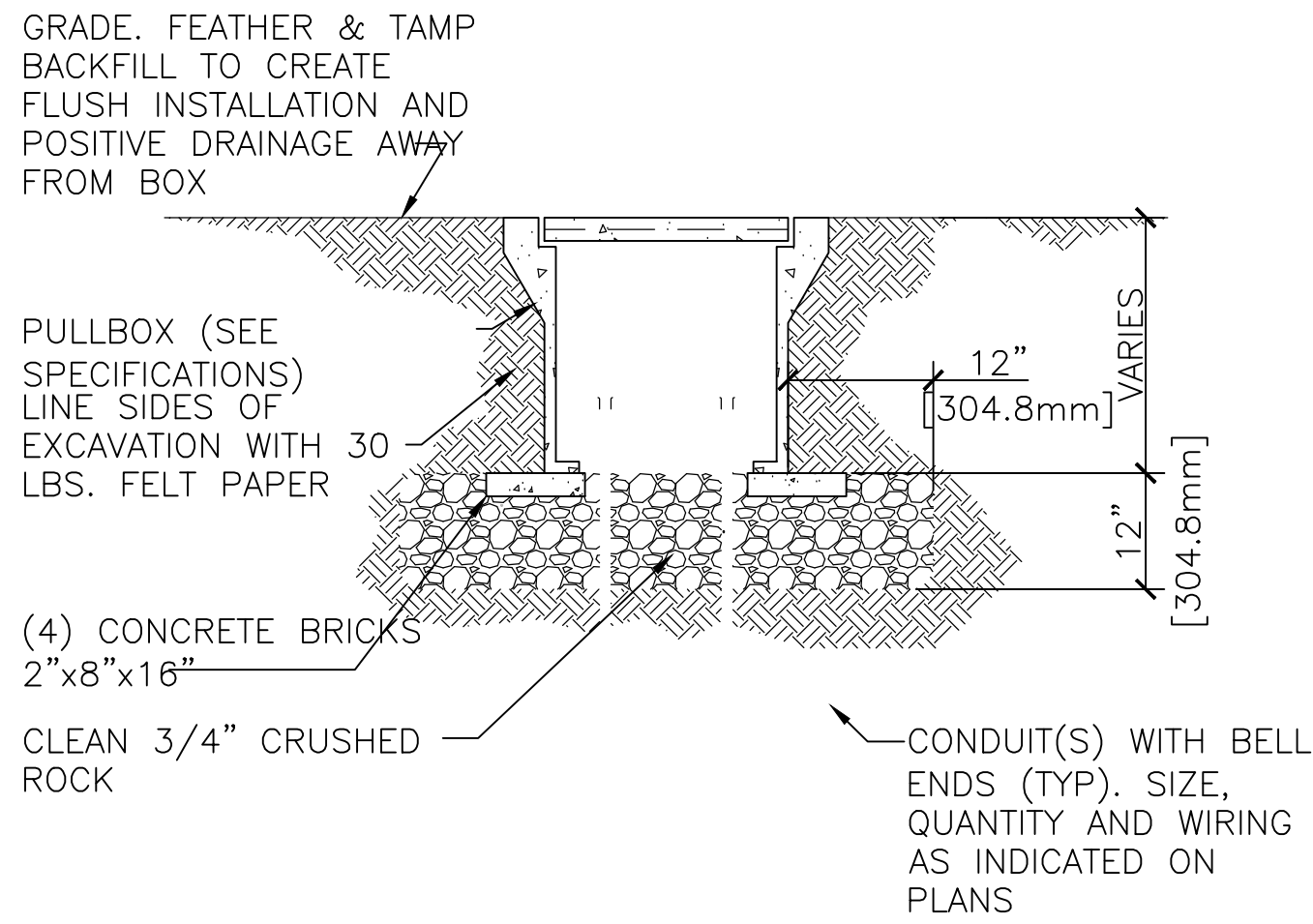
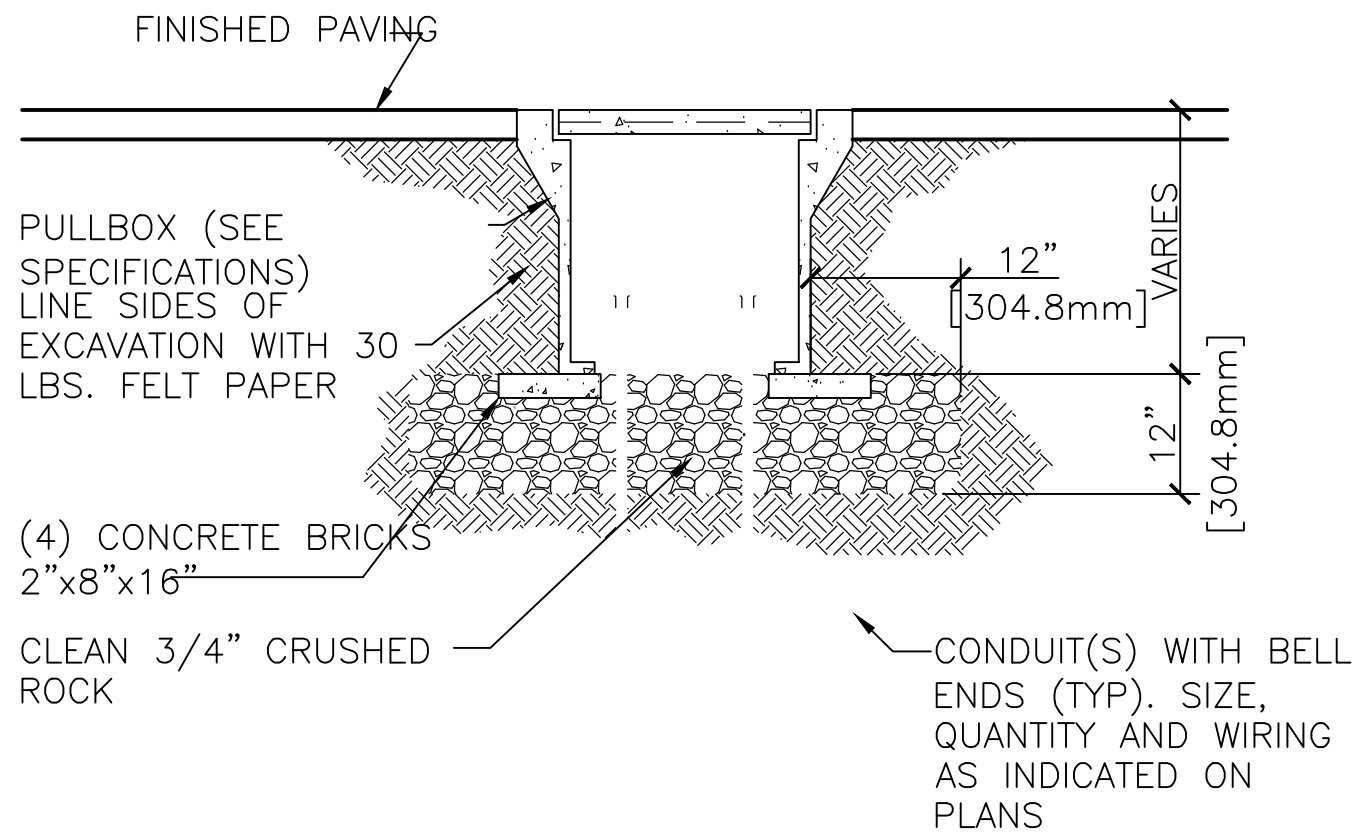


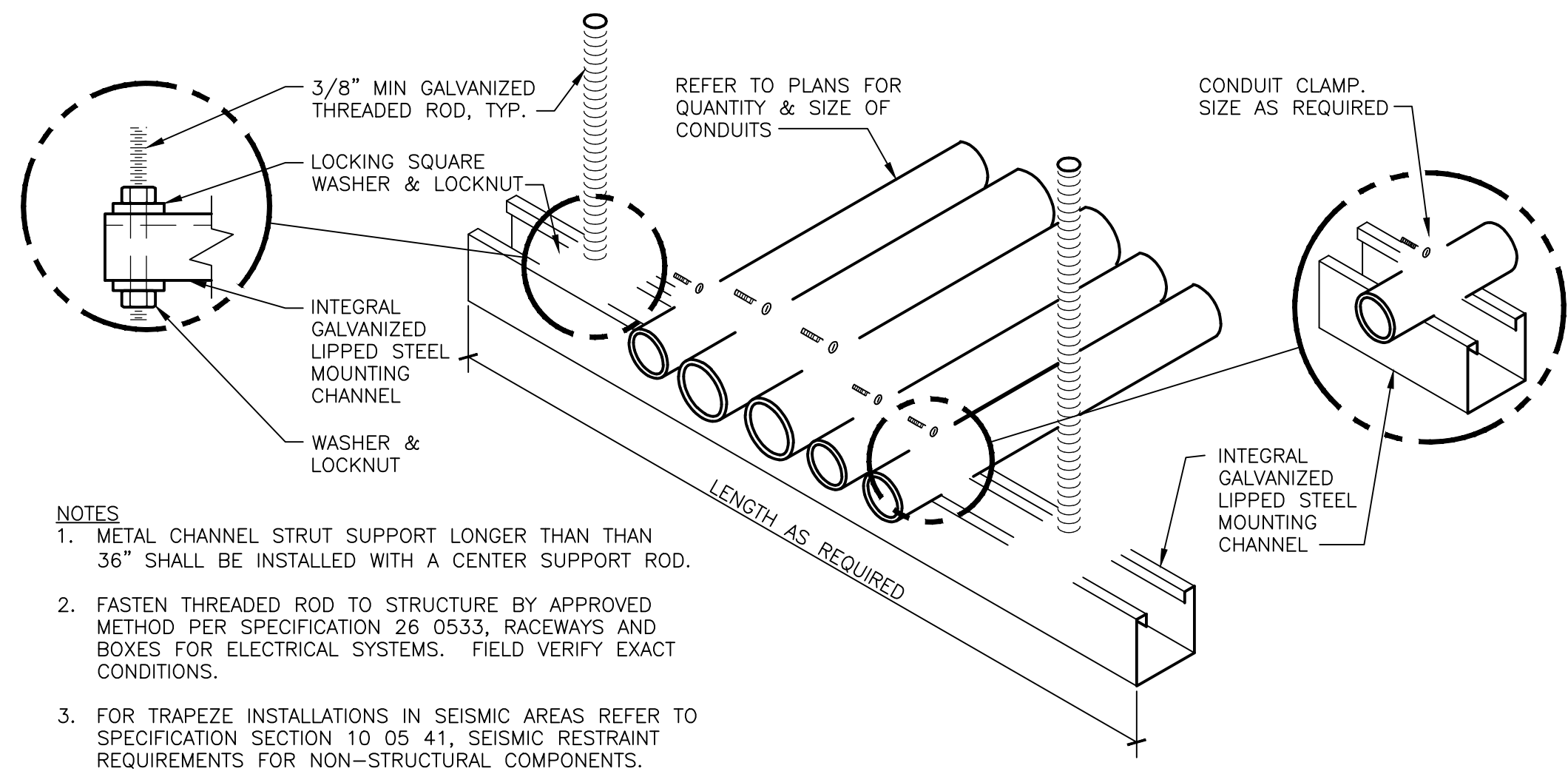
three inches = one foot
one and one half inches = one foot
one inch = one foot
three quarters inch = one foot
one half inch = one foot
one quarter inch = one foot
one eighth inch = one foot
one sixteenth inch = one foot



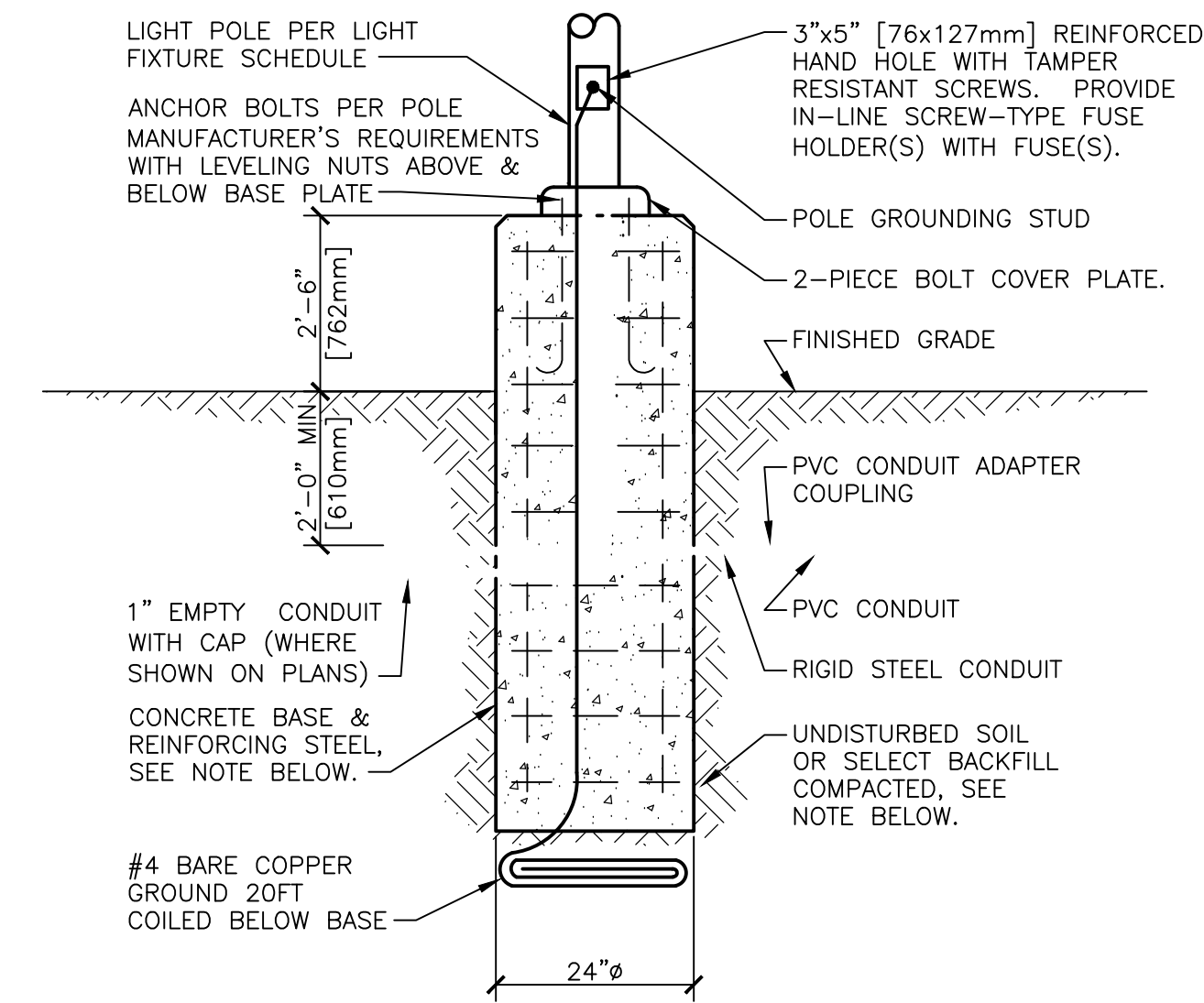
1 UNDERGROUND CONCRETE PULLBOX
SCALE: NONE
INSTALLATION IN TURF AREAS



2 UNDERGROUND CONCRETE PULLBOX
SCALE: NONE
INSTALLATION IN PAVED AREAS

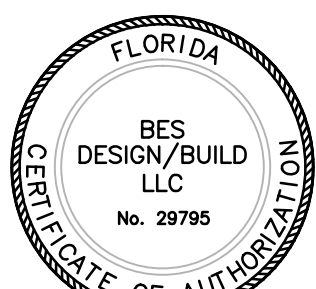


4 CONDUIT TRAPEZE MOUNTING DETAIL
NTS



3 POLE BASE DETAIL
NTS

CONSULTANTS:		
CIVIL: KENNETH HORNE & ASSOCIATES 7201 NORTH 8TH AVENUE, STE. 8 PENSACOLA, FLORIDA 32504 PH: (850) 471-9005 FX: (850) 471-0053	COMM/DS: SCHMIDT CONSULTING GROUP, INC. 40 S. PALMFOX PLACE, STE. 300 PENSACOLA, FLORIDA 32502 PH: (850) 438-0050 FX: (850) 432-8831	SURVEYORS: KGI TECHNOLOGIES, INC. 10401 HIGHLAND MANOR DRIVE, SUITE 120 TAMPA, FLORIDA 33610 PH: (813) 740-2500
LANDSCAPE ARCHITECT: CSA GROUP, INC. 8300 PICCADILLY SQUARE DRIVE MOBILE, ALABAMA 36608 PH: (251) 344-4023 FX: (251) 344-4022	ARCHITECTURE: BULLOCK TICE ASSOCIATES, INC. 909 EAST CERVANTES STREET PENSACOLA, FL 32501 PH: (850) 434-5444 FX: (850) 432-9208	



ARCHITECT/ENGINEERS:
BES DESIGN/BUILD
BES DESIGN/BUILD, LLC
766 Middle St. Fairhope, AL 36532
Phone: 251.990.5778 Fax: 251.990.3716

Drawing Title
ELECTRICAL DETAILS
Approved: Project Director

Project Title
**PANAMA CITY
JOINT OUTPATIENT CLINIC
VA GULF COAST HEALTH CARE**
Location
PANAMA CITY, FLORIDA
Date
MARCH 2012
Checked
-
Drawn
GWS

FINAL SUBMISSION
Project Number
520-326
Building Number
-
Drawing Number
EP300
Dwg. 11 of 17
Office of
Construction
and Facilities
Management
Department of
Veterans Affairs