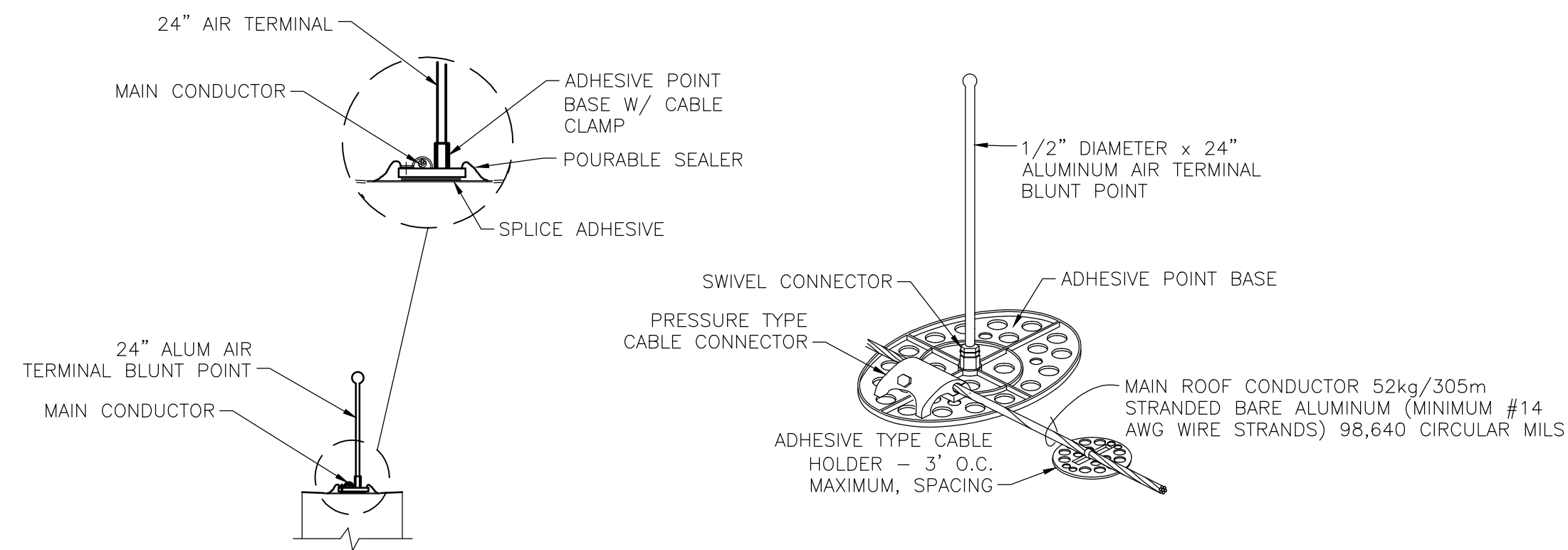


three inches = one foot
one and one half inches = one foot
one inch = one foot
one inch = one foot
three quarters inch = one foot
one half inch = one foot
one half inch = one foot
three eighths inch = one foot
one quarter inch = one foot
one eighth inch = one foot
one eighth inch = one foot

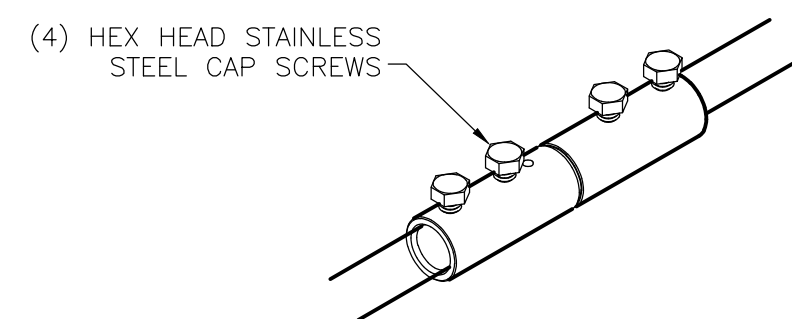


1 AIR TERMINAL "A" INSTALLATION DETAIL

NTS

NOTE:

1. PROVIDE BLOCKING AND ADHESIVE BASES SO THAT MAIN AND SECONDARY LIGHTNING PROTECTION CONDUCTORS DO NOT COME IN CONTACT WITH STRUCTURE. MAXIMUM SPACING 3'-0"

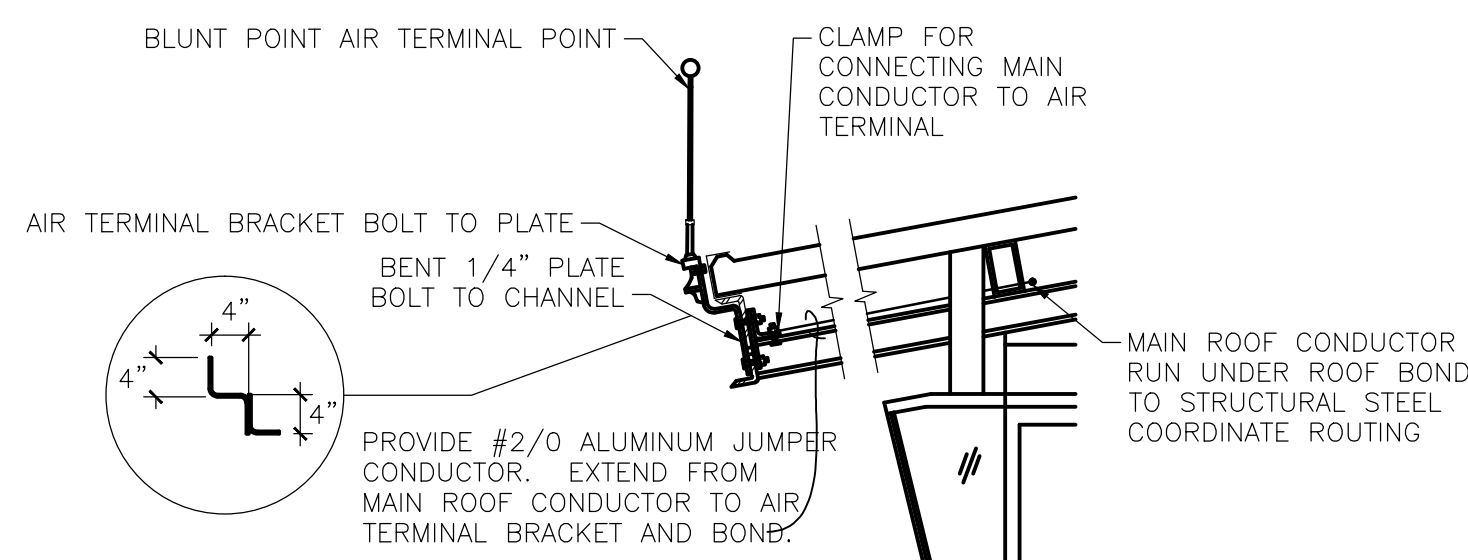


NOTE:

1. BI-METALLIC CONNECTOR SHALL BE UTILIZED TO PROVIDE A NON-ELECTROLYTIC CONNECTION BETWEEN ALUMINUM DOWN CONDUCTOR AND COPPER GROUND CONDUCTORS.

3 BI-METAL CONNECTOR

NTS

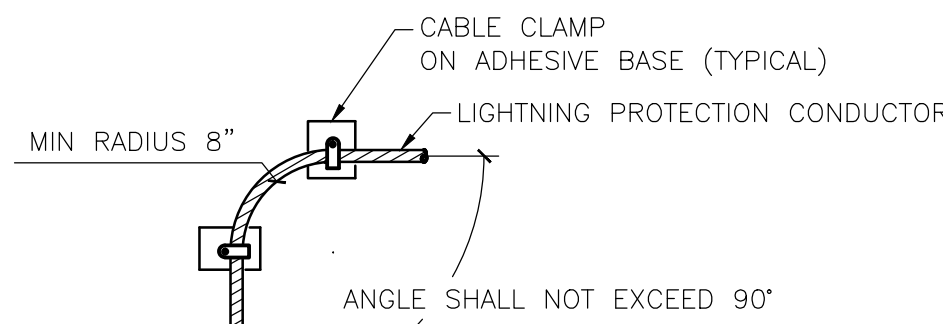


NOTE:

1. CLASS I ALUMINUM DOWN CONDUCTOR. FASTEN TO ADJACENT SURFACE AT 3' INTERVALS AND BOND TO ALL CONDUCTIVE MATERIALS IN CLOSE PROXIMITY. COMPONENTS AND MATERIALS SHALL COMPLY WITH AND BE INSTALLED IN ACCORDANCE WITH NFPA 78.

5 AIR TERMINAL "B" INSTALLATION DETAIL

NTS

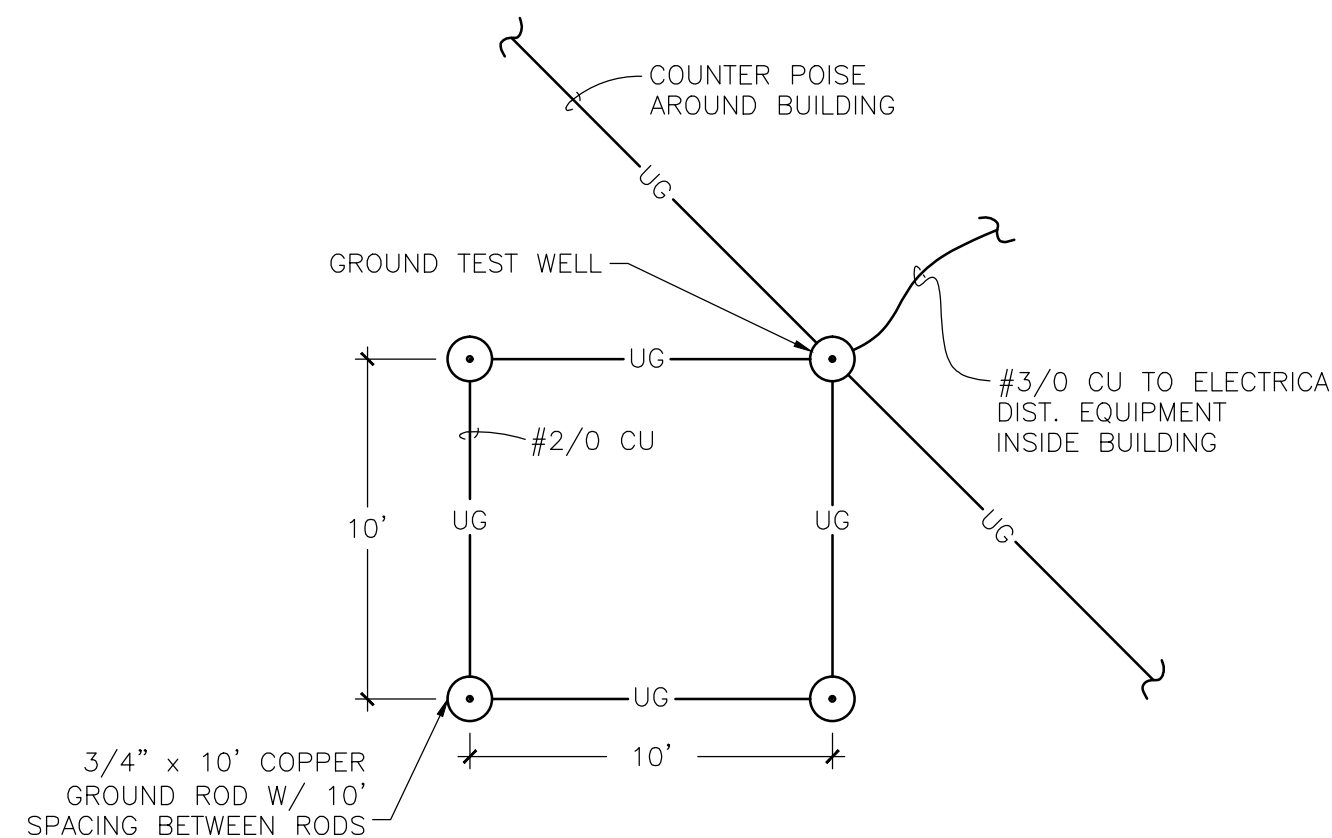


NOTE:

1. PROVIDE BLOCKING AND ADHESIVE BASES SO THAT MAIN AND SECONDARY LIGHTNING PROTECTION CONDUCTORS DOES NOT COME IN CONTACT WITH RUBBER ROOF SURFACE. MAXIMUM SPACING 3'-0"

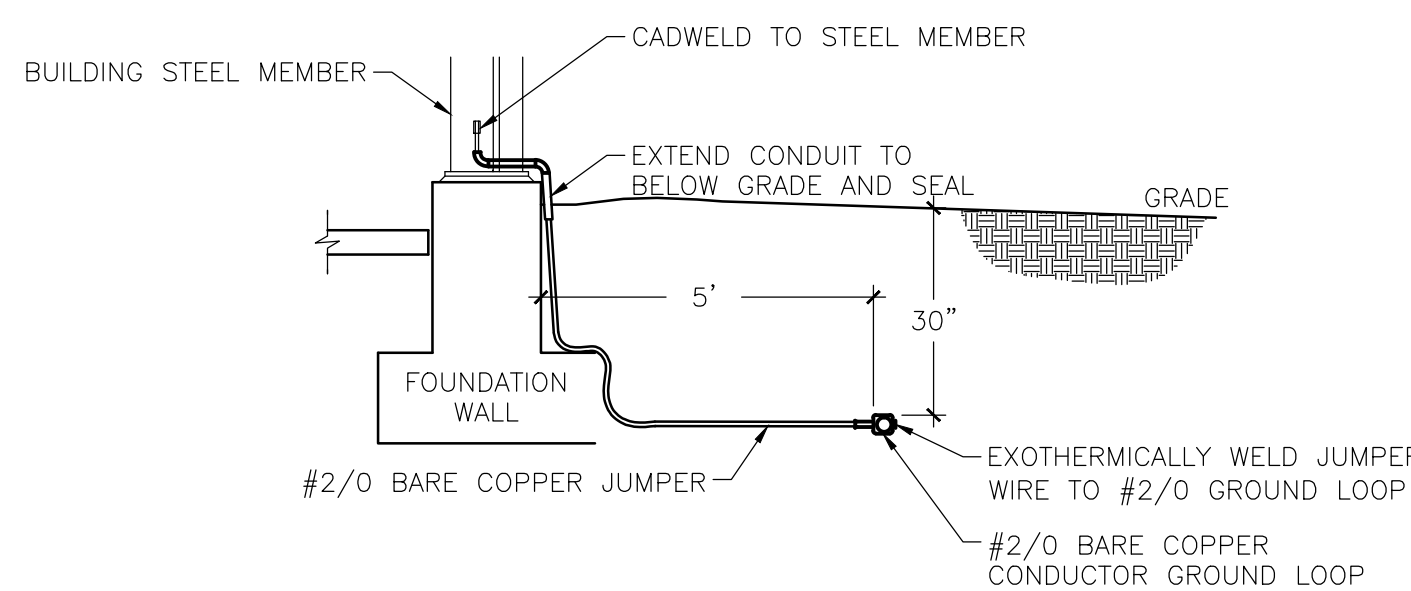
2 CONDUCTOR INSTALLATION DETAIL

NTS



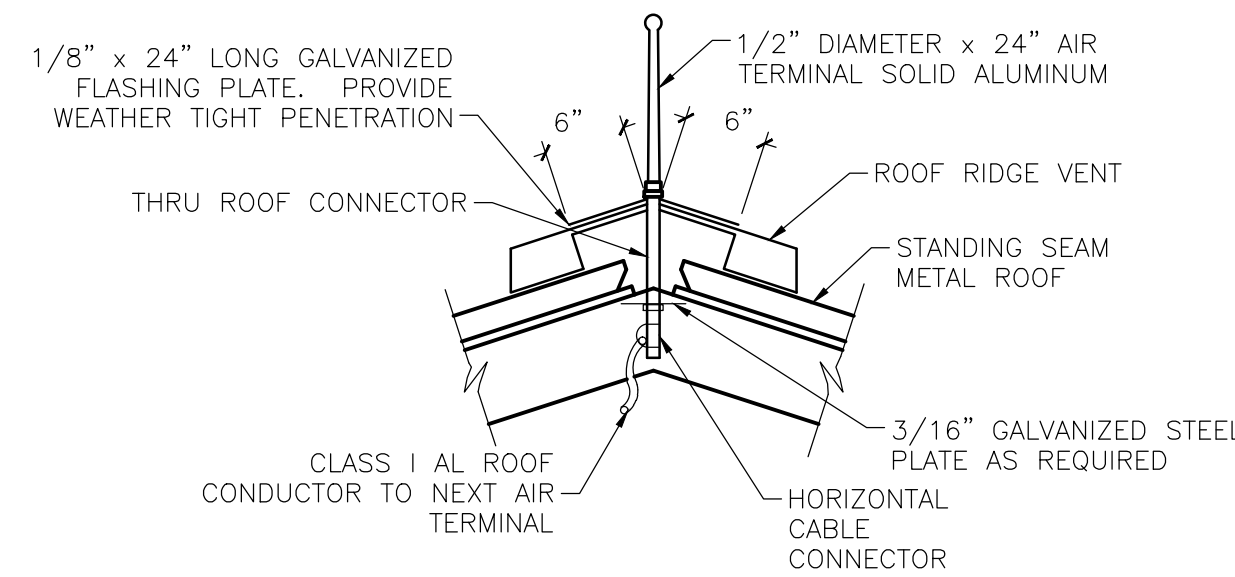
4 ELECTRICAL SYSTEM GROUND GRID DETAIL

NTS



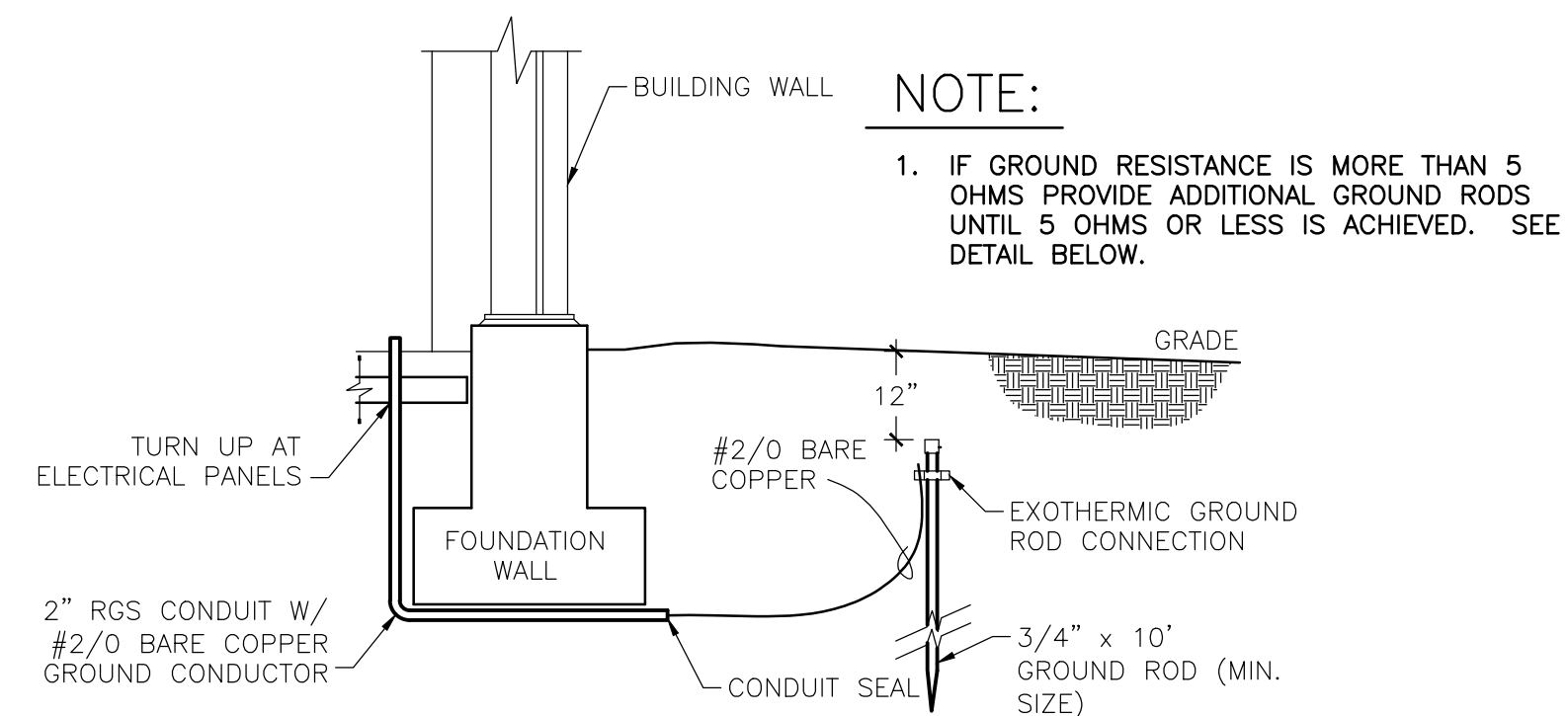
6 BLDG. GROUND TYPICAL INSTALLATION DETAIL

NTS



7 AIR TERMINAL "C" DETAIL

NTS



8 GROUND ROD INSTALLATION DETAIL

NTS

GENERAL NOTES:

1. THE LIGHTNING PROTECTION SYSTEM SHALL BE INSTALLED TO COMPLY WITH THE REQUIREMENTS OF UL #96A "MASTER LABEL" AND EACH BUILDING FURNISHED WITH A PLAQUE STATING SAME.
2. ALL METAL PROTRUSIONS THROUGH ROOF AND ON ROOF SHALL BE GROUNDED W/ #4 MINIMUM SIZE CONDUCTOR.
3. ALL GROUND CONNECTIONS SHALL BE WELDED.
4. THIS SYSTEM IS DESIGNED AROUND COPPER GROUND COMPONENTS AND ALUMINUM LIGHTNING PROTECTION COMPONENTS.
5. INCOMING METAL UTILITY LINES (WATER, ELECTRIC CONDUITS, ETC.) SHALL BE CONNECTED TO GROUND SYSTEM.
6. COORDINATE W/ ROOFING CONTRACTOR FOR LOCATIONS OF ANY ROOF PENETRATIONS REQUIRED BY LIGHTNING PROTECTIONS SYSTEM TO HAVE LEAK TIGHT PENETRATION.
7. ROOF CONDUCTORS SHALL BE FASTENED AT LEAST EVERY 0.9 METER, PER NFPA 780.

CONSULTANTS:			ARCHITECT/ENGINEERS:			Drawing Title LIGHTNING PROTECTION DETAILS		Project Title PANAMA CITY JOINT OUTPATIENT CLINIC VA GULF COAST HEALTH CARE		Project Number 520-326		Office of Construction and Facilities Management						
CIVIL: KENNETH HORNE & ASSOCIATES 7201 NORTH 8TH AVENUE, STE 8 PENSACOLA, FLORIDA 32504 PH: (850) 471-9005 FX: (850) 471-0053			COMM/DS: SCHMIDT CONSULTING GROUP, INC. 40 S. PALMFOX PLACE, STE 300 PENSACOLA, FLORIDA 32502 PH: (850) 438-0050 FX: (850) 432-8831			SURVEYORS: KGI TECHNOLOGIES, INC. 10401 HIGHLAND MANOR DRIVE, SUITE 100 TAMPA, FLORIDA 33610 PH: (813) 740-2500			Building Number -		Drawing Number EG103 Dwg 17 of 17							
LANDSCAPE ARCHITECT: CSA GROUP, INC. 6900 PROBABLY SQUARE DRIVE MOBILE, ALABAMA 36609 PH: (251) 344-4023 FX: (251) 344-4052			ARCHITECTURE: BULLOCK TICE ASSOCIATES, INC. 909 EAST CERVANTES STREET PENSACOLA, FL 32501 PH: (850) 434-5444 FX: (850) 432-9208			BES DESIGN/BUILD, LLC 766 Middle St, Fairhope, AL 36532 Phone: 251.990.5778 Fax: 251.990.3716			Location PANAMA CITY, FLORIDA		Date MARCH 2012			Checked -		Drawn GWS		
Revisions:			Date			Approved: Project Director			Project Number 520-326		Building Number -			Drawing Number EG103 Dwg 17 of 17		Department of Veterans Affairs		