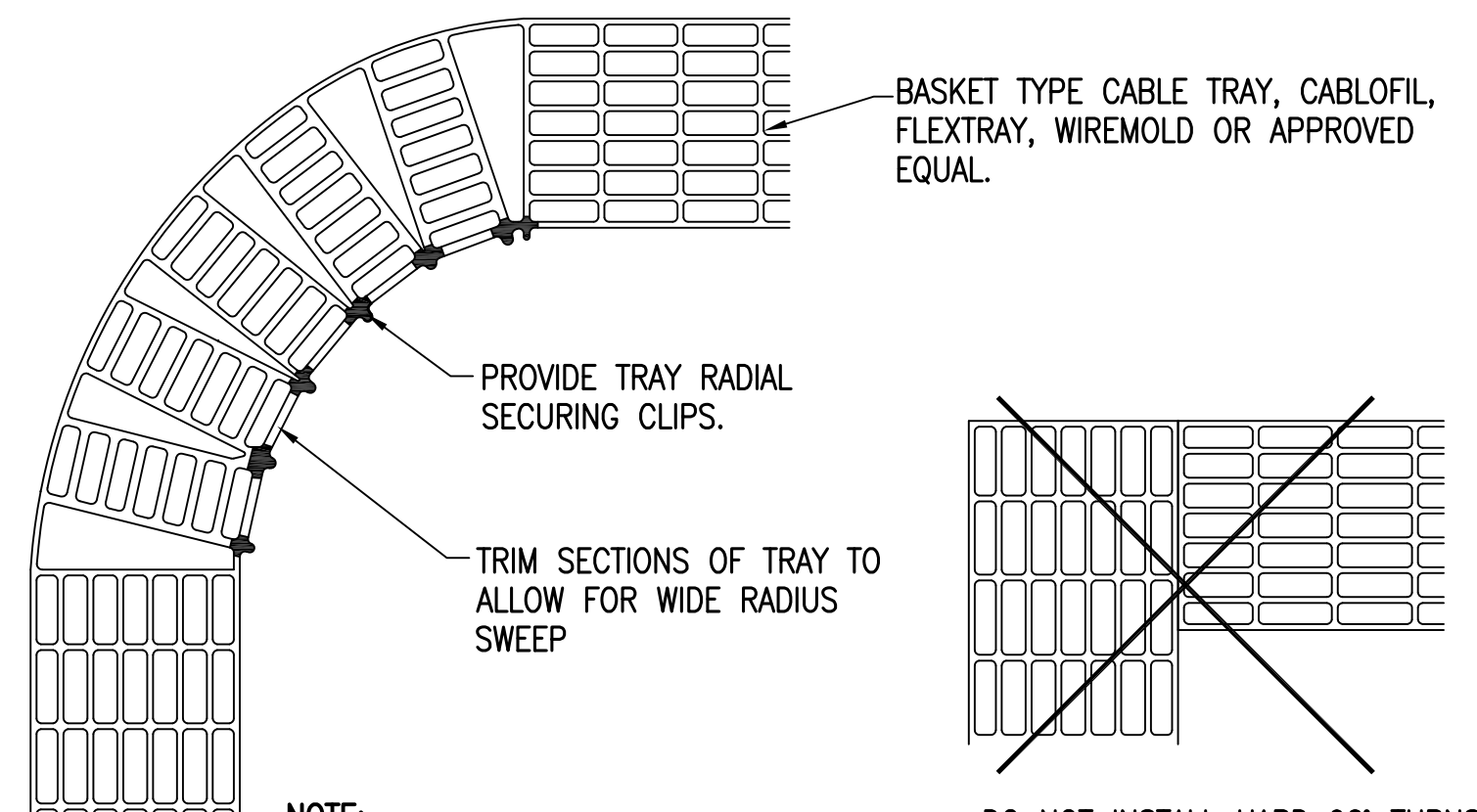


*** NOTES:**

- 1) COMMUNICATIONS OUTLET (CO) MOUNTING HEIGHT MAY VARY AT CABINETS OR CASEWORK. LOCATE AND MOUNT CO'S AS DIRECTED BY ARCHITECT IN FIELD. MATCH HEIGHT OF ADJACENT ELECTRICAL POWER OUTLETS.
- 2) MOUNTING HEIGHT OF COMMUNICATIONS OUTLET (CO) SHOWN TO BE MOUNTED ABOVE COUNTER (AC) SHALL BE COORDINATED WITH THE ARCHITECT AND THE GENERAL CONTRACTOR IN THE FIELD PRIOR TO ROUGH-IN.

1 TYPICAL COMMUNICATIONS OUTLET (CO) MOUNTING DETAIL

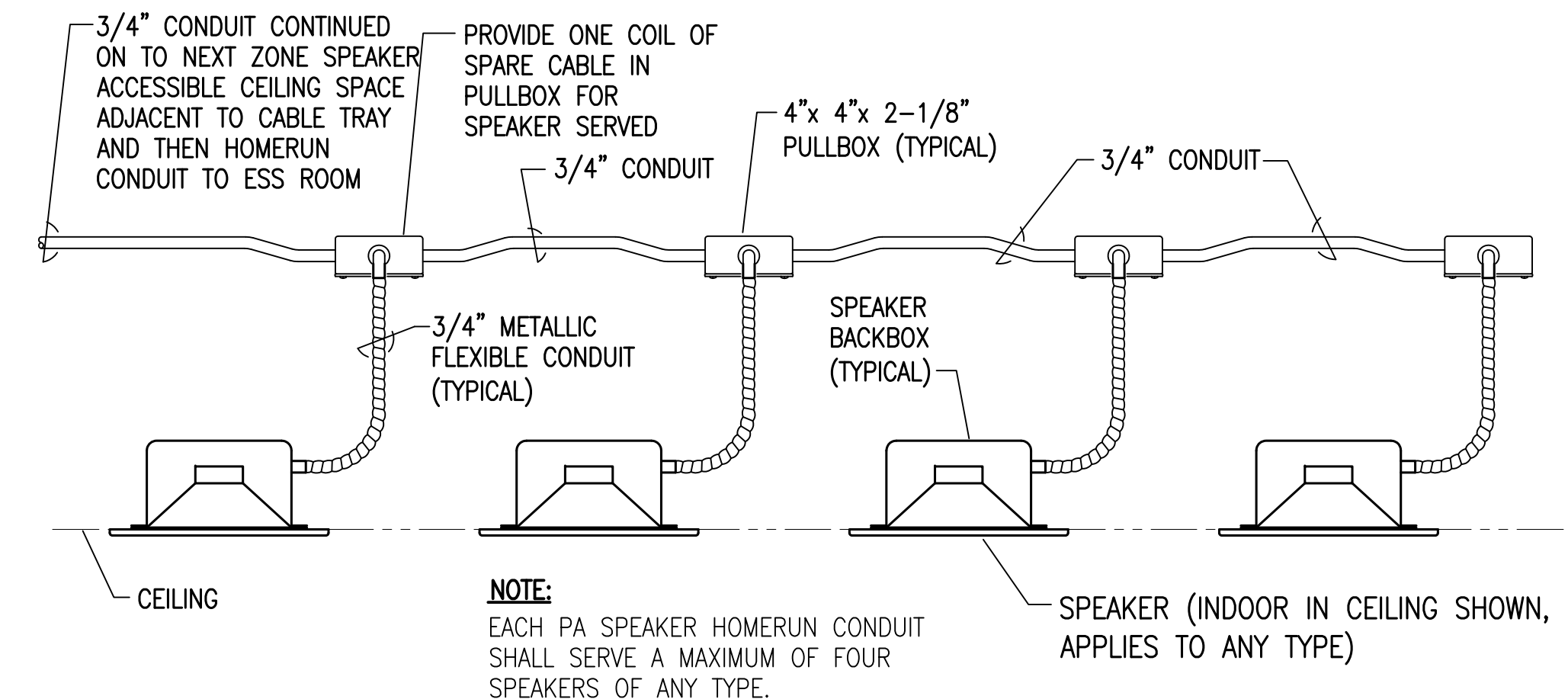
TN503
NOT TO SCALE



NOTE: RADIAL DIMENSIONS WILL VARY FOR LARGER CABLE TRAYS. REFER TO CABLE TRAY MANUFACTURER REQUIREMENTS AND INSTRUCTIONS FOR PROPER INSTALLATION.

2 CABLE TRAY SWEEPING BEND DETAIL

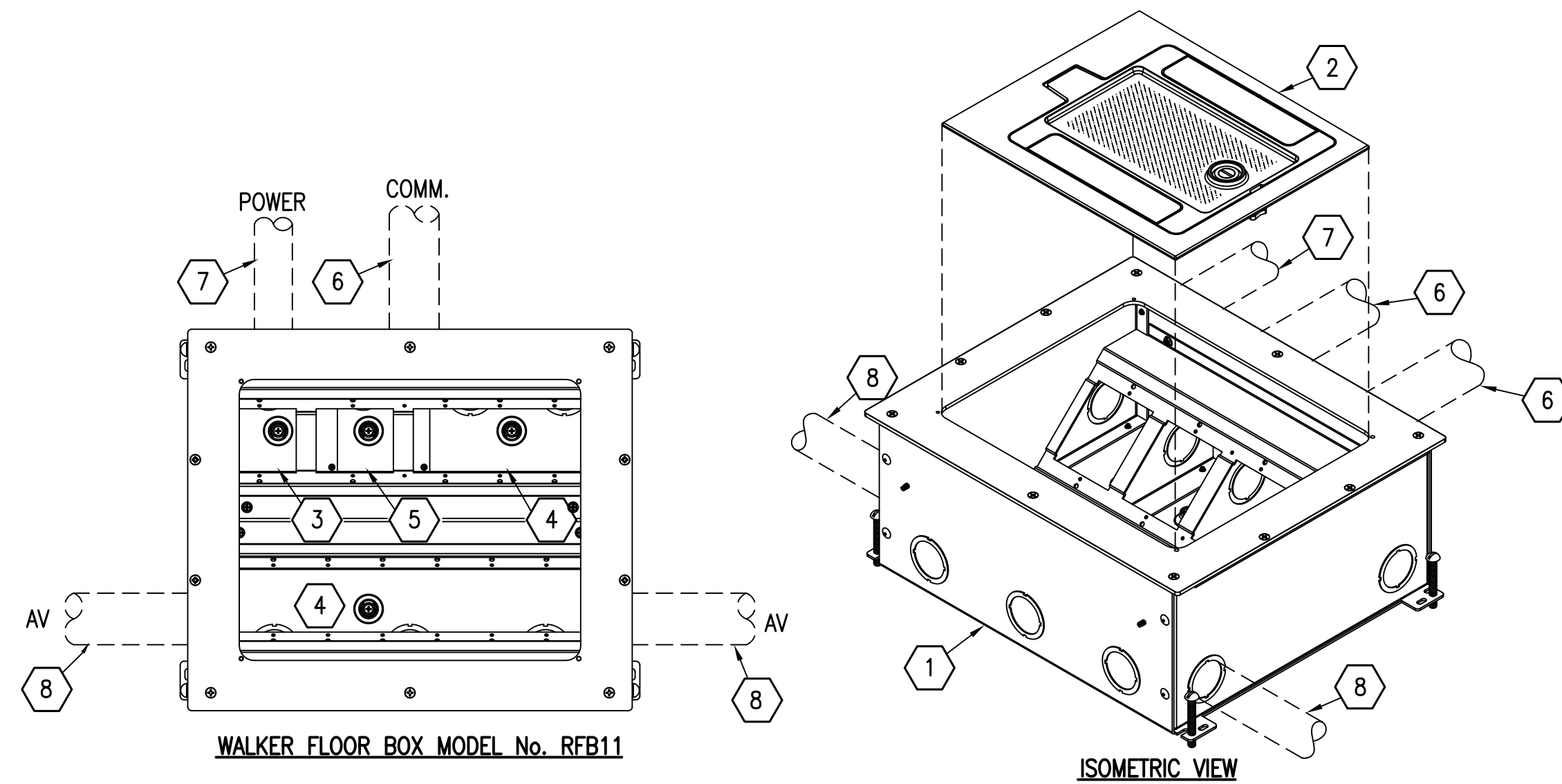
TN503
NOT TO SCALE



NOTE: EACH PA SPEAKER HOMERUN CONDUIT SHALL SERVE A MAXIMUM OF FOUR SPEAKERS OF ANY TYPE.

3 TYPICAL PA SPEAKER ROUGH-IN DETAIL

TN503
NOT TO SCALE



WALKER FLOOR BOX MODEL No. RFB11

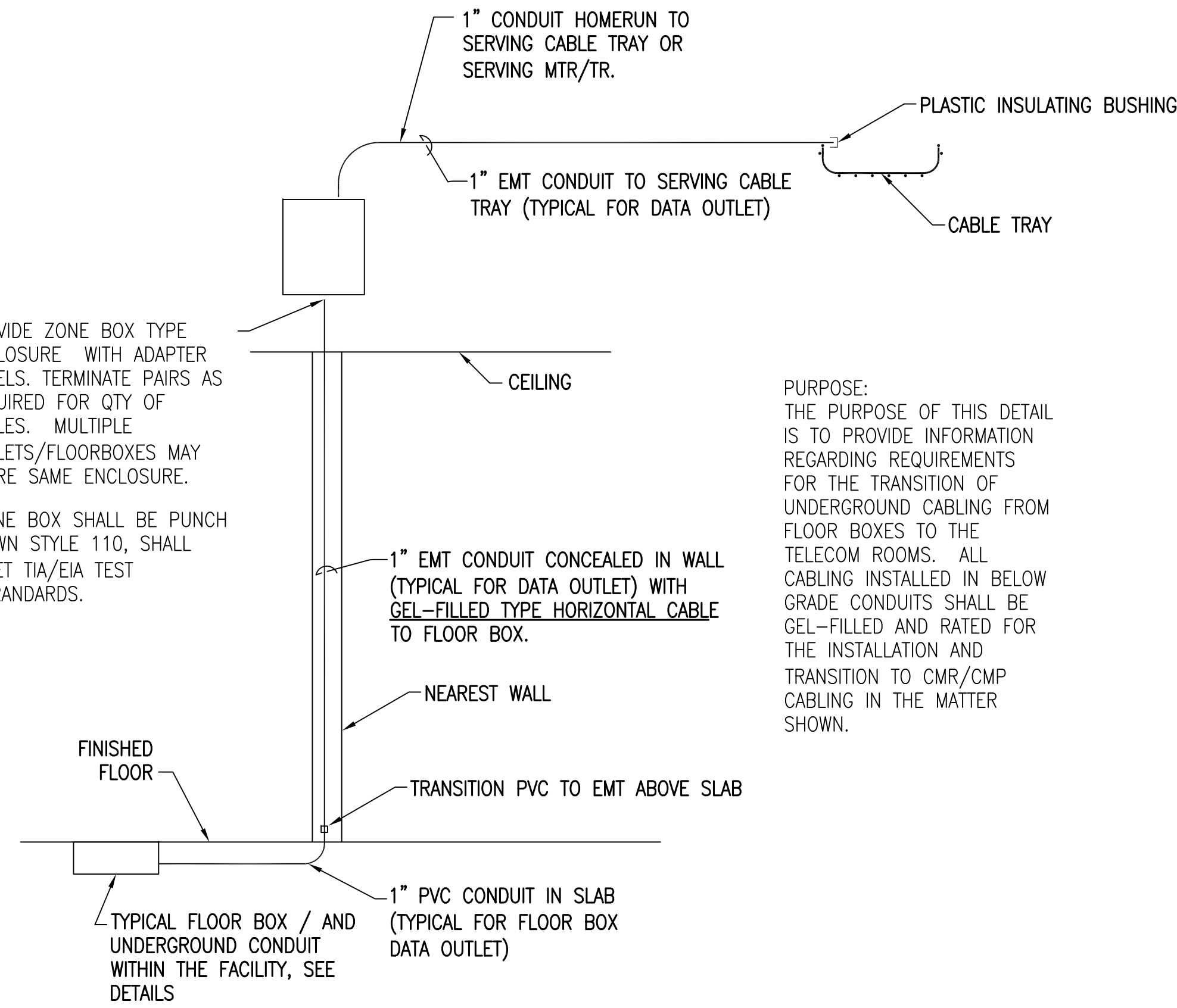
FLOOR BOX KEY NOTES

- 1 BY ELECTRICAL CONTRACTOR: MULTI-SERVICE MULTIMEDIA FLOORBOX, WALKER INFLOOR SYSTEMS RFB11 RECESSED FLOOR BOX. INSTALL FLOOR BOX IN STRICT ACCORDANCE WITH THE MANUFACTURER'S PRINTED INSTRUCTIONS AND AS FOLLOWS: ASSEMBLE BOX. SEAL SIDE AND BOTTOM SEAMS BETWEEN BOX SECTIONS WITH DUCT TAPE CONCRETE TIGHT. SET BOX ON TOP OF VAPOR BARRIER AND LEVEL. SET BOX HEIGHT TO BE FLUSH WITH SLAB.
- 2 BY ELECTRICAL CONTRACTOR: WALKER FLANGED ACTIVATION KIT RFB119CTCAL WITH DIE CAST ALUMINUM TRIM RING, DIE CAST WITH TEXTURED ALUMINUM COATED FINISH AND FLOORING INSERT AREAS FOR CARPET INSERTS.
- 3 BY ELECTRICAL CONTRACTOR: STANDARD DUPLEX RECEPTACLE PLATE WITH (2) 120 VAC OUTLET RECEPTACLES. SEE ELECTRICAL PLANS FOR CIRCUITING REQUIREMENTS.
- 4 BY ELECTRICAL CONTRACTOR: PROVIDE BLANK COVER PLATE FOR A/V CONNECTION (WHEN REQUIRED).
- 5 BY STRUCTURED CABLING SYSTEM CONTRACTOR: PROVIDE COMMUNICATIONS OUTLET COUPLERS & JACKS AS REQUIRED. REFER TO FLOOR PLANS FOR COMMUNICATION OUTLET TYPES.
- 6 BY ELECTRICAL CONTRACTOR: 1" COMMUNICATIONS SYSTEMS CONDUIT, RUN SCHEDULE 40 PVC (BELOW SLAB) TO NEAREST WALL, CONVERT TO EMT AT 4" ABOVE SLAB, AND EXTEND TO CABLE TRAY.
- 7 BY ELECTRICAL CONTRACTOR: POWER CONDUIT WITH WATERTIGHT FITTINGS, SEE ELECTRICAL DRAWINGS AND SPECIFICATIONS.
- 8 BY ELECTRICAL CONTRACTOR: (FOR A/V SYSTEMS BY OTHERS) 1-1/2" CONDUIT (OR AS NOTED ON DRAWING) RUN SCHEDULE 40 PVC (BELOW SLAB) TO NEAREST WALL, CONVERT TO EMT AT 4" ABOVE SLAB, AND STUB TO ABOVE CEILING UNLESS NOTED OTHERWISE, SEE FLOOR PLAN FOR QUANTITY AND ROUTING REQUIREMENTS.

4 TYPICAL MULTIMEDIA FLOOR BOX DETAIL

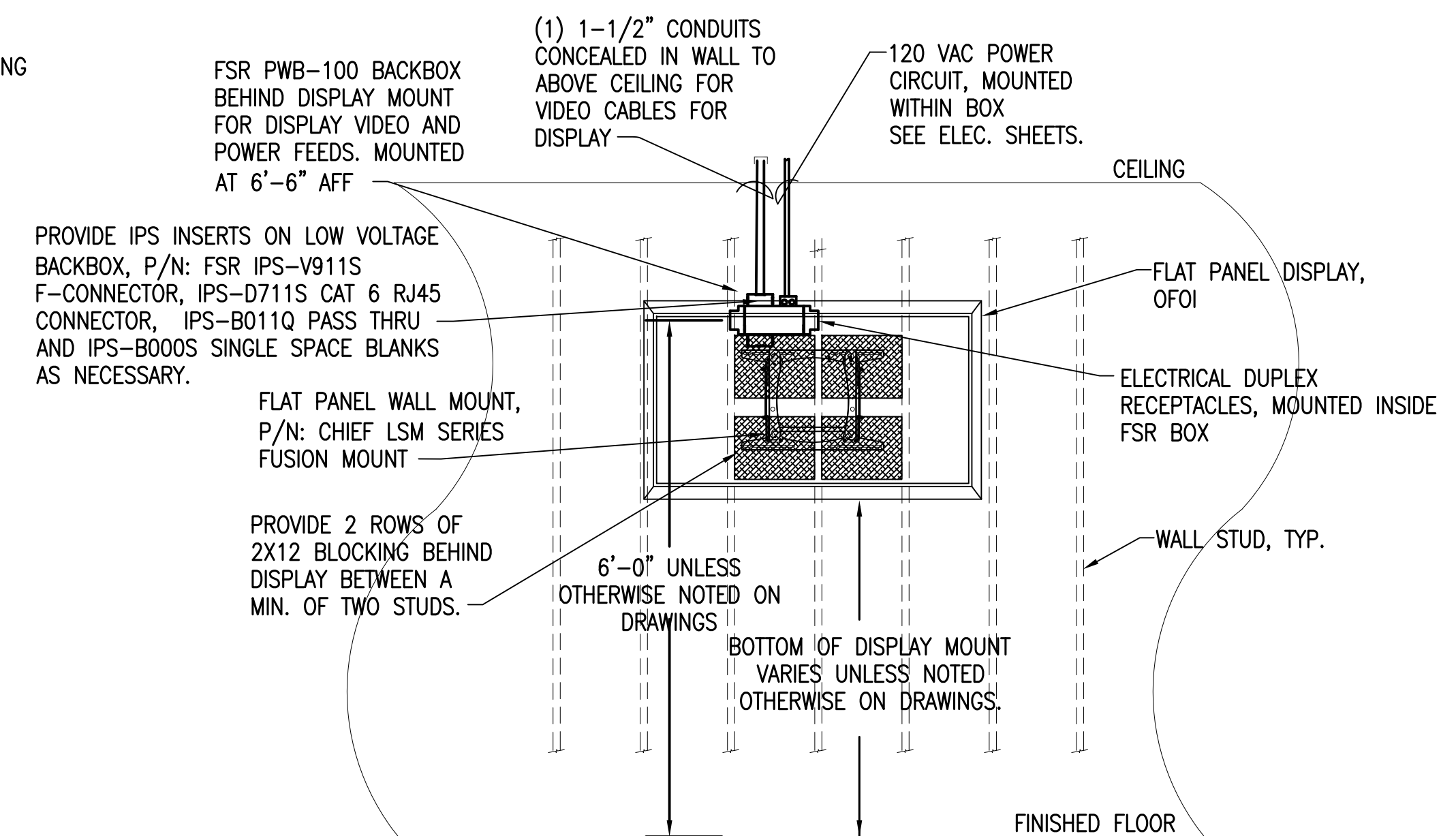
TN503
NOT TO SCALE

FB



5 UNDERGROUND CABLE TRANSITION DETAIL

TN503
NOT TO SCALE



6 FLAT PANEL DISPLAY MONITOR AND CONDUIT ROUGH-IN DETAIL

TN503
NOT TO SCALE

-FP

CONSULTANTS: CIVIL: KENNETH HORNE & ASSOCIATES 7201 NORTH 9TH AVENUE PENSACOLA, FLORIDA 32504 PH (850) 471-2000 FX (850) 471-0095 LANDSCAPE ARCHITECT: GSA GROUP, INC. 6900 PICCADILLY SQUARE DRIVE MOBILE, ALABAMA 36609 PH (251) 544-4023 FX (251) 544-4022		CONTRACTOR: SCHMIDT CONSULTING GROUP, INC. 40 S. PALAFOX PLACE, STE. 300 PENSACOLA, FLORIDA 32502 PH (850) 438-0050 FX (850) 432-9551 ARCHITECTURE: BULLOCK TOBE ASSOCIATES, INC. 809 EAST CERVANTES STREET PENSACOLA, FL 32501 PH (850) 438-0444 FX (850) 432-8208		SUPERVISOR: RGT TECHNOLOGIES, INC. 10401 HIGHLAND MANOR DRIVE, SUITE 120 TAMPA, FLORIDA 33610 PH (813) 740-2300		ARCHITECT/ENGINEERS: BES DESIGN/BUILD, LLC 766 Middle St, Fairhope, AL 36532 Phone: 251.990.5778 Fax: 251.990.3716		Drawing Title: TELECOMMUNICATIONS DETAILS		Project Title: PANAMA CITY JOINT OUTPATIENT CLINIC VA GULF COAST HEALTH CARE		Project Number: 520-326 Building Number: -		Office of Construction and Facilities Management 	
Approved Project Director:		Location: PANAMA CITY, FLORIDA		Date: MARCH 2012		Checked: TAN		Drawn: CEC		Dwg Number: TN503 Dwg 7 of 14		FINAL SUBMISSION			