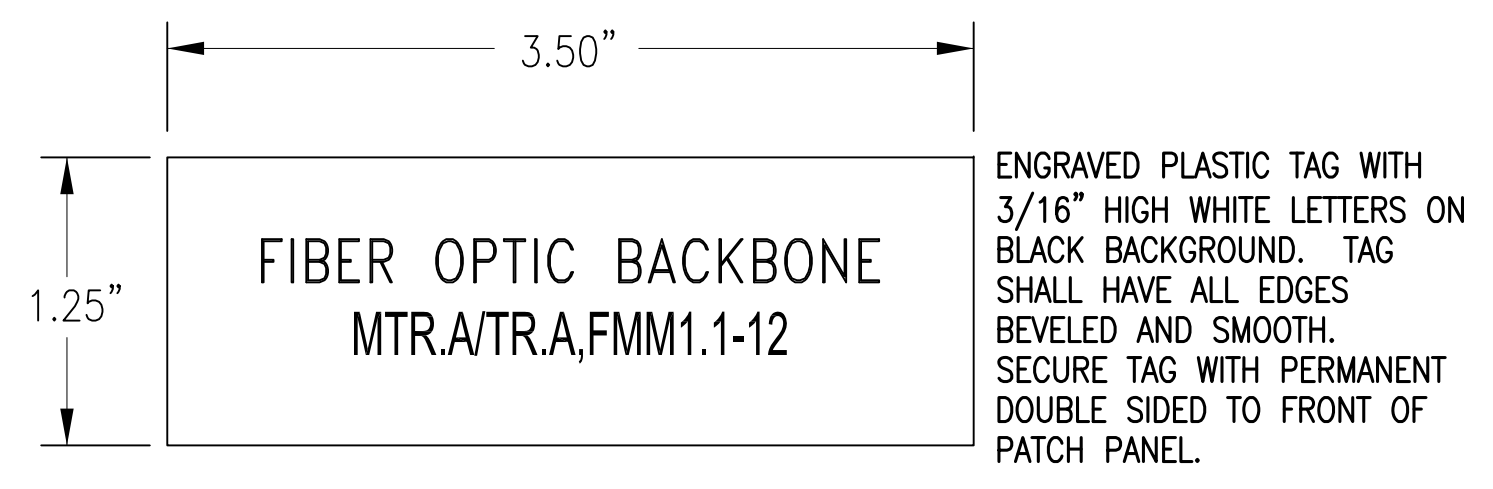
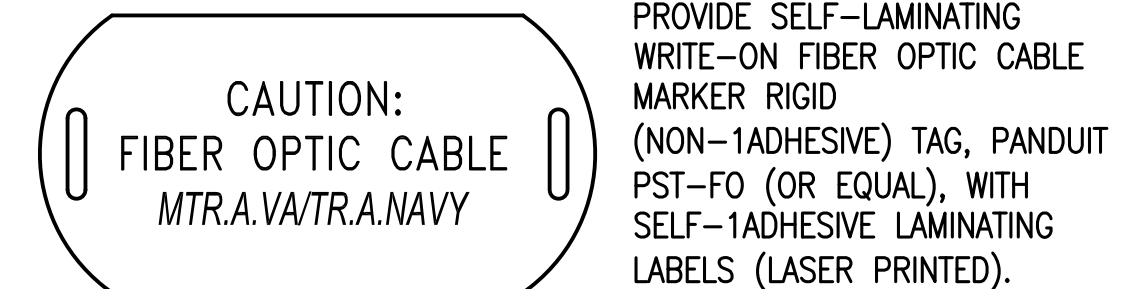


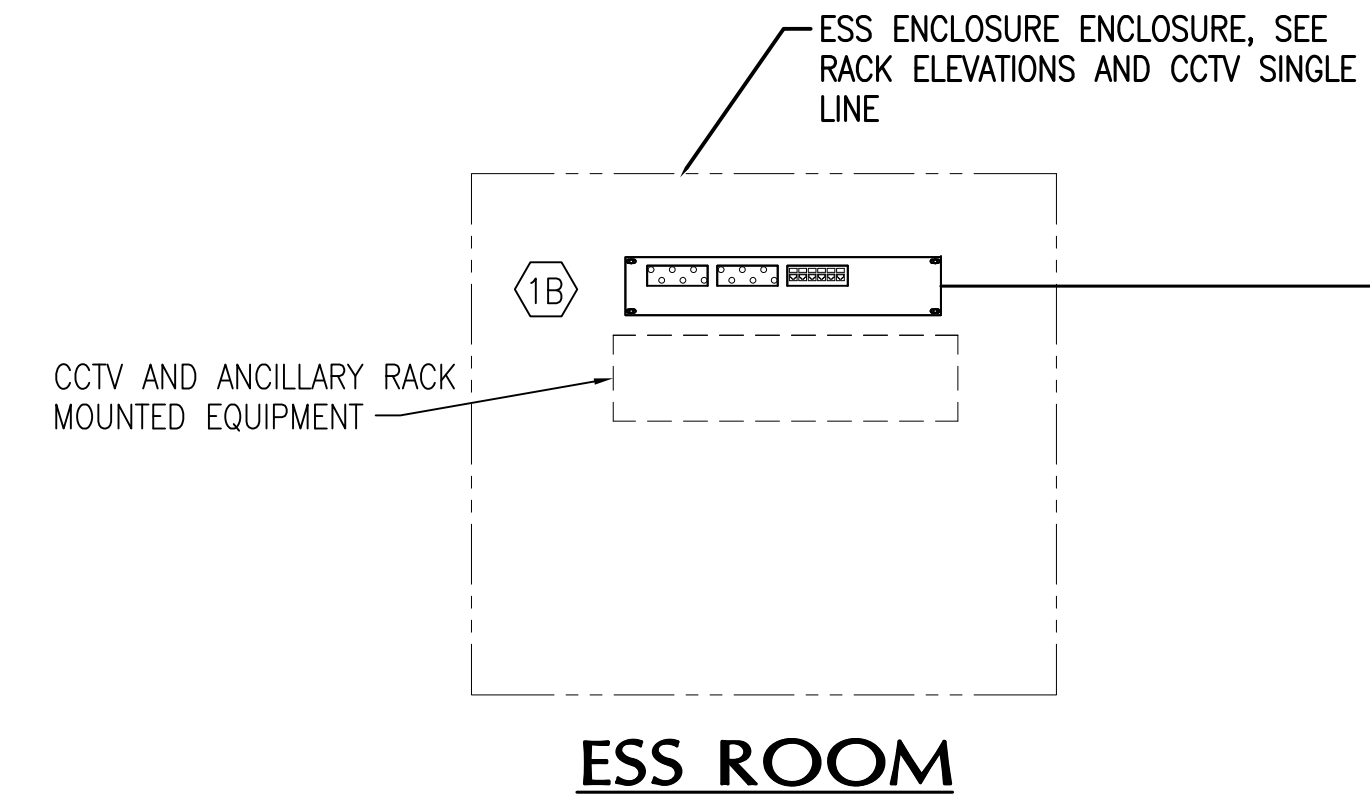
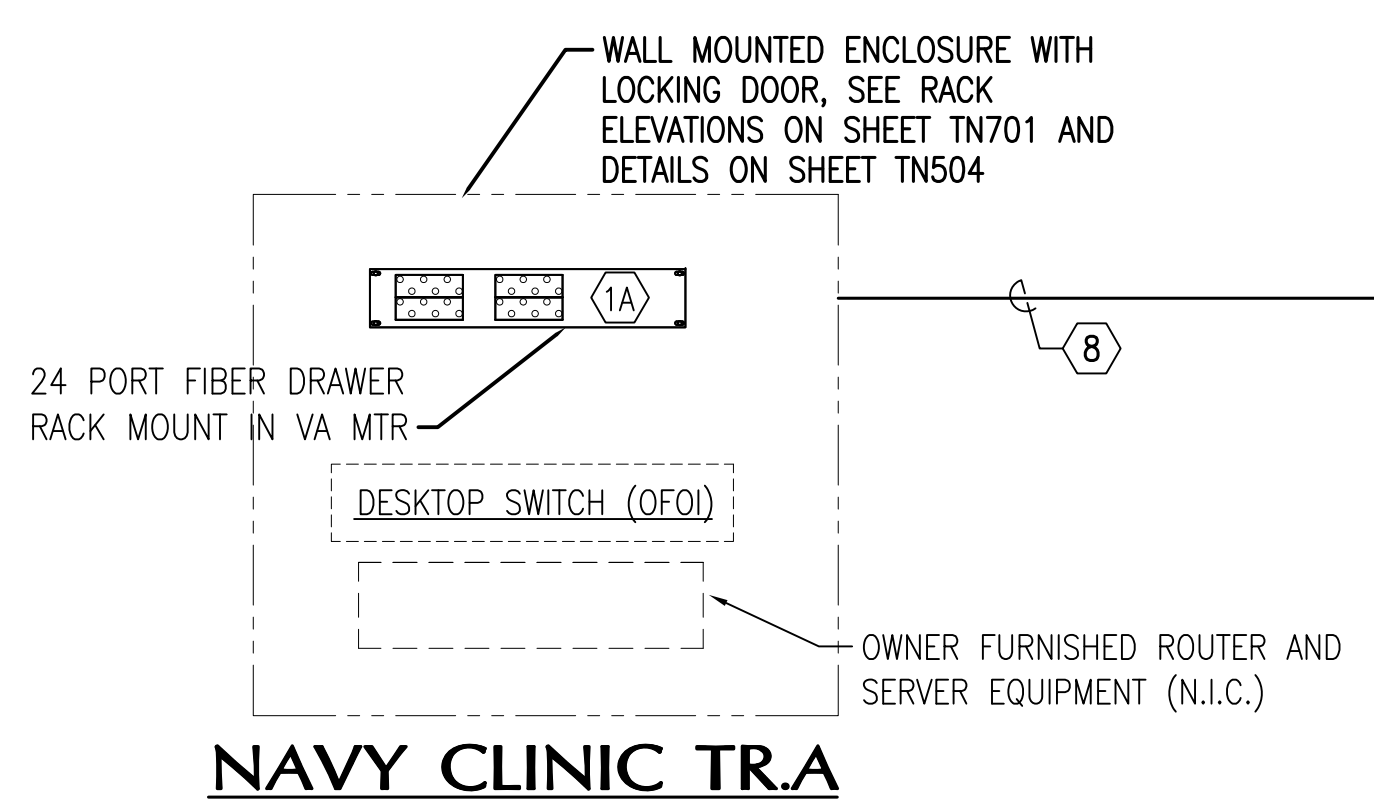
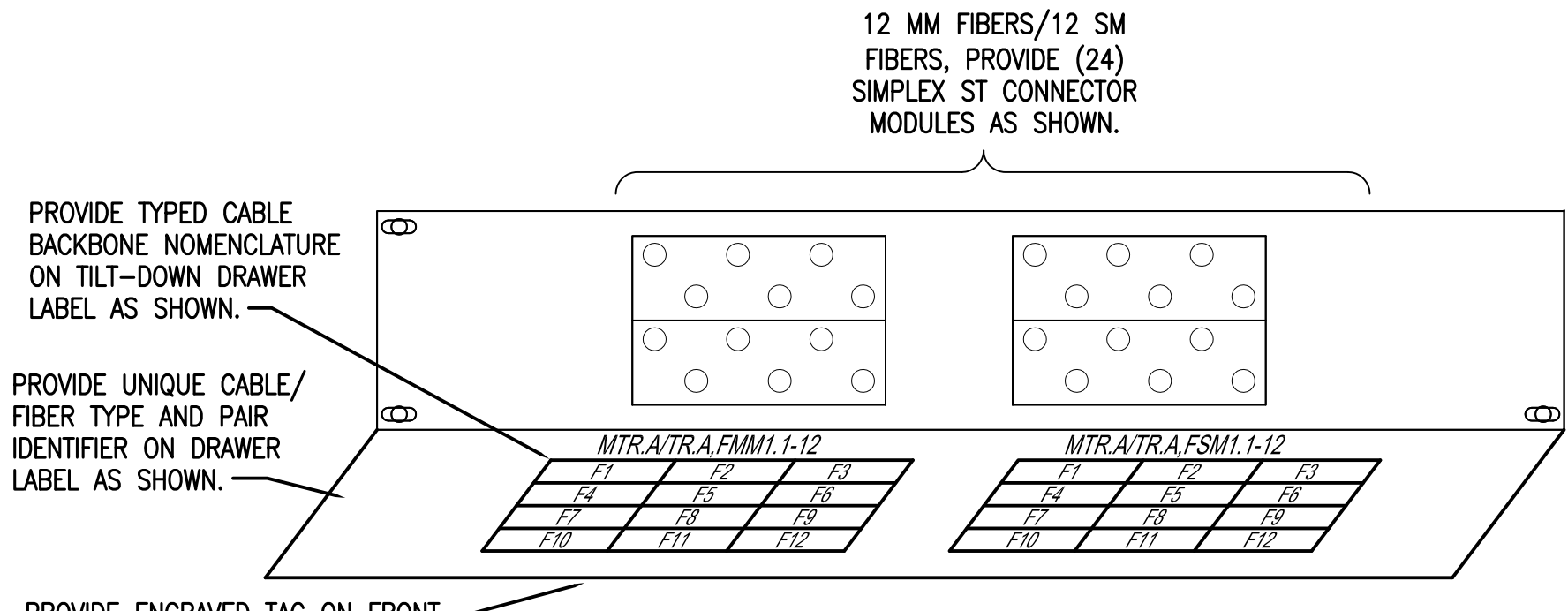
three inches = one foot
one and one half inches = one foot
one inch = one foot
one inch = one foot
three quarters inch = one foot
one half inch = one foot
one half inch = one foot
one eighth inch = one foot
one eighth inch = one foot
one eighth inch = one foot
one eighth inch = one foot



TYPICAL DATA PATCH PANEL ENGRAVED TAG DETAIL

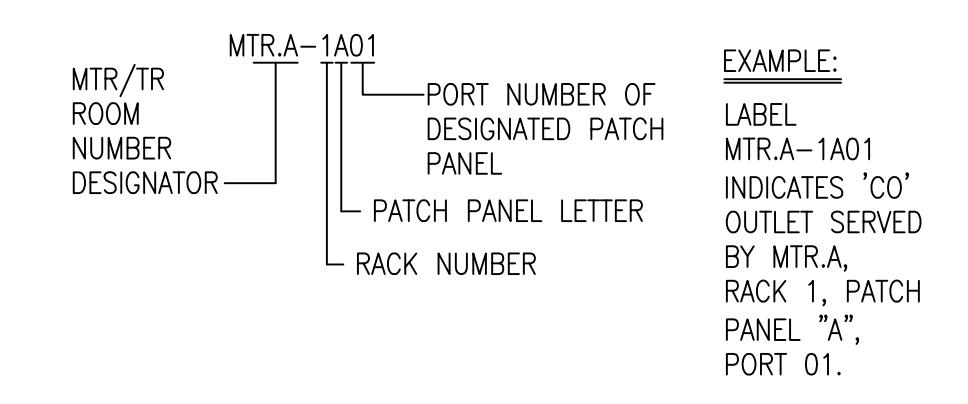


TYPICAL FIBER OPTIC BACKBONE CABLE TAG DETAIL

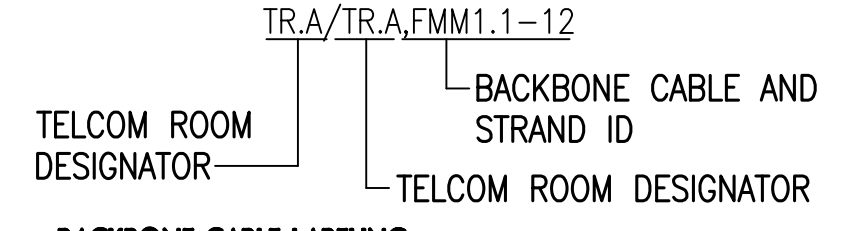


DATA SYSTEM SINGLE LINE DIAGRAM

TIA/EIA 606A IDENTIFICATION NOMENCLATURE



FIBER OPTIC BACKBONE NOMENCLATURE



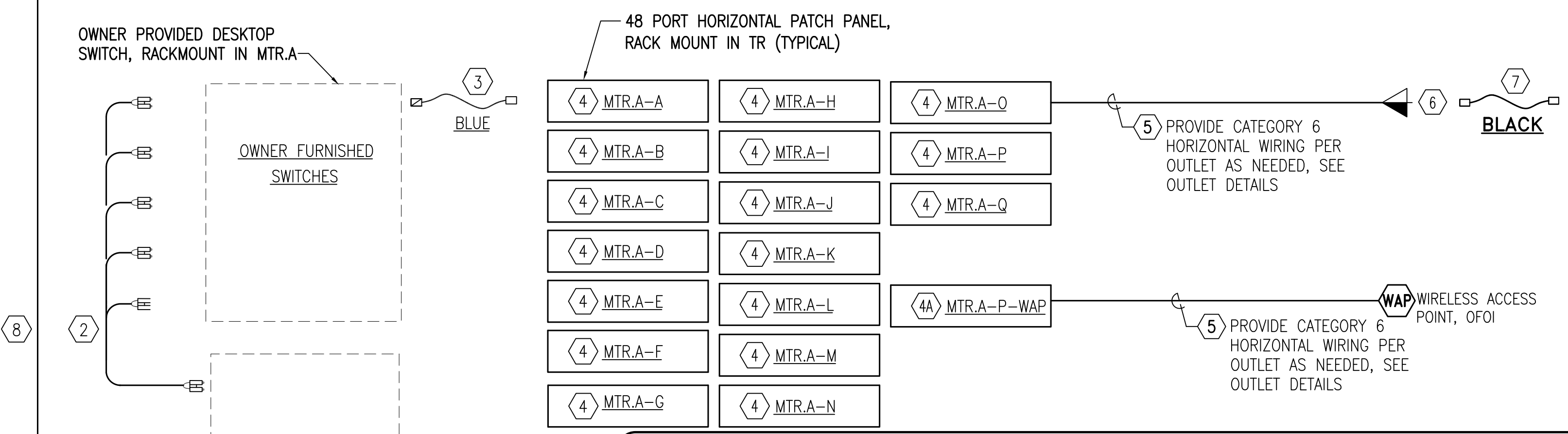
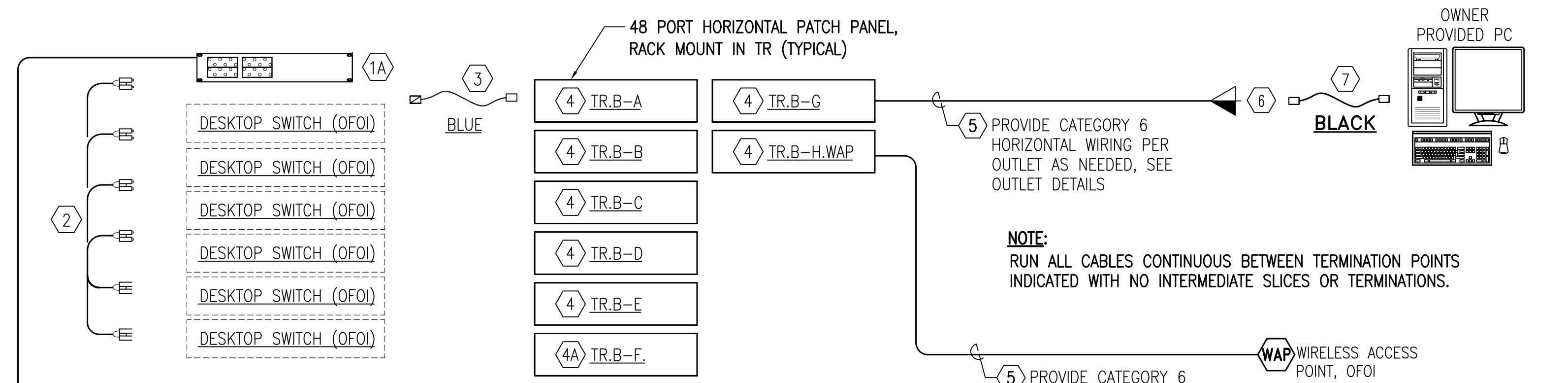
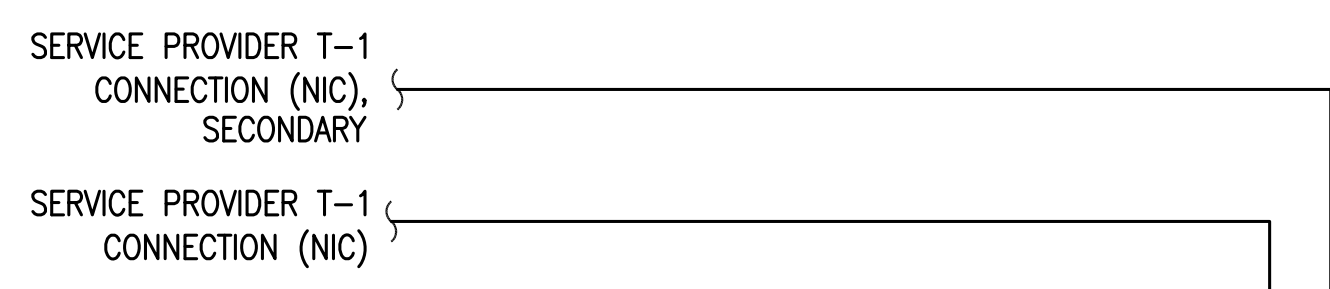
BACKBONE CABLE LABELING

LABEL ALL BACKBONE CABLES WITHIN 12" OF CABLE BREAKOUT POINT WITH PERMANENT MYLAR WRAP WRITE-ON MARKERS.

NAME FORMULA = BUILDING NUMBER - ROOM NUMBER/ BUILDING NUMBER - ROOM NUMBER, CABLE TYPE (FMM = FIBER MULTIMODE, FSM = FIBER SINGLE MODE, CAT6 = CATEGORY 6 COPPER), CABLE IDENTIFIER # (EACH PANEL WILL CONTAIN A SPREADSHEET DETAILING WHAT STRAND OF CABLE CONNECTS TO WHAT PORT NUMBER AND WHICH COLOR).

PORT NUMBERS WILL BE READ FROM TOP TO BOTTOM OR LEFT TO RIGHT, DEPENDING ON MODULE ORIENTATION.

COLOR SEQUENCE: BLUE=1, ORANGE=2, GREEN=3, BROWN=4, SLATE=5, WHITE=6, RED=7, BLACK=8, YELLOW=9, VIOLET=10, ROSE=11, AQUA=12.



DATA SINGLE LINE KEY NOTES

- FIBER DRAWER 48 PORT, RACK MOUNT. PROVIDE WITH 12 PORT SIMPLEX MULT-MODE OM3 "ST" FIBER ADAPTER PLATES, 12 PORT SIMPLX SINGLE-MODE FIBER OPTIC ADAPTER PANEL. IDENTIFY EACH SIMPLEX "ST" ADAPTER WITH A COLORED BLANK TABS (BLACK, WHITE, RED, BLACK, BLUE, GREEN, VIOLET, ORANGE, BROWN, GREY, IVORY, CLEAR). PROVIDE MATCHING COLOR BLANK TABS AT OPPOSITE END TERMINATIONS TO IDENTIFY FIBER PAIRS. LABEL FRONT COVER TO INDICATE SOURCE (TR) AND EACH DESTINATION(S). SEE "FIBER OPTIC BACKBONE NOMENCLATURE".
- FIBER DRAWER, 24 PORT, RACK MOUNT. PROVIDE WITH 12 PORT MULTI-MODE OM3 SIMPLEX "ST" FIBER ADAPTER PLATES AND 12 PORT SINGLE MODE SIMPLEX "ST" FIBER ADAPTER PLATES, AS REQUIRED. IDENTIFY EACH SIMPLEX "ST" ADAPTER WITH A COLORED BLANK TABS (BLACK, WHITE, RED, BLACK, BLUE, GREEN, VIOLET, ORANGE, BROWN, GREY, IVORY, CLEAR). PROVIDE MATCHING COLOR BLANK TABS AT OPPOSITE END TERMINATIONS TO IDENTIFY FIBER PAIRS. LABEL FRONT COVER TO INDICATE SOURCE (TR) AND EACH DESTINATION(S). SEE "FIBER OPTIC BACKBONE NOMENCLATURE".
- FIBER DRAWER, 12 PORT, RACK MOUNT. PROVIDE WITH 12 PORT MULTI-MODE OM3 SIMPLEX "ST" FIBER ADAPTER PLATES AND 6 PORT CAT 6 ADAPTER PLATES AS REQUIRED. IDENTIFY EACH SIMPLEX "ST" ADAPTER WITH A COLORED BLANK TABS (BLACK, WHITE, RED, BLACK, BLUE, GREEN, VIOLET, ORANGE, BROWN, GREY, IVORY, CLEAR). PROVIDE MATCHING COLOR BLANK TABS AT OPPOSITE END TERMINATIONS TO IDENTIFY FIBER PAIRS. LABEL FRONT COVER TO INDICATE SOURCE (TR) AND EACH DESTINATION(S). SEE "FIBER OPTIC BACKBONE NOMENCLATURE".
- FIBER OPTIC PATCH CORD, DUAL FIBER, FDDI GRADE MULTIMODE, DUAL COORDINATE WITH VA FOR CONNECTORS EACH END, COLOR AQUA. FIBER PATCH CORDS OFOI.
- FIBER OPTIC PATCH CORD, DUAL FIBER, FDDI GRADE SINGLE MODE, COORDINATE WITH VA FOR CONNECTORS BOTH ENDS, COLOR YELLOW. FIBER PATCH CORDS OFOI.
- EQUIPMENT ROOM DATA PATCH CORDS, FACTORY TERMINATED AND TESTED CATEGORY 6 (MINIMUM) FOUR PAIR 100-OHM UNSHIELDED TWISTED PAIR (UTP) CABLE WITH 24 GAUGE STRANDED COPPER CONDUCTORS, COLOR BLUE. PROVIDE WITH 8-PIN MODULAR PLUG ON BOTH ENDS AND TIA 568A PIN/PAIR ASSIGNMENTS WITH NO BOOT. FIELD BUILT OR ASSEMBLED PATCH CORDS WILL NOT BE ACCEPTED. PROVIDE PATCH CORD QUANTITIES AND LENGTHS AS SCHEDULED THIS SHEET. PROVIDE DOCUMENTATION OF FACTORY TESTING CATEGORY 6 REQUIREMENTS AT SUBMITTAL.
- TIA CATEGORY 6 HORIZONTAL WIRING ANGLED PATCH PANEL, 48 PORT, TIA 568A PINOUT. PROVIDE WITH FACTORY ICON/LABEL HOLDERS, DESIGNATION LABELS, REAR CABLE MANAGERS, AND MOUNTING HARDWARE. PROVIDE COLORED SNAP-IN BLANK TAB FOR EACH MODULAR JACK, COLOR TO MATCH CORRESPONDING JACK IN CO. SEE "HORIZONTAL PATCH PANEL LABELING NOTES" FOR TERMINATION SEQUENCE, ROW LABELING, AND IDENTIFICATION TAG.
- TIA CATEGORY 6 HORIZONTAL WIRING ANGLED PATCH PANEL FOR WIRELESS ACCESS POINTS, 24 PORT, TIA 568A PINOUT. PROVIDE WITH FACTORY ICON/LABEL HOLDERS, DESIGNATION LABELS, REAR CABLE MANAGERS, AND MOUNTING HARDWARE. PROVIDE COLORED SNAP-IN BLANK TAB FOR EACH MODULAR JACK, COLOR TO MATCH CORRESPONDING JACK IN CO. SEE "HORIZONTAL PATCH PANEL LABELING NOTES" FOR TERMINATION SEQUENCE, ROW LABELING, AND IDENTIFICATION TAG.
- TIA CATEGORY 6 HORIZONTAL WIRING, 4 PAIR UTP, 24 GAUGE SOLID COPPER CONDUCTORS, CMR, COLOR BLUE. MAXIMUM INSTALLED LENGTH 90 METERS (295').
- TYPICAL COMMUNICATIONS OUTLET (CO) WITH CATEGORY 6 8-PIN MODULAR JACKS FOR DATA AND VOICE CONNECTIONS. SEE OUTLET DETAILS.
- WORKSTATION PATCH CORDS, FACTORY TERMINATED AND TESTED CATEGORY 6 (MINIMUM) FOUR PAIR 100-OHM UNSHIELDED TWISTED PAIR (UTP) CABLE WITH 24 GAUGE STRANDED COPPER CONDUCTORS, COLOR BLACK. PROVIDE WITH 8-PIN MODULAR PLUG ON BOTH ENDS AND TIA 568A PIN/PAIR ASSIGNMENTS WITH NO BOOT. FIELD BUILT OR ASSEMBLED PATCH CORDS WILL NOT BE ACCEPTED. PROVIDE PATCH CORD QUANTITIES AND LENGTHS AS SCHEDULED THIS SHEET. PROVIDE DOCUMENTATION OF FACTORY TESTING CATEGORY 6 REQUIREMENTS AT SUBMITTAL.
- FIBER OPTIC CABLE, INDOOR/OUTDOOR, 12 FIBER COUNT, 50u 10GIG MULTIMODE AND 12 FIBER COUNT SINGLE MODE FIBER. PROVIDE SPIDER FAN-OUT KIT AT BOTH ENDS AND TERMINATE ALL FIBERS WITH "ST" CONNECTORS. AT BOTH ENDS PROVIDE DROP LOOP IN CABLE BEHIND FIBER DRAWER TO ALLOW DRAWER PULL-OUT, AND PROTECT DROP LOOP WITH SPIRAL WRAP. EXTEND CABLE JACKET AND SPIRAL WRAP INTO DRAWER AND SECURE. COIL 24" SLACK BUFFERED FIBER IN DRAWER USING FACTORY HARDWARE. RUN CONTINUOUS FROM SOURCE TO DESTINATION WITH NO SPLICES OR TERMINATIONS.
- FIBER OPTIC CABLE, INDOOR/OUTDOOR, 12 FIBER COUNT, 50u 10GIG MULTIMODE AND (6) CAT 6 CABLES PROVIDE SPIDER FAN-OUT KIT AT BOTH ENDS AND TERMINATE ALL FIBERS WITH "ST" CONNECTORS. AT BOTH ENDS PROVIDE DROP LOOP IN CABLE BEHIND FIBER DRAWER TO ALLOW DRAWER PULL-OUT, AND PROTECT DROP LOOP WITH SPIRAL WRAP. EXTEND CABLE JACKET AND SPIRAL WRAP INTO DRAWER AND SECURE. COIL 24" SLACK BUFFERED FIBER IN DRAWER USING FACTORY HARDWARE. RUN CONTINUOUS FROM SOURCE TO DESTINATION WITH NO SPLICES OR TERMINATIONS.

CONSULTANTS:		ARCHITECT/ENGINEERS:		Drawing Title DATA SINGLE LINE DIAGRAM		Project Title PANAMA CITY JOINT OUTPATIENT CLINIC VA GULF COAST HEALTH CARE		Project Number 520-326		Office of Construction and Facilities Management	
CIVIL: KENNETH HORNE & ASSOCIATES 7201 NORTH 9TH AVENUE PENSACOLA, FLORIDA 32504 PH (850) 471-2008 FX (850) 471-2008		SURVEYING: KCI TECHNOLOGIES, INC. 10401 HIGHLAND MANOR DRIVE, SUITE 100 TAMPA, FLORIDA 33610 PH (813) 740-2300 FX (813) 740-2300		Approved Project Director		Location PANAMA CITY, FLORIDA		Drawing Number TN603			
LANDSCAPE ARCHITECT: CSA GROUP, INC. 6900 PICCADILLY SQUARE DRIVE MOBILE, ALABAMA 36609 PH (251) 544-4444 FX (251) 544-4062		ARCHITECTURE: BULLOCK TOE ASSOCIATES, INC. 809 EAST CERVANTES STREET PENSACOLA, FL 32501 PH (850) 432-0444 FX (850) 432-0208		BES DESIGN/BUILD, LLC 766 Middle St, Fairhope, AL 36532 Phone: 251.990.5778 Fax: 251.990.3716		Date MARCH 2012		Checked TAN			
Revisions:		Date								Dwg 11 of 14	

