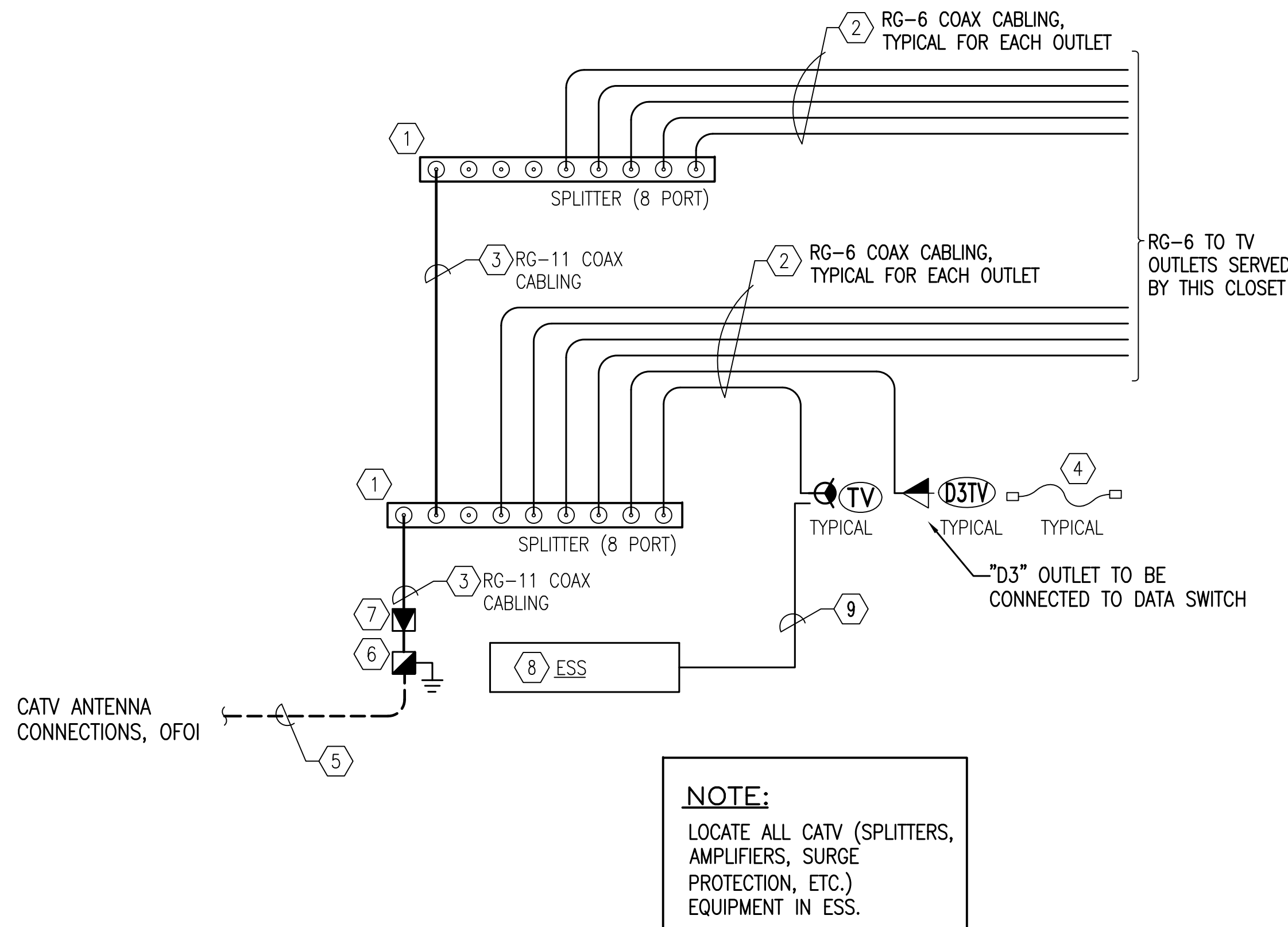


three inches = one foot
one and one half inches = one foot
one inch = one foot
one inch = one foot
three quarters inch = one foot
one half inch = one foot
one half inch = one foot
three eighths inch = one foot
one quarter inch = one foot
one eighth inch = one foot
one eighth inch = one foot

TV SYSTEM KEY NOTES

- PROFESSIONAL GRADE SPLITTER, 8 OUTPUT, 1000 mhz. MOUNT ON BACKBOARD.
- RG-6 COAX TV CABLE, RUN CONTINUOUS WITH NO SPLICES OR COUPLERS.
- RG-11 COAX TV CABLE, RUN CONTINUOUS WITH NO SPLICES OR COUPLERS.
- PROFESSIONAL GRADE FACTORY JUMPERS, RG-6 COAX WITH CRIMP-ON SCREW CONNECTORS, QUANTITY EQUAL TO NUMBERS OF TV OUTLETS PLUS 25% SPARE, LENGTH AS REQUIRED.
- INCOMING CATV SERVICE TIE-IN., COORDINATE FEED REQUIREMENTS WITH OWNER.
- SURGE PROTECTOR, 750, 0-1000mhz, 750V @ 10kV/uS, MOUNT ON BACKBOARD AND ROUTE #6 GROUND TO GROUNDING BUSBAR.
- DISTRIBUTION AMPLIFIER, VARIABLE GAIN/SLOPE 1000 MHZ, MOUNT ON BACKBOARD IN ESS.
- TIA CATEGORY 6 HORIZONTAL WIRING ANGLED PATCH PANEL, 24 PORT, TIA 568A PINOUT. PROVIDE WITH FACTORY ICON/LABEL HOLDERS, DESIGNATION LABELS, REAR CABLE MANAGERS, AND MOUNTING HARDWARE. PROVIDE COLORED SNAP-IN BLANK TAB FOR EACH MODULAR JACK, COLOR TO MATCH CORRESPONDING JACK IN CO. SEE "HORIZONTAL PATCH PANEL LABELING NOTES" FOR TERMINATION SEQUENCE, ROW LABELING, AND IDENTIFICATION TAG.
- TIA CATEGORY 6 HORIZONTAL WIRING, 4 PAIR UTP, 24 GAUGE SOLID COPPER CONDUCTORS, CMR, COLOR BLACK. MAXIMUM INSTALLED LENGTH 90 METERS (295').



ELECTRICAL SYSTEMS ROOM 21

1 TV SYSTEM SINGLE LINE DIAGRAM
NOT TO SCALE

- VOLUME CONTROL KNOB ZONE 1
- VOLUME CONTROL KNOB ZONE 2
- VOLUME CONTROL KNOB ZONE 3
- VOLUME CONTROL KNOB ZONE 4

GROUNDING GENERAL NOTES:

- GROUND EACH AMPLIFIER TO COMMON GROUND.
- GROUND SHIELDED CABLE DRAIN WIRES PER MANUFACTURER'S REQUIREMENTS.

PAGING SPEAKER TESTING, TUNING, AND ZONING NOTE

ZONE SPEAKERS AS REQUIRED AS DIRECTED BY THE OWNERS REPRESENTATIVE. PRIOR TO FINALIZING INSTALLATION, CONTACT THE OWNER AND SCHEDULE A COORDINATION MEETING AT THE SITE TO PROVIDE SPECIFIC AND FINAL DIRECTIONS FOR ZONING.

THE CONTRACTOR SHALL, ALONG WITH THE OWNER, TUNE AND BALANCE THE SYSTEM BY SETTING THE VOLUME ON EACH SPEAKER AND VERIFYING THE SOUND QUALITY AT EACH SPEAKER TO THE SATISFACTION OF THE OWNER'S DESIGNATED REPRESENTATIVE.

CONNECT TO FIRE ALARM SYSTEM FOR PAGING SYSTEM OVERRIDE.

FROM ANALOG/ TRUNK PORT ON PBX, COORDINATE WITH TELEPHONE/PBX CONTRACTOR

TELEPHONE ACCESS MODULE

DIGITAL FEEDBACK TERMINATOR

CONNECTION TO OFOI MUSIC PLAYER SYSTEM

MULTI-ZONE PAGING SYSTEM BOGEN, TOA, BIAMP, OR APPROVED EQUAL. CAPABLE OF A MIN. OF 4 ZONES WITH VOLUME CONTROLS WITH MUSIC OVERRIDE FOR PAGING. SYSTEM SHALL HAVE ALL CALL CAPABILITIES.

MTRA

SPEAKER CABLE - 2 CONDUCTOR, 16 A.W.G. SPEAKER CABLE, LENGTH AS REQUIRED, WEST PENN WIRE 225 OR EQUAL, TYPICAL FOR ALL SPEAKERS.

S

INDICATES PAGING ZONED AREA

SPEAKER ZONING NOMENCLATURE

PAGING SYSTEM GENERAL NOTE

THE DIAGRAM IS INTENDED TO SHOW TYPICAL CABLING AND EQUIPMENT REQUIRED TO MEET THE REQUIREMENTS OF THE PAGING/PUBLIC ADDRESS SYSTEM. THIS DIAGRAM SHALL NOT BE CONSTRUED AS BEING COMPLETE. ADDITIONAL EQUIPMENT AND/OR CABLING MAY BE REQUIRED FOR THE SYSTEM TO PERFORM AS SPECIFIED. THE CONTRACTOR SHALL PROVIDE A "TURN-KEY" INSTALLATION AND BE RESPONSIBLE FOR ANY ADDITIONAL CABLES OR EQUIPMENT REQUIRED TO CONSTRUCT A COMPLETE AND FUNCTIONAL SYSTEM. CONTRACTOR SHALL BE RESPONSIBLE FOR FINAL LOCATION, EQUIPMENT, CONDUIT ROUTING, CABLE TYPES, ETC AS REQUIRED TO PROVIDE A COMPLETE AND OPERATIONAL SYSTEM.

FIRST FLOOR

FIRST FLOOR

2 PAGING SYSTEM SINGLE LINE DIAGRAM

CONSULTANTS:

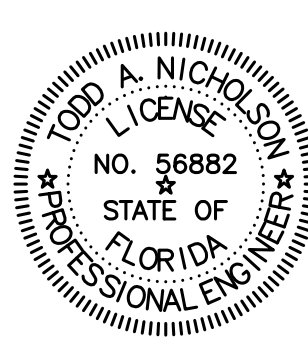
CIVIL
KENNETH HORNE & ASSOCIATES
7201 NORTH 9TH AVENUE
PENSACOLA, FLORIDA 32504
PH (850) 471-2008
FX (850) 471-0085

COMMERCIAL
SCHMIDT CONSULTING GROUP, INC.
40 S. PALAFOX PLACE, STE. 300
PENSACOLA, FLORIDA 32502
PH (850) 438-0050
FX (850) 432-8551

SURVEYING
KCI TECHNOLOGIES, INC.
10401 HIGHLAND MANOR DRIVE, SUITE 120
TAMPA, FLORIDA 33610
PH (813) 740-2300

LANDSCAPE ARCHITECT
CSA GROUP, INC.
6300 PICCADILLY SQUARE DRIVE
MOBILE, ALABAMA 36609
PH (251) 944-4023
FX (251) 944-4022

ARCHITECTURE
BULLOCK TICE ASSOCIATES, INC.
808 EAST CERVANTES STREET
MOBILE, ALABAMA 36601
PH (251) 434-4444
FX (251) 432-2208



ARCHITECT/ENGINEERS:



BES DESIGN/BUILD, LLC
766 Middle St, Fairhope, AL 36532
Phone: 251.990.5778 Fax: 251.990.3716

Drawing Title TV AND PAGING SINGLE LINE DIAGRAM

Approved Project Director

Project Title
PANAMA CITY
JOINT OUTPATIENT CLINIC
VA GULF COAST HEALTH CARE

Location
PANAMA CITY, FLORIDA

Date
MARCH 2012

Checked
TAN

Drawn
CEC

Project Number
520-326

Building Number
-

Drawing Number

TN604
Dwg 12 of 14



FLORIDA LICENSE NUMBER 02071
4015 PARKWAY, SUITE 200, PENSACOLA, FL 32502
PH (850) 438-0051 FX (850) 432-8551
10000 NICHOLSON F.E.
FLORIDA LICENSE NUMBER 34862
SCS PROJECT 2011-144

Office of
Construction
and Facilities
Management



FINAL SUBMISSION