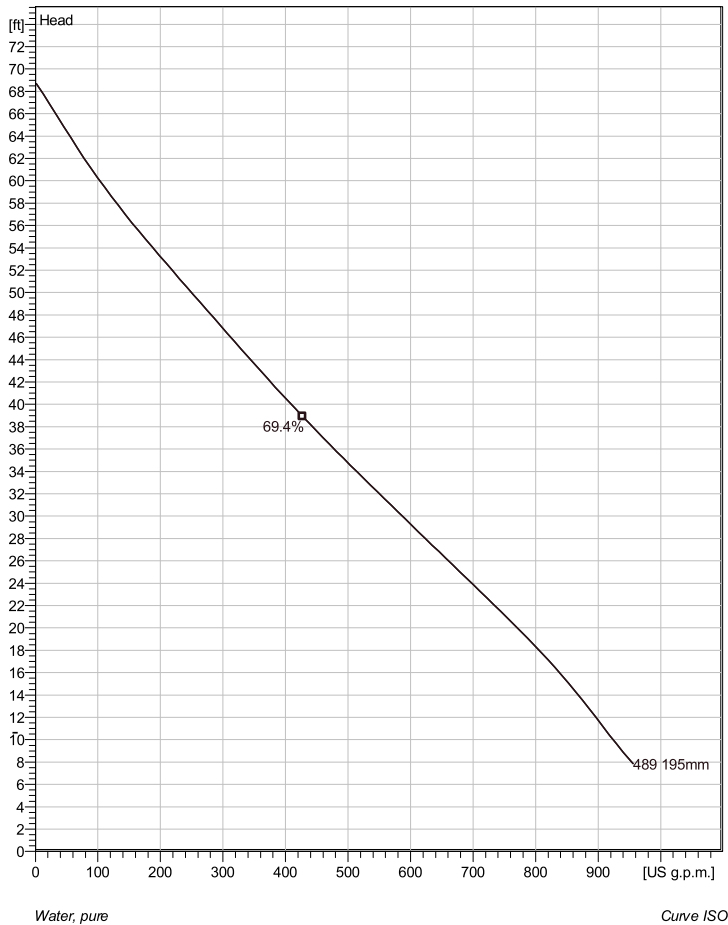


NP 3127 HT 3~ Adaptive 489

Technical specification



Note: Picture might not correspond to the current configuration.

General

Patented self cleaning semi-open channel impeller, ideal for pumping in waste water applications. Possible to be upgraded with Guide-pin® for even better clogging resistance. Modular based design with high adaptation grade.

Impeller

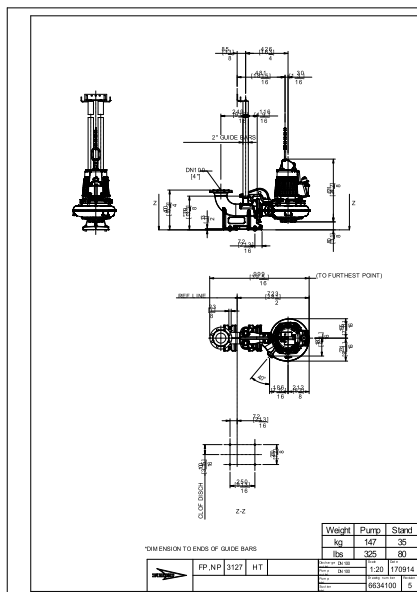
Impeller material	Hard-Iron™
Discharge Flange Diameter	3 15/16 inch
Suction Flange Diameter	3 15/16 inch
Impeller diameter	195 mm
Number of blades	2

Motor

Motor #	N3127.070 21-10-4AL-W 7.5hp
Stator variant	FM
Frequency	12
Rated voltage	60 Hz
Number of poles	460 V
Phases	4
Rated power	3~
Rated current	7.5 hp
Starting current	9.6 A
Rated speed	52 A
Power factor	1740 rpm
1/1 Load	0.88
3/4 Load	0.85
1/2 Load	0.77
Motor efficiency	
1/1 Load	83.8 %
3/4 Load	84.7 %
1/2 Load	83.7 %

Configuration

Installation: P - Semi permanent, Wet



Project	Project ID	Created by	Created on	Last update
			7/14/2018	

NP 3127 HT 3~ Adaptive 489



Performance curve

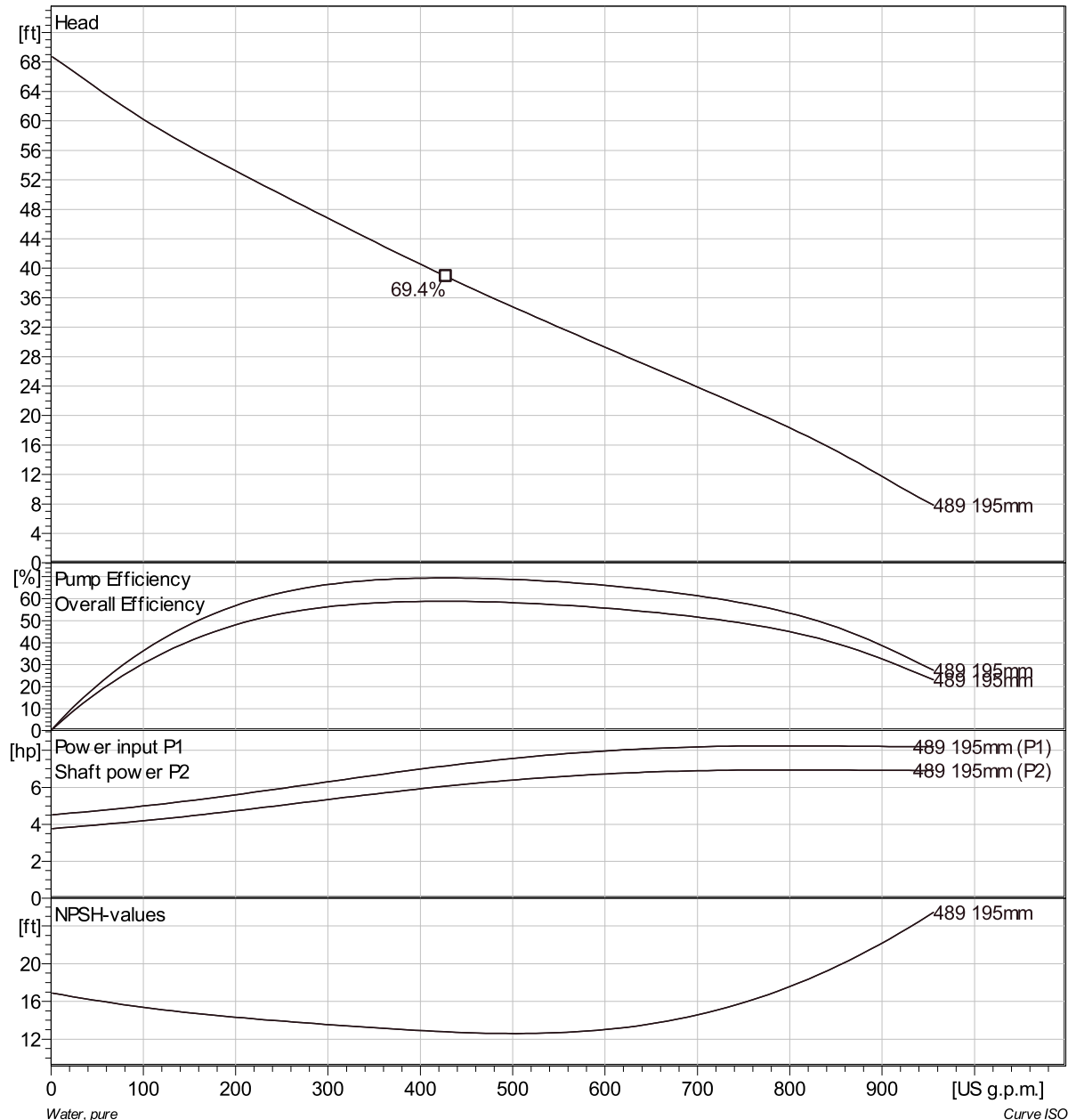
Pump

Discharge Flange Diameter 3 15/16 inch
Suction Flange Diameter 100 mm
Impeller diameter 7 11/16"
Number of blades 2

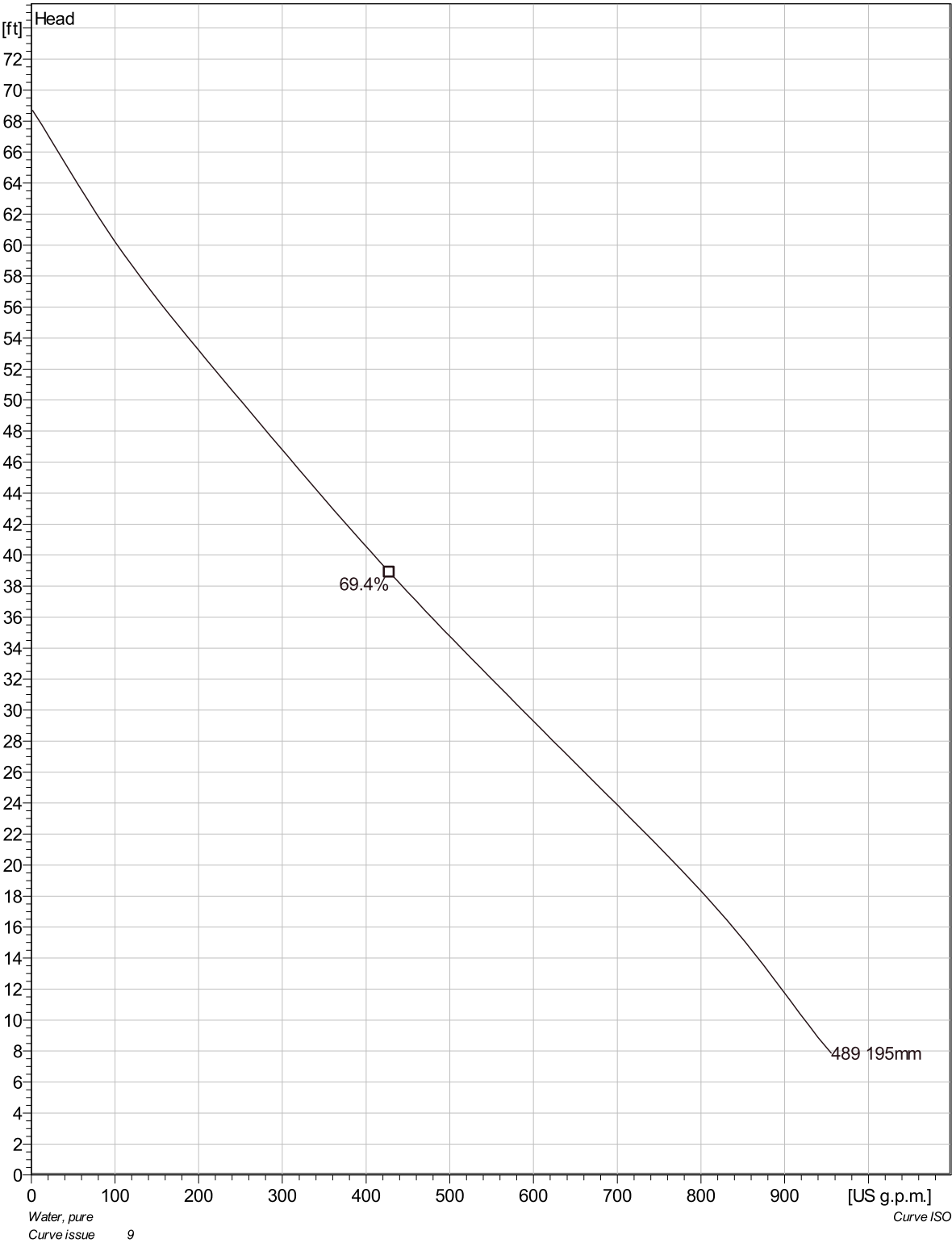
Motor

Motor # N3127.070 21-10-4AL-W 7.5hp
Stator variant 12
Frequency 60 Hz
Rated voltage 460 V
Number of poles 4
Phases 3~
Rated power 7.5 hp
Rated current 9.6 A
Starting current 52 A
Rated speed 1740 rpm

Power factor
1/1 Load 0.88
3/4 Load 0.85
1/2 Load 0.77
Motor efficiency
1/1 Load 83.8 %
3/4 Load 84.7 %
1/2 Load 83.7 %

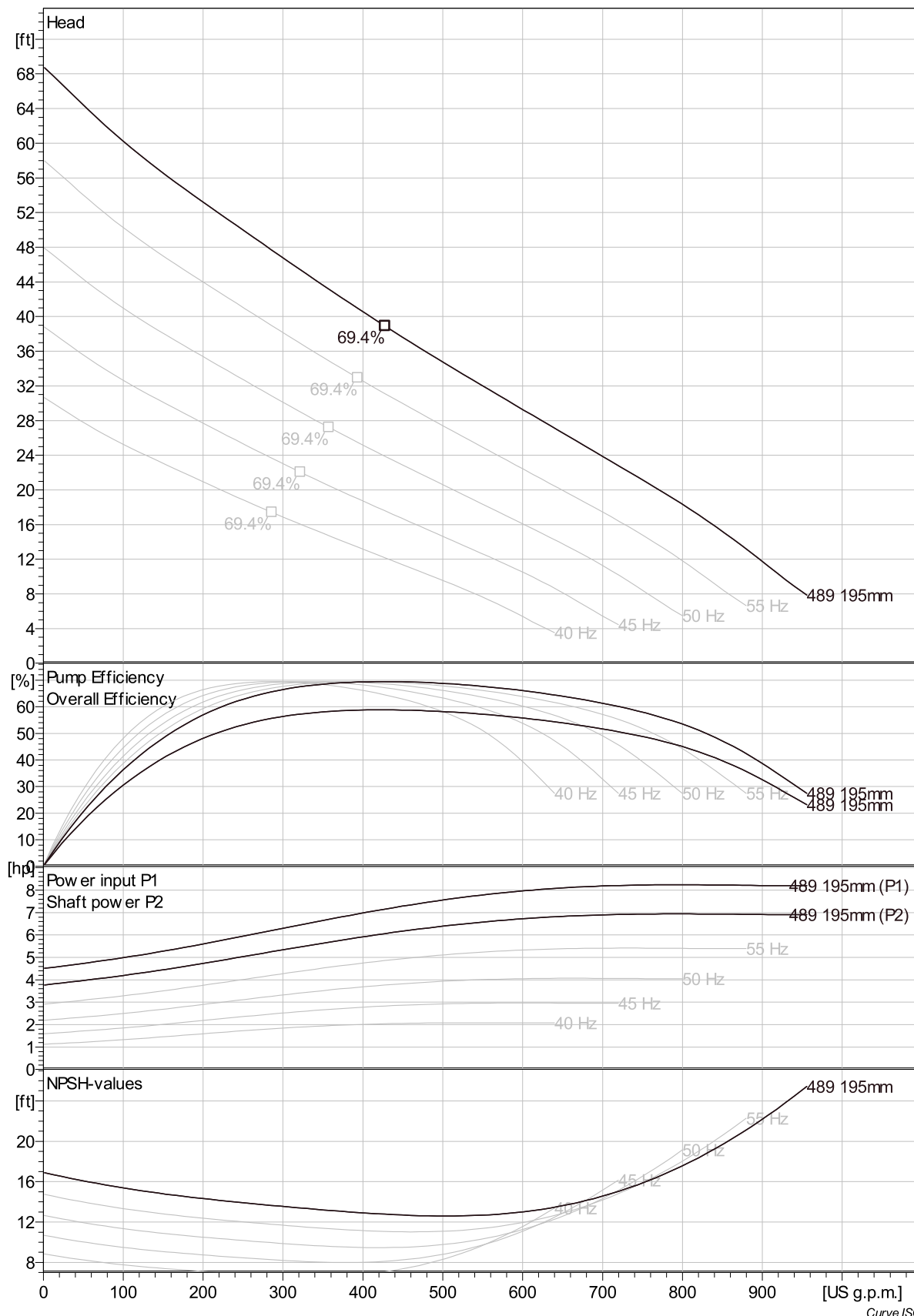


NP 3127 HT 3~ Adaptive 489
Duty Analysis



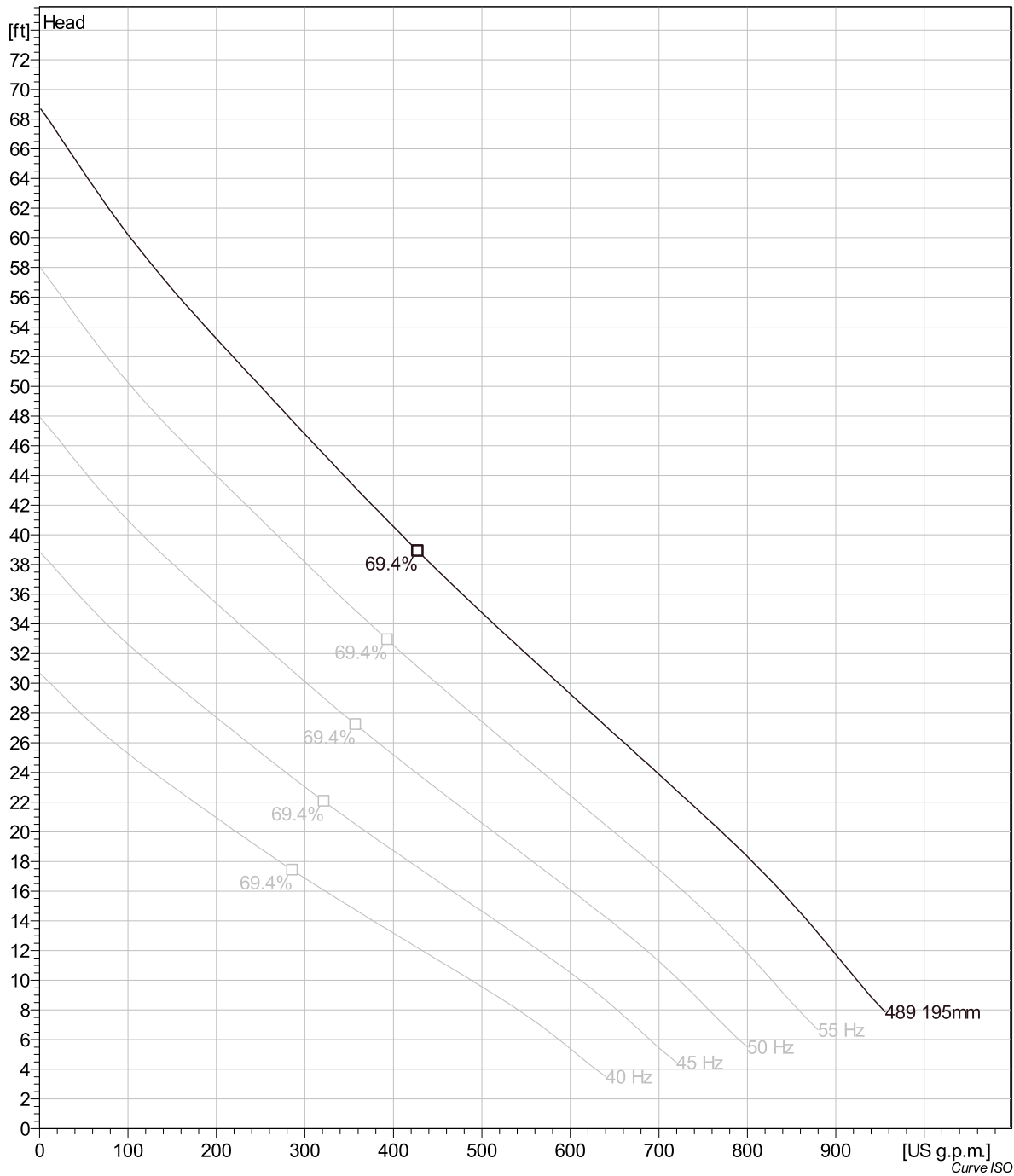
Project	Project ID	Created by	Created on 7/14/2018	Last update
---------	------------	------------	-------------------------	-------------

NP 3127 HT 3~ Adaptive 489 VFD Curve



Project	Project ID	Created by	Created on 7/14/2018	Last update
---------	------------	------------	-------------------------	-------------

NP 3127 HT 3~ Adaptive 489
VFD Analysis



Project

Project ID

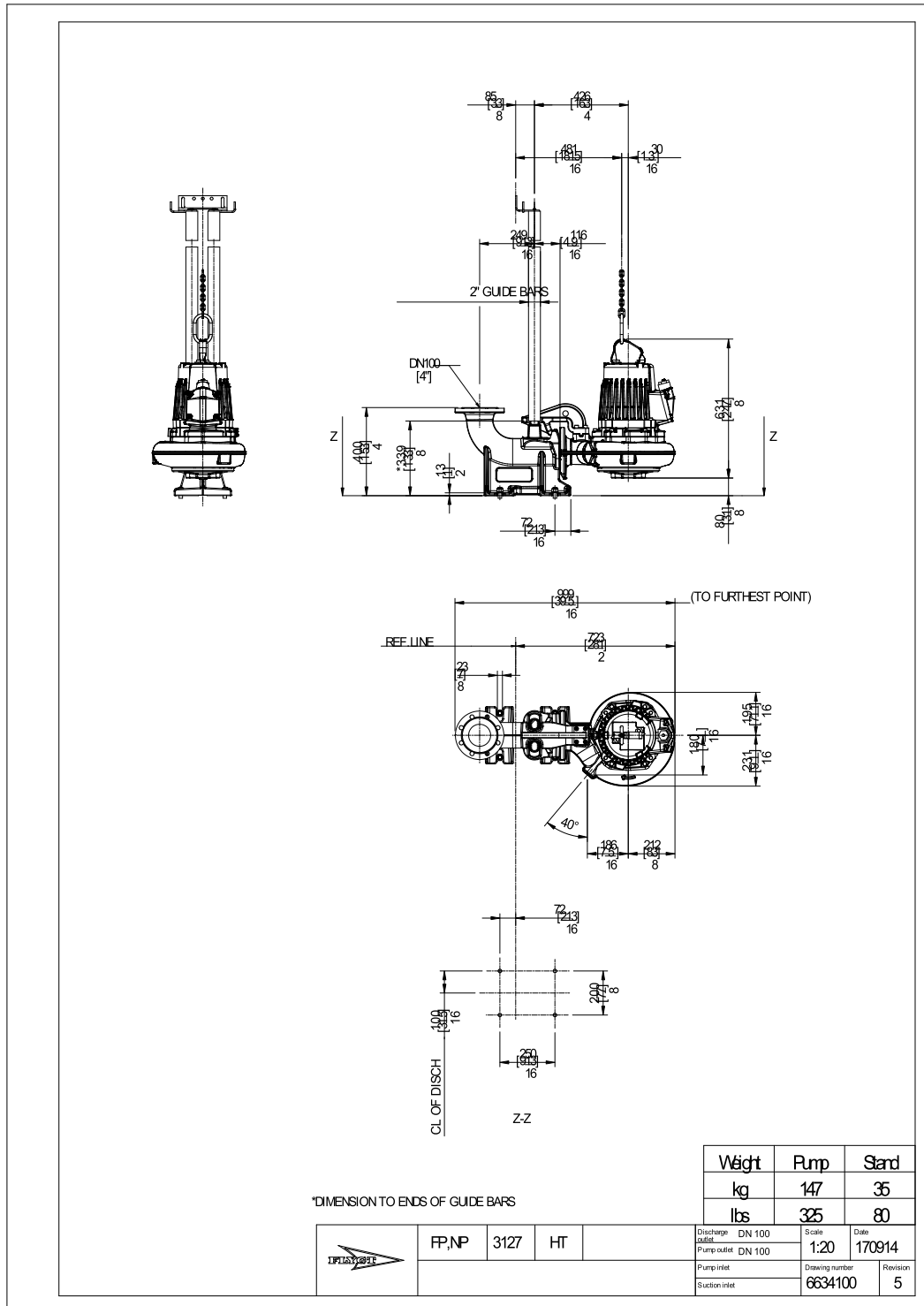
Created by

Created on
7/14/2018

Last update

NP 3127 HT 3~ Adaptive 489

Dimensional drawing



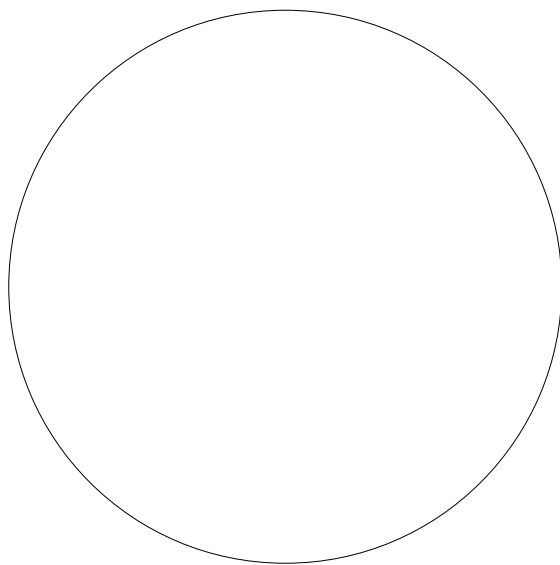
Project	Project ID	Created by	Created on	Last update
			7/14/2018	

NP 3127 HT 3~ Adaptive 489

Life cycle costs (LCC)

Total lifetime	15	Inflation rate (rate of price increases)	2 %
Annual operating time	5600	Interest rate (for investment)	3 %
Energy cost per kWh	0.00 EUR		
Power input P1			

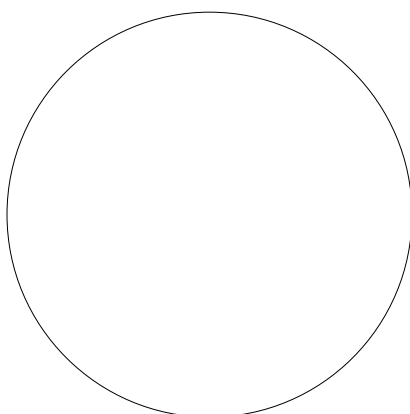
Total costs



EUR

0%	0.00 EUR	Energy
0%	0.00 EUR	Investment costs
0%	0.00 EUR	Installation & commissioning
0%	0.00 EUR	Operating cost
0%	0.00 EUR	Maintenance & repair
0%	0.00 EUR	Downtime
0%	0.00 EUR	Environmental
0%	0.00 EUR	Decommissioning

First year costs



EUR

0%	0.00 EUR	Energy (1st year)
0%	0.00 EUR	Investment costs (1st year)
0%	0.00 EUR	Installation & commissioning (1st year)
0%	0.00 EUR	Operating cost (1st year)
0%	0.00 EUR	Maintenance & repair (1st year)
0%	0.00 EUR	Downtime (1st year)
0%	0.00 EUR	Environmental (1st year)
0%	0.00 EUR	Decommissioning (1st year)

Disclaimer: The calculations and the results are based on user input values and general assumptions and provide only estimated costs for the input data. Xylem inc can therefore not guarantee that the estimated savings will actually occur.

Project	Project ID	Created by	Created on 7/14/2018	Last update
---------	------------	------------	-------------------------	-------------