



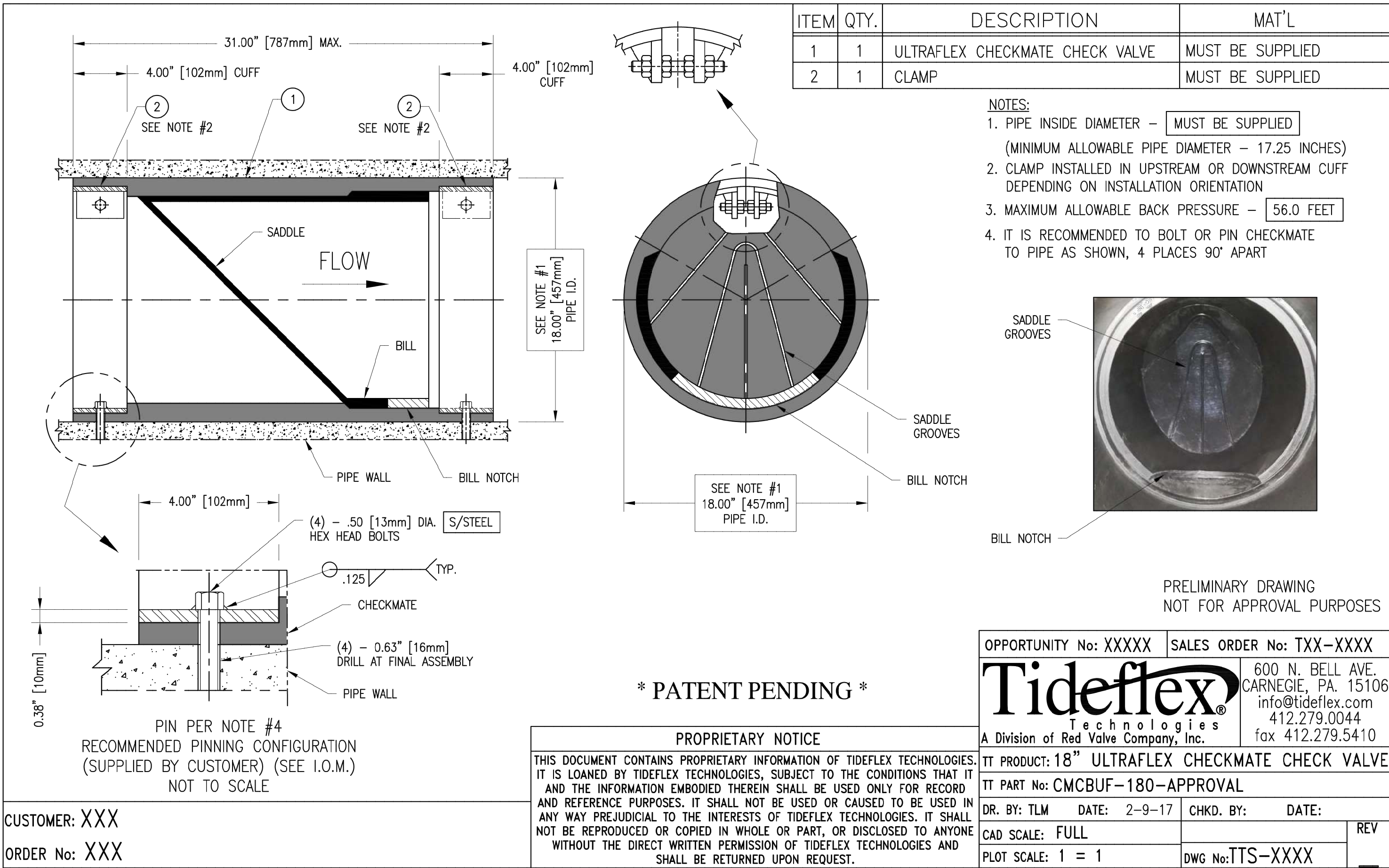
- SECTION A-A**
SCALE: NTS



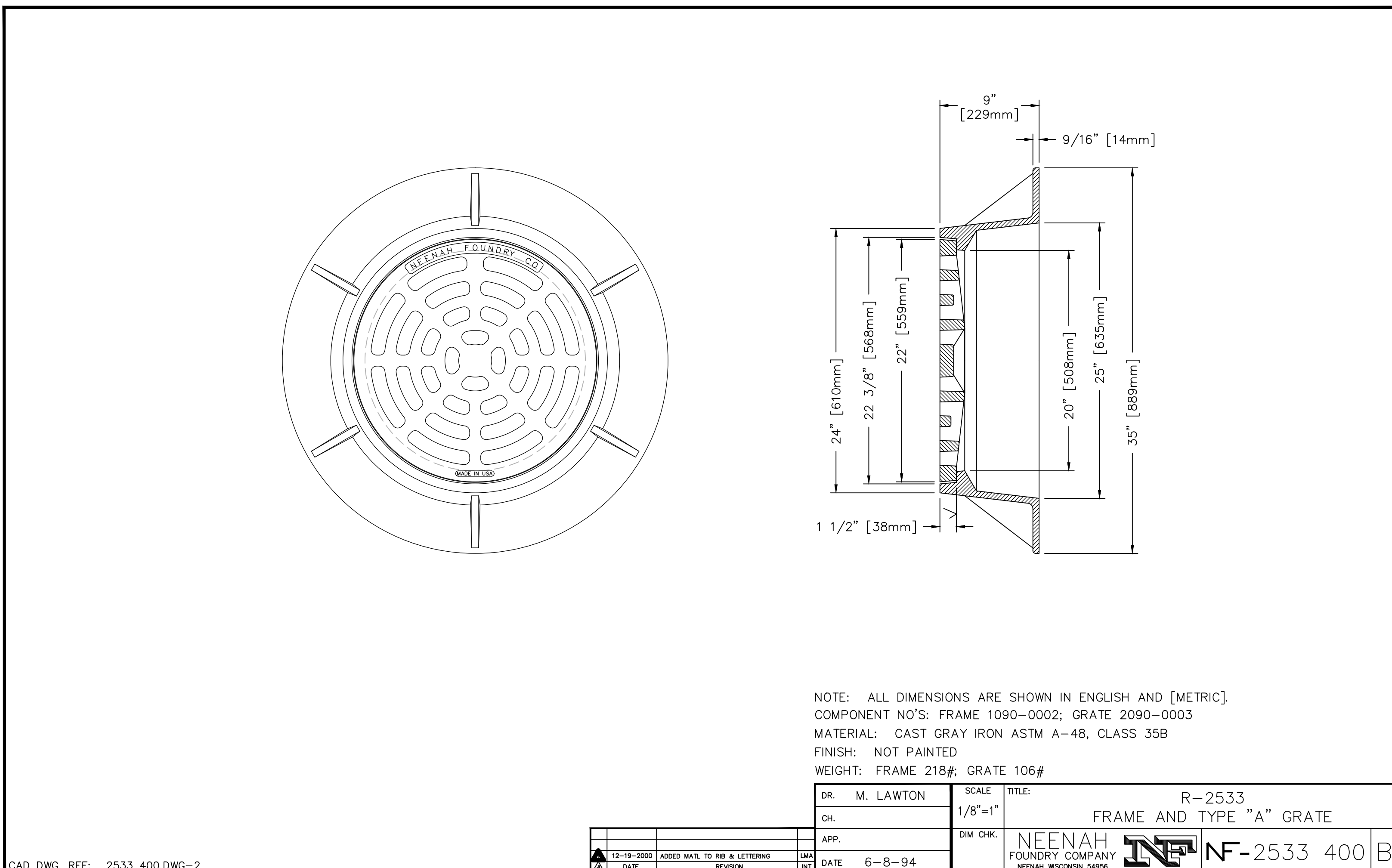
NOTE:
SEE STORM DRAIN PLAN FOR ALL INVERT ELEVATIONS AT PPC PUMPS.

CS504
151 OF 262

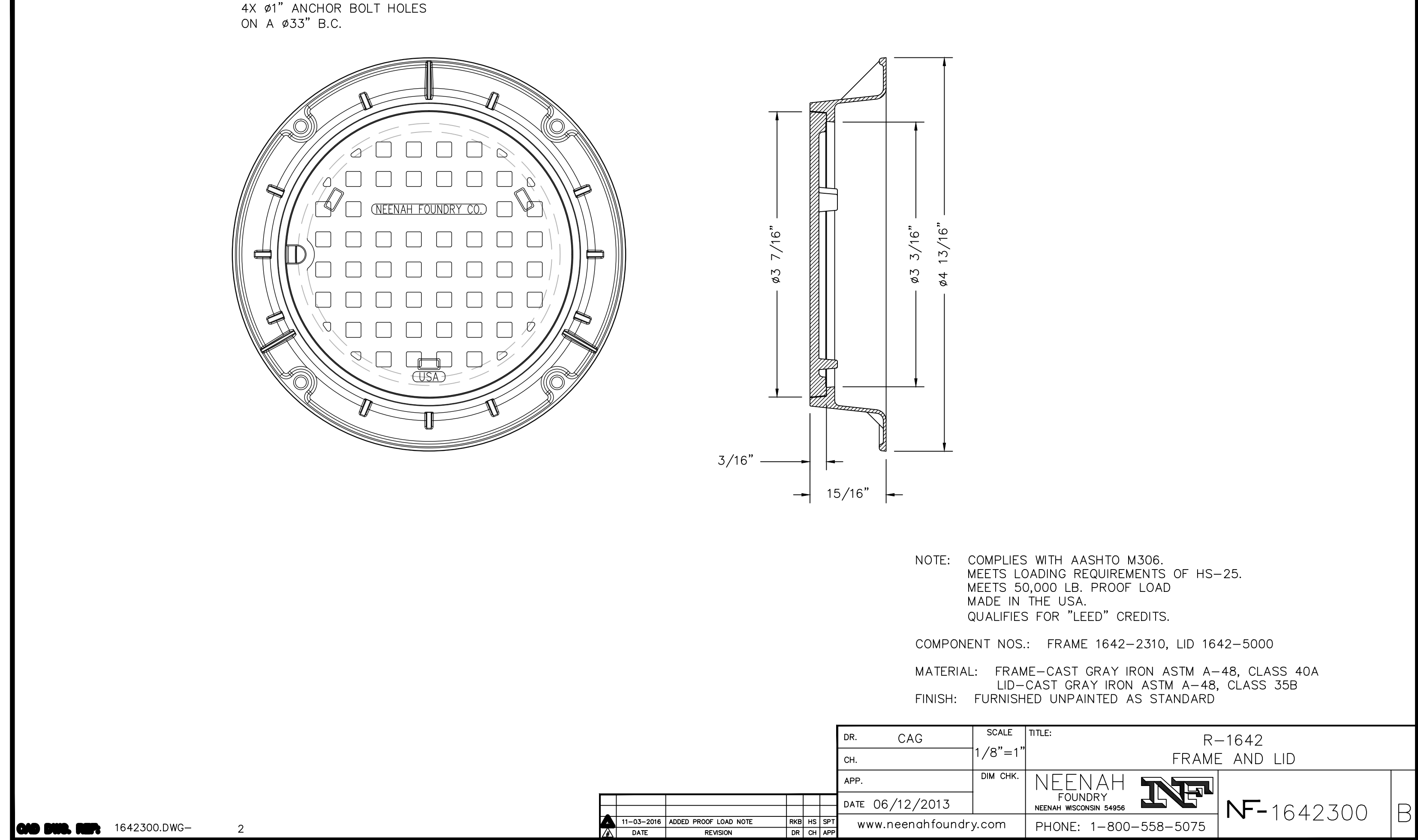
three inches = one foot
one and one-half inch = one foot
one inch = one foot
three-quarters inch = one foot
one-half inch = one foot
three-eighths inch = one foot
one-quarter inch = one foot
one-eighth inch = one foot



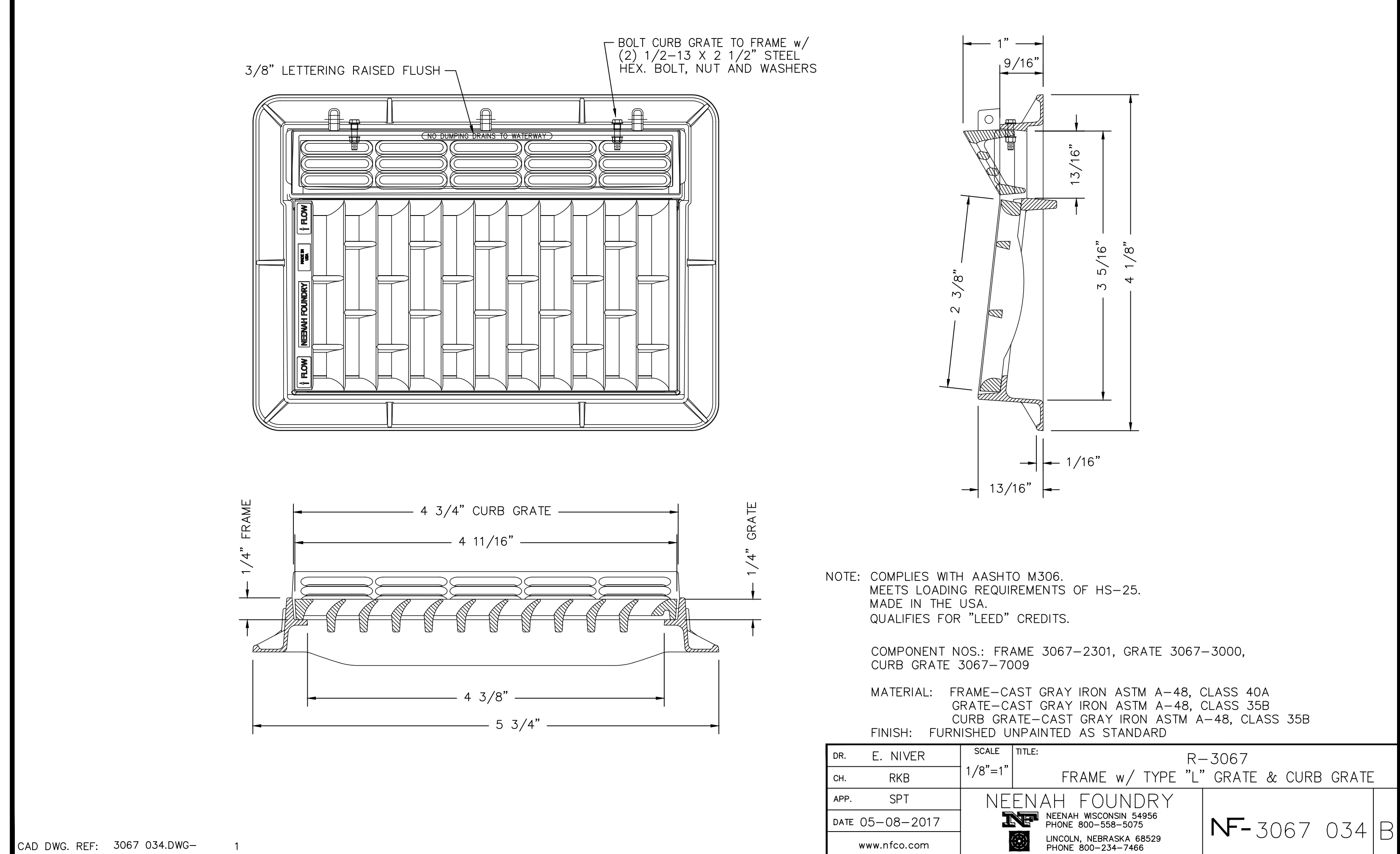
1 TIDEFLEX 18" ULTRAFLEX CHECKMATE CHECK VALVE
SCALE: NTS



3 AREA INLET FRAME AND GRATE (R-2533)
SCALE: NTS

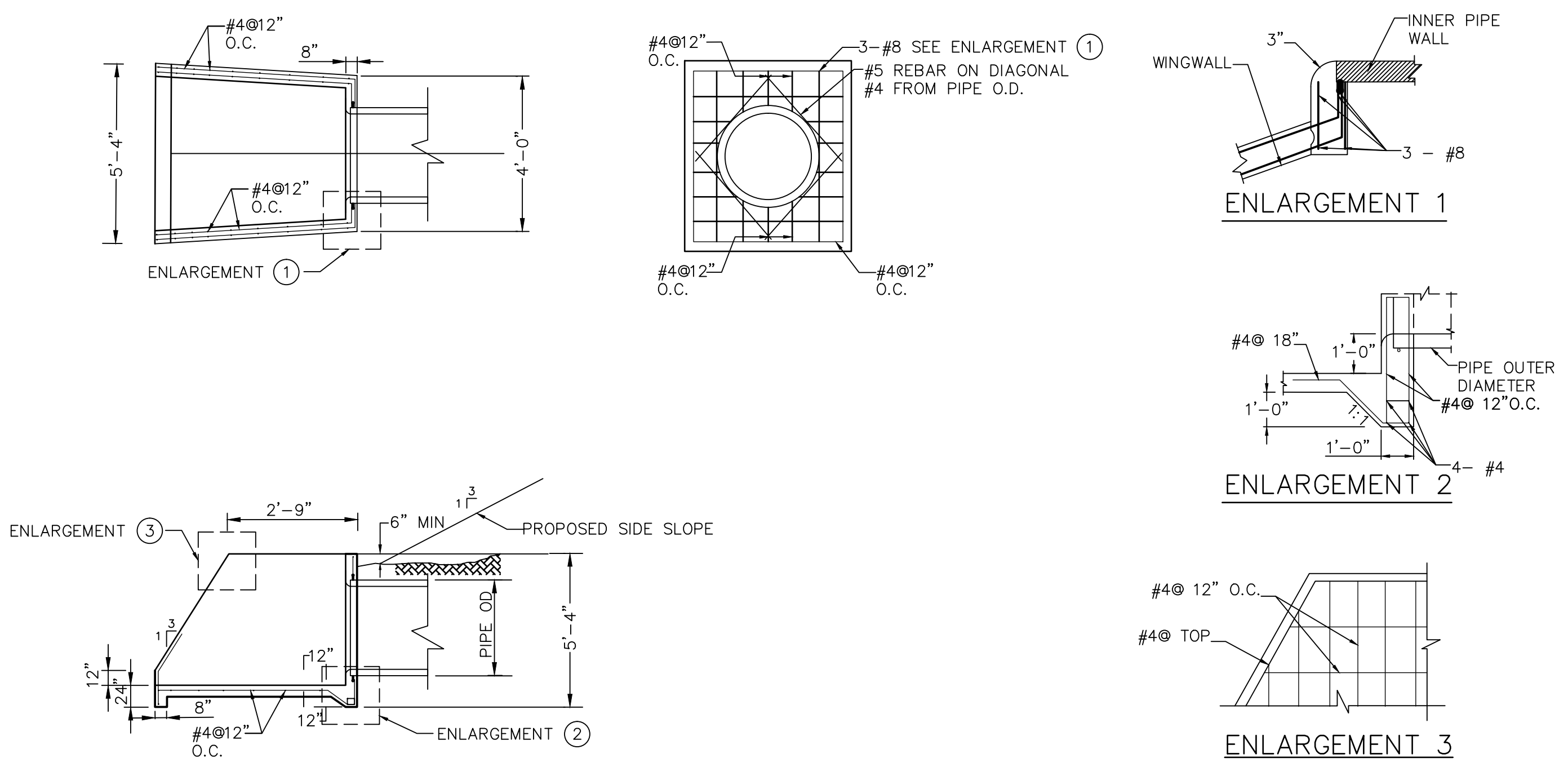


2 STORM DRAIN MANHOLE CASTING (R-1642)
SCALE: NTS

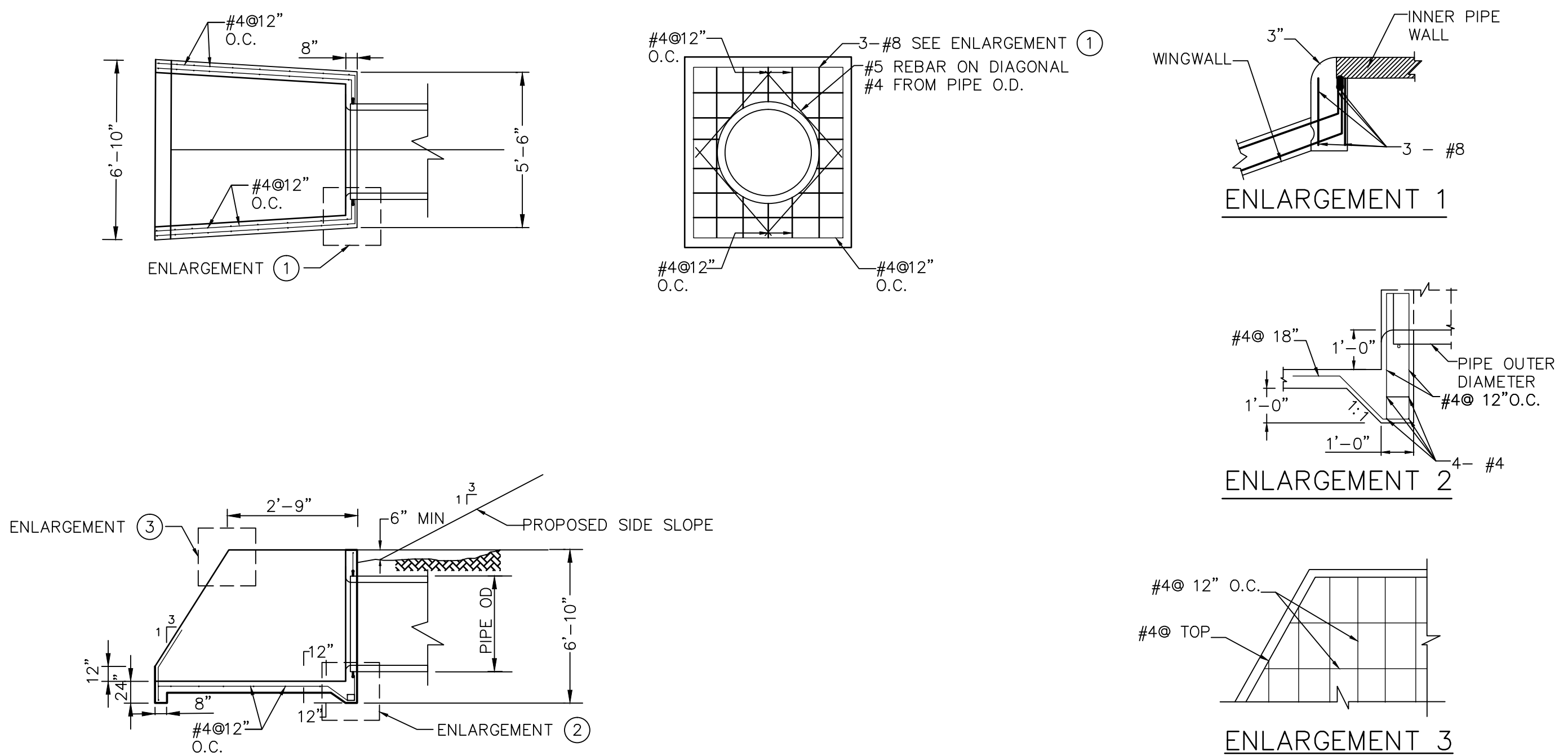


4 CURB INLET GRATE (R-3067)
SCALE: NTS

<div>Revisions:</div> <div>Date:</div>	<div>CONSULTANTS</div> <div>Structural Engineering, Electrical Engineering: HDR Engineering, Inc. 2365 Iron Point Rd. #500 Folsom, CA 95650 (916)-817-4924 Duane Hodgins</div> <div>Irrigation: Aqua Engineering, Inc. 375 Horseshoe Rd. Bldg. 2-202 Fort Collins, CO 80525 (970)-372-6104 Robert Beccard</div> <div>Cost Estimating: CPMI, Inc. 3665 Northwood Cir., Ste. 170 Sacramento, CA 95834 (916)-854-3663 Bryan Bertrand</div> <div>Geotechnical Engineering: Terracon Consultants, Inc. 30 Goldenland Ct., Ste. 100 Sacramento, CA 95834 (916)-928-4690 Robert Holmer</div>	<div>ARCHITECT/ENGINEER OF RECORD</div> <div>Project Management, Architecture, Landscape Architecture, Cemetery Planning, Civil Engineering, Land Survey: Anderson Engineering of MN, LLC 15005 1st Ave. N., Ste. 100 Plymouth, MN 55441 (763)-412-4000 Michael Brandvold, Project Manager</div> <div>ANDERSON ENGINEERING ENGINEERING • ARCHITECTURE • LAND SURVEYING ENVIRONMENTAL SERVICES • LANDSCAPE ARCHITECTURE</div>	<div>STAMP</div> <div>REGISTERED PROFESSIONAL ENGINEER ROGER A. ANDERSON C 80261 EXP. 9-30-18 06/27/2018 STATE OF CALIFORNIA</div>	<div>Office of Construction and Facilities Management</div> <div>VA U.S. Department of Veterans Affairs</div>	<div>Drawing Title</div> <div>STORM DETAILS 5</div> <div>Approved: Project Director</div>	<div>Phase</div> <div>BID DOCUMENTS</div>	<div>Project Title</div> <div>Sacramento Valley National Cemetery Phase 2 Development</div> <div>Location 5810 Midway Rd, Dixon, CA 95620</div> <div>Issue Date JUNE 27, 2018</div> <div>Checked CD</div> <div>Drawn EH</div>	<div>Project Number</div> <div>921CM2007</div> <div>Building Number</div> <div></div> <div>Drawing Number</div> <div>CS505</div> <div>152 OF 262</div>
--	---	--	--	---	---	---	---	--



2 PIPE HEADWALL, ENDWALL WINGWALL STRUCTURE (STORM NETWORK 1500)
SCALE: NTS



4 PIPE HEADWALL, ENDWALL WINGWALL STRUCTURE (PUMP STATION #2 OUTLET)
SCALE: NTS

VA FORM 08-6231

1	2	3	4	5	6	7	8	9	10
---	---	---	---	---	---	---	---	---	----