

LEGEND

PROPERTY LIMIT

MIDWAY ROAD

MIDWAY ROAD

MIDWAY ROAD

SEE SHEET X-501 FOR
MAINTENANCE BUILDING
ENLARGEMENT
AND GNSS DETAILS.

SERVICE ROAD

COLUMBARIUM
3

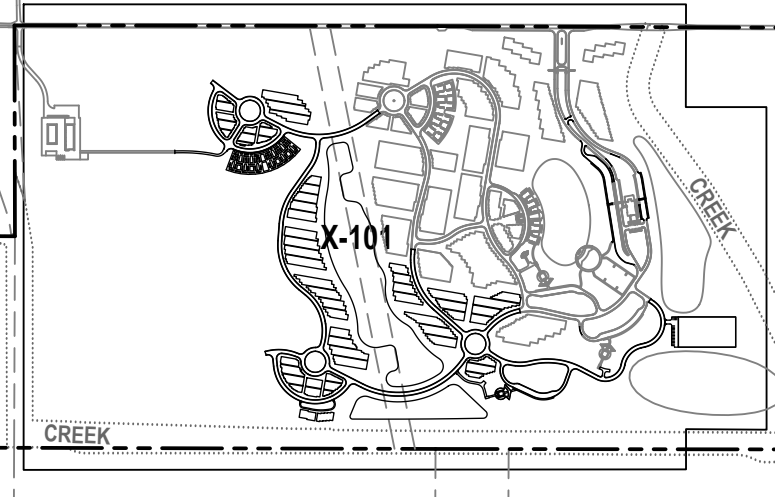
POND
(1/2 ac.)

SWEENEY CREEK

0 120' 240'



KEY MAP: N.T.S.



CONSULTANTS

Structural Engineering, Electrical Engineering:
HDR Engineering, Inc.
2365 Iron Point Rd. #500
Folsom, CA 95650
(916)-817-4924
Duane Hodgins

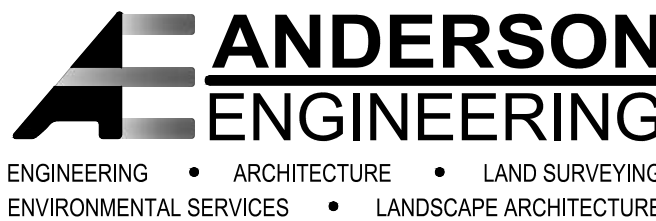
Irrigation:
Aqua Engineering, Inc.
373 Horseshoe Rd., Bldg. 2-202
Fort Collins, CO 80525
(970)-372-6104
Robert Beccard

Cost Estimating:
CPMI, Inc.
3265 Northwood Cir., Ste. 170
Eagan, MN 55121
(952)-854-3663
Bryan Bertrand

Geotechnical Engineering:
Terracon Consultants, Inc.
50 Goldenland Ct., Ste. 100
Sacramento, CA 95834
(916)-928-4690
Robert Holmer

ARCHITECT/ENGINEER OF RECORD

Project Management, Architecture, Landscape Architecture,
Cemetery Planning, Civil Engineering, Land Survey:
Anderson Engineering of MN, LLC
13605 1st Ave. N., Ste. 100
Plymouth, MN 55441
(763)-412-4000
Michael Brandvold, Project Manager



STAMP



Office of
Construction
and Facilities
Management

VA U.S. Department
of Veterans Affairs

Drawing Title
GNSS PLAN

Approved: Project Director

Phase

BID DOCUMENTS

Project Title
Sacramento Valley National Cemetery
Phase 2 Development

Project Number
921CM2007
Building Number

Location
5810 Midway Rd, Dixon, CA 95620

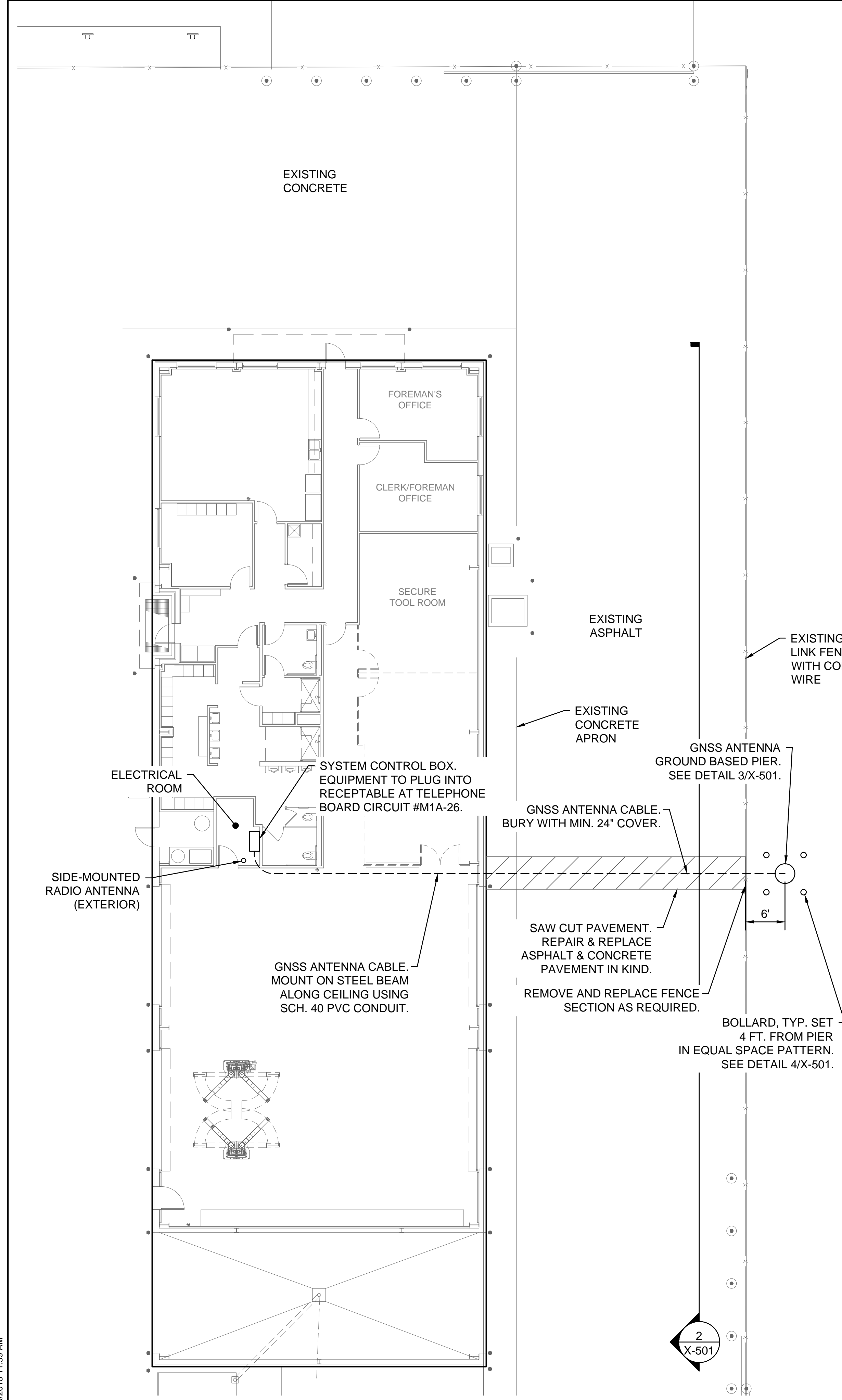
Issue Date
JUNE 27, 2018

Checked
MB

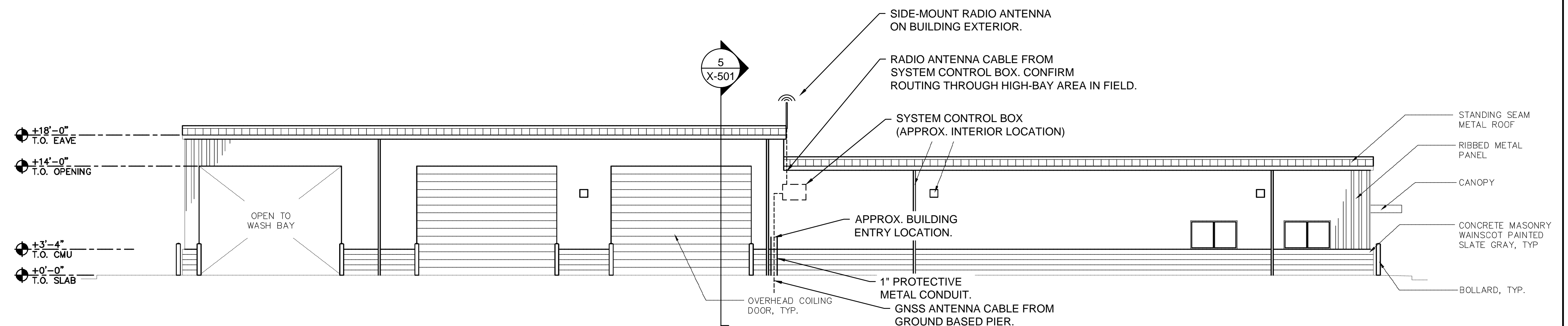
Drawn
EH

Drawing Number
X-101
165 OF 262

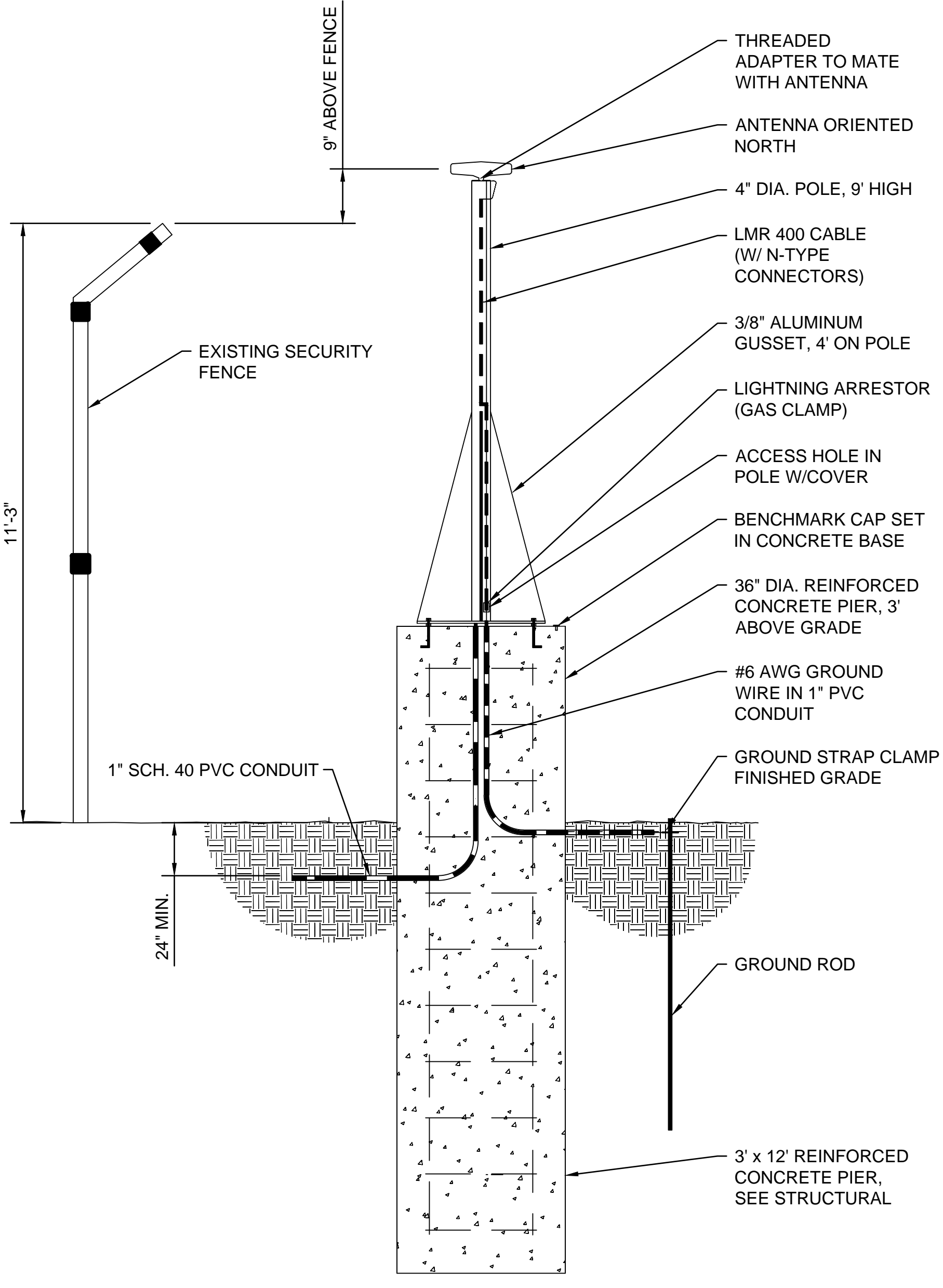
three inches = one foot
one and one-half inch = one foot
one inch = one foot
three-quarters inch = one foot
one-half inch = one foot
three-eighths inch = one foot
one-quarter inch = one foot
one-eighth inch = one foot



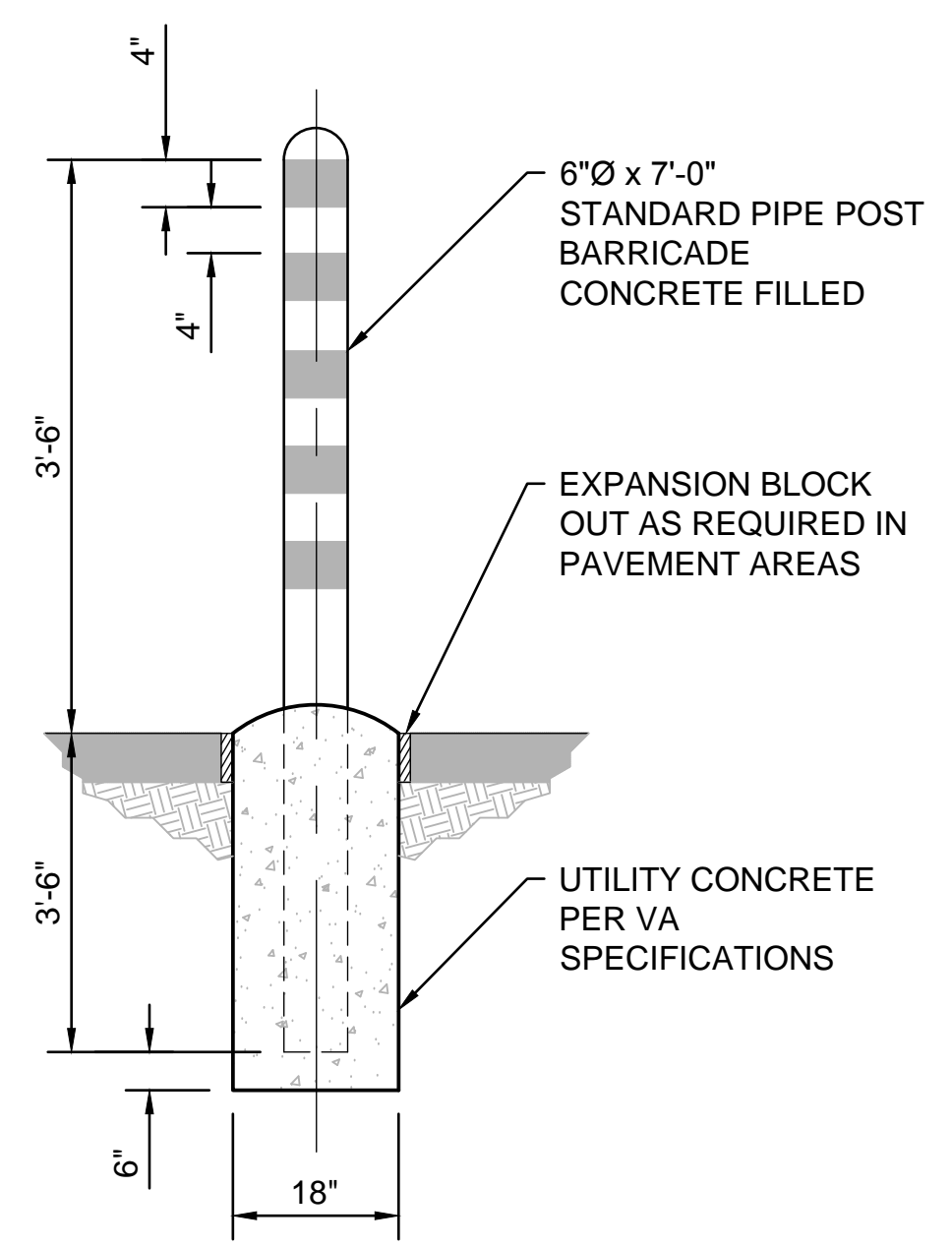
1 MAINTENANCE BUILDING ENLARGEMENT
SCALE: 1"=10'



2 MAINTENANCE BUILDING - EAST ELEVATION
SCALE: 1/8" = 1'-0"



3 GPS ANTENNA MOUNTING DETAIL
SCALE: NTS

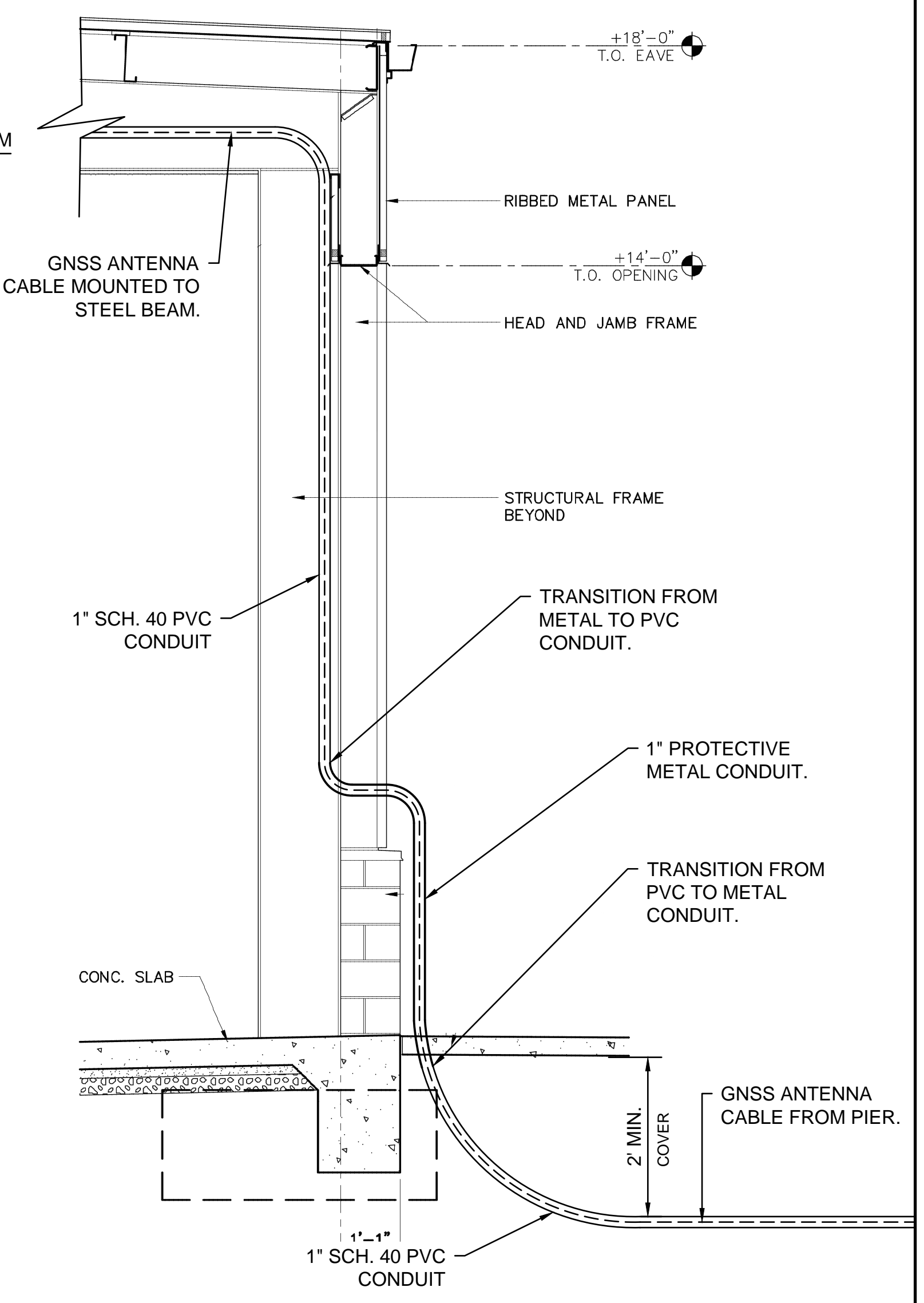


NOTES:

1. POST BARRICADES SHALL BE PAINTED WITH ONE PRIME COAT OF RED OXIDE (PAINT NO.1). ONE FINISH COAT OF DULL BLACK ENAMEL PER VA SPECIFICATIONS AND STRIPES CONSISTING OF 4" BANDS OF YELLOW REFLECTORIZED TAPE SHALL BE USED UNLESS OTHERWISE SPECIFIED ON THE PLANS.

2. FINISH COLOR COMBINATIONS OTHER THAN THAT SPECIFIED ABOVE, SHALL BE SUBMITTED TO THE AGENCY FOR APPROVAL.

4 STEEL PIPE BOLLARD
SCALE: NTS



5 WALL SECTION
SCALE: NTS

GNSS CONSTRUCTION & INSTALLATION NOTES

- ALL GLOBAL NAVIGATION SATELLITE SYSTEM (GNSS) EQUIPMENT SHALL BE INSTALLED IN ACCORDANCE WITH NGS CORS GUIDELINES AND GNSS REFERENCE SYSTEM SPEC SECTION 11 83 00.
- THE CONTRACTOR SHALL FURNISH ALL LABOR, MATERIALS, MANPOWER, TOOLS, AND EQUIPMENT REQUIRED TO INSTALL AND MAKE A FULLY OPERATIONAL GNSS REFERENCE SYSTEM.
- ALL NECESSARY HARDWARE, CONDUITS, JUNCTION BOXES AND FITTINGS REQUIRED FOR A COMPLETE AND FUNCTIONAL SYSTEM IN ACCORDANCE WITH MANUFACTURER'S RECOMMENDATIONS AND NGS CORS GUIDELINES SHALL BE PROVIDED.
- ALL EQUIPMENT AND ACCESSORIES WILL BE BRAND NEW, UNUSED, AND NOT RECONDITIONED, REMANUFACTURED, NOR RE-CERTIFIED.
- CONFIRM ALL UNDERGROUND UTILITY PRIOR TO SYSTEM INSTALLATION. CALL 811 BEFORE ANY EXCAVATION.
- GNSS EQUIPMENT WITHIN SYSTEM CONTROL BOX TO PLUG INTO RECEPTACLE AT TELEPHONE BOARD CIRCUIT #M1A-26 LOCATED IN ELECTRICAL ROOM OF MAINTENANCE BUILDING.

CONSULTANTS		ARCHITECT/ENGINEER OF RECORD		Office of Construction and Facilities Management		Drawing Title GNSS DETAILS		Phase BID DOCUMENTS		Project Title Sacramento Valley National Cemetery Phase 2 Development		Project Number 921CM2007	
Structural Engineering, Electrical Engineering: HDR Engineering, Inc. 2365 Iron Point Rd. #500 Folsom, CA 95630 (916)-817-4924 Duane Hodgins		Irrigation: Aqua Engineering, Inc. 375 Horseshoe Rd., Bldg. 2-202 Fort Collins, CO 80525 (970)-372-6104 Robert Beccard		Cost Estimating: CPMI, Inc. 3265 Northwood Cir., Ste. 170 Eagan, MN 55121 (952)-854-3663 Bryan Bertrand		Geotechnical Engineering: Terracon Consultants, Inc. 50 Goldenland Ct., Ste. 100 Sacramento, CA 95834 (916)-928-4690 Robert Holmer		Stamp Professional Engineer Robert A. Anderson C 80261 EXP. 9-30-18 06/27/2018 State of California		Approved: Project Director		Location 5810 Midway Rd, Dixon, CA 95620	
Revisions:		Date:		Anderson Engineering ENGINEERING • ARCHITECTURE • LAND SURVEYING ENVIRONMENTAL SERVICES • LANDSCAPE ARCHITECTURE		VA U.S. Department of Veterans Affairs		Issue Date JUNE 27, 2018		Checked MB	Drawn EH	Drawing Number X-501 166 OF 262	