

three inches = one foot
one and one-half inch = one foot
one inch = one foot
three-quarters inch = one foot
one-half inch = one foot
three-eighths inch = one foot
one-quarter inch = one foot
one-eighth inch = one foot

LEGEND
SF-### NEW CEMETERY SITE FURNISHINGS.

SITE FURNISHINGS SCHEDULE - (BASE BID)					
ID	TYPE	NORTHING	EASTING	DETAIL	DESCRIPTION
SF-601	FLOWER WATERING STATION	1912195.46	6596413.73	3 / LF501	SUTTER BUTTE DRIVE
SF-602	FLOWER WATERING STATION	1911896.78	6596555.26	3 / LF501	SUTTER BUTTE DRIVE
SF-603	FLOWER WATERING STATION	1911485.37	6595782.87	3 / LF501	SOLANO DRIVE
SF-604	FLOWER WATERING STATION	1911817.47	6595885.51	3 / LF501	LAKE BERRYESSA DRIVE
SF-605	FLOWER WATERING STATION	1912434.98	6595620.96	3 / LF501	LAKE BERRYESSA DRIVE
SF-608	FLOWER WATERING STATION	1912147.12	6595648.27	3 / LF501	LAKE BERRYESSA DRIVE
SF-609	FLOWER WATERING STATION	1913221.93	6595450.77	3 / LF501	SIERRA NAVAJO DR.
SF-610	FLOWER WATERING STATION	1911355.59	6595919.14	3 / LF501	ROAD A
SF-611	FLOWER WATERING STATION	1911649.49	6596734.31	3 / LF501	SOLANO DRIVE

GENERAL SITE FURNISHINGS NOTES:
1. ALL SITE FURNISHINGS SHALL BE LOCATED IN FIELD AS IDENTIFIED BY THE SCHEDULE ABOVE. FINAL APPROVAL SHALL BE ACQUIRED FROM RE PRIOR TO FINAL PLACEMENT.

1 SITE FURNISHINGS LAYOUT PLAN (BASE BID)
SCALE: 1" = 120' (30" x 42" PAPER SIZE)

Revisions:

Date:

CONSULTANTS

Structural Engineering, Electrical Engineering:
HDR Engineering, Inc.
2365 Iron Point Rd. #500
Folsom, CA 95650
(916)-817-4924
Duane Hodgins

Irrigation:
Aqua Engineering, Inc.
375 Horsestooth Rd., Bldg. 2-202
Fort Collins, CO 80525
(970)-372-6104
Robert Beccard

Cost Estimating:
CPMI, Inc.
3265 Northwood Cir., Ste. 170
Eagan, MN 55121
(952)-854-3663
Bryan Bertrand

Geotechnical Engineering:
Terracon Consultants, Inc.
50 Goldenland Ct., Ste. 100
Sacramento, CA 95834
(916)-928-4690
Robert Holmer

ARCHITECT/ENGINEER OF RECORD

Project Management, Architecture, Landscape Architecture,
Cemetery Planning, Civil Engineering, Land Survey:
Anderson Engineering of MN, LLC
15065 1st Ave. N., Ste. 100
Plymouth, MN 55441
(763)-412-4000
Michael Brandvold, Project Manager

ANDERSON
ENGINEERING
ENGINEERING • ARCHITECTURE • LAND SURVEYING
ENVIRONMENTAL SERVICES • LANDSCAPE ARCHITECTURE

STAMP

REGISTERED PROFESSIONAL ENGINEER
ROBERT A. ANDERSON
C 80261
Exp. 9-30-18
06/27/2018
STATE OF CALIFORNIA

Office of Construction and Facilities Management

VA U.S. Department of Veterans Affairs

Drawing Title

SITE FURNISHINGS LAYOUT PLAN (BASE BID)

Approved: Project Director

Phase

BID DOCUMENTS

Project Title

Sacramento Valley National Cemetery Phase 2 Development

Location

5810 Midway Rd, Dixon, CA 95620

Issue Date

JUNE 27, 2018

Checked

JDL

Drawn

JAF

Project Number

921CM2007

Building Number

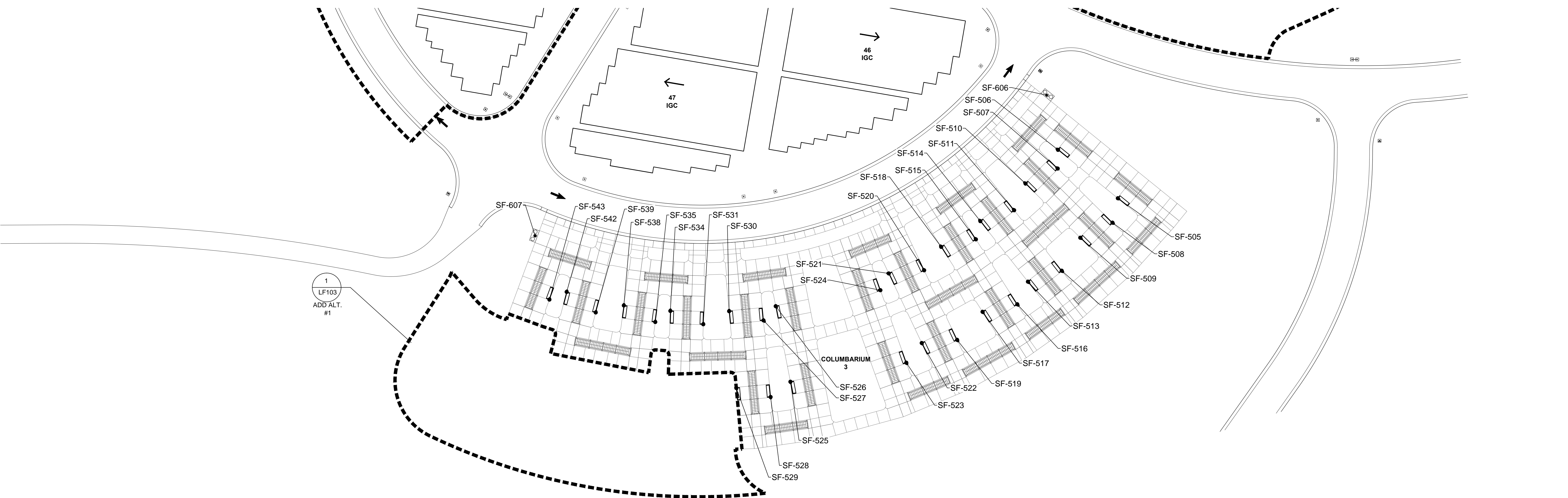
Drawing Number

LF101

207 OF 262

three inches = one foot
one and one-half inch = one foot
one inch = one foot
three-quarters inch = one foot
one-half inch = one foot
three-eighths inch = one foot
one-quarter inch = one foot
one-eighth inch = one foot

LEGEND
SF-### NEW CEMETERY SITE FURNISHINGS.



1 SITE FURNISHINGS COLUMBARIUM COURT 3 (BASE BID)

SCALE: 1" = 30' (30" x 42" PAPER SIZE)

SITE FURNISHINGS SCHEDULE - COLUMBARIUM COURT 3 (BASE BID)

ID	TYPE	NORTHING	EASTING	DETAIL	DESCRIPTION
SF-505	8' BENCH	1912905.45	6595682.66	5 / LF501	COLUMBARIUM 3
SF-506	8' BENCH	1912936.98	6595643.71	5 / LF501	COLUMBARIUM 3
SF-507	8' BENCH	1912924.79	6595643.52	5 / LF501	COLUMBARIUM 3
SF-508	8' BENCH	1912889.55	6595679.15	5 / LF501	COLUMBARIUM 3
SF-509	8' BENCH	1912879.76	6595658.21	5 / LF501	COLUMBARIUM 3
SF-510	8' BENCH	1912914.99	6595622.59	5 / LF501	COLUMBARIUM 3
SF-511	8' BENCH	1912897.66	6595615.16	5 / LF501	COLUMBARIUM 3
SF-512	8' BENCH	1912858.27	6595646.12	5 / LF501	COLUMBARIUM 3
SF-513	8' BENCH	1912851.16	6595624.13	5 / LF501	COLUMBARIUM 3
SF-514	8' BENCH	1912890.54	6595593.16	5 / LF501	COLUMBARIUM 3
SF-515	8' BENCH	1912878.70	6595590.27	5 / LF501	COLUMBARIUM 3
SF-516	8' BENCH	1912836.44	6595617.18	5 / LF501	COLUMBARIUM 3
SF-517	8' BENCH	1912831.54	6595594.59	5 / LF501	COLUMBARIUM 3
SF-518	8' BENCH	1912873.80	6595567.68	5 / LF501	COLUMBARIUM 3
SF-519	8' BENCH	1912813.27	6595578.03	5 / LF501	COLUMBARIUM 3
SF-520	8' BENCH	1912858.55	6595556.59	5 / LF501	COLUMBARIUM 3
SF-521	8' BENCH	1912856.50	6595533.56	5 / LF501	COLUMBARIUM 3
SF-522	8' BENCH	1912811.22	6595555.01	5 / LF501	COLUMBARIUM 3
SF-523	8' BENCH	1912798.41	6595544.96	5 / LF501	COLUMBARIUM 3
SF-524	8' BENCH	1912845.50	6595528.11	5 / LF501	COLUMBARIUM 3
SF-525	8' BENCH	1912786.00	6595469.53	5 / LF501	COLUMBARIUM 3
SF-526	8' BENCH	1912835.18	6595459.97	5 / LF501	COLUMBARIUM 3
SF-527	8' BENCH	1912825.96	6595451.98	5 / LF501	COLUMBARIUM 3
SF-528	8' BENCH	1912776.08	6595456.63	5 / LF501	COLUMBARIUM 3
SF-529	8' BENCH	1912782.03	6595434.29	5 / LF501	COLUMBARIUM 3
SF-530	8' BENCH	1912831.92	6595429.65	5 / LF501	COLUMBARIUM 3
SF-531	8' BENCH	1912823.42	6595412.82	5 / LF501	COLUMBARIUM 3
SF-534	8' BENCH	1912832.10	6595391.40	5 / LF501	COLUMBARIUM 3
SF-535	8' BENCH	1912824.89	6595381.57	5 / LF501	COLUMBARIUM 3
SF-538	8' BENCH	1912835.66	6595361.11	5 / LF501	COLUMBARIUM 3
SF-539	8' BENCH	1912831.11	6595342.81	5 / LF501	COLUMBARIUM 3
SF-542	8' BENCH	1912844.49	6595323.90	5 / LF501	COLUMBARIUM 3
SF-543	8' BENCH	1912839.48	6595312.67	5 / LF501	COLUMBARIUM 3
SF-606	FLOWER WATERING STATION	1912972.44	6595636.75	3 / LF501	COLUMBARIUM 3
SF-607	FLOWER WATERING STATION	1912881.04	6595303.35	3 / LF501	COLUMBARIUM 3

GENERAL SITE FURNISHINGS NOTES:

1. ALL SITE FURNISHINGS SHALL BE LOCATED IN FIELD AS IDENTIFIED BY THE SCHEDULE ABOVE. FINAL APPROVAL SHALL BE ACQUIRED FROM RE PRIOR TO FINAL PLACEMENT.

SITE FURNISHINGS SCHEDULE - COMMITTAL SERVICE SHELTER (BASE BID)

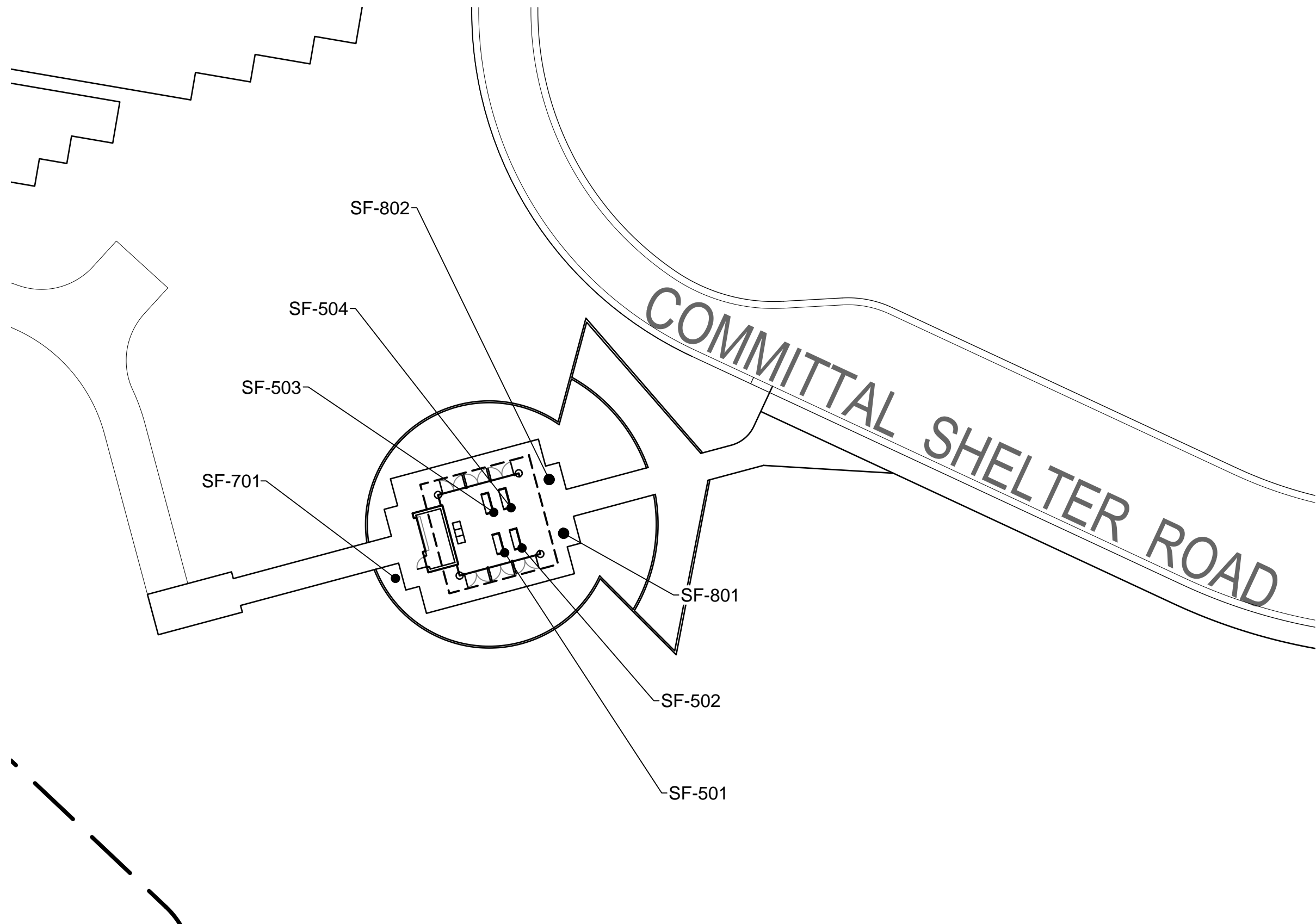
ID	TYPE	NORTHING	EASTING	DETAIL	DESCRIPTION
SF-501	6' BENCH	1911361.58	6596983.83	5 / LF501	COMMITTAL SERVICE SHELTER 3
SF-502	6' BENCH	1911362.92	6596988.82	5 / LF501	COMMITTAL SERVICE SHELTER 3
SF-503	6' BENCH	1911373.16	6596980.69	5 / LF501	COMMITTAL SERVICE SHELTER 3
SF-504	6' BENCH	1911374.50	6596985.68	5 / LF501	COMMITTAL SERVICE SHELTER 3
SF-701	TRASH RECEPTACLE	1911354.22	6596952.47	4 / LF501	COMMITTAL SERVICE SHELTER 3
SF-801	PLANTER	1911367.16	6597000.76	6 / LF501	COMMITTAL SERVICE SHELTER 3
SF-802	PLANTER	1911382.61	6596996.62	6 / LF501	COMMITTAL SERVICE SHELTER 3

GENERAL SITE FURNISHINGS NOTES:

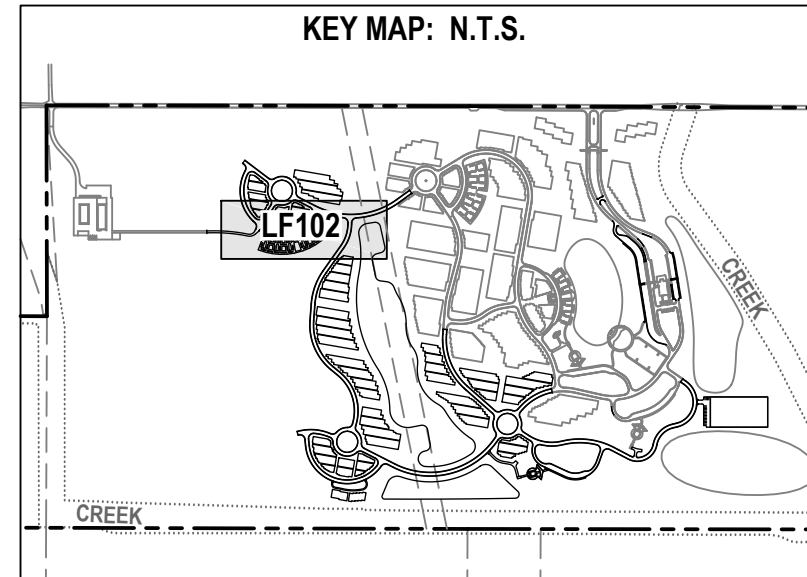
1. ALL SITE FURNISHINGS SHALL BE LOCATED IN FIELD AS IDENTIFIED BY THE SCHEDULE ABOVE. FINAL APPROVAL SHALL BE ACQUIRED FROM RE PRIOR TO FINAL PLACEMENT.

2 SITE FURNISHINGS - COMMITTAL SERVICE SHELTER 3

SCALE: 1" = 30' (30" x 42" PAPER SIZE)



NOTE:
NORTHINGS & EASTINGS ARE PROVIDED FOR GENERAL LOCATION & CONVENIENCE. ALL SITE FURNISHINGS SHALL BE FIELD LOCATED & VERIFIED IN COORDINATION WITH THE RE.



Revisions:
Date:

CONSULTANTS
Structural Engineering, Electrical Engineering:
HDR Engineering, Inc.
2365 Iron Point Rd. #500
Folsom, CA 95630
(916)-817-4924
Duane Hodgins
Irrigation:
Aqua Engineering, Inc.
375 Horseshoe Rd. Bldg. 2-202
Fort Collins, CO 80525
(970)-372-6104
Robert Beccard
Cost Estimating:
CPMI, Inc.
3265 Northwood Cir., Ste. 170
Eagan, MN 55121
(952)-854-3663
Bryan Bertrand
Geotechnical Engineering:
Terracon Consultants, Inc.
50 Goldenland Ct., Ste. 100
Sacramento, CA 95834
(916)-928-4690
Robert Holmer

ARCHITECT/ENGINEER OF RECORD
Project Management, Architecture, Landscape Architecture, Cemetery Planning, Civil Engineering, Land Survey:
Anderson Engineering of MN, LLC
13605 1st Ave. N., Ste. 100
Plymouth, MN 55441
(763)-412-4000
Michael Brandvold, Project Manager
ANDERSON ENGINEERING
ENGINEERING • ARCHITECTURE • LAND SURVEYING
ENVIRONMENTAL SERVICES • LANDSCAPE ARCHITECTURE

STAMP
ROGER A. ANDERSON
C 80261
EXP. 9-30-18
06/27/2018
STATE OF CALIFORNIA

Office of Construction and Facilities Management
VA U.S. Department of Veterans Affairs

Drawing Title
SITE FURNISHINGS COLUMBARIUM COURT 3 (BASE BID)
Approved: Project Director

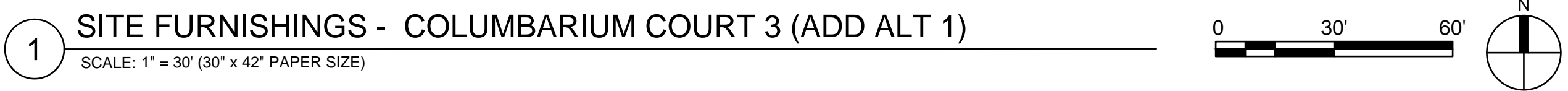
Phase
BID DOCUMENTS

Project Title
Sacramento Valley National Cemetery Phase 2 Development
Location
5810 Midway Rd, Dixon, CA 95620
Issue Date
JUNE 27, 2018
Checked
JDL
Drawn
JAF

Project Number
921CM2007
Building Number
Drawing Number
LF102
208 OF 262

Key National Cemetery Development		Project Number 921CM2007	
		Building Number	
d, Dixon, CA 95620		Drawing Number LF103	
Checked JDL	Drawn JAF	209 OF 262	

TS		ARCHITECT/ENGINEER OF
Irrigation:	Cost Estimating:	Geotechnical Engineering:
Aqua Engineering, Inc. 375 Horowitz Rd., Bldg. 2-202 Fort Collins, CO 80525 (970)-372-6104 Robert Beccard	CPM, Inc. 3285 Southwest Cir., Ste. 170 Englewood, MN 55121 (952)-854-3863 Bryan Bertram	Terracon Consultants, Inc. 50 Goldencrest Ct., Ste. 100 Sacramento, CA 95834 (916)-328-4680 Robert Holmer



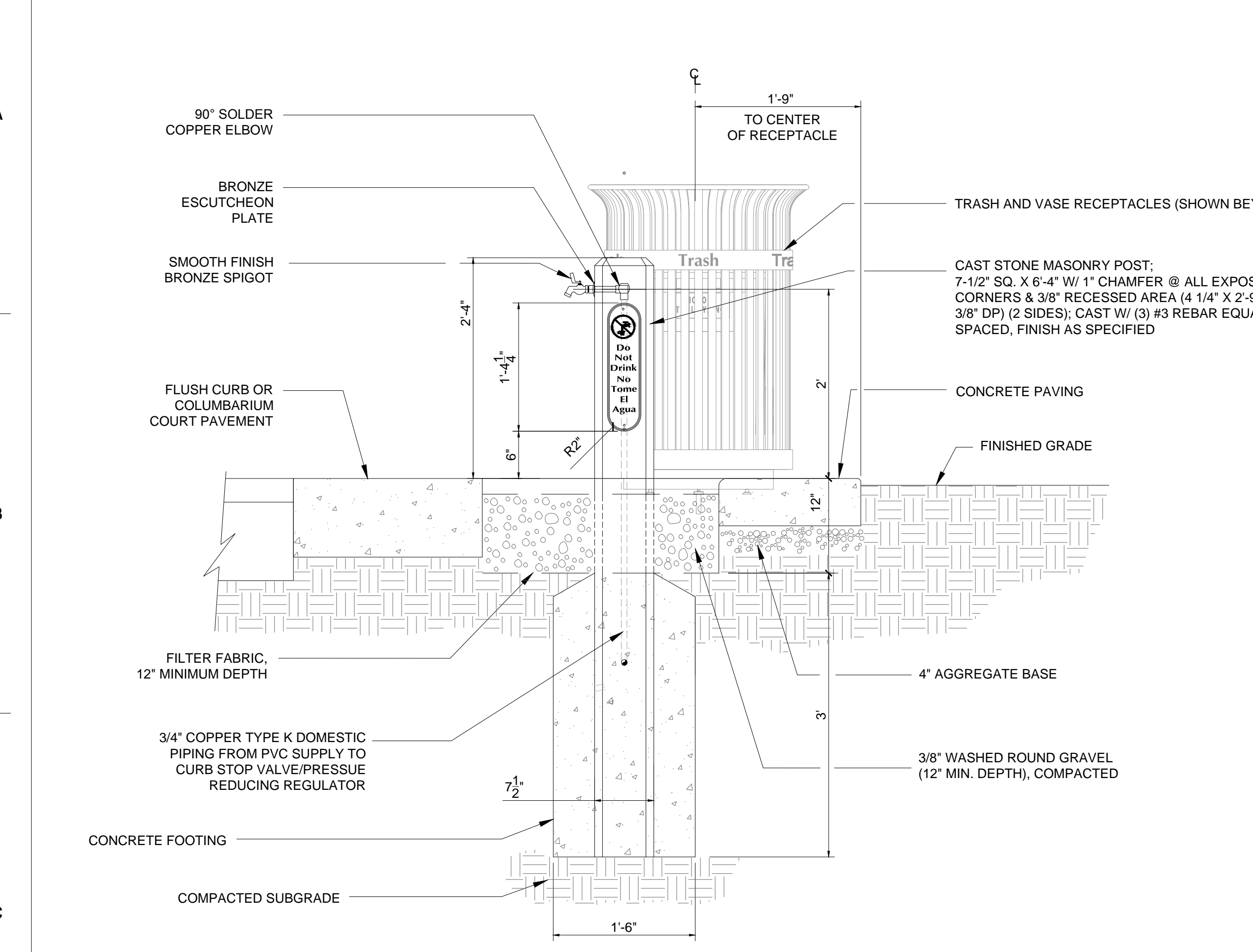
KEY MAP: N.T.S.

LF103

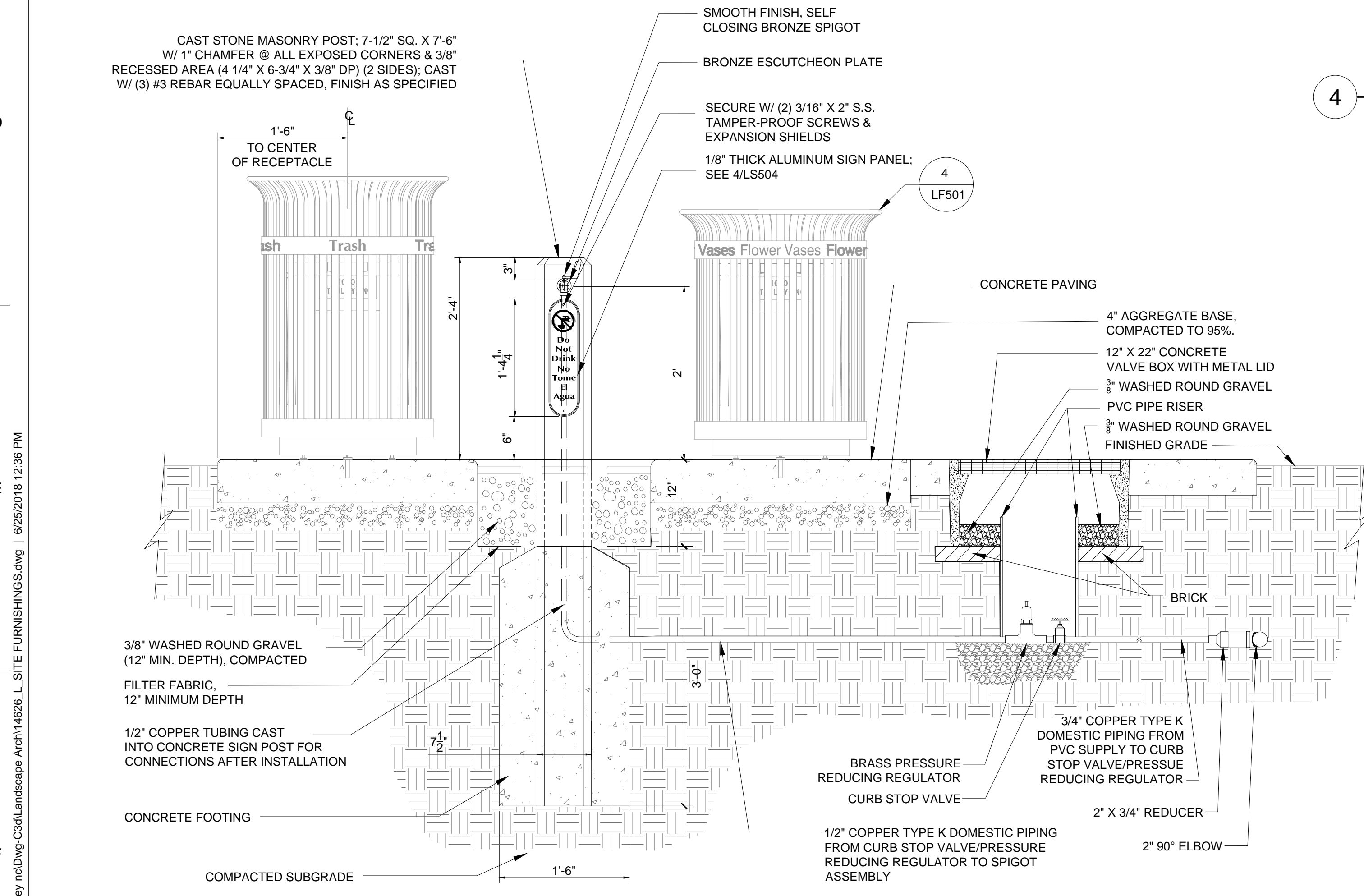
CREEK

CREEK

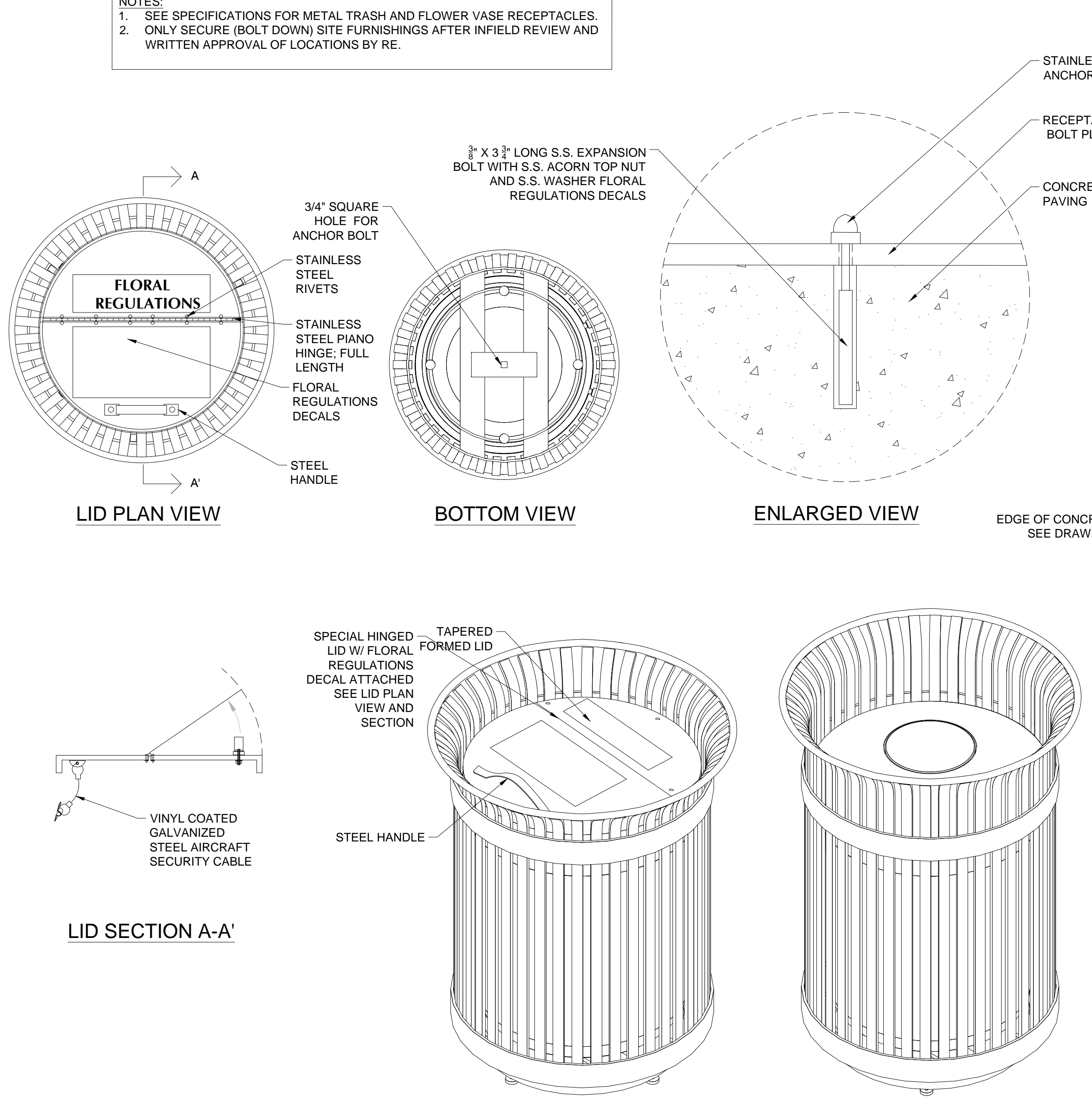
three inches = one foot
one and one-half inch = one foot
one inch = one foot
three-quarters inch = one foot
one-half inch = one foot
three-eighths inch = one foot
one-quarter inch = one foot
one-eighth inch = one foot
one-sixteenth inch = one foot



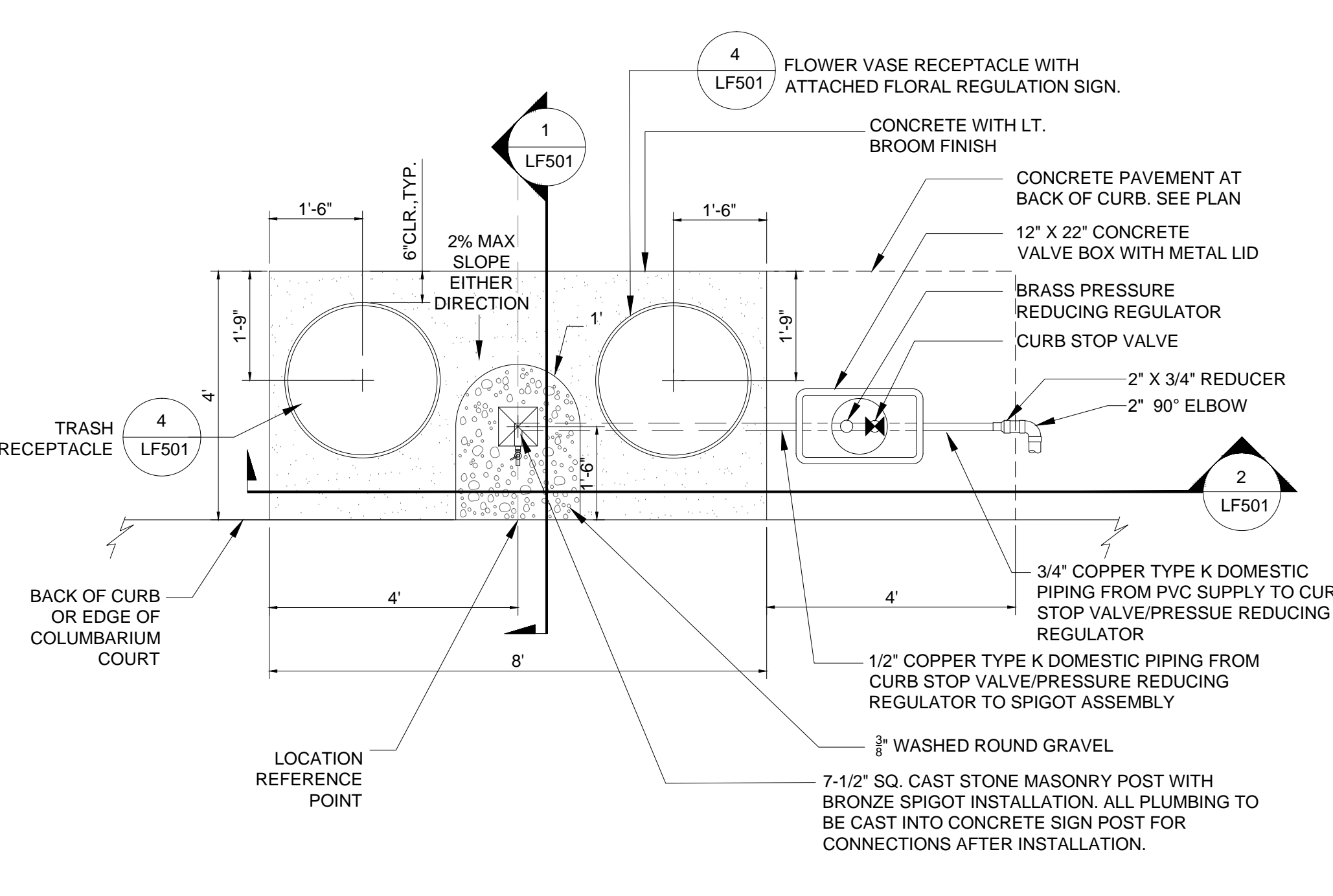
1 FLOWER WATER STATION ELEVATION
SCALE: 1" = 1' (30" x 42" PAPER SIZE)



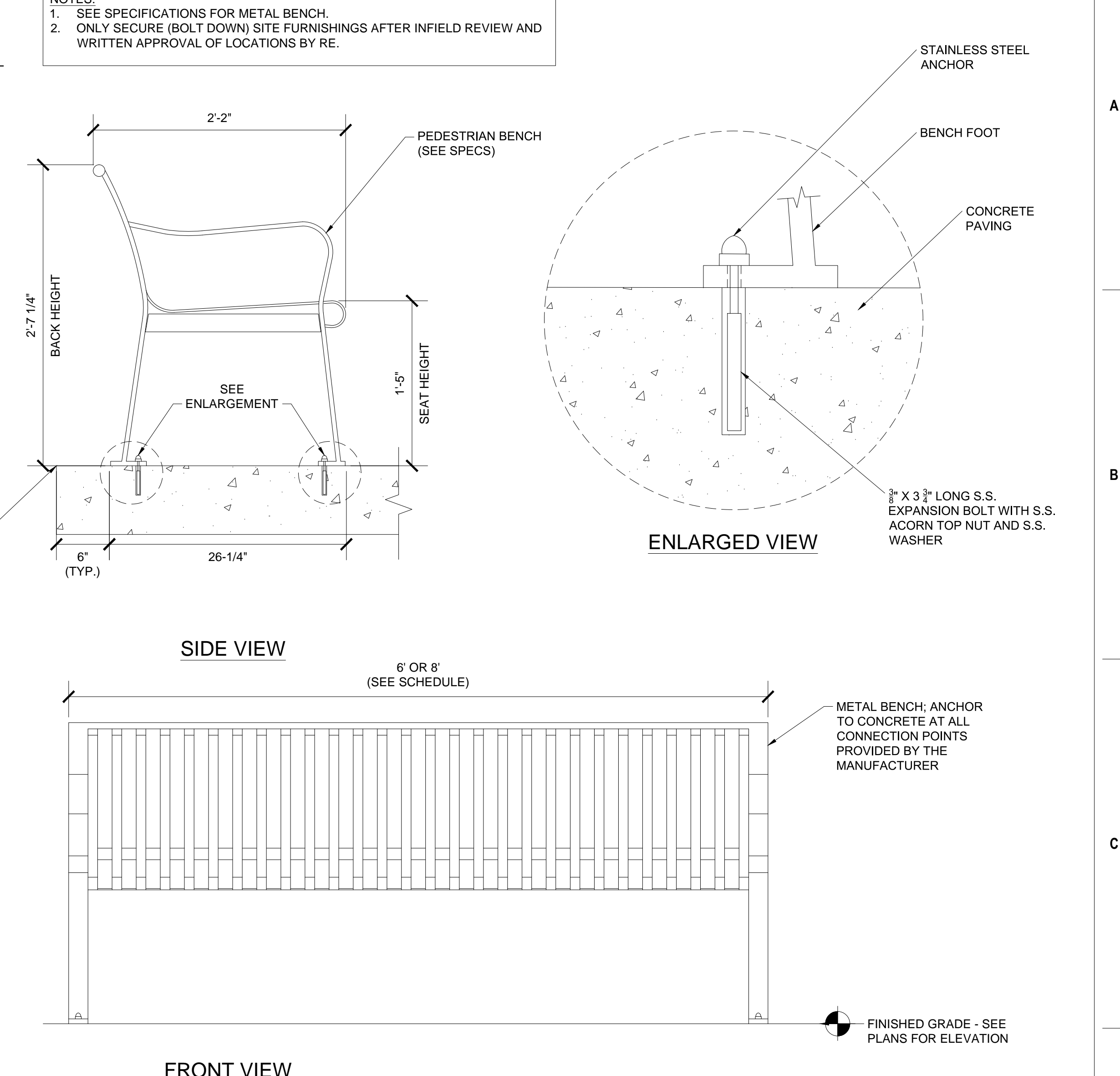
2 FLOWER WATER STATION SECTION
SCALE: 1" = 1' (30" x 42" PAPER SIZE)



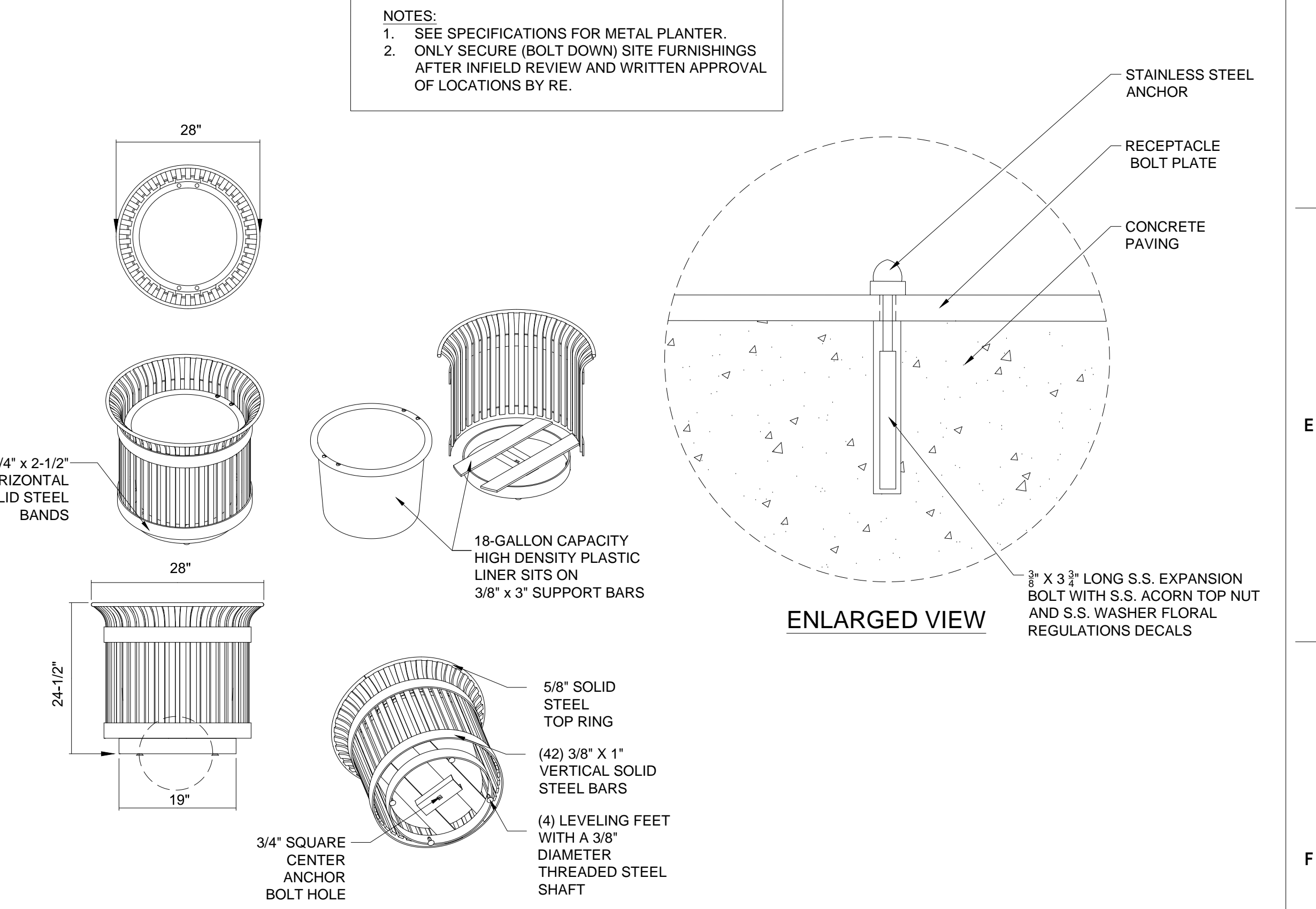
4 TRASH & VASE RECEPTACLES
SCALE: N.T.S. (30" x 42" PAPER SIZE)



3 FLOWER WATER STATION
SCALE: 1/2" = 1' (30" x 42" PAPER SIZE)



5 BENCH
SCALE: N.T.S. (30" x 42" PAPER SIZE)



6 PLANTER
SCALE: N.T.S. (30" x 42" PAPER SIZE)

Revisions:		Date:	CONSULTANTS		ARCHITECT/ENGINEER OF RECORD		STAMP		Office of Construction and Facilities Management		Drawing Title	Phase	Project Title		Project Number	
			Structural Engineering, Electrical Engineering		Project Management, Architecture, Landscape Architecture, Cemetery Planning, Civil Engineering, Land Survey		C 80261 EXP. 9-10-16 06/27/2018 CIVIL STATE OF CALIFORNIA		U.S. Department of Veterans Affairs		SITE FURNISHINGS DETAILS	BID DOCUMENTS	Sacramento Valley National Cemetery Phase 2 Development		921CM2007	
			Irrigation: Aqua Engineering, Inc. 375 Horseshoe Rd., Bldg. 2-202 Eagan, MN 55121 (952)-854-3863 Robert Beccard		Anderson Engineering of MN, LLC 13655 1st Ave. N., Ste. 100 Plymouth, MN 55441 (763)-412-4000 Michael Brandvold, Project Manager						Approved: Project Director		Location 5810 Midway Rd, Dixon, CA 95620		Building Number	
			Cost Estimating: CPML, Inc. 3265 Northwest Cir., Ste. 170 Sacramento, CA 95834 (916)-528-4699 Bryan Bertrand										Issue Date JUNE 27, 2018		Checked JDL	
			Geotechnical Engineering: Terracon Consultants, Inc. 50 Goldenland Ct., Ste. 100 Sacramento, CA 95834 (916)-528-4699 Robert Holmer										Drawn JAF		Drawing Number	
															LF501	
															210 OF 262	