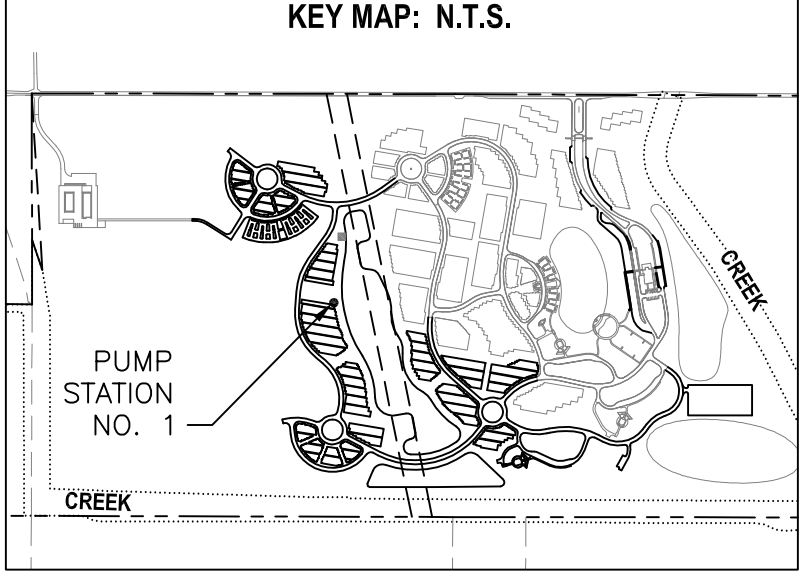
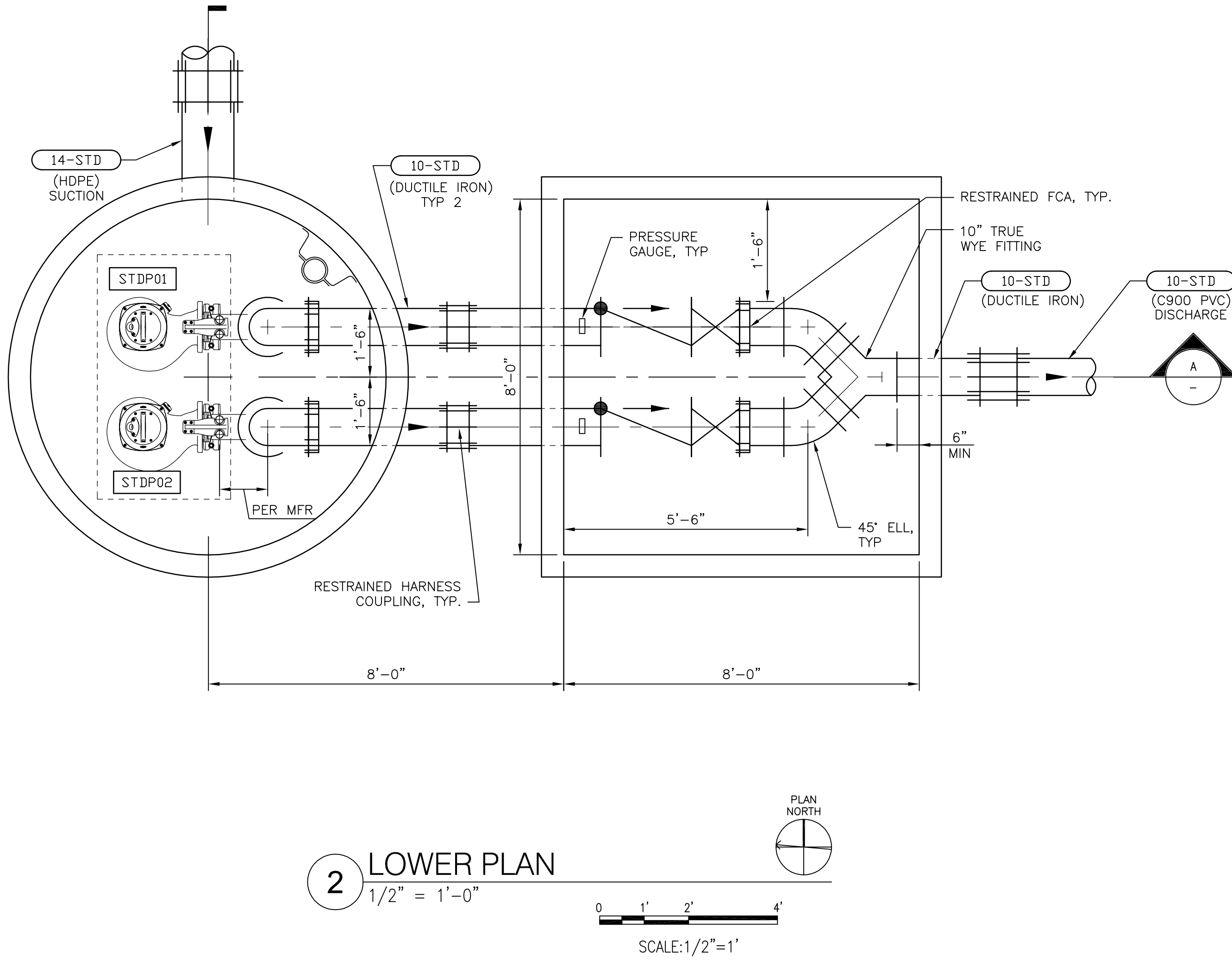
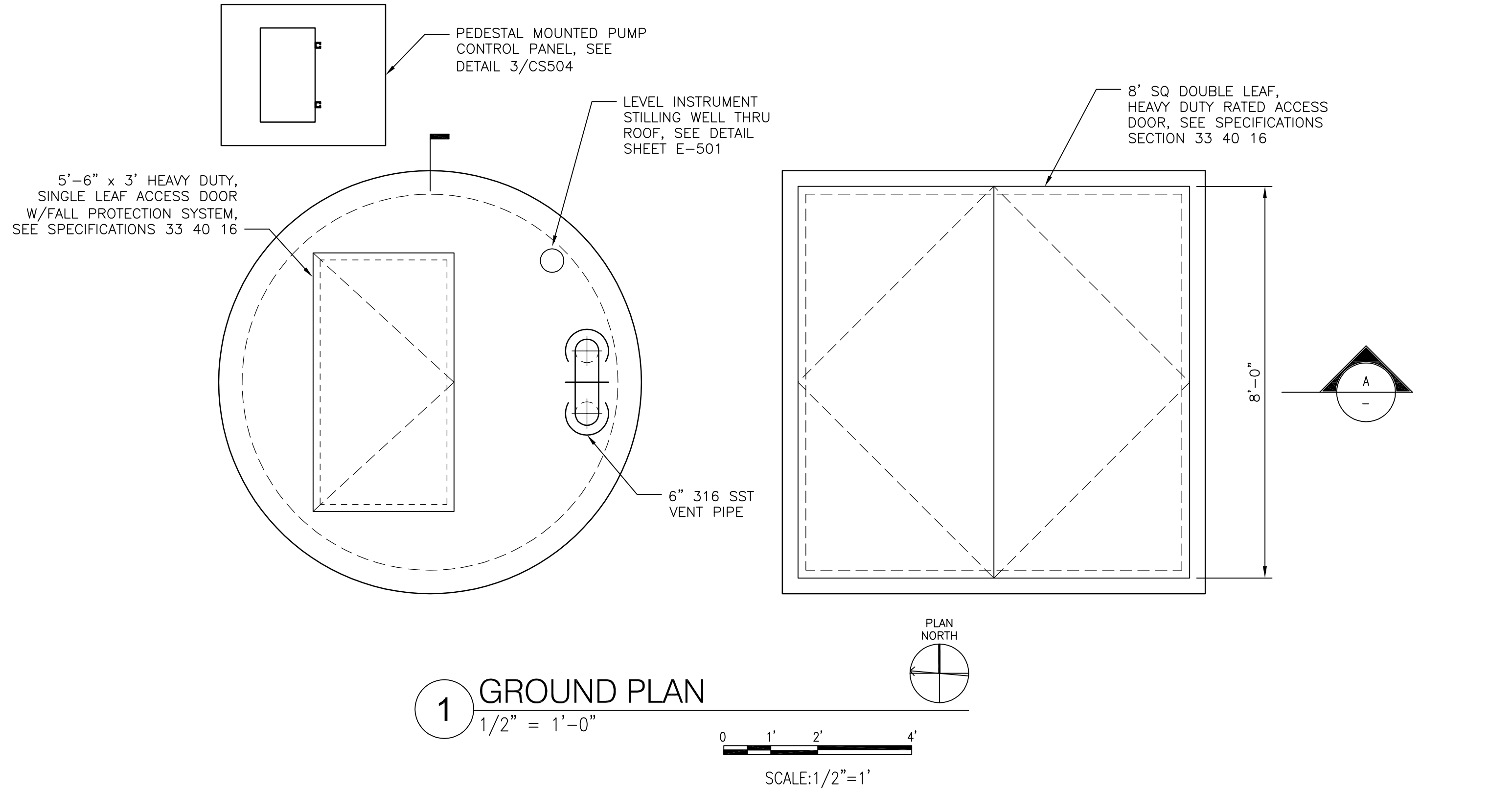
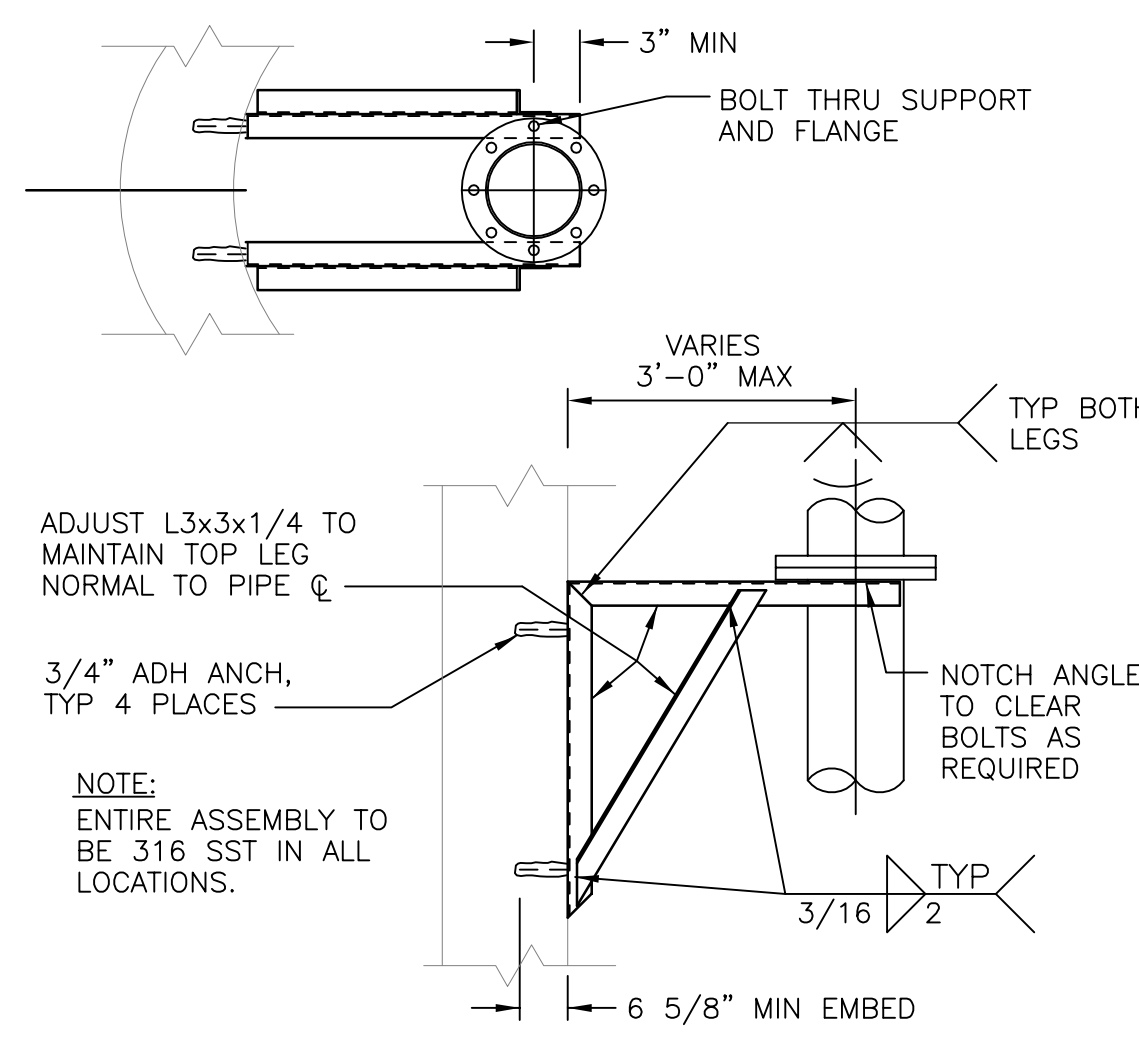
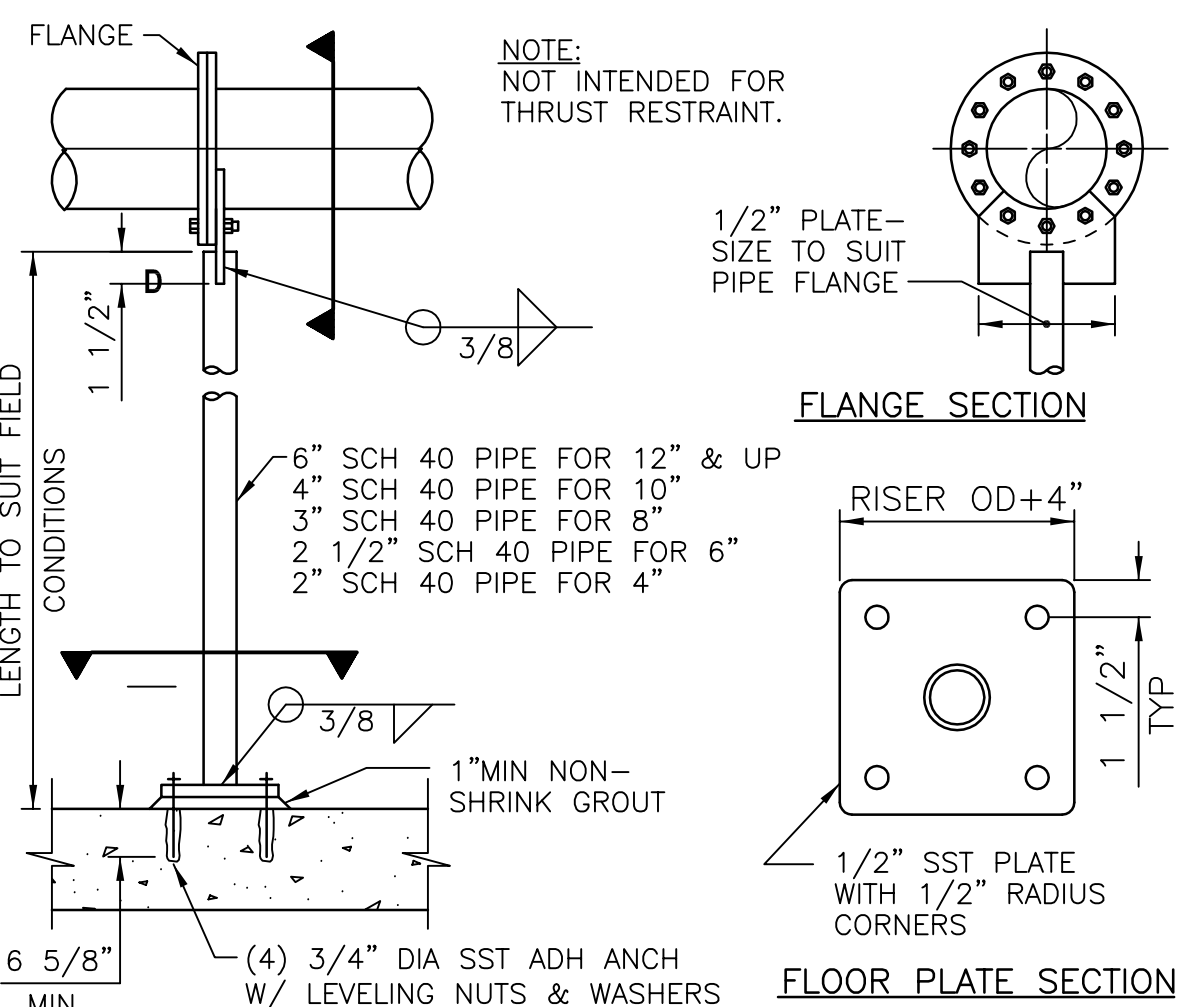
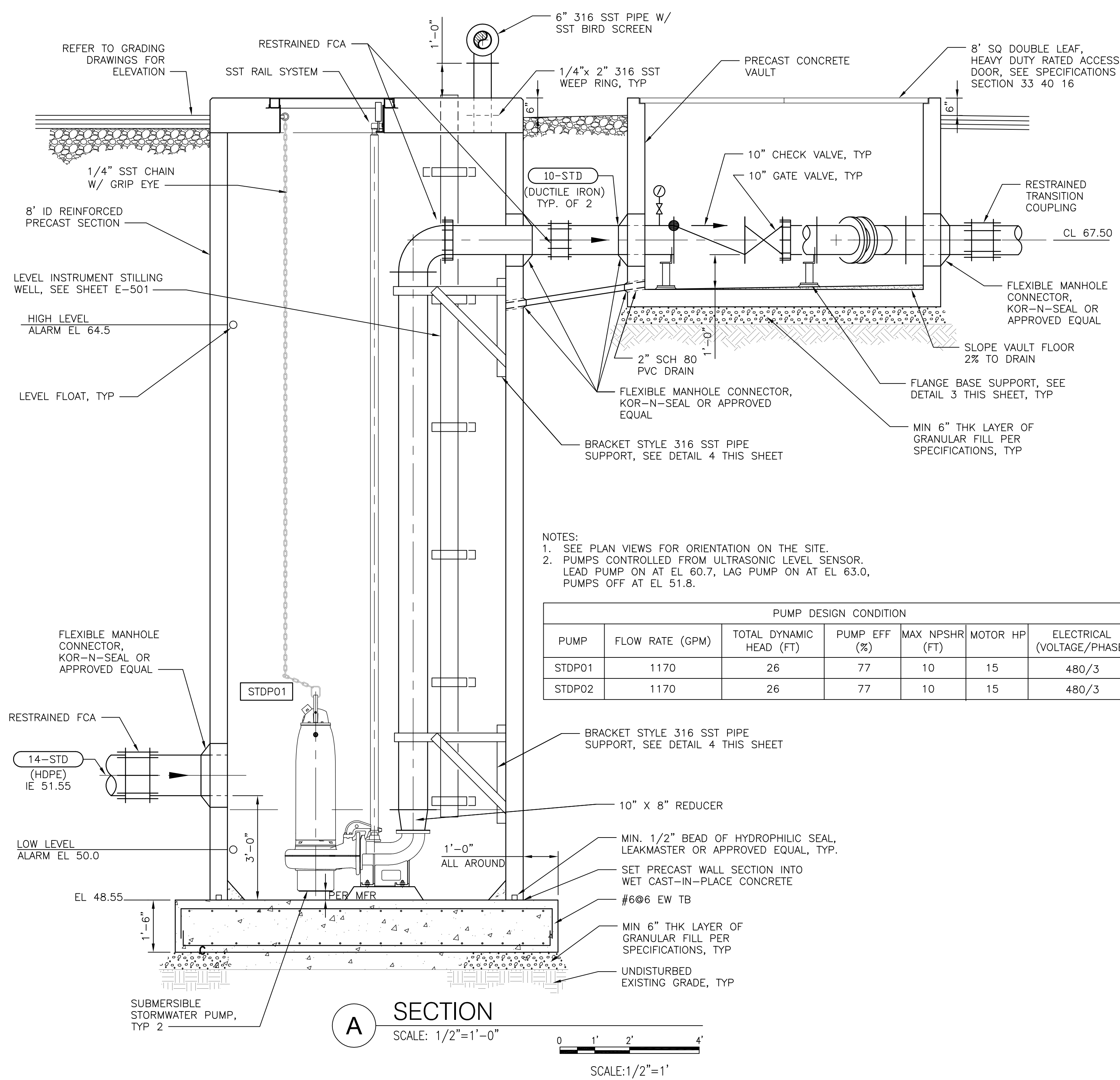


three inches = one foot
one and one-half inch = one foot
one inch = one foot
three-quarters inch = one foot
one-half inch = one foot
three-eighths inch = one foot
one-quarter inch = one foot
one-eighth inch = one foot
one-sixteenth inch = one foot



CONSULTANTS Structural Engineering, Electrical Engineering: HDR Engineering, Inc. 2365 Iron Point Rd. #300 Folsom, CA 95630 (916)-817-4924 Duane Hodgins		Irrigation: Aqua Engineering, Inc. 375 Horseshoe Rd., Bldg. 2-202 Fort Collins, CO 98525 (970)-372-4104 Robert Beccard	Cost Estimating: CPML Inc. 50 Goldenland Cir., Ste. 170 Sacramento, CA 95834 (916)-454-3663 Bryan Bertrand	Geotechnical Engineering: Terracon Consultants, Inc. 50 Goldenland Cir., Ste. 100 Sacramento, CA 95834 (916)-928-4690 Robert Holmer	ARCHITECT/ENGINEER OF RECORD Project Management, Architecture, Landscape Architecture, Cemetery Planning, Civil Engineering, Land Surveying: Anderson Engineering of MN, LLC 13605 1st Ave. N., Ste. 100 Plymouth, MN 55441 (763)-412-4000 Michael Brandvold, Project Manager	STAMP REGISTERED PROFESSIONAL ENGINEER THEODORE H. KONTOMI, ESE NO. M029379 EXP. 6-30-19 MECHANICAL STATE OF CALIFORNIA June 27, 2018	Office of Construction and Facilities Management VA U.S. Department of Veterans Affairs	Drawing Title STORMWATER PUMP STATION NO.1 PLAN AND SECTION Approved: Project Director	Phase BID DOCUMENTS	Project Title Sacramento Valley National Cemetery Phase 2 Development	Project Number 921PC2007 Building Number
Revisions:		Date:		Location 5810 Midway Rd, Dixon, CA 95620		Issue Date June 27, 2018	Checked RGN	Drawn RAA	Drawing Number M-101 255 OF 262		

