

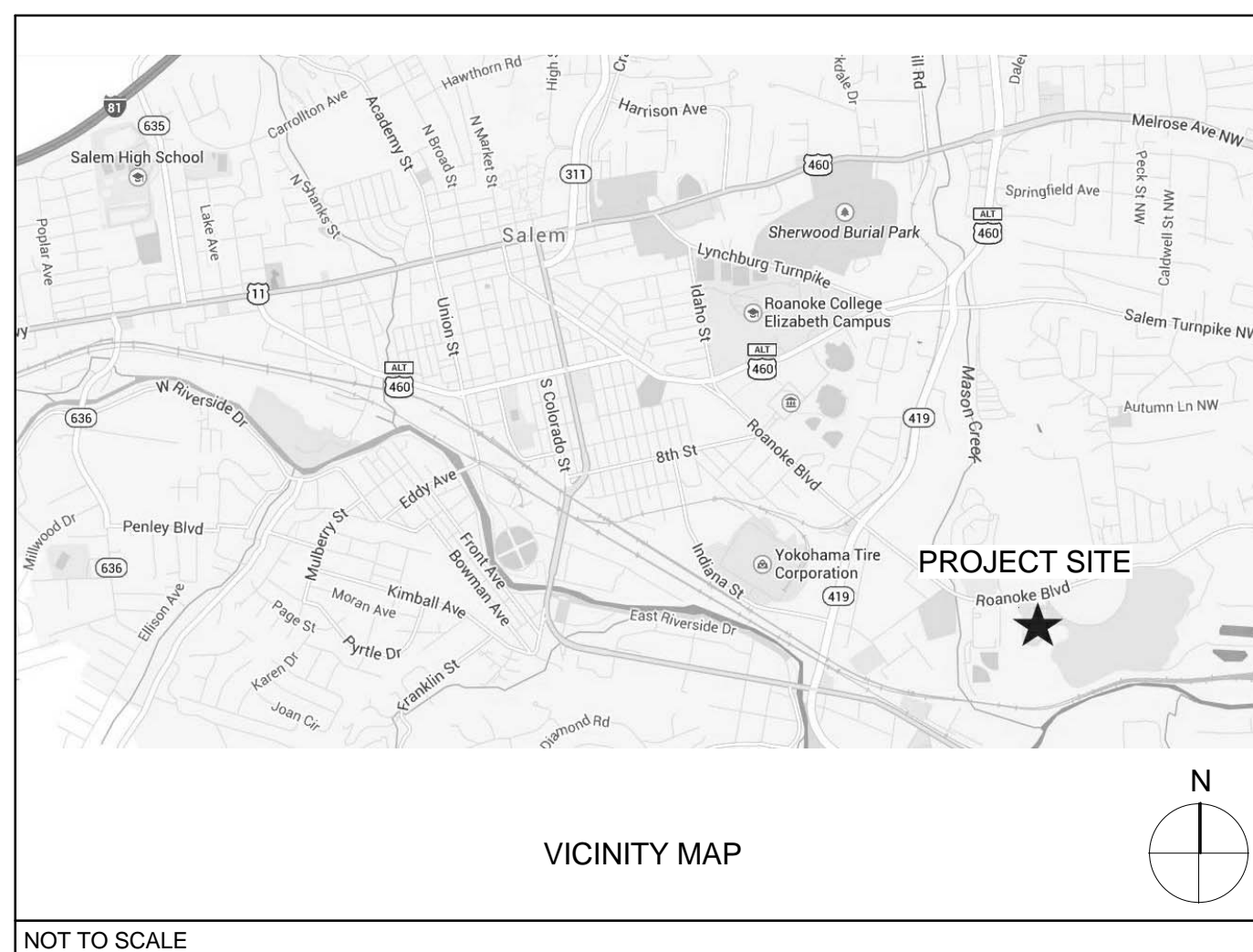


RELOCATE AND EXPAND RENAL DIALYSIS

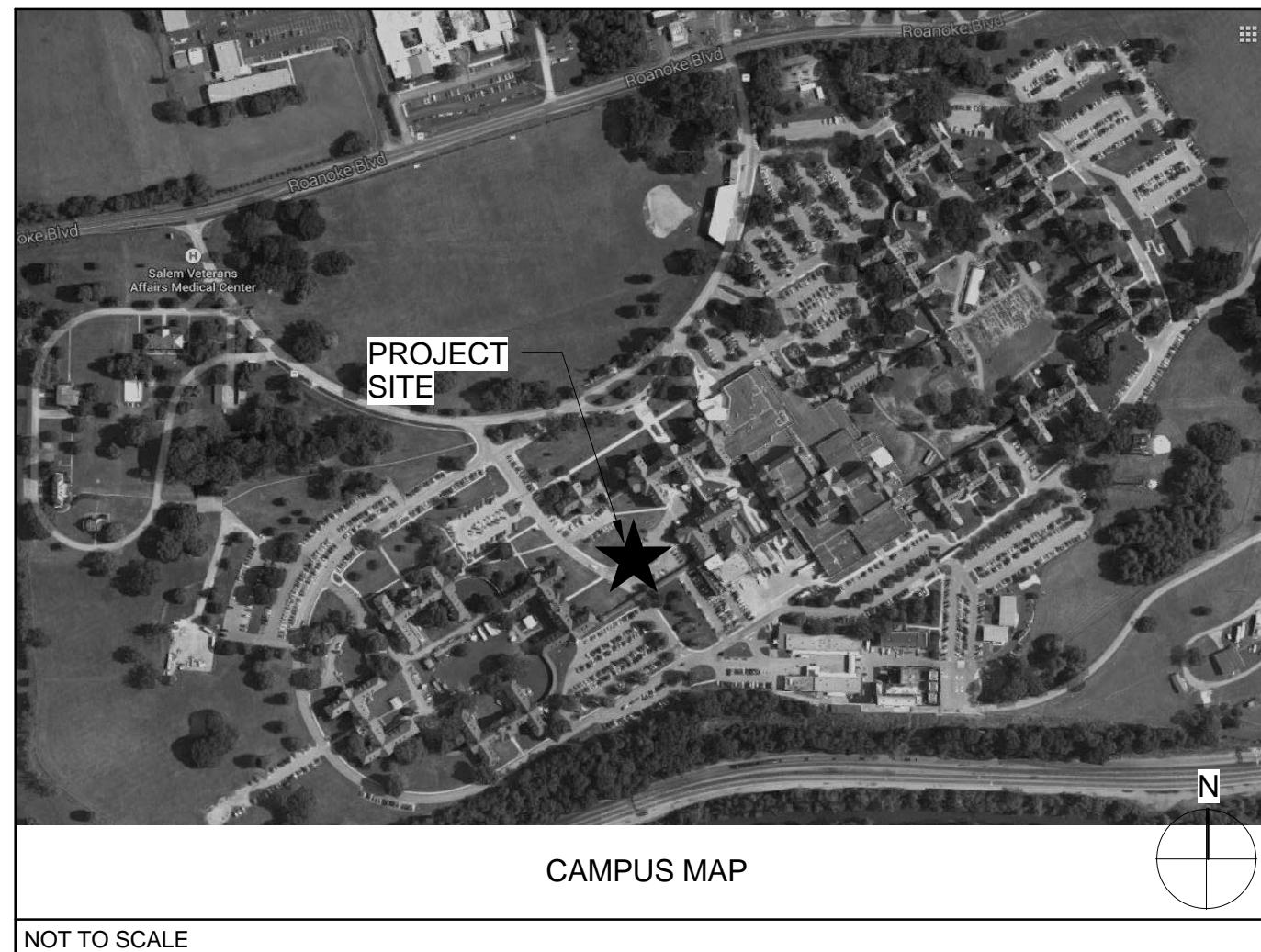
SALEM VETERANS AFFAIRS MEDICAL CENTER

SALEM, VIRGINIA

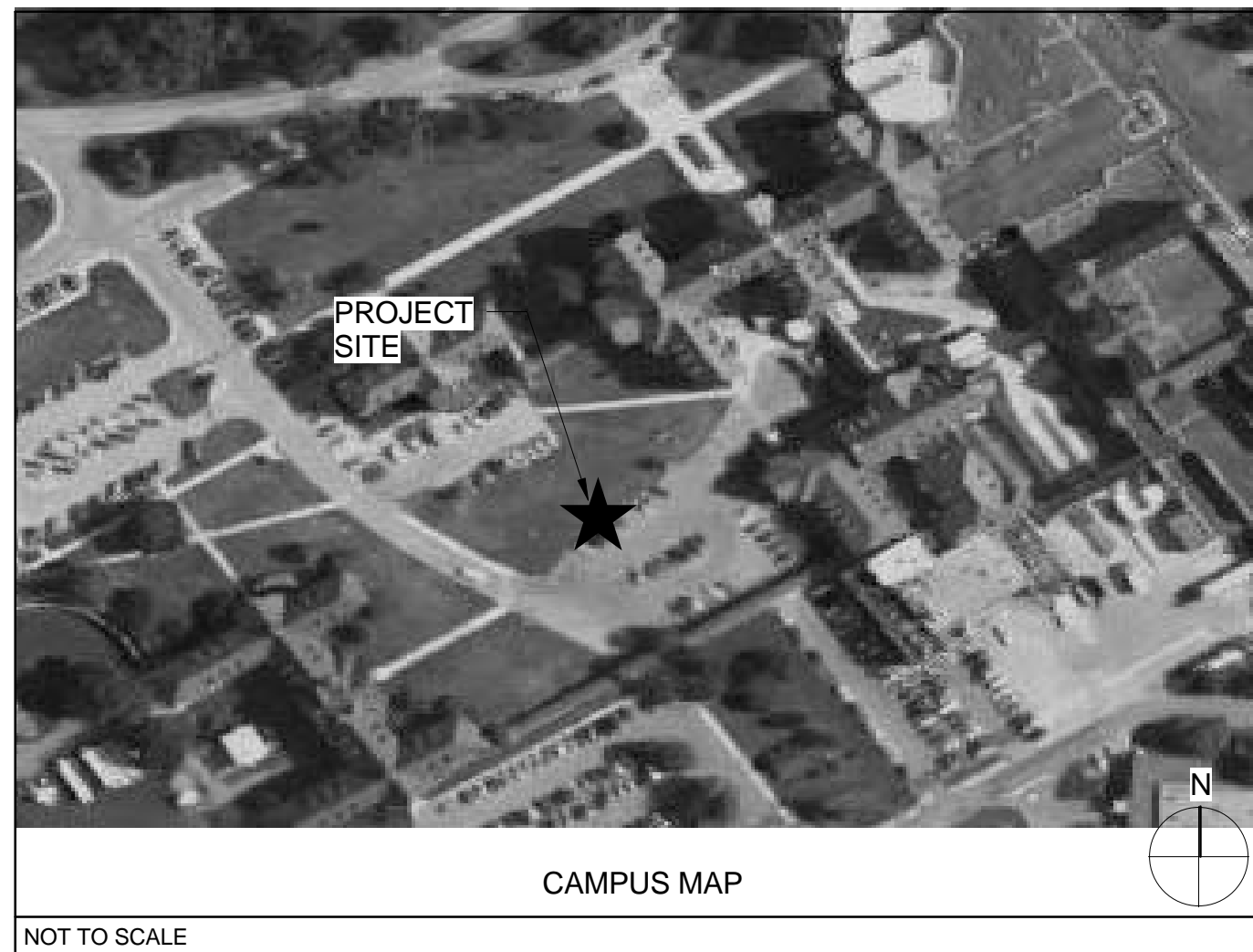
PROJECT NO.: 658-315



NOT TO SCALE



NOT TO SCALE



NOT TO SCALE

DEDUCTIVE ALTERNATES

BASE ITEM 001 (BASE BID): WORK INCLUDES LIMITED SITE DEMOLITION AND NEW CONSTRUCTION OF APPROXIMATELY 11,000 SQ. FT. AND ALL WORK INCLUDED IN DRAWINGS AND SPECIFICATIONS.

- **DEDUCTIVE ALTERNATE 1:** REPLACE EXTERIOR STONE RUBBLE VENEER WITH BRICK VENEER. CONTRACTOR TO ENSURE FLEMISH BOND IS USED FOR BRICK VENEER TO MATCH EXISTING BUILDING.
- **DEDUCTIVE ALTERNATE 2:** OMIT THE EXTERIOR CANOPIES OVER SOUTH AND WEST WINDOWS AT THE DIALYSIS TREATMENT SUITE.
- **DEDUCTIVE ALTERNATE 3:** CHANGE CONCRETE ENCASED DUCT BANK TO DIRECTIONAL BORE, DIRECT BURIED.
- **DEDUCTIVE ALTERNATE 4:** CHANGE LIGHTING PACKAGE FROM LED TO FLUORESCENT.
- **DEDUCTIVE ALTERNATE 5:** SUBSTITUTE 2 HOUR SHAFTWALL CONSTRUCTION IN LIEU OF THE NEW CMU SHOWN AT NORTH WALL, 9F/AE311, WHERE NEW ADDITION MEETS EXISTING CONNECTION. SEE PARTITION TYPES G1002 FOR 2HR ALTERNATE WALL TYPE B26C

PROJECT INFORMATION

PROJECT INFORMATION:
RELOCATE AND EXPAND RENAL DIALYSIS
VISM 6: VA MID-ATLANTIC HEALTH CARE NETWORK
SALEM VETERANS AFFAIRS MEDICAL CENTER
SALEM, VA 24153

PROJECT NUMBER: 658-315

PROJECT INFORMATION:
PROJECT IS FOR AN EXPANDED RENAL DIALYSIS CLINIC WITH OFFICE, EQUIPMENT, AND STORAGE SPACES NECESSARY TO SUPPORT THE FUNCTION OF THE CLINIC AND SUPPORT THE ACTIVITIES OF THE STAFF AND PATIENTS. BUILDING SHALL BE DESIGNED TO PROVIDE STRUCTURAL AND MECHANICAL, ELECTRICAL, PLUMBING INFRASTRUCTURE REQUIREMENTS FOR THREE LEVELS OF EXPANSIONS ABOVE IN THE FUTURE.

THE ADDITION PORTION OF THE PROJECT IS EXCLUSIVELY DEDICATED TO SPACES REQUIRED TO OPERATE THE DIALYSIS CLINIC AND PROVIDE HEMO AND PERITONEAL DIALYSIS SERVICES - TO INCLUDE 14 HEMO-DIALYSIS TREATMENT STATIONS AND A SINGLE PERITONEAL DIALYSIS TRAINING ROOM.

THE RENOVATION AREA IS PRIMARILY DEDICATED TO STAFF SUPPORT SPACES - WITH THE EXCEPTION OF SOME SOILED AND STERILE/CLEAN STORAGE AREAS.

BUILDING SUMMARY:
TOTAL AREA: 11,449 SF (RENOVATION: 2,658 SF NET + ADDITION: 8,431 SF GROSS)

MAIN USE: AMBULATORY HEALTHCARE
SECONDARY USES: ASSEMBLY, BUSINESS

NET AREA BY USE:
RECEPTION: 178 SF
STAFF AND ADMIN: 787 SF
PATIENT TREATMENT/ SUPPORT: 3,417 SF
STAFF SUPPORT: 408 SF
SUPPORT: 1,328 SF
BUILDING SERVICES: 698 SF
CIRCULATION: 3,291 SF (INCLUDING DIALYSIS CIRCULATION: 1,026.71 SF)

SHEET INDEX

Sheet Index	SHEET	TITLE
GENERAL		
1	G1001	TITLE SHEET
2	G1002	PARTITION TYPES / TYPICAL MOUNTING HEIGHTS
3	G1003	STANDARD ABBREVIATIONS
4	G1101	LIFE SAFETY NOTES
5	G1102	LIFE SAFETY PLAN
6	G1111	DEPARTMENTAL USE PLAN
HAZMAT		
7	HA100	HAZARDOUS MATERIAL PLAN
CIVIL		
8	VF101	EXISTING SITE SURVEY
9	CD101	CIVIL SITE PLAN DEMOLITION
10	CS101	CIVIL SITE PLAN NEW WORK
11	CS102	GEOMETRIC PLAN
12	CS501	CIVIL DETAILS
13	CS502	CIVIL DETAILS
14	CS503	CIVIL DETAILS
15	CS504	CIVIL DETAILS
16	CG101	GRADING & DRAINAGE PLAN
17	CG102	STORMWATER POLLUTION PREVENTION PLAN
18	CG501	EROSION AND SEDIMENT CONTROL DETAILS
19	CG801	SOIL BORING LOGS
20	CU101	SITE UTILITY PLAN NEW WORK
21	CU501	UTILITY DETAILS
22	CU502	CIVIL UTILITY DETAILS
LANDSCAPE		
23	LS101	LANDSCAPE PLAN
24	LS102	LANDSCAPE DETAILS
STRUCTURAL		
25	SJ001	STRUCTURAL NOTES
26	SJ002	SCHEDULE OF SPECIAL INSPECTIONS
27	SB101	FOUNDATION PLAN
28	SB102	BASEMENT FLOOR PLAN
29	SF103	LINTEL PLAN
30	SF104	ROOF FRAMING PLAN
31	SF301	FOUNDATION SECTIONS
32	SF501	FRAMING SECTIONS
33	SF502	MISC DETAILS
34	SF503	WALL BRACING
ARCHITECTURAL		
35	AD101	FLOOR PLAN - EXISTING / DEMO
36	AD111	REFLECTED CEILING PLAN - EXISTING / DEMO
37	AD201	EXTERIOR ELEVATIONS - EXISTING/ DEMOLITION
38	AE101	NEW CONSTRUCTION PLAN - OVERALL
39	AE102	ENLARGED FLOOR PLAN - WEST
40	AE103	ENLARGED FLOOR PLAN - EAST
41	AE104	ENLARGED FLOOR PLAN - NURSES STATION
42	AE111	REFLECTED CEILING PLAN - OVERALL
43	AE121	ROOF PLAN
44	AE201	EXTERIOR ELEVATIONS
45	AE301	BUILDING SECTIONS
46	AE311	WALL SECTIONS
47	AE312	WALL SECTIONS
48	AE401	INTERIOR ELEVATIONS - PUBLIC SPACES & TOILET ROOMS
49	AE402	INTERIOR ELEVATIONS - TREATMENT SPACES
50	AE403	INTERIOR ELEVATIONS - TREATMENT SPACES
51	AE404	INTERIOR ELEVATIONS - PATIENT SUPPORT SPACES
52	AE405	INTERIOR ELEVATIONS - PATIENT SUPPORT SPACES
53	AE406	INTERIOR ELEVATIONS - STAFF OFFICE & ADMIN SPACES
54	AE407	INTERIOR ELEVATIONS - STAFF OFFICE & ADMIN SPACES
55	AE501	DETAILS - TYPICAL PARTITION
56	AE502	DETAILS - CEILING / WALL PROTECTION
57	AE503	DETAILS - STOREFRONT
58	AE504	DETAILS - HOLLOW METAL
59	AE505	DETAILS - ROOF
60	AE506	DETAILS - CASEWORK
61	AE507	MISC DETAILS
62	AE601	SCHEDULES

Sheet Index	SHEET	TITLE
INTERIORS		
63	IN101	BASEMENT FLOOR PLAN - FLOOR FINISH
64	IN102	FINISH SCHEDULE
65	IS101	SIGNAGE PLAN
66	IS102	SIGNAGE SCHEDULE
EQUIPMENT		
67	QH101	EQUIPMENT PLAN - OVERALL BASEMENT
68	QH401	ENLARGED EQUIPMENT PLANS - WEST
69	QH402	ENLARGED EQUIPMENT PLANS - EAST
FIRE PROTECTION		
70	FP101	FIRE PROTECTION PLAN
PLUMBING		
71	PP001	PLUMBING LEGENDS AND ABBREVIATIONS
72	PD101	PIPING DEMOLITION PLAN - BASEMENT
73	PL101	DOMESTIC WATER PLAN - BASEMENT
74	PL102	DOMESTIC WASTE AND VENT PLAN - BASEMENT
75	PL103	STORM DRAINAGE PLAN - BASEMENT
76	PL104	STORM DRAINAGE PLAN - BASEMENT ROOF
77	PL401	DOMESTIC WATER ENLARGED PLANS
78	PL402	DOMESTIC WATER AND VENT ENLARGED PLANS
79	PP101	MEDICAL GAS PIPING PLAN - BASEMENT
80	PP102	DIALYSIS PIPING PLAN - BASEMENT
81	PP501	PLUMBING DETAILS
82	PP502	PLUMBING DETAILS
83	PP503	MEDICAL GAS AND DIALYSIS RISER DIAGRAMS
84	PP504	DOMESTIC WATER RISER DIAGRAM
85	PP505	DOMESTIC WASTE AND VENT RISER DIAGRAM
86	PP601	DIALYSIS WATER TREATMENT SYSTEM SCHEMATIC
87	PP602	PLUMBING SCHEDULES
MECHANICAL		
88	MH000	MECHANICAL LEGENDS AND ABBREVIATIONS
89	MD101	MECHANICAL DUCTWORK DEMOLITION PLAN - BASEMENT
90	MD102	MECHANICAL PIPING DEMOLITION - BASEMENT
91	MH101	MECHANICAL DUCTWORK NEW WORK PLAN - BASEMENT
92	MH102	MECHANICAL PIPING NEW WORK PLAN - BASEMENT
93	MH401	ENLARGED MECHANICAL PLANS AND SECTIONS
94	MH501	MECHANICAL DETAILS
95	MH502	MECHANICAL DETAILS
96	MH503	MECHANICAL DETAILS
97	MH504	MECHANICAL DETAILS
98	MH601	MECHANICAL FLOW CONTROL DIAGRAMS
99	MH602	MECHANICAL CONTROL SEQUENCES
100	MH603	MECHANICAL SCHEDULES
101	MH604	MECHANICAL CONTROL DIAGRAMS
102	MH605	CHILLED WATER LOOP PIPING DIAGRAM
103	MH606	CHILLED WATER LOOP CONTROLS DIAGRAM
ELECTRICAL		
104	E1001	LEGEND, NOTES, & ABBREVIATIONS
105	ES101	SITE PLAN - ELECTRICAL
106	ES102	SITE PLAN - TELECOMMUNICATIONS
107	ES103	SITE PLAN - ELECTRICAL POWER
108	EL101	BASEMENT FLOOR PLAN - LIGHTING
109	EP101	BASEMENT FLOOR PLAN - POWER
110	EP102	PARITAL FLOOR PLANS - POWER
111	EP501	DETAILS
112	EP502	DETAILS
113	EP601	SINGLE LINE DIAGRAM
114	EP602	SCHEDULES
115	EP603	SCHEDULES
116	EP604	SCHEDULES
117	EP605	SCHEDULES
TELECOMMUNICATIONS		
118	ET101	BASEMENT FLOOR PLAN - TELECOMMUNICATIONS
119	ET501	DETAILS
120	ET601	SINGLE LINE DIAGRAMS

CONSTRUCTION DOCUMENTS FULLY SPRINKLERED

Revisions:	Date:		Corporate Office: 766 Middle St, Fairhope, AL 36532 Phone: 251.990.5778 Fax: 251.990.3716	Approved: Patient Safety Nurse	Approved: Energy Engineer	Approved: Safety Manager	Approved: Service Chief	Drawing Title TITLE SHEET	Project Title RELOCATE AND EXPAND RENAL DIALYSIS	Date 2018.02.16	Project No. 658-315	Building Number 2	Checked JF	Drawn AEJ	Drawing No. G1001	Location SALEM VA MEDICAL CENTER	Sheet 1 of 120	Veterans Affairs
					Approved: Chief of Police	Approved: Infection Control Officer	Approved: Chief of Staff											
					Approved: Chief of Mental Health Service	Approved: GEMS Coordinator	Approved: Associate Director											

DRAFTING SYMBOLS

1

View Name

1/8" = 1'-0"

00

AE501

DETAIL CALLOUT

00

AE501

DETAIL INDICATOR FOR SMALL CONDITIONS

D2 / AE512

ELEVATION INDICATOR, EXTERIOR

1

AE201

ELEVATION INDICATOR, INTERIOR, MULTIPLE VIEW

4

AE211

2

3

BUILDING SECTION INDICATOR

00

AE201

WALL FINISH INDICATOR

P-01

CASEWORK TAG

BA3034

SECOND NUMBER SET INDICATES UNIT HEIGHT IN INCHES (I.E. 34")

FIRST NUMBER SET INDICATES UNIT WIDTH IN INCHES (I.E. 30")

LETTER PAIR INDICATES CASEWORK FAMILY (SEE SHEET AE511 FOR DETAILS)

SPACE IDENTIFICATION

Room name

1A105

OPENING INDICATOR

1F157B

CEILING HEIGHT INDICATOR

9'-0"

WINDOW INDICATOR

1

EQUIPMENT INDICATOR

JSN

SHEET NOTES

12

5

PARTITION TYPE INDICATOR

A-4A

NORTH ARROW

N

INDICATES PROJECT NORTH

INDICATES TRUE NORTH

DRAWING REVISION INDICATOR

2

ELEVATION INDICATOR

FIRST FLOOR

20' - 6"

TOILET ACCESSORY TAG

XXXX

EXISTING CONSTRUCTION TO REMAIN

EXISTING CONSTRUCTION TO BE REMOVED

NEW CONSTRUCTION

VV ITEM - GOVERNMENT FURNISHED / GOVERNMENT INSTALLED

VC ITEM - GOVERNMENT FURNISHED / CONTRACTOR INSTALLED

CC ITEM - CONTRACTOR FURNISHED / CONTRACTOR INSTALLED

COLUMN LINE INDICATORS

1

INDICATES COLUMN LINE DESIGNATION

A

EXISTING

1

INDICATES COLUMN LINE DESIGNATION

A

NEW

PARTITION TYPES

CONSTRUCT PER LISTED UL DESIGN NO. OR EQUIVALENT UL DESIGN

A

CMU
UL U905
(2 HR)

B

DOUBLE BD
UL U415-B
(2 HR)

C

CMU

D

SINGLE BD
UL U415-A
(1 HR)

E

DOUBLE BD
UL U419
(1 HR)

J

MTL STUDS
SINGLE BD,
BOTH SIDES

K

MTL STUDS
SINGLE BD,
BOTH SIDES
(PARTIAL HT)

L

FURRING / STUDS
SINGLE BD

M

FURRING / STUDS
SINGLE BD
(PARTIAL HT)

N

1. WHERE NO FIRE/SMOKE RATING AND NO ACOUSTIC INSULATION INDICATED, TERMINATE STUDS 4" ABOVE HIGHEST ADJACENT CEILING AND BRACE TOP TRACK AT INTERVALS OF 4'-0" OC (MAX) TO STRUCTURE ABOVE OR ADJACENT.

2. SEE FLOOR PLANS AND INTERIOR ELEVATIONS FOR HEIGHT OF PARTIAL HEIGHT PARTITION ABOVE FINISH FLOOR.

3. BRACE PARTIAL HEIGHT ONE-SIDED PARTITIONS TO ADJACENT PARTITIONS. EXCEPTION: WHEN OVERLAYING RATED WALLS, BRACE NEW STUDS TO STRUCTURE ONLY.

4. OFFSET FURRING / STUD 1" FROM ADJACENT PARALLEL SURFACE / STRUCTURE, UNLESS NOTED OTHERWISE.

5. REFERENCE SHEET 3F/AE501 FOR STRUCTURAL BRACING REQUIREMENTS.

SIMPLE PARTITIONS: VA BIM STANDARDS

INDICATES PARTITION TYPE

INDICATES VARIATION CODE(S)

INDICATES NOMINAL CORE SIZE

INDICATES FIRE/SMOKE RATING (0-4 HRS); _ INDICATES 0 HOURS

COMPOSITE PARTITIONS:

DOUBLE LETTERS INDICATE COMPOSITE PARTITION MADE UP OF OTHER PARTITION TYPES. FOR EXAMPLE KK_4A INDICATES A NON-RATED PARTITION CONSTRUCTED OF TWO (TYPE 'K') SINGLE-SIDED PARTITIONS WITH ACOUSTICAL INSULATION AND A SINGLE LAYER OF GWB ON OUTSIDE FACES

FIRE RATINGS:

0 NON-RATED
1 1-HR RATING
2 2-HR RATING
3 3-HR RATING
4 4-HR RATING

CORE SIZES:

0 7/8" FURRING
1 1-5/8" STUD
2 2-1/2" STUD
4 3-5/8" STUD / CMU
6 5-1/2" STUD / 5-5/8" CMU
8 7-5/8" CMU

VARIATION CODES

a

ACOUSTICAL INSULATION: ACOUSTICAL BLANKET INSUL FULL HT OF PARTITION, PLUS ACOUSTICAL SEALANT BEADS AROUND FULL PERIMETER OF PARTITION. STC RATING OF 40 MINIMUM.

b

ACOUSTICAL INSULATION: ACOUSTICAL BLANKET INSUL FULL HT OF PARTITION, PLUS ACOUSTICAL SEALANT BEADS AROUND FULL PERIMETER OF PARTITION. STC RATING OF 45 MINIMUM

c

SMOKE RESISTANT ASSEMBLY; EXTEND ASSEMBLY TO DECK ABOVE; REF LIFE SAFETY PLANS

d

CEMENTICIOUS BACKER BOARD ON WET WALL / SIDE OF STUD.

e

MOISTURE RESISTANT GYP BD ON HEADWALL SIDE OF PARTITION

TYPICAL PARTITION NOTES

A TESTING AGENCIES FOR THE FIRE ASSEMBLIES IDENTIFIED ON THE PARTITION SCHEDULE ARE:
UL - UNDERWRITERS LABORATORY DESIGN NUMBER
GA - GYPSUM ASSOCIATION DESIGN NUMBER

B PLAN DIMENSIONS ARE TYPICALLY TO GRID LINE, FACE OF STUD, OR FACE OF CONCRETE OR CMU UNLESS NOTED OR INDICATED OTHERWISE. DOORS NOT LOCATED BY PLAN DIMENSIONS ARE LOCATED BY JAMB DETAILS REFERENCED FROM DOOR SCHEDULE. CRITICAL CLEARANCES ARE DESIGNATED 'CLR'.

C THE PARTITION TYPE NOTED BY A SYMBOL CONTINUES BETWEEN CORNERS AND BETWEEN INTERSECTING PARTITIONS. AT OPENINGS, PROVIDE THE SAME PARTITION TYPE ABOVE AND BELOW SUCH OPENING AS THAT ON EITHER SIDE OF THE OPENING. AT PARTITIONS SCHEDULED TO EXTEND TO STRUCTURE ABOVE, EXTEND THE PARTITION AROUND AND ABOVE DUCTS, BEAMS, AND OTHER OBSTRUCTIONS. ALIGN DIFFERENT PARTITION THICKNESSES SO THAT THE FINISHED WALL PLANES CONTINUE UNBROKEN WITHIN EACH ROOM OR CORRIDOR. UNLESS NOTED OTHERWISE, WHERE FACE OF COLUMN FURRING IS SHOWN AS ALIGNING WITH FACE OF PARTITION, CONTINUE PARTITION FACE UNBROKEN PAST THE COLUMN. STANDARD COLUMN FURRING DETAILS LOCATE PARTITION FACE.

D WHERE GYPSUM BOARD IS NOT SCHEDULED TO EXTEND TO BOTTOM OF STRUCTURE, BOARD MAY TERMINATE 4" ABOVE ABUTTED CEILING ON EACH SIDE. IF NO CEILING IS SCHEDULED, BOARD IN THAT ROOM MUST EXTEND FULL HEIGHT.

E WHERE PARTITIONS ARE INDICATED AS BEING FIRE-RATED, CONTINUE PARTITIONS UNBROKEN TO BOTTOM OF DECK ABOVE AND ALONG THE ENTIRE PERIMETER OF THE SPACES BEING SEPARATED BY THE FIRE-RATED PARTITIONS. CONTINUE FIRE-RATED PARTITION SEPARATIONS WITHOUT INTERRUPTION WHERE THEY INTERSECT NON-RATED PARTITIONS.

F WHERE COLUMNS, MECHANICAL CHASES, PIPING, AND OTHER ELEMENTS ARE LOCATED WITHIN A FIRE-RATED PARTITION, CONTINUE THE GYPSUM BOARD AROUND BOTH SIDES OF THE OBSTRUCTION TO MAINTAIN THE RATED ASSEMBLY. FOR DUCT, PIPE, CONDUIT, AND OTHER PENETRATIONS PASSING THROUGH A FIRE-RATED PARTITION, PROVIDE TIGHT FITTING FIRE-RATED STOPPING ASSEMBLIES EQUAL TO ASSEMBLY RATING.

G WHERE SMOKE AND FIRE-RATED PARTITIONS TERMINATE AT EXTERIOR WALLS, FILL VOIDS WITH FIRE-RATED ASSEMBLIES, OR EXTEND TO RATED PARTITIONS TO THE OUTER FACE OF EXTERIOR WALL CONSTRUCTIONS. ENSURE THAT NO FLANKING PATHWAYS EXIST THAT MIGHT PERMIT SMOKE OR FIRE TO FLOW FROM ONE SIDE OF THE PARTITION TO THE OTHER.

H PROVIDE CONTINUOUS STANDARD BLOCKING AS DETAILED FOR WALL MOUNTED ELEMENTS AT TOP AND BOTTOM ATTACHMENT POINTS AND AT INTERMEDIATE ATTACHMENT POINTS AS REQUIRED BY THE ELEMENT, INCLUDING, BUT NOT LIMITED TO: ACCESSORIES, RAILINGS, FLOOR-MOUNTED CASEWORK, CURTAIN RODS, WALL PROTECTION, CORNER GUARDS, AND EQUIPMENT WEIGHING LESS THAN 50 POUNDS.

I PROVIDE HEAVY DUTY BLOCKING AS DETAILED FOR SUPPORT OF HEAVY ELEMENTS, INCLUDING, BUT NOT LIMITED TO: WALL MOUNTED SHELVING AND CABINETRY, HAND RAILS, GRAB BARS, BABY-CHANGING TABLES, LAVATORIES, COUNTER TOPS, MOUNTS FOR TELEVISIONS AND COMPUTER MONITORS, DOOR STOPS, AND EQUIPMENT WEIGHING IN EXCESS OF 50 POUNDS.

J WHERE ACOUSTICAL INSULATION IS INDICATED FOR PARTITIONS, SEAL TOP, BOTTOM AND SIDES OF EACH FACE AND EDGE OF GYPSUM BOARD WITH ACOUSTICAL SEALANT WHERE THE BOARD CONTACTS OTHER MATERIALS.

K BACK-TO-BACK ELECTRICAL BOXES ARE NOT PERMITTED UNLESS BOTH BOXES ARE WRAPPED WITH ADHESIVE WRAPPED INTUMESCENT PUTTY PADS. WHERE JUNCTION, OUTLET, AND SWITCH BOXES OCCUR ON OPPOSITE SIDES OF A PARTITION, EITHER PROVIDE PUTTY PADS FOR BOTH BOXES, OR OFFSET THE BOXES A MINIMUM OF ONE STUD SPACE AND PROVIDE ACOUSTICAL INSULATION BEHIND AND BETWEEN THEM.

L IN FIRE-RATED PARTITIONS WITH TOTAL "BLACK BOX" PENETRATIONS IN EXCESS OF 100 SQ. IN. IN 100 SQ. FT., ADDITIONALLY PROTECT BACK OF BOXES WITH RATED ASSEMBLIES APPROVED BY THE AUTHORITY HAVING JURISDICTION.

M PROVIDE ACOUSTICAL SEALANT AROUND ALL PENETRATIONS THROUGH THE MEMBRANES OF ACOUSTICAL PARTITIONS. PROVIDE FIRE-RATED SEALANT IN LIEU OF ACOUSTICAL SEALANT WHERE REQUIRED TO MAINTAIN FIRE RATING OF ACOUSTIC PARTITIONS.

N IN SHOWER STALLS AND WALLS BEHIND PLUMBING FIXTURES, PROVIDE TILE BACKER BOARD IN LIEU OF GYPSUM BOARD AT WALLS INDICATED TO RECEIVE CERAMIC TILE. BACKER BOARD TO MATCH GYPSUM BOARD IN TERMS OF THICKNESS AND FIRE-RATING CAPABILITY. PROVIDE MOISTURE RESISTANT (MR) GYPSUM BOARD IN LIEU OF STANDARD GYPSUM BOARD AT THE FOLLOWING LOCATIONS: DIRECTLY BEHIND PLUMBING FIXTURES WHERE FINISH IS NOT CERAMIC TILE, AND CEILINGS ABOVE SHOWER STALLS.

O AT NON-FIRE RATED, NON-ACOUSTIC PARTITIONS THAT DO NOT EXTEND TO STRUCTURE ABOVE, CONTRACTOR HAS OPTION OF EXTENDING STUDS TO STRUCTURE ABOVE OR TERMINATING STUDS 4" ABOVE HIGHEST ADJACENT CEILING AND BRACING TOP TRACK AT INTERVALS OF 4'-0" OC (MAX) TO STRUCTURE ABOVE.

P WHERE STUDS EXTEND MORE THAN 3'-0" ABOVE THE GYPSUM BOARD, PROVIDE HORIZONTAL BRACING MIDWAY BETWEEN TOP OF GYPSUM BOARD AND TOP OF STUDS.

Q AT FURRING PARTITIONS (GYPSUM BOARD ONE SIDE ONLY) PROVIDE HORIZONTAL STUD BRACING OR 18 GA ANGLE CLIPS SECURED TO STRUCTURAL SUBSTRATE AT 4'-0" OC (MAX). SIMILAR REQUIREMENT AT COLUMN FURRING.

R MAGNITUDE OF POTENTIAL STRUCTURAL LIVE LOAD DEFLECTION IMPACTING PARTITIONS FOR THIS PROJECT IS 1/2" IN COMPRESSION AND 0" IN EXTENSION, FOR A TOTAL MOVEMENT OF 1/2". FOR RATED PARTITIONS, THE HEAD-OF-WALL FIRE RESISTIVE ASSEMBLY PROVIDED MUST BE RATED FOR THIS DEGREE OF MOVEMENT. PROVIDE A FIRE-RESISTIVE VARIATION FOR EACH CONDITION (BEAMS, DUCTS, CORNERS, ETC.) ENCOUNTERED AT THE RATED PARTITION HEADS. FOR NON RATED PARTITIONS, SECURE THE TOP TRACK IN A MANNER THAT ACCOMMODATES DEFLECTION OF THE STRUCTURE ABOVE OR BELOW.

S FOR DOORS, RELITES, DUCT, AND OTHER OPENINGS WITH ROUGH OPENING DIMENSIONS OF 4'-0" OR WIDER, PROVIDE HEAVY GAUGE KING STUDS AND A "BOX BEAM" HEADER AS DETAILED IN STANDARD OPENING HEADER DETAILS.

T PARTITION TYPE IS TO BE J_4 UNO. ALL FURRING IS TO BE L_2 UNO

EQUIPMENT MOUNTING LEGEND

GB-42

WALL MOUNTED GRABBAR (TOILET SIDE) (A5109)

GB-36

WALL MOUNTED GRABBAR (TOILET REAR) (A5109)

TOILET MOUNTING LOCATION

TPD-1 / TPD-2

TOILET PAPER DISPENSER (A5200)

PTD-1 / PTD-2

WALL MOUNTED PAPER TOWEL DISPENSER (WITH OR WITHOUT INTEGRAL TRASH RECEPTACLE) (A5080)

MR-1

WALL MOUNTED MIRROR (A1066)

MR-2

WALL MOUNTED POSTURE MIRROR

HK-1

WALL MOUNTED ROBE HOOK PAIR (A5145)

SND-1

DISPOSAL, SANITARY NAPKIN, SS, SURFACE MOUNTED (A5090)

SLF-1

SHELF; FOLD DOWN; STAINLESS STEEL (A5162)

CLOCK, ATOMIC, BATTERY OPERATED (F3200)

NOT USED

SS-1

WALL MOUNTED SHOWER SEAT

SD-1 / HSD-1

WALL MOUNTED SOAP DISPENSER HAND SANITIZER DISPENSER RE: 12/A515 FOR SUPPORTS (A5070/A5071)

NOT USED

GB-30SU

SWING UP GRAB BAR

FEC

FIRE EXTINGUISHER IN FULLY RECESSED CABINET, UNLESS OTHERWISE NOTED

NOT USED

RCK-1

MOP BRACKET

BCS-1

WALL MOUNTED LAVATORY

COUNTER MOUNTED LAVATORY

WALL MOUNTED WATER FOUNTAIN (UNLESS OTHER WISE NOTED)

BOARDS, BULLETIN, 48"Wx48"H (F3010)

TELEVISION, FLAT SCREEN (M0500)

TELEVISION, COLOR, BEDSIDE, W/ GRAVITY FREE SUPPORT ARM (M0505)

TV/DVD COMBINATION (M0510)

CONSTRUCTION DOCUMENTS
FULLY SPRINKLERED

Revisions:

Date

BES

DESIGN/BUILD

Corporate Office:
766 Middle St,
Fairhope, AL 36532
Phone: 251.990.5778
Fax: 251.990.3716

Approved: Patient Safety Nurse

Approved: Energy Engineer

Approved: Chief of Police

Approved: Chief of Mental Health Service

Approved: Safety Manager

Approved: Infection Control Officer

Approved: GEMS Coordinator

Approved: Service Chief

Approved: Chief of Staff

Approved: Associate Director

Drawing Title

PARTITION TYPES / TYPICAL MOUNTING HEIGHTS

Project Title

RELOCATE AND EXPAND RENAL DIALYSIS -REDESIGN-

Approved: Chief of Facility Management Svc.

Approved: Medical Center Director

Date

2018.02.16

Project No.

658-315

Drawing No.

G1002

Sheet

2 of 120

Veterans Affairs

VA FORM 08-6231, OCT 1978

A



B



C



D



E



F



STANDARD ABBREVIATIONS

NOT ALL ABBREVIATIONS SHOWN ARE USED

A	A LABEL	CLASS A DOOR	BRCG	BRACING	CU FT	CUBIC FEET	FD	FLOOR DRAIN	HDO	HIGH DENSITY OVERLAY	LVR	LOUVER	OFF	OFFICE	RCVR	RECEIVER	SQ YD	SQUARE YARD
A/C	AIR CONDITIONING		BRDG	BRIDGING	CU IN	CUBIC INCH	FDC	FIRE DEPARTMENT CONNECTION	HDR	HEADER	LWC	LIGHTWEIGHT CONCRETE	OH	OVERHANG	RD	ROAD OR ROOF DRAIN	SS	SANITARY SEWER OR SERVICE SINK
A/C UNIT	AIR CONDITIONING UNIT		BRG	BEARING	CU YD	CUBIC YARD	FDTN	FOUNDATION	HDW	HARDWARE	LWIC	LIGHTWEIGHT INSULATING CONCRETE	OH DR	OVERHEAD (COILING) DOOR	REC	RECESSED	SST	STAINLESS STEEL
A/E	ARCHITECT/ENGINEER		BRGT	BEARING PLATE	CURT	CURTAIN	FE	FIRE EXTINGUISHER	HOWD	HARDWOOD			OPNG	OPENING	RECD	RECEIVED	ST	STAIRS OR STREET
AAMA	AMERICAN ARCHITECTURAL MANUFACTURERS ASSOCIATION		BRKT	BRACKET	CYL	CYLINDER	FEC	FIRE EXTINGUISHER CABINET	HEPA	HIGH EFFICIENCY PARTICULATE AIR (FILTER)			OPP	OPPOSITE	RECT	RECTANGLE	STC	SOUND TRANSMISSION CLASSIFICATION
AB	ANCHOR BOLT		BRZ	BRONZE	FF	FINISH FACE	FF EL	FINISH FLOOR ELEVATION	HEX	HEXAGON	M	MACHINE	OPR	OPERABLE	REF	REFERENCE OR REFRIGERATOR	STIF	STIFFENER
ABA	ARCHITECTURAL BARRIERS ACT		BSMT	BASEMENT	D	DEPTH OR PENNY (NAIL)	FF&E	FURNITURE, FIXTURE, AND EQUIPMENT	HF	HIGH FREQUENCY	MACH	MACHINE ROOM	OPT	OPTIONAL	REFR	REFRACTORY REFRIGERATION OR REFRIGERATION	STL	STEEL
ABC	AGGREGATE BASE COURSE		BTWN	BETWEEN	D LABEL	CLASS D DOOR			HGR	HANGAR	MACH RM	MAINTAIN, MAINTENANCE	OR	OPERATING ROOM OR OUTSIDE			STL JST	STEEL JOIST
AC	ASBESTOS CEMENT OR ASPHALTIC CONCRETE		BU	BUSH	DAT	DATUM			HMD	HOLLOW METAL DOOR	MAN	MANUAL	ORD	ORDNANCE OR OVERFLOW ROOF DRAIN	REG	REGISTER	STL LNTL	STEEL LINTEL
ACI	AMERICAN CONCRETE INSTITUTE		BUR	BUILT-UP ROOFING	DB	DOUBLE			HMD F	HOLLOW METAL DOOR AND FRAME	MATL	MATERIAL	ORIG	ORIGINAL	REIN F	REINFORCE, REINFORCED, OR REINFORCING	STL PL	STEEL PLATE
ACS DR	ACCESS DOOR				DBL	DOUBLE					MATV	MASTER ANTENNA TELEVISION SYSTEM	ORG	ORGANIC			STL RF DK	STEEL ROOF DECK
ACS FLR	ACCESS FLOOR				DBL GLZ	DOUBLE GLAZE							ORN	ORNAMENTAL	REP	REPAIR	STL TB	STEEL TUB
ACS PNL	ACCESS PANEL				DC	DIRECT CURRENT							OSHA	OCCUPATIONAL SAFETY AND HEALTH ADMINISTRATION	REPL	REPLACE	STL TR	STEEL TRUSS
ACST	ACOUSTIC				DEG	DEGREE									REQD	REQUIRED	STOR	STORAGE
ACT	ACOUSTICAL CEILING TILE				DEL	DELETE									RESIL	RESILIENT	STR	STRINGS
AD	AREA DRAIN				DEMO	DEMOLITION									RET	RETURN	STRUCT	STRUCTURAL
ADA	AMERICANS WITH DISABILITIES ACT				DEPT	DEPARTMENT									REV	REVISION	STRUCT	STRUCTURAL STEEL
ADB	AUTOMATIC DOOR BOTTOM				DET	DETAIL									RF	RADIO FREQUENCY	STL	
ADC	AUTOMATIC DOOR CLOSER				DF	DRINKING FOUNTAIN									RFG	ROOFING	SUB	SUBSTITUTE
ADDL	ADDITIONAL				DIA	DIAMETER									RFI	REQUEST FOR INFORMATION	SURF	SURFACE
ADDN	ADDITION				DIAG	DIAGONAL DIAGRAM OR DIAGRAM									RFP	REQUEST FOR PROPOSAL	SUSP	SUSPENDED
ADH	ADHESIVE														RH	RIGHT HAND	SUSP CLG	SUSPENDED CEILING
ADJ	ADJACENT, ADJOINING, OR ADJUSTABLE														RHMS	ROUND HEAD MACHINE SCREW	SV	SHEET VINYL
ADMIN	ADMINISTRATION														RHR	RIGHT HAND REVERSE	SW	SWITCH
AFC	ABOVE FINISHED COUNTER														RHWS	ROUND HEAD WOOD SCREW	SWDR	SWING DOOR
AFF	ABOVE FINISHED FLOOR														RL	ROOF LEADER	SYM	SYMBOL
AFG	ABOVE FINISHED GRADE														RLG	RAILING	SYNTH	SYNTHETIC
AFS	ABOVE FINISHED SLAB														RM	ROOM	SYS	SYSTEM
AGA	AMERICAN GAS ASSOCIATION, ASSOCIATED GENERAL CONTRACTORS														RND	ROUND		
AGGR	AGGREGATE														RO	ROUGH OPENING	T	TREAD
AHJ	AUTHORITY HAVING JURISDICTION														ROW	RIGHT OF WAY	T&G	TONGUE AND GROOVE
AHR	ANCHOR														RPM	REVOLUTIONS PER MINUTE	T&M	TIME AND MATERIALS
AHU	AIR HANDLING UNIT														RS	ROUGH SAWN	TB	THROUGH BOLT OR TOWEL BAR
AIA	AMERICAN INSTITUTE OF ARCHITECTS														RT	RIGHT	TCA	TILE COUNCIL OF AMERICA
AISC	AMERICAN INSTITUTE OF STEEL CONSTRUCTION														RV	ROOF VENT	TCF	TEMPERATURE CONTROL PANEL, OR TRAFFIC CONTROL PLAN
ALT	ALTERNATE, ALTERNATIVE														RWD	REDWOOD	TD	TOWEL DISPENSER
ALT NO	ALTERNATE NUMBER														RWL	RAIN WATER LEADER	TECH	TECHNICAL
ALUM	ALUMINUM														S	SUPPLY AIR	TEEL	TELEPHONE
AMP	AMPERE														SA	SALVAGE	TEMP	TEMPERATURE OR TEMPORARY
AMT	AMOUNT														SALV	SAMPLE	TER	TERRAZZO
ANOD	ANODIZE														SAMP	SANITARY	THD	THREAD
ANSI	AMERICAN NATIONAL STANDARDS INSTITUTE														SAN	SUSPENDED ACOUSTICAL TILE	THK	THERMAL THICKNESS
ANT	ANTENNA														SAT	SUSPENDED ACOUSTICAL TILE CEILING	THRES	THRESHOLD
APA	AMERICAN PLAYWOOD ASSOCIATION														SATC	SPLASH BLOCK	THRU	THROUGH
APPD	APPROVED														SB	STYRENE BUTADIEN STYRENE	THRUOUT	THROUGHOUT
APPROX	APPROXIMATE, APPROXIMATELY														SBS	STRUT	TB	TACKBOARD
APT	APARTMENT														SBSTR	SHADING COEFFICIENT OR SOLID CORE	TLT	TOILET
AR	AS REQUIRED														SC	SCHOOL	TMPD	TEMPERED
ARCH	ARCHITECT, ARCHITECTURAL														SCH	SCHEDULE, SCHEDULED	TMPD GL	TEMPERED GLASS
ASB	ASBESTOS														SCHED	SCHEMATIC	TN	TRUE NORTH
ASI	ARCHITECT'S SUPPLEMENTAL INSTRUCTION														SCHEM	SCUPPER	TO	TOP OF
ASKLR	AUOMATIC SPRINKLER														SCP	SCORNER	TO FDN	TOP OF FOUNDATION
ASPH	ASPHALT														SCRN	SCREEN	TOB	TOP OF BEAM
ASSN	ASSOCIATION														SCT	STRUCTURAL CLAY TILE	TOM	TOP OF MASONRY
ASTM	AMERICAN SOCIETY FOR TESTING AND MATERIALS														SCWD	SOLID CORE WOOD DOOR	TOP	TOP OF PARAPET
ATCH	ATTACHMENT														SD	SHOP DRAWINGS, SMOKE DETECTOR, OR SOAP DISPENSER	TOS	TOP OF STEEL
ATM	AUTOMATIC TELLER MACHINE														SDG	SIDING	TYP	TYPICAL
ATS	AUTOMATIC TRANSFER SWITCH														SECT	SECTION	U	UNLESS NOTED OTHERWISE
AUTO	AUTOMATIC														SEG	SEGMENT	U.O.N.	UNLESS OTHERWISE NOTED
AUX	AUXILIARY														SEL	SELECT		
AV	AUDIO-VISUAL														SEP	SEPARATE		
AVE	AVENUE														SF	SQUARE FOOT (FEET)	V	VA FURNISHED / CONTRACTOR INSTALLED
AVG	AVERAGE														SFTWD	SOFTWOOD	VC	VINYL COMPOSITION TILE OR VITRIFIED GLAY TILE
AW	ACID WASTE														SGD	SLIDING GLASS DOOR	VCT	VINYL COMPOSITION TILE OR VITRIFIED GLAY TILE
AWI	ARCHITECTURAL WOODWORKING INSTITUTE														SGL	SINGLE		
AWPA	AMERICAN WOOD PRESERVERS'S ASSOCIATION														SHR	SHOWER		
AWS	AMERICAN WELDING SOCIETY														SHR HD	SHOWER HEAD	VENT	VENTILATION
AWT	ACOUSTICAL WALL TREATMENT														SHRD	SHOWER DRAIN	VERT	VERTICAL
B	B LABEL	CLASS B DOOR													SHT	SHEET	VIF	VERIFY IN FIELD
B PL	BASE PLATE														SHT MTL	SHEET METAL (FLASHING)	VV	VA FURNISHED / VA INSTALLED
BALC	BALCONY														SHTHG	SHEDDING	W	WITH
BAT	BATTEN														SIM	SIMILAR	WD	WOOD
BB	BULLETIN BOARD														SJ	SCORED JOINT	WP	WALL PROTECTION
BD	BOARD														SJ	SCORED JOINT		
BD FT	BOARD FEET (FOOT)														SJI	STEEL JOIST SLIDING WINDOW		
BEV	BEVEL														SK	SKETCH		
BHMA	BUILDER'S HARDWARE MANUFACTURER'S ASSOCIATION														SKLT	SKYLIGHT		
BI FLD DR	BIFOLDING DOORS														SLD WDW	HORIZONTAL SLIDING WINDOW		
BITUM	BITUMINOUS														SLDG	SLIDING		
BKG	BACKING														SLNT	SEALANT		
BLD	BUILD														SM	SHEET METAL		
BLDG	BUILDING														SMK	SMOKE		
BLKG	BLOCKING														SMS	SHEET METAL SCREW		
BLKT	BLANKET														SND	SANITARY NAPKIN DISPENSER		
BLVD	BOULEVARD														SND INS	SOUND INSULATION		
BM	BEAM OR BENCHMARK														SNDU	SANITARY NAPKIN DISPOSAL UNIT		
BOT	BOTTOM														SPEC	SPECIFICATION		
BR	BEDROOM														SPKLR	SPRINKLER		

CONSTRUCTION DOCUMENTS FULLY SPRINKLERED

Revisions:	Date:	Approved: Patient Safety Nurse	Approved: Energy Engineer	Approved: Safety Manager	Approved: Service Chief	Drawing Title STANDARD ABBREVIATIONS	Project Title RELOCATE AND EXPAND RENAL DIALYSIS -REDESIGN-	Date 2018.02.16	Veterans Affairs	
			Approved: Chief of Police	Approved: Infection Control Officer	Approved: Chief of Staff			Project No. 658-315		
			Approved: Chief of Mental Health Service	Approved: GEMS Coordinator	Approved: Associate Director	Approved: Chief of Facility Management Svc.	Building Number 2	Checked RP		Drawing No. G1003
						Approved: Medical Center Director	Location SALEM VA MEDICAL CENTER	Drawn JDB		Sheet 3 of 120

A

three inches = one foot
6"
1

B

one and one half inches = one foot
6"
0
2

C

one inch = one foot
6"
0
2

D

three quarters inch = one foot
6"
0
4

E

one half inch = one foot
6"
0
4

F

three eighths inch = one foot
6"
0
8
4

one eighth inch = one foot
6"
0
8
4
16

CODE NOTES:

THE VA FIRE PROTECTION DESIGN MANUAL, SIXTH EDITION, SEPTEMBER 2011, SECTION 1.3(D) REQUIRES THAT WHERE DESIGN FEATURES ARE ADDRESSED BY BOTH THE IBC AS WELL AS NFPA 101 OR A DOCUMENT REFERENCED BY NFPA 101, THE REQUIREMENTS OF NFPA 101 OR THE DOCUMENT REFERENCED BY NFPA 101 SHALL BE USED EXCLUSIVELY (THIS APPLIES EVEN IF THE IBC REQUIREMENTS ARE DIFFERENT). HENCE THE CONSTRUCTION TYPE IS DETERMINED BY NFPA 101 TABLE 20.1.6.1. THE BUILDING IS FULLY SPRINKLERED AND THE STORIES IN HEIGHT IS CURRENTLY ONE BUT A FUTURE ADDITION WILL CREATE A MAXIMUM OF THREE NEW STORIES OR FOUR STORIES TOTAL IN HEIGHT.

OCCUPANCY TYPE: CURRENT FLOOR - AMBULATORY HEALTH CARE, NFPA 101 CHAPTER 20
FUTURE FLOOR 1 - DENTAL CLINIC, BUSINESS CHAPTER 38
FUTURE FLOORS 2 & 3 - NURSING HOME, CHAPTER 20 HEALTH CARE

NEW ADDITION CONSTRUCTION TYPE - II (222), BASED ON FLUTURE FLOORS
EXISTING BUILDING CONSTRUCTION TYPE - II (222)

PROJECT AREA - 13,014 SF (EXISTING 2,848 SF, NEW 10,166 SF)

FIRE RESISTANCE OF STRUCTURAL ELEMENTS, IBC TABLE 601:
PRIMARY STRUCTURAL FRAME 2-HR
BEARING WALLS 2-HR
FLOOR & ASSOCIATED SECONDARY MEMBERS 2-HR
ROOF OF FUTURE FLOOR 3 1-HR**
** 2-HR IS NEEDED BETWEEN CURRENT FLOOR AND FUTURE FLOORS 1, 2 AND 3

OCCUPANCY SEPARATION - 2-HR (OCCUPANCY SEPARATION BETWEEN EXISTING HEALTH CARE AND NON-HEALTH CARE)

THE BUILDING IS FULLY SPRINKLERED PER THE VA FIRE PROTECTION DESIGN MANUAL, NFPA 101 AND NFPA 13.

PROTECTION FROM HAZARDS:
STORAGE ROOMS OVER 100 SF - 1-HR
STORAGE ROOMS OVER 50 SF BUT LESS THAN 100 SF REQUIRE AUTOMATIC DOOR CLOSERS.
EACH AREA SHALL HAVE AT LEAST TWO SMOKE ZONES, EACH NOT TO EXCEED 22,500 SF
SMOKE ZONES SHALL BE SEPARATED BY 1-HR FIRE AND SMOKE BARRIERS

OCCUPANT LOAD FACTOR PER NFPA 101 TABLE 7.3.1.2 = 100 SF

OCCUPANT LOAD = 10,330 SF / 100 SF PER PERSON = 103 PERSONS

EGRESS CAPACITY REQUIRED = 103 PERSONS x 0.2 INCHES PER PERSON = 20.6 INCHES.
MINIMUM CORRIDOR SIZE = 44 INCHES
MINIMUM DOOR SIZE = 32 INCHES CLEAR
MINIMUM NUMBER OF EXITS = 2
PROVIDED SEE DRAWING G1102

2-HOUR FIRE BARRIER

THIS APPLIES TO OCCUPANCY SEPARATION WALLS, HORIZONTAL EXITS, AND STAIRWELLS OF 4 OR MORE STORIES.

WALL CONSTRUCTION: WALL EXTENDS FROM FLOOR TO DECK ABOVE.

DUCTS: ALL DUCT PENETRATIONS ARE PROTECTED BY FIRE DAMPERS.

PENETRATIONS: ALL PENETRATIONS ARE SEALED WITH LISTED FIRESTOP MATERIALS FOR PROTECTING 2-HOUR WALL ASSEMBLIES. PENETRATIONS ARE TO BE FILLED ON BOTH SIDES OF THE WALL.

DOORS: ALL DOORS REQUIRE THE FOLLOWING:
1. LABELED FRAMES (NFPA 80 6.3.1.1)
2. LABELED 1 1/2 HOUR DOOR (NFPA 80 4.3.1)
3. MAXIMUM 100 SQ. IN. WINDOW (NFPA 80 4.4.5)
4. POSITIVE LATCHING (NFPA 80 6.4.1.4)
5. SELF CLOSING OR AUTOMATIC CLOSING (NFPA 80 6.4.1.1)
6. COORDINATING DEVICES REQUIRED (NFPA 80 6.4.1.2.1)
7. MAXIMUM 1/8" GAP (NFPA 80 6.3.1.7.1)
8. MAXIMUM 3/4" UNDERCUT (NFPA 80 4.8.4.1)
9. MAXIMUM 16" PROTECTIVE PLATE (NFPA 80 6.4.5)
10. SWING IN PRIMARY DIRECTION OF TRAVEL (NFPA 101 18/19.2.2.2).

1-HOUR FIRE BARRIER

THIS APPLIES TO 1-HOUR RATED ENCLOSURES, HAZARDOUS ROOMS AND STAIRWELLS 3 STORIES OR LESS.

WALL CONSTRUCTION: WALL EXTENDS FROM FLOOR TO DECK ABOVE.

DUCTS: STEEL DUCT PENETRATIONS NOT REQUIRED TO BE PROTECTED BY FIRE DAMPERS.

PENETRATIONS: ALL PENETRATIONS ARE SEALED WITH LISTED FIRESTOP MATERIALS FOR PROTECTING 1-HOUR WALL ASSEMBLIES. PENETRATIONS ARE TO BE FILLED ON BOTH SIDES OF THE WALL.

DOORS: ALL DOORS REQUIRE THE FOLLOWING:
1. LABELED FRAMES (NFPA 80 6.3.1.1)
2. LABELED 3/4 OR 1-HOUR DOOR (NFPA 80 4.3.1)*
3. MAXIMUM 100 SQ. IN. WINDOW (NFPA 80 4.4.5)
4. POSITIVE LATCHING (NFPA 80 6.4.1.4)
5. SELF CLOSING OR AUTOMATIC CLOSING (NFPA 80 6.4.1.1)
6. COORDINATING DEVICES REQUIRED (NFPA 80 6.4.1.2.1)
7. MAXIMUM 1/8" GAP (NFPA 80 2-3.1.7)
8. MAXIMUM 3/4" UNDERCUT (NFPA 80 4.8.4.1)
9. MAXIMUM 16" PROTECTIVE PLATE (NFPA 80 6.4.5)
10. SWING IN PRIMARY DIRECTION OF TRAVEL (NFPA 101 18/19.2.2.2).

* 1-HOUR DOORS ARE REQUIRED IN STAIRWELLS THAT ARE 3 STORIES OR LESS.

1-HOUR FIRE AND SMOKE BARRIER

THIS APPLIES TO 1-HOUR RATED ENCLOSURES, HAZARDOUS ROOMS, AND NEWLY CONSTRUCTED SMOKE WALLS. THIS COMBINATION WALL IS ALSO USED WHERE A PORTION OF THE 1-HOUR WALL OF A RATED ROOM IS ALSO PART OF A SMOKE WALL.

WALL CONSTRUCTION: WALL EXTENDS FROM FLOOR TO DECK ABOVE.

DUCTS: ALL DUCT PENETRATIONS ARE PROTECTED BY SMOKE DAMPERS. SMOKE DAMPERS ARE NOT REQUIRED WHERE ADJACENT SMOKE COMPARTMENTS ARE PROTECTED BY QUICK RESPONSE SPRINKLERS THROUGHOUT EACH COMPARTMENT.

PENETRATIONS: ALL PENETRATIONS ARE SEALED WITH LISTED FIRESTOP MATERIALS FOR PROTECTING 1-HOUR FIRE AND SMOKE WALL ASSEMBLIES. PENETRATIONS ARE TO BE FILLED ON BOTH SIDES OF THE WALL.

DOORS: ALL DOORS FOR HAZARDOUS ROOMS REQUIRE THE FOLLOWING:
1. LABELED FRAMES (NFPA 101 18.3.2.1)
2. LABELED 3/4 HOUR DOOR (NFPA 80 4.3.1)
3. MAXIMUM 100 SQ. IN. WINDOW (NFPA 80 4.4.5)
4. POSITIVE LATCHING (NFPA 80 6.4.1.4)
5. SELF CLOSING OR AUTOMATIC CLOSING (NFPA 80 6.4.1.1)
6. COORDINATING DEVICES REQUIRED (NFPA 80 6.4.1.2.1)
7. MAXIMUM 1/8" GAP (NFPA 80 6.3.1.7.1)
8. MAXIMUM 3/4" UNDERCUT (NFPA 80 4.8.4.1)
9. MAXIMUM 16" PROTECTIVE PLATE (NFPA 80 6.4.5)
10. SWING IN PRIMARY DIRECTION OF TRAVEL (NFPA 101 18/19.2.2.2).

ALL DOORS FOR SMOKE BARRIERS REQUIRE THE FOLLOWING:
1. NON-LABELED FRAME.
2. 20 MINUTE OR SOLID WOOD CORE (NFPA 101 18.3.7.6)
3. CONSULT AHJ AND LOCAL BUILDING CODES FOR WINDOW SIZE (NFPA 80 17.2.2)
4. POSITIVE LATCHING NOT REQUIRED (NFPA 101 19.3.7.8)
5. SELF CLOSING OR AUTOMATIC CLOSING (NFPA 101 18.3.7.8)
6. MAXIMUM 1/8" GAP (NFPA 101 18.3.7.8)
7. MAXIMUM 1" UNDERCUT (NFPA 101 18.3.6.3.1)
8. UNLIMITED IN HEIGHT PROTECTIVE PLATE (NFPA 101 18.3.7.6)
9. A DIRECTION OPPOSITE FROM THE OTHER (NFPA 101 18.3.7.6)

HAZARDOUS ROOMS

WALL CONSTRUCTION: WALLS EXTEND FROM FLOOR TO DROP CEILING IF SPRINKLERED OR
UP TO DECK IF NO CEILING IN THE SPRINKLERED ROOM.

DUCTS: STEEL DUCT PENETRATIONS ARE NOT REQUIRED TO BE PROTECTED BY FIRE DAMPERS OR SMOKE DAMPERS.

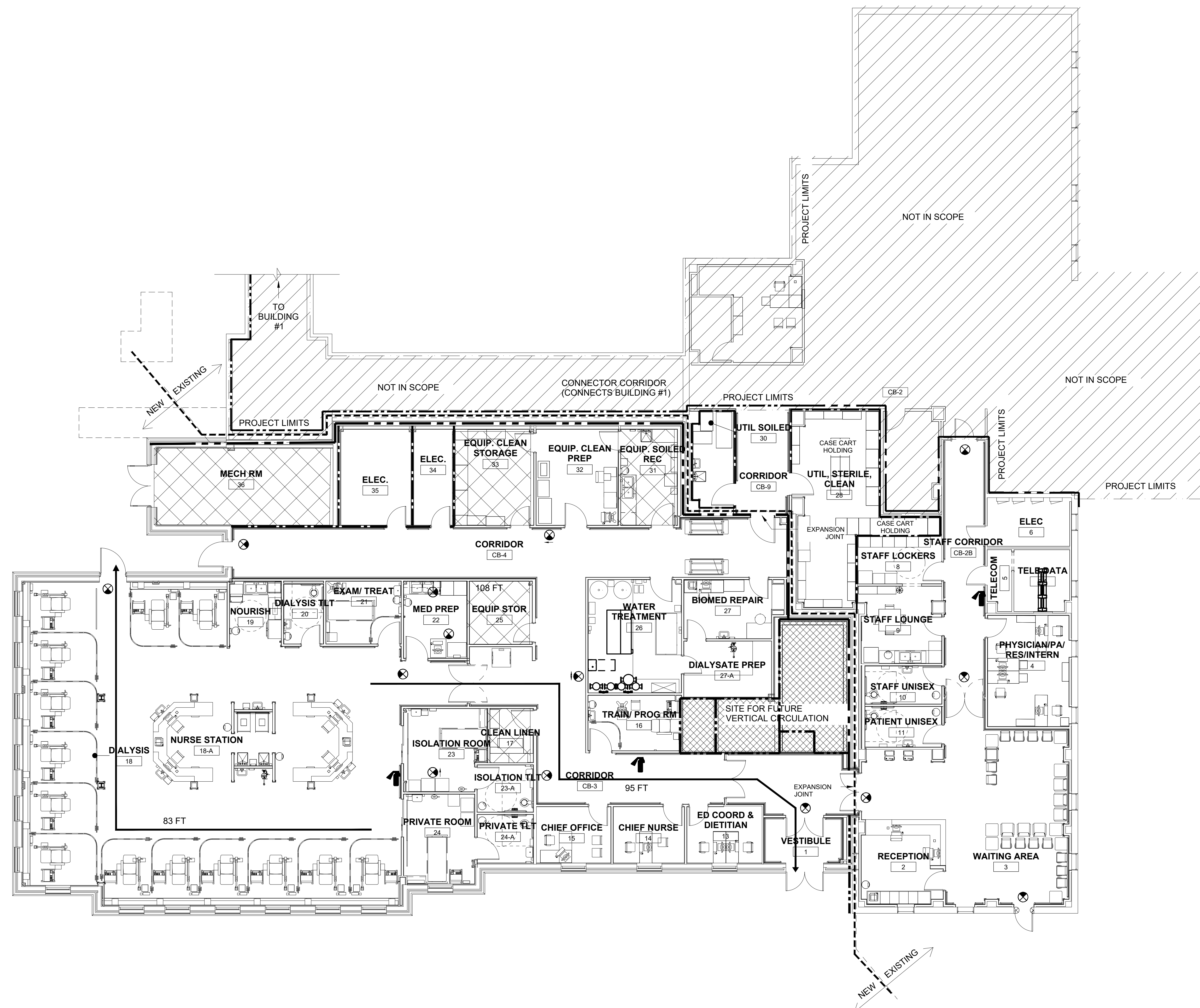
PENETRATIONS: ALL PENETRATIONS ARE SEALED TO RESIST THE PASSAGE OF SMOKE.

DOORSS: NON-RATED SELF CLOSING AND LATCHING DOORS ARE REQUIRED.

CONSTRUCTION DOCUMENTS
FULLY SPRINKLERED

Revisions:	Date	<div><div><div>BES</div><div>DESIGN/BUILD</div></div><div>Corporate Office: 766 Middle St, Fairhope, AL 36532 Phone: 251.990.5778 Fax: 251.990.3716</div><div><div><div>COMMUNITY HEALTH OF ALABAMA</div><div>LIC. NO. 032112</div><div><div><div></div><div>2/16/18</div></div></div></div></div></div>	Approved: Patient Safety Nurse	Approved: Energy Engineer	Approved: Safety Manager	Approved: Service Chief	Drawing Title LIFE SAFETY CODE REVIEW	Project Title RELOCATE AND EXPAND RENAL DIALYSIS	Date 2018.2.16	<div>Veterans Affairs</div>		
				Approved: Chief of Police	Approved: Infection Control Officer	Approved: Chief of Staff	Approved: Chief of Facility Management Svc.	Building Number 2	Checked		Drawn	Project No. 658-315
				Approved: Chief of Mental Health Service	Approved: GEMS Coordinator	Approved: Associate Director	Approved: Medical Center Director	Location SALEM VA MEDICAL CENTER	Drawing No. G1101		Sheet 4 of 120	

A
three inches = one foot
1
one and one half inches = one foot
2
one inch = one foot
three quarters inch = one foot
D
one half inch = one foot
E
three eighths inch = one foot
F
one quarter inch = one foot
one eighth inch = one foot

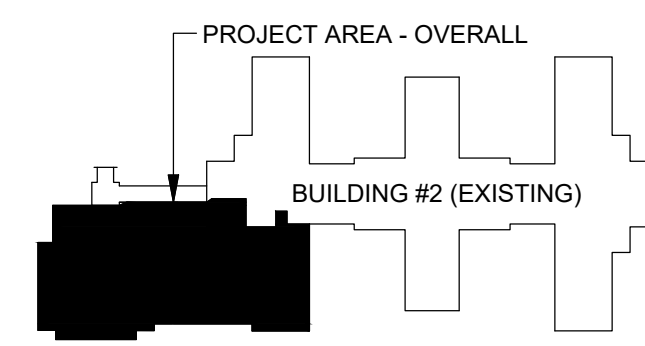


WALL LEGEND	
NOTE: NOT ALL TYPES SHOWN ARE USED ON EACH SHEET	
LINETYPE	DESCRIPTION
	1-HR FIRE WALL
	2-HR FIRE WALL
	PROJECT LIMITS
	NEW / EXIST. BUILDING OUTLINE
	EGRESS DISTANCE
	HAZARDOUS AREA

LIFE SAFETY LEGEND	
SYMBOL	DESCRIPTION
	EXIT SIGN - DIRECTIONAL
	EXIT SIGN
	FIRE EXTINGUISHER

SHEET NOTES	
1	
2	
3	

LIFE SAFETY NOTES	
OCCUPANCY: NEW AREA: AMBULATORY HEALTH CARE, NFPA 101, CHAPTER 20 EXISTING: HEALTH CARE, NFPA 10,1 CHAPTER 18	
NEW ADDITION CONSTRUCTION TYPE: NFPA TYPE II (222), IBC TYPE 1B	
EXISTING BUILDING CONSTRUCTION NFPA TYPE II (222), IBC TYPE 1B	
OCCUPANCY SEPARATION WALL: 2-HOUR FIRE RATED	
NEW AREA: 10,330 SF GROSS	
OCCUPANT LOAD FACTOR: 100 GROSS SF PER OCCUPANT	
OCCUPANT LOAD: 10,330 SF / 100 SF = 103 OCCUPANTS	
EGRESS LIMITS: MAX DEAD END - 30 FT (w/SPRINKLERS) MAX COMMON PATH - 100 FT MAX TRAVEL DISTANCE - 200 FT	
NUMBER SMOKE ZONES REQUIRED = 2 MAXIMUM SIZE = 22,500 SF ACTUAL SIZE = 9,588 SF	
THE EXISTING BUILDING PORTION OF THE NEW RENAL AREA IS A PART OF AN EXISTING SMOKE ZONE. THE NEW ADDITION PORTION OF THE NEW RENAL AREA IS A NEW SMOKE ZONE.	











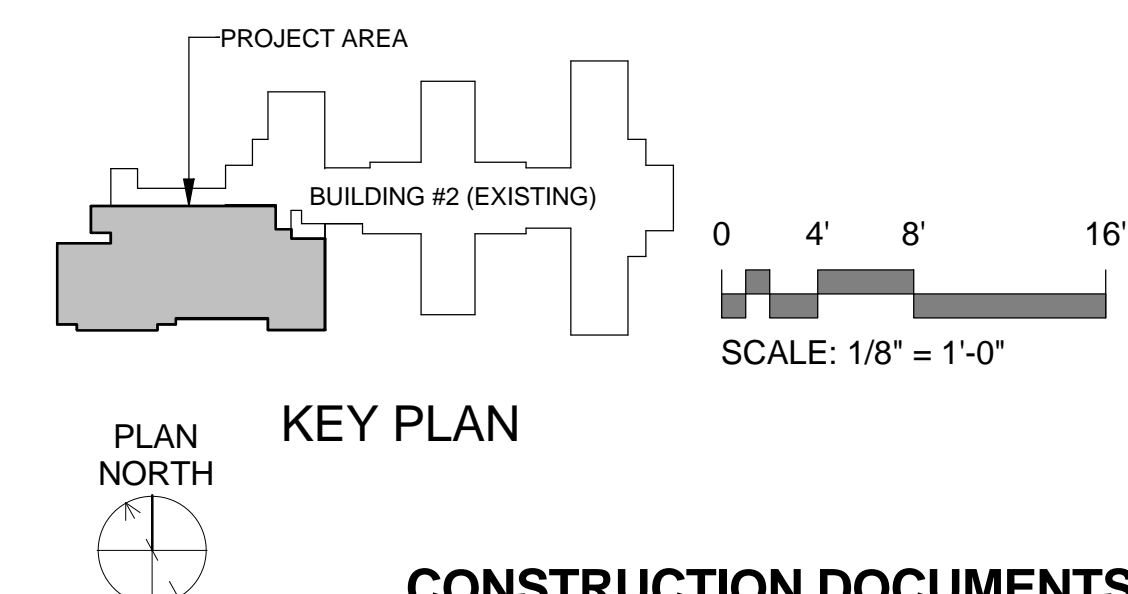
0 4' 8' 16'
SCALE: 1/8" = 1'-0"

Revisions:	Date	 Corporate Office: 766 Middle St, Fairhope, AL 36532 Phone: 251.990.5778 Fax: 251.990.3716		Approved: Patient Safety Nurse	Approved: Energy Engineer	Approved: Safety Manager	Approved: Service Chief	Drawing Title LIFE SAFETY PLAN	Project Title RELOCATE AND EXPAND RENAL DIALYSIS	Date 2018.2.16	Veterans Affairs
				Approved: Chief of Police	Approved: Infection Control Officer	Approved: Chief of Staff	Approved: Chief of Facility Management Svc.			Building Number 2	
				Approved: Chief of Mental Health Service	Approved: GEMS Coordinator	Approved: Associate Director	Approved: Medical Center Director	Location SALEM VA MEDICAL CENTER	Drawing No. G1102	Sheet 5 of 120	




ROOM LEGEND

	1 - RECEPTION AREAS
	2 - STAFF AND ADMIN AREAS
	3 - PATIENT TREATMENT AREAS
	4 - PATIENT SUPPORT AREAS
	5 - STAFF SUPPORT AREAS
	6 - SUPPORT AREAS
	7 - BUILDING SERVICES AREAS
	8 - CIRCULATION AREAS



LEVEL 1 DEPARTMENTAL GROSS SF - 12,457 SF
DEPARTMENTAL GROSS SQUARE FOOTAGE
SHOWN ACCOUNTS FOR CORRIDORS,
MECHANICAL SPACES, WALL THICKNESSES, ETC.

**CONSTRUCTION DOCUMENTS
FULLY SPRINKLERED**

8/9/2018 11:05:48 PM		 <p>Corporate Office: 766 Middle St. Fairhope, AL 36532 Phone: 251.990.5778 Fax: 251.990.3716</p>	Approved: Patient Safety Nurse		Approved: Energy Engineer		Approved: Safety Manager		Approved: Service Chief		Drawing Title DEPARTMENTAL USE PLAN		Project Title RELOCATE AND EXPAND RENAL DIALYSIS		Date 2018.02.16	Veterans Affairs		
						Approved: Chief of Police		Approved: Infection Control Officer		Approved: Chief of Staff				Project No. 658-315				
												Approved: Chief of Facility Management Svc.		Building Number 2			Checked JF	Drawn A EJ
														Drawing No.				
												Approved: Medical Center Director		Location SALEM VA MEDICAL CENTER			G111	
														Sheet 6 of 120				
Revisions:		Date																

A

B

C

D

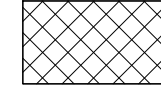
E

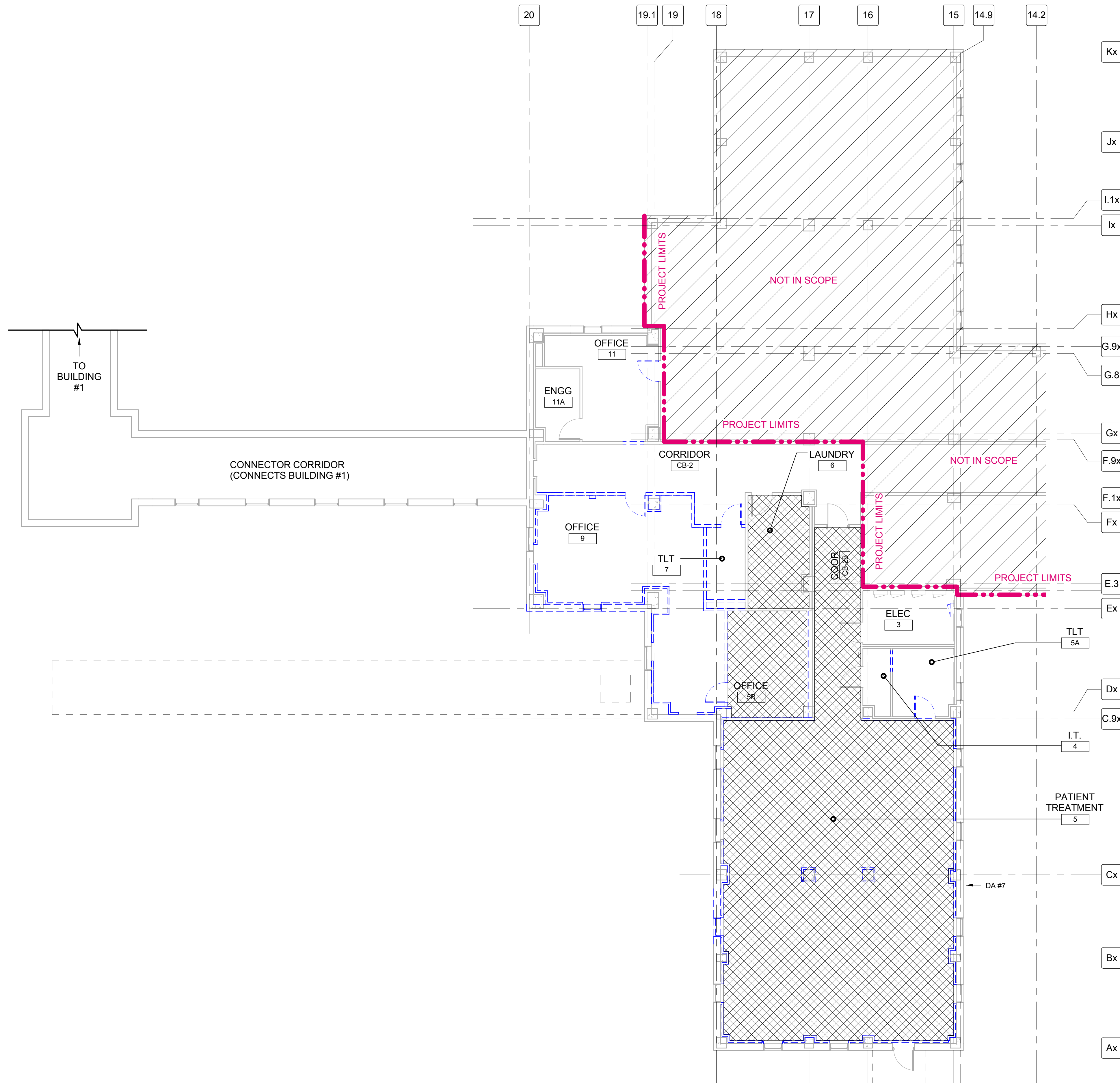
F

4/17/20 17 4:00:23 PM

9

ASBESTOS CONTAINING COMPONENTS QUANTITY	
MATERIAL	QUANTITY
FLOOR TILE AND ASBESTOS CONTAINING MASTIC	2,115 SF APPROX.

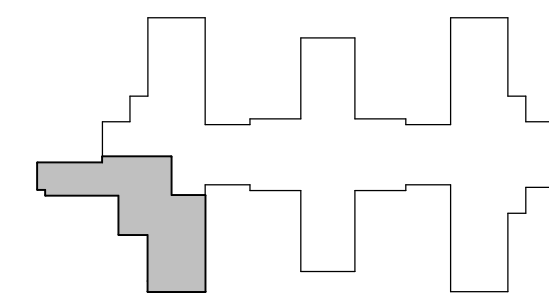
ASBESTOS MATERIAL LEGEND	
	ASBESTOS CONTAINING MASTIC OVER NON-ASBESTOS CONTAINING TILE



GENERAL ABATEMENT NOTES:

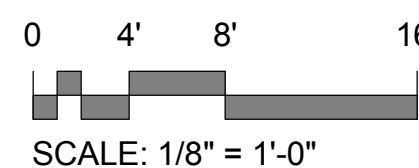
- CONTRACTOR SHALL REMOVE ALL ASBESTOS CONTAINING AND ASBESTOS CONTAMINATED MATERIALS INDICATED IN THESE GENERAL NOTES, SPECIFIC NOTES, SPECIFICATIONS AND AS SHOWN ON DRAWINGS, AND DISPOSE AS ASBESTOS WASTE. ASBESTOS CONTAINING AND ASBESTOS CONTAMINATED MATERIALS INCLUDE: VARIOUS FLOOR TILE AND FLOOR COVERINGS AND ASSOCIATED MASTICS/ADHESIVES/GLUES/FLOOR LEVELING COMPOUND AND ANY ACM DEBRIS. IN ACCORDANCE WITH SPECIFICATION SECTION 02 82 11 & 02 82 13.19.
- CONTRACTOR SHALL BE RESPONSIBLE FOR FIELD VERIFYING THE EXISTING QUANTITIES AND CONDITIONS OF ASBESTOS CONTAINING, ASBESTOS CONTAMINATED MATERIALS AND IMMEDIATELY NOTIFY THE CONTRACTING OFFICER IN WRITING OF ANY DISCREPANCIES FOUND. ALL QUANTITIES SHOWN ARE APPROXIMATE.
- PRIOR TO PLACING EQUIPMENT ON JOB SITE, THE CONTRACTOR SHALL PROVIDE MANUFACTURER'S CERTIFICATION TO CONTRACTING OFFICER FOR REVIEW AND APPROVAL.
- CONTRACTOR SHALL COORDINATE THIS ASBESTOS WITH THE CONTRACTING OFFICER TO MINIMIZE INTERFERENCE WITH STANDARD OPERATING PROCEDURES OF THE FACILITY.
- CONTRACTOR IS RESPONSIBLE FOR ENSURING ADEQUATE ELECTRICAL AND WATER SUPPLY IS AVAILABLE FOR THIS PROJECT. CONTRACTORS SHALL PROVIDE ADDITIONAL TEMPORARY UTILITY CAPACITY, IF REQUIRED. CONTRACTOR'S USE OF GOVERNMENT UTILITIES SHALL BE COORDINATED WITH CONTRACTING OFFICER.
- CONTRACTOR SHALL ENSURE THAT FIRE ALARMS AND FIRE SUPPRESSION SYSTEMS ARE PROTECTED DURING CONSTRUCTION AND REMAIN OPERATIONAL THROUGHOUT THE PROJECT.
- CONTRACTOR SHALL SUBMIT AND OBTAIN APPROVAL OF RECOMMENDED WORK SCHEDULE AND PHASING FOR SYSTEMS SHUT DOWN, ASBESTOS ABATEMENT AND RENOVATION/DEMOLITION OPERATIONS TO THE CONTRACTING OFFICER PRIOR TO BEGINNING ANY WORK.
- CONTRACTOR SHALL BE RESPONSIBLE FOR PHYSICALLY SECURING ALL ENTRANCES AND OPENINGS TO THE WORK AREA. ALL AREAS WHERE ASBESTOS CONTAINING MATERIAL ARE PRESENT SHALL BE CONSIDERED AN ASBESTOS REGULATED WORK AREA UNTIL SUCCESSFUL COMPLETION OF PROJECT FINAL CLEARANCE CRITERIA.
- LOCATION OF DECONTAMINATION SYSTEMS, ASBESTOS ABATEMENT CONTAINMENT BARRIERS SHALL BE APPROVED BY THE CONTRACTING OFFICER REPRESENTATIVE PRIOR TO START OF WORK.
- NEGATIVE AIR MACHINES EQUIPPED WITH HEPA FILTERS SHALL BE DISCHARGED TO THE OUTSIDE OF THE BUILDING A MINIMUM DISTANCE OF 30' FROM BUILDING MAKE-UP AIR.
- ASBESTOS DRAWINGS ARE DIAGRAMMATIC ONLY AND ARE NOT TO BE SCALED. CONTRACTOR SHALL VISIT SITE BEFORE WORK BEGINS TO VERIFY ALL DIMENSIONS AND WORK CONDITIONS. NOTIFY CONTRACTING OFFICER OF ANY CONFLICTS.
- CONTRACTOR SHALL ASSUME THAT ASBESTOS CONTAINING FLOOR TILE AND COVERINGS MAY CONSIST OF MULTIPLE LAYERS OF MASTICS, GLUES, ADHESIVES AND FLOOR LEVELING COMPOUND IN THEIR BIDS.
- CONTRACTOR SHALL ASSUME THAT ORIGINAL ASBESTOS CONTAINING FLOOR TILE, MASTICS, GLUES, ADHESIVES IS PRESENT BENEATH WALL PARTITIONS AND CABINETS AND FURNISHINGS. CONTRACTOR SHALL REMOVE AND DISPOSE OF THESE MATERIALS AS ASBESTOS CONTAMINATED WASTE AS NECESSARY TO INSTALL NEW WORK.
- ASBESTOS ABATEMENT CONTRACTOR SHALL REMOVE ACM PRIOR TO ALLOWING OTHER NON-ASBESTOS TRADES TO PERFORM RENOVATION WORK.
- AN ASBESTOS SURVEY REPORT FOR THIS PROJECT IS AVAILABLE FOR CONTRACTOR USE.

8E BASEMENT FLOOR PLAN - ASBETOS ABATEMENT
1/8" = 1'-0"




KEY PLAN
BASEMENT FFE: 1091.3'

NOTE:
NOT ALL KEYED NOTES APPLY TO ALL SHEETS.



CONSTRUCTION DOCUMENTS
FULLY SPRINKLERED

Revisions:	Date	<div><div>Corporate Office: 766 Middle St. Fairhope, AL 36532 Phone: 251.990.5778 Fax: 251.990.3716</div></div>	Approved: Patient Safety Nurse	Approved: Energy Engineer	Approved: Safety Manager	Approved: Service Chief	Drawing Title FLOOR PLAN - ASBESTOS ABATEMENT	Project Title RELOCATE AND EXPAND RENAL DIALYSIS	Date 2017.04.18	Veterans Affairs			
			Approved: Chief of Police	Approved: Infection Control Officer	Approved: Chief of Staff	Project No. 658-315							
			Approved: Chief of Mental Health Service	Approved: GEMS Coordinator	Approved: Associate Director	Approved: Chief of Facility Management Svc.			Building Number 2		Checked JF	Drawn DJH	Drawing No. HA100
						Approved: Medical Center Director			Location SALEM VA MEDICAL CENTER			Sheet 7 of 120	