



SUBMITTAL FORM

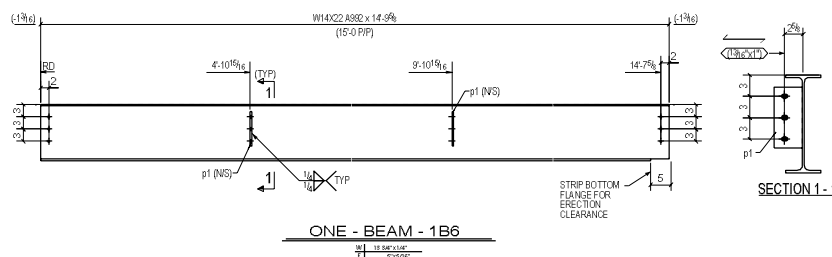
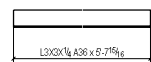
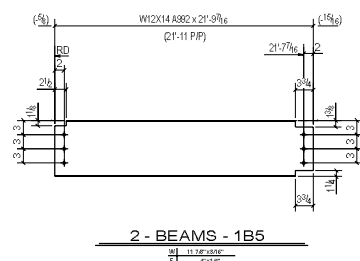
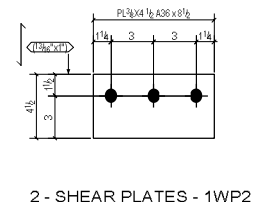
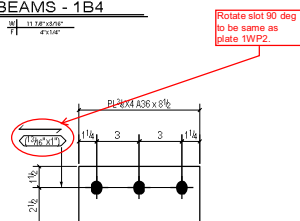
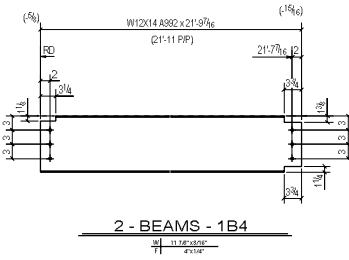
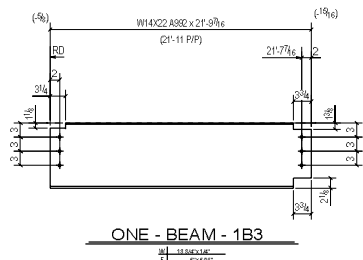
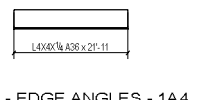
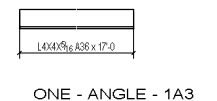
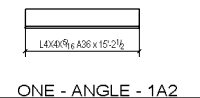
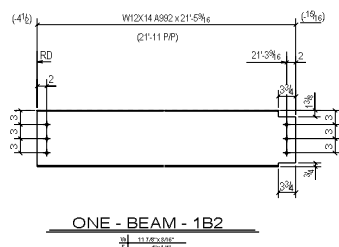
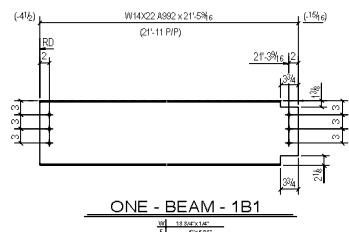
2 Crocker Blvd, Suite 303
Mount Clemens, MI 48043
(586) 468-1135 (586) 468-3456

(Project Title/Location 3 lines MAXIMUM)

To: (1) Jim Stockman Louis Stokes VA Medical Center 10701 East Boulevard Cleveland, OH 44106			Project Title: Renovate/Expand Palliative Care Ward		Submittal No.: 54	
			Submittal Date: October 7, 2014		Resubmittal No.:	

Specification Section No.	Product Manufacturer	Item Description	Number	Hard Copies	Electronic Copies	Product Data	Sample	Other	Approved	Disapproved	See Attached	Initial
		ER1A Erection Plan			1				X		X	
	Duke & Duke	1RA, 2RA Shop Details			1				X		X	
<p align="center">LOUIS STOKES CLEVELAND VA MEDICAL CENTER</p> <p> <input type="checkbox"/> APPROVED AS SUBMITTED <input checked="" type="checkbox"/> APPROVED, EXCEPT AS NOTED <input type="checkbox"/> DISAPPROVED, REVISE AND RESUBMIT <input type="checkbox"/> RESUBMIT FOR RECORD <input type="checkbox"/> RECEIPT ACKNOWLEDGED <input type="checkbox"/> OTHER (SPECIFY) </p> <p>Review is for conformance to general arrangement only subject to corrections and contract requirements. No responsibility assumed for quantities or dimensions.</p> <p>DATE: <u>10-7-16-2014</u></p> <p>BY: <u>[Signature]</u></p> <p>PROJECT NO: <u>541-231-101</u></p>												
<div style="border: 1px solid black; padding: 5px; width: fit-content;"> THP Limited, Inc. stamp is located on the first drawing sheet. "Exceptions Noted" </div>												

Remarks: Please return one stamped hard copy to STE.	The undersigned certifies that the above submitted items have been reviewed in detail, including materials, quantities, dimensions, specified performance criteria, installation requirements, catalog numbers and field conditions and are correct and in strict compliance with the Contract Documents, except as the undersigned has noted otherwise. Approval of items does not relieve the Contractor/Construction Manager from complying with all requirements of the Contract Documents. STE review does not relieve the contractor from responsibility for errors or omissions in this submittal.	Reviewed by: _____ Print Name _____ Sign Name _____ Date _____
	Contractor/Construction Manager: <u>Steve Reed</u> Signature: _____	



BILL OF MATERIAL							
MARK	QTY TOTAL	MATERIAL	LENGTH	STEEL GRADE	WEIGHT TOTAL	ADDNCE BILF	REMARKS
1A1	3	KICKER			83.23		
1A1	3	L3X3X1/4	5'-7 15/16"	A36	83.23		
1A2	1	ANGLE			124.22		
1A2	1	L4X4X5/16	15'-2 1/2"	A36	124.22		
1A3	1	ANGLE			138.85		
1A3	1	L4X4X5/16	17'-0"	A36	138.85		
1A4	2	EDGE ANGLE			289.40		
1A4	2	L4X4X1/4	21'-11"	A36	289.40		
1B1	1	BEAM			474.06		
1B1	1	W14X22	21'-5 9/16"	A592	474.06		
	6	FIELD BOLT 3/4"Ø A325N BOLT	0'-1 3/4"				
1B2	1	BEAM			303.87		
1B2	1	W12X14	21'-5 9/16"	A592	303.87		
	6	FIELD BOLT 3/4"Ø A325N BOLT	0'-1 3/4"				
1B3	1	BEAM			481.19		
1B3	1	W14X22	21'-9 7/16"	A592	481.19		
	6	FIELD BOLT 3/4"Ø A325N BOLT	0'-1 3/4"				
1B4	2	BEAM			616.87		
1B4	2	W12X14	21'-9 7/16"	A592	616.87		
	12	FIELD BOLT 3/4"Ø A325N BOLT	0'-1 3/4"				
1B5	2	BEAM			616.87		
1B5	2	W12X14	21'-9 7/16"	A592	616.87		
	12	FIELD BOLT 3/4"Ø A325N BOLT	0'-1 3/4"				
1B6	1	BEAM			334.16		
1B6	1	W14X22	14'-9 5/8"	A592	326.93		
p1	2	PL3/8"X4"	0'-8 1/2"	A36	7.23		
	6	FIELD BOLT 3/4"Ø A325N BOLT	0'-1 3/4"				
1WP1	2	SHEAR PLATE			7.23		
1WP1	2	PL3/8"X4"	0'-8 1/2"	A36	7.23		
1WP2	2	SHEAR PLATE			8.14		
1WP2	2	PL3/8"X4 1/2"	0'-8 1/2"	A36	8.14		
TOTAL WEIGHT					3478.09		

MAT'L (U/N)	HOLDS (U/N)	10/01/2014	△	FOR RE-APPROVAL	NAS	KNP
SHOP WELD (U/N)		DATE	REV	DESCRIPTION	BY	CHKY
—	—	ISSUE		THOMAS STEEL, INC. CONSTRUCTION CONSULTANTS BELLEVUE, OHIO		
FIELD CORN. (U/N)		FOR	NO.	DATE		
		△ APP	1	10/01/2014	PALLIATIVE CARE UNIT	
SURFACE PREPARATION SSPC-SP1					—	
SHOP PAINT (U/N) NO PAINT					—	
					—	
					BEAM	
SPECIAL -----					JOB NO. J-6605	DRAWN 10/01/2014
					CHECKED KNP	APPROVED
						1

