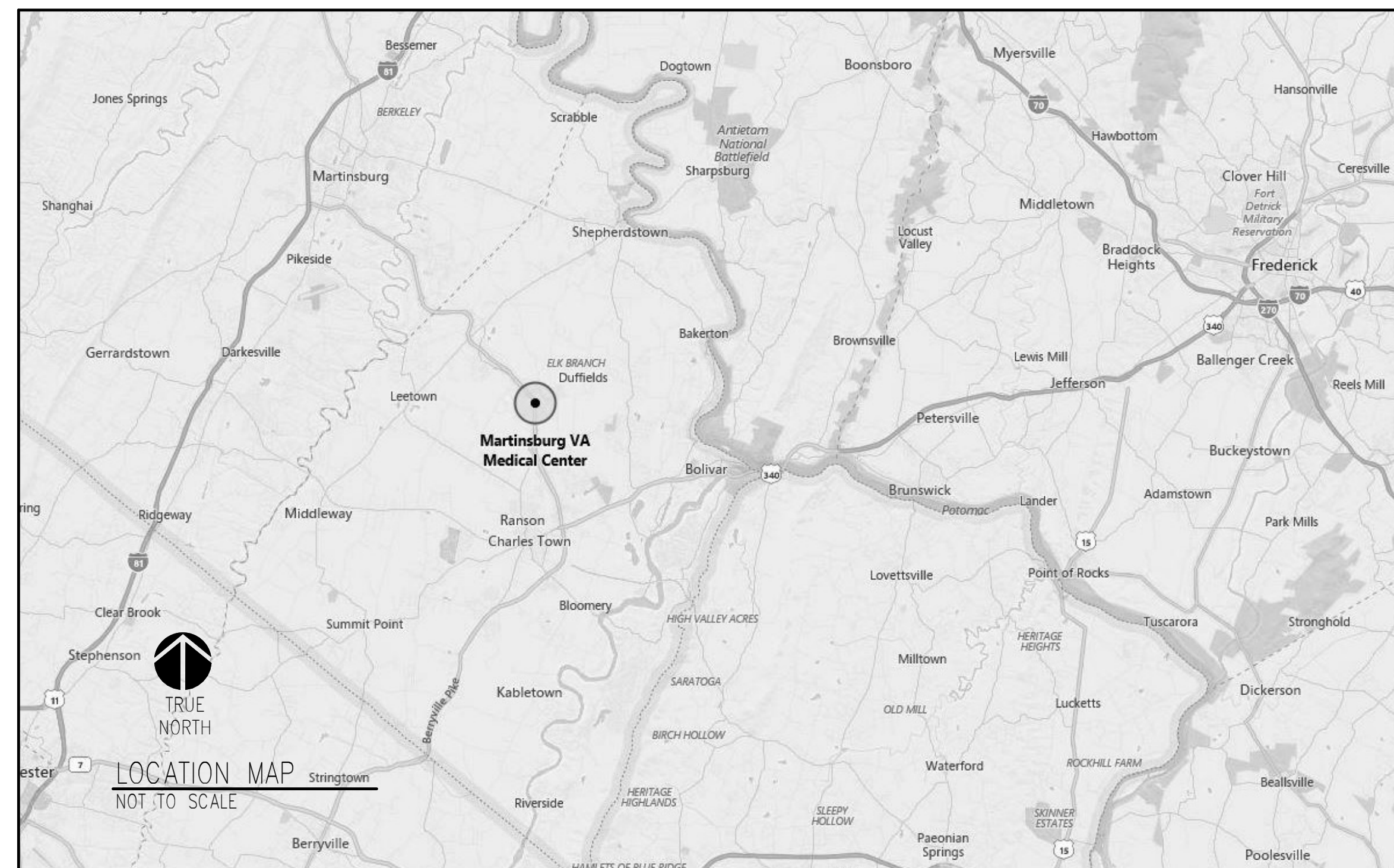
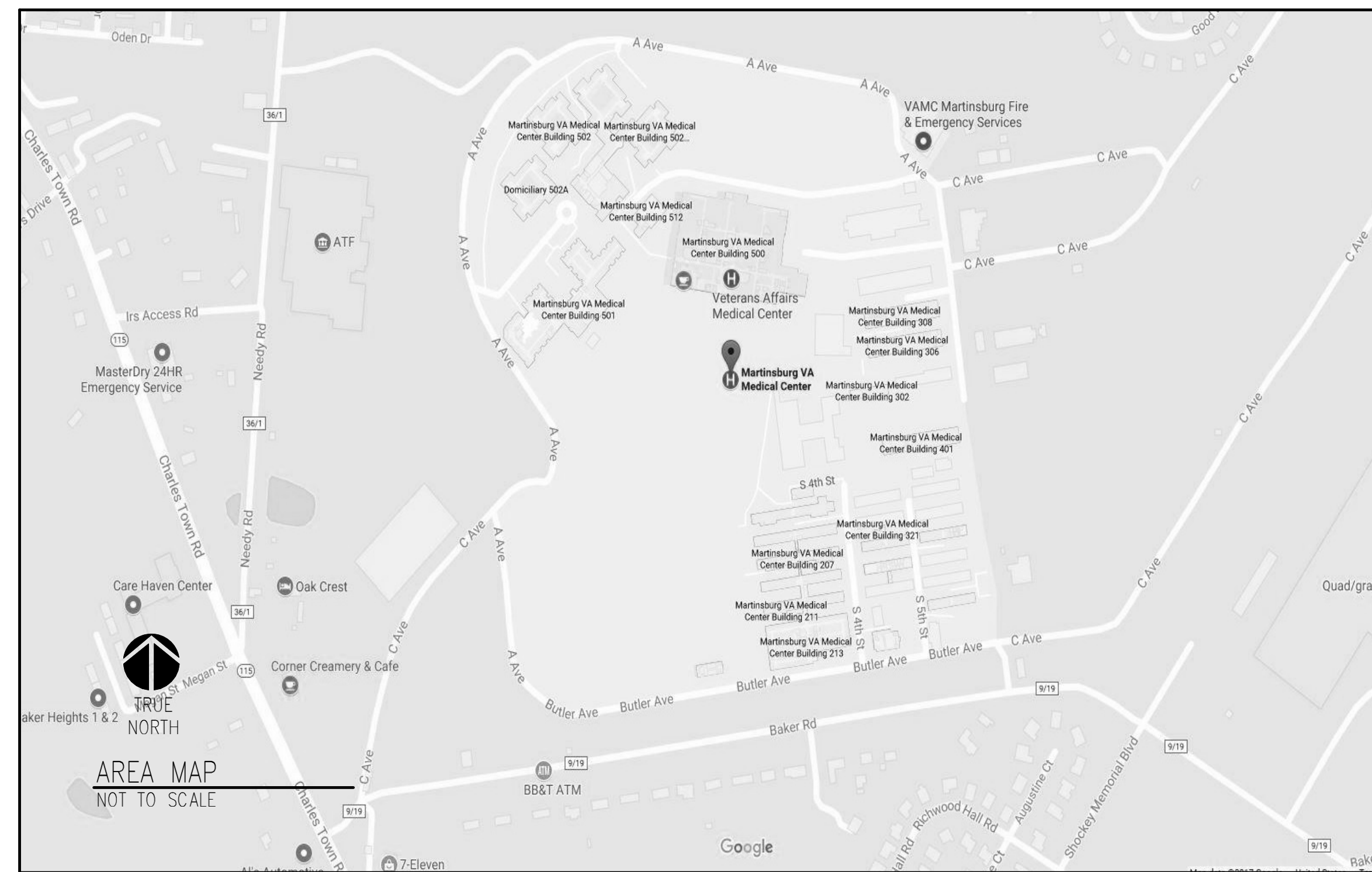


MARTINSBURG VA MEDICAL CENTER CONSTRUCT DOM CLINIC AND CLC ADMINISTRATION ADDITION

510 BUTLER AVENUE MARTINSBURG, WV 25405 PROJECT NO. 613-121 BID DOCUMENTS

three inches = one foot
one and one half inches = one foot
one inch = one foot
three quarters inch = one foot
one half inch = one foot
three eighths inch = one foot
one quarter inch = one foot
one eighth inch = one foot



SHEET INDEX		SHEET INDEX	
SHEET NO.	DRAWING TITLE	SHEET NO.	DRAWING TITLE
GENERAL		ARCHITECTURAL (CONTINUED)	
G001	COVER SHEET	A355	WALL SECTIONS - CLC ADMIN
G002	GENERAL NOTES, DETAILS, ABBREVIATIONS AND LEGENDS	A356	WALL SECTIONS - CLC ADMIN
G003	FIRST FLOOR DEDUCTIVE ALTERNATE PLAN - ALTERNATE NO. 5 (BID ITEM NO. 6)	A357	WALL SECTIONS - CLC ADMIN
CIVIL		A358	WALL SECTIONS - CLC ADMIN
C001	SITE SYMBOLS	A361	WALL SECTIONS - DOM CLINIC
C100	EXISTING SITE FEATURES - BUILDINGS 501 & 502	A362	WALL SECTIONS - DOM CLINIC
C0100	SITE DEMOLITION PLAN	A401	ENLARGED FLOOR PLANS
C110	SITE MATERIALS-BUILDING 501D	A451	INTERIOR ELEVATIONS
C111	SITE MATERIALS-BUILDING 502F	A452	INTERIOR ELEVATIONS
C120	SITE STAKE OUT PLAN - BUILDING 501D	A453	INTERIOR ELEVATIONS
C121	SITE STAKE OUT PLAN-BUILDING 502F	A501	PARTITION TYPES & FRAMING ELEVATIONS
C130	SITE GRADING PLAN-BUILDING 501D	A502	FRAMING DETAILS
C131	SITE GRADING PLAN-BUILDING 502F	A511	PLAN DETAILS
C140	SITE UTILITY PLAN-BUILDING 501D	A512	PLAN DETAILS
C141	SITE UTILITY PLAN-BUILDING 502F	A513	PLAN DETAILS
C150	EROSION & SEDIMENTATION CONTROL (E&S) PLAN-BUILDING 501D	A521	SECTION DETAILS
C151	EROSION & SEDIMENTATION CONTROL (E&S) PLAN-BUILDING 502F	A522	SECTION DETAILS
C510	SITE DETAILS	A531	ROOF DETAILS
C511	SITE DETAILS	A532	ROOF DETAILS
C540	STORM WATER MANAGEMENT DETAILS	A541	EXTERIOR INSULATION FINISHING SYSTEM DETAILS
C541	SITE UTILITY DETAILS	A601	ROOM FINISH SCHEDULES AND EQUIPMENT SCHEDULE
C550	EROSION & SEDIMENTATION CONTROL (E&S) DETAILS	A611	DOOR AND FRAME TYPES, SCHEDULES AND DETAILS
C740	UTILITY PROFILES	A612	WINDOW AND LOUVER TYPES AND DETAILS
C741	UTILITY PROFILES	A701	SIGNAGE TYPES
ARCHITECTURAL		STRUCTURAL	
HM101	FIRST FLOOR HAZARDOUS MATERIAL ABATEMENT PLAN - CLC ADMIN	S001	STRUCTURAL NOTES
HM102	FIRST FLOOR HAZARDOUS MATERIAL ABATEMENT PLAN - DOM CLINIC	S002	STRUCTURAL NOTES
AD101	FIRST FLOOR DEMO PLAN - CLC ADMIN	S003	STRUCTURAL NOTES
AD102	FIRST FLOOR DEMO PLAN - DOM CLINIC	S101	CLC ADMIN ADDITION FOUNDATION PLAN
LS101	FIRST FLOOR LIFE SAFETY PLAN - CLC ADMIN	S102	CLC ADMIN ADDITION LOW ROOF FRAMING PLAN
LS102	FIRST FLOOR LIFE SAFETY PLAN - DOM CLINIC	S103	CLC ADMIN ADDITION HIGH ROOF FRAMING PLAN
A100	AREA PLANS - CLC ADMIN AND DOM CLINIC	S104	DOMICILIARY CLINIC ADDITION FOUNDATION PLAN
A101	FIRST FLOOR ANNOTATION PLAN - CLC ADMIN	S105	DOMICILIARY CLINIC ADDITION ROOF FRAMING PLAN
A101A	FIRST FLOOR DIMENSION PLAN - CLC ADMIN	S201	BRACING ELEVATIONS CLC ADMIN ADDITION
A102	FIRST FLOOR ANNOTATION PLAN - DOM CLINIC	S202	BRACING AND FRAMING ELEVATIONS CLC ADMIN ADDITION
A102A	FIRST FLOOR DIMENSION PLAN - DOM CLINIC	S203	BRACING ELEVATIONS - DOMICILIARY ADDITION
A111	FIRST FLOOR REFLECTED CEILING PLAN - CLC ADMIN	S301	CONCRETE DETAILS
A112	FIRST FLOOR REFLECTED CEILING PLAN - DOM CLINIC	S302	CONCRETE DETAILS
A121	ROOF PLAN - CLC ADMIN	S303	CONCRETE DETAILS
A122	ROOF PLAN - DOM CLINIC	S304	CONCRETE DETAILS
A131	FIRST FLOOR PNEUMATIC TUBE SYSTEM PLAN - CLC ADMIN	S305	CONCRETE DETAILS
A132	FIRST FLOOR PNEUMATIC TUBE SYSTEM PLAN - DOM CLINIC	S401	MASONRY DETAILS
A201	EXTERIOR ELEVATIONS - CLC ADMIN	S501	STEEL DETAILS
A202	EXTERIOR ELEVATIONS AND BUILDING SECTIONS - DOM CLINIC	S502	STEEL DETAILS
A301	BUILDING SECTIONS - CLC ADMIN	S503	STEEL DETAILS
A351	WALL SECTIONS - CLC ADMIN	S504	STEEL DETAILS
A352	WALL SECTIONS - CLC ADMIN	FIRE PROTECTION	
A353	WALL SECTIONS - CLC ADMIN	FP01	GENERAL NOTES AND DETAILS
A354	WALL SECTIONS - CLC ADMIN	FP101	FIRST FLOOR CLC ADMIN
		FP102	FIRST FLOOR DOM CLINIC
		ELECTRICAL	
		E001	ELECTRICAL LEGEND
		ED101	ELECTRICAL DEMOLITION PLAN - CLC ADMIN
		EL101	FIRST FLOOR LIGHTING PLAN - CLC ADMIN
		EL102	FIRST FLOOR LIGHTING PLAN - DOM CLINIC
		EL601	LIGHTING FIXTURE SCHEDULE AND DETAILS
		EP101	FIRST FLOOR POWER PLAN - CLC ADMIN
		EP102	FIRST FLOOR POWER PLAN - DOM CLINIC
		EP103	ROOF POWER, LIGHTNING PROTECTION, AND GROUNDING PLANS - CLC ADMIN AND DOM CLINIC
		EP104	FIRST FLOOR ELECTRICAL PLAN - CLC ADMIN - ALTERNATE No.5 - (BID ITEM No.6)
		EP501	ELECTRICAL DETAILS
		EP601	ELECTRICAL SCHEDULES
		EP602	ELECTRICAL SCHEDULES
		EP701	POWER RISER DIAGRAM AND MECHANICAL CONNECTION SCHEDULE
		EY101	FIRST FLOOR TELECOMMUNICATIONS PLAN - CLC ADMINISTRATION ADDITION
		EY102	FIRST FLOOR TELECOMMUNICATIONS PLAN - DOMICILIARY CLINIC
		EY501	TELECOMMUNICATIONS DETAILS
		EY701	TELECOMMUNICATIONS RISER DIAGRAMS

Revisions:	Date:

CONSULTANTS:



ARCHITECT/ENGINEERS:

Drawing Title:
COVER SHEET

Approved Project Director:

Project Title:
CONSTRUCT DOM CLINIC AND CLC ADMINISTRATION ADDITION

Project Number:
613-121

Building Number:
501D & 502F

Location:
MARTINSBURG, WV

Date:
June 27, 2018

Checked:
PB

Drawn:
SJ

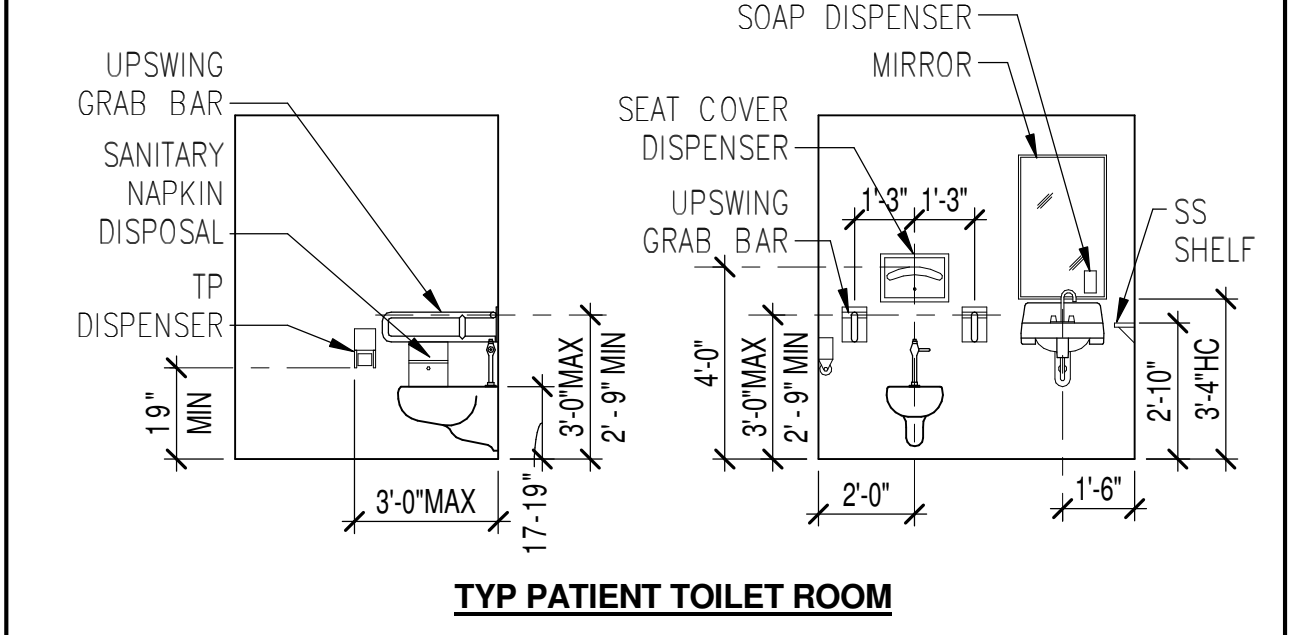
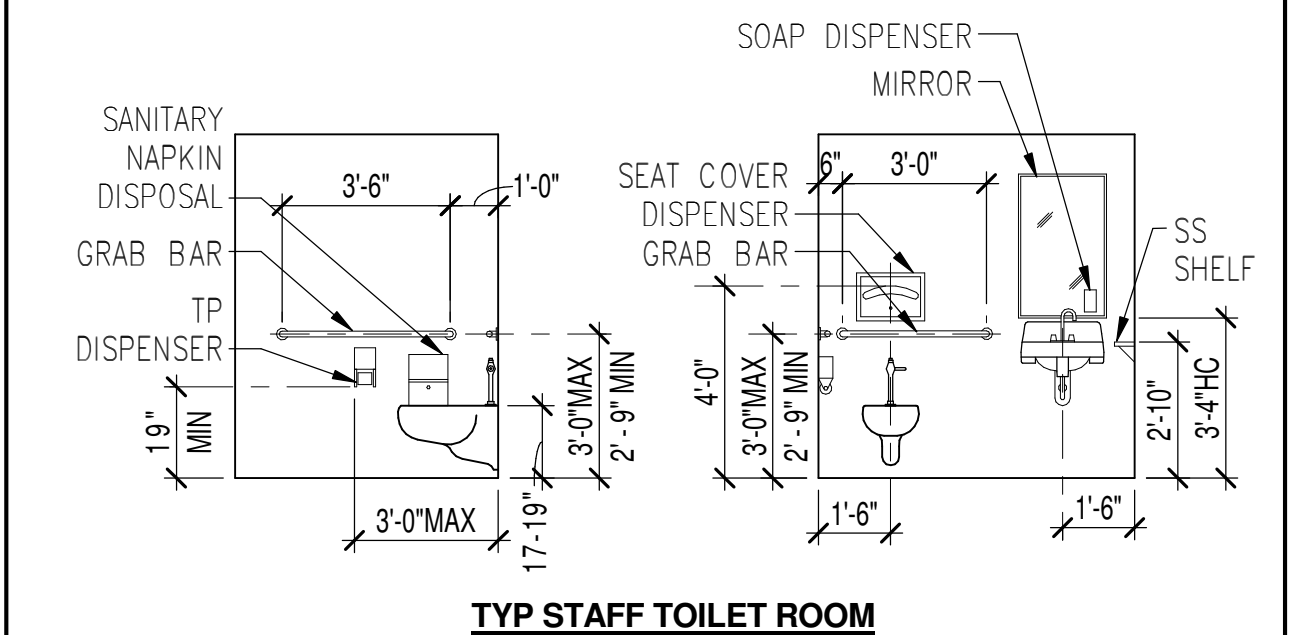
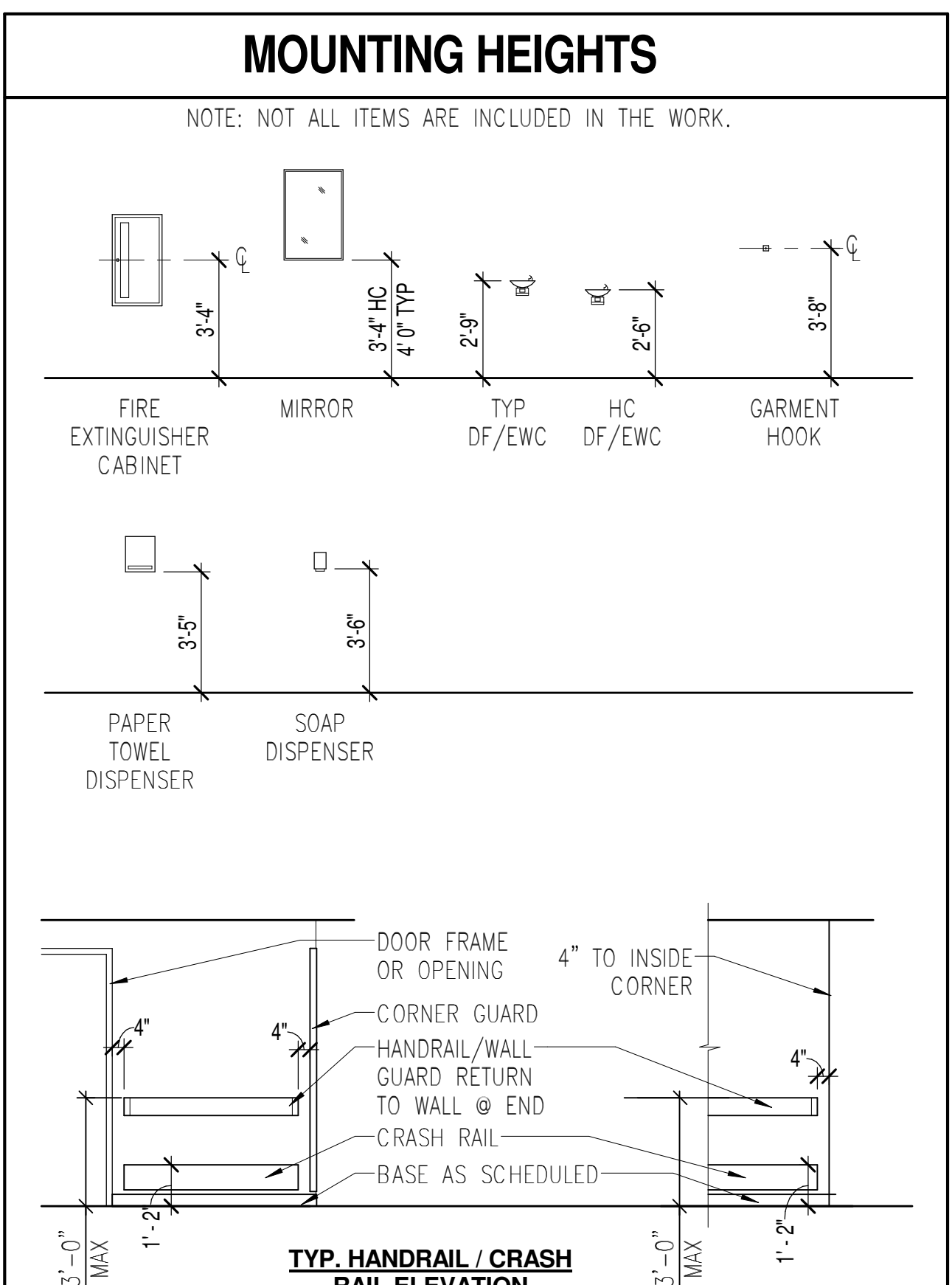
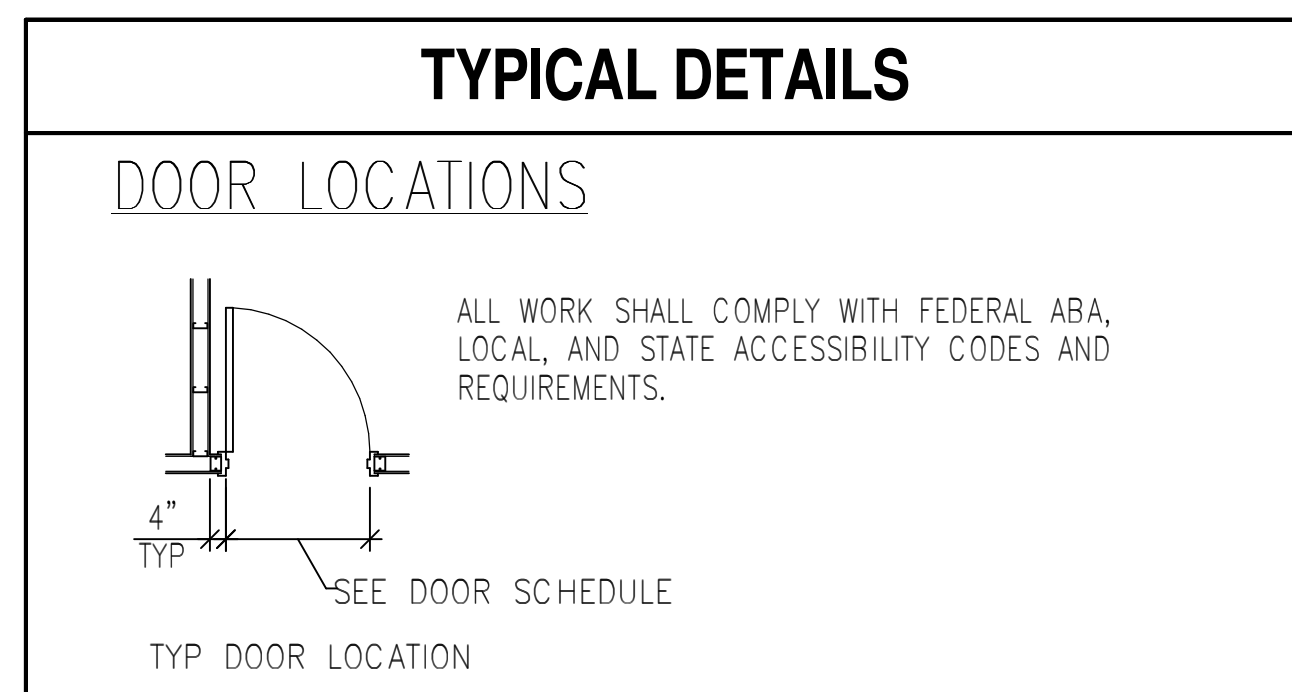
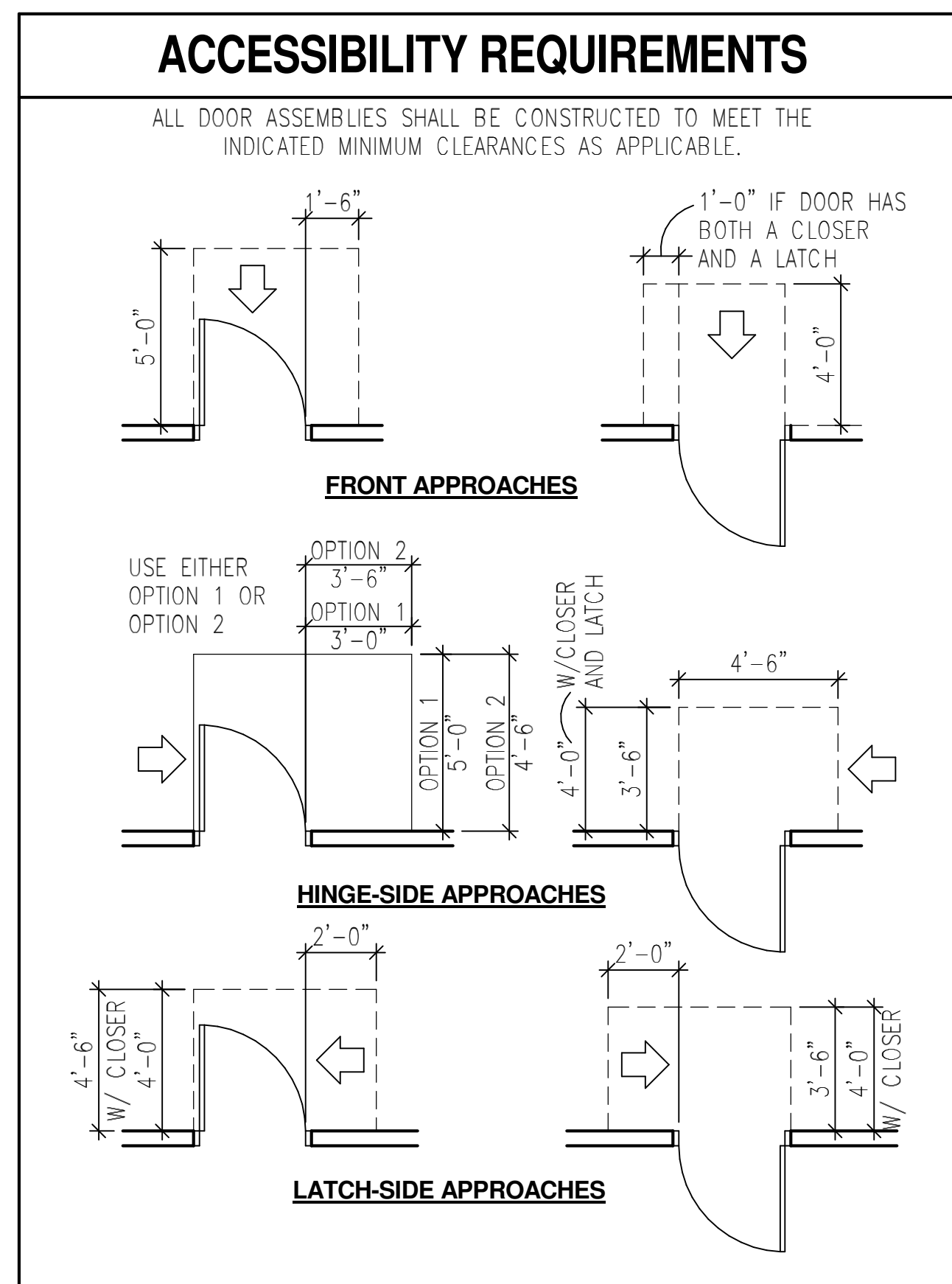
Dwg. of
G001

BID DOCUMENTS

OFFICE OF CONSTRUCTION AND FACILITIES MANAGEMENT

Department of Veterans Affairs

three inches = one foot
 one and one half inches = one foot
 one inch = one foot
 three quarters inch = one foot
 one half inch = one foot
 three eighths inch = one foot
 one quarter inch = one foot
 one eighth inch = one foot



- ### ARCHITECTURAL GENERAL NOTES
- DIMENSIONS, UNLESS OTHERWISE INDICATED, ARE TO:
 - FACE OF NEW MASONRY
 - FACE OF NEW WALL STUDS
 - TOP OF SLAB
 - TOP OF MASONRY
 - COORDINATE WITH ELECTRICAL, HVAC, PLUMBING, AND FIRE PROTECTION DRAWINGS FOR ADDITIONAL REQUIREMENTS. COORDINATE DUCT, CONDUIT, AND PIPE OPENINGS IN SLABS, ROOF, AND WALLS. COORDINATE DUCT, CONDUIT, AND PIPE ROUTING ABOVE CEILINGS. PATCH HOLES CAUSED BY THE REMOVAL OF EQUIPMENT, PIPING, CONDUIT, DUCT, GRILLS, ETC., WITH MATERIALS MATCHING EXISTING SLAB OR WALL IN STRUCTURE, MATERIAL, THICKNESS, ALIGNMENT, GRADES, AND QUALITY.
 - COORDINATE AND PROVIDE SOLID FIRE RETARDANT TREATED WOOD BLOCKING FOR WALL HOOKS, BRACKETS, GRAB BARS, COMPUTER MONITORS, TELEVISION WALL BRACKETS, HANDRAILS, GUARDRAILS, WOOD MOLDINGS, DISPLAYS, ACCESSORIES ETC., BETWEEN STUDS. COORDINATE LOCATIONS WITH COR FOR GOVERNMENT FURNISHED EQUIPMENT.
 - 'PROVIDE' IS DEFINED AS PROVIDING MATERIALS, DELIVERY, STORAGE, HANDLING, INSTALLATION, ADJUSTMENT, AND CLEANING FOR THE ITEM INDICATED.
 - SEAL PIPE PENETRATIONS THROUGH SLABS, MASONRY, SMOKE RATED PARTITIONS AND FIRE-RATED PARTITIONS WITH THE APPROPRIATE FIRESTOP TO MAINTAIN THE RATING OF THE WALL OR SLAB. SUBMIT CUT SHEETS AND SPECIFICATIONS TO THE COR FOR APPROVAL PRIOR TO INSTALLATION. PROVIDE UL LISTED ASSEMBLIES.
 - COORDINATE CONTRACTOR DUMPSTER LOCATION WITH GOVERNMENT. DUMPSTER LOCATION TO BE IDENTIFIED PRIOR TO BIDDING.
 - COORDINATE DEMOLITION AND NEW WORK AMONG DISCIPLINES.
 - REMOVE COMPLETELY ALL MATERIALS AS INDICATED ON THE DRAWINGS AND AS REQUIRED FOR NEW CONSTRUCTION.
 - CONTRACTOR SHALL NOT PROCEED WITH WORK UNTIL CONSTRUCTION PERMIT IS APPROVED/SIGNED.
 - COMPLETE LAYOUT AND COORDINATION DRAWINGS AT 1/4" SCALE SHALL BE PROVIDED. CONSTRUCTION WORK SHALL NOT START ON ANY SYSTEM UNTIL THE LAYOUT AND COORDINATION DRAWINGS HAVE BEEN APPROVED.

- ### GENERAL PROJECT NOTES
- THE CONTRACTOR SHALL BE PREPARED TO STOP ANY WORK AND CLEAR UP THE WORK AREA IF SO ASKED IN MEDICAL SITUATIONS REQUIRING SUCH ACTION.
 - THE CONTRACTOR SHALL NOT ORDER OR INSTALL ANY MATERIALS OR EQUIPMENT UNTIL SUBMITTALS FOR SUCH HAVE BEEN APPROVED.
 - ALL TOOLS AND MATERIALS USED IN THIS PROJECT SHALL BE PROPERLY SECURED AT ALL TIMES BY THE CONTRACTOR TO REDUCE POSSIBILITY OF ANY OF THESE TOOLS BEING A HAZARD TO PATIENTS, VISITORS, OR EMPLOYEES.
 - THE CONTRACTOR WILL BE RESPONSIBLE FOR ACQUIRING I.D. BADGES FOR EACH MEMBER OF HIS WORK FORCE. VALID FORMS OF I.D. ARE REQUIRED TO RECEIVE BADGES. COORDINATE WITH COR.
 - THE CONTRACTOR, AT HIS EXPENSE, WILL BE RESPONSIBLE FOR TRAINING EACH MEMBER OF HIS WORK FORCE ON VA POLICIES FOR ON-SITE WORK BEFORE ANY MEMBER WILL BE ALLOWED TO PERFORM WORK ON VA PREMISES.
 - ABSOLUTELY NO VA TOOLS, MATERIALS, OR EQUIPMENT WILL BE LOANED OR GIVEN BY THE VA TO ANY MEMBER OF THE CONTRACTOR'S WORK FORCE AT ANY TIME.
 - ANY SMOKE DETECTORS HAVING ANY POTENTIAL FOR EXPOSURE TO CONSTRUCTION SMOKE, DUST, AND DEBRIS SHALL BE SUITABLY PROTECTED TO PREVENT ACCIDENTAL ALARM DURING CONSTRUCTION. ALL SUCH ACTION MUST BE FIRST COORDINATED AND CLEARED WITH COR AND THE VA SAFETY OFFICER. ALL FUNCTIONAL FIRE ALARM DEVICES SHALL BE ACTIVE WHENEVER CONTRACTOR'S FORCES ARE NOT PRESENT IN WORK AREA.
 - THE CONTRACTOR MUST PROVIDE WRITTEN FIRE SAFETY CHECKLIST AT THE END OF EVERY WORK DAY TO THE COR CERTIFYING THAT ALL WORK AREAS HAVE BEEN SURVEYED AND FOUND TO BE SECURE, SAFE, AND FREE OF ANY FLAMMABLE LIQUIDS.
 - CONTRACTOR SHALL COORDINATE ONLY WITH THE COR AND CONTRACTING OFFICER.
 - SEE SPECIFICATION SECTION 01 35 26 FOR INTERIM LIFE SAFETY MEASURES.
 - ALL FINISH COLORS TO BE SELECTED BY COR/ VA INTERIOR DESIGNER WHERE NOT OTHERWISE INDICATED. CONTRACTOR SHALL SUBMIT THE COLORS PER SUBMITTAL REQUIREMENT OF CONTRACT.
 - SEAL ALL PLATES, COVERS, DEVICES, AND GENERAL WALL AND CEILING PENETRATIONS IN ALL NEW SPACES, TYPICAL.
 - PROVIDE 16" x 16" ACCESS PANELS IN HARD CEILINGS WHERE DUCTS AND DAMPERS OR OTHER PIPES REQUIRE ACCESS AS REQUIRED. COORDINATE EXACT LOCATION W/COR.
 - THE CONTRACTOR SHALL NOT OPERATE ANY EXISTING VA EQUIPMENT INCLUDING BUT NOT LIMITED TO ELECTRICAL, FIRE-HYDRANT, VALVES, PUMPS, ETC., WITH OUT AUTHORIZATION FROM THE VAMC ENGINEERING SERVICE, UNLESS AN EMERGENCY SITUATION EXISTS. IN GENERAL, THE OPERATING STAFF OF THE VAMC ENGINEERING SERVICE WILL OPERATE ANY EXISTING EQUIPMENT WHICH THE CONTRACTOR MAY REQUIRE.

ARCHITECTURAL LEGEND

F.E.C.	FIRE EXTINGUISHER CABINET
ROOM NAME [123]	ROOM NAME AND NUMBER
123	DOOR NUMBER
◇	DEMOLITION NOTE
①	KEYED NOTE
①	WINDOW TYPE
GA4	PARTITION TYPE OR TOILET ACCESSORY
440	DETAIL CALLOUT
440	—DETAIL NUMBER
440	—SHEET WHERE DETAIL IS DRAWN
430	SECTION CALLOUT
430	—DETAIL NUMBER
430	—SHEET WHERE DETAIL IS DRAWN
①	SECTION CUT
①	—HEAD/JAMB/SILL DETAIL NUMBER
± 0'-6"	VERTICAL ELEVATION
A	COLUMN CENTERLINE DESIGNATION
4201	ELEVATION CALLOUT
4201	—DETAIL NUMBER
4201	—SHEET WHERE DETAIL IS DRAWN

ARCHITECTURAL ABBREVIATIONS

AC	AIR CONDITIONING
AT	ACOUSTICAL CEILING TILE
AFF	ABOVE FINISH FLOOR
ALUM	ALUMINUM
BATT	BATT INSULATION
BO	BOTTOM OF
CBB	CEMENTITIOUS BACKER BOARD
C/W	CEMENTITIOUS CRYSTALLINE WATERPROOFING
CFMF	COLD-FORMED METAL FRAMING
CG	CORNER GUARD
CJ	CONTROL JOINT
CL	CENTERLINE
CMT	CERAMIC MOSAIC TILE
CMU	CONCRETE MASONRY UNIT
CO	CASED OPENING
COMM	COMMUNICATION
CONC	CONCRETE
CONC-S	CONCRETE WITH SEALER
CONT	CONTINUOUS
COR	CONTRACTING OFFICER'S REPRESENTATIVE
COTR	CONTRACTING OFFICER'S TECHNICAL REPRESENTATIVE
CR	CARD READER
CT	CERAMIC TILE
CTB	CERAMIC TILE BASE
CP	CARPET
DIA	DIAMETER
DS	DOWNSPOUT
EDF	ELECTRIC DRINKING FOUNTAIN
EIFS	EXTERIOR INSULATION FINISHING SYSTEM
EJ	EXPANSION JOINT
ELEC	ELECTRICAL
FDD	EDGE OF DECK
EQ	EQUAL
ES	EXPOSED STRUCTURE
ETC	ET CETERA
EXIST	EXISTING
EXP	EXPOSED
FAC FIN	FACILITY FINISH
FD	FLOOR DRAIN
FEC	FIRE EXTINGUISHER CABINET
FHC	FIRE HOSE CABINET
FF	FINISHED FLOOR
FIN	FINISH
FLR	FLOOR
FO	FACE OF
FRT	FIRE RETARDANT TREATED
FV	FIELD VERIFY
	(PRIOR TO ORDERING OR CUTTING)
	FABRIC WALLCOVERING
FWC	GAGE
GA	GRANITE
GRA	GYPSUM (WALL) BOARD
GYP	BD/GWB
HC	HANDICAPPED
HM	HOLLOW METAL
HR	HANDRAIL
HPL	HIGH-PRESSURE LAMINATE
HVAC	HEATING VENTILATION AND AIR-CONDITIONING
LVT	LUXURY VINYL TILE
MATL	MATERIAL
MAX	MAXIMUM
MECH	MECHANICAL
MFR	MANUFACTURER
MIN	MINIMUM
MO	MASONRY OPENING
MTL	METAL
NIC	NOT IN CONTRACT
NTS	NOT TO SCALE
OC	ON CENTER
OH	OPPOSITE HAND
PB	PORCELAIN BASE
PLS	PLASTER
PL	PLASTIC LAMINATE
PT	PORCELAIN TILE
PAIR	PAIR
P	PAINT
PT	QUARRY TILE
QB	RESILIENT BASE
REF	REFRIGERATOR
REQ'D	REQUIRED
RES-2	RESINOUS FLOORING
RES-W	RESINOUS EPOXY WALL-CEILING
RO	ROUGH OPENING
RF	RUBBER FLOORING
RPH	RECESSED PAPER HOLDER
SC	SEALED HIGH BUILD GLAZED COATING (SPECIAL COATING)
SD	SOAP DISPENSER
SCW	SOLID CORE WOOD
SIM	SIMILAR
SND	SANITARY NAPKIN DISPENSER
SP	SPECIAL FACED
SS	STAINLESS STEEL/SOLID SURFACE
STL	STEEL
SUBS	SUBSTRATE
SV	SHEET VINYL
SVT	SOLID VINYL TILE
TB	TACK BOARD
TELE	TELEPHONE
TO	TOP OF
TP	TOILET PAPER
TYP	TYPICAL
UNO	UNLESS NOTED OTHERWISE
VCT	VINYL COMPOSITION TILE
VWC	VINYL WALL COVERING
WC	WALL COVERING
WP	WALL PROTECTION
WR	WATER RESISTANT
WD	WOOD
WSF	WELDED SEAM SHEET FLOORING (HEAT WELDED WITH ROD)

Revisions:	Date:

CONSULTANTS:

INNOVATIVE ENGINEERING INCORPORATED

CLARK NEXSEN



ARCHITECT/ENGINEERS:

TOLAND MIZELL MOLNAR

590 MEANS ST NW ATLANTA, GA 30318

Drawing Title:
GENERAL NOTES, DETAILS, ABBREVIATIONS AND LEGENDS

Approved Project Director:

Project Title:
CONSTRUCT DOM CLINIC AND CLC ADMINISTRATION ADDITION

Project Number:
613-121

Building Number:
501D & 502F

Location:
MARTINSBURG, WV

Date:
 June 27, 2018

Checked:
 PB

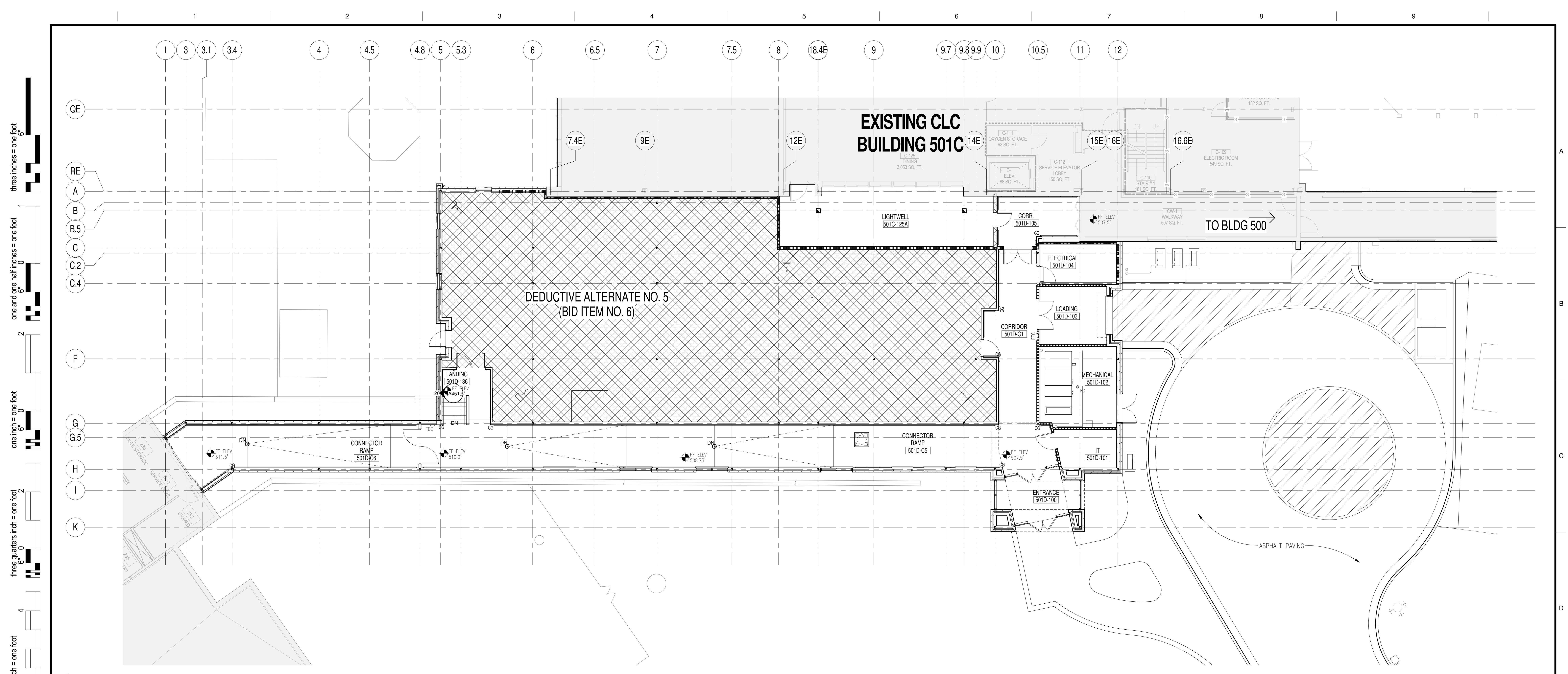
Drawn:
 SJ

Dwg. of
G002

BID DOCUMENTS

OFFICE OF CONSTRUCTION AND FACILITIES MANAGEMENT

Department of Veterans Affairs



1 FIRST FLOOR DEDUCTIVE ALTERNATE PLAN - CLC ADMIN
G003 1/8" = 1'-0"

DEDUCTIVE ALTERNATE PLAN GENERAL NOTES

- A. NO BUILDOUT OF CROSS HATCHED AREA ABOVE - DRAWING 1/G003.
- B. OMIT WALL FRAMING AS SHOWN ABOVE.
- C. OMIT (4) FOUR INTERIOR WINDOWS AT CONNECTOR RAMP. SEE DRAWING 19/A451.
- D. OMIT FLOOR, BASE, WALL & CEILING FINISHES AS SHOWN ABOVE.
- E. FINISH INTERIOR FACE OF PERIMETER WALL, DO NOT PAINT.
- F. DOORS AND DOOR HARDWARE TO REMAIN.
- G. REFER TO SHEETS FP101, PL107, PL108, MH105 AND EP104 FOR ADDITIONAL INFORMATION.

three inches = one foot
 one and one half inches = one foot
 one inch = one foot
 three quarters inch = one foot
 one half inch = one foot
 one quarter inch = one foot
 three eighths inch = one foot
 one eighth inch = one foot
 one eighth inch = one foot
 one eighth inch = one foot

Revisions:	Date:

CONSULTANTS:



ARCHITECT/ENGINEERS:

Drawing Title:
FIRST FLOOR DEDUCTIVE ALTERNATE PLAN - ALTERNATE NO. 5 (BID ITEM NO. 6)

Approved Project Director:

Project Title:
CONSTRUCT DOM CLINIC AND CLC ADMINISTRATION ADDITION

Location:
MARTINSBURG, WV

Date: June 27, 2018

Checked: Checker

Drawn: Author

Project Number:
613-121

Building Number:

Drawing Number:
G003

Dwg. of

BID DOCUMENTS

OFFICE OF CONSTRUCTION AND FACILITIES MANAGEMENT

Department of Veterans Affairs