

CLC ADMIN. FIXTURE UNIT CALCULATION										
MARK	FIXTURE	QTY	DRAINAGE FU		DOMESTIC WATER FU					
			EACH	TOTAL	COLD WATER EACH	COLD WATER TOTAL	HOT WATER EACH	HOT WATER TOTAL	WATER SUPPLY EACH	WATER SUPPLY TOTAL
P-103	WATER CLOSET, FLUSH VALVE, PUBLIC	4	4.00	16.00	10.00	40.00	-	-	10.00	40.00
P-401	LAVATORY, PUBLIC	4	1.00	4.00	1.50	6.00	1.50	6.00	2.00	8.00
P-502	SERVICE SINK	1	2.00	2.00	3.00	3.00	3.00	3.00	4.00	4.00
P-524	SINK, CRS	1	3.00	3.00	1.50	1.50	1.50	1.50	2.00	2.00
P-528	SINK, CRS	6	3.00	18.00	1.50	9.00	1.50	9.00	2.00	12.00
P-609	ELECTRIC WATER COOLER	2	0.50	1.00	0.25	0.50	-	-	0.25	0.50
P-801	WALL HYDRANT	2	-	-	-	-	-	-	-	-
P-812	WATER SUPPLY BOX UNIT	1	-	-	-	-	-	-	-	-
FD-1	FLOOR DRAIN	2	2.00	4.00	-	-	-	-	-	-
			48.00		60.00		19.50		66.50	
DOMESTIC WATER SUPPLY					66.50 WSFU = 58.00 GPM.					
DOMESTIC COLD WATER SUPPLY					60.00 WSFU = 54.00 GPM					
DOMESTIC HOT WATER SUPPLY					19.50 WSFU = 19.60 GPM					
PIPE SIZE:			4" DRAINAGE		2-1/2" DCWS ~ 1-1/4" DHWS					

DOM. CLINIC FIXTURE UNIT CALCULATION										
MARK	FIXTURE	QTY	DRAINAGE FU		DOMESTIC WATER FU					
			EACH	TOTAL	COLD WATER EACH	COLD WATER TOTAL	HOT WATER EACH	HOT WATER TOTAL	WATER SUPPLY EACH	WATER SUPPLY TOTAL
P-103	WATER CLOSET, FLUSH VALVE, PUBLIC	3	4.00	12.00	10.00	30.00	-	-	10.00	30.00
P-401	LAVATORY, PUBLIC	3	1.00	3.00	1.50	4.50	1.50	4.50	2.00	6.00
P-502	SERVICE SINK	1	2.00	2.00	3.00	3.00	3.00	3.00	4.00	4.00
P-528	SINK, CRS	8	3.00	24.00	1.50	12.00	1.50	12.00	2.00	16.00
P-609	ELECTRIC WATER COOLER	1	0.50	0.50	0.25	0.25	-	-	0.25	0.25
P-801	WALL HYDRANT	2	-	-	-	-	-	-	-	-
FD-1	FLOOR DRAIN	2	2.00	4.00	-	-	-	-	-	-
			45.50		49.75		19.50		56.25	
DOMESTIC WATER SUPPLY					56.25 WSFU = 54.00 GPM					
DOMESTIC COLD WATER SUPPLY					49.75 WSFU = 50.00 GPM					
DOMESTIC HOT WATER SUPPLY					19.50 WSFU = 19.00 GPM					
PIPE SIZE:			4" DRAINAGE		2" DCWS ~ 1-1/4" DHWS					

DOMESTIC WATER CALCULATIONS				
SIZE	GPM		WSFU FLUSH VALVE	WSFU FLUSH TANK
	FLUSH VALVE	FLUSH TANK		
1/2"	3	3	-	1
3/4"	6	6	-	2
1"	15	15	1	10
1-1/4"	21	23	6	25
1-1/2"	30	34	12	60
2"	61	64	45	180
2-1/2"	75	94	275	500

NOTES:				
1. FIXTURE UNIT VALUES BASED ON THE VAMC PLUMBING DESIGN MANUAL SIZING CHARTS.				
2. MAX VELOCITY FOR HOT WATER - 5 FT/SEC, FOR COLD WATER 6 FT/SECOND.				

SHOCK ABSORBER SCHEDULE						
ABSORBOTRON TYPE NO.	5005	5010	5020	5030	5040	5050
P.D.I. SYMBOLS	A	B	C	D	E	F
FIXTURE UNIT RATING	1-11	12-32	33-60	61-113	114-154	155-330

NOTES:						
1. J.R. SMITH MANUFACTURING COMPANY NUMBER SHOWN. JOSAM, ZURN, OR APPROVED EQUAL IS ACCEPTABLE.						

PLUMBING FIXTURE SCHEDULE										
MARK	FIXTURE	DFU	DCWS WSFU	DHWS WSFU	TOTAL WSFU	CONNECTION PIPE SIZE				REMARKS
						WASTE	VENT	DCWS	DHWS	
P-103	WATER CLOSET, FLUSH VALVE, PUBLIC	4.00	10.00	-	10.00	3.00	2.00	1.00	-	1 AND 7
P-401	LAVATORY, PUBLIC	1.00	1.50	1.50	2.00	1.50	1.50	0.375	0.375	2 AND 7
P-502	SERVICE SINK	2.00	3.00	3.00	4.00	3.00	1.50	0.50	0.50	6
P-524	SINK, CRS	1.00	1.50	1.50	2.00	1.50	1.50	0.375	0.375	3 AND 7
P-528	SINK, CRS	1.00	1.50	1.50	2.00	1.50	1.50	0.375	0.375	4 AND 7
P-609	ELECTRIC WATER COOLER	0.50	0.25	-	0.25	1.50	1.50	0.375	-	5 AND 7
P-801	WALL HYDRANT	-	-	-	-	-	-	-	-	
P-812	WATER SUPPLY BOX UNIT	-	-	-	-	-	-	-	-	
FD-1	FLOOR DRAIN	2.00	-	-	-	2.00	1.50	-	-	

NOTES:										
1. WALL HUNG, VITREOUS CHINA, SIPHON JET, FLUSH VALVE, 1.28 GPF MAXIMUM.										
2. WALL HUNG, SINGLE LEVER HANDLE CONTROL FAUCET, 0.35 GPM MAXIMUM LAMINAR FLOW DEVICE. PROVIDE AND INSTALL NEW ELECTRIC TANKLESS WATER HEATER (WH-1) UNDER LAVATORY.										
3. COUNTER-TOP MOUNT, STAINLESS STEEL, DOUBLE COMPARTMENT, SWING ARM FAUCET WITH SINGLE LEVER CONTROL, 0.5 GPM MAXIMUM LAMINAR FLOW DEVICE. PROVIDE AND INSTALL NEW ELECTRIC TANKLESS WATER HEATER (WH-2) UNDER COUNTER IN CABINET SPACE.										
4. COUNTER-TOP MOUNT, STAINLESS STEEL, SINGLE COMPARTMENT, GOOSENECK FAUCET WITH ELECTRONIC SENSOR OPERATION, 0.5 GPM MAXIMUM LAMINAR FLOW DEVICE. PROVIDE AND INSTALL NEW ELECTRIC TANKLESS WATER HEATER (WH-2) UNDER COUNTER IN CABINET SPACE.										
5. WALL HUNG, STAINLESS STEEL FOUNTAIN, MECHANICALLY COOLED, DUAL HEIGHT, WITH BOTTLE FILLER.										
6. PROVIDE AND INSTALL NEW ELECTRIC TANKLESS WATER HEATER (WH-2) ON WALL.										
7. HANDICAPPED FIXTURE. FIXTURE SHALL MEET THE AMERICANS WITH DISABILITIES ACT AND THE BARRIER-FREE HEALTHCARE INITIATIVE REQUIREMENTS.										

PLUMBING CIRCULATING PUMP SCHEDULE						
MARK	TYPE	MOTOR H.P.	VOLTAGE / PHASE	TOTAL HEAD IN FEET	GALLONS PER MINUTE	LOCATION
RP-1	IN-LINE	1/12	115 / SINGLE	8	3	MECH. 501D-102
RP-2	IN-LINE	1/12	115 / SINGLE	8	3	MECH. 501D-102
RP-3	IN-LINE	1/12	115 / SINGLE	8	3	MECH. 502F-128
RP-4	IN-LINE	1/12	115 / SINGLE	8	3	MECH. 502F-128

NOTES:						
1. BASIS OF DESIGN: GRUNDFOS. MODEL: MAGNA3 32-60F 98126822.						
2. PUMP MOTOR SHALL BE LISTED BY THE NATIONAL RECOGNIZED TEST LABORATORY (NRTL) FOR U.S.						

DOMESTIC WATER HEATER SCHEDULE						
MARK	CAPACITY	RECOVERY AT 48°F RISE	TYPE	KW	VOLTAGE/PHASE	LOCATION
WH-1	TANKLESS	0.5 GPM	ELECTRIC	3.5 KW	120 / SINGLE	P-401
WH-2	TANKLESS	0.5 GPM	ELECTRIC	3.5 KW	120 / SINGLE	P-502 P-524, P-528

NOTES:						
1. WH-1 BASIS OF DESIGN: MANUFACTURE EEMAX ACCUMIX MT004120T.						
2. WH-2 BASIS OF DESIGN: MANUFACTURE EEMAX ACCUMIX MB004120T.						
3. WATER HEATER SHALL HAVE MINIMUM FLOW 0.3 GPM AND MAXIMUM FLOW 2.5 GPM.						
4. SET WATER HEATER OUTLET TEMPERATURE AT 110 DEGREES F.						
5. CONTRACTOR SHALL PROVIDE 1070 MIXING VALVES OR ASSE 1070 COMPLAINT ELECTRIC TANKLESS WATER HEATER IF BASIS OF DESIGN IS NOT INSTALLED.						

FLOOR DRAIN SCHEDULE				
LOCATION	TYPE	SIZE	SEWER	REMARKS
HAC	FD-C OR D	3"	S	1
MECHANICAL SPACE	FD-E	4"	S	1
LEGEND:		TYPE:		
S = SANITARY		C = FINISHED AREA		
ST = STORM		D = LATEX MASTIC/THIN SET TILE		
NOTES:				
1. REFER TO DRAWINGS FOR LOCATION OF FLOOR DRAIN.				

LEGEND

GENERAL

	INDICATES ITEM TO BE PROVIDED
	DOMESTIC COLD WATER
	DOMESTIC HOT WATER (130°F)
	DOMESTIC COLD WATER RECIRCULATING
	NATURAL GAS PIPING
	RAINLEADER PIPING
	OVERFLOW RAINLEADER PIPING
	STORM DRAINAGE PIPING
	SOIL, WASTE OR SANITARY SEWER
	VENT PIPING
	PITCH DOWN IN DIRECTION OF ARROW
	PIPE TURNING DOWN
	PIPE TURNING UP
	BRANCH BOTTOM CONNECTION
	BRANCH SIDE CONNECTION
	BRANCH TOP CONNECTION
	CLEANOUT
	CLEANOUT, FLOOR TYPE
	CLEANOUT, GRADE TYPE
	FLOOR DRAIN WITH DEEP SEAL P-TRAP
	UNION
	BALANCING VALVE
	BALL VALVE
	VENT THROUGH ROOF - DIAGRAMMATIC
	WATER HAMMER ARRESTOR

VALVES AND ACCESSORIES

	AUTOMATIC AIR VENT
	AUTOMATIC FLOW CONTROL VALVE
	BACKFLOW PREVENTER (BFD)
	BALL VALVE
	BUTTERFLY VALVE
	CAPPED PIPE
	CHECK VALVE
	CONCENTRIC REDUCER
	DIRECTION OF FLOW
	ECCENTRIC REDUCER
	FLANGED CONNECTION
	FLEXIBLE CONNECTION
	FLOW METER

ABBREVIATIONS

AC	ABOVE CEILING
ADA	AMERICANS WITH DISABILITIES ACT
ARCH	ARCHITECTURAL
BF	BELOW FLOOR
BG	BELOW GRADE
DOWR	DOMESTIC COLD WATER RETURN
DCWS	DOMESTIC COLD WATER SUPPLY
DFU	DRAINAGE FUXTURE UNITS
DIA	DIAMETER
DN	DOWN
DWG	DRAWING
EX	EXISTING
FCO	FLOOR CLEANOUT
FU	FIXTURE UNITS
GPM	GALLONS PER MINUTE
HB	HOSE BIBB
KW	KILLOWATTS
MISC	MISCELLANEOUS
MV	MIXING VALVE
NIC	NOT IN CONTRACT
OD	OVERFLOW DRAIN
RD	ROOF DRAIN
RL	RAINLEADER
RP	RECIRCULATION PUMP
TYP	TYPICAL
WSFU	WATER SUPPLY FIXTURE UNITS

GENERAL NOTES

1. PROVIDE ALL LABOR, MATERIAL, AND EQUIPMENT REQUIRED FOR THE COMPLETION AND OPERATION OF ALL SYSTEMS IN THIS SECTION OF WORK IN ACCORDANCE WITH CONTRACT PLANS, SPECIFICATIONS AND ALL APPLICABLE STATE AND LOCAL CODES.
2. PROVIDE A COMPLETE SYSTEM OF HOT AND COLD WATER, AND WASTE AND VENT PIPING TO ALL FIXTURES WITHIN THE BUILDING.
3. ALL WATER, SOIL, WASTE, AND VENT PIPING LINES SHALL BE CONCEALED IN THE BUILDING CONSTRUCTION, EXCEPT WHERE INDICATED OTHERWISE.
4. COORDINATE WITH ARCHITECTURAL DRAWINGS BEFORE ROUGHING-IN PLUMBING FIXTURES.
5. ROUTING OF ALL PIPING SHALL BE COORDINATED WITH OTHER TRADES.
6. FIXTURES AND EQUIPMENT ARE INDICATED IN THE PLUMBING FIXTURE SCHEDULE, WATER HAMMER ARRESTOR SCHEDULE, PUMP SCHEDULE, AND AS SPECIFIED IN THE SPECIFICATIONS AS A GUIDE FOR GENERAL QUALITY AND PERFORMANCE DESIRED. FIXTURES AND EQUIPMENT BY OTHERS ARE ACCEPTABLE PROVIDED THEY ARE OF THE SAME TYPE, QUALITY AND OPERATION.
7. ALL PLUMBING VENTS WITHIN A 15'-0" RADIUS OF ANY ROOF TOP UNIT OR FRESH AIR INTAKE SHALL BE OFFSET TO CLEAR OUTSIDE THE RADIUS.
8. PROTECT COPPER PIPING AGAINST CONTACT WITH MASONRY OR DISSIMILAR METALS. HANGERS, SUPPORTS, ANCHORS AND CLIPS SHALL BE COPPER OR COPPER PLATED.
9. BASIS-OF -DESIGN FIXTURES AND EQUIPMENT LISTED IN THE SCHEDULES, ON THIS SHEET, BY MANUFACTURER AND MODEL NUMBER INDICATE GENERAL QUALITY AND PERFORMANCE CHARACTERISTICS REQUIRED. ITEMS HAVING EQUAL CHARACTERISTICS BY OTHER MANUFACTURERS WILL BE ACCEPTABLE.
10. PROVIDE SHUT-OFF VALVES AND BACKFLOW PREVENTION DEVICES AT ALL CONNECTIONS TO NON-POTABLE WATER SYSTEMS.
11. THESE DRAWINGS ARE DIAGRAMMATIC ONLY AND NOT TO BE SCALED. FIELD VERIFY ALL DIMENSIONS, PIPE SIZES, LOCATIONS, AND INVERTS. REFER TO ARCHITECTURAL DRAWINGS FOR DIMENSIONS AND LOCATIONS OF ALL PLUMBING FIXTURES.
12. PROVIDE CLEANOUTS AS REQUIRED BY THE INTERNATIONAL PLUMBING CODE, LOCAL CODES, VA PLUMBING DESIGN MANUAL, AT BOTTOM OF STACKS, AND WHERE HORIZONTAL SANITARY SEWER PIPING CHANGES DIRECTION OVER 45 DEGREES.
13. NEW 2 INCH SANITARY SEWER PIPING SHALL BE SLOPED A MINIMUM OF TWO PERCENT, ONE-QUARTER INCH PER FOOT. NEW 3 INCH, 4 INCH, AND 6 INCH SANITARY SEWER PIPING SHALL BE SLOPED A MINIMUM OF ONE PERCENT, ONE-EIGHTH INCH PER FOOT.
14. DOMESTIC COLD WATER SUPPLY, DOMESTIC COLD WATER RETURN, HORIZONTAL STORM DRAIN PIPING SHALL BE INSULATED.

CONSULTANTS:	
Revisions:	Date:

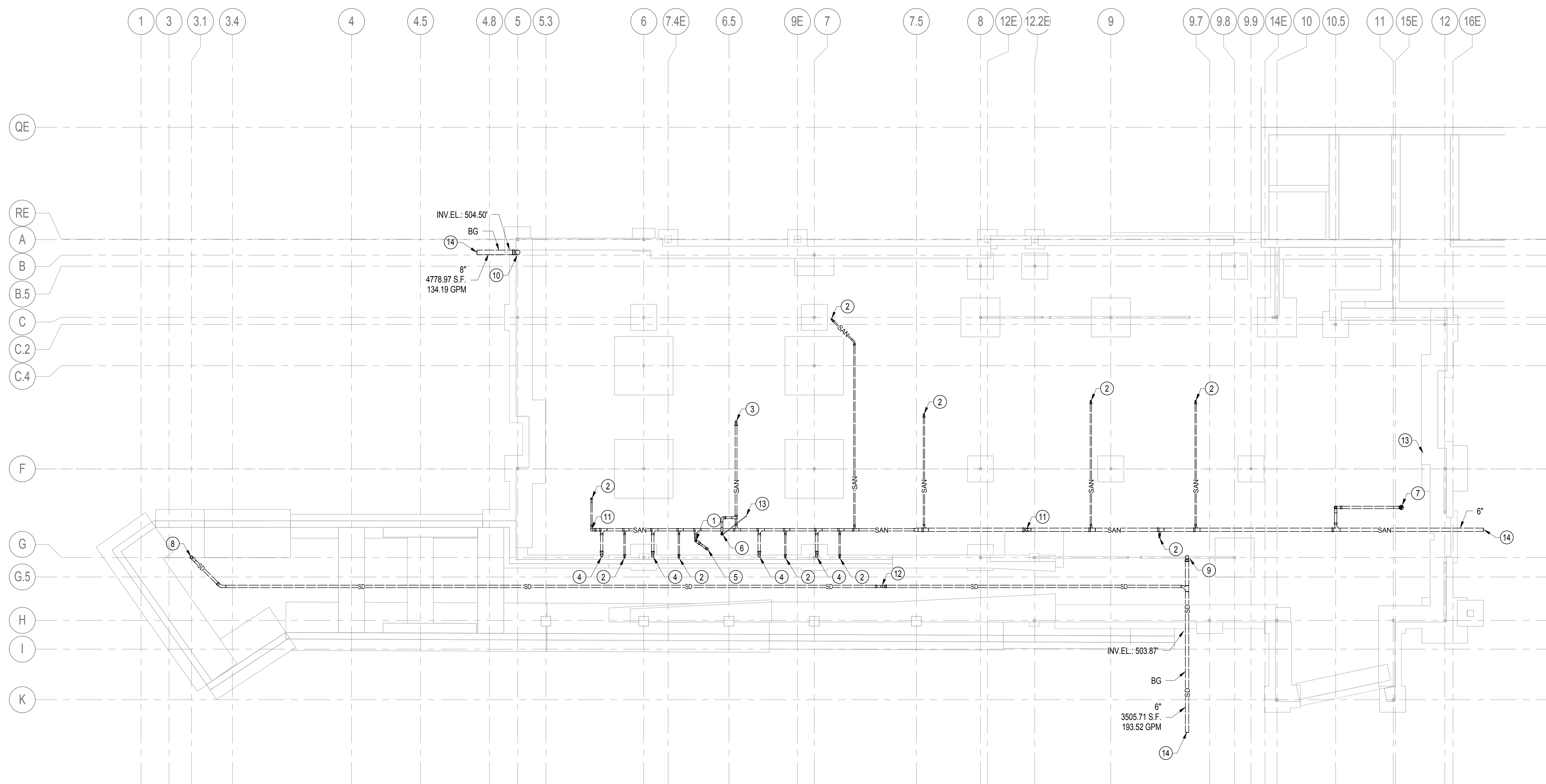


ARCHITECT/ENGINEERS:	
590 MEANS ST NW ATLANTA, GA 30318	

Drawing Title:	PLUMBING LEGEND, GENERAL NOTES, AND SCHEDULES
Approved Project Director:	

Project Title:	CONSTRUCT DOM CLINIC AND CLC ADMINISTRATION ADDITION
Project Number:	613-121
Building Number:	501D & 502F
Drawing Number:	P001
Date:	June 27, 2018
Checked:	GTK
Drawn:	DLB
Dwg.	of

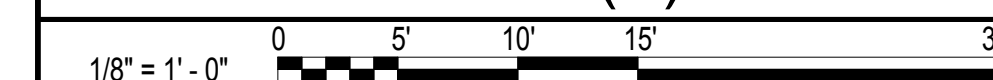
BID DOCUMENTS
OFFICE OF CONSTRUCTION AND FACILITIES MANAGEMENT



GENERAL NOTES

- A. PROVIDE CLEANOUT(S) AS REQUIRED BY INTERNATIONAL PLUMBING CODE, LOCAL CODES, VALUING DESIGN MANUAL, VA PLUMBING DESIGN GUIDE AND/OR HORIZONTAL SANITARY SEWER/WASTE PIPING CHANGES DIRECTIONS OVER 45 DEGREES
- B. 2" SANITARY SEWER/WASTE PIPING SHALL BE SLOPED A MINIMUM TWO PERCENT, ONE-QUARTER INCH PER FOOT. 3" THRU 6" SANITARY SEWER/WASTE PIPING SHALL BE SLOPED A MINIMUM ONE PERCENT, ONE-EIGHTH INCH PER FOOT.
- C. REFER TO ISOMETRIC RISER DIAGRAM - WASTE DRAIN, AND JUMP PIPING ON DRAWING PL201 FOR PIPE SIZES.

1. 2"V-UP.
2. 2"SS-UP.
3. 3"SS-UP.
4. 4"SS-UP TO FICTURE P-103 WATER CLOSET CARRIER.
5. 3"SS-UP TO FICTURE P-502.
6. 4"SS-UP TO FLOOR DRAIN TYPE C OR TYPE D.
7. 4"SS-UP TO FLOOR DRAIN TYPE E.
8. 4"SD-UP.
9. 6"SD-UP.
10. 8"SD-UP.
11. 4"SS-UP TO FLOOR CLEANOUT.
12. 4"SD-UP TO FLOOR CLEANOUT.
13. 1/2" TRAP PRIMER PIPING UP AND ROUTE TO FLOOR DRAIN.
14. REFER TO CIVIL FOR CONTINUATION OF PIPING.



FOUNDATION PLAN - CLC ADMIN

--	--	--	--	--	--	--	--	--	--	--	--	--	--	--	--	--	--	--	--	--	--	--	--	--	--	--	--	--	--	--	--	--	--	--	--	--	--	--	--	--	--	--	--	--	--	--	--	--	--	--	--	--	--	--	--	--	--	--	--	--	--	--	--	--	--	--	--	--	--	--	--	--	--	--	--	--	--	--	--	--	--	--	--	--	--	--	--	--	--	--	--	--	--	--	--	--	--	--	--	--	--	--	--	--	--	--	--	--	--	--	--	--	--	--	--	--	--	--	--	--	--	--	--	--	--	--	--	--	--	--	--	--	--	--	--	--	--	--	--	--	--	--	--	--	--	--	--	--	--	--	--	--	--	--	--	--	--	--	--	--	--	--	--	--	--	--	--	--	--	--	--	--	--	--	--	--	--	--	--	--	--	--	--	--	--	--	--	--	--	--	--	--	--	--	--	--	--	--	--	--	--	--	--	--	--	--	--	--	--	--	--	--	--	--	--	--	--	--	--	--	--	--	--	--	--	--	--	--	--	--	--	--	--	--	--	--	--	--	--	--	--	--	--	--	--	--	--	--	--	--	--	--	--	--	--	--	--	--	--	--	--	--	--	--	--	--	--	--	--	--	--	--	--	--	--	--	--	--	--	--	--	--	--	--	--	--	--	--	--	--	--	--	--	--	--	--	--	--	--	--	--	--	--	--	--	--	--	--	--	--	--	--	--	--	--	--	--	--	--	--	--	--	--	--	--	--	--	--	--	--	--	--	--	--	--	--	--	--	--	--	--	--	--	--	--	--	--	--	--	--	--	--	--	--	--	--	--	--	--	--	--	--	--	--	--	--	--	--	--	--	--	--	--	--	--	--	--	--	--	--	--	--	--	--	--	--	--	--	--	--	--	--	--	--	--	--	--	--	--	--	--	--	--	--	--	--	--	--	--	--	--	--	--	--	--	--	--	--	--	--	--	--	--	--	--	--	--	--	--	--	--	--	--	--	--	--	--	--	--	--	--	--	--	--	--	--	--	--	--	--	--	--	--	--	--	--	--	--	--	--	--	--	--	--	--	--	--	--	--	--	--	--	--	--	--	--	--	--	--	--	--	--	--	--	--	--	--	--	--	--	--	--	--	--	--	--	--	--	--	--	--	--	--	--	--	--	--	--	--	--	--	--	--	--	--	--	--	--	--	--	--	--	--	--	--	--	--	--	--	--	--	--	--	--	--	--	--	--	--	--	--	--	--	--	--	--	--	--	--	--	--	--	--	--	--	--	--	--	--	--	--	--	--	--	--	--	--	--	--	--	--	--	--	--	--	--	--	--	--	--	--	--	--	--	--	--	--	--	--	--	--	--	--

three inches = one foot

one and one half inches = one foot

one inch = one foot

three quarters inch = one foot

one half inch = one foot

three eighths inch = one foot

one quarter inch = one foot

one eighth inch = one foot

GENERAL NOTES

A. PROVIDE CLEANOUT(S) AS REQUIRED BY INTERNATIONAL PLUMBING CODE, LOCAL CODES, VA PLUMBING DESIGN MANUAL, VA PLUMBING DESIGN GUIDE AND/OR HORIZONTAL SANITARY SEWER/WASTE PIPING CHANGES DIRECTIONS OVER 45 DEGREES.

B. 2" SANITARY SEWER/WASTE PIPING SHALL BE SLOPED A MINIMUM TWO PERCENT, ONE-QUARTER INCH PER FOOT. 3" THRU 6" SANITARY SEWER/WASTE PIPING SHALL BE SLOPED A MINIMUM ONE PERCENT, ONE-EIGHTH INCH PER FOOT.

C. REFER TO ISOMETRIC RISER DIAGRAM - WASTE DRAIN, AND VENT PIPING ON DRAWING PL201 FOR PIPE SIZES.

KEY NOTES

1. 4"SS-UP TO CLEANOUT.

2. 2"SS-UP.

3. 3"SS-UP.

4. 4"SS-UP.

5. 3"SS-UP TO FIXTURE P-502.

6. 3"SS-UP TO FLOOR DRAIN TYPE C OR TYPE D.

7. 4"SS-UP TO FLOOR DRAIN TYPE E.

8. 3"V-UP.

9. 4"SD-UP.

10. 1/2" TRAP PRIMER PIPING UP AND ROUTE TO FLOOR DRAIN.

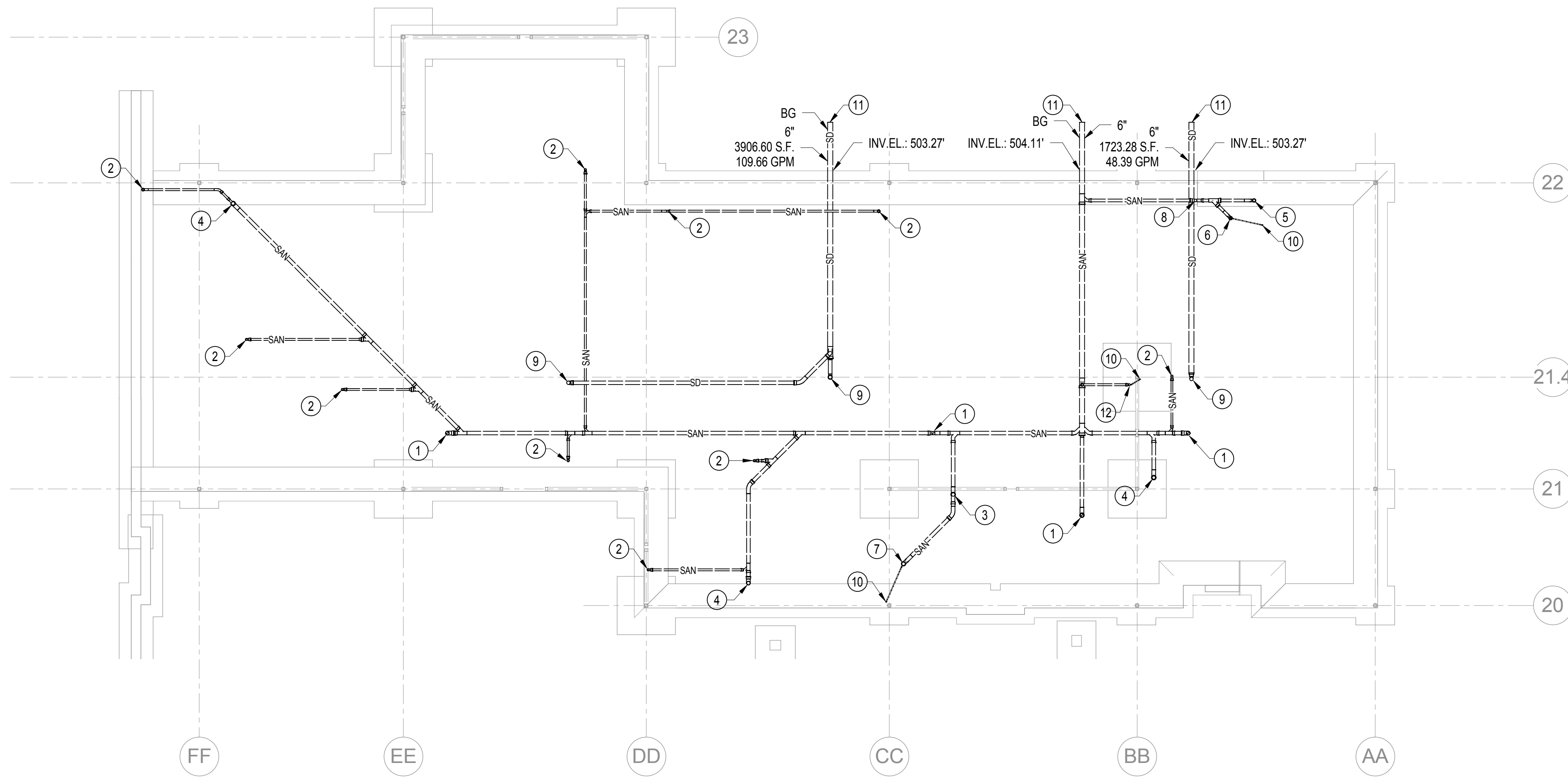
11. REFER TO CIVIL FOR CONTINUATION OF PIPING.

12. 2"SS-UP TO FLOOR DRAIN TYPE C OR TYPE D.

GRAPHIC SCALE(S)

1/8" = 1'-0"

05'10'15'30'



FOUNDATION PLAN - DOM CLINIC

Revisions:

Date:

CONSULTANTS:

INNOVATIVE ENGINEERING INCORPORATED

CLARK NEXSEN

ARCHITECT/ENGINEERS:

TOLAND MIZELL MOLNAR

590 MEANS ST NW ATLANTA, GA 30318

Drawing Title:

FOUNDATION WASTE, DRAIN, AND VENT PIPING PLAN - DOM CLINIC

Approved Project Director:

Project Title:

CONSTRUCT DOM CLINIC AND CLC ADMINISTRATION ADDITION

Location:

MARTINSBURG, WV

Date:

June 27, 2018

Checked:

GTK

Drawn:

DLB

Project Number:

613-121

Building Number:

502F

Drawing Number:

PL102

Dwg. of

BID DOCUMENTS

OFFICE OF CONSTRUCTION AND FACILITIES MANAGEMENT



- A. PROVIDE CLEANOUT(S) AS REQUIRED BY INTERNATIONAL PLUMBING CODE, LOCAL CODES, VA PLUMBING DESIGN MANUAL, VA PLUMBING DESIGN GUIDE AND/OR HORIZONTAL SANITARY SEWER/STORM PIPING CHANGES DIRECTIONS OVER 45 DEGREES.
- B. 2" SANITARY SEWER PIPING SHALL BE SLOPED A MINIMUM TWO PERCENT, ONE-QUARTER INCH PER FOOT. 3" THRU 6" SANITARY SEWER/STORM PIPING SHALL BE SLOPED A MINIMUM ONE PERCENT, ONE-EIGHTH INCH PER FOOT.
- C. 4" AND 6" DRAIN, AND 4" TP PIPING TO ISOMETRIC RISER DIAGRAM ON DRAWING PL201 FOR SANITARY SEWER/WATER PIPE SIZES.
- D. DOMESTIC WATER DISTRIBUTION RISER TO ISOMETRIC RISER DIAGRAM ON DRAWING PL301 FOR DOMESTIC WATER PIPE SIZES.
- E. ALL HORIZONTAL STORM DRAIN PIPING, OVERFLOW PIPING, RAIN WATER LEADER, BATH ROOM FLOOR DRAIN, AND EMERGENCY ROOF DRAIN ABOVE CEILING SHALL BE INSULATED.

1. CONNECT DOMESTIC COLD WATER SUPPLY TO FIRE PROTECTION SUPPLY RISER ENTRANCE BELOW DOUBLE CHECK VALVE ASSEMBLY. REFER TO DETAIL ON THIS DRAWING.
2. PROVIDE AND INSTALL DUPLEX REDUCED PRESSURE BACKFLOW PREVENTER AT APPROXIMATE LOCATION INDICATED. REFER TO DETAIL ON THIS DRAWING.
3. PROVIDE AND INSTALL ANALOG THERMOMETER, TEMPERATURE SENSOR, AND PETE'S PLUG ON DOMESTIC COLD WATER PIPING AT APPROXIMATE LOCATION INDICATED. SENSORS SHALL BE CONNECTED TO BUILDING CONTROLS SYSTEM. COORDINATE WITH THE CONTROLS CONTRACTOR.
4. PROVIDE AND INSTALL BALANCING VALVE (CIRCUIT SETTER) ABOVE CEILING AT APPROXIMATE LOCATION INDICATED. DOMESTIC WATER CIRCULATION CIRCUITS SHALL BE TESTED, BALANCED, AND CERTIFIED BY COMPANY WHO SPECIALIZES IN SUCH SERVICES. A TEST AND BALANCE REPORT SHALL BE PROVIDED INDICATING A MINIMUM OF 3 GPM FLOW OF DOMESTIC COLD WATER.
5. PROVIDE AND INSTALL COLD WATER CIRCULATING PUMP RP-1 AND RP-2. CONNECT TO DDC TIMED CONTROLLED ALTERNATING STARTER. REFER TO CIRCULATING PUMP SCHEDULE ON DRAWING P001 AND DETAIL ON THIS DRAWING.
6. PROVIDE AND INSTALL 3" FLOOR DRAIN TYPE C OR TYPE D. PROVIDE TRAP PRIMER DEVICE.
7. PROVIDE AND INSTALL 4" FLOOR DRAIN TYPE E. PROVIDE TRAP PRIMER DEVICE.
8. 2"SS-DN.
9. 3"SS-DN.
10. 4"SS-DN.
11. 2"V-DN AND 3"V-UP TO VENT THRU ROOF.
12. CHECK VALVE.
13. 3"V-UP TO VENT THRU ROOF.
14. 2"V-DN.
15. 3"SD-UP TO ROOF DRAIN.
16. 3"OD-UP TO EMERGENCY ROOF DRAIN.
17. 4"SD-UP TO ROOF DRAIN.
18. 4"OD-UP TO EMERGENCY ROOF DRAIN.
19. 6"SD-DN.
20. 8"SD-DN.
21. 6" DOWNSPOUT NOZZLE. MOUNT CENTERLINE AT 113" ABOVE FINISHED GRADE.
22. 8" DOWNSPOUT NOZZLE. MOUNT CENTERLINE AT 113" ABOVE FINISHED GRADE.
23. 4"SD-UP TO ROOF DRAIN.
24. 4"SD-DN.
25. PROVIDE AND INSTALL NEW TRAP PRIMER DEVICE AND ALL PIPING TO FLOOR DRAIN.
26. PROVIDE AND INSTALL NEW 3/4" NON-FREEZE WALL HYDRANT (P-801). MOUNT CENTERLINE OF WALL HYDRANT AT 24" ABOVE FINISHED GRADE.

1/8" = 1' - 0"



TRIAD
TRIAD ENGINEERING, INC.

CLARK NEXSEN



ARCHITECT/ENGINEERS:



590 MEANS ST NW ATLANTA, GA 30318

Approved Project Director:

Date:

Building Number:

501D

Drawing Number:

PL103

2

BID DOCUMENTS

**OFFICE OF
CONSTRUCTION
AND FACILITIES
MANAGEMENT**







three inches = one foot

one and one half inches = one foot

one inch = one foot

three quarters inch = one foot

one half inch = one foot

three eighths inch = one foot

one quarter inch = one foot

one eighth inch = one foot

GENERAL NOTES

A. PROVIDE CLEANOUT(S) AS REQUIRED BY INTERNATIONAL PLUMBING CODE, LOCAL CODES, VA PLUMBING DESIGN MANUAL, VA PLUMBING DESIGN GUIDE AND/OR HORIZONTAL SANITARY SEWER/WASTE PIPING CHANGES DIRECTIONS OVER 45 DEGREES.

B. 2" SANITARY SEWER/WASTE PIPING SHALL BE SLOPED A MINIMUM TWO PERCENT, ONE-QUARTER INCH PER FOOT. 3" THRU 6" SANITARY SEWER/WASTE PIPING SHALL BE SLOPED A MINIMUM ONE PERCENT, ONE-EIGHTH INCH PER FOOT.

C. WASTE DRAIN, AND VENT PIPING REFER TO ISOMETRIC RISER DIAGRAM ON DRAWING PL201 FOR SANITARY SEWER/WASTE PIPE SIZES.

D. ALL HORIZONTAL STORM DRAIN PIPING, OVERFLOW DRAIN PIPING, RAIN WATER LEADER, BOTTOM OF ROOF DRAIN, AND EMERGENCY ROOF DRAIN ABOVE CEILING SHALL ME INSULATED.

KEY NOTES

1. 3" VENT THRU ROOF.

2. 4" ROOF DRAIN.

3. 4" EMERGENCY ROOF DRAIN.

GRAPHIC SCALE(S)

1/8" = 1' - 0"

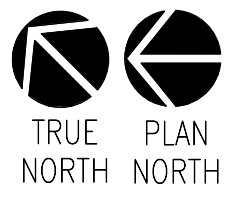
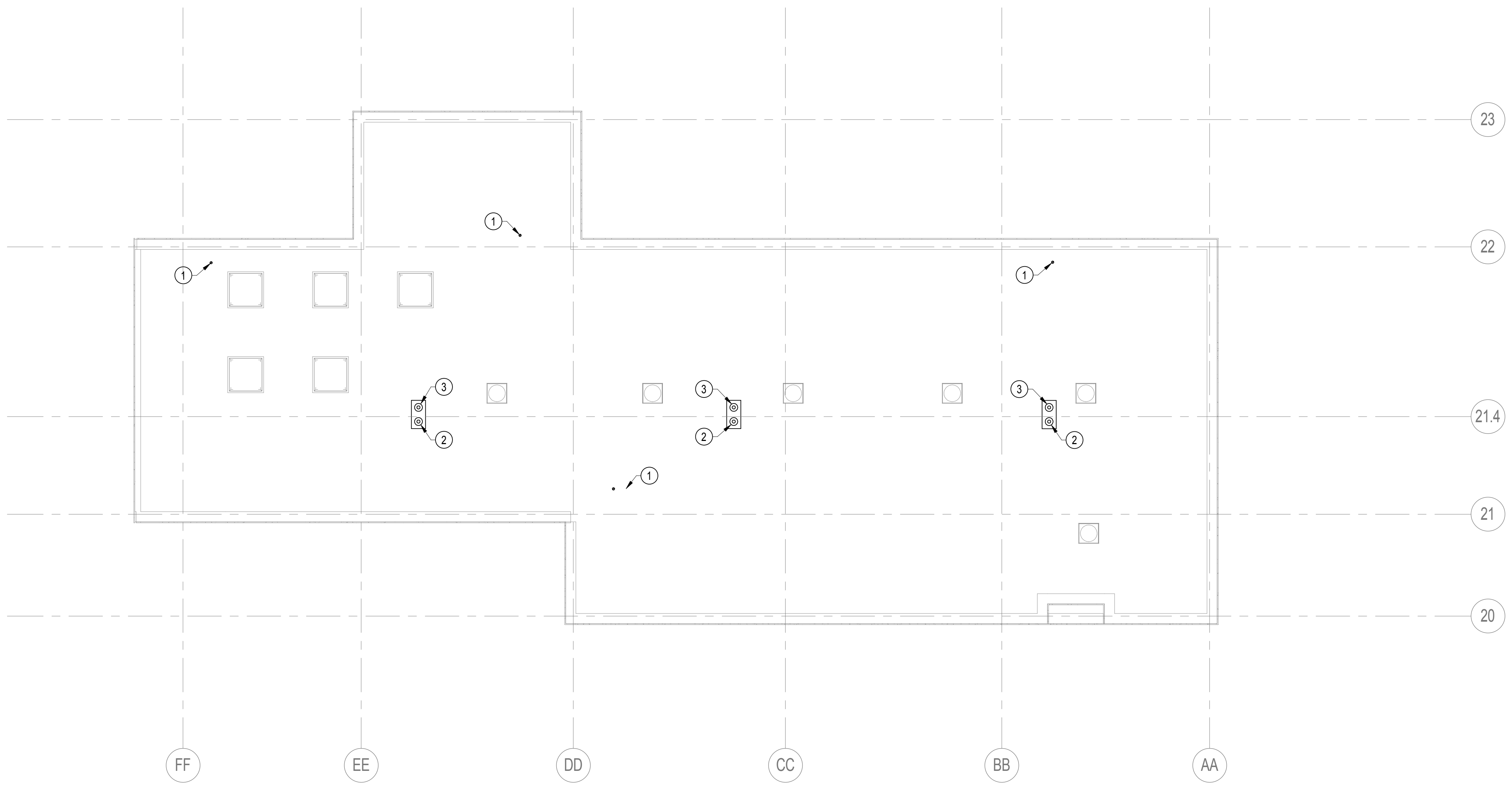
0

5'

10'

15'

30'



ROOF PLAN - DOM CLINIC

Revisions:

Date:

CONSULTANTS:

INNOVATIVE ENGINEERING INCORPORATED

CLARK NEXSEN

ARCHITECT/ENGINEERS:

TOLAND MIZELL MOLNAR

590 MEANS ST NW ATLANTA, GA 30318

Drawing Title:

ROOF PLAN PLUMBING PIPING PLAN - DOM CLINIC

Approved Project Director:

Project Title:

CONSTRUCT DOM CLINIC AND CLC ADMINISTRATION ADDITION

Location:

MARTINSBURG, WV

Date:

June 27, 2018

Checked:

GTK

Drawn:

DLB

Project Number:

613-121

Building Number:

502F

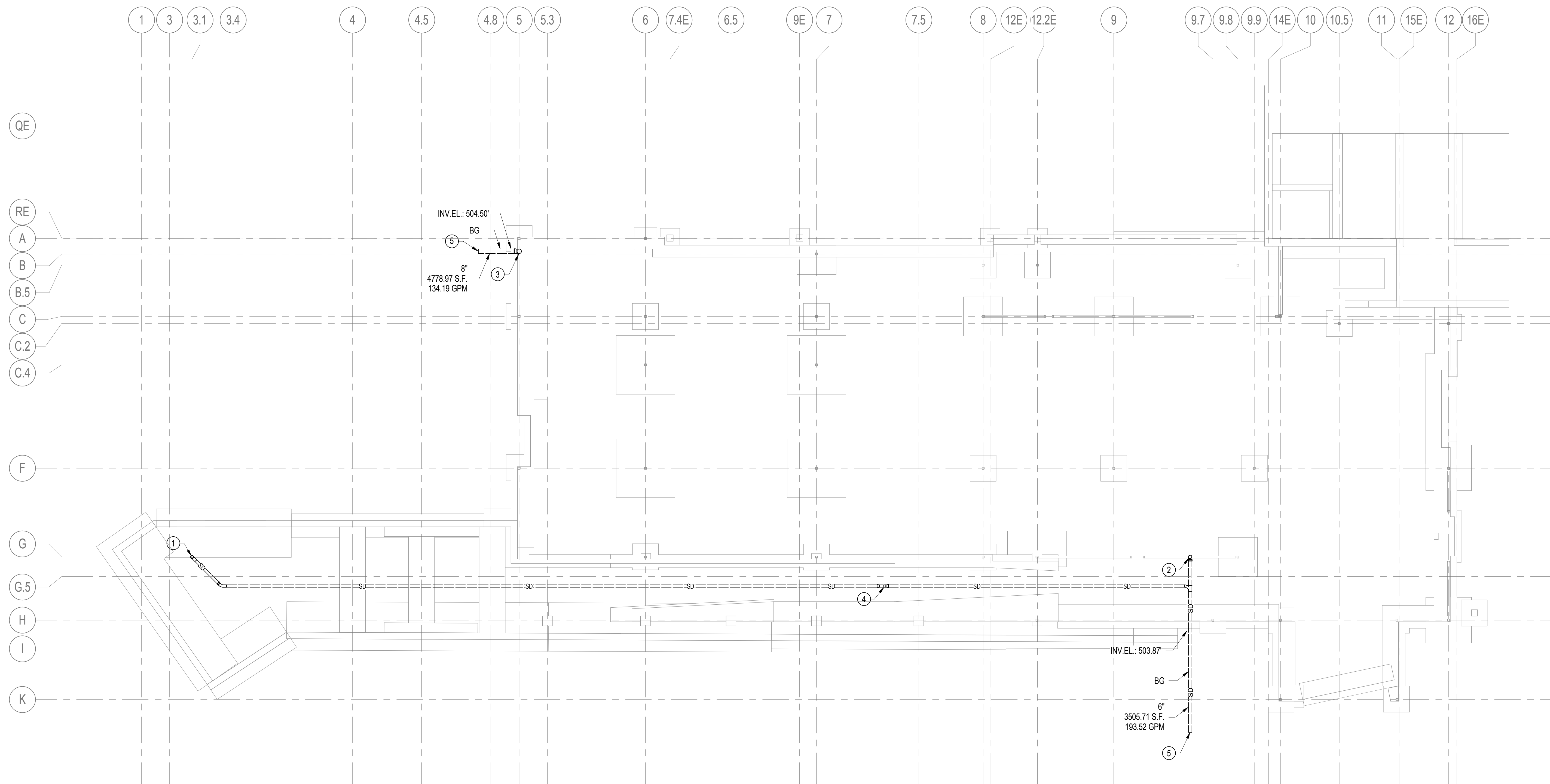
Drawing Number:

PL106

Dwg. of

BID DOCUMENTS




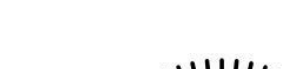


OFFICE OF CONSTRUCTION AND FACILITIES MANAGEMENT



GENERAL NOTES

- A. PROVIDE CLEANOUT(S) AS REQUIRED BY INTERNATIONAL PLUMBING CODE, LOCAL CODES, VA PLUMBING DESIGN MANUAL, VA PLUMBING DESIGN GUIDE AND/OR HORIZONTAL SANITARY SEWER/WASTE PIPING CHANGES DIRECTIONS OVER 45 DEGREES.
- B. 2" SEWER/WASTE PIPING SHALL BE SLOPED A MINIMUM TWO PERCENT, ONE-QUARTER INCH PER FOOT. 3" THRU 6" SEWER/WASTE PIPING SHALL BE SLOPED A MINIMUM ONE PERCENT, ONE-EIGHTH INCH PER FOOT.

FOUNDATION PLAN - CLC ADMIN ALTERNATE NO. 5

		CONSULTANTS:		ARCHITECT/ENGINEERS:		Drawing Title:		Project Title:		Project Number:		OFFICE OF CONSTRUCTION AND FACILITIES MANAGEMENT	
		<div><div> INNOVATIVE ENGINEERING INCORPORATED</div><div> TRIAD ENGINEERING, INC.</div><div> CLARK NEXSEN</div></div>		<div></div> <div> TOLAND MIZELL MOLNAR</div> <div>590 MEANS ST NW ATLANTA, GA 30318</div>		FOUNDATION WASTE, DRAIN, AND VENT PIPING PLAN - CLC ADMIN BID ALTERNATE 5		CONSTRUCT DOM CLINIC AND CLC ADMINISTRATION ADDITION		613-121			
						Approved Project Director:		Location:		Building Number:			
								MARTINSBURG, WV		501D			
Revisions:		Date:						Date:		Checked:		Drawing:	
								June 27, 2018		GTK		DLB	
										Drawing Number:			
										PL107			
										Dwg. of			

three inches = one foot

one and one half inches = one foot

one inch = one foot

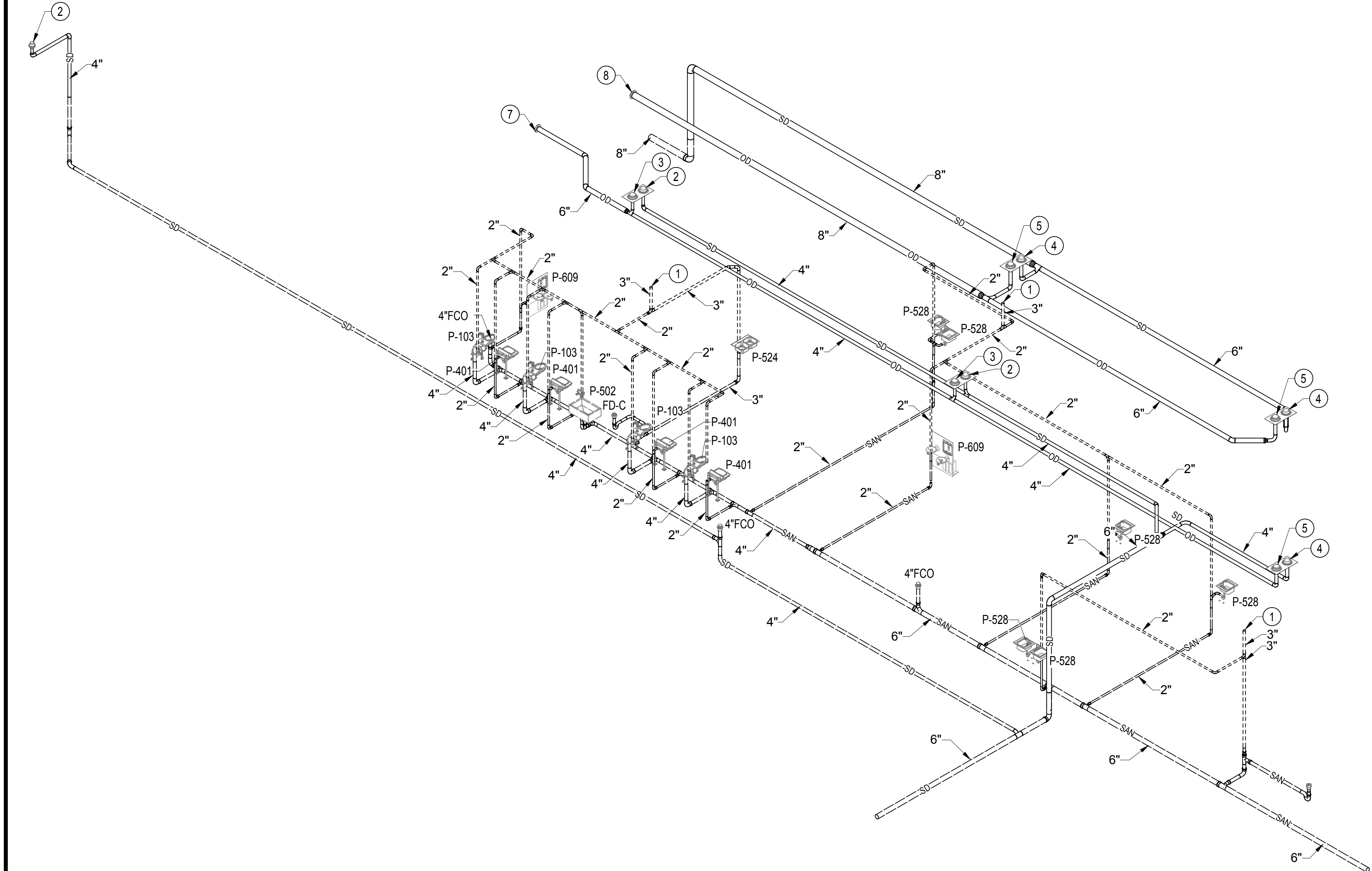
three quarters inch = one foot

one half inch = one foot

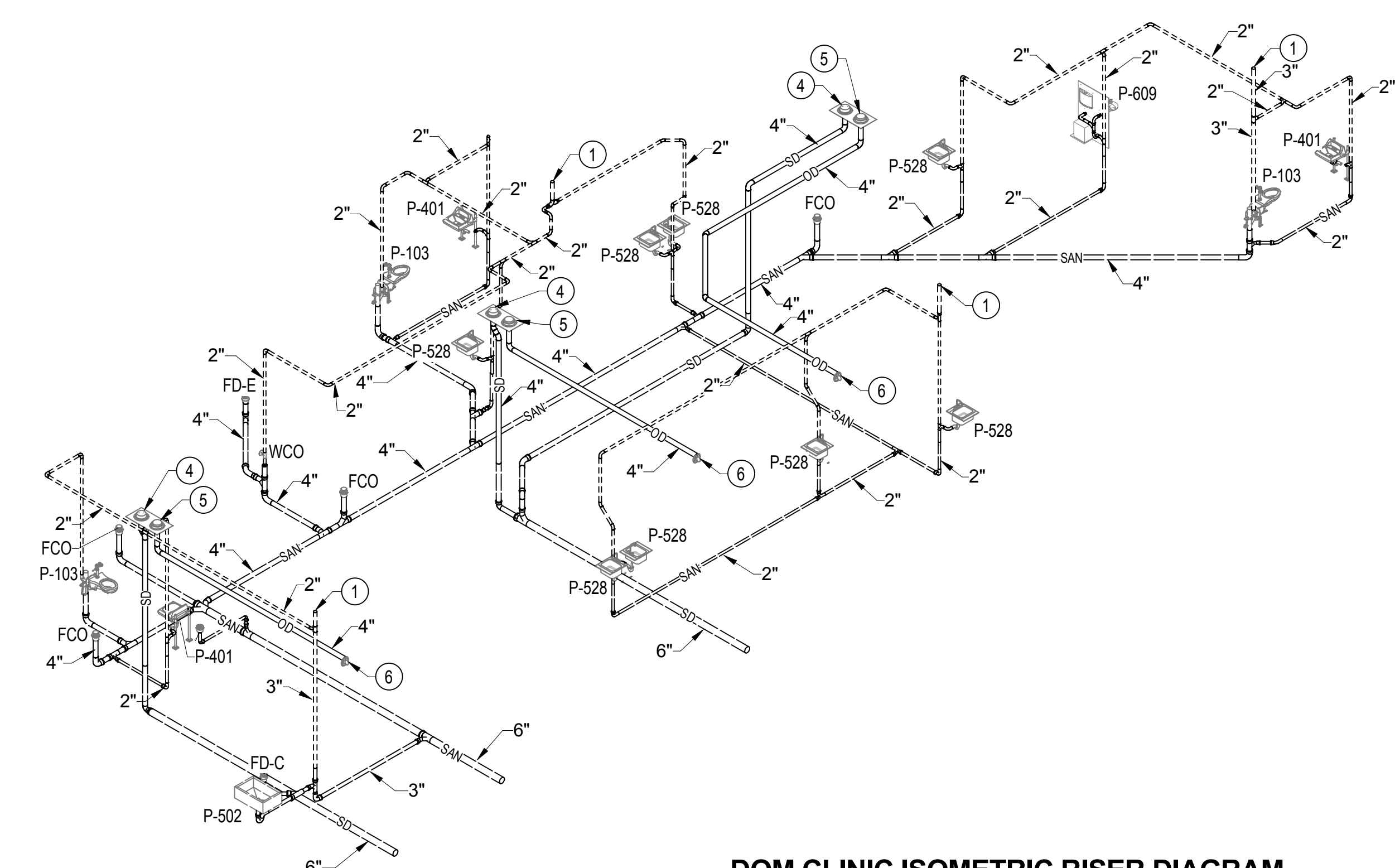
three eighths inch = one foot

one quarter inch = one foot

one eighth inch = one foot



CLC ADMIN ISOMETRIC RISER DIAGRAM



DOM CLINIC ISOMETRIC RISER DIAGRAM

ISOMETRIC RISER DIAGRAM - WASTE, DRAIN, AND VENT PIPING
NO SCALE

GENERAL NOTES

A. PROVIDE CLEANOUT(S) AS REQUIRED BY INTERNATIONAL PLUMBING CODE, LOCAL CODES, VA PLUMBING DESIGN MANUAL, VA PLUMBING DESIGN GUIDE AND/OR HORIZONTAL SANITARY SEWER/WASTE PIPING CHANGES DIRECTIONS OVER 45 DEGREES.

B. 2" SANITARY SEWER/WASTE PIPING SHALL BE SLOPED A MINIMUM TWO PERCENT, ONE-QUARTER INCH PER FOOT. 3" THRU 6" SANITARY SEWER/WASTE PIPING SHALL BE SLOPED A MINIMUM ONE PERCENT, ONE-EIGHTH INCH PER FOOT.

C. HORIZONTAL STORM DRAIN PIPING SHALL BE INSULATED.

KEY NOTES

1. 3" VENT THRU ROOF.

2. 3" ROOF DRAIN.

3. 3" EMERGENCY ROOF DRAIN.

4. 4" ROOF DRAIN.

5. 4" EMERGENCY ROOF DRAIN.

6. 4" RAIN WATER NOZZLE. MOUNT CENTERLINE AT 155" ABOVE FINISHED GRADE.

7. 6" RAIN WATER NOZZLE. MOUNT CENTERLINE AT 113" ABOVE FINISHED GRADE.

8. 8" RAIN WATER NOZZLE. MOUNT CENTERLINE AT 113" ABOVE FINISHED GRADE.

Revisions:

Date:

CONSULTANTS:

INNOVATIVE ENGINEERING INCORPORATED

CLARK NEXSEN

ARCHITECT/ENGINEERS:

TOLAND MIZELL MOLNAR

590 MEANS ST NW ATLANTA, GA 30318

Drawing Title:

WASTE, DRAIN, AND VENT PIPING ISOMETRIC RISER DIAGRAMS

Approved Project Director:

Project Title:

CONSTRUCT DOM CLINIC AND CLC ADMINISTRATION ADDITION

Location:

MARTINSBURG, WV

Date:

June 27, 2018

Checked:

GTK

Drawn:

DLB

Project Number:

613-121

Building Number:

501D & 502F

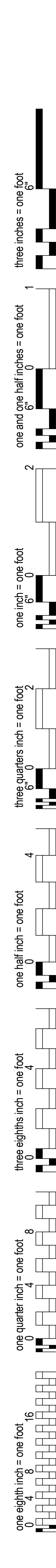
Drawing Number:

PL201

Dwg. of

BID DOCUMENTS

OFFICE OF CONSTRUCTION AND FACILITIES MANAGEMENT



DOMESTIC WATER DISTRIBUTION ISOMETRIC RISER DIAGRAMS



A. DOMESTIC COLD WATER SUPPLY AND DOMESTIC COLD WATER RETURN PIPING SHALL BE INSULATED.

1. PROVIDE AND INSTALL NEW WATER HAMMER ARRESTER. REFER TO SCHEDULE ON DRAWING P001.
2. PROVIDE AND INSTALL BALANCING VALVE (CIRCUIT SETTER) ABOVE CEILING AT APPROXIMATE LOCATION INDICATED. DOMESTIC WATER CIRCULATION CIRCUITS SHALL BE TESTED, BALANCED, AND CERTIFIED BY A COMPANY WHO SPECIALIZES IN SUCH SERVICES. A TEST AND BALANCE REPORT SHALL BE PROVIDED INDICATING A MINIMUM OF 3 GPM FLOW OF DOMESTIC COLD WATER.
3. PROVIDE AND INSTALL ANALOG THERMOMETER, TEMPERATURE SENSOR, AND PETE'S PLUG ON DOMESTIC COLD WATER PIPING AT APPROXIMATE LOCATION INDICATED. SENSORS SHALL BE CONNECTED TO BUILDING CONTROLS SYSTEM. COORDINATE WITH THE CONTROLS CONTRACTOR.
4. FLOOD AND INSTALL NEW TRAP PRIMER DEVICE AND ALL PIPING TO FLOOR DRAIN.
5. PROVIDE AND INSTALL NEW 3/4" NON-FREEZE WALL HYDRANT (P-801). MOUNT CENTER OF WALL HYDRANT AT 24" ABOVE FINISHED GRADE.

--	--	--	--	--	--	--	--	--	--	--	--	--	--	--	--	--	--	--	--	--	--	--	--	--	--	--	--	--	--	--	--	--	--	--	--	--	--	--	--	--	--	--	--	--	--	--	--	--	--	--	--	--	--	--	--	--	--	--	--	--	--	--	--	--	--	--	--	--	--	--	--	--	--	--	--	--	--	--	--	--	--	--	--	--	--	--	--	--	--	--	--	--	--	--	--	--	--	--	--	--	--	--	--	--	--	--	--	--	--	--	--	--	--	--	--	--	--	--	--	--	--	--	--	--	--	--	--	--	--	--	--	--	--	--	--	--	--	--	--	--	--	--	--	--	--	--	--	--	--	--	--	--	--	--	--	--	--	--	--	--	--	--	--	--	--	--	--	--	--	--	--	--	--	--	--	--	--	--	--	--	--	--	--	--	--	--	--	--	--	--	--	--	--	--	--	--	--	--	--	--	--	--	--	--	--	--	--	--	--	--	--	--	--	--	--	--	--	--	--	--	--	--	--	--	--	--	--	--	--	--	--	--	--	--	--	--	--	--	--	--	--	--	--	--	--	--	--	--	--	--	--	--	--	--	--	--	--	--	--	--	--	--	--	--	--	--	--	--	--	--	--	--	--	--	--	--	--	--	--	--	--	--	--	--	--	--	--	--	--	--	--	--	--	--	--	--	--	--	--	--	--	--	--	--	--	--	--	--	--	--	--	--	--	--	--	--	--	--	--	--	--	--	--	--	--	--	--	--	--	--	--	--	--	--	--	--	--	--	--	--	--	--	--	--	--	--	--	--	--	--	--	--	--	--	--	--	--	--	--	--	--	--	--	--	--	--	--	--	--	--	--	--	--	--	--	--	--	--	--	--	--	--	--	--	--	--	--	--	--	--	--	--	--	--	--	--	--	--	--	--	--	--	--	--	--	--	--	--	--	--	--	--	--	--	--	--	--	--	--	--	--	--	--	--	--	--	--	--	--	--	--	--	--	--	--	--	--	--	--	--	--	--	--	--	--	--	--	--	--	--	--	--	--	--	--	--	--	--	--	--	--	--	--	--	--	--	--	--	--	--	--	--	--	--	--	--	--	--	--	--	--	--	--	--	--	--	--	--	--	--	--	--	--	--	--	--	--	--	--	--	--	--	--	--	--	--	--	--	--	--	--	--	--	--	--	--	--	--	--	--	--	--	--	--	--	--	--	--	--	--	--	--	--	--	--	--	--	--	--	--	--	--	--	--	--	--	--	--	--	--	--	--	--	--	--	--	--	--	--	--	--	--	--	--	--	--	--	--	--	--	--	--	--	--	--	--	--	--	--	--	--	--	--	--	--	--	--	--	--	--	--	--	--	--	--	--	--	--	--	--	--	--	--	--	--	--	--	--	--	--	--	--	--	--	--	--	--	--	--	--	--	--	--	--	--	--	--	--	--	--	--	--	--	--	--	--	--	--	--	--	--	--	--	--	--	--	--	--	--	--	--	--	--	--	--	--	--	--	--	--	--	--	--	--	--	--	--	--	--	--	--	--	--	--	--	--	--	--	--	--	--	--	--	--	--	--	--	--	--	--	--	--	--	--	--	--	--	--	--	--	--	--	--	--	--	--	--	--	--	--	--	--	--	--	--	--	--	--	--	--	--	--	--	--	--	--	--	--	--	--	--	--	--	--	--	--	--	--	--	--	--	--	--	--	--	--	--	--	--	--	--	--	--	--	--	--	--	--	--	--	--	--	--	--	--	--	--	--	--	--	--	--	--	--	--	--	--	--	--	--	--	--	--	--	--	--	--	--	--	--	--	--	--	--	--	--	--	--	--	--	--	--	--	--	--	--	--	--	--	--	--	--	--	--	--	--	--	--	--	--	--	--	--	--	--	--	--	--	--	--	--	--	--	--	--	--	--	--	--	--	--	--	--	--	--	--	--	--	--	--	--	--	--	--	--	--	--	--	--	--	--	--	--	--	--	--	--	--	--	--	--	--	--	--	--	--	--	--	--	--	--	--	--	--	--	--	--	--	--	--	--	--	--	--	--	--	--	--	--	--	--	--	--	--	--	--	--	--	--	--	--	--	--	--	--	--	--	--	--	--	--	--	--	--	--	--	--	--	--	--	--	--	--	--	--	--	--	--	--	--	--	--	--	--	--	--	--	--	--	--	--	--	--	--	--	--	--	--	--	--	--	--	--	--	--	--	--	--	--	--	--	--	--	--	--	--	--	--	--	--	--	--	--	--	--	--	--	--	--	--	--	--	--	--	--	--	--	--	--	--	--	--	--	--	--	--	--	--	--	--	--	--	--	--	--	--	--	--	--	--	--	--	--	--	--	--	--	--	--	--	--	--	--	--	--	--	--	--	--	--	--	--	--	--	--	--	--	--	--	--	--	--	--	--	--	--	--	--	--	--	--	--	--	--	--	--	--	--	--	--	--	--	--	--	--	--	--	--	--	--	--	--	--	--	--	--	--	--	--	--	--	--	--	--	--	--	--	--	--	--	--	--	--	--	--	--	--	--	--	--	--	--	--	--	--	--	--	--	--	--	--	--	--	--	--	--	--	--	--	--	--	--	--	--	--	--	--	--	--	--	--	--	--	--	--	--	--	--	--	--	--	--	--	--	--	--	--	--	--	--	--	--	--	--	--	--	--	--	--	--	--	--	--	--	--	--	--	--	--	--	--	--	--	--	--	--	--	--	--	--	--	--	--	--	--	--	--	--	--	--	--	--	--	--	--	--	--	--	--	--	--	--	--	--	--	--	--	--	--	--	--	--	--	--	--	--	--	--	--	--	--	--	--	--	--	--	--	--	--	--	--	--	--	--	--	--	--	--	--	--	--	--	--	--	--	--	--	--	--	--	--	--	--	--	--	--	--	--	--	--	--	--	--	--	--	--	--	--	--	--	--	--	--	--	--	--	--	--	--	--	--	--	--	--	--	--	--	--	--	--	--	--	--	--	--	--	--	--	--	--	--	--	--	--	--	--	--	--	--	--	--	--	--	--	--	--	--	--	--	--	--	--	--	--	--	--	--	--	--	--	--	--	--	--	--	--	--	--	--	--	--	--	--	--	--	--	--	--	--	--	--	--	--	--	--	--	--	--	--	--	--	--	--	--	--	--	--	--	--	--	--	--	--	--	--	--