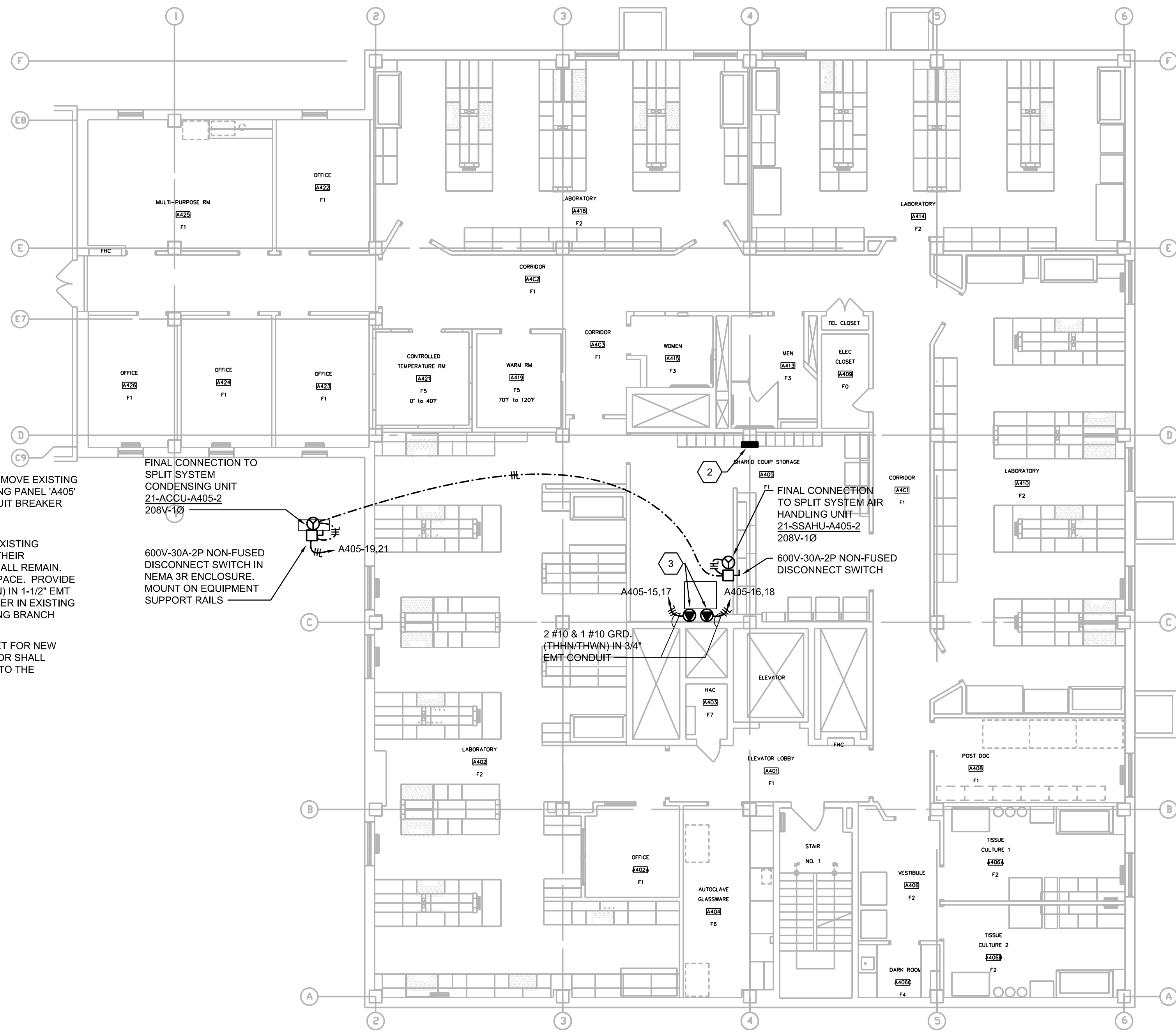


1 **FIFTH FLOOR PLAN**  
SCALE: 1/8" = 1'-0"



2 **FOURTH FLOOR PLAN**  
SCALE: 1/8" = 1'-0"

NEW PANEL A405					
MAIN		125	MCB	VOLTAGE	
BUSING		225	AMPS	208 /120V	
SCR		22,000	AIC	3-Ph 4-W	
NO	DESCRIPTION	CB/P	CB/P	DESCRIPTION	NO
1	EXISTING EQUIPMENT	15/3	20/1	EXISTING EQUIPMENT	2
3	EXISTING EQUIPMENT	20/1	20/1	EXISTING EQUIPMENT	4
5	EXISTING EQUIPMENT	30/2	30/2	EXISTING EQUIPMENT	6
7	EXISTING EQUIPMENT	20/1	20/1	EXISTING EQUIPMENT	8
9	EXISTING EQUIPMENT	20/1	40/2	EXISTING EQUIPMENT	10
11	EXISTING EQUIPMENT	20/1	40/2	EXISTING EQUIPMENT	12
13	EXISTING EQUIPMENT	20/1	40/2	EXISTING EQUIPMENT	14
15	NEW30ARECEPTACLE FOR LAB EQUIPMENT	30/2	30/2	NEW30ARECEPTACLE FOR LAB EQUIPMENT	16
17	NEW30ARECEPTACLE FOR LAB EQUIPMENT	30/2	30/2	NEW30ARECEPTACLE FOR LAB EQUIPMENT	18
19	NEW SPLIT SYSTEM 21-ACCU-A405-2	25/2	20/1	SPARE	20
21	SPARE	20/1	20/1	SPARE	22
23	SPARE	20/1	20/1	SPARE	24
25	SPARE	20/1	20/1	SPARE	26
27	SPARE	20/1	20/1	SPARE	28
29	SPARE	20/1	20/1	SPARE	30
31	SPARE	20/1	20/1	SPARE	32
33	SPARE	20/1	20/1	SPARE	34
35	SPARE	20/1	20/1	SPARE	36
37	SPARE	20/1	20/1	SPARE	38
39	SPARE	20/1	20/1	SPARE	40
41	SPARE	20/1	20/1	SPARE	42

RE-CONNECT EXISTING BRANCH CIRCUITS TO NEW BREAKERS INDICATED

Revisions	Date

**H.F. LENZ COMPANY**  
1407 Scalp Avenue  
Phone: 814-269-9300  
cadd@hflenz.com  
Johnstown, PA 15904  
FAX: 814-269-8300  
www.hflenz.com  
**Engineering**

Drawing Title <b>FOURTH &amp; FIFTH FLOOR PLANS</b>	Project Title <b>4TH FLOOR IMAGING SYSTEM</b>	Date <b>04/26/2018</b>
Approved: Division Chief	Building Number <b>21</b>	Checked <b>TME</b>
Approved: Service Director	Location <b>VAMC Philadelphia, Pennsylvania</b>	Drawn <b>RJD</b>
Project No. <b>642-17-300</b>	DRAWING NO. <b>E101</b>	Dwg. 1 Of 2

**Veterans Administration**