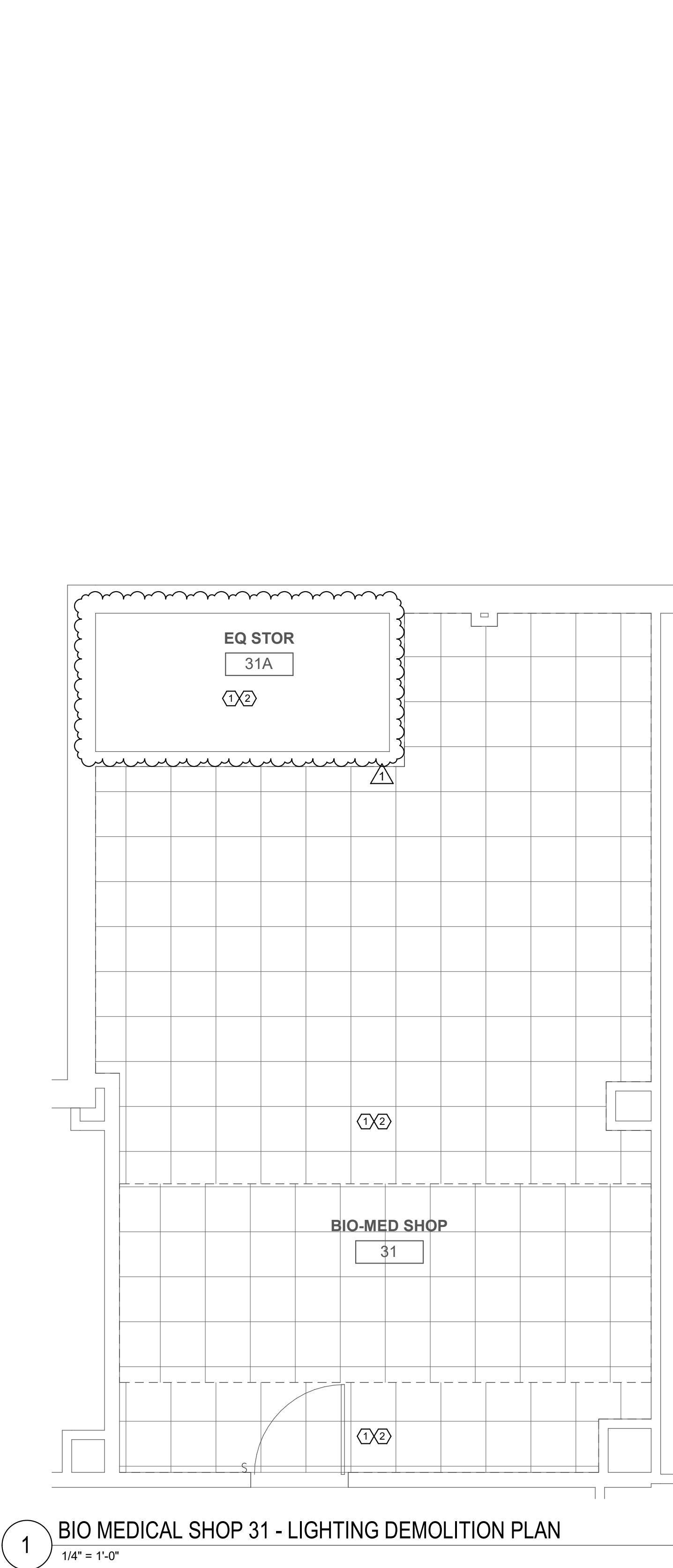
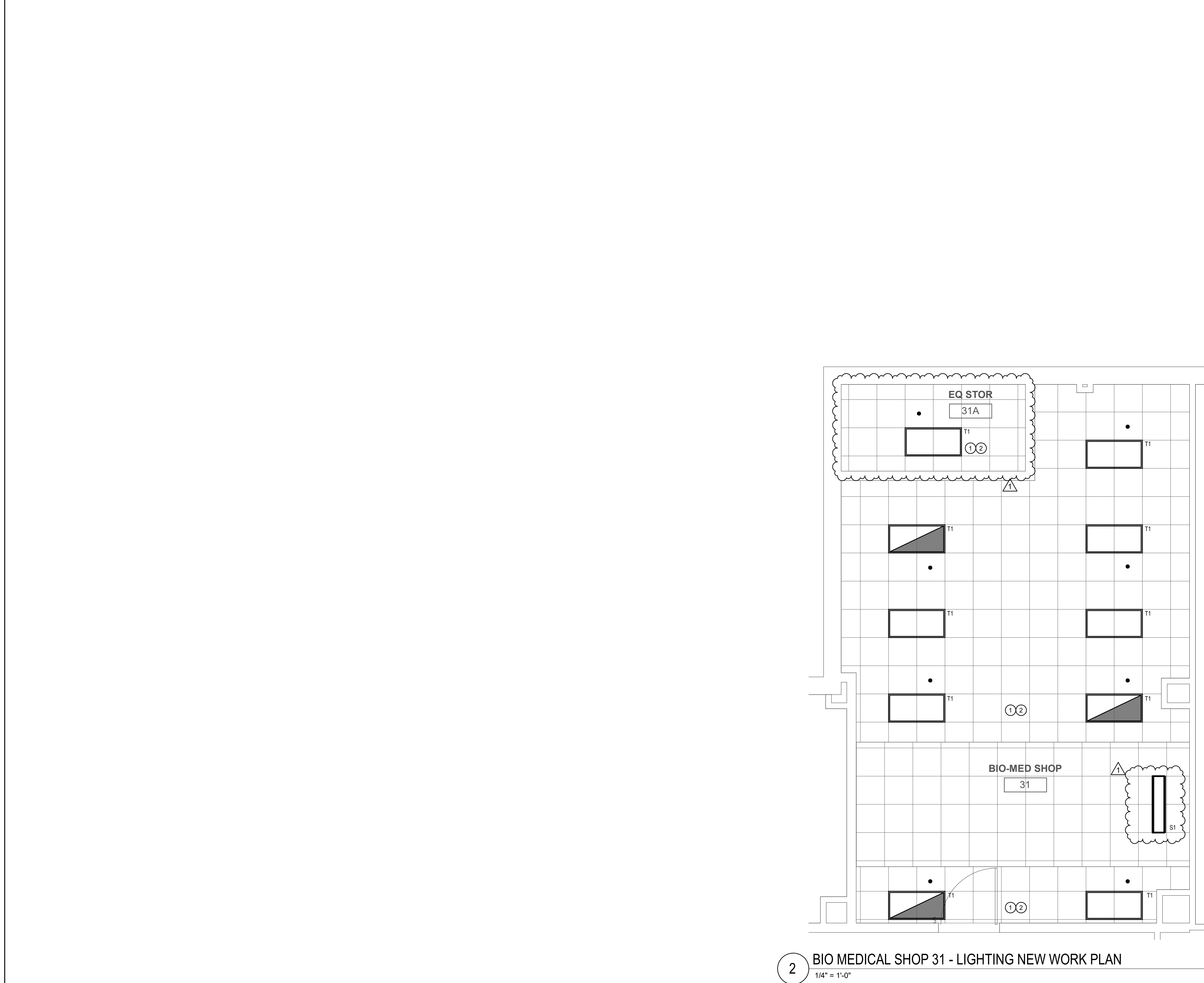


7/27/2018 10:41:50 AM

three inches = one foot
one and one half inch = one foot
one inch = one foot
one inch = one foot
three quarters inch = one foot
one half inch = one foot
one half inch = one foot
three eighths inch = one foot
one quarter inch = one foot
one eighth inch = one foot



LIGHTING FIXTURE SCHEDULE							
TYPE	DESCRIPTION	MANUFACTURER	MODEL NO.	LAMP TYPE	WATTAGE	VOLTAGE	COMMENTS
31	4" SURFACE MOUNT LED	LITHONIA	LBL4-4000LM-80CRI-40K-MVOLT	LED	32 VA	120 V	PROVIDE HALF SHADED FIXTURE WITH 1400L 80MIN RUN, INTEGRAL EM BATTERY (EL14L); PROVIDE A MULTI-VOLTAGE INPUT DRIVER (MVOLT 120-277V)
T1	2'x4' RECESSED LED	LITHONIA	2GTL-4-40L-MVOLT-LP840	LED	31 VA	120 V	

LIGHTING GENERAL NOTES

- 1 HALF SHADED LIGHTING FIXTURES SHALL HAVE AN INTEGRAL EMERGENCY BATTERY BACKUP.
- 2 COORDINATE FINAL LOCATIONS OF FIXTURES WITH MECHANICAL OBJECTS.
- 3 PROVIDE EQUIPMENT GROUND CONDUCTOR IN ALL RACEWAYS.
- 4 ROUTE CONDUIT HIGH AGAINST STRUCTURE AND OFFSET UP BETWEEN JOISTS WHERE NECESSARY TO AVOID DUCT WORK AND HVAC SYSTEM.
- 5 PROVIDE CONDUIT AND WIRING AS REQUIRED TO MEET CIRCUITING SHOWN TO CONFORM TO NEC REQUIREMENTS.
- 7 ALL SCOPE INDICATED ON THIS DRAWING SHALL BE INCLUDED AS PART OF BID ITEM 1. REFER TO SPECIFICATIONS SECTION 01 00 00.
- 8 UNDER BID ALTERNATE NO. 1, ALL SCOPE INDICATED ON THIS DRAWING SHALL BE EXCLUDED. REFER TO SPECIFICATIONS SECTION 01 00 00.

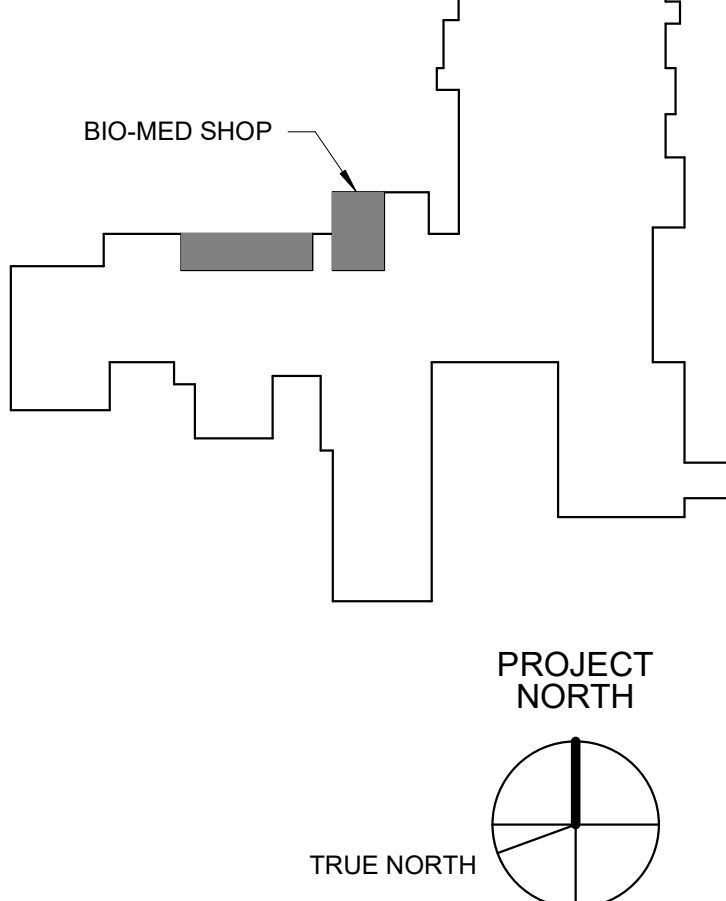
LIGHTING DEMOLITION KEYED NOTES

- 1 DISCONNECT AND REMOVE EXISTING LIGHT FIXTURES. REMOVE WIRES BACK TO THE NEAREST JUNCTION BOX ABOVE CEILING. EXISTING CIRCUIT SHALL BE RE-USED.
- 2 EXISTING CEILING MOUNTED DEVICES SUCH AS LIGHTING CONTROL AND FIRE ALARM DEVICES SHALL BE REMOVED AND RE-INSTALLED AFTER THE INSTALLATION OF NEW CEILING.

LIGHTING KEYED NOTES

- 1 PROVIDE NEW LIGHTING FIXTURES AND CONNECT TO THE EXISTING LIGHTING AND CONTROLS CIRCUIT IN THIS ROOM. PROVIDE ADDITIONAL WIRES AS REQUIRED TO EXTEND THE CIRCUIT TO THE LOCATIONS OF THE NEW LIGHTING FIXTURES.
- 2 COORDINATE LOCATIONS OF NEW LIGHTING FIXTURES WITH EXISTING SPRINKLER HEADS. RELOCATE LIGHT FIXTURES TO AVOID CONFLICT.

KEY PLAN

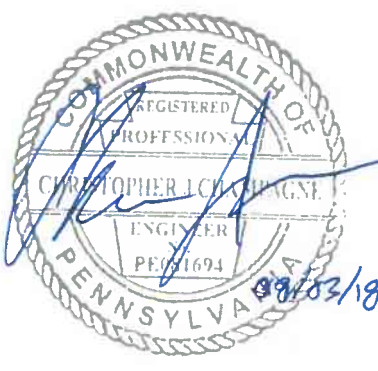


FULLY SPRINKLERED BID DOCUMENTS

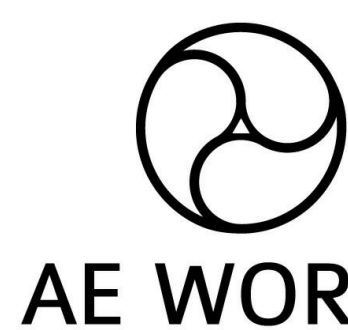
1	BID RFIs	07/27/2018
#	Revision	Date

CONSULTANTS:

SEAL



ARCHITECTS/ENGINEERS:



209 SANDUSKY STREET
PITTSBURGH, PA 15212
PH: 412.287.7333
www.ae-works.com
AE WORKS PROJECT NUMBER: 17029

Drawing Title
BIO MEDICAL SHOP LIGHTING PLAN,
SCHEDULES AND DETAILS

Approved: Project Director

Project Title:
CORRECT AIR CONDITIONING
DEFICIENCIES IN BIOMEDICAL
SHOP AND MAILROOM

Location: JAMES E. VAN ZANDT MEDICAL CENTER
ALTOONA, PA 16602

Date:
MARCH 27, 2018

Checked:
JG

Drawn:
BK

Project Number
503-17-104

Building Number
1

Drawing Number
E101

Office of
Construction
and Facilities
Management

