

3D/INTERNATIONAL AND STONE, MARRACCINI AND PATTERSON
3D/I • SMP A JOINT VENTURE HOUSTON, TEXAS
1900 WEST LOOP SOUTH, SUITE 200 HOUSTON, TEXAS 77027 TELEPHONE (713) 871-7000

STRUCTURAL AND CIVIL
MECHANICAL AND ELECTRICAL

WALTER P. MOORE AND ASSOCIATES, INCORPORATED
TINDELL & HOLLER, INC. AND 3D/INTERNATIONAL



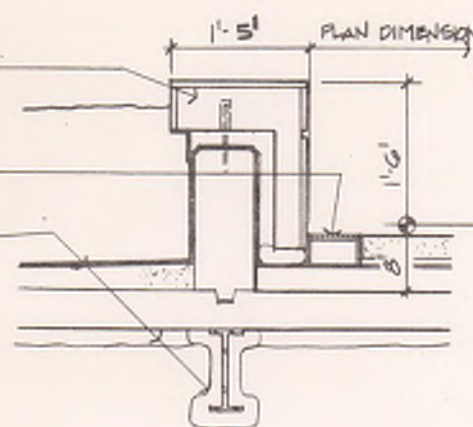
Drawing Title COURT PLANS		Project Title REPLACEMENT / MODERNIZATION MEDICAL CENTER		Date 2 JAN. 87
Approved Project Director <i>[Signature]</i>		Building Number 100		Project No. 580-040
Location VAMC HOUSTON, TEXAS		Checked FDS	Drawn JH/BL	Drawing No. 100-307
Dwg 361 of 404				

Veterans Administration

GRANITE CLAD
PRECAST CONC.
RE: 7/308 FOR TYP. NOTES

ACCENT BAND-RE: COURT
PAVING DETAILS

BM. PREPROOFING, INSUL., AND
PLANTER WP. - RE: 3/308



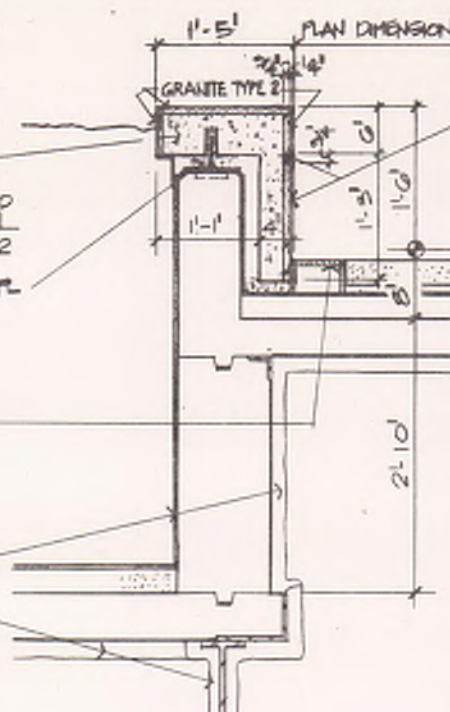
NOTE
GRANITE CLAD, PRECAST CONC.
PLANTER WALL DIM. AND NOTES
SHOWN IN THIS DETAIL ARE
TYP. AT ALL COURTS

GRANITE CLAD PRECAST
CONC. PLANTER WALL

SECURE PRECAST WITH MORTAR BED
TOP AND BOTTOM AND #2-4" x 4" L
S&S DOWELS AT 2'-0" O.C. (MIN. 2
DOWELS PER PRECAST PIECE) -
WELD DOWELS TO CAST-IN WELD R.

ACCENT BAND-RE: COURT
PAVING DETAILS

BM. PREPROOFING, INSUL., AND
PLANTER WP. - RE: 3/308

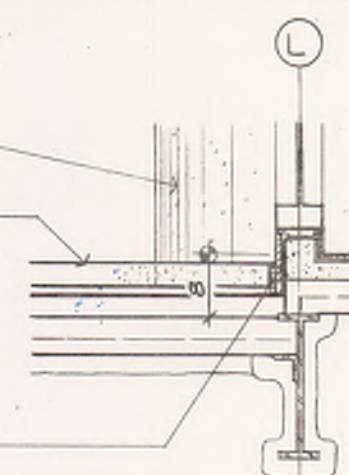


GRANITE TYPE 1

PRECAST CONC. COLUMN COVER
BEYOND

PRECAST CONC. - RE: COURT
PAVING DETAILS

SHEET WP. BELOW PAVING
CONT. UP FACE AND OVER CURB



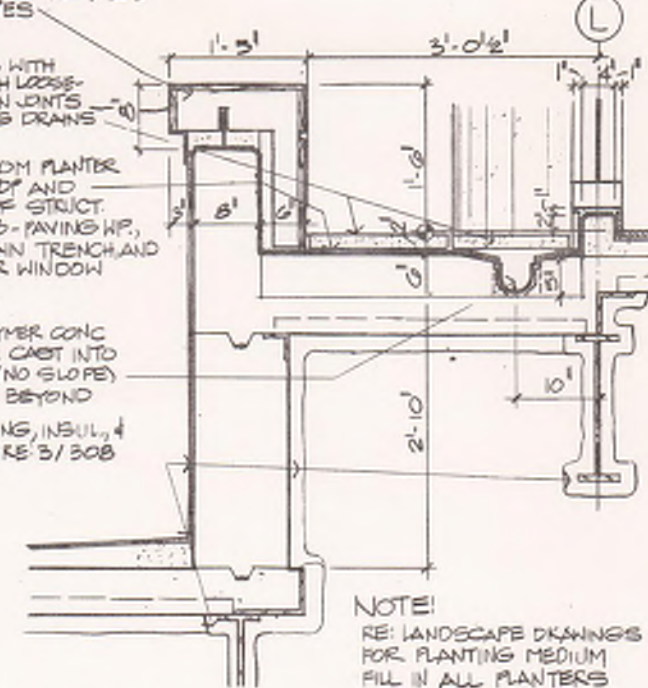
PRECAST CONC. - RE: 7/308
FOR TYP. NOTES

P.C. PAVING WITH
TYPE A FINISH LOOSE-
LAYS WITH OPEN JOINTS
AT SUB-PAVING DRAIN

SHEET WP. FROM PLANTER
CONT. OVER TOP AND
DOWN FACE OF STRUCT.
CONC. TO SUB-PAVING WP.
THROUGH DRAIN TRENCH AND
UP AND OVER WINDOW
WALL CURB

PRECAST POLYMER CONC.
DRAIN GUTTER CAST INTO
CONC. FILL (NO SLOPE)
CONT. TO DRAIN BEYOND
BM. PREPROOFING, INSUL., AND
PLANTER WP. - RE: 3/308

NOTE!
RE: LANDSCAPE DRAWINGS
FOR PLANTING MEDIUM
FILL IN ALL PLANTERS

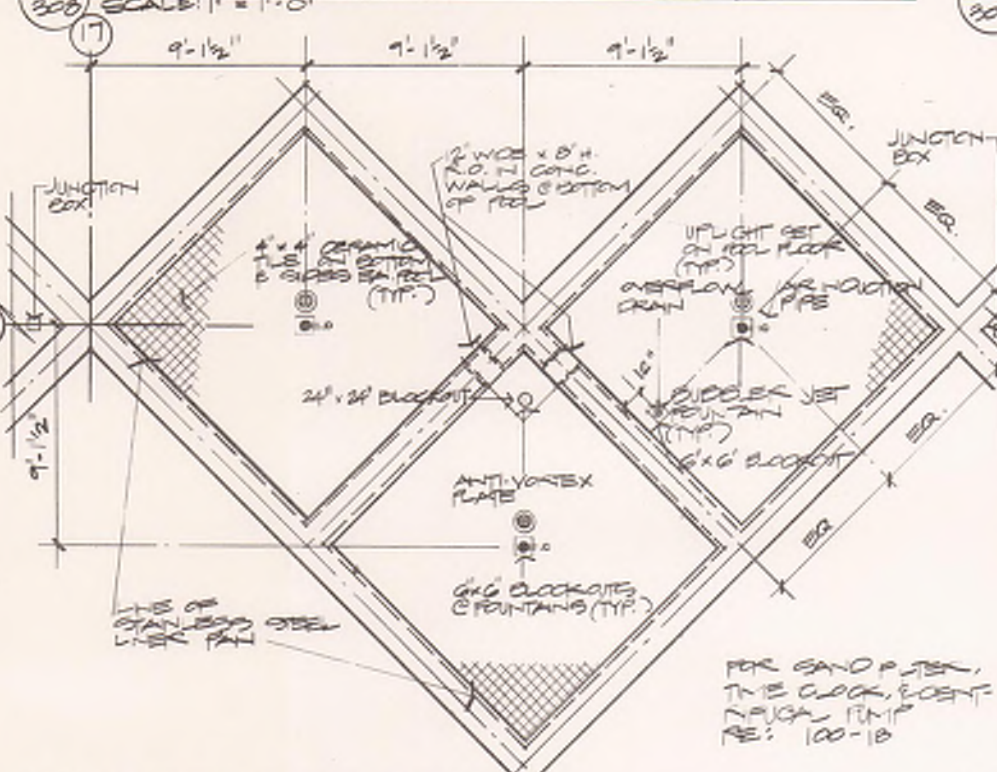


10 COURT PLANTER
SCALE: 1" = 1'-0"

11 COURT PLANTER
SCALE: 1" = 1'-0"

4 COURT EDGE
SCALE: 1" = 1'-0"

1 COURT PLANTER
SCALE: 1" = 1'-0"



GRANITE CLAD PRECAST
CONC. PLANTER WALL CAP
RE: DETAIL ABOVE FOR ATTACHMENT

PROVIDE FILL FOR ALL
COURT PLANTERS IN PHASE
II WORK (FILL SHOWN HERE
ONLY BUT TYP. & ALL)

EXTEND MEMB. WP. OVER TOP OF
STRUCTURAL WALL

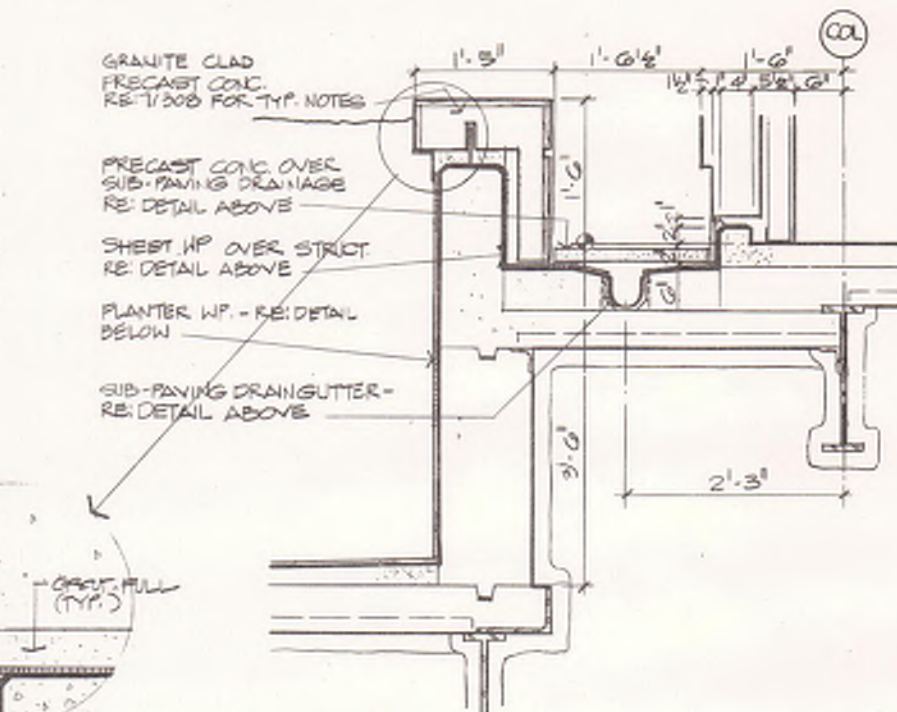
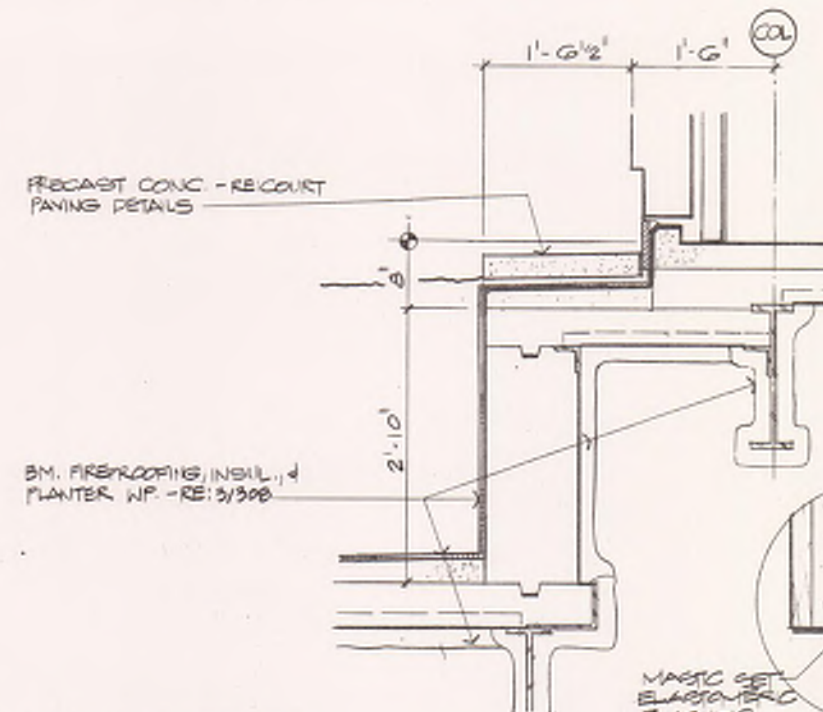
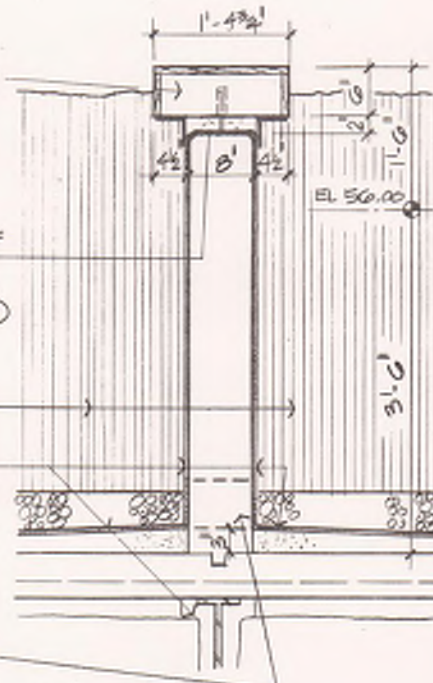
INCLUDE IN PHASE II PLANTER
FILL (TYPICAL ALL PLANTERS)

GRAVEL
SOIL SEPARATOR
PLANTING MIX

RE: PHASE III LANDSCAPE
DRAWINGS FOR DETAILS

BM. PREPROOFING, INSUL., AND
PLANTER WP. - RE: 3/308

6" & SLEEVES - WATERPROOF

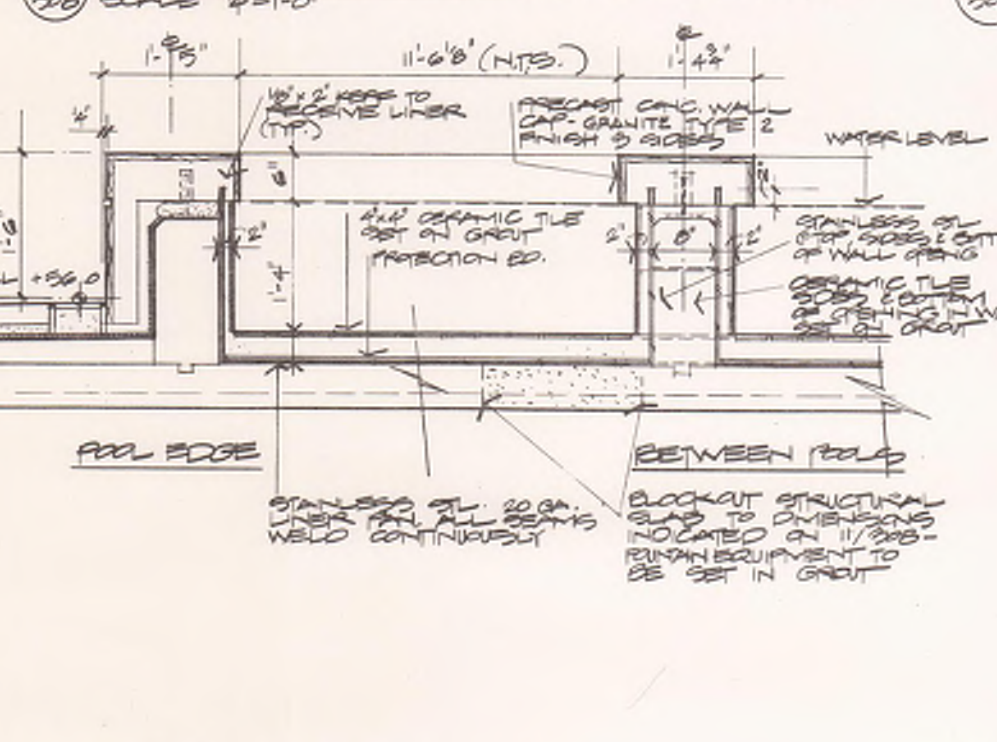


11 WATER FEATURES
SCALE: 1" = 1'-0"

12 PLANTER DIVIDER WALL
SCALE: 1" = 1'-0"

5 COURT EDGE
SCALE: 1" = 1'-0"

2 COURT PLANTER
SCALE: 1" = 1'-0"



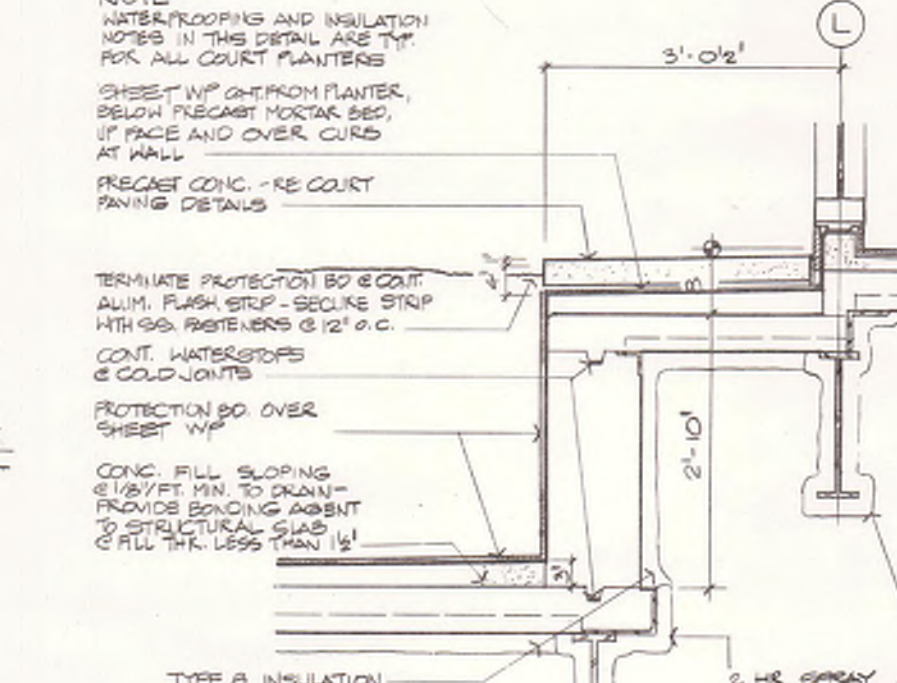
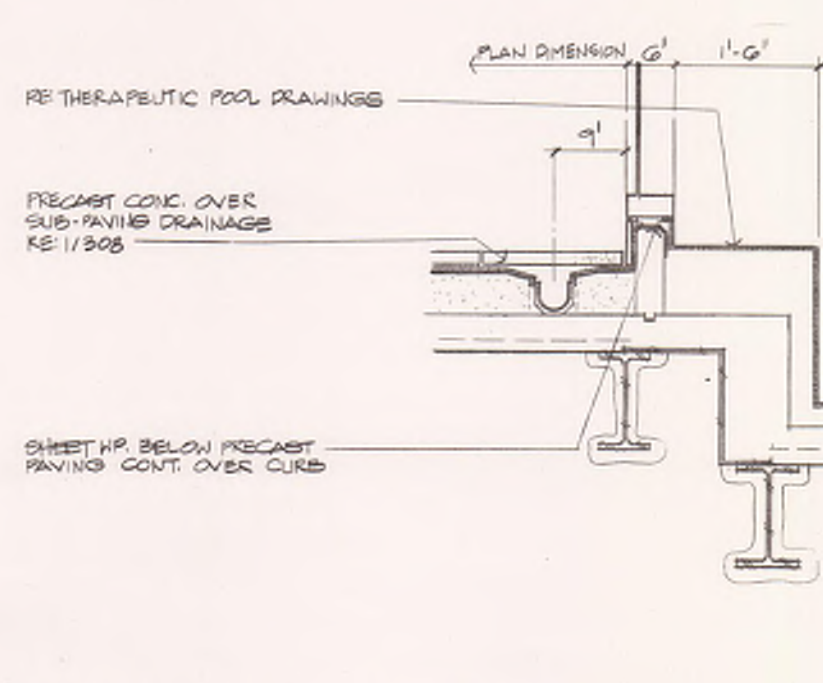
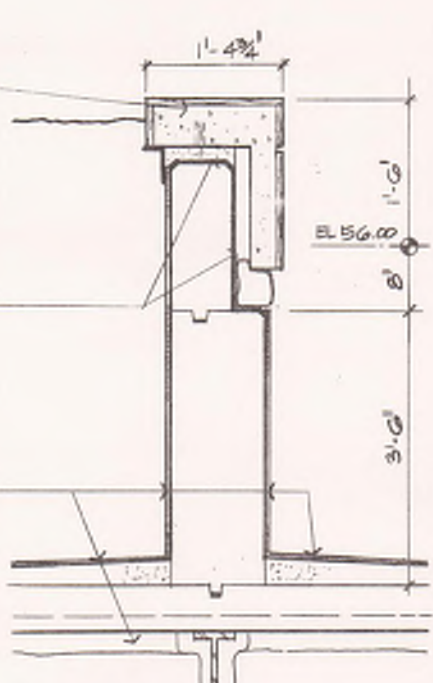
GRANITE CLAD
PRECAST CONC.
RE: 7/308 FOR TYP. NOTES

WATER LEVEL

STAINLESS STEEL
PIPE SIZES & LOTS
OF WALL OPENING

MEMB. WP. CONT. FROM
PLANTER TO PLANTER, BELOW
PRECAST, OVER TOP OF
STRUCTURAL WALL

BM. PREPROOFING, INSUL., AND
PLANTER WP. - RE: 3/308



12 SECTION-WATER FEATURE
SCALE: 1" = 1'-0"

9 PLANTER DIVIDER WALL
SCALE: 1" = 1'-0"

6 COURT EDGE & THER. POOL
SCALE: 1" = 1'-0"

3 COURT EDGE
SCALE: 1" = 1'-0"

3D/INTERNATIONAL AND STONE, MARRACCINI AND PATTERSON
3D/I • SMP A JOINT VENTURE HOUSTON, TEXAS
1800 WEST LOOP SOUTH, SUITE 200 HOUSTON, TEXAS 77027 TELEPHONE 1720 871-7000

STRUCTURAL AND CIVIL
MECHANICAL AND ELECTRICAL

WALTER P. MOORE AND ASSOCIATES, INCORPORATED
TYNELL & HOLLER, INC. AND 3D/INTERNATIONAL



Drawing Title
COURT DETAILS

SCALE: AS NOTED

Approved Project Director

W. P. Moore

Project Title
REPLACEMENT /
MODERNIZATION
MEDICAL CENTER

Building Number
100

Checked
FDB

Drawn
JH/BL

Location
VAMC HOUSTON, TEXAS

Date
2 JAN. 87

Project No.
580-040

Drawing No.
100-308

Location
VAMC HOUSTON, TEXAS

Drawn By
JH/BL

Checked By
FDB

Approved By
W. P. Moore

Veterans Administration

8 COURT DRAIN DETAIL
309 SCALE 1/2" = 1'-0"

9 PIPERAIL FENCE @ SCI COURT - ELEVATION
309 SCALE 4"=1'-0"

10 DETAIL - FENCE POST
809 SCALE 3/4" = 1'-0"

12 DETAIL - PRECAST PLANTER & POOL JOINTS
309 SCALE 1/2" = 1'-0"

MILLION ELEVATION & ROOF PLAN
1/2" = 1'-0"

7 SECTION
309 SCALE 1" = 1'-0"

① TYPICAL COURT PAVING PATTERN
309 SCALE: 1/2" = 1'-0"

6 MIL POLYETHYLENE SLIP SHEET

4 ACCENT BAND AT COURT PAVING

309 SCALE: 3" = 1' - 0"

5 TYP. COURT CONTROL JOINT
309 SCALE: 3" = 1'-0"

3 TYP. PRECAST PAVING JOINT
309 SCALE: 3" = 1'-0"